

District I  
1625 N. French Dr., Hobbs, NM 88240  
District II  
1301 W. Grand Avenue, Artesia, NM 88210  
District III  
1000 Rio Brazos Road, Aztec, NM 87410  
District IV  
1220 S. St. Francis Dr., Santa Fe, NM 87505

State of New Mexico  
Energy Minerals and Natural Resources

Form C-101  
Revised June 10, 2003

Oil Conservation Division  
1220 South St. Francis Dr.  
Santa Fe, NM 87505

Submit to appropriate District Office  
State Lease - 6 Copies  
Fee Lease - 5 Copies

☐ AMENDED REPORT

**APPLICATION FOR PERMIT TO DRILL, RE-ENTER, DEEPEN, PLUGBACK, OR ADD A ZONE**

<sup>1</sup> Operator Name and Address Arch Petroleum Inc. P. O. Box 10340, Midland, TX 79702-7340		<sup>2</sup> OGRID Number 000962
<sup>3</sup> Property Code 14900		<sup>3</sup> API Number 30 - 025-76647
<sup>5</sup> Property Name J. R. Holt NCT A		<sup>6</sup> Well No. 6

<sup>7</sup> Surface Location

UL or lot no.	Section	Township	Range	Lot Idn	Feet from the	North/South line	Feet from the	East/West line	County
B G	16	24S	37E		2530	North	1980	East	Lea

<sup>8</sup> Proposed Bottom Hole Location If Different From Surface

UL or lot no.	Section	Township	Range	Lot Idn	Feet from the	North/South line	Feet from the	East/West line	County
<sup>9</sup> Proposed Pool 1 Fowler Devonian (26030)						<sup>10</sup> Proposed Pool 2 Wildcat Fowler Tubb (26635) 97325			

<sup>11</sup> Work Type Code N	<sup>12</sup> Well Type Code 0	<sup>13</sup> Cable/Rotary R	<sup>14</sup> Lease Type Code P	<sup>15</sup> Ground Level Elevation 3251'
<sup>16</sup> Multiple No	<sup>17</sup> Proposed Depth 7700'	<sup>18</sup> Formation Devonian	<sup>19</sup> Contractor Capstar	<sup>20</sup> Spud Date When Approved

<sup>21</sup> Proposed Casing and Cement Program

Hole Size	Casing Size	Casing weight/foot	Setting Depth	Sacks of Cement	Estimated TOC
17-1/2	13-3/8	48#	1100'	850 sks	Surface
11	8-5/8	24# & 32#	2500'	600 sks	Surface
7-7/8	5-1/2	15.5# & 17#	7700'	1450 sks	1500' FS

<sup>22</sup> Describe the proposed program. If this application is to DEEPEN or PLUG BACK, give the data on the present productive zone and proposed new productive zone.  
Describe the blowout prevention program, if any. Use additional sheets if necessary.

SEE ATTACHED

NSL-5027

<sup>23</sup> I hereby certify that the information given above is true and complete to the best of my knowledge and belief.

Signature:

Cathy Wright

Printed name:

Cathy Wright

Title:

Sr. Operation Tech

E-mail Address:

tomberli@pogoproducing.com

Date:

03/26/04

Phone:

685-8144  
432-685-8100

OIL CONSERVATION DIVISION

Approved by:

Paul J. Kuntz

Title:

PETROLEUM ENGINEER

Approval Date:

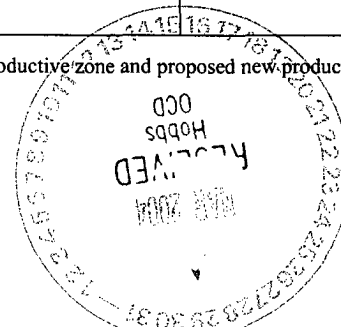
MAR 31 2004

Expiration Date:

3/31/05

Conditions of Approval:

Attached ☐



**DISTRICT I**

P.O. Box 1980, Hobbs, NM 88241-1980

**State of New Mexico**

Energy, Minerals and Natural Resources Department

Form C-102

Revised February 10, 1994

Submit to Appropriate District Office

State Lease - 4 Copies

Fee Lease - 3 Copies

**DISTRICT II**

P.O. Drawer 82, Artesia, NM 88211-0719

**OIL CONSERVATION DIVISION**

P.O. Box 2088

Santa Fe, New Mexico 87504-2088

**DISTRICT III**

1000 Rio Grande Rd., Aztec, NM 87410

**DISTRICT IV**

P.O. Box 2088, Santa Fe, N.M. 87504-2088

**WELL LOCATION AND ACREAGE DEDICATION PLAT**☐ AMENDED REPORT

API Number	Pool Code	Pool Name
	26030	Fowler Devonian
Property Code	Property Name	Well Number
14900	JR HOLT NCT "A"	6
GRID No.	Operator Name	Elevation
000962	POGO PRODUCING COMPANY	3251'

**Surface Location**

UL or lot No.	Section	Township	Range	Lot Idn	Feet from the	North/South line	Feet from the	East/West line	County
G	16	24-S	37-E		2530	NORTH	1980	EAST	LEA

**Bottom Hole Location If Different From Surface**

UL or lot No.	Section	Township	Range	Lot Idn	Feet from the	North/South line	Feet from the	East/West line	County

Dedicated Acres	Joint or Infill	Consolidation Code	Order No.
40			NSL 5027

NO ALLOWABLE WILL BE ASSIGNED TO THIS COMPLETION UNTIL ALL INTERESTS HAVE BEEN CONSOLIDATED  
OR A NON-STANDARD UNIT HAS BEEN APPROVED BY THE DIVISION

	<b>OPERATOR CERTIFICATION</b> I hereby certify the the information contained herein is true and complete to the best of my knowledge and belief.  <i>Cathy Wright</i> Signature Cathy Wright Printed Name Sr. Operation Tech Title 03/26/04 Date
	<b>SURVEYOR CERTIFICATION</b> I hereby certify that the well location shown on this plat was plotted from field notes of actual surveys made by me or under my supervision and that the same is true and correct to the best of my belief.  March 24, 2004 Date Surveyed G. EIDSON Signature Seal of Professional Surveyor 04.11.0337 Certified by 12041

**GEODETTIC COORDINATES**

NAD 27 NME

Y = 444845.1 N

X = 861243.9 E

LAT. 32°13'03.36"N

LONG. 103°09'55.00"W

## **J.R. Holt NCT "A" # 6**

### **Drilling Plan Summary**

2530 ft FNL & 1980 ft FEL, Sec 16, T24S, R37E, Lea County

- 1. Pre set 20 inch Conductor. Grout cement same to surface.**
- 2. Miru Rotary tools. Drill 17 ½ inch hole to 1100 ft. Use 8.4 ppg fresh water with viscous sweeps.**
- 3. Run 13 3/8 inch 48# H-40 casing to 1100 Ft. Centralize bottom 12 jts and top 3 jts. Run 13 3/8 inch insert valve 1 jt up from shoe.**
- 4. Cement Casing w/ 650 sks "C" 65:35:6 cement followed by 200 sks "C" w/ 2% calcium Chloride. Cement should circulate.**
- 5. Nipple up 11inch double ram BOP's w/ packoff. Test Casing and Bop's to 850 psi. using rig pump. R/U H2S monitoring equipment.**
- 6. Drill 11 inch hole to 2500 ft using 10 ppg brine water and viscous sweeps as necessary. Run Fluid Caliper before POH.**
- 7. Run 8 5/8 inch 32 # and 24 # J-55 ST&C casing to 2500 ft. Run Guide shoe and float collar. Centalize the bottom 12 joints and bottom 3 jts in 13 3/8 inch casing.**
- 8. Cement Casing w/ ± 400 sks "C" 65:35:6 Lite cement + 5% salt. Tail with 200 sks "C" w/ 2% calcium chloride. Cement volume adjusted after running fluid caliper. Cement should be circulated.**
- 9. Nipple up 9 inch 3M BOPE w/ Packoff. Test BOPE and Casing to 2000 psi. R/U H2S Monitoring Equipment.**
- 10. Drill 7 7/8 inch hole to Total depth of 7700 ft. using Fresh Water and sweeps as necessary. Mud up is not anticipated though a starch Soup/ Salt gel system may be used if seepage is uncontrollable.**
- 11. Log well as per Geologist recommendation. Run 5 ½ inch production casing and centralize adjusted after viewing logs. Stage tool Anticipated @ ± 5000 ft.**
- 12. Cement Casing 1<sup>st</sup> stage w/ ± 650 sks "C" w/ 8 pps gilsonite mixed @ 14.09 ppg. Cement second stage w/ ± 800 sks "C" w/ 8 pps gilsonite mixed @ 14.09 ppg. Cement volumes will be adjusted according to log caliper.**

## **J.R. Holt NCT "A" # 6**

### **Drilling Plan Summary**

2530 ft FNL & 1980 ft FEL, Sec 16, T24S, R37E, Lea County

**Note: No Drill Stem test or Coring is anticipated for this well.**

#### **Surface Casing:**

**13 3/8 inch 48# H-40**

#### **Intermediate Csg:**

**500 ft 8 5/8 in 32# J-55 ST&C**

**1500 ft 8 5/8 in 24# J-55 ST&C**

**500 ft 8 5/8 in 32# J-55 ST&C**

#### **Production Csg:**

**1000 ft 5 1/2 inch 17# J-55 LT&C**

**5000 ft 5 1/2 inch 15.5# J-55 LT&C**

**1700 ft 5 1/2 inch 17# J-55 LT&C**

**stage tool @ ± 5000ft**

**Pogo Producing Company  
J.R. Holt NCT "A" # 6  
Hydrogen Sulfide Contingency Plan  
For Drilling/Workover/Facility**

2530 ft FNL & 1980 ft FEL, Sec 16, T24S, R37E, Lea County

**This well and its anticipated facility are not expected to have Hydrogen Sulfide releases. In the event of a Hydrogen Sulfide release the following plan will be adopted during the drilling, completion and facility operating of the subject well. We will have a Safety trailer and monitoring equipment on location during the drilling below the Surface Casing depth of  $\pm 1100$  ft.**

**Pogo Producing Company  
J.R. Holt NCT "A" # 6  
Hydrogen Sulfide Contingency Plan  
For Drilling/Workover/Facility**

2530 ft FNL & 1980 ft FEL, Sec 16, T24S, R37E, Lea County

**TABLE OF CONTENTS**

<b>GENERAL EMERGENCY PLAN</b>	<b>page 3</b>
<b>EMERGENCY PROCEDURE FOR UNCONTROLLED RELEASES OF H<sub>2</sub>S</b>	<b>page 3-4</b>
<b>EMERGENCY NUMBERS AND</b>	<b>page 4-5</b>
<b>PRODUCTION OF THE GENERAL RADIUS OF EXPOSURE (ROE)</b>	<b>page 6</b>
<b>PUBLIC EVACUATION PLAN</b>	<b>page 6-7</b>
 <b>PROCEDURE FOR IGNITING AN UNCONTROLLABLE CONDITION:</b>	
<b>PREOCEURE FOR IGNITION</b>	<b>page 7</b>
<b>REQUIRED EMERGENCY EQUIPMENT</b>	<b>page 8</b>
<b>USING SELF CONTAINED BREATHING AIR EQUIPMENT ( SCBA)</b>	<b>page 9</b>
<b>RESCUE &amp; FIRST AID FOR VICTIMS OF HYDROGEN SULFIDE (H<sub>2</sub>S) POISONING</b>	<b>page 9-10</b>
<b>H<sub>2</sub>S TOXIC EFFECTS</b>	<b>page 11</b>
<b>H<sub>2</sub>S PHYSICAL EFFECTS</b>	<b>page 11</b>
<b>LOCATION MAP</b>	<b>page 12</b>

**Pogo Producing Company**  
**J.R. Holt NCT "A" # 6**  
**Hydrogen Sulfide Contingency Plan**  
**For Drilling/Workover/Facility**

2530 ft FNL & 1980 ft FEL, Sec 16, T24S, R37E, Lea County

**General H2S Emergency Actions:**

1. All personnel will immediately evacuate to an up-wind and if possible up-hill "safe area"
2. If for any reason a person must enter the hazardous area, they must wear a SCBA (Self Contained Breathing Apparatus)
3. Always use the "buddy system"
4. Isolate the well/problem if possible
5. Account for all personnel
6. Display the proper colors warning all unsuspection personnel of the danger at hand.
7. Contact the Company personnel as soon as possible if not at the location. ( use the enclosed call list as instructed

**At this point the company representative will evaluate the situation and coordinate the necessary duties to bring the situation under control, and if necessary, the notification of the emergency response agencies and nearby residents.**

**EMERGENCY PROCEDURES FOR AN UNCONTROLLABLE RELEASE OF H2S**

1. All personnel will don the self contained breathing apparatus.
2. Remove all personnel to the "safe area". ( always use the buddy system).
3. Contact company personnel if not on location.
4. Set in motion the steps to protect and or remove the general public to an upwind "safe area". Maintain strict security & safety procedures while dealing with the source.
5. No entry to any unauthorized personnel.
6. Notify the appropriate agencies: City Police-City Street (s)  
State Police- State Rd  
County Sheriff – County Rd.
7. Call the NMOCD

**Pogo Producing Company**  
**J.R. Holt NCT "A" # 6**  
**Hydrogen Sulfide Contingency Plan**  
**For Drilling/Workover/Facility**

2530 ft FNL & 1980 ft FEL, Sec 16, T24S, R37E, Lea County

If at this time the supervising person determines the release of H<sub>2</sub>S cannot be contained to the site location and the general public is in harms way he will take the necessary steps to protect the workers and the public.

**EMERGENCY CALL LIST:** ( Start and continue until ONE of these people have been contacted)

	<u>OFFICE</u>	<u>MOBILE</u>	<u>HOME</u>
<b>POGO Producing Co.</b>	<b>432 685 8100</b>		
<b>Richard Wright</b>	<b>432 685 8140</b>	<b>432 556 7595</b>	<b>432 699 7108</b>
<b>Barrett Smith</b>	<b>432 685 8141</b>	<b>432 425 0149</b>	<b>432 520 7337</b>
<b>Rex Jasper</b>	<b>432 685 8143</b>	<b>432 631 0127</b>	<b>432 694 1839</b>
<b>Donny Davis</b>	<b>pgr 432 563 6944</b>	<b>432 556 5927</b>	<b>432 570 9555</b>
<b>Jerry Cooper</b>	<b>432 685 8101</b>		<b>432 697 4629</b>

**EMERGENCY RESPONSE NUMBERS:**

<b>State Police:</b>	<b>Eddy County</b>		<b>505 748 9718</b>
<b>State Police:</b>	<b>Lea County</b>		<b>505 392 5588</b>
<b>Sheriff</b>	<b>Eddy County</b>		<b>505 746 2701</b>
<b>Sheriff</b>	<b>Lea County</b>		
<b>Emergency Medical Ser</b>	<b>Eddy County</b>		<b>911 or 505 746 2701</b>
<b>(Ambulance)</b>	<b>Lea County</b>	<b>Eunice</b>	<b>911 or 505 394 3258</b>
<b>Emergency Response</b>	<b>Eddy County SERC</b>		<b>505 476 9620</b>
	<b>Lea County</b>		
<b>Artesia Police Dept</b>			<b>505 746 5001</b>
<b>Artesia Fire Dept</b>			<b>505 746 5001</b>

**Pogo Producing Company**  
**J.R. Holt NCT "A" # 6**  
**Hydrogen Sulfide Contingency Plan**  
**For Drilling/Workover/Facility**

2530 ft FNL & 1980 ft FEL, Sec 16, T24S, R37E, Lea County

<b>Carlsbad Police Dept</b>		<b>505 885 2111</b>
<b>Carlsbad Fire Dept</b>		<b>505 885 3125</b>
<b>Loco Hills Police Dept</b>		<b>505 677 2349</b>
<b>Jal Police Dept</b>		<b>505 395 2501</b>
<b>Jal Fire Dept</b>		<b>505 395 2221</b>
<b>Jal ambulance</b>		<b>505 395 2221</b>
<b>Eunice Police Dept</b>		<b>505 394 0112</b>
<b>Eunice Fire Dept</b>		<b>505 394 3258</b>
<b>Eunice Ambulance</b>		<b>505 394 3258</b>
<b>Hobbs Police Dept</b>		
<b>NMOCD</b>	<i>CHAVEZ RANGES 29E</i> District 1 (Lea, Roosevelt, Curry) District 2 ( Eddy Chavez) <i>CHAVEZ RANGES 29E</i>	<b>505 393 6161</b> <b>505 748 1283</b>
<b>Lea County Information</b>		<b>505 393 8203</b>
<b>Callaway Safety</b>	<b>Lea/Eddy County</b>	<b>505 392 2973</b>
<b>BJ Services</b>	<b>Artesia</b>	<b>505 746 3140</b>
	<b>Hobbs</b>	<b>505 392 5556</b>
<b>Halliburton</b>	<b>Artesia</b>	<b>1 800 523 2482</b>
	<b>Hobbs</b>	<b>1 800 523 2482</b>
<b>Wild Well Control</b>	<b>Midland</b>	<b>432 550 6202</b>
	<b>Mobile</b>	<b>432 553 1166</b>

**Pogo Producing Company**  
**J.R. Holt NCT "A" # 6**  
**Hydrogen Sulfide Contingency Plan**  
**For Drilling/Workover/Facility**

2530 ft FNL & 1980 ft FEL, Sec 16, T24S, R37E, Lea County

**PROTECTION OF THE GENERAL PUBLIC ( ROE):**

- 100 ppm at any public area ( any place not associated with this site)
- 500 ppm at any public road ( any road which the general public may travel)
- 100 ppm radius of 3000 ft. will be assumed if there is insufficient data to do the calculations, and there is a reasonable expectation that H2S could be present in concentrations greater than 100 ppm in the gas mixture

**CALCULATIONS FOR THE 100 PPM (ROE) "Pasquill-Gifford equation"**

**$X = [(1.589) (\text{mole fraction}) (Q\text{- volume in std cu ft})] \text{ to the power of } (0.6258)$**

**CALCULATION FOR THE 500 PPM ROE:**

**$X = [(.4546) (\text{mole fraction}) (Q\text{- volume in std cu ft})] \text{ to the power of } (0.6258)$**

**Example:**

If a well/facility has been determined to have 150 / 500 ppm H2S in the gas mixture and the well/facility is producing at a gas rate of 100 MCFPD then:

150 ppm  $X = [(1.589) (.00015) (100,000 \text{ cfd})] \text{ to the power of } (.6258)$   
 $X = 7 \text{ ft}$

500 ppm  $X = [(.4546) (.0005) (100,000 \text{ cfd})] \text{ to the power of } (.6258)$   
 $X = 3.3 \text{ ft.}$

**( These calculations will be forwarded to the appropriate District NMOCD office when Applicable)**

**PUBLIC EVACUATION PLAN:**

- 1. Notification of the emergency response agencies of the hazardous condition and implement evacuation procedures.
- A trained person in H2S safety, shall monitor with detection equipment the H2S concentration, wind and area exposure (ROE). This person will determine the outer perimeter of the hazardous area. The extent of the evacuation area will be determined from the data being collected. Monitoring shall continue until the situation has been resolved. **( All monitoring equipment shall be UL approved, for use in class 1 groups A,B,C &D, Division 1, hazardous locations. All monitor will have a minimum capability of measuring H2S , oxygen, and flammable values).**

**Pogo Producing Company**  
**J.R. Holt NCT "A" # 6**  
**Hydrogen Sulfide Contingency Plan**  
**For Drilling/Workover/Facility**

2530 ft FNL & 1980 ft FEL, Sec 16, T24S, R37E, Lea County

- Law enforcement shall be notified to set up necessary barriers and maintain such for the duration of the situation as well as aid in the evacuation procedure.
- The company supervising personnel shall stay in communication with all agencies through out the duration of the situation and inform such agencies when the situation has been contained and the effected area(s) is safe to enter.

**PROCEDURE FOR IGNITING AN UNCONTROLABLE CONDITION:**

- 1. Human life and/or property are in danger
- 2. There is no hope of bringing the situation under control with the prevailing conditions at the site.

**INSTRUCTION FOR IGNITION:**

- 1. Two people are required. They must be equipped with positive pressure, self contained breathing apparatus and a "D" ring style full body, OSHA approved safety harness. Non flammable rope will be attached.
- 2. One of the people will be qualified safety person who will test the atmosphere for H<sub>2</sub>S, Oxygen & LFL. The other person will be the company supervisor; he is responsible for igniting the well.
- 3. Ignite up wind from a distance no closer than necessary. Make sure that where you ignite from has the maximum escape avenue available. A 25 mm flare gun shall be used, with a ± 500 ft. range to ignite the gas.
- 4. Prior to ignition, make a final check for combustible gases.
- 5. Following ignition, continue with the emergency actions & procedures as before.

**Pogo Producing Company**  
**J.R. Holt NCT "A" # 6**  
**Hydrogen Sulfide Contingency Plan**  
**For Drilling/Workover/Facility**

2530 ft FNL & 1980 ft FEL, Sec 16, T24S, R37E, Lea County

**REQUIRED EMERGENCY EQUIPMENT:**

- **1. Breathing apparatus:**
  - Rescue Packs (SCBA) – 1 unit shall be placed at each breathing area, 2 shall be stored in the safety trailer.
  - Work/Escapes packs – 4 packs shall be stored on the rig floor with sufficient air hose not to restrict work activity.
  - Emergency Escape Packs – 4 packs shall be stored in the doghouse for emergency evacuation.
- **2. Signage & Flagging:**
  - One color code condition sign will be placed at the entrance to the site reflecting the possible conditions at the site.
  - A colored condition flag will be on display, reflecting the condition at the site at the time.
- **3. Briefing Area: two perpendicular areas will be designated by signs and readily accessible.**
- **4. Wind Socks: Two wind socks will be placed in strategic locations, visible from all angles.**
- **5. H<sub>2</sub>S detectors and alarms: The stationary detector with three sensors will be placed in the upper dog house if equipped, set to visually alarm @ 10 ppm and audible @ 14 ppm. Calibrate a minimum of every 30 days or as needed. The sensors will be placed in the following places: ( Gas sample tubes will be stored in the safety trailer)**
  - Rig Floor
  - Bell Nipple
  - End of Flow line or where well bore fluid are being discharged.
- **6. Auxiliary Rescue Equipment:**
  - Stretcher
  - Two OSHA full body harness
  - 100 ft 5/8 inch OSHA approved rope
  - 1-20# class ABC fire extinguisher
  - Communication via cell phones on location and vehicles on location.

**Pogo Producing Company**  
**J.R. Holt NCT "A" # 6**  
**Hydrogen Sulfide Contingency Plan**  
**For Drilling/Workover/Facility**

2530 ft FNL & 1980 ft FEL, Sec 16, T24S, R37E, Lea County

**USING SELF CONTAINED BREATHING AIR EQUIPMENT (SCBA):**

- (SCBA) SHOULD BE WORN WHEN ANY OF THE FOLLOWING ARE PERFORMED:
  - Working near the top or on top of a tank
  - Disconnecting any line where H<sub>2</sub>S can reasonably be expected
  - Sampling air in the area to determine if toxic concentrations of H<sub>2</sub>S exist.
  - Working in areas where over 10 ppm on H<sub>2</sub>S has been detected.
  - At any time there is a doubt as to the level of H<sub>2</sub>S in the area.
- All personnel shall be trained in the use of SCBA prior to working in a potentially hazardous location.
- Facial hair and standard eyeglasses are not allowed with SCBA.
- Contact lenses are never allowed with SCBA.
- Air quality shall be continuously be checked during the entire operation.
- After each use, the SCBA unit shall be cleaned, disinfected, serviced and inspected
- All SCBA shall be inspected monthly.

**RESCUE AND FIRST AID FOR VICTIMS OF HYDROGEN SULFIDE (H<sub>2</sub>S) POISONING:**

- Do not panic
- Remain Calm & think
- Get on the breathing apparatus
- Remove the victim to the safe breathing area as quickly as possible. Up wind and uphill from source or cross wind to achieve upwind.
- Notify emergency response personnel.

**Pogo Producing Company  
J.R. Holt NCT "A" # 6  
Hydrogen Sulfide Contingency Plan  
For Drilling/Workover/Facility**

2530 ft FNL & 1980 ft FEL, Sec 16, T24S, R37E, Lea County

- Provide artificial respiration and or CPR, as necessary
- Remove all contaminated clothing to avoid further exposure.
- A minimum of two personnel on location shall be trained in CPR and First Aid.

## H2S TOXIC EFFECTS:

H2S is extremely toxic. The acceptable ceiling for eight hours of exposure is 10 ppm, which is .001% by volume. H2S is approximately 20% heavier than air (Sp.Gr=1.19 / Air=1 ) and color less. It forms an explosive mixture with air between 4.3% and 46.0%. By volume hydrogen sulfide (H2S) is almost as toxic as hydrogen cyanide and is 5-6 times more toxic than carbon monoxide.

### Various Gases

Common Name	Chemical Abbrev.	Sp. Gr.	Threshold Limits	Hazardous Limits	Lethal Concentration
Hydrogen Sulfide	H2S	1.19	10 ppm 15 ppm	100 ppm/ hr	600 ppm
Hydrogen Cyanide	HCN	0.94	10 ppm	150 ppm/ hr	300 ppm
Sulfur Dioxide	SO2	2.21	2 ppm	N/A	1000 ppm
Chlorine	CL2	2.45	1 ppm	4 ppm / hr	1000 ppm
Carbon Monoxide	CO	0.97	50 ppm	400 ppm / hr	1000 ppm
Carbon Dioxide	CO2	1.52	5000 ppm	5 %	10 %
Methane	CH4	0.55	90,000	Combustible @ 5%	N/A

- 1 Threshold limit – Concentrations at which it is believed that all workers may be repeatedly exposed, day after day without Adverse effects.
- 2 Hazardous limit – Concentration that may cause death
- 3 Lethal concentration – Concentration that will cause death with short-term exposure.
- 4 Threshold limit – 10 ppm – NIOSH guide to chemical hazards
- 5 Short-term threshold limit.

## PHYSICAL EFFECTS OF HYDROGEN SULFIDE:

CONCENTRATIONS		PYSICAL EFFECTS
.001%	10 ppm	Obvious and unpleasant odor. Safe for 8hr exposure
.005%	50 ppm	Can cause some flu-like symptoms and can cause pneumonia
.01%	100 ppm	Kills the sense of smell in 3 –15 minutes. May irritate eyes and throat.
.02%	200 ppm	Kills the sense of smell rapidly. Severly irritates eyes and throat. Severe flu-like symptoms after 4 or more hours. May cause lung damage and/or death.
.06%	600 ppm	Loss of consciousness quickly, death will result in not rescued promptly.

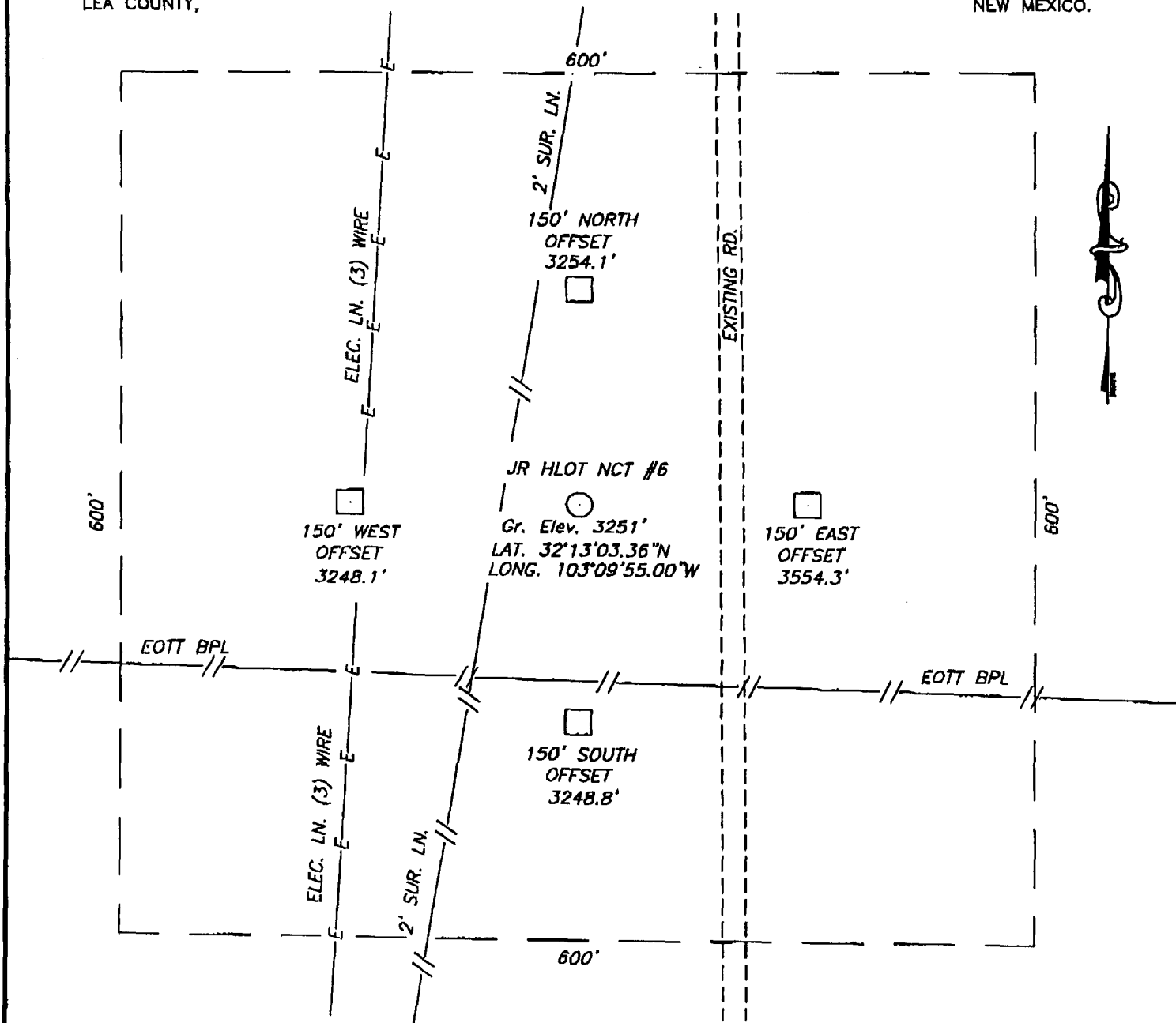
[illegible]

JOHN WEST SURVEYING  
HOBBS, NEW MEXICO  
(505) 393-3117

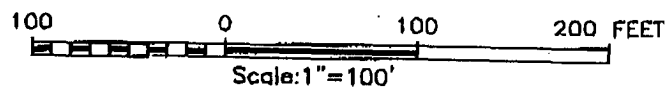
**SECTION 16, TOWNSHIP 24 SOUTH, RANGE 37 EAST, N.M.P.M.,**

LEA COUNTY,

NEW MEXICO.

**DRIVING DIRECTIONS**

FROM THE INTERSECTION OF STATE HWY #18 AND COOPER CEMETARY ROAD GO EAST ON COOPER CEMETARY RD. 1.6 MILES. TURN LEFT AND GO NORTH 0.5 MILES TO THIS LOCATION.

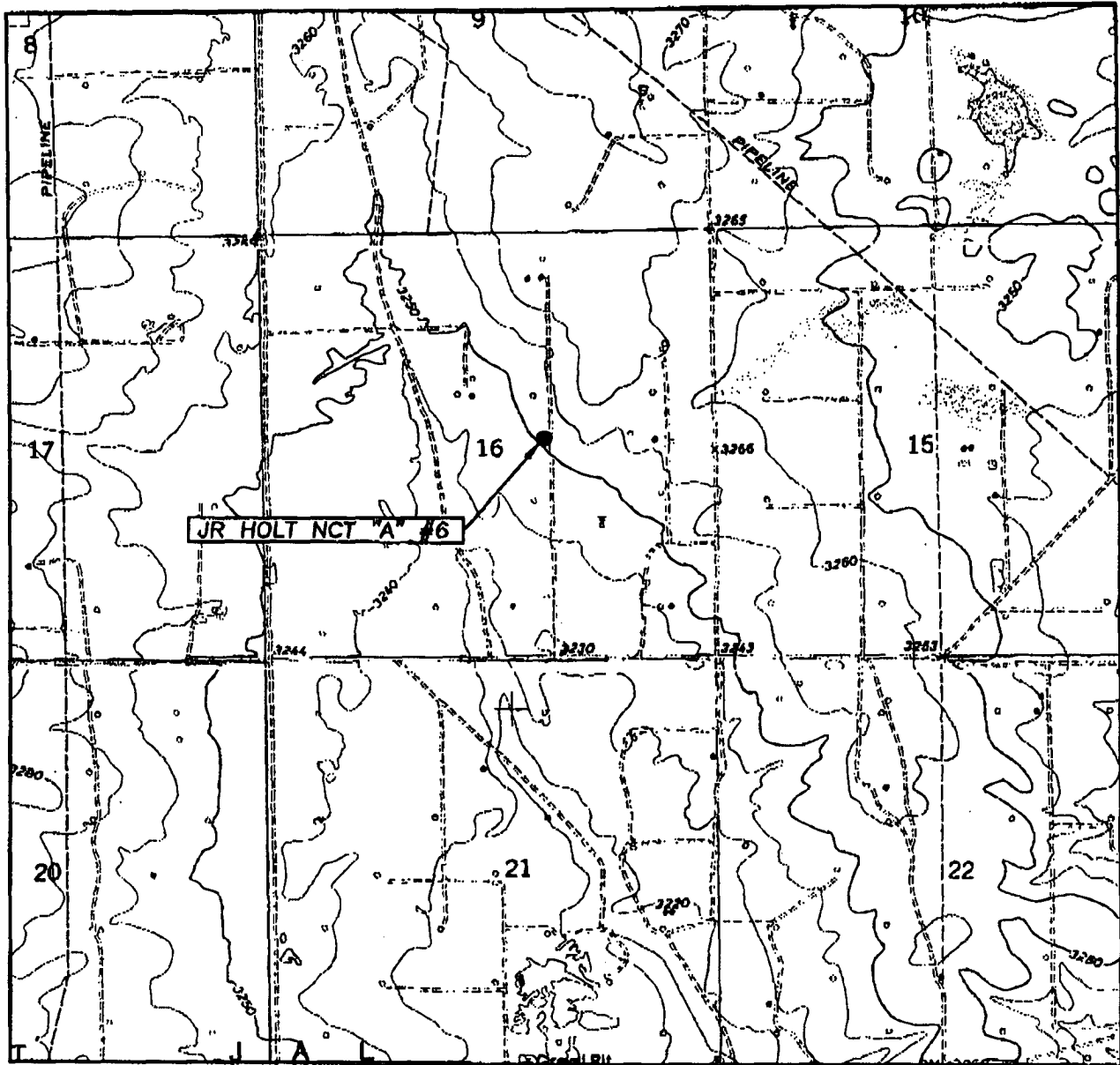
**POGO PRODUCING COMPANY**

JR HOLT NCT "A" #6 LOCATED 2530' FROM THE NORTH LINE AND 1980' FROM THE EAST LINE OF SECTION 16, TOWNSHIP 24 SOUTH, RANGE 37 EAST, LEA COUNTY, NEW MEXICO

Survey Date: 03/23/04	Sheet 1 of 1 Sheets
W.O. Number: 04.11.0337	DRAWN BY: A.W.B
Date: 03/24/04	DISK: CD#10
04.11.0337	Scale: 1"=100'

JOHN WEST SURVEYING COMPANY  
412 N. DAL PASO - HOBBS, NEW MEXICO - 505-393-3117

# LOCATION VERIFICATION MAP



SCALE: 1" = 2000'

CONTOUR INTERVAL: 20'  
SAN SIMON RANCH. N.M.SEC. 16 TWP. 24-S RGE. 37-ESURVEY N.M.P.M.COUNTY LEADESCRIPTION 2530' FNL & 1980' FELELEVATION 3251'OPERATOR POGO PRODUCING COMPANYLEASE JR HOLT NCT "A"U.S.G.S. TOPOGRAPHIC MAP  
SAN SIMON RANCH, N.M.**JOHN WEST SURVEYING  
HOBBS, NEW MEXICO  
(505) 393-3117**