

OCD-HOBBS

FORM APPROVED  
OMB No. 1004-0136  
Expires November 30, 2000

EC

UNITED STATES  
DEPARTMENT OF THE INTERIOR  
BUREAU OF LAND MANAGEMENT

E-0417

## APPLICATION FOR PERMIT TO DRILL OR REENTER

1a. Type of Work: <input checked="" type="checkbox"/> DRILL <input type="checkbox"/> REENTER		5. Lease Serial No. NMNM110834
1b. Type of Well: <input checked="" type="checkbox"/> Oil Well <input type="checkbox"/> Gas Well <input type="checkbox"/> Other <input checked="" type="checkbox"/> Single Zone <input type="checkbox"/> Multiple Zone		6. If Indian, Allottee or Tribe Name
2. Name of Operator MARBOB ENERGY CORPORATION		7. If Unit or CA Agreement, Name and No.
Contact: MELANIE PARKER E-Mail: marbob@marbob.com		8. Lease Name and Well No. MOE FEDERAL 7
3a. Address P. O. BOX 227 ARTESIA, NM 88211-0227	3b. Phone No. (include area code) Ph: 505.748.3303 Fx: 505.746.2523	9. API Well No. 30-025-36651
4. Location of Well (Report location clearly and in accordance with any State requirements. *) At surface NWSW Lot L 1650FSL 990FWL At proposed prod. zone NWSW Lot L 1650FSL 990FWL		10. Field and Pool, or Exploratory PEARSALL QUEEN Hobbs OCD
14. Distance in miles and direction from nearest town or post office*		11. Sec., T., R., M., or Blk. and Survey or Area Sec 34. T17S R32E Mer NMP SME: BLM
15. Distance from proposed location to nearest property or lease line, ft. (Also to nearest drig. unit line, if any)	16. No. of Acres in Lease 160.00	12. County or Parish LEA
17. Spacing Unit dedicated to this well 40.00	18. Distance from proposed location to nearest well, drilling, completed, applied for, on this lease, ft.	13. State NM
19. Proposed Depth 7000 MD	21. Elevations (Show whether DF, KB, RT, GL, etc.) 3910 GL	20. BLM/BIA Bond No. on file
22. Approximate date work will start 04/02/2004	23. Estimated duration 15 DAYS	

## 24. Attachments

Koswell Controlled Water Basin

The following, completed in accordance with the requirements of Onshore Oil and Gas Order No. 1, shall be attached to this form:

1. Well plat certified by a registered surveyor.
2. A Drilling Plan.
3. A Surface Use Plan (if the location is on National Forest System Lands, the SUPO shall be filed with the appropriate Forest Service Office).
4. Bond to cover the operations unless covered by an existing bond on file (see Item 20 above).
5. Operator certification
6. Such other site specific information and/or plans as may be required by the authorized officer.

25. Signature (Electronic Submission)	Name (Printed/Typed) MELANIE PARKER	Date 02/06/2004
Title AUTHORIZED REPRESENTATIVE		
Approved by (Signature) /S/ JOE G. LARA	Name (Printed/Typed) /S/ JOE G. LARA	Date MAR 29 2004
Title FIELD MANAGER	Office CARLSBAD FIELD OFFICE	

Application approval does not warrant or certify the applicant holds legal or equitable title to those rights in the subject lease which would entitle the applicant to conduct operations thereon.

Conditions of approval, if any, are attached.

APPROVAL FOR 1 YEAR

Title 18 U.S.C. Section 1001 and Title 43 U.S.C. Section 1212, make it a crime for any person knowingly and willfully to make to any department or agency of the United States any false, fictitious or fraudulent statements or representations as to any matter within its jurisdiction.

Additional Operator Remarks (see next page)

APPROVAL SUBJECT TO  
GENERAL REQUIREMENTS AND  
SPECIAL STIPULATIONS  
ATTACHEDElectronic Submission #27648 verified by the BLM Well Information System  
For MARBOB ENERGY CORPORATION, sent to the Hobbs Field Office  
Submitted to AFMSS for processing by ARMANDO LOPEZ on 02/06/2004 (04AL0953AE)OPER. OGRID NO. 14049  
PROPERTY NO. 33624  
WELL CODE 49970  
EFF. DATE 4-1-04  
API NO. 30-025-36651

\*\* BLM REVISED \*\* BLM REVISED \*\* BLM REVISED \*\* BLM REVISED \*\* BLM REVISED \*\* KZ

DISTRICT I  
P.O. Box 1888, Hobbs, NM 88241-1888

DISTRICT II  
P.O. Drawer 55, Artesia, NM 88211-0710

DISTRICT III  
4000 Rio Brazos Rd., Artec, NM 87410

DISTRICT IV  
P.O. Box 2088, Santa Fe, N.M. 87504-2088

State of New Mexico

Energy, Minerals and Natural Resources Department

Form C-102  
Revised February 10, 1994  
Submit to Appropriate District Office  
State Lease - 4 Copies  
Fee Lease - 3 Copies

OIL CONSERVATION DIVISION

P.O. Box 2088

Santa Fe, New Mexico 87504-2088

WELL LOCATION AND ACREAGE DEDICATION PLAT

☐ AMENDED REPORT

API Number <b>30-025-36651</b>	Pool Code <b>49970</b>	Pool Name <b>PEARSALL QUEEN</b>
Property Code <b>33624</b>	Property Name <b>MOE FEDERAL</b>	Well Number <b>7</b>
OGRIID No. <b>14049</b>	Operator Name <b>MARBOB ENERGY CORPORATION</b>	Elevation <b>3910'</b>

Surface Location

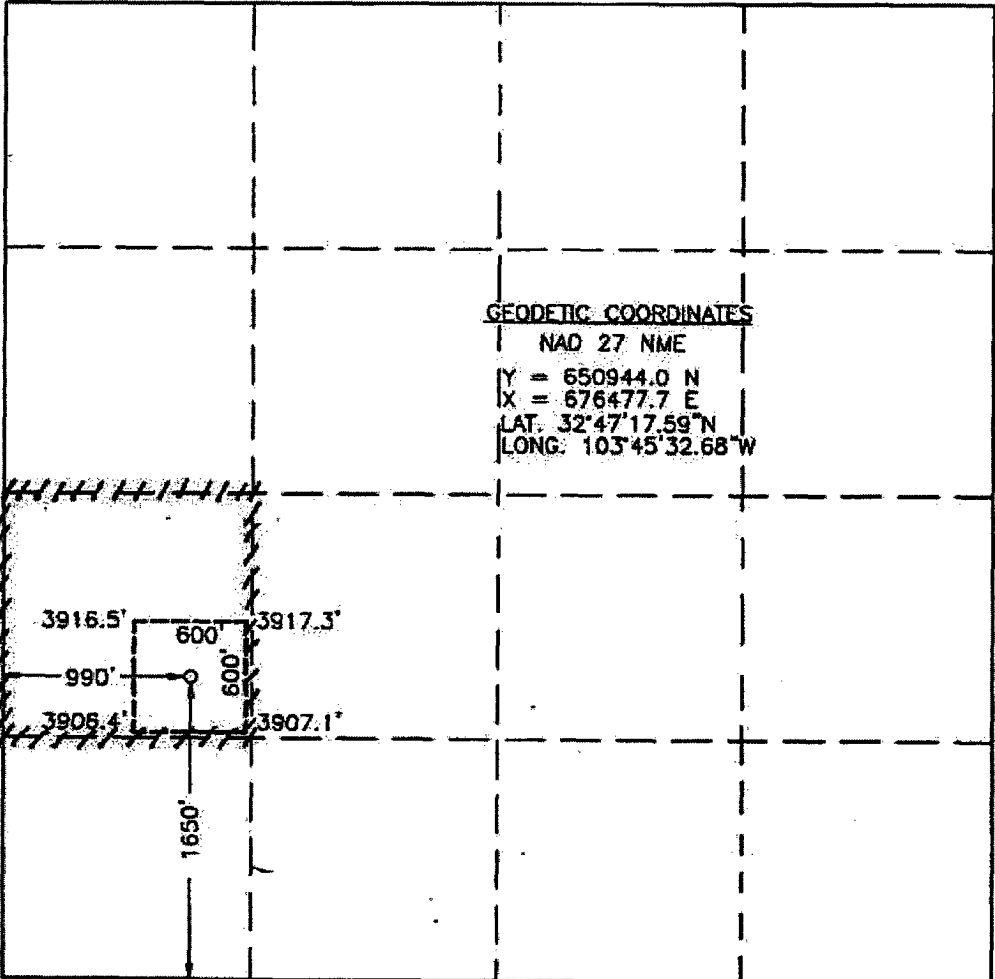
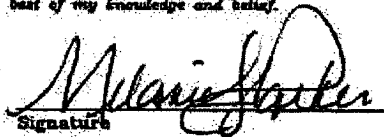
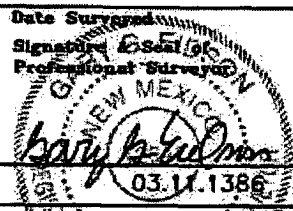
UL or lot No. <b>L</b>	Section <b>34</b>	Township <b>17-S</b>	Range <b>32-E</b>	Lot Idn	Feet from the <b>1650</b>	North/South line <b>SOUTH</b>	Feet from the <b>990</b>	East/West line <b>WEST</b>	County <b>LEA</b>
---------------------------	----------------------	-------------------------	----------------------	---------	------------------------------	----------------------------------	-----------------------------	-------------------------------	----------------------

Bottom Hole Location If Different From Surface

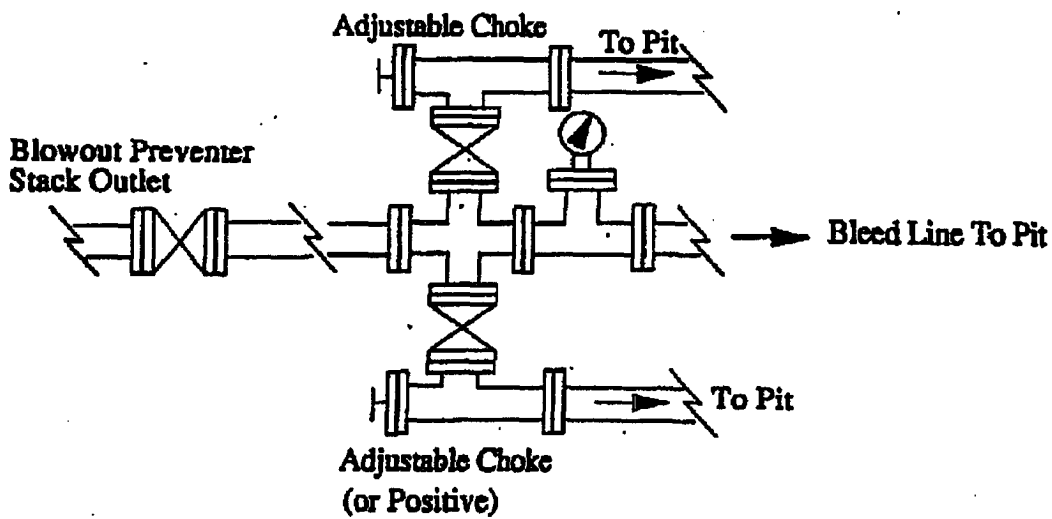
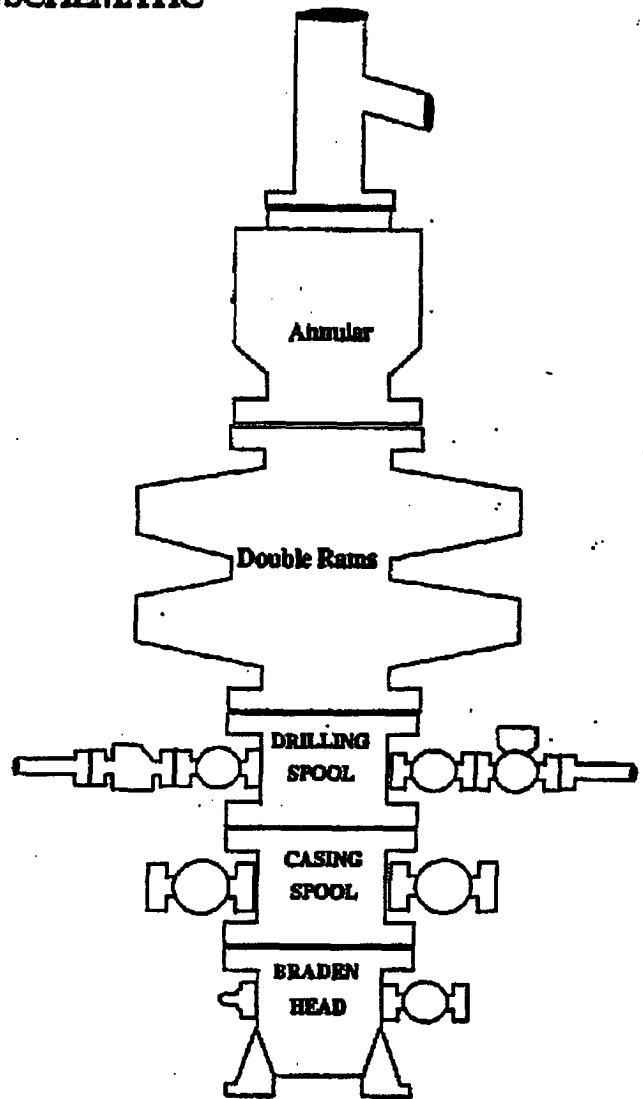
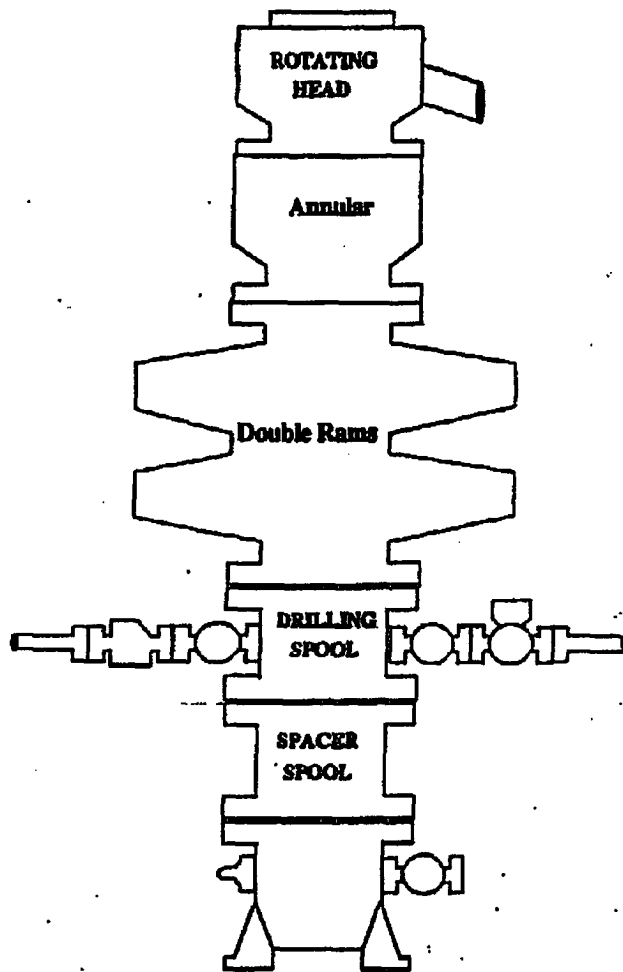
UL or lot No.	Section	Township	Range	Lot Idn	Feet from the	North/South line	Feet from the	East/West line	County
---------------	---------	----------	-------	---------	---------------	------------------	---------------	----------------	--------

Dedicated Acres <b>40</b>	Joint or Infill	Consolidation Code	Order No.
------------------------------	-----------------	--------------------	-----------

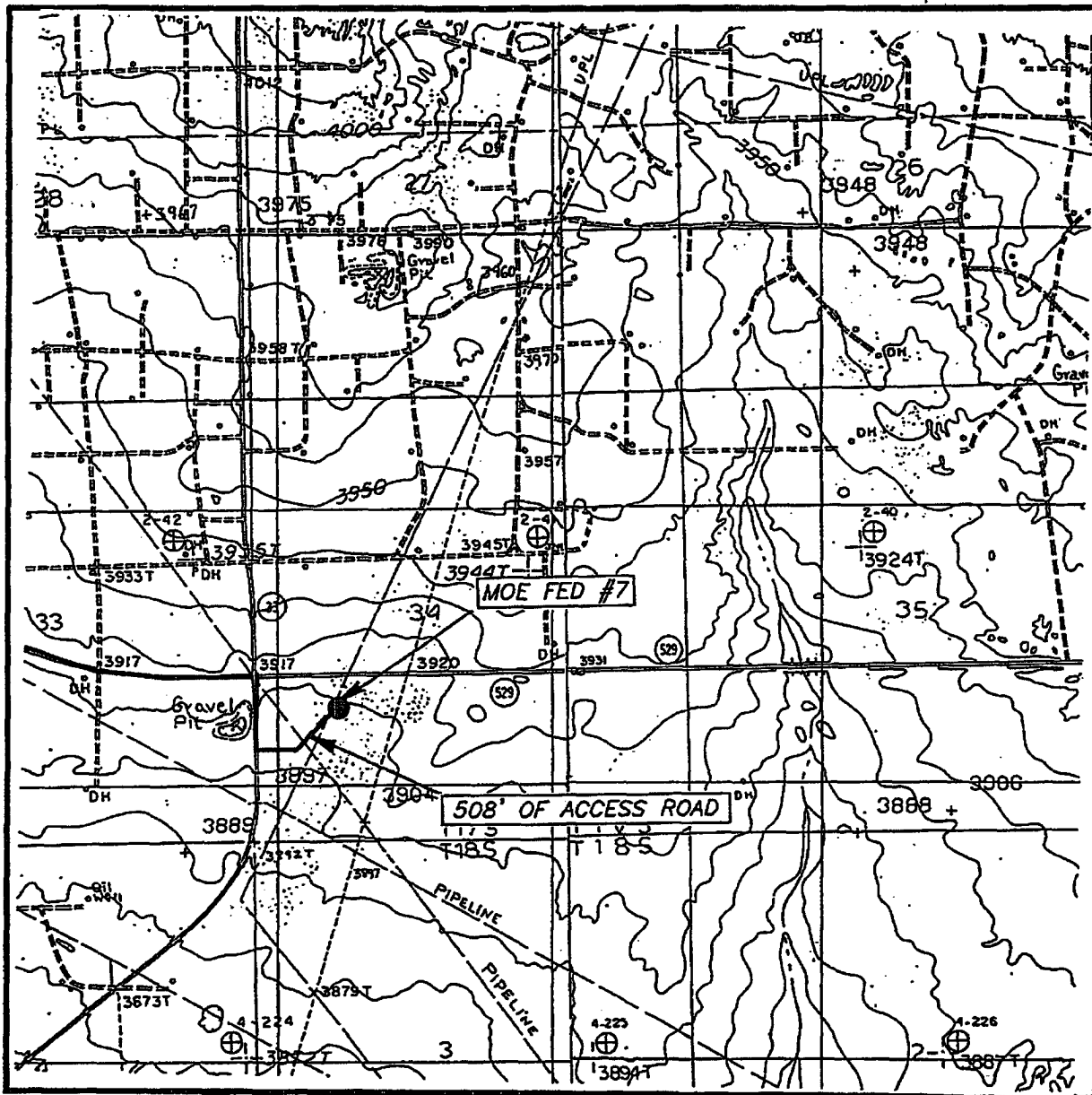
NO ALLOWABLE WILL BE ASSIGNED TO THIS COMPLETION UNTIL ALL INTERESTS HAVE BEEN CONSOLIDATED  
OR A NON-STANDARD UNIT HAS BEEN APPROVED BY THE DIVISION

	<p><b>GEODETIC COORDINATES</b> NAD 27 NME Y = 650944.0 N X = 676477.7 E LAT. 32°47'17.59"N LONG. 103°45'32.68"W</p>
	<p><b>OPERATOR CERTIFICATION</b></p> <p>I hereby certify the the information contained herein is true and complete to the best of my knowledge and belief.</p> <p> Signature Melanie J. Parker Printed Name Land Department Title February 6, 2004 Date</p> <p><b>SURVEYOR CERTIFICATION</b></p> <p>I hereby certify that the well location shown on this plat was plotted from field notes of actual surveys made by me or under my supervision and that the same is true and correct to the best of my belief.</p> <p>January 02, 2004</p> <p>Date Surveyed Signature of Seal of Professional Surveyor  1/12/03 Certification No. CAP-88000 12641</p>

# BOPE SCHEMATIC



# LOCATION VERIFICATION MAP



SCALE: 1" = 2000'

CONTOUR INTERVAL: 10'

MALJAMAR, & DOG LAKE, N.M.  
SUP, 5'

SEC. 34 TWP. 17-S RGE. 32-E

SURVEY N.M.P.M.

COUNTY LEA

DESCRIPTION 1650' FSL & 990' FWL

ELEVATION 3910'

OPERATOR MARBOB ENERGY CORPORATION

LEASE MOE FEDERAL

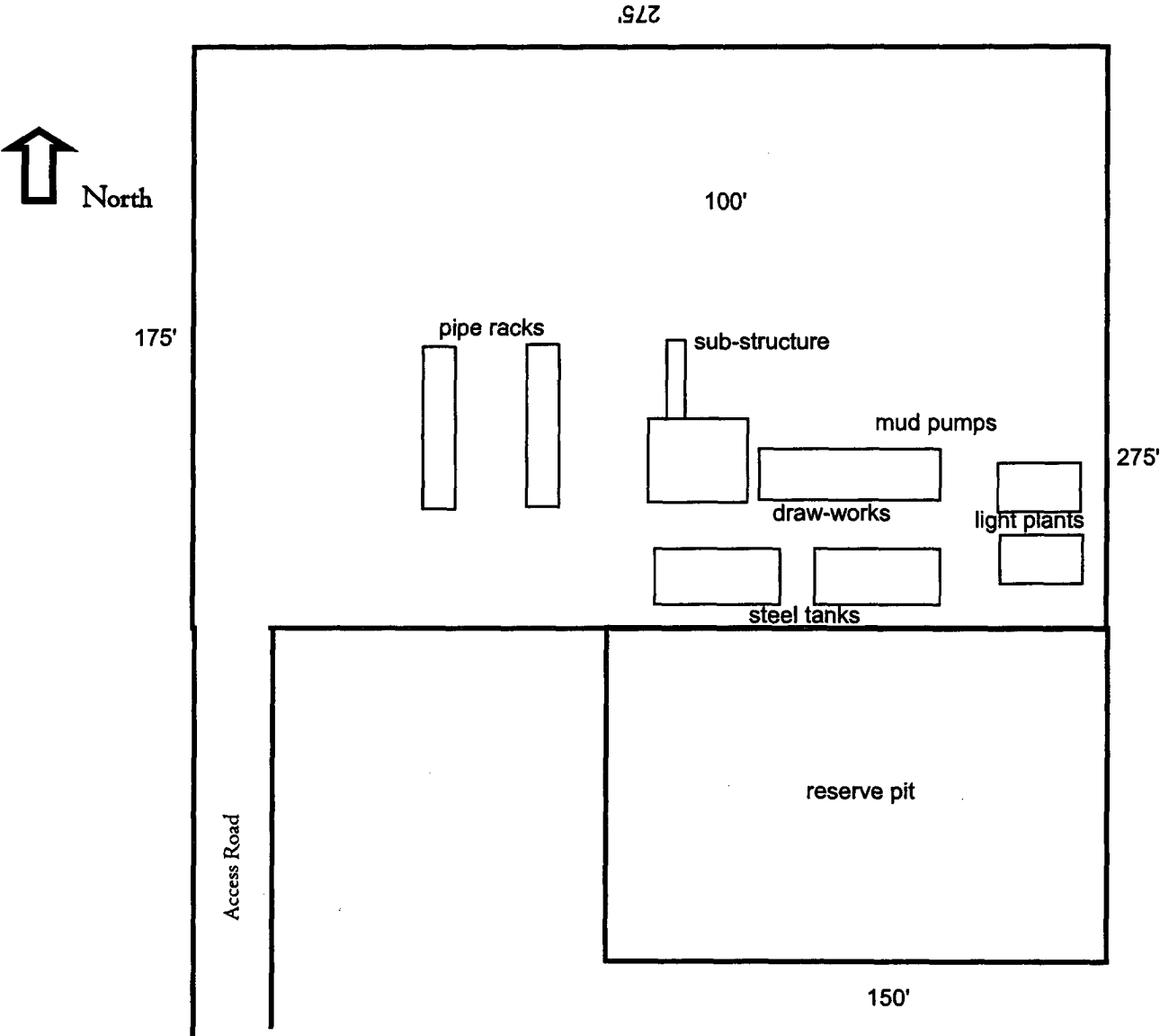
U.S.G.S. TOPOGRAPHIC MAP

MALJAMAR, & DOG LAKE, N.M.

**JOHN WEST SURVEYING**  
**HOBBS, NEW MEXICO**  
**(505) 393-3117**

**EXHIBIT TWO**

# Well Site Lay-Out Plat



Moe Federal No. 7  
1650' FSL & 990' FWL  
Section 34, T17S, R32E  
Lea County, New Mexico

EXHIBIT THREE

**MARBOB ENERGY CORPORATION**  
**DRILLING AND OPERATIONS PROGRAM**

**Moe Federal #7**  
**1650' FSL & 990' FWL, Unit L**  
**Section 34, T17S, R32E**  
**Lea County, New Mexico**

In conjunction with Form 3160-3, Application for Permit to Drill subject well, Marbob Energy Corporation submits the following ten items of pertinent information in accordance with BLM requirements.

1. The geological surface formation is Permian.
2. The estimated tops of geologic markers are as follows:

Rustler	1120'	Queen	3590'
Top of Salt	1270'	San Andres	4090'
Base of Salt	2200'	Bone Spring	6000'

3. The estimated depths at which anticipated water, oil or gas formations are expected to be encountered:

Queen	3590'	Oil
San Andres	4090'	Oil
Bone Spring	6000'	Oil

No other formations are expected to give up oil, gas, or fresh water in measurable quantities. The surface fresh water sands will be protected by setting 13 3/8" casing at 400' and circulating cement back to surface. Any shallower zones above TD which contain commercial quantities of oil and/or gas will have cement circulated across them by inserting a float shoe joint into the 5 1/2" production casing which will be run at TD to sufficiently cover all known oil and gas horizons above 200'.

4. Proposed Casing Program:

Hole Size	Interval	OD Casing	Wt	Grade
17 1/2"	0 - 400'	13 3/8"	48#	H-40
12 1/4"	0 - 2300'	8 5/8"	24#	J-55
7 7/8"	0 - 7000'	5 1/2"	17#	J-55

**Proposed Cement Program:**

13 3/8" Surface Casing: Cement w/ 400 sx Premium Plus. Circulate to surface.

8 5/8" Intermediate Casing: Cement w/ 900 sx Class C. Circulate to surface.

5 1/2" Production Casing: Cement w/ 750 sx Class H. Attempt to tie in to 8 5/8" csg.

5. Pressure Control Equipment: See Exhibit 1. Marbob proposes to nipple up on the 13 3/8" with a 2M system testing to 1000# with rig pumps, then nipple up on the 8 5/8" casing with a 2M system, testing it to 2000# with independent tester.

6. Mud Program: The applicable depths and properties of this system are as follows:

Depth	Type	Weight (ppg)	Viscosity (sec)	Waterloss (cc)
0' - 1270'	Fresh Wtr	8.4 - 9.2	32 - 36	N.C.
1270' - 2300'	Brine	9.9 - 10.2	28 - 32	N.C.
2300' - TD	Cut Brine	9.2 - 9.4	30 - 34	10 cc

7. Auxiliary Equipment: Kelly Cock; Sub with full opening valve on floor; and drill pipe connections.

8. Testing, Logging and Coring Program:

No drillstem tests are anticipated.

The electric logging program will consist of Dual Laterolog Micro SFL, Spectral Density Dual Spaced Neutron Csg Log, and Depth Control Log.

No conventional coring is anticipated.

9. No abnormal pressures or temperatures are anticipated.

10. Anticipated starting date: As soon as possible after approval.

**MARBOB ENERGY CORPORATION**  
**DRILLING AND OPERATIONS PROGRAM**

**Moe Federal #7**  
**1650' FSL & 990' FWL, Unit L**  
**Section 34, T17S, R32E**  
**Lea County, New Mexico**

In conjunction with Form 3160-3, Application for Permit to Drill subject well, Marbob Energy Corporation submits the following ten items of pertinent information in accordance with BLM requirements.

1. The geological surface formation is Permian.
2. The estimated tops of geologic markers are as follows:

Rustler	1120'	Queen	3590'
Top of Salt	1270'	San Andres	4090'
Base of Salt	2200'	Bone Spring	6000'

3. The estimated depths at which anticipated water, oil or gas formations are expected to be encountered:

Queen	3590'	Oil
San Andres	4090'	Oil
Bone Spring	6000'	Oil

No other formations are expected to give up oil, gas, or fresh water in measurable quantities. The surface fresh water sands will be protected by setting 13 3/8" casing at 400' and circulating cement back to surface. Any shallower zones above TD which contain commercial quantities of oil and/or gas will have cement circulated across them by inserting a float shoe joint into the 5 1/2" production casing which will be run at TD to sufficiently cover all known oil and gas horizons above 200'.

4. Proposed Casing Program:

Hole Size	Interval	OD Casing	Wt	Grade
17 1/2"	0 - 400'	13 3/8"	48#	H-40
12 1/4"	0 - 2300'	8 5/8"	24#	J-55
7 7/8"	0 - 7000'	5 1/2"	17#	J-55

**Proposed Cement Program:**

13 3/8" Surface Casing: Cement w/ 400 sx Premium Plus. Circulate to surface.

8 5/8" Intermediate Casing: Cement w/ 900 sx Class C. Circulate to surface.

5 1/2" Production Casing: Cement w/ 750 sx Class H. Attempt to tie in to 8 5/8" csg.



5. Pressure Control Equipment: See Exhibit 1. Marbob proposes to nipple up on the 13 3/8" with a 2M system testing to 1000# with rig pumps, then nipple up on the 8 5/8" casing with a 2M system, testing it to 2000# with independent tester.

6. Mud Program: The applicable depths and properties of this system are as follows:

Depth	Type	Weight (ppg)	Viscosity (sec)	Waterloss (cc)
0' - 1270'	Fresh Wtr	8.4 - 9.2	32 - 36	N.C.
1270' - 2300'	Brine	9.9 - 10.2	28 - 32	N.C.
2300' - TD	Cut Brine	9.2 - 9.4	30 - 34	10 cc

7. Auxiliary Equipment: Kelly Cock; Sub with full opening valve on floor; and drill pipe connections.

8. Testing, Logging and Coring Program:

No drillstem tests are anticipated.

The electric logging program will consist of Dual Laterolog Micro SFL, Spectral Density Dual Spaced Neutron Csg Log, and Depth Control Log.

No conventional coring is anticipated.

9. No abnormal pressures or temperatures are anticipated.

10. Anticipated starting date: As soon as possible after approval.

**MARBOB ENERGY CORPORATION**  
**MULTI-POINT SURFACE USE AND OPERATIONS PLAN**

**Moe Federal #7**  
**1650' FSL & 990' FWL, Unit L**  
**Section 34, T17S, R32E**  
**Lea County, New Mexico**

This plan is submitted with Form 3160-3, Application for Permit to Drill, covering the above described well. The purpose of this plan is to describe the location of the proposed well, the proposed construction activities and operations plan, the magnitude of the surface disturbance involved and the procedures to be followed in rehabilitating the surface after completion of the operations, so that a complete appraisal can be made of the environmental effect associated with the operations.

**1. EXISTING ROADS:**

Exhibit 2 is a portion of a topo map showing the well and roads in the vicinity of the proposed location. The proposed wellsite and the access route to the location are indicated in red on Exhibit 2.

**DIRECTIONS:**

Proceed east of Loco Hills approximately 5.6 miles on Hwy 62-180 to State Hwy 529. Take State Hwy 529 to CR 126. Turn south on CR 126 and proceed approximately 3/10 mile. Access road is on the east side of lease road.

**2. PLANNED ACCESS ROAD:**

A new access road of 508' will be necessary. The new road will be constructed as follows:

- A. The maximum width of the running surface will be 10'. The road will be crowned and ditched and constructed of 6" of rolled and compacted caliche. Ditches will be at 3:1 slope and 4 feet wide. Water will be diverted where necessary to avoid ponding, prevent erosion, maintain good drainage, and to be consistent with local drainage patterns. BLM may specify any additions or changes during the onsite inspection.
- B. The average grade will be less than 1%.
- C. No turnouts are planned.
- D. No culverts, cattleguard, gates, low-water crossings, or fence cuts are necessary.
- E. Surfacing material will consist of native caliche. Caliche will be obtained from the nearest BLM-approved caliche pit. Any additional materials that are required will be purchased from the dirt contractor.

- F. The proposed access road as shown in Exhibit 2 has been centerline flagged by John West Engineering.

**3. LOCATION OF EXISTING AND/OR PROPOSED FACILITIES:**

- A. Marbob Energy Corporation proposes a collection facility, if well is productive, to be located on Moe Federal #1 well pad.

**4. METHODS OF HANDLING WASTE DISPOSAL:**

- A. Drill cuttings will be disposed of in the lined pit.
- B. Drilling fluids will be allowed to evaporate in the lined pit until the pit is dry.
- C. Water produced during completion may be disposed into the lined reserve pit.
- D. All trash and debris will be removed from the wellsite within 30 days after finishing drilling and/or completion operations. All waste material will be contained to prevent scattering by the wind.

**5. WELLSITE LAYOUT:**

- A. Exhibit 3 shows the relative location and dimensions of the well pad, the pit.
- B. The reserve pit will be lined with high quality plastic sheeting.

**6. PLANS FOR RESTORATION:**

- A. After finishing drilling and/or completion operations, all equipment and other material not needed for further operations will be removed. The location will be cleaned of all trash and junk to leave the wellsite in as aesthetically pleasing a condition as possible.
- B. Reserve pit will be fenced until they have dried and been leveled.
- C. All rehabilitation and/or vegetation requirements of the BLM will be complied with and will be accomplished as expeditiously as possible. All pits will be filled level within 90 days after abandonment.

**7. SURFACE OWNERSHIP:**

The well site and lease are located on Federal surface

- A. The area around the well site is grassland and the top soil is sandy. The vegetation is native scrub grasses with abundant oakbrush, sagebrush, yucca, and prickly pear.
- B. A Cultural Resources Examination has been requested and will be forwarded to your office in the near future.

**8. OTHER INFORMATION:**

- A. Topography: Refer to the existing archaeological report for a description of the topography, flora, fauna, soil characteristics, dwellings, historical and cultural sites.

**9. OPERATOR'S REPRESENTATIVE:**

**A. Through A.P.D. Approval:**

Dean Chumbley, Landman  
Marbob Energy Corporation  
P. O. Box 227  
Artesia, NM 88211-0227  
Phone (505)748-3303  
Cell (505)748-5988

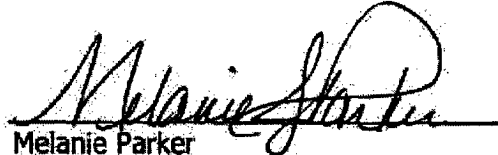
**B. Through Drilling Operations**

Sheryl Baker, Drilling Supervisor  
Marbob Energy Corporation  
P. O. Box 227  
Artesia, NM 88211-0227  
Phone (505)748-3303  
Cell (505)748-5489

**10. CERTIFICATION:**

I hereby certify that I, or persons under my direct supervision, have inspected the proposed drillsite and access route, that I am familiar with the conditions which presently exist; that the statements made in this plan are to the best of my knowledge, true and correct; and that the work associated with the operations proposed herein will be performed by Marbob Energy Corporation and its contractors and subcontractors in conformity with this plan and the terms and conditions under which it is approved. This statement is subject to the provisions of 18 U.S.C. 1001 for the filing of a false statement.

2/6/04  
Date

  
Melanie Parker  
Land Department

Moe Federal #7  
1650' FSL & 990' FWL, Unit L  
Section 34, T17S, R32E  
Lea County, New Mexico

## **MARBOB ENERGY CORPORATION**

### **HYDROGEN SULFIDE DRILLING OPERATIONS PLAN**

#### **I. HYDROGEN SULFIDE TRAINING**

All personnel, whether regularly assigned, contracted, or employed on an unscheduled basis, will receive training from a qualified instructor in the following areas prior to commencing drilling operations on this well:

- A. The hazards and characteristics of hydrogen sulfide (H<sub>2</sub>S).
- B. The proper use and maintenance of personal protective equipment and life support systems.
- C. The proper use of H<sub>2</sub>S detectors, alarms, warning systems, briefing areas, evacuation procedures, and prevailing winds.
- D. The proper techniques for first aid and rescue procedures.

In addition, supervisory personnel will be trained in the following areas:

- A. The effects of H<sub>2</sub>S on metal components. If high tensile tubulars are to be used, personnel will be trained in their special maintenance requirements.
- B. Corrective action and shut-in procedures when drilling or reworking a well and blowout prevention and well control procedures.
- C. The contents and requirements of the H<sub>2</sub>S Drilling Operations Plan and the Public Protection Plan.

There will be an initial training session just prior to encountering a known or probable H<sub>2</sub>S zone (within 3 days or 500 feet) and weekly H<sub>2</sub>S and well control drills for all personnel in each crew. The initial training session shall include a review of the site specific H<sub>2</sub>S Drilling Operations Plan and the Public Protection Plan. This plan shall be available at the well site. All personnel will be required to carry documentation that they have received the proper training.

## **II. H<sub>2</sub>S SAFETY EQUIPMENT AND SYSTEMS**

Note: All H<sub>2</sub>S safety equipment and systems will be installed, tested, and operational when drilling reaches a depth of 500 feet above, or three days prior to penetrating the first zone containing or reasonably expected to contain H<sub>2</sub>S.

### **A. Well Control Equipment:**

Flare line.

Choke manifold.

Blind rams and pipe rams to accommodate all pipe sizes with properly sized closing unit.

Auxiliary equipment to include: annular preventer, mud-gas separator, rotating head.

### **B. Protective equipment for essential personnel:**

Mark II Surviveair 30-minute units located in the dog house and at briefing areas.

### **C. H<sub>2</sub>S detection and monitoring equipment:**

2 - portable H<sub>2</sub>S monitor positioned on location for best coverage and response. These units have warning lights and audible sirens when H<sub>2</sub>S levels of 20 ppm are reached.

### **D. Visual warning systems:**

Caution/Danger signs shall be posted on roads providing direct access to location. Signs will be painted a high visibility yellow with black lettering of sufficient size to be readable at a reasonable distance from the immediate location. Bilingual signs will be used, when appropriate. See example attached.

E. Mud Program:

The mud program has been designed to minimize the volume of H<sub>2</sub>S circulated to the surface.

A mud-gas separator will be utilized.

F. Metallurgy:

All drill strings, casings, tubing, wellhead, blowout preventers, drilling spool, kill lines, choke manifold and lines, and valves shall be suitable for H<sub>2</sub>S service.

G. Communication:

Company vehicles equipped with cellular telephone and 2-way radio.

# **W A R N I N G**

**YOU ARE ENTERING AN H<sub>2</sub>S AREA  
AUTHORIZED PERSONNEL ONLY**

- 1. BEARDS OR CONTACT LENSES NOT ALLOWED**
- 2. HARD HATS REQUIRED**
- 3. SMOKING IN DESIGNATED AREAS ONLY**
- 4. BE WIND CONSCIOUS AT ALL TIMES**
- 5. CK WITH MARBOB FOREMAN AT MAIN OFFICE**

**MARBOB ENERGY CORPORATION**

**1-505-748-3303**



# STATEMENT ACCEPTING RESPONSIBILITY FOR OPERATIONS

The undersigned accepts all applicable terms, conditions, stipulations, and restrictions concerning operations conducted on the leased land or portion thereof, as described below:

Date: February 4, 2004

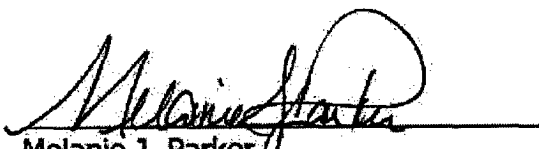
Lease #: NM-110834  
Moe Federal

Legal Description: SW/4 Sec. 34-T17S-R32E  
Lea County, New Mexico

Formation(s): Pearsall Queen

Bond Coverage: Statewide

BLM Bond File #: 585716



Melanie J. Parker  
Land Department