

District I  
1625 N. French Dr., Hobbs, NM 88240  
District II  
1301 W. Grand Avenue, Artesia, NM 88210  
District III  
1000 Rio Brazos Road, Aztec, NM 87410  
District IV  
1220 S. St. Francis Dr., Santa Fe, NM 87505

State of New Mexico  
Energy Minerals and Natural Resources

Form C-101  
Revised June 10, 2003

Oil Conservation Division  
1220 South St. Francis Dr.  
Santa Fe, NM 87505

Submit to appropriate District Office  
State Lease - 6 Copies  
Fee Lease - 5 Copies

☐ AMENDED REPORT

**APPLICATION FOR PERMIT TO DRILL, RE-ENTER, DEEPEN, PLUGBACK, OR ADD A ZONE**

<sup>1</sup> Operator Name and Address John H. Hendrix Corporation P. O. Box 3040 Midland, TX 79702-3040		<sup>2</sup> OGRID Number 012024	
<sup>3</sup> Property Code 005236		<sup>4</sup> Property Name W. W. Weatherly	
		<sup>5</sup> API Number 30 - 025 - 36659	
		<sup>6</sup> Well No. 8	

<sup>7</sup> Surface Location

UL or lot no.	Section	Township	Range	Lot Idn	Feet from the	North/South line	Feet from the	East/West line	County
J	17	21S	37E		1650'	South	1650	East	Lea

<sup>8</sup> Proposed Bottom Hole Location If Different From Surface

UL or lot no.	Section	Township	Range	Lot Idn	Feet from the	North/South line	Feet from the	East/West line	County

<sup>9</sup> Proposed Pool 1 Penrose Skelly Grayburg-Pool Code 50350	<sup>10</sup> Proposed Pool 2
---	-------------------------------

<sup>11</sup> Work Type Code N	<sup>12</sup> Well Type Code O	<sup>13</sup> Cable/Rotary R	<sup>14</sup> Lease Type Code P	<sup>15</sup> Ground Level Elevation 3481'
<sup>16</sup> Multiple No	<sup>17</sup> Proposed Depth 4250'	<sup>18</sup> Formation Penrose Skelly GB	<sup>19</sup> Contractor Patterson-UTI	<sup>20</sup> Spud Date

<sup>21</sup> Proposed Casing and Cement Program

Hole Size	Casing Size	Casing weight/foot	Setting Depth	Sacks of Cement	Estimated TOC
11"	8-5/8"	24#	410'	200	Surface
7-7/8"	5-1/2"	15.5#	4250'	600	Surface

<sup>22</sup> Describe the proposed program. If this application is to DEEPEN or PLUG BACK, give the data on the present productive zone and proposed new productive zone.

Describe the blowout prevention program, if any. Use additional sheets if necessary.

1. Drill 11" hole to 410' & set 8-5/8" surface csg. Circ. cement to surface.
2. Drill 7-7/8" hole to 4250'. Set 5-1/2" csg. & cement to surface.
3. Run cased hole log, perf. selected intervals, acidize & frac.
4. Test well.



<sup>23</sup> I hereby certify that the information given above is true and complete to the best of my knowledge and belief. Signature: <i>Ronnie H. Westbrook</i>		OIL CONSERVATION DIVISION	
Printed name: Ronnie H. Westbrook		Approved by: <i>Paul J. Keady</i>	
Title: Vice President		Title: PETROLEUM ENGINEER	
E-mail Address:		Approval Date: APR 05 2004	
Date: 03/31/2004		Expiration Date:	
Phone: (432)684-6631		Conditions of Approval:	
		Attached <input type="checkbox"/>	

## DISTRICT I

P.O. Box 1980, Hobbs, NM 88241-1980

## State of New Mexico

Energy, Minerals and Natural Resources Department

Form C-102

Revised February 10, 1994

Submit to Appropriate District Office

State Lease - 4 Copies

Fee Lease - 3 Copies

## DISTRICT II

P.O. Drawer DD, Artesia, NM 88211-0719

## OIL CONSERVATION DIVISION

P.O. Box 2088

Santa Fe, New Mexico 87504-2088

## DISTRICT III

1000 Rio Brazos Rd., Aztec, NM 87410

## DISTRICT IV

P.O. BOX 2088, SANTA FE, N.M. 87504-2088

## WELL LOCATION AND ACREAGE DEDICATION PLAT

☐ AMENDED REPORT

API Number <u>30-025-36659</u>	Pool Code 50350	Pool Name Penrose Skelly Grayburg
Property Code 005236	Property Name W.W. WEATHERLY	Well Number 8
OGRID No. 012024	Operator Name JOHN H. HENDRIX CORPORATION	Elevation 3481'

## Surface Location

UL or lot No.	Section	Township	Range	Lot Idn	Feet from the	North/South line	Feet from the	East/West line	County
J	17	21-S	37-E		1650	SOUTH	1650	EAST	LEA

## Bottom Hole Location If Different From Surface

UL or lot No.	Section	Township	Range	Lot Idn	Feet from the	North/South line	Feet from the	East/West line	County

Dedicated Acres	Joint or Infill	Consolidation Code	Order No.
40			

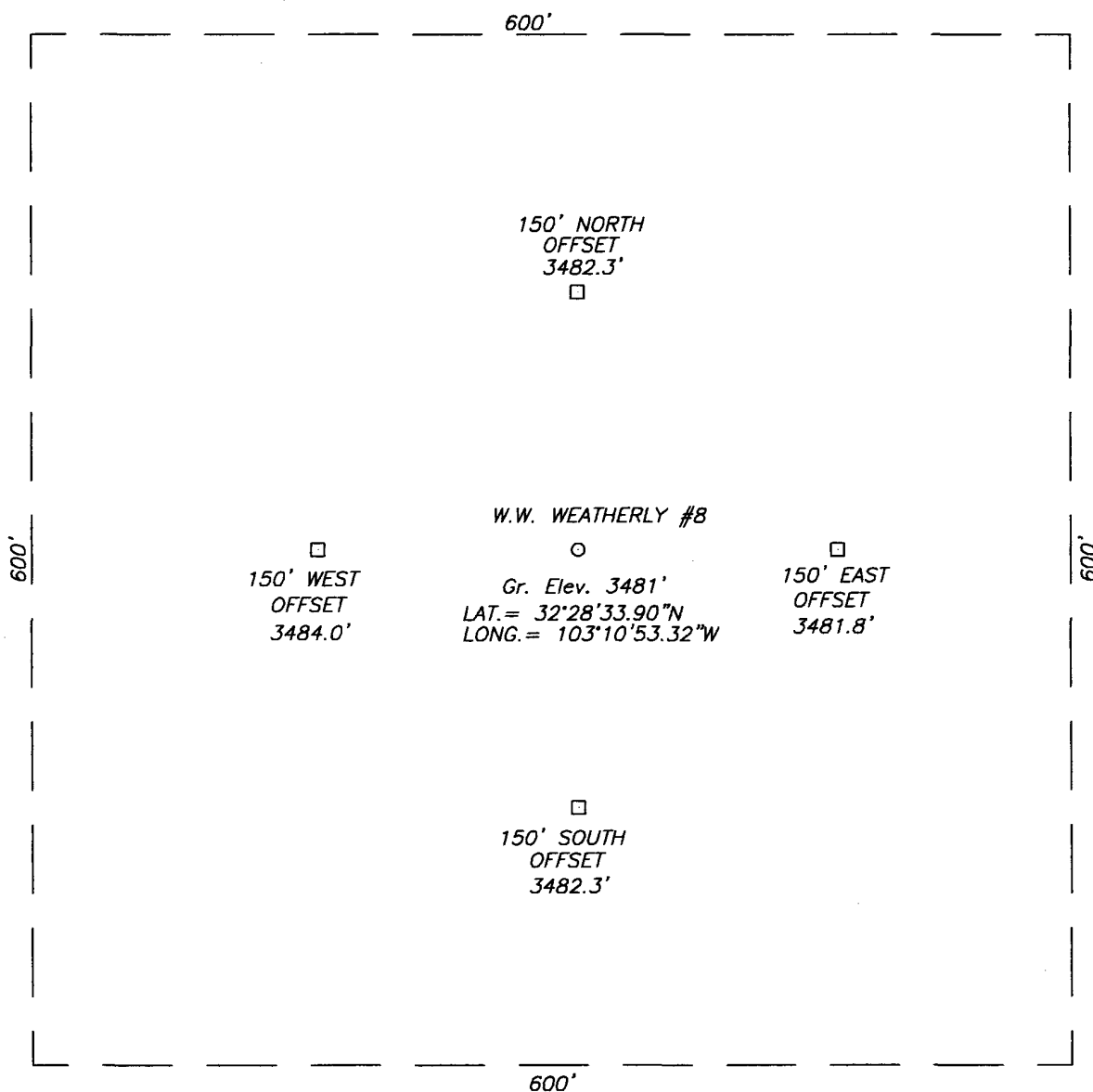
NO ALLOWABLE WILL BE ASSIGNED TO THIS COMPLETION UNTIL ALL INTERESTS HAVE BEEN CONSOLIDATED  
OR A NON-STANDARD UNIT HAS BEEN APPROVED BY THE DIVISION

<p>GEODETIC COORDINATES NAD 27 NMEZ Y = 538829.8 N X = 855221.93 LAT. = 32°28'33.90"N LONG. = 103°10'53.32"W</p>	<b>OPERATOR CERTIFICATION</b>  I hereby certify the the information contained herein is true and complete to the best of my knowledge and belief.   Signature  Ronnie H. Westbrook Printed Name  Vice President Title  March 31, 2004 Date
	<b>SURVEYOR CERTIFICATION</b>  I hereby certify that the well location shown on this plat was plotted from field notes of actual surveys made by me or under my supervision, and that the same is true and correct to the best of my belief.  March 24, 2004 Date Surveyed Signature & Seal of Professional Surveyor  Certified No. GARY EIDSON 12641

# SECTION 17, TOWNSHIP 21 SOUTH, RANGE 37 EAST, N.M.P.M.,

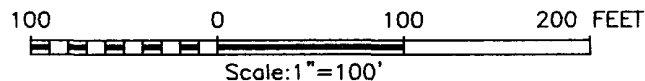
LEA COUNTY,

NEW MEXICO.



## DIRECTIONS TO LOCATION:

FROM THE INTERSECTION OF STATE HWY #8 AND CO. RD. #33 (N. TURNER RD.) GO NORTH ON TURNER RD. 1.9 MILES. GO NORTHWEST ON A CALICHE RD. 0.5 MILES. GO WEST ON A CALICHE RD. 0.10 MILE. THIS LOCATION IS APPROX. 250' SOUTH.



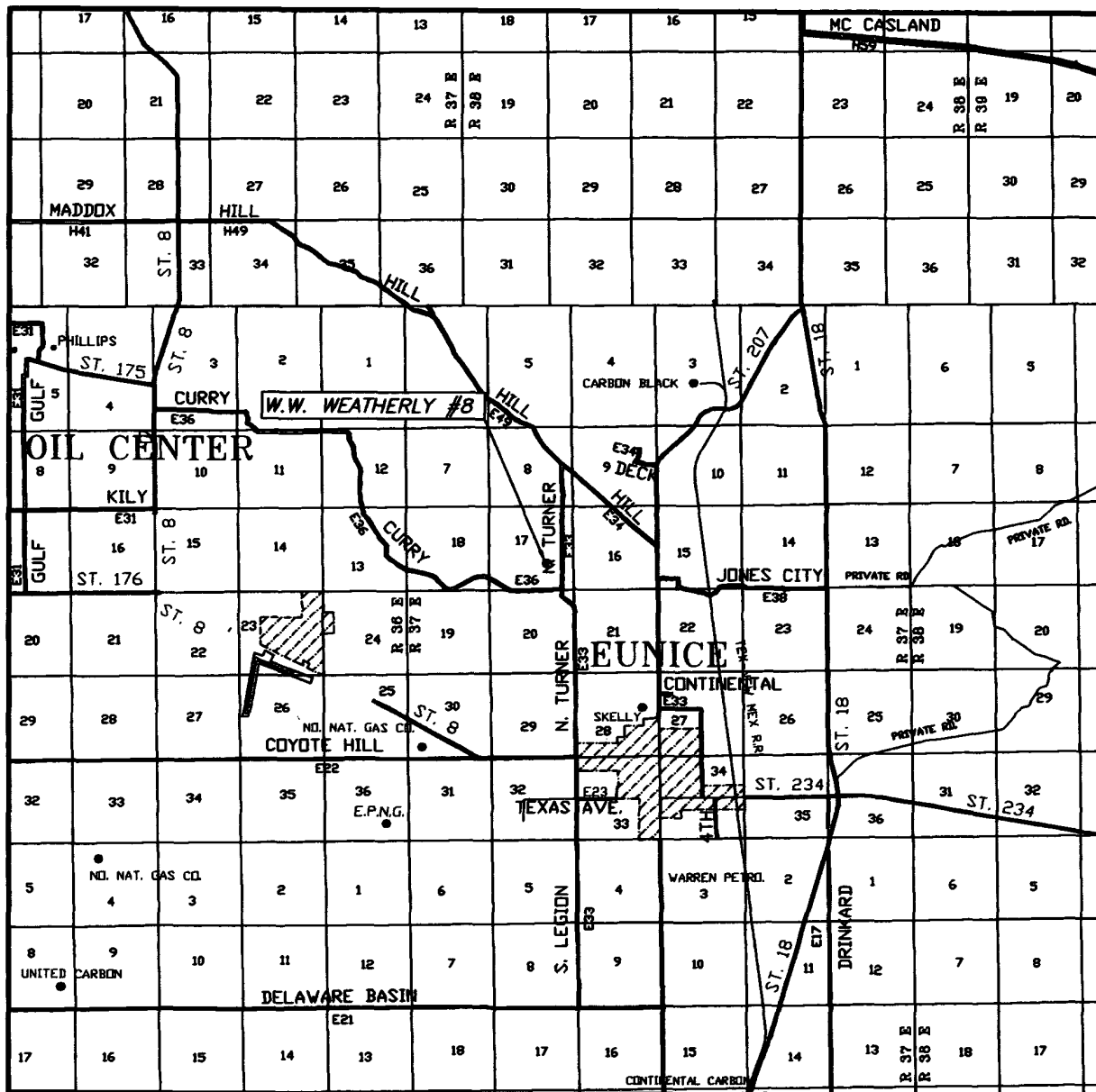
PROVIDING SURVEYING SERVICES  
SINCE 1946  
**JOHN WEST SURVEYING COMPANY**  
412 N. DAL PASO  
HOBBS, N.M. 88240  
(505) 383-3117

## **JOHN H. HENDRIX CORP.**

W.W. WEATHERLY #8 LOCATED 1650' FROM  
THE SOUTH LINE AND 1650' FROM THE EAST LINE OF  
SECTION 17, TOWNSHIP 21 SOUTH, RANGE 37 EAST,  
LEA COUNTY, NEW MEXICO

Survey Date: 03/24/04	Sheet 1 of 1 Sheets
W.O. Number: 04.11.0319	DRAWN BY: A.W.B
Date: 03/26/04	DISK: CD#10
04.11.0319	Scale: 1"=100'

# VICINITY MAP

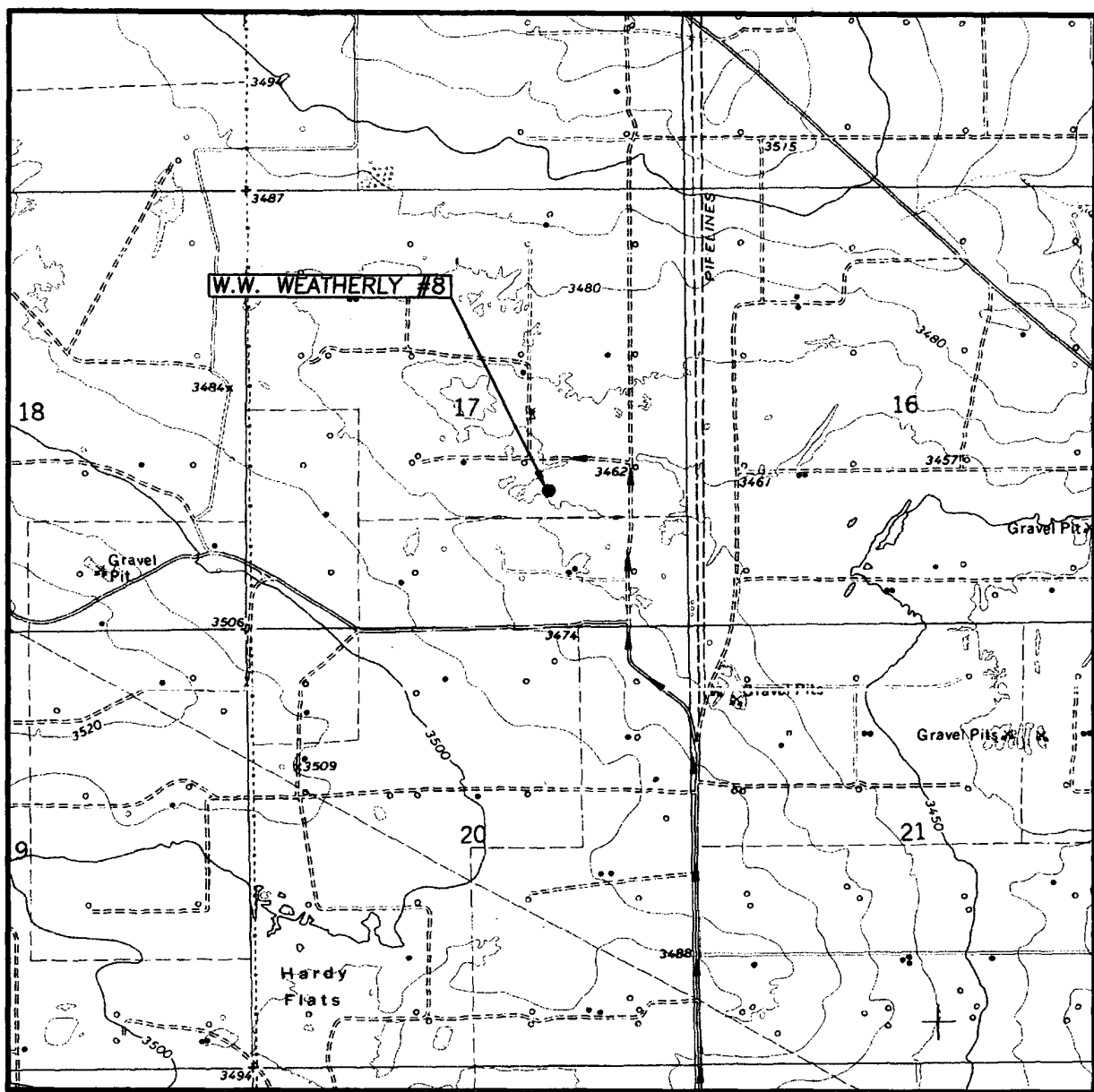


SCALE: 1" = 2 MILES

SEC. 17 TWP. 21-S RGE. 37-E  
 SURVEY N.M.P.M.  
 COUNTY LEA  
 DESCRIPTION 1650' FSL & 1650' FEL  
 ELEVATION 3481'  
 OPERATOR JOHN H. HENDRIX CORPORATION  
 LEASE W.W. WEATHERLY

HOBBS, NEW MEXICO  
 (505) 393-3117

# LOCATION VERIFICATION MAP



SCALE: 1" = 2000'

CONTOUR INTERVAL: 10'

EUNICE, N.M.

SEC. 17 TWP. 21-S RGE. 37-E

SURVEY N.M.P.M.

COUNTY LEA

DESCRIPTION 1650' FSL & 1650' FEL

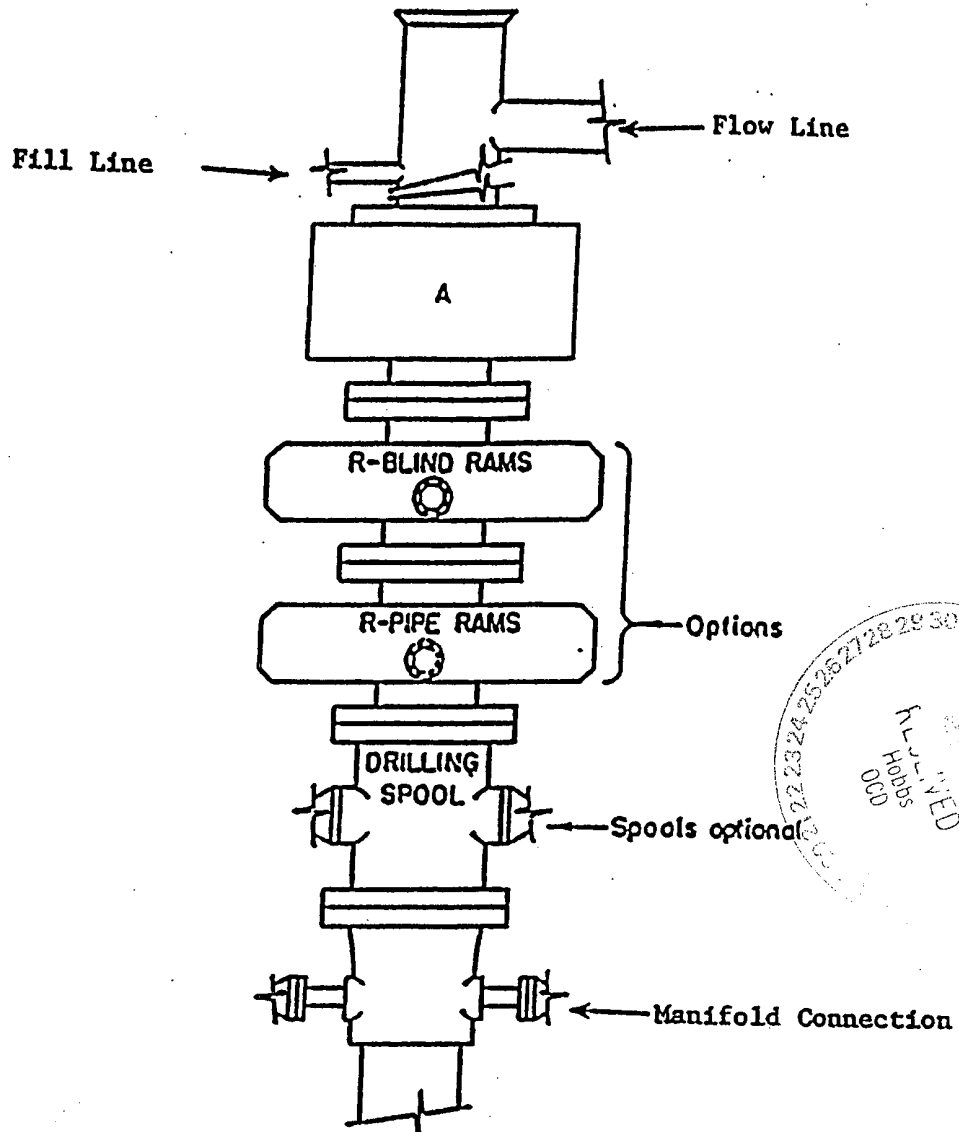
ELEVATION 3481'

OPERATOR JOHN H. HERNDRIX CORPORATION

LEASE W.W. WEATHERLY

U.S.G.S. TOPOGRAPHIC MAP  
EUNICE, N.M.

**JOHN WEST SURVEYING**  
**HOBBS, NEW MEXICO**  
**(505) 393-3117**



**ARRANGEMENT SRRA**

900 Series

3000 PSI WP

JOHN H. HENDRIX CORPORATION  
 Sketch of BOP  
 To Be Used  
 W. W. Weatherly No. 8  
 800' FNL & 2450' FEL  
 Lea County, New Mexico