

DISTRICT I

P.O. Box 1980, Hobbs, NM 88241-1980

DISTRICT II

P.O. Box Drawer DD, Artesia, NM 88211-0719

DISTRICT III

1000 Rio Brazos Rd., Aztec, NM 87410

DISTRICT IV

P.O. Box 2088, Santa Fe, NM 87504-2088

State of New Mexico

Energy, Minerals and Natural Resources Department

OIL CONSERVATION DIVISION

P.O. Box 2088

Santa Fe, New Mexico 87504-2088

Form C-102

Revised February 10, 1999

Instructions on back

Submit to Appropriate District Office

State Lease - 4 Copies

Fee Lease - 3 Copies

☐ AMENDED REPORT

WELL LOCATION AND ACREAGE DEDICATION PLAT

¹ API Number 30 025 06041	² Pool Code 76480	³ Pool Name EUMONT YATES 7 RVRS QN (GAS)
⁴ Property Code 11127	⁵ Property Name VAN ETEN, L.	⁶ Well No. 1
⁷ OGRID Number 4323	⁸ Operator Name CHEVRON USA INC	⁹ Elevation 3552'

¹⁰ Surface Location

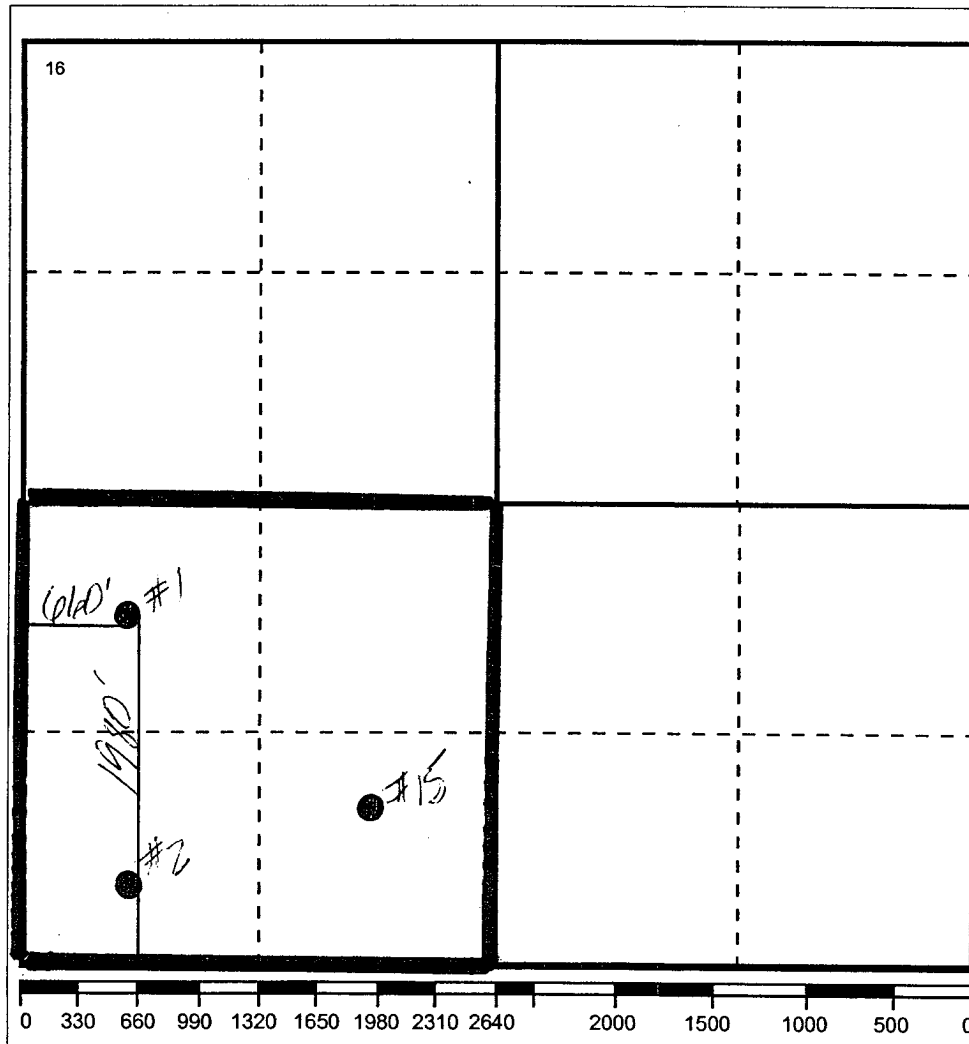
Ul or lot no L	Section 9	Township 20-S	Range 37-E	Lot.Idn	Feet From The 1980	North/South Line SOUTH	Feet From The 660	East/West Line WEST	County LEA
-------------------	--------------	------------------	---------------	---------	-----------------------	---------------------------	----------------------	------------------------	---------------

¹¹ Bottom Hole Location If Different From Surface

Ul or lot no.	Section	Township	Range	Lot.Idn	Feet From The	North/South Line	Feet From The	East/West Line	County
---------------	---------	----------	-------	---------	---------------	------------------	---------------	----------------	--------

¹² Dedicated Acre 160	¹³ Joint or Infill No	¹⁴ Consolidation Code	¹⁵ Order No. NSP-1435
-------------------------------------	-------------------------------------	----------------------------------	-------------------------------------

NO ALLOWABLE WILL BE ASSIGNED TO THIS COMPLETION UNTIL ALL INTERESTS HAVE BEEN CONSOLIDATED
OR A NON-STANDARD UNIT HAS BEEN APPROVED BY THE DIVISION

¹⁷ OPERATOR CERTIFICATION

I hereby certify that the information contained herein is true and complete to the best of my knowledge and belief

Signature

Printed Name

Denise Leake

Positio

Regulatory Specialist

Date

2/16/2004

¹⁸ SURVEYOR CERTIFICATION

I hereby certify that the well location shown on this plat was plotted from field notes of actual surveys made by me or under my supervision, and that the same is true and correct to the best of my knowledge and belief.

Date Surveyed

Signature & Seal of
Professional Surveyor

Certificate No.

DISTRICT I

P.O. Box 1980, Hobbs, NM 88241-1980

DISTRICT II

P.O. Box Drawer DD, Artesia, NM 88211-0719

DISTRICT III

1000 Rio Brazos Rd., Aztec, NM 87410

DISTRICT IV

P.O. Box 2088, Santa Fe, NM 87504-2088

State of New Mexico

Energy, Minerals and Natural Resources Department

Form C-102

Revised February 10, 1999

Instructions on back

Submit to Appropriate District Office

State Lease - 4 Copies

Fee Lease - 3 Copies

☐ AMENDED REPORT

OIL CONSERVATION DIVISION

P.O. Box 2088

Santa Fe, New Mexico 87504-2088

WELL LOCATION AND ACREAGE DEDICATION PLAT

¹ API Number 30 025 32880	² Pool Code 76480	³ Pool Name EUMONT YATES SEVEN RIVERS QUEEN (PRO GAS)
⁴ Property Code 11127	⁵ Property Name L. VAN ETEN	⁶ Well No. 15
⁷ OGRID Number 4323	⁸ Operator Name CHEVRON USA INC	⁹ Elevation 3535' GL

¹⁰ Surface Location

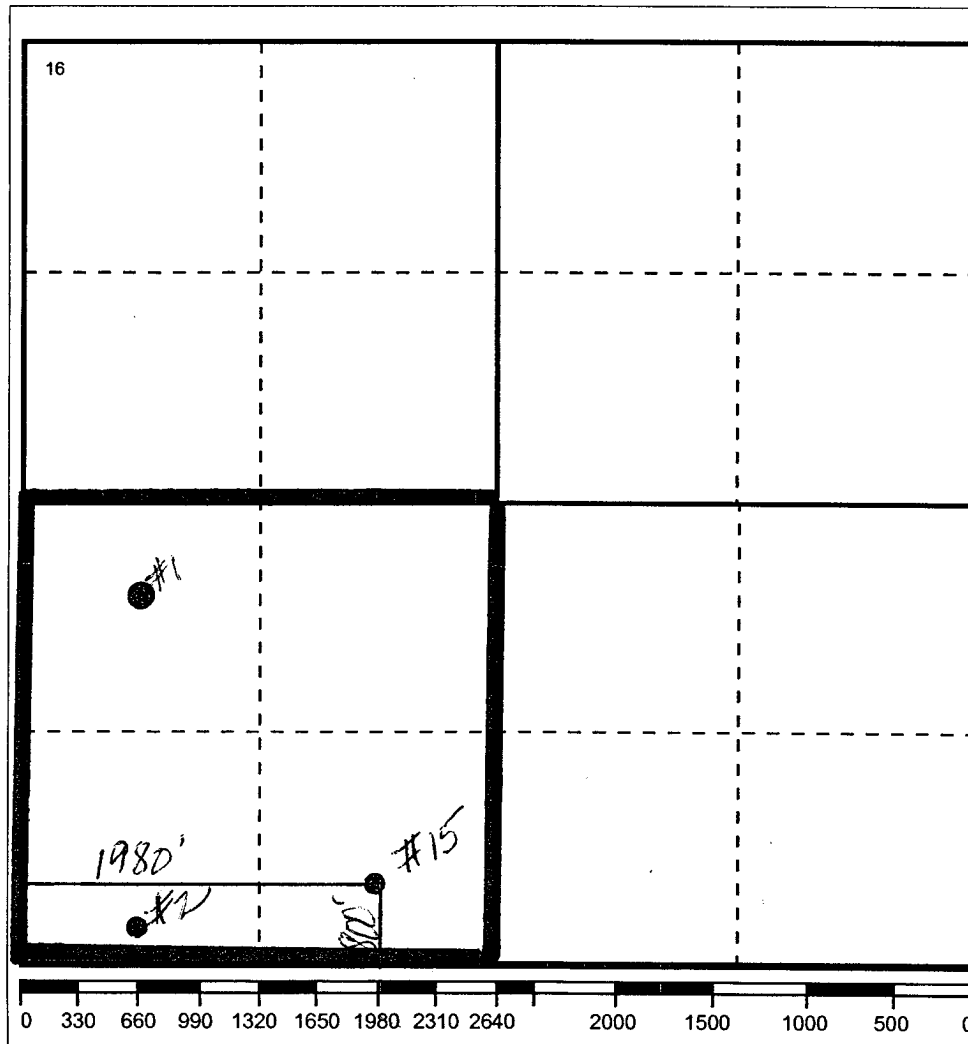
UI or lot no N	Section 9	Township 20-S	Range 37-E	Lot.Idn	Feet From The 800	North/South Line SOUTH	Feet From The 1980	East/West Line WEST	County LEA
-------------------	--------------	------------------	---------------	---------	----------------------	---------------------------	-----------------------	------------------------	---------------

¹¹ Bottom Hole Location If Different From Surface

UI or lot no.	Section	Township	Range	Lot.Idn	Feet From The	North/South Line	Feet From The	East/West Line	County
---------------	---------	----------	-------	---------	---------------	------------------	---------------	----------------	--------

¹² Dedicated Acre 160	¹³ Joint or Infill No	¹⁴ Consolidation Code	¹⁵ Order No. N5P-1435
-------------------------------------	-------------------------------------	----------------------------------	-------------------------------------

NO ALLOWABLE WILL BE ASSIGNED TO THIS COMPLETION UNTIL ALL INTERESTS HAVE BEEN CONSOLIDATED
OR A NON-STANDARD UNIT HAS BEEN APPROVED BY THE DIVISION

¹⁷ OPERATOR CERTIFICATION

I hereby certify that the information contained herein is true and complete to the best of my knowledge and belief

Signature

Printed Name

Denise Leake

Position

Regulatory Specialist

Date

2/16/2004

¹⁸ SURVEYOR CERTIFICATION

I hereby certify that the well location shown on this plat was plotted from field notes of actual surveys made by me or under my supervision, and that the same is true and correct to the best of my knowledge and belief.

Date Surveyed

Signature & Seal of
Professional Surveyor

Certificate No.

DISTRICT I

P.O. Box 1980, Hobbs, NM 88241-1980

DISTRICT II

P.O. Box Drawer DD, Artesia, NM 88211-0719

DISTRICT III

1000 Rio Brazos Rd., Aztec, NM 87410

DISTRICT IV

P.O. Box 2088, Santa Fe, NM 87504-2088

State of New Mexico
Energy, Minerals and Natural Resources Department

OIL CONSERVATION DIVISION

P.O. Box 2088
 Santa Fe, New Mexico 87504-2088

Form C-102

Revised February 10, 1999

Instructions on back

Submit to Appropriate District Office

State Lease - 4 Copies

Fee Lease - 3 Copies

☐ AMENDED REPORT**WELL LOCATION AND ACREAGE DEDICATION PLAT**

¹ API Number 30 025 06042	² Pool Code 76480	³ Pool Name Eumont Yates 7RVS QN (Pro Gas)
⁴ Property Code 11127	⁵ Property Name L VAN ETEN	⁶ Well No. 2
⁷ OGRID Number 4323	⁸ Operator Name CHEVRON USA INC	⁹ Elevation 3537'

¹⁰ Surface Location

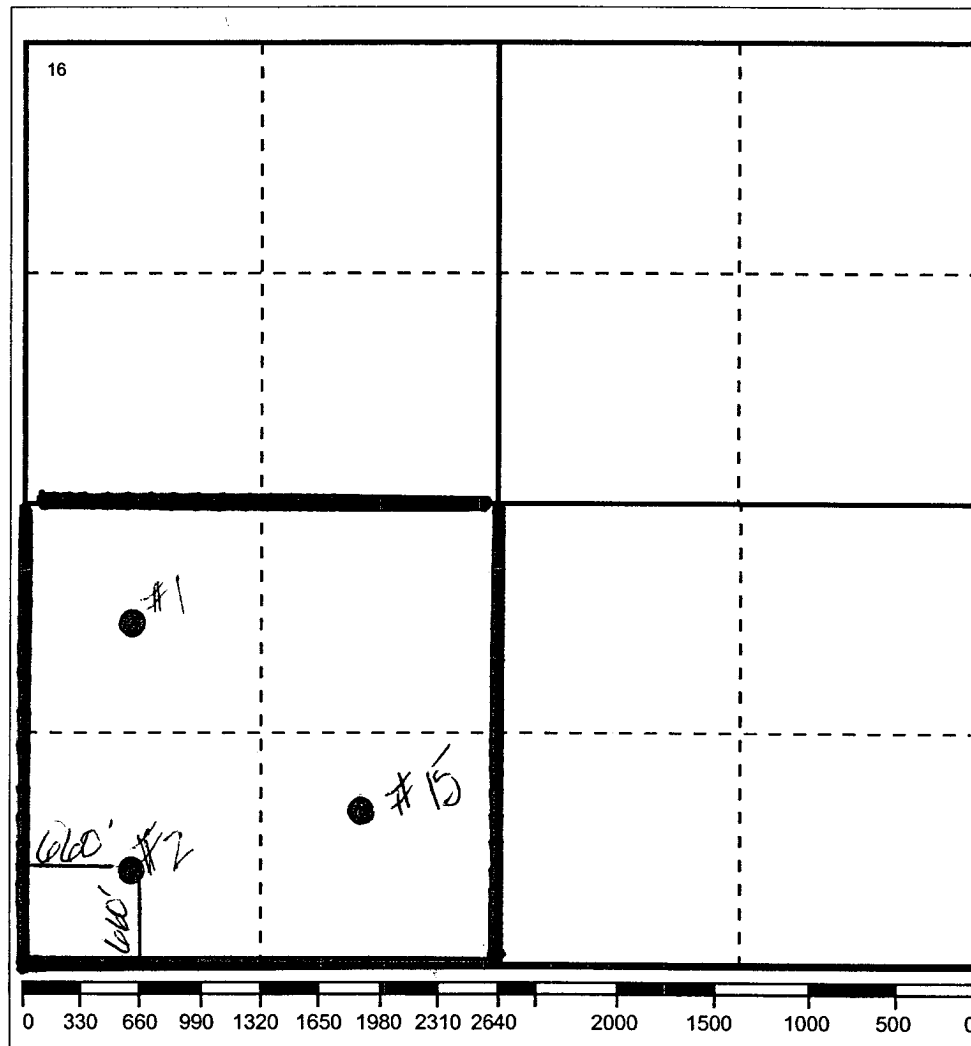
UI or lot no M	Section 9	Township 20S	Range 37E	Lot.Idn	Feet From The 660	North/South Line SOUTH	Feet From The 660	East/West Line WEST	County LEA
-------------------	--------------	-----------------	--------------	---------	----------------------	---------------------------	----------------------	------------------------	---------------

¹¹ Bottom Hole Location If Different From Surface

UI or lot no.	Section	Township	Range	Lot.Idn	Feet From The	North/South Line	Feet From The	East/West Line	County
---------------	---------	----------	-------	---------	---------------	------------------	---------------	----------------	--------

¹² Dedicated Acre 160	¹³ Joint or Infill No	¹⁴ Consolidation Code	¹⁵ Order No. <i>N5P-1435</i>
-------------------------------------	-------------------------------------	----------------------------------	--

NO ALLOWABLE WILL BE ASSIGNED TO THIS COMPLETION UNTIL ALL INTERESTS HAVE BEEN CONSOLIDATED
 OR A NON-STANDARD UNIT HAS BEEN APPROVED BY THE DIVISION

¹⁷ OPERATOR CERTIFICATION

I hereby certify that the information
 contained herein is true and complete to the
 best of my knowledge and belief

Signature

Printed Name

Denise Leake

Position

Regulatory Specialist

Date

2/16/2004

¹⁸ SURVEYOR CERTIFICATION

I hereby certify that the well location shown
 on this plat was plotted from field notes of
 actual surveys made by me or under my
 supervision, and that the same is true and
 correct to the best of my knowledge and
 belief.

Date Surveyed

Signature & Seal of
 Professional Surveyor

Certificate No.