

District I
1625 N. French Dr., Hobbs, NM 88240
District II
1301 W. Grand Avenue, Artesia, NM 88210
District III
1000 Rio Brazos Road, Aztec, NM 87410
District IV
1220 S. St. Francis Dr., Santa Fe, NM 87505

State of New Mexico
Energy Minerals and Natural Resources

Form C-101
Revised June 10, 2003

Oil Conservation Division
1220 South St. Francis Dr.
Santa Fe, NM 87505

Submit to appropriate District Office
State Lease - 6 Copies
Fee Lease - 5 Copies

☐ AMENDED REPORT

APPLICATION FOR PERMIT TO DRILL, RE-ENTER, DEEPEN, PLUGBACK, OR ADD A ZONE

¹ Operator Name and Address Samson Resources Samson Plaza, Two West Second St. Tulsa, OK 74103		² OGRID Number 20165
³ Property Code 33801		³ API Number 30-025-36670
⁵ Property Name Hunger Buster State		⁶ Well No. 1

⁷ Surface Location

UL or lot no.	Section	Township	Range	Lot Idn	Feet from the	North/South line	Feet from the	East/West line	County
L	9	21-S	35-E		1980'	South	800'	west	Lea

⁸ Proposed Bottom Hole Location If Different From Surface

UL or lot no.	Section	Township	Range	Lot Idn	Feet from the	North/South line	Feet from the	East/West line	County

⁹ Proposed Pool 1 Osudo Morrow..(GAS) 82/20	¹⁰ Proposed Pool 2
---	-------------------------------

¹¹ Work Type Code N	¹² Well Type Code G	¹³ Cable/Rotary Rotary	¹⁴ Lease Type Code S	¹⁵ Ground Level Elevation 3623' GL
¹⁶ Multiple N	¹⁷ Proposed Depth 12,600"	¹⁸ Formation Morrow	¹⁹ Contractor Nabors Drilling	²⁰ Spud Date ASAP

²¹ Proposed Casing and Cement Program

Hole Size	Casing Size	Casing weight/foot	Setting Depth	Sacks of Cement	Estimated TOC
17 1/2"	13 3/8"	54.5#	0' - 1,450'	850 sx	Circ. to surface
12 1/4"	9 5/8"	40.0#	0' - 5,550'	1750 sx	Circ. to surface
8 3/4"	7"	26.0#	0' - 10,800'	650 sx	TOC - 5,350'
6 1/4"	4 1/2"	13.5#	0' - 12,600'	490 sx	TOC 10,600'
* Altern. 7 7/8"	5 1/2"	20.0#	0' - 12,600'	820 sx	TOC 8,350'

22 Describe the proposed program. If this application is to DEEPEN or PLUG BACK, give the data on the present productive zone and proposed new productive zone. Describe the blowout prevention program, if any. Use additional sheets if necessary.

Propose to drill to 12,600' to test the Morrow. *Alternative: Will drill 8 3/4" to approx. 11,000' and will test for formation integrity for 12 ppg EMW. If FIT is achieved, will reduce hole to 7 7/8" and drill to TD w/o setting 7" casing, then will run 5 1/2" from surface to T.D.

Minimum Specifications for Pressure Control Equipment:

A 13 5/8" 10M WP Shaffer, Double Gate BOP over single with 13 5/8" 5M Hydril annular preventer will be installed on the 13 5/8" casing. Will test to 3M before drilling out 12 1/4" hole and to 5M before drilling the 8 3/4" and 6 1/4" hole.

H₂S: None expected. None in previously drilled wells in area.

²³ I hereby certify that the information given above is true and complete to the best of my knowledge and belief.		OIL CONSERVATION DIVISION	
Signature: <i>George R. Smith</i>		Approved by: <i>Paul J. Harty</i>	
Printed name: George R. Smith		Title: PETROLEUM ENGINEER	
Title: agent for Samson Resources		Approval Date: APR 13 2004 Expiration Date:	
E-mail Address: grsmith1@prodigy.net			
Date: April 8, 2004	Phone: (505) 623-4940	Conditions of Approval: Attached <input type="checkbox"/>	

DISTRICT I
P.O. Box 1980, Hobbs, NM 88241-1980

State of New Mexico
Energy, Minerals and Natural Resources Department

Form C-102
Revised February 10, 1994
Submit to Appropriate District Office
State Lease - 4 Copies
Fee Lease - 3 Copies

DISTRICT II
P.O. Drawer DD, Artesia, NM 88211-0719

OIL CONSERVATION DIVISION

P.O. Box 2088
Santa Fe, New Mexico 87504-2088

DISTRICT III
1000 Rio Brazos Rd., Aztec, NM 87410

DISTRICT IV
P.O. BOX 2088, SANTA FE, N.M. 87504-2088

WELL LOCATION AND ACREAGE DEDICATION PLAT

☐ AMENDED REPORT

API Number 30-025-36670	Pool Code 82120	Pool Name Osudo Morrow
Property Code 33801	Property Name HUNGER BUSTER STATE	Well Number 1
OGRID No. 20165	Operator Name SAMSON RESOURCES	Elevation 3623'

Surface Location

UL or lot No. L	Section 9	Township 21-S	Range 35-E	Lot Idn	Feet from the 1980	North/South line SOUTH	Feet from the 800	East/West line WEST	County LEA
---------------------------	---------------------	-------------------------	----------------------	---------	------------------------------	----------------------------------	-----------------------------	-------------------------------	----------------------

Bottom Hole Location If Different From Surface

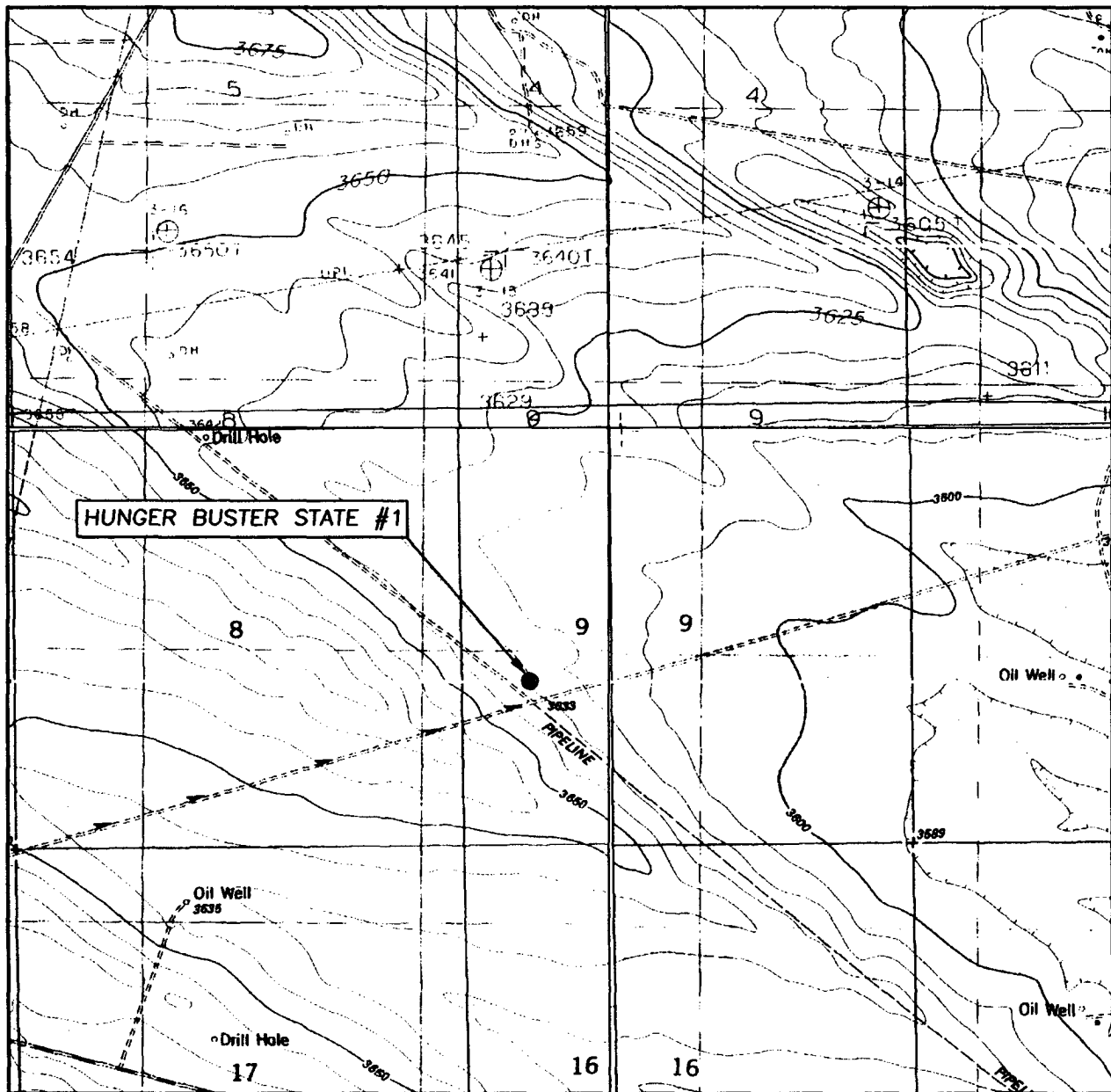
UL or lot No.	Section	Township	Range	Lot Idn	Feet from the	North/South line	Feet from the	East/West line	County
---------------	---------	----------	-------	---------	---------------	------------------	---------------	----------------	--------

Dedicated Acres 320	Joint or Infill	Consolidation Code	Order No.
-------------------------------	-----------------	--------------------	-----------

NO ALLOWABLE WILL BE ASSIGNED TO THIS COMPLETION UNTIL ALL INTERESTS HAVE BEEN CONSOLIDATED
OR A NON-STANDARD UNIT HAS BEEN APPROVED BY THE DIVISION

	OPERATOR CERTIFICATION I hereby certify the the information contained herein is true and complete to the best of my knowledge and belief. Signature George R. Smith Printed Name agent for Samson Resources Title April 8, 2004 Date
	SURVEYOR CERTIFICATION I hereby certify that the well location shown on this plat was plotted from field notes of actual surveys made by me or under my supervision, and that the same is true and correct to the best of my belief. April 05, 2004 Date Surveyed AWB Signature & Seal of Professional Surveyor Certificate No. GARY EDSON 12641

LOCATION VERIFICATION MAP



SCALE: 1" = 2000'

CONTOUR INTERVAL: 10'
SAN SIMON RANCH, N.M.

SEC. 9 TWP. 21-S RGE. 35-E

SURVEY N.M.P.M.

COUNTY LEA

DESCRIPTION 1980' FSL & 800' FWL

ELEVATION 3623'

OPERATOR SAMSON RESOURCES

LEASE HUNGER BUSTER STATE

U.S.G.S. TOPOGRAPHIC MAP
SAN SIMON RANCH, N.M.

JOHN WEST SURVEYING
HOBBS, NEW MEXICO
(505) 393-3117



RIG 715 BOP LAYOUT

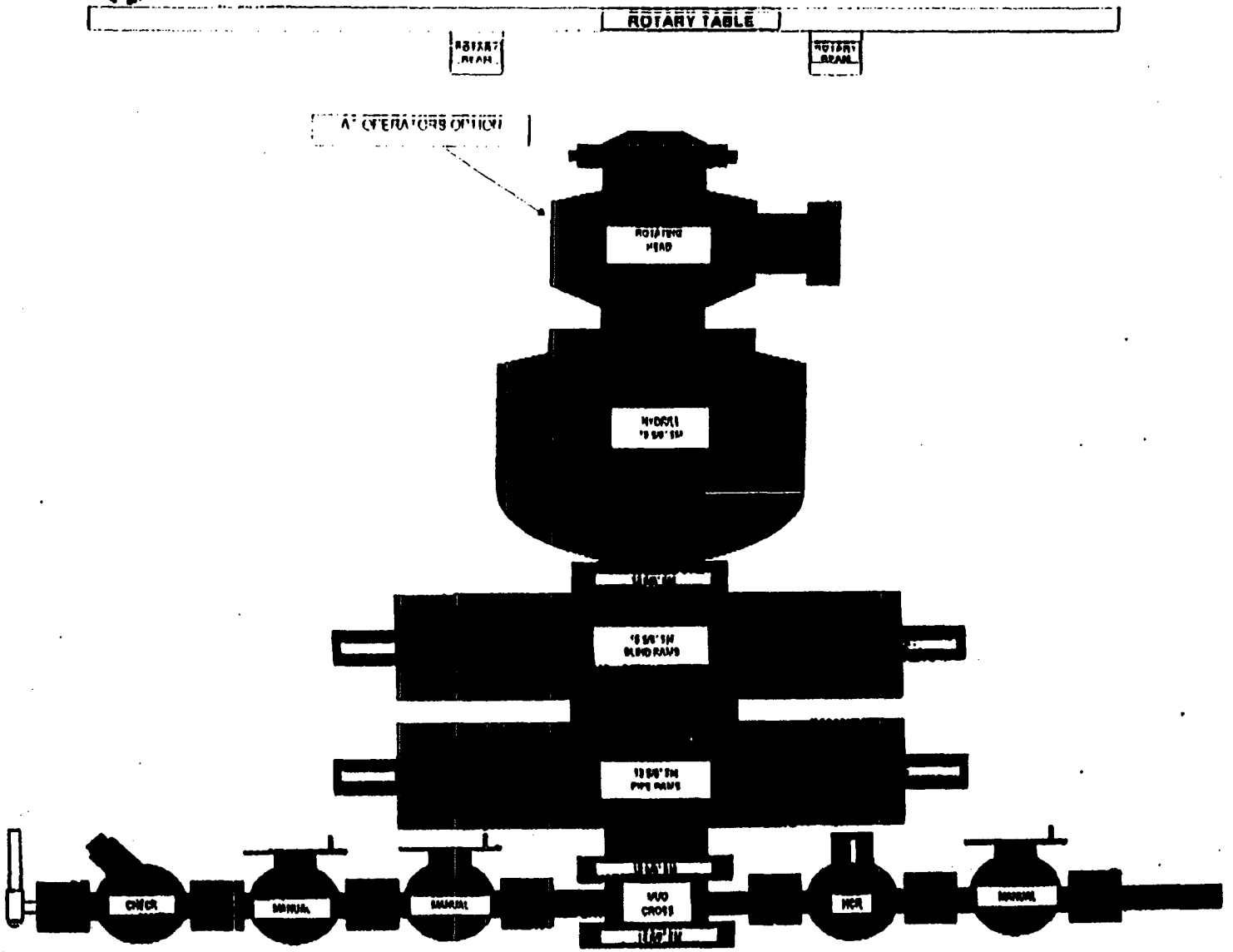


EXHIBIT "A"
 SAMSON RESOURCES
 Dilly Bar State 8, Well No. 1
 BOP Specifications



N/O = NORMALLY OPEN
N/C = NORMALLY CLOSE

