

District I
1625 N. French Dr., Hobbs, NM 88240
District II
1301 W. Grand Avenue, Artesia, NM 88210
District III
1000 Rio Brazos Road, Aztec, NM 87410
District IV
1220 S. St. Francis Dr., Santa Fe, NM 87505

State of New Mexico
Energy Minerals and Natural Resources

Form C-101
March 4, 2004

Oil Conservation Division
1220 South St. Francis Dr.
Santa Fe, NM 87505

Submit to appropriate District Office
State Lease - 6 Copies
Fee Lease - 5 Copies

☐ AMENDED REPORT

APPLICATION FOR PERMIT TO DRILL, RE-ENTER, DEEPEN, PLUGBACK, OR ADD A ZONE

PURE RESOURCES, L.P. Operator Name and Address		OGRID Number 150628	
500 WEST ILLINOIS AVENUE MIDLAND, TEXAS 79701		API Number 30-025-36680	
Property Code 33830	RAPTOR WEST "3" STATE Property Name	Well No. 1	

7 Surface Location

UL or lot no.	Section	Township	Range	Lot Idn	Feet from the	North/South line	Feet from the	East/West line	County
J	3	19S	34E		1650'	South	1650'	East	Lea

8 Proposed Bottom Hole Location If Different From Surface

UL or lot no.	Section	Township	Range	Lot Idn	Feet from the	North/South line	Feet from the	East/West line	County
LA RICA-MORROW EAST (GAS) (79810) Proposed Pool 1					Proposed Pool 2				

Drilling Pit Location and Other Information

UL or lot no.	Section	Township	Range	Lot Idn	Feet from the	North/South line	Feet from the	East/West line	County
J	3	19S	34E		1650'	SOUTH	1650'	EAST	LEA
Depth to ground water 10430' estimate					Distance from nearest fresh water well 1000'±		Distance from nearest surface water BUFFALO WILLOW 2500'		
Work Type Code N		Well Type Code G		Cable/Rotary ROTARY		Lease Type Code S		Ground Level Elevation 3992'	
Multiple NO		Proposed Depth 13,600'		Formation MORROW		Contractor UNKNOWN		Spud Date WHEN APPROVED	

21 Proposed Casing and Cement Program

Hole Size	Casing Size	Casing weight/foot	Setting Depth	Sacks of Cement	Estimated TOC
25"	20"	NA	40'	Redi-mix	Surface
17½"	13 3/8"	48	500'	500 S	Surface
12¼"	9 5/8"	40	5500'	1350 S x.	Surface
7 7/8"	5½"	20	13,600'	735 S	9000'±

22 Describe the proposed program. If this application is to DEEPEN or PLUG BACK, give the data on the present productive zone and proposed new productive zone. Describe the blowout prevention program, if any. Use additional sheets if necessary.

Permit Expires 1 Year From Approval
Date Unless Drilling Underway SEE ATTACHED SHEET.

23 I hereby certify that the information given above is true and complete to the best of my knowledge and belief. I further certify that the drilling pit will be constructed according to NMOC guidelines ☒, a general permit ☐ or an (attached) alternative OCD-approved plan ☐.

Signature:

Printed name: Joe T. Janica

Title: Agent

E-mail Address:

Date: 04/20/04

Phone: 505-391-8503

OIL CONSERVATION DIVISION

Approved by:

Title:

PETROLEUM ENGINEER

Approval Date:

Expiration Date:

APR 26 2004

Conditions of Approval:

Attached ☒

PURE RESOURCES, L.P.
RAPTOR WEST "3" STATE #1
UNIT "J" SECTION 3
T19S-R34E LEA CO. NM

1. Drill 25" hole to 40'. Set 40' of 20" conductor pipe and cement to surface with Redi-mix.
2. Drill 17½" hole to 500'. Run and set 500' of 13 3/8" 48# H-40 ST&C casing. Cement with 265 Sx. of Class "C" cement + 2% bwoc CaCl, + 4% bwoc Bentonite + ¼# Flocele/Sx. Tail in with 200 Sx. of Class "C" cement + 2% bwoc CaCl + ¼# of Flocele/Sx. Circulate cement to surface.
3. Drill 12¼" hole to 5500'. Run and set 5500' of 9 5/8" casing as follows: 1900' of 9 5/8" 40# HCK-55 ST&C, 3600' of 9 5/8" 40# J-55 ST&C. Cement with 1250 Sx. of 35/65 POZ (Fly Ash) Class "C" cement + 6% bwoc Bentonite + .3% bwoc FL-52, + 5% Sodium Chloride, tail in with 100 Sx. of Class "C" neat cement. Circulate cement to surface.
4. Drill 7 7/8" hole to 13,600'. Run and set 13,600' of 5½" casing as follows: 1000' of 5½" 20# P-110 LT&C, 12,600' of 5½" 20# N-80 LT&C . Cement with 735 Sx. of 15/61/11 POZ (Fly Ash) Class "H" cement CSE + .6% bwoc FL-52, + .7% bwoc FL-25, + 3#/Sx. LCM. Estimate top of cement 9000' from surface. Or 500' above the upper most pay interval.

District I
1625 N. French Dr., Hobbs, NM 88240
District II
1301 W. Grand Avenue, Artesia, NM 88210
District III
1000 Rio Brazos Road, Aztec, NM 87410
District IV
1220 S. St. Francis Dr., Santa Fe, NM 87505

State of New Mexico
Energy Minerals and Natural Resources

Form C-144
March 12, 2004

Oil Conservation Division
1220 South St. Francis Dr.
Santa Fe, NM 87505

For drilling and production facilities, submit to
appropriate NMOCD District Office.
For downstream facilities, submit to Santa Fe
office

Pit or Below-Grade Tank Registration or Closure

Is pit or below-grade tank covered by a "general plan"? Yes ☒ No ☐

Type of action: Registration of a pit or below-grade tank ☐ Closure of a pit or below-grade tank ☐

Operator: PURE RESOURCES, L.P. Telephone: 432-498-2655 e-mail address: _____
Address: 500 WEST ILLINOIS AVENUE MIDLAND, TEXAS 79702
Facility or well name: RAPTOR WEST "3" STATE # 3002536680 U/L or Qtr/Qtr J Sec 3 T 19S R 34E
County: LEA Latitude 32°41'29"W Longitude 103°32'40"W NAD: 1927 ☐ 1983 ☐ Surface Owner Federal ☐ State ☒ Private ☐ Indian ☐

Pit

Type: Drilling ☒ Production ☐ Disposal ☐

Workover ☐ Emergency ☐

Lined ☒ Unlined ☐

Liner type: Synthetic ☐ Thickness 8 mil Clay ☐ Volume
1500 bbl

Below-grade tank

Volume: _____ bbl Type of fluid: _____

Construction material: _____

Double-walled, with leak detection? Yes ☐ If not, explain why not.

Depth to ground water (vertical distance from bottom of pit to seasonal high
water elevation of ground water.)

104' from surface

Less than 50 feet

50 feet or more, but less than 100 feet

100 feet or more

(20 points)

(10 points)

(0 points)

10

Wellhead protection area: (Less than 200 feet from a private domestic
water source, or less than 1000 feet from all other water sources.)

Yes

No X

(20 points)

(0 points)

0

Distance to surface water: (horizontal distance to all wetlands, playas,
irrigation canals, ditches, and perennial and ephemeral watercourses.)

Less than 200 feet

200 feet or more, but less than 1000 feet

1000 feet or more X

(20 points)

(10 points)

(0 points)

10

Ranking Score (Total Points)

20

If this is a pit closure: (1) attach a diagram of the facility showing the pit's relationship to other equipment and tanks. (2) Indicate disposal location:

onsite ☐ offsite ☐ If offsite, name of facility _____ (3) Attach a general description of remedial action taken including remediation start date and end

date. (4) Groundwater encountered: No ☐ Yes ☐ If yes, show depth below ground surface _____ ft. and attach sample results. (5) Attach soil sample results and a

diagram of sample locations and excavations.

I hereby certify that the information above is true and complete to the best of my knowledge and belief. I further certify that the above-described pit or below-grade tank has
been/will be constructed or closed according to NMOCD guidelines ☒ a general permit ☐ or an (attached) alternative OCD-approved plan ☐.

Date: 04/23/04

Printed Name/Title: Joe T Janica Agent

Signature: Joe T Janica

Your certification and NMOCD approval of this application/closure does not relieve the operator of liability should the contents of the pit or tank contaminate ground water or
otherwise endanger public health or the environment. Nor does it relieve the operator of its responsibility for compliance with any other federal, state, or local laws and/or
regulations.

Approval:

Date: 4/23/04

Printed Name/Title: Paul F Rautz

Signature: Paul F Rautz

DISTRICT I

P.O. Box 1980, Hobbs, NM 88241-1980

DISTRICT II

P.O. Drawer DD, Artesia, NM 88211-0719

DISTRICT III

1000 Rio Brazos Rd., Aztec, NM 87410

DISTRICT IV

P.O. BOX 2088, SANTA FE, N.M. 87504-2088

State of New Mexico

Energy, Minerals and Natural Resources Department

Form C-102

Revised February 10, 1994

Submit to Appropriate District Office

State Lease - 4 Copies

Fee Lease - 3 Copies

OIL CONSERVATION DIVISION

P.O. Box 2088

Santa Fe, New Mexico 87504-2088

WELL LOCATION AND ACREAGE DEDICATION PLAT

☐ AMENDED REPORT

API Number 30-025-36680	Pool Code 79810	Pool Name LA RICA-MORROW, EAST (GAS)
Property Code 33830	Property Name RAPTOR WEST "3" STATE	Well Number 1
OGRID No. 150628	Operator Name PURE RESOURCES, L.P.	Elevation 3992'

Surface Location

UL or lot No.	Section	Township	Range	Lot Idn	Feet from the	North/South line	Feet from the	East/West line	County
J	3	19-S	34-E		1650	SOUTH	1650	EAST	LEA

Bottom Hole Location If Different From Surface

UL or lot No.	Section	Township	Range	Lot Idn	Feet from the	North/South line	Feet from the	East/West line	County

Dedicated Acres	Joint or Infill	Consolidation Code	Order No.
320			

NO ALLOWABLE WILL BE ASSIGNED TO THIS COMPLETION UNTIL ALL INTERESTS HAVE BEEN CONSOLIDATED
OR A NON-STANDARD UNIT HAS BEEN APPROVED BY THE DIVISION

LOT 4	LOT 3	LOT 2	LOT 1
44.32 AC	44.28 AC	44.24 AC	44.20 AC
<p>GEODETIC COORDINATE</p> <p>NAD 27 NME</p> <p>Y = 614351.2 N</p> <p>X = 742717.0 E</p> <p>LAT. = 32°41'11.29"N</p> <p>LONG. = 103°32'39.98"W</p>			
<p>1650'</p> <p>1650'</p>			

OPERATOR CERTIFICATION

I hereby certify the the information contained herein is true and complete to the best of my knowledge and belief.

Joe T. Janica
Signature

Joe T. Janica
Printed Name

Agent
Title

04/19/04
Date

SURVEYOR CERTIFICATION

I hereby certify that the well location shown on this plat was plotted from field notes of actual surveys made by me or under my supervision, and that the same is true and correct to the best of my belief.

April 15, 2004

Date Surveyed _____ AWB

Signature & Seal of Professional Surveyor

Gary E. Elson 4/14/04

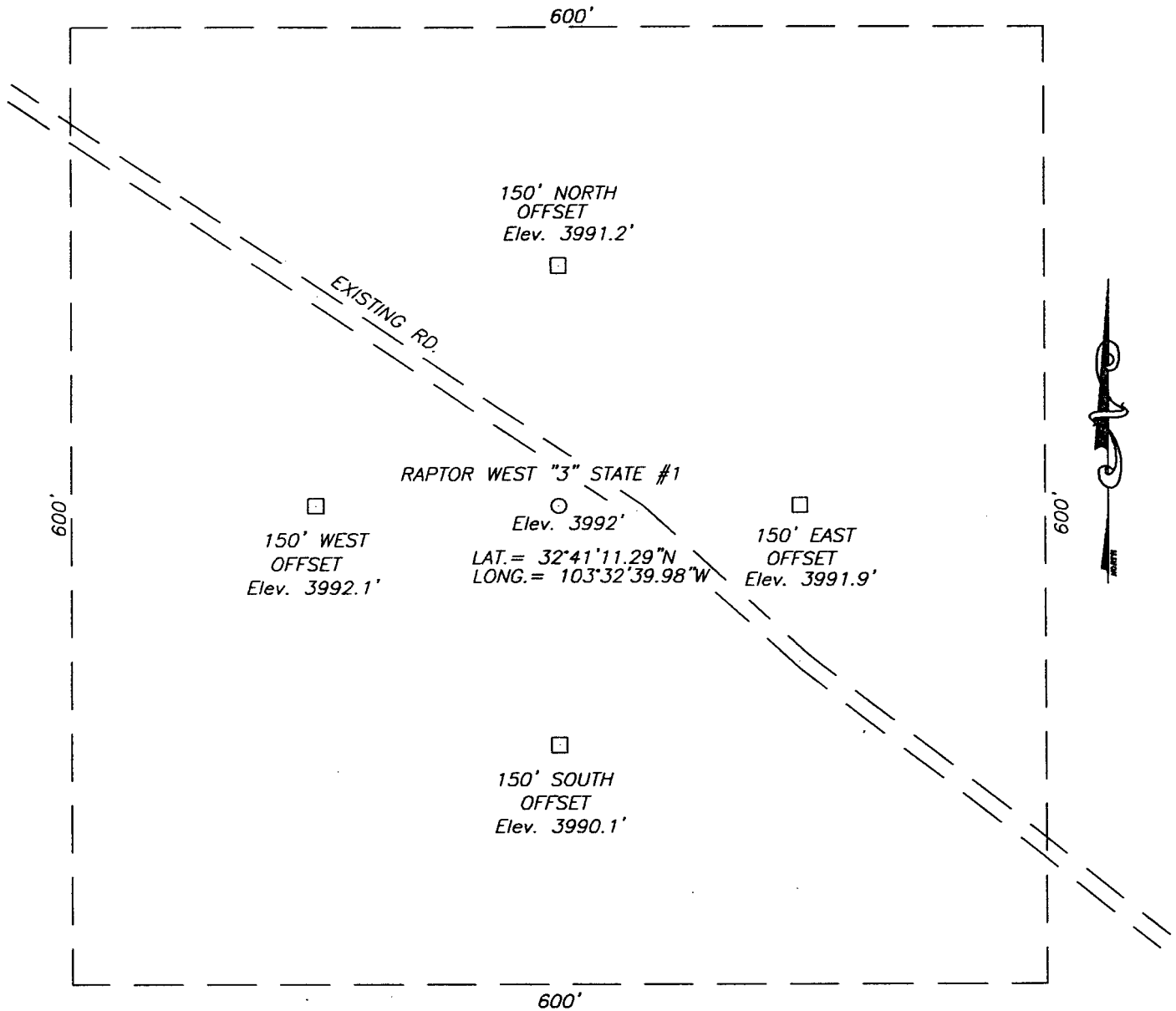
07.11.0436

Certificate No. GARY ELSON 12641

SECTION 3, TOWNSHIP 19 SOUTH, RANGE 34 EAST, N.M.P.M.,

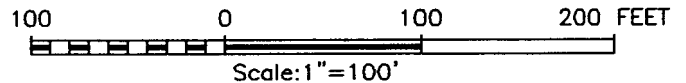
LEA COUNTY,

NEW MEXICO.



DIRECTIONS TO LOCATION:

GOING NORTHWEST ON STATE HWY #529 TURN LEFT (SOUTH) AT MILE MARKER #20.7. GO SOUTH ON CALICHE RD. 2.1 MILES. TURN LEFT ON TWO TRACK RD. AND GO EAST 0.4 MILES TURN RIGHT ON TWO TRACK RD. AND GO SOUTHEAST FOR 400'. PROPOSED LOCATION IS 20' OFF TWO TRACK RD. TO THE WEST.



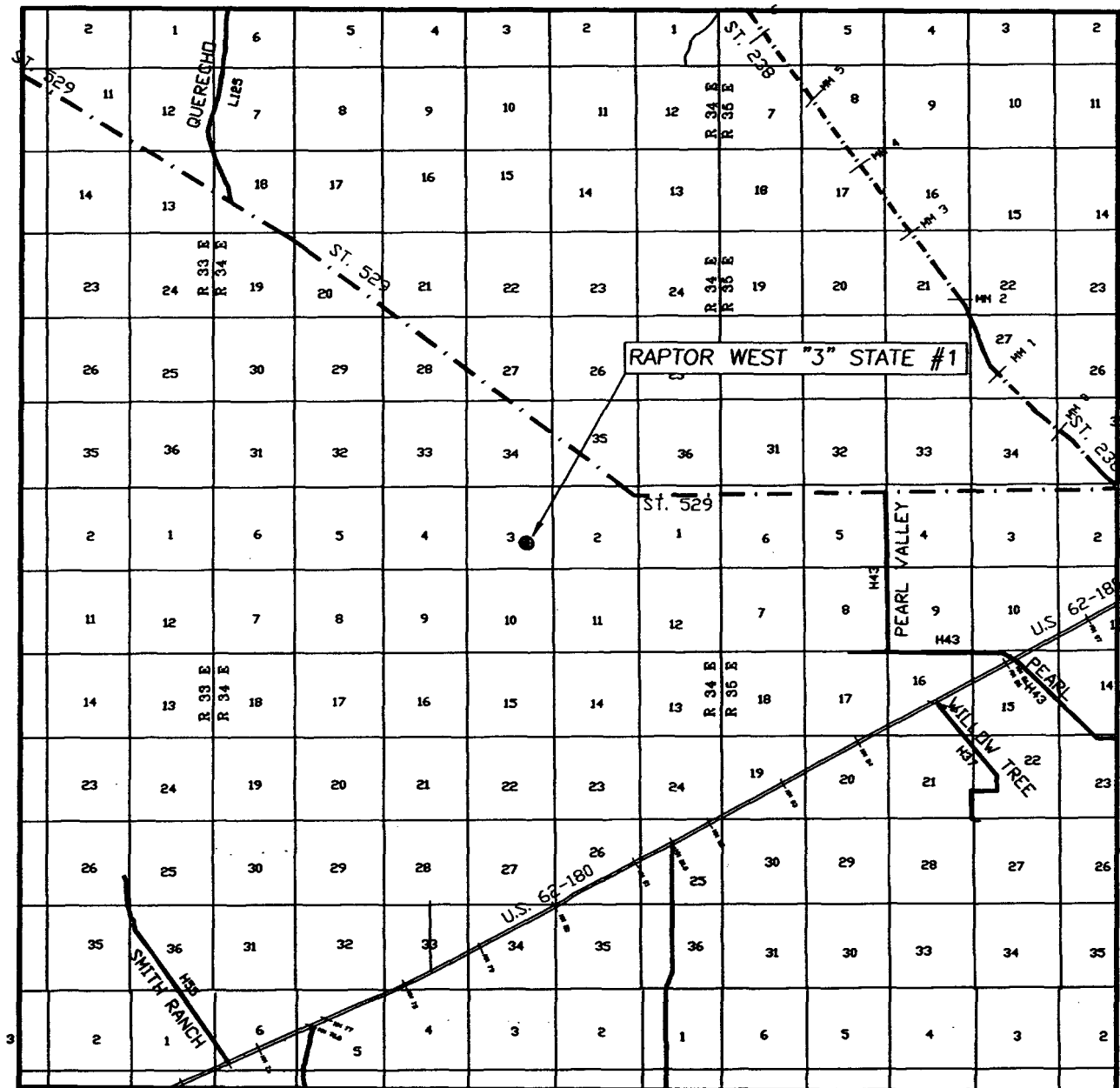
PROVIDING SURVEYING SERVICES
SINCE 1948
JOHN WEST SURVEYING COMPANY
412 N. DAL PASO
HOBBS, N.M. 88240
(505) 393-3117

PURE RESOURCES, L.P.

THE RAPTOR WEST "3" STATE #1 LOCATED
1650' FROM THE SOUTH LINE AND 1650' FROM THE EAST LINE
OF SECTION 3, TOWNSHIP 19 SOUTH, RANGE 34 EAST,
LEA COUNTY, NEW MEXICO

Survey Date: 04/15/04	Sheet 1 of 1 Sheets
W.O. Number: 04.11.0436	DRAWN BY: A.W.B
Date: 04/16/04	DISK: CD#10
04.11.036	Scale: 1"=100'

VICINITY MAP

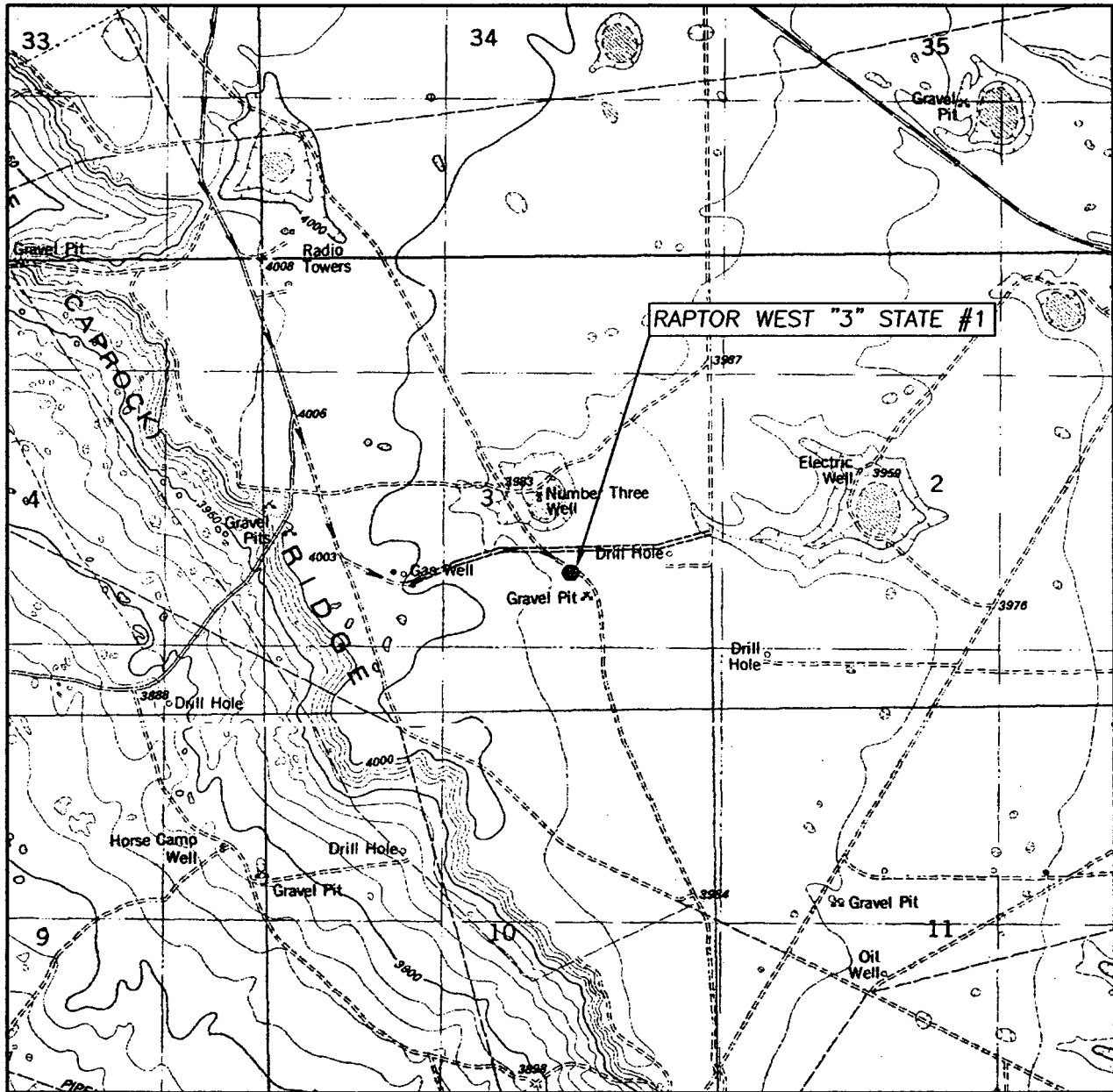


SCALE: 1" = 2 MILES

SEC. 3 TWP. 19-S RGE. 34-E
 SURVEY N.M.P.M.
 COUNTY LEA
 DESCRIPTION 1650' FSL & 1650' FEL
 ELEVATION 3992'
 OPERATOR PURE RESOURCES, L.P.
 LEASE RAPTOR WEST "3" STATE

JOHN WEST SURVEYING
 HOBBS, NEW MEXICO
 (505) 393-3117

LOCATION VERIFICATION MAP



SCALE: 1" = 2000'

CONTOUR INTERVAL: 20'
IRONHOUSE WELL, N.M.

SEC. 3 TWP. 19-S RGE. 34-E

SURVEY N.M.P.M.

COUNTY LEA

DESCRIPTION 1650' FSL & 1650' FEL

ELEVATION 3992'

OPERATOR PURE RESOURCES, L.P.

LEASE RAPTOR WEST "3" STATE

U.S.G.S. TOPOGRAPHIC MAP
IRONHOUSE WELL, N.M.

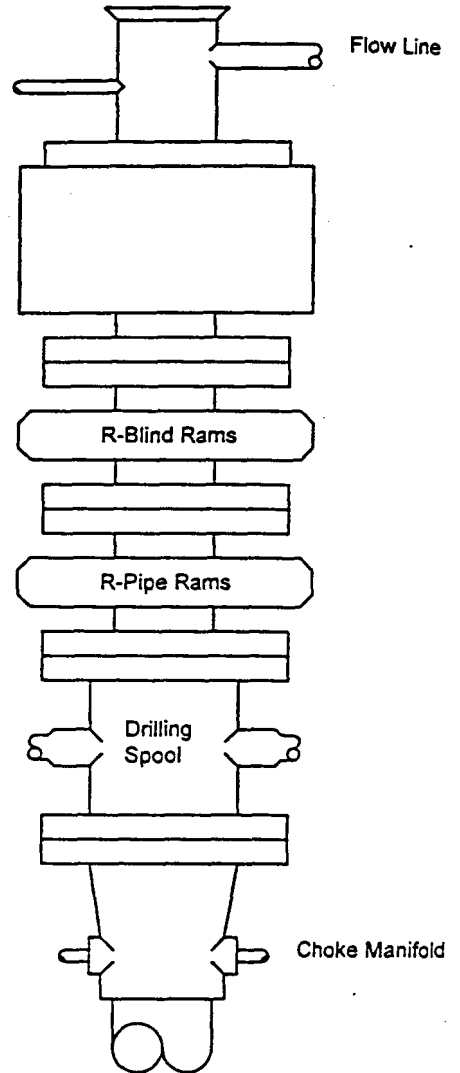
JOHN WEST SURVEYING
HOBBS, NEW MEXICO
(505) 393-3117

BLOWOUT PREVENTER SYSTEM

5000 PSI

Fill Line

Flow Line



TYPE 1500 SERIES
5000 psi WP

Choke Manifold Assembly for 5M WP System

To Pit and/or
Mud/Gas Separator

Adjustable
Choke

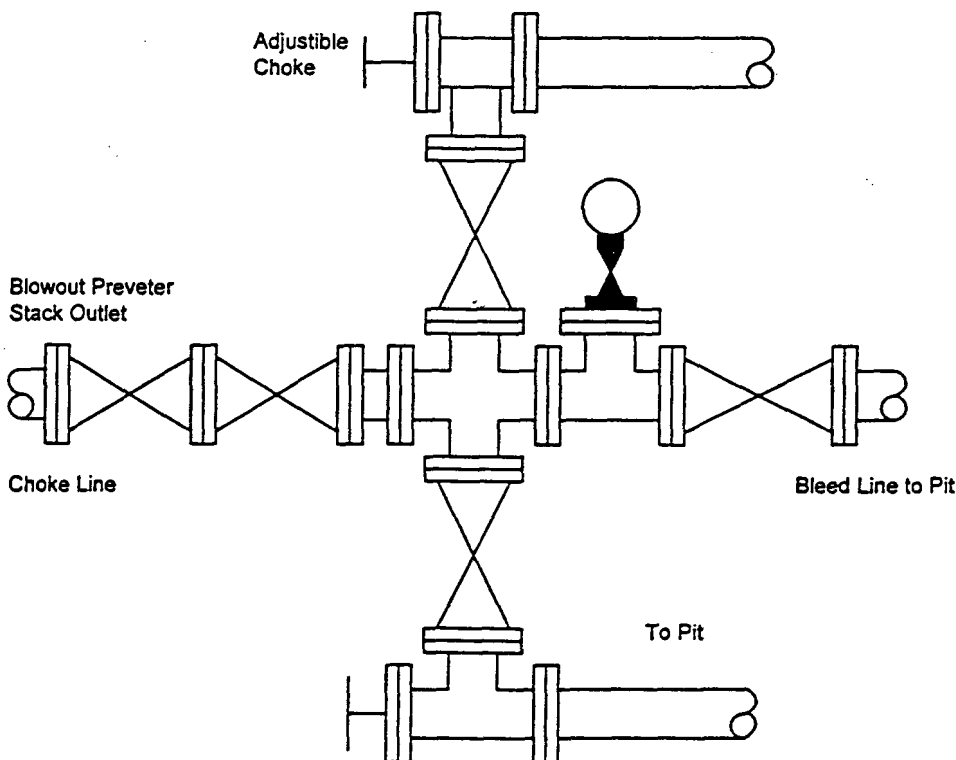
Blowout Preveter
Stack Outlet

Choke Line

Bleed Line to Pit

To Pit

Adjustable Choke



C-101/C-144 DRILLING PIT REGISTRATION CODITIONS OF APPROVAL

API number:	30-025-36680		
OGRID:		Operator:	PURE RESOURCES LP
			500 WEST ILLINOIS AVE
			MIDLAND TX 79701
		Property:	RAPTOR WEST 3 STATE # 1

surface	ULSTR:	J	3	T 19S	R 34E
			1650	FSL	1650 FEL

XXXXXXX	Pit must be lined with a minimum of a 12 mil re-enforced or 20 mil re-enforced liner.
XXXXXXX	The pit must be deep enough so that when pit is closed it can be covered with 3 feet of dirt and surface leveled
	If the pit is to be encapsulated in place, the liner is to be a minimum thickness of 20 mil re-enforced liner
XXXXXXX	When using a 12 mil nylon re-enforced liner. The contents of the pit must be removed along with the liner and disposed of in an approved facility within 6 months of completion of the well.
	When using a 20 mil liner. The pit must be closed within 6 months of completion of the well.
XXXXXXX	This site has a Ranking Score of 20 points or higher . The contents of the pit must be removed along with the liner and disposed of in an approved facility within 6 months of completion of the well.
XXXXXXX	Before pit is closed, submit a subsequent Form C-144 along with any additional information which may be applicable to the appropriate NMOCD District Office for approval.
XXXXXXX	Notify appropriate NMOCD District Office by E-mail 48 hrs prior to closing pit.
XXXXXXX	The operator is required to comply with NMOCD guidelines.
XXXXXXX	OCD approval does not release the operator of its responsibilities for compliance with any other federal, state, or local laws and/or regulations.

Drilling Pit Registration Approval

District Supervisor Chris Williams
District Geologist Paul F Kautz

505-393-6161
ext 102
ext 104

Drilling Pit closure

Environmental Spec Larry Johnson
Environmental Spec Paul Sheeley

505-393-6161
ext 111 lwjohnson@state.nm.us
ext 113 psheeley@state.nm.us

