

NEW MEXICO OIL CONSERVATION COMMISSION
 WELL LOCATION AND ACREAGE DEDICATION PLAT

Form C-102
 Supersedes C-128
 Effective 1-1-65

All distances must be from the outer boundaries of the Section.

Operator Marathon Oil Co.		Lease Lou Worthan		Well No. 18
Unit Letter H	Section 11	Township 22 South	Range 37 East	County Lea
Actual Footage Location of Well: 1905 feet from the North line and 860 feet from the East line				
Ground Level Elev. 3353.0	Producing Formation Granite Wash	Pool Wantz Granite Wash	Dedicated Acreage: 40 Acres	

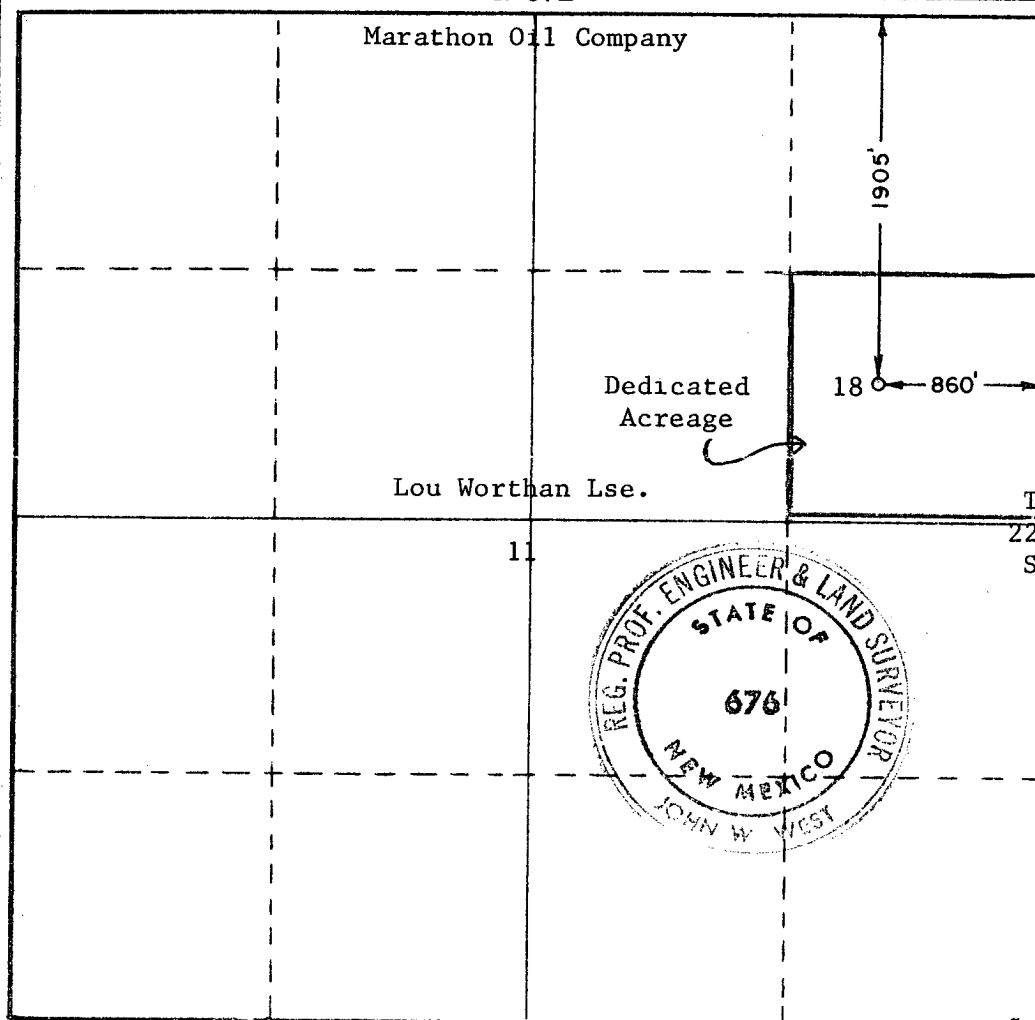
1. Outline the acreage dedicated to the subject well by colored pencil or hachure marks on the plat below.
2. If more than one lease is dedicated to the well, outline each and identify the ownership thereof (both as to working interest and royalty).
3. If more than one lease of different ownership is dedicated to the well, have the interests of all owners been consolidated by communitization, unitization, force-pooling, etc?

☐ Yes ☐ No If answer is "yes," type of consolidation _____

If answer is "no," list the owners and tract descriptions which have actually been consolidated. (Use reverse side of this form if necessary.) _____

No allowable will be assigned to the well until all interests have been consolidated (by communitization, unitization, forced-pooling, or otherwise) or until a non-standard unit, eliminating such interests, has been approved by the Commission.

R-37E



CERTIFICATION

I hereby certify that the information contained herein is true and complete to the best of my knowledge and belief.

Name William R. Huck
 Position Production Engineer
 Company Marathon Oil Company
 Date December 21, 1978

I hereby certify that the well location shown on this plat was plotted from field notes of actual surveys made by me or under my supervision, and that the same is true and correct to the best of my knowledge and belief.

Date Surveyed June 4, 1977
 Registered Professional Engineer and/or Land Surveyor

John W. West
 Certificate No. 676

