

District I
1625 N. French Dr., Hobbs, NM 88240
District II
1301 W. Grand Avenue, Artesia, NM 88210
District III
1000 Rio Brazos Road, Aztec, NM 87410
District IV
1220 S. St. Francis Dr., Santa Fe, NM 87505

State of New Mexico
Energy Minerals and Natural Resources

Form C-101
March 4, 2004

Oil Conservation Division
1220 South St. Francis Dr.
Santa Fe, NM 87505

Submit to appropriate District Office
State Lease - 6 Copies
Fee Lease - 5 Copies

☐ AMENDED REPORT

APPLICATION FOR PERMIT TO DRILL, RE-ENTER, DEEPEN, PLUGBACK, OR ADD A ZONE

Operator Name and Address POGO PRODUCING COMPANY (RICHARD WRIGHT 432-685-8140) P.O. BOX 10340 MIDLAND, TEXAS 79702-7340		OGRID Number 17891
Property Code 3399D	Property Name TRIPLE "X" STATE (3D)	API Number 30-025-36702
		Well No. 1

Surface Location									
UL or lot no.	Section	Township	Range	Lot Idn	Feet from the	North/South line	Feet from the	East/West line	County
N	31	23S	33E		450'	SOUTH	1650'	WEST	LEA

Proposed Bottom Hole Location If Different From Surface									
UL or lot no.	Section	Township	Range	Lot Idn	Feet from the	North/South line	Feet from the	East/West line	County
Proposed Pool 1 BRINNINSTOOL DELAWARE (96193)					Proposed Pool 2				

Drilling Pit Location and Other Information									
UL or lot no.	Section	Township	Range	Lot Idn	Feet from the	North/South line	Feet from the	East/West line	County
N	31	23S	33E		450'	SOUTH	1650'	WEST	LEA
Depth to ground water 400'				Distance from nearest fresh water well 2.5 miles			Distance from nearest surface water 2.5 miles (BELL LAKE)		
Work Type Code N		Well Type Code O		Cable/Rotary ROTARY		Lease Type Code S		Ground Level Elevation 3646'	
Multiple NO		Proposed Depth 5300'		Formation DELAWARE		Contractor UNKNOWN		Spud Date WHEN APPROVED	

Proposed Casing and Cement Program					
Hole Size	Casing Size	Casing weight/foot	Setting Depth	Sacks of Cement	Estimated TOC
25"	20"	NA	40'	Redi-mix	SURFACE
12 1/4"	8 5/8"	24#	850'	650 Sx.	SURFACE
7 7/8"	4 1/2"	11.6#	5300'	1000 Sx.	EST TOC 500' FS

22 Describe the proposed program. If this application is to DEEPEN or PLUG BACK, give the data on the present productive zone and proposed new productive zone. Describe the blowout prevention program, if any. Use additional sheets if necessary.

Permit Expires 1 Year From Approval
Date Unless Drilling Underway SEE ATTACHED SHEET

23 I hereby certify that the information given above is true and complete to the best of my knowledge and belief. I further certify that the drilling pit will be constructed according to NMOCD guidelines ☐ a general permit ☐ or an (attached) alternative OCD-approved plan ☐.

Signature:

Printed name: Joe T. Janica

Title: Agent

E-mail Address:

Date: 05/15/04

Phone: 505-391-8503

OIL CONSERVATION DIVISION

Approved by:

Paul J. Kautz

Title:

PETROLEUM ENGINEER

Approval Date:

MAY 17 2004

Expiration Date:

Conditions of Approval:

Attached ☐

POGO PRODUCING COMPANY
TRIPLE "X" STATE 31 #11
UNIT "N" SECTION 31
T23S-R33E LEA CO. NM

1. Drill 25" hole to 40'. Set 40' of 20" conductor pipe and cement to surface with Redi-mix.
2. Drill 12 $\frac{1}{4}$ " hole to 850'. Run and set 850' of 8 5/8" 24# J-55 ST&C casing. Cement with 650 Sx. of Class "C" cement + 2% CaCl, + $\frac{1}{4}$ # Flocele/Sx. circulate cement to surface.
3. Drill 7 7/8" hole to 5300'. Run and set 5300' of 4 $\frac{1}{2}$ " 11.6# J-55 LT&C casing. Cement with 1000 Sx. of Class "C" cement + additives, estimate top of cement 500' from surface.

C-101/C-144 DRILLING PIT REGISTRATION CODITIONS OF APPROVAL

API number:	30-025-36702		
OGRID:		Operator:	POGO PRODUCING CO
			PO BOX 10340
			MIDLAND TX 79701
		Property:	TRIPLE X 31 STATE # 1

surface	ULSTR:	N	31	T	23S	R	33E
			450	FSL	1650	FWL	

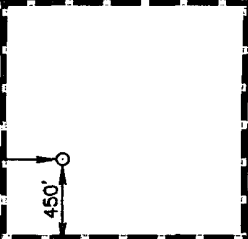
XXXXXX	Pit must be lined with a minimum of a 12 mil re-enforced or 20 mil re-enforced liner.
XXXXXX	The pit must be deep enough so that when pit is closed it can be covered with 3 feet of dirt and surface leveled
	If the pit is to be encapsulated in place, the liner is to be a minimum thickness of 20 mil re-enforced liner
XXXXXX	When using a 12 mil nylon re-enforced liner. The contents of the pit must be removed along with the liner and disposed of in an approved facility within 6 months of completion of the well.
	When using a 20 mil liner. The pit must be closed within 6 months of completion of the well.
	This site has a Ranking Score of 20 points or higher. The contents of the pit must be removed along with the liner and disposed of in an approved facility within 6 months of completion of the well.
XXXXXX	Before pit is closed, submit a subsequent Form C-144 along with any additional information which may be applicable to the appropriate NMOCD District Office for approval.
XXXXXX	Notify appropriate NMOCD District Office by E-mail 48 hrs prior to closing pit.
XXXXXX	The operator is required to comply with NMOCD guidelines.
XXXXXX	OCD approval does not release the operator of its responsibilities for compliance with any other federal, state, or local laws and/or regulations.

Drilling Pit Registration Approval
District Supervisor Chris Williams
District Geologist Paul F Kautz

505-393-6161
ext 102
ext 104

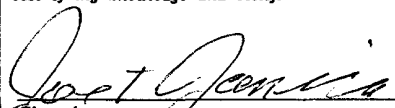
Drilling Pit closure
Environmental Spec Larry Johnson
Environmental Spec Paul Sheeley

505-393-6161
ext 111 lwjohnson@state.nm.us
ext 113 psheeley@state.nm.us

LOT 1		
37.99 AC LOT 2		
38.06 AC LOT 3	<p>GEODETIC COORDINATE NAD 27 NME</p> <p>Y=457263.2 N X=722386.4 E</p> <p>LAT.=32°15'18.31" N LONG.=103°36'50.24" W</p>	
38.12 AC LOT 4		
38.19 AC		

OPERATOR CERTIFICATION

I hereby certify the the information contained herein is true and complete to the best of my knowledge and belief.



Signature

Joe T. Janica

Printed Name

Agent

Title

Date 05/15/04

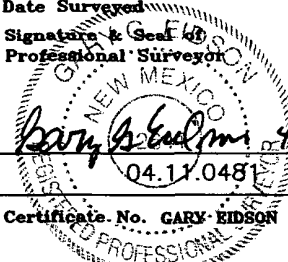
SURVEYOR CERTIFICATION

I hereby certify that the well location shown on this plat was plotted from field notes of actual surveys made by me or under my supervision, and that the same is true and correct to the best of my belief.

APRIL 26, 2004

Date Surveyed

Signature & Seal of Professional Surveyor



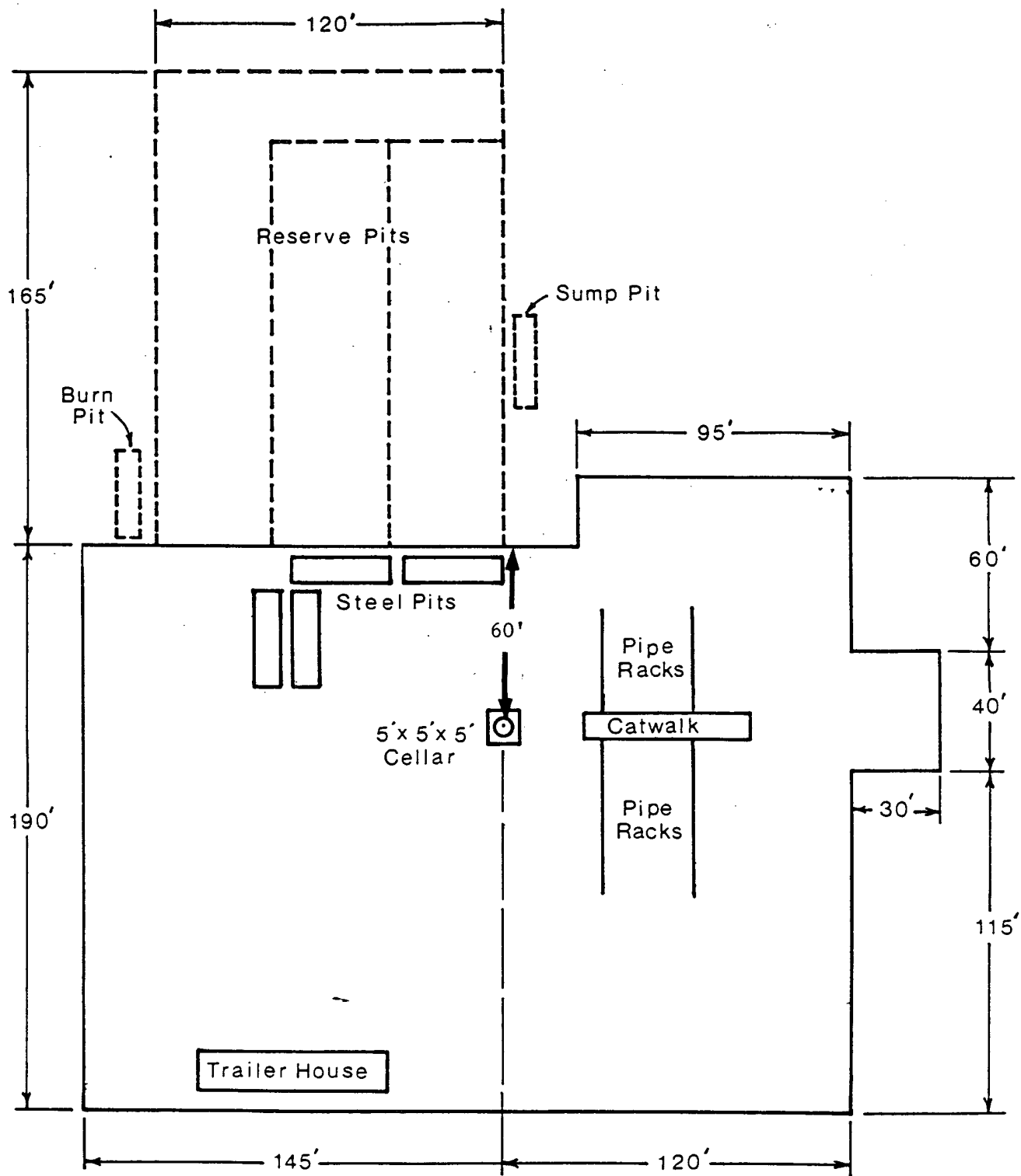
LA

4/30/04

04.11.0481

Certificate No. GARY EIDSON

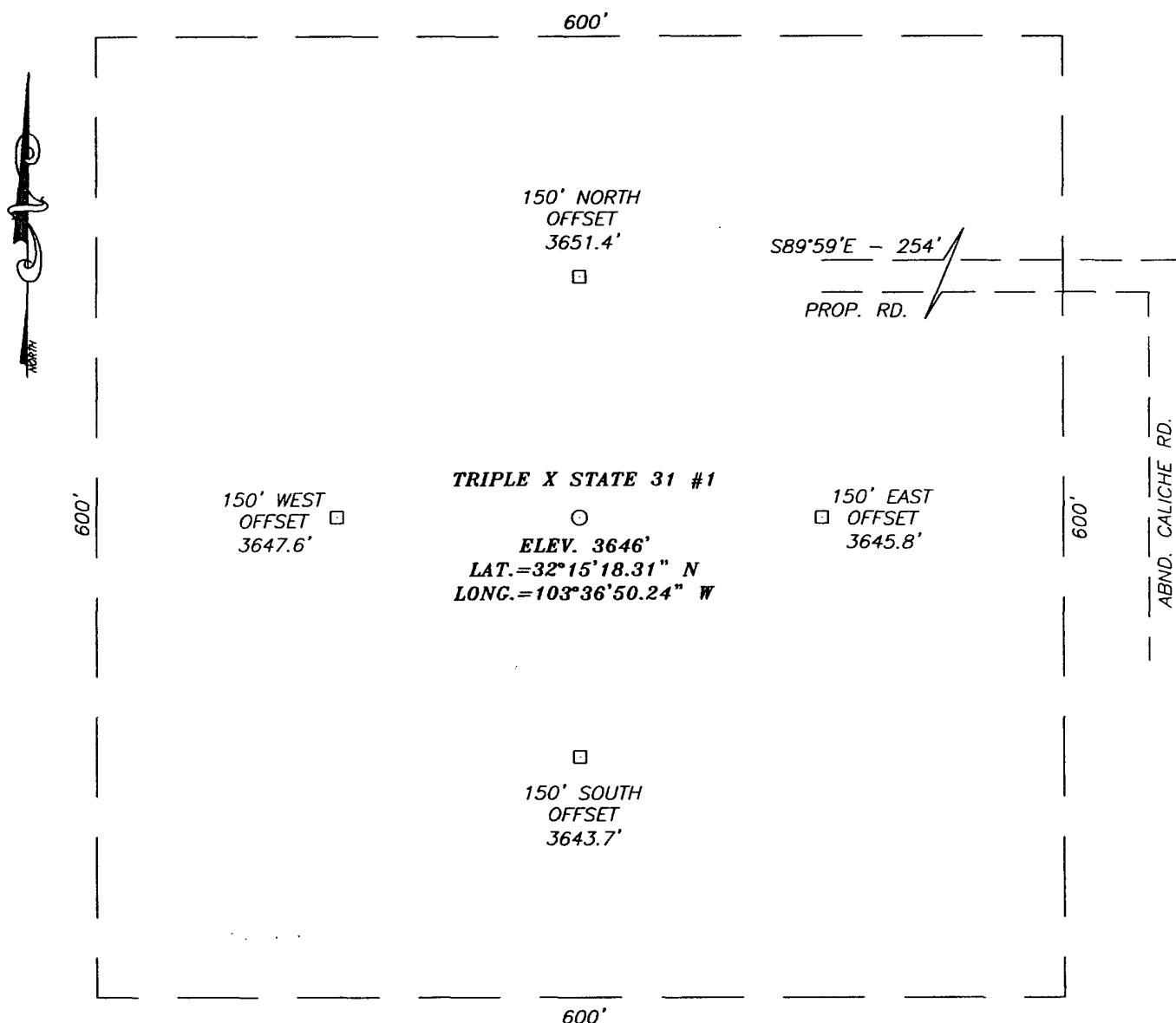
12641



SECTION 31, TOWNSHIP 23 SOUTH, RANGE 33 EAST, N.M.P.M.,

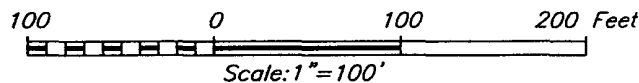
LEA COUNTY,

NEW MEXICO



DIRECTIONS TO LOCATION

GOING WEST ON ST. HWY. #128 TURN NORTH AT CATTLE GUARD JUST PAST MP 27. GO IN A NORTHWEST DIRECTION ON CALICHE ROAD FOR 2.9 MILES. TURN NORTH FOR 0.4 MILES. TURN RIGHT (EAST) ON A TWO TRACK ROAD FOR 0.3 MILES TO THE PROPOSED TRIPLE X STATE 6 #1. CONTINUE EAST 0.1 MILES AND NORTH 0.2 MILES ON ABND. CALICHE ROAD TO THIS LOCATION WHICH IS APPROX. 400' WEST.



PROVIDING SURVEYING SERVICES
SINCE 1946
JOHN WEST SURVEYING COMPANY
412 N. DAL PASO
HOBBS, N.M. 88240
(505) 393-3117

POGO PRODUCING COMPANY

TRIPLE X STATE 31 #1 WELL
LOCATED 450 FEET FROM THE SOUTH LINE
AND 1650 FEET FROM THE WEST LINE OF SECTION 31,
TOWNSHIP 23 SOUTH, RANGE 33 EAST, N.M.P.M.,
LEA COUNTY, NEW MEXICO.

Survey Date: 4/26/04	Sheet 1 of 1 Sheets
W.O. Number: 04.11.0481	Dr. By: LA
Date: 4/29/04	Disk: CD#3
04110481	Scale: 1"=100'

VICINITY MAP



SCALE: 1" = 2 MILES

SEC. 31 TWP. 23-S RGE. 33-E

SURVEY N.M.P.M.

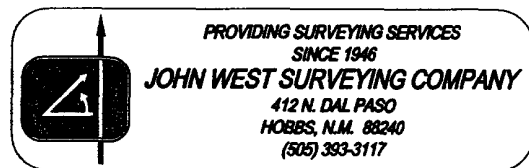
COUNTY LEA

DESCRIPTION 450' FSL & 1650' FWL

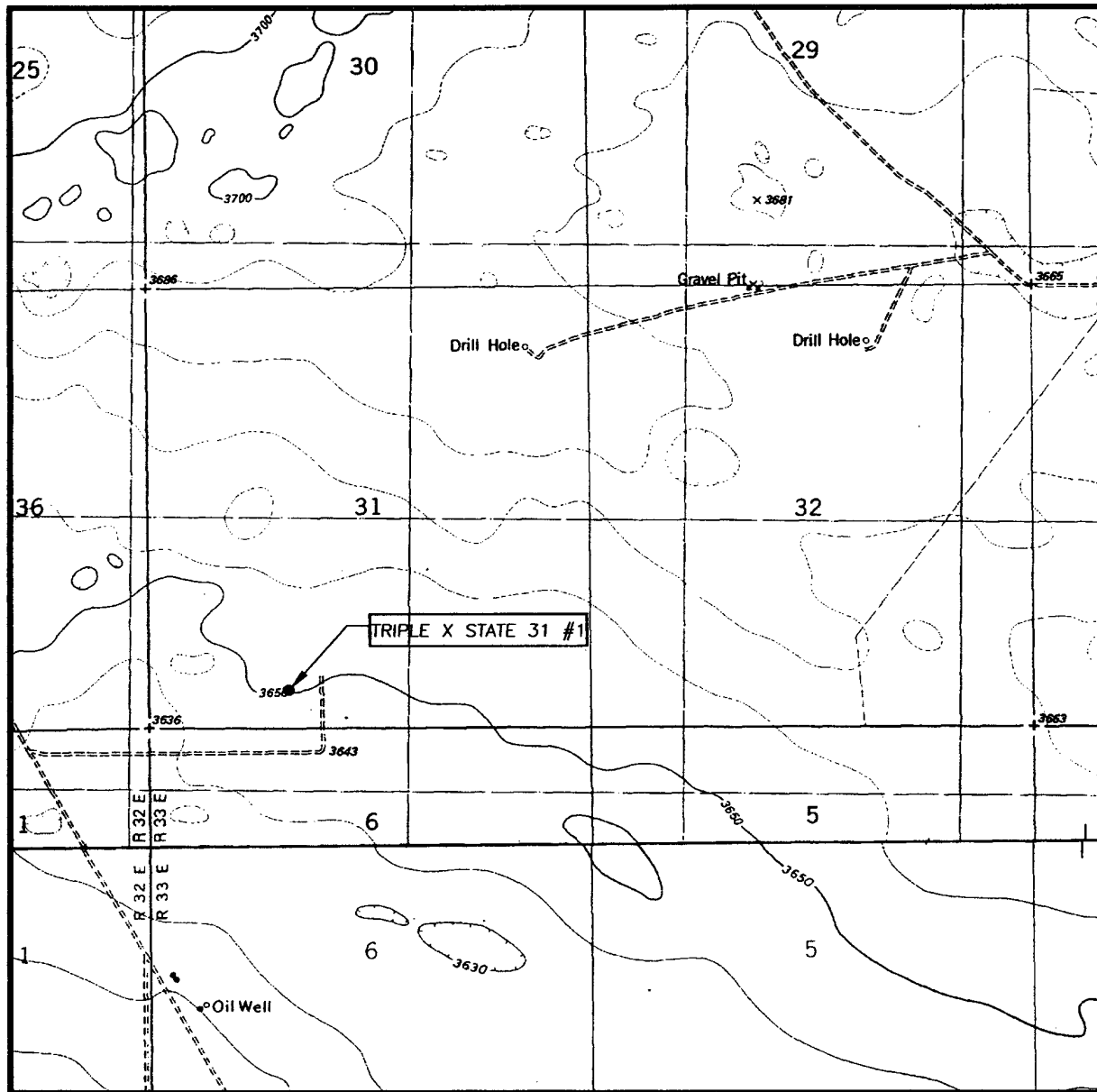
ELEVATION 3646'

OPERATOR POGO PRODUCTION COMPANY

LEASE TRIPLE X STATE 31



LOCATION VERIFICATION MAP



SCALE: 1" = 2000'

CONTOUR INTERVAL: 10
TIP TOP WELLS, N.M.

SEC. 31 TWP. 23-S RGE. 33-E

SURVEY _____ N.M.P.M.

COUNTY _____ LEA

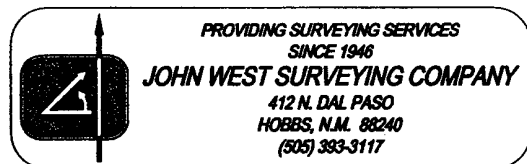
DESCRIPTION 450' FSL & 1650' FWL

ELEVATION _____ 3646'

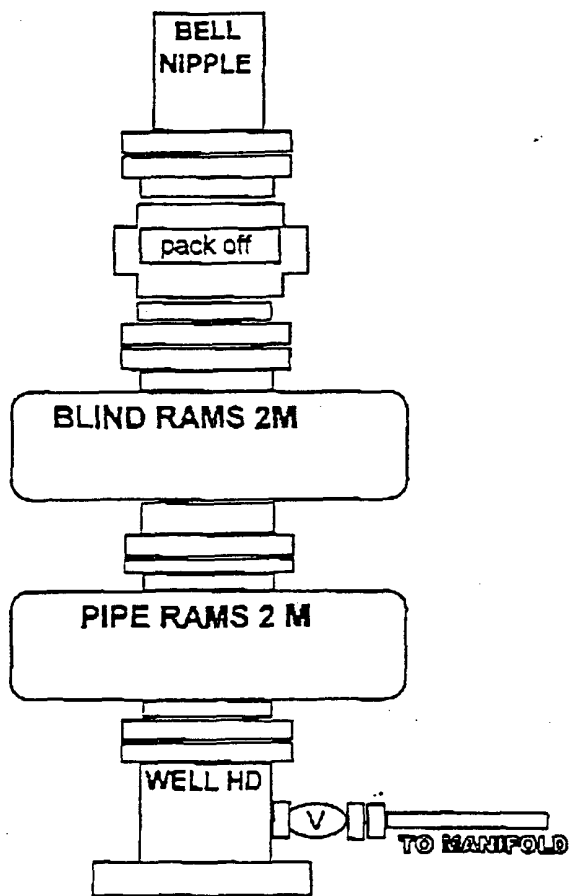
OPERATOR POGO PRODUCING COMPANY

LEASE _____ TRIPLE X STATE 31

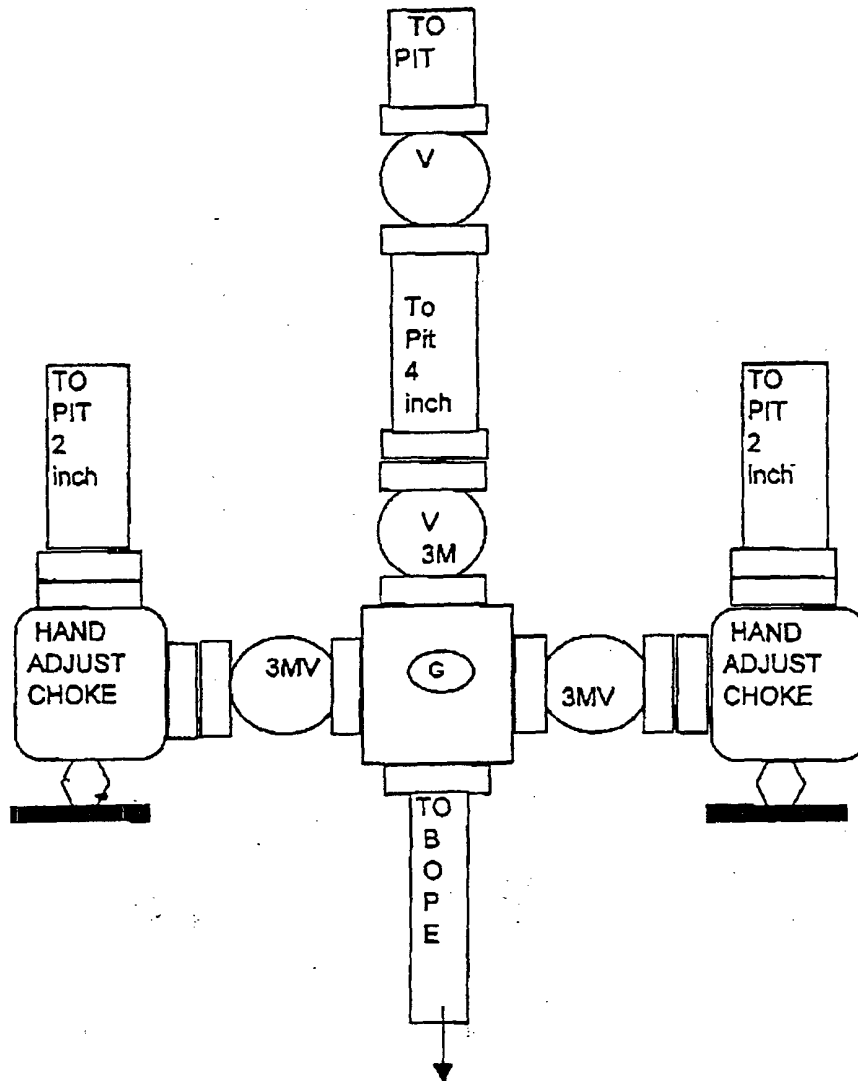
U.S.G.S. TOPOGRAPHIC MAP
TIP TOP WELLS, N.M.



11" 2M



3000 PSI WP



Date: 8/9/04
Printed Name/Title CHRIS WILLIAMS-DIST. SUPV Signature Chris Williams



Water Resources

Data Category:

Site Information

Geographic Area:

New Mexico

go

Site Map for New Mexico

USGS 321611103321601 23S.33E.26.42100

Available data for this site

Station site map

GO

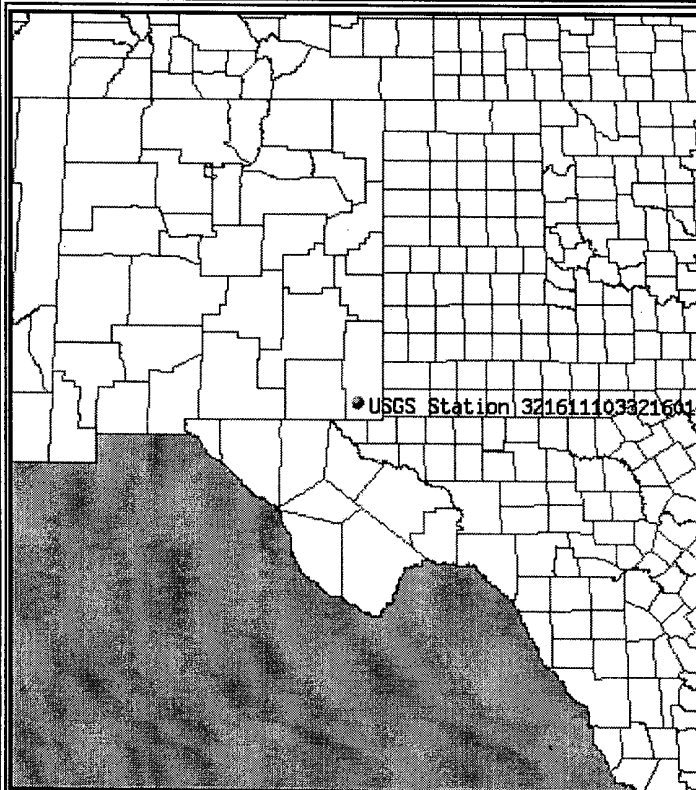
Lea County, New Mexico

Hydrologic Unit Code 13070007

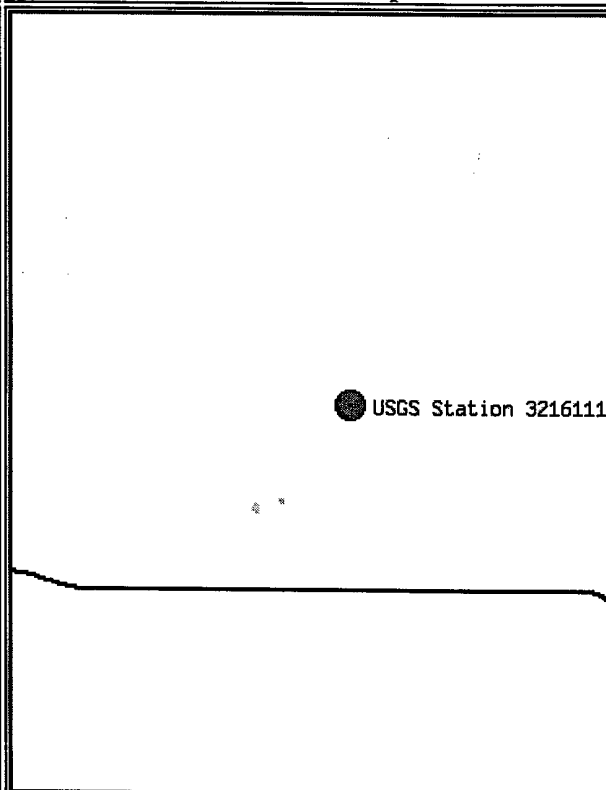
Latitude 32°16'11", Longitude 103°32'16" NAD27

Gage datum 3,644.00 feet above sea level NGVD29

Location of the site in New Mexico.



Site map.

ZOOM IN 2X, 4X, 6X, 8X, or ZOOM OUT 2X, 6X, 8X.

Maps are generated by US Census Bureau TIGER Mapping Service.

Questions about data [New Mexico NWISWeb Data Inquiries](#)Feedback on this website [New Mexico NWISWeb Maintainer](#)

NWIS Site Inventory for New Mexico: Site Map

<http://waterdata.usgs.gov/nm/nwis/nwismap?>[Top](#)[Explanation of terms](#)

Water Resources

Data Category:

Ground Water

Geographic Area:

New Mexico

go

Ground-water levels for New Mexico

Search Results -- 1 sites found

Search Criteria

site_no list = • 321611103321601

Save file of selected sites to local disk for future upload

USGS 321611103321601 23S.33E.26.42100

Available data for this site

Ground-water: Levels

GO

Lea County, New Mexico

Hydrologic Unit Code 13070007

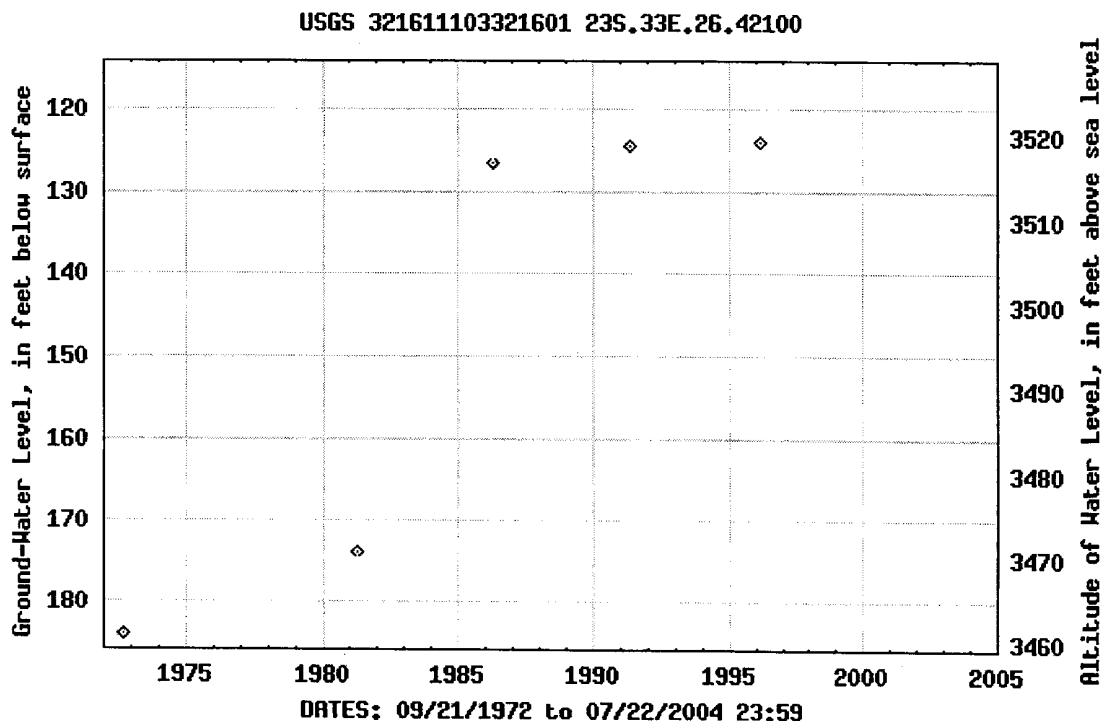
Latitude 32°16'11", Longitude 103°32'16" NAD27

Gage datum 3,644.00 feet above sea level NGVD29

The depth of the well is 190 feet below land surface.

This well is completed in CHINLE FORMATION (231CHNL)

Output formats

[Table of data](#)[Tab-separated data](#)[Graph of data](#)[Reselect period](#)

Breaks in the plot represent a gap of at least one calendar year between two consecutive points.

Great Circle Calculator.

By Ed Williams

You need Javascript enabled if you want this page to do anything useful! For Netscape, it's under Options/Network Preferences/Languages.

Compute true course and distance between points.

Enter lat/lon of points, select distance units and earth model and click "compute". Lat/lons may be entered in DD.DD, DD:MM.MM or DD:MM:SS.SS formats.

Note that if either point is very close to a pole, the course may be inaccurate, because of its extreme sensitivity to position and inevitable rounding error.

Input Data

Lat1		Lon1	
32:16:11	N	103:32:16	W
Lat2		Lon2	
32:15:17.11	N	103:36:46.4	W

Output

Course 1-2	Course 2-1	Distance
256.75838	76.718290	3.91531082

Distance Units: Earth model:

Compute lat/lon given radial and distance from a known point

Enter lat/lon of initial point, true course and distance. Select distance units and earth model and click "compute". Lat/lons may be entered in DD.DD, DD:MM.MM or DD:MM:SS.SS formats.

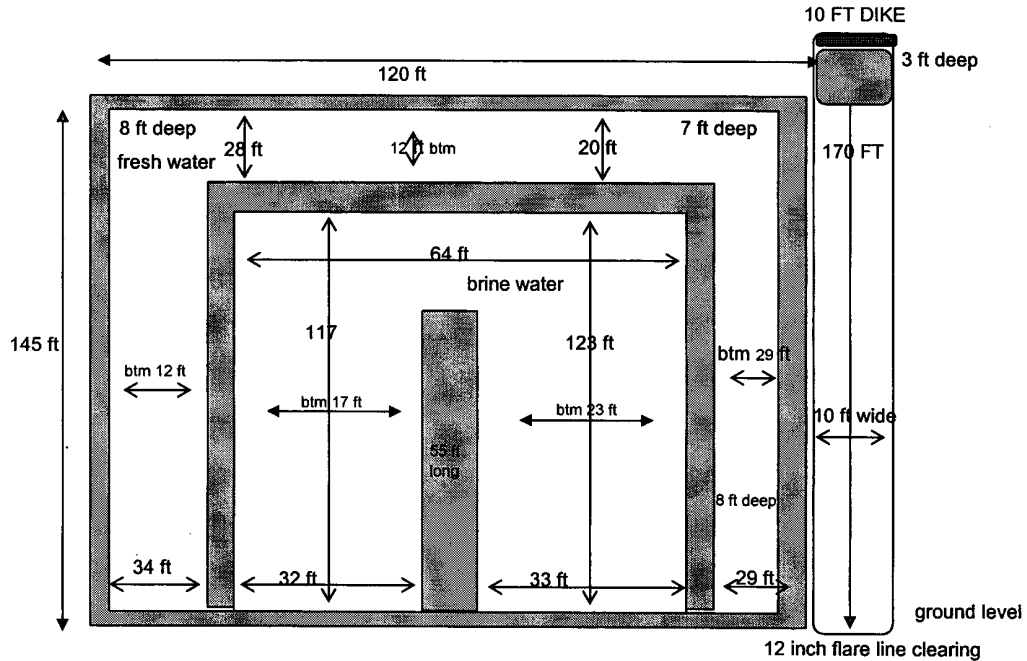
Note that the starting point cannot be a pole.

Input data

Lat1		Lon1	
0:00.00	N	0:00.00	W
Course 1-2		Distance 1-2	

POGO Producing Company
Triple "X" 31 State #1
Approximate Pit Dimensions

330' FSL & 1980' FWL, Sec 31, T23S, R33E, Lea County, New Mexico
 API # 30 025 36702



PIT NOTES:

Pit will be lined with 12 mil Black plastic w/ UV protection.

Pit walls are 6 ft to 8 ft wide.

Pit is 8 ft deep below ground level plus 2 ft walls

Pit walls are 2 ft above ground level.

Caliches mined from pit used to make Well Pad.

Fresh Water volume to ground level = \pm 7950 bbls

Brine Water volume to ground level = \pm 7730 bbls

12 inch Flare line laid on gradual descending graded ROW away from rig to avoid fluid trapping

Fresh water well = (Nad 27) 32° 13' 12" N & 103° 39' 56" W "Published data"

Fresh water well = (Nad 27) 32° 16' 11" N & 103° 32' 16" W "Published data"

Fresh water well = (Nad 27) 32° 13' 48" N & 103° 34' 04" W "Published data"

This well produces from a depth greater than 50 ft.

Pit equals approx 16000 bbls