

District I
1625 N. French Dr., Hobbs, NM 88240
District II
1301 W. Grand Avenue, Artesia, NM 88210
District III
1000 Rio Brazos Road, Aztec, NM 87410
District IV
1220 S. St. Francis Dr., Santa Fe, NM 87505

State of New Mexico
Energy Minerals and Natural Resources

Form C-101
March 4, 2004

Oil Conservation Division
1220 South St. Francis Dr.
Santa Fe, NM 87505

Submit to appropriate District Office
State Lease - 6 Copies
Fee Lease - 5 Copies

☐ AMENDED REPORT

APPLICATION FOR PERMIT TO DRILL, RE-ENTER, DEEPEN, PLUGBACK, OR ADD A ZONE

¹ Operator Name and Address PURE RESOURCES, L.P. 500 WEST ILLINOIS AVENUE MIDLAND, TEXAS 79701		² OGRID Number 150628
		³ API Number 30 - 025-36703
⁴ Property Code 33994	⁵ Property Name COCHISE "15" STATE	⁶ Well No. 1

⁷ Surface Location

UL or lot no.	Section	Township	Range	Lot Idn	Feet from the	North/South line	Feet from the	East/West line	County
D	15	22S	35E		660'	NORTH	660'	WEST	LEA

⁸ Proposed Bottom Hole Location If Different From Surface

UL or lot no.	Section	Township	Range	Lot Idn	Feet from the	North/South line	Feet from the	East/West line	County
---------------	---------	----------	-------	---------	---------------	------------------	---------------	----------------	--------

⁹ Proposed Pool 1

ROCK LAKE - MORROW (GAS) (83950)

¹⁰ Proposed Pool 2

Drilling Pit Location and Other Information

UL or lot no.	Section	Township	Range	Lot Idn	Feet from the	North/South line	Feet from the	East/West line	County
D	15	22S	35E		660'	NORTH	660'	WEST	LEA
Depth to ground water 185'			Distance from nearest fresh water well 1.2 Miles			Distance from nearest surface water 1.1 Miles			
¹¹ Work Type Code N		¹² Well Type Code G		¹³ Cable/Rotary ROTARY		¹⁴ Lease Type Code S		¹⁵ Ground Level Elevation 3573'	
¹⁶ Multiple NO		¹⁷ Proposed Depth 13,500'		¹⁸ Formation MORROW		¹⁹ Contractor GREY WOLF		²⁰ Spud Date WHEN APPROVED	

²¹ Proposed Casing and Cement Program

Hole Size	Casing Size	Casing weight/foot	Setting Depth	Sacks of Cement	Estimated TOC
36"	30"	NA	62'	Redi-mix	SURFACE
26"	20"	94	900'	1545 Sx	SURFACE
17½" & 12½"	9 5/8"	40	5800'	4235 Sx	SURFACE
8 3/4"	7"	26	11,650'	840 Sx	11,650' FS
6 1/8"	4½"	13.5	11,450-13,500'	215 Sx	11,650' FS

²² Describe the proposed program. If this application is to DEEPEN or PLUG BACK, give the data on the present productive zone and proposed new productive zone. Describe the blowout prevention program, if any. Use additional sheets if necessary.

SEE ATTACHED SHEET

Permit Expires 1 Year From Approval
Date Unless Drilling Underway

²³ I hereby certify that the information given above is true and complete to the best of my knowledge and belief. I further certify that the drilling pit will be constructed according to NMOCD guidelines ☒, a general permit ☐, or an (attached) alternative OCD-approved plan ☐.

Signature:

Printed name: Joe T. Janica

Title: Agent

E-mail Address:

Date: 05/18/04

Phone: 505-391-8503

OIL CONSERVATION DIVISION

Approved by:

PETROLEUM ENGINEER

Title:

Approval Date: MAY 18 2004

Expiration Date:

Conditions of Approval:

Attached ☒

PURE RESOURCES, L.P.
COCHISE "15" STATE # 1
UNIT "D" SECTION 15
T22S-R35E LEA CO. NM

1. Drill 36" hole to 62'. Set 62' of 30" conductor pipe and cement to surface with Redi-mix.
2. Drill 26" hole to 900'. Run and set 900' of 20" 94# X56 BTC casing. Cement with 1545 Sx. of Class "C" cement + additives, circulate cement to surface.
3. Drill 17½" hole to 4600' & 12¼" from 4600' to 5800'. Run and set 5800' of 9 5/8" 40# HCK-55 and J-55 LT&C casing. Cement in 2 stages with DV Tool at 3800'±. Cement 1st stage with 1110 Sx. of Class "C" cement + additives, cement 2nd stage with 4125 Sx. of Class "C" cement + additives, circulate cement to surface.
4. Drill 8 3/4" hole to 11,650'. Run and set 11,650' of 7" 26# P-110 LT&C casing. Cement with 840 Sx. of Class "H" Premium Plus cement + additives, estimate top of cement 4400' from surface.
5. Drill 6 1/8" hole to 13,500'. Run and set a 2050' of 4½" 13.5# P-110 LT&C liner from 13,500' back to 11,450'. Cement with 215 Sx. of Class "H" Premium Plus cement + additives, cement to top of liner.

DISTRICT I
P.O. Box 1980, Hobbs, NM 88241-1980

DISTRICT II
P.O. Drawer DD, Artesia, NM 88211-0719

DISTRICT III
1000 Rio Brazos Rd., Aztec, NM 87410

DISTRICT IV
P.O. BOX 2088, SANTA FE, N.M. 87504-2088

State of New Mexico
Energy, Minerals and Natural Resources Department

Form C-102
Revised February 10, 1994
Submit to Appropriate District Office
State Lease - 4 Copies
Fee Lease - 3 Copies

OIL CONSERVATION DIVISION

P.O. Box 2088
Santa Fe, New Mexico 87504-2088

WELL LOCATION AND ACREAGE DEDICATION PLAT

☐ AMENDED REPORT

API Number 30-025-36703	Pool Code 83950	Pool Name ROCK LAKE-MORROW (GAS)
Property Code 33994	Property Name COCHISE "15" STATE	Well Number 1
OGRID No. 150628	Operator Name PURE RESOURCES, L.P.	Elevation 3573'

Surface Location

UL or lot No.	Section	Township	Range	Lot Idn	Feet from the	North/South line	Feet from the	East/West line	County
D	15	22-S	35-E		660'	NORTH	660'	WEST	LEA

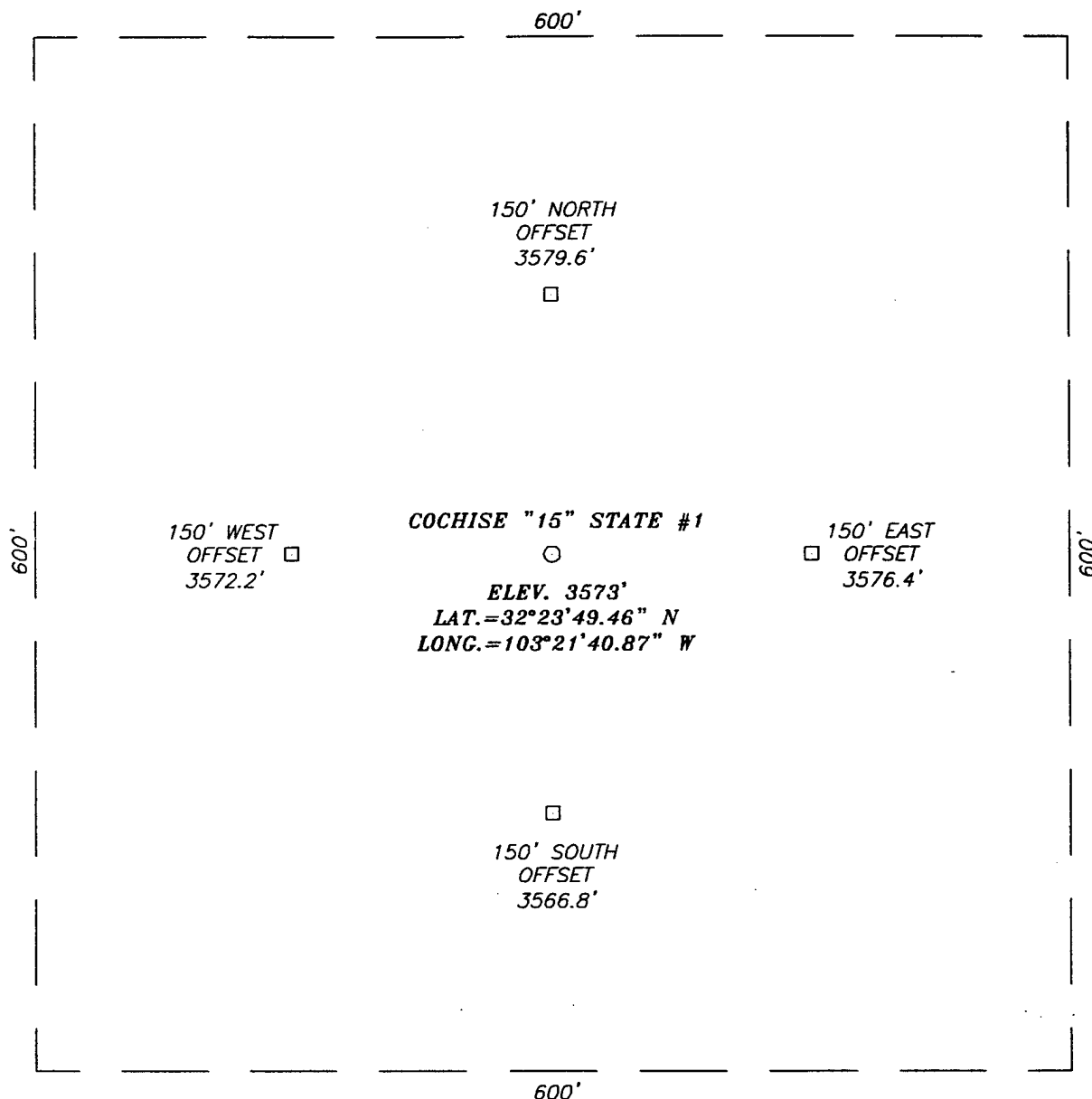
Bottom Hole Location If Different From Surface

UL or lot No.	Section	Township	Range	Lot Idn	Feet from the	North/South line	Feet from the	East/West line	County
Dedicated Acres 320'	Joint or Infill	Consolidation Code	Order No.						

NO ALLOWABLE WILL BE ASSIGNED TO THIS COMPLETION UNTIL ALL INTERESTS HAVE BEEN CONSOLIDATED
OR A NON-STANDARD UNIT HAS BEEN APPROVED BY THE DIVISION

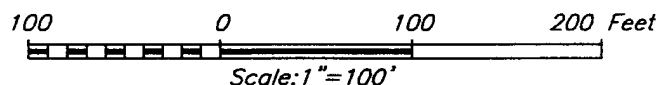
	<p>OPERATOR CERTIFICATION</p> <p>I hereby certify the the information contained herein is true and complete to the best of my knowledge and belief.</p> <p><i>Joe T. Janica</i> Signature Joe T. Janica Printed Name Agent Title 05/18/04 Date</p> <p>SURVEYOR CERTIFICATION</p> <p>I hereby certify that the well location shown on this plat was plotted from field notes of actual surveys made by me or under my supervision, and that the same is true and correct to the best of my belief.</p> <p>APRIL 30, 2004</p> <p>Date Surveyed Signature & Seal of Professional Surveyor <i>GARY EIDSON</i> 04.11.0504 Certificate No. GARY EIDSON 12641</p>
--	--------------------------------------------------------------------------------------------------------------------------------------------------------------------------------------------------------------------------------------------------------------------------------------------------------------------------------------------------------------------------------------------------------------------------------------------------------------------------------------------------------------------------------------------------------------------------------------------------------------------------------------------------------------------------------------------------------------------------

SECTION 15, TOWNSHIP 22 SOUTH, RANGE 35 EAST, N.M.P.M.,
LEA COUNTY, NEW MEXICO



DIRECTIONS TO LOCATION

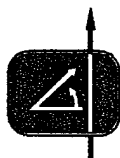
FROM THE INTERSECTION OF WEAVER & DELAWARE BASIN RD'S, GO WEST ALONG DELAWARE BASIN RD 0.85 MILES. TURN NORTH ONTO CALICHE ROAD AND GO 0.2 MILES NW TO AN EAST WEST ROAD. GO WEST 1.0 MILES TO A TEE INTERSECTION AND GO SOUTH APPROX. 0.15 MILE. TURN WEST AND GO 0.53 MILES. TURN SOUTH, (WHICH IS ON THE EASTSIDE OF ROCK LAKE) AND GO 700' TO A TEE INTERSECTION. GO 0.28 MILES WEST TO A "Y" IN THE ROAD, TAKE CALICHE ROAD TO THE RIGHT (NW) AND GO 700' TO ANOTHER "Y". GO WEST 0.98± MILES TO THIS LOCATION.



PURE RESOURCES, L.P.

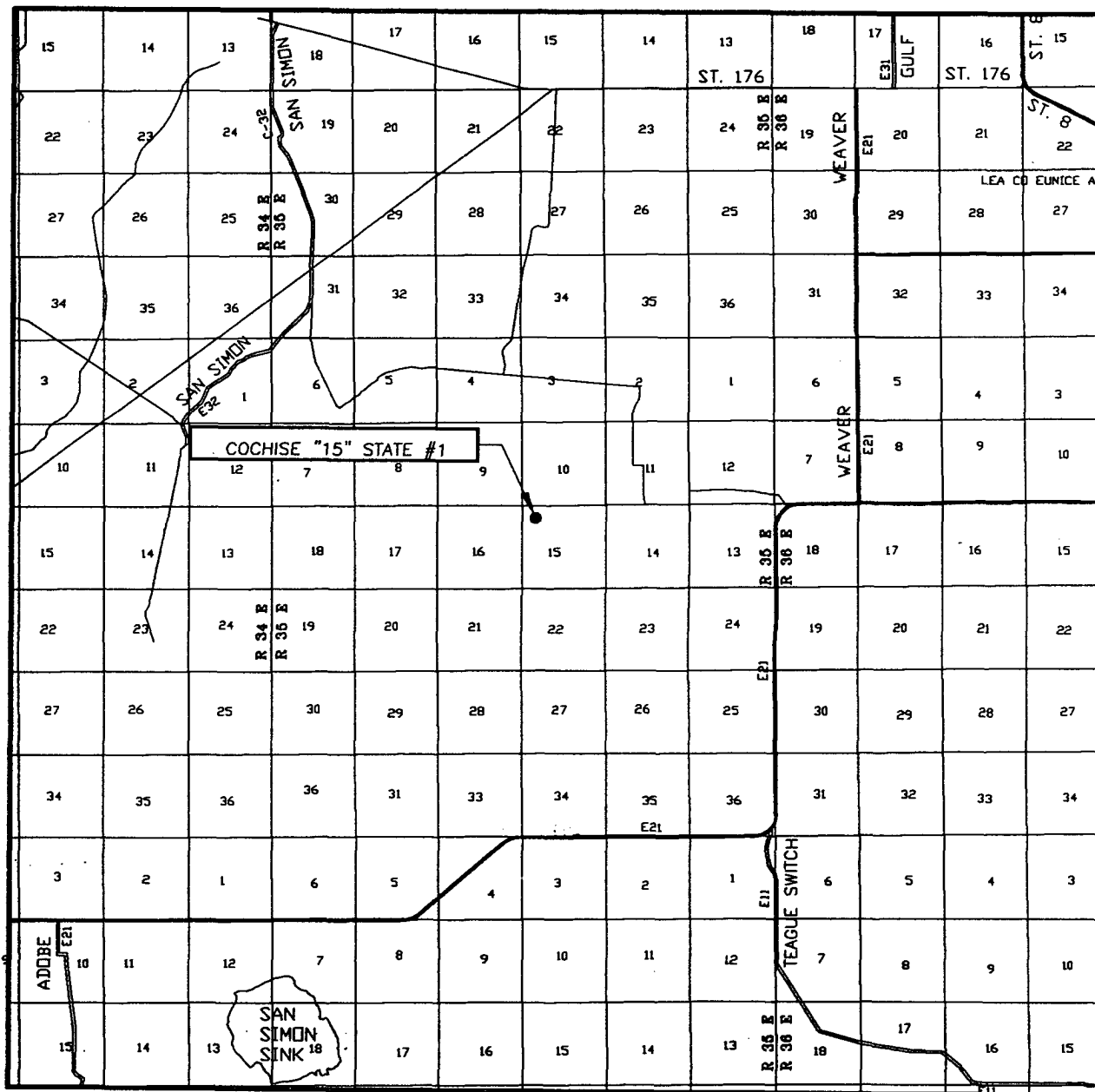
COCHISE "15" STATE #1 WELL
LOCATED 660 FEET FROM THE NORTH LINE
AND 660 FEET FROM THE WEST LINE OF SECTION 15,
TOWNSHIP 22 SOUTH, RANGE 35 EAST, N.M.P.M.,
LEA COUNTY, NEW MEXICO.

Survey Date: 04/30/04		Sheet 1 of 1 Sheets	
W.O. Number: 04.11.0504		Dr By: J. RIVERO	Rev 1:N/A
Date: 05/06/04	Disk: CD#10	04110504	Scale: 1"=100'



PROVIDING SURVEYING SERVICES
SINCE 1948
JOHN WEST SURVEYING COMPANY
412 N. DAL PASO
HOBBS, N.M. 88240
(505) 393-3117

VICINITY MAP



SCALE: 1" = 2 MILES

SEC. 15 TWP. 22-S RGE. 35-E

SURVEY N.M.P.M.

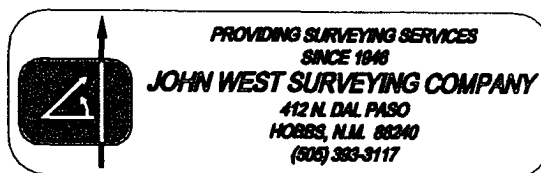
COUNTY EDDY

DESCRIPTION 660' FNL & 660' FWL

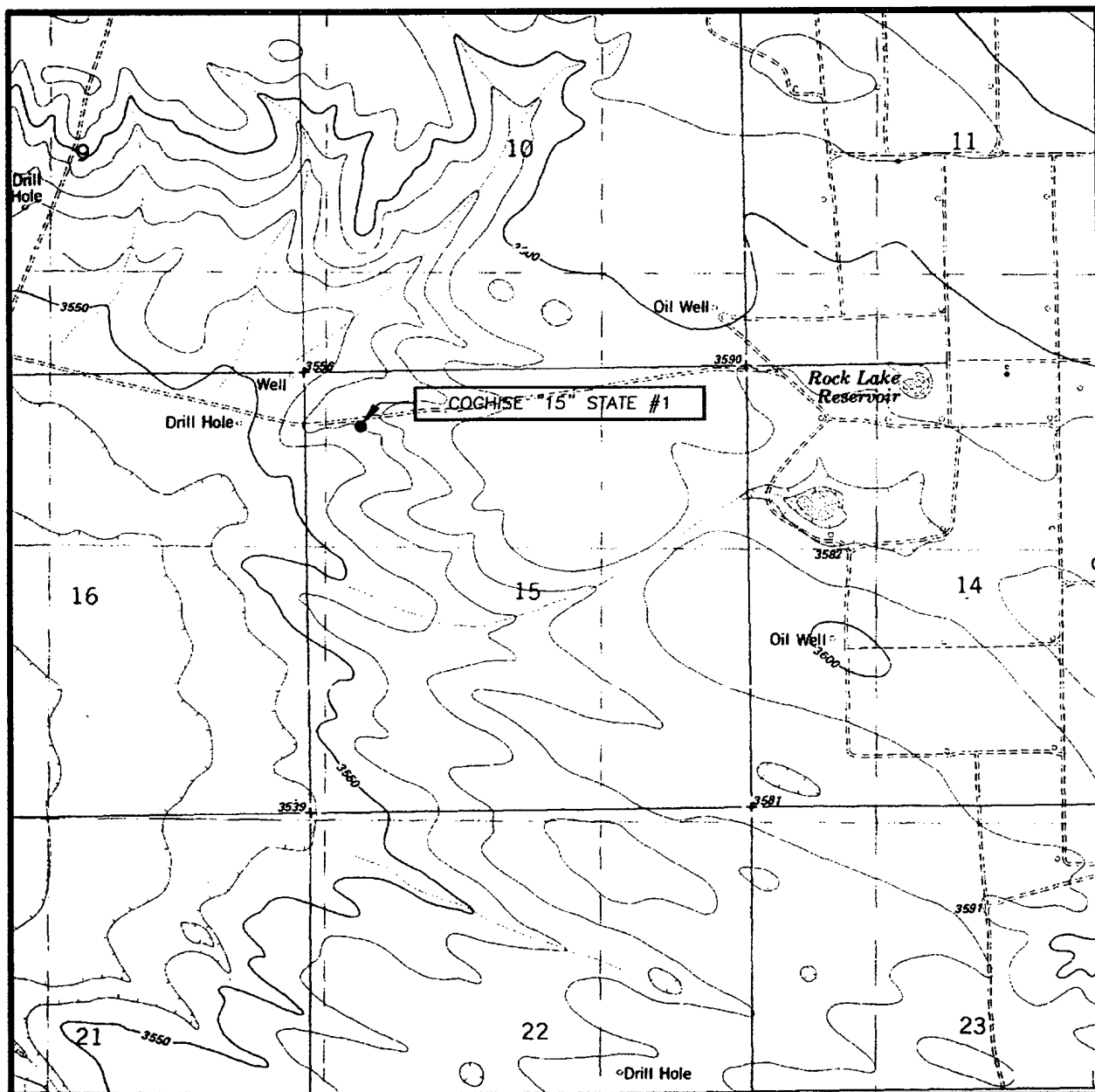
ELEVATION 3573'

OPERATOR PURE RESOURCES, L.P.

LEASE COCHISE "15" STATE



LOCATION VERIFICATION MAP



SCALE: 1" = 2000'

CONTOUR INTERVAL:
OIL CENTER, N.M. - 10'

SEC. 15 TWP. 22-S RGE. 35-E

SURVEY _____ N.M.P.M.

COUNTY _____ LEA

DESCRIPTION 660' FNL & 660' FWL

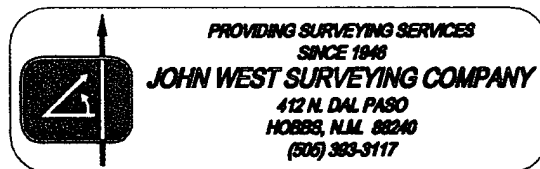
ELEVATION 3573'

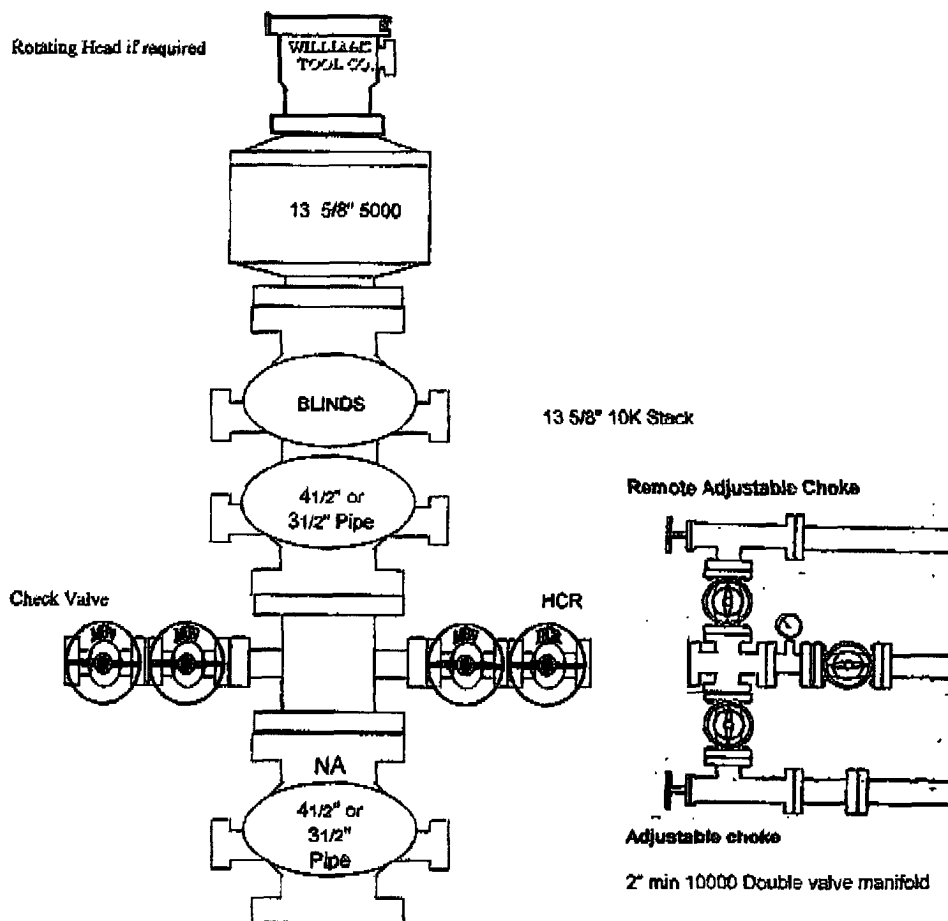
OPERATOR PURE RESOURCES, L.P.

LEASE COCHISE "15" STATE

U.S.G.S. TOPOGRAPHIC MAP

OIL CENTER, N.M.



13 5/8" 10K PSI Stack**Other instructions:**

1. Keep inside BOP and full-open TIW safety valve on the rig floor at all times. Test when pressure testing BOP's all test will be charted, low pressure test will be held for minimum of 1 minute, high pressure test will be held for a minimum of 5 minutes.
2. Test plug of same manufacture of wellhead will be kept on location with spare O-rings.
3. Before all trips in and out, fill out trip sheets and monitor trip tank every 5 stands of drill pipe and every stand of drill collars pulled and document on trip sheet to ensure the hole is taking the proper amount of fluid. Fill the hole periodically if drill string is on the bank for extended period of time.
4. All trips should be made at moderate speeds to prevent excessive surge and swab pressures.
5. Open HCR valve and close blind ram's while changing out bit or lower part of BHA. Inform rig crew before opening ram's.
6. Mud pits will be marked and monitored, upon any gain in pit volume due to a kick, stop drilling, raise Kelly slowly with mud pump running, kick out pump and check for flow.
7. On drilling breaks, drill 1'-3' of break and check for flow.
8. Record slow pump rates on both pumps daily, and record on IADC sheet.
9. Observe flowline for flow during logging operations. Keep hole loaded if hole is seeping.
10. BOP and choke manifold will be mechanically checked on each trip and pressure tested every 4 weeks or as dictated by length.
11. BOP drills will be held weekly on each tour.
12. Double valve active annulus. Bull plug on one side is acceptable.

District I
1625 N. French Dr., Hobbs, NM 88240
District II
1301 W. Grand Avenue, Artesia, NM 88210
District III
1000 Rio Brazos Road, Aztec, NM 87410
District IV
1220 S. St. Francis Dr., Santa Fe, NM 87505

State of New Mexico
Energy Minerals and Natural Resources
Oil Conservation Division
1220 South St. Francis Dr.
Santa Fe, NM 87505

Form C-144
March 12, 2004

For drilling and production facilities, submit to
appropriate NMOCD District Office.
For downstream facilities, submit to Santa Fe
office

Pit or Below-Grade Tank Registration or Closure

Is pit or below-grade tank covered by a "general plan"? Yes ☒ No ☐

Type of action: Registration of a pit or below-grade tank ☒ Closure of a pit or below-grade tank ☐

Operator: <u>PURE RESIURCES, L.P.</u> Telephone: _____ e-mail address: _____		
Address: <u>500 WEST ILLINOIS AVENUE MIDLAND, TEXAS 79701</u>		
Facility or well name: <u>COCHISE "15" STATE</u> API #: <u>30-025-36703</u> U/L or Qtr/Qtr <u>D</u> Sec <u>15</u> T <u>22S</u> R <u>35E</u>		
County: <u>LEA</u> Latitude <u>32°23'49.5"</u> Longitude <u>103°21'41"</u> NAD: 1927 <input type="checkbox"/> 1983 <input type="checkbox"/> Surface Owner Federal <input checked="" type="checkbox"/> State <input type="checkbox"/> Private <input type="checkbox"/> Indian <input type="checkbox"/>		
Pit Type: Drilling <input checked="" type="checkbox"/> Production <input type="checkbox"/> Disposal <input type="checkbox"/> Workover <input type="checkbox"/> Emergency <input type="checkbox"/> Lined <input type="checkbox"/> Unlined <input type="checkbox"/> Liner type: Synthetic <input type="checkbox"/> Thickness <u>12</u> mil Clay <input type="checkbox"/> Volume <u>2000</u> bbl	Below-grade tank Volume: _____ bbl Type of fluid: _____ Construction material: _____ Double-walled, with leak detection? Yes <input type="checkbox"/> If not, explain why not. _____	
Depth to ground water (vertical distance from bottom of pit to seasonal high water elevation of ground water.) <u>180' ±</u>	Less than 50 feet	(20 points)
	50 feet or more, but less than 100 feet	(10 points)
	100 feet or more <u>X</u>	(0 points)
Wellhead protection area: (Less than 200 feet from a private domestic water source, or less than 1000 feet from all other water sources.)	Yes	(20 points)
	No <u>X</u>	(0 points)
Distance to surface water: (horizontal distance to all wetlands, playas, irrigation canals, ditches, and perennial and ephemeral watercourses.)	Less than 200 feet	(20 points)
	200 feet or more, but less than 1000 feet	(10 points)
	1000 feet or more <u>X</u>	(0 points)
Ranking Score (Total Points)		<u>-0-</u>

If this is a pit closure: (1) attach a diagram of the facility showing the pit's relationship to other equipment and tanks. (2) Indicate disposal location: onsite ☐ offsite ☐ If offsite, name of facility _____. (3) Attach a general description of remedial action taken including remediation start date and end date. (4) Groundwater encountered: No ☐ Yes ☐ If yes, show depth below ground surface _____ ft. and attach sample results. (5) Attach soil sample results and a diagram of sample locations and excavations.

I hereby certify that the information above is true and complete to the best of my knowledge and belief. I further certify that the above-described pit or below-grade tank has been/will be constructed or closed according to NMOCD guidelines ☒, a general permit ☐ or an (attached) alternative OCD-approved plan ☐.

Date: 05/18/04

Printed Name/Title Joe T. Janica Agent

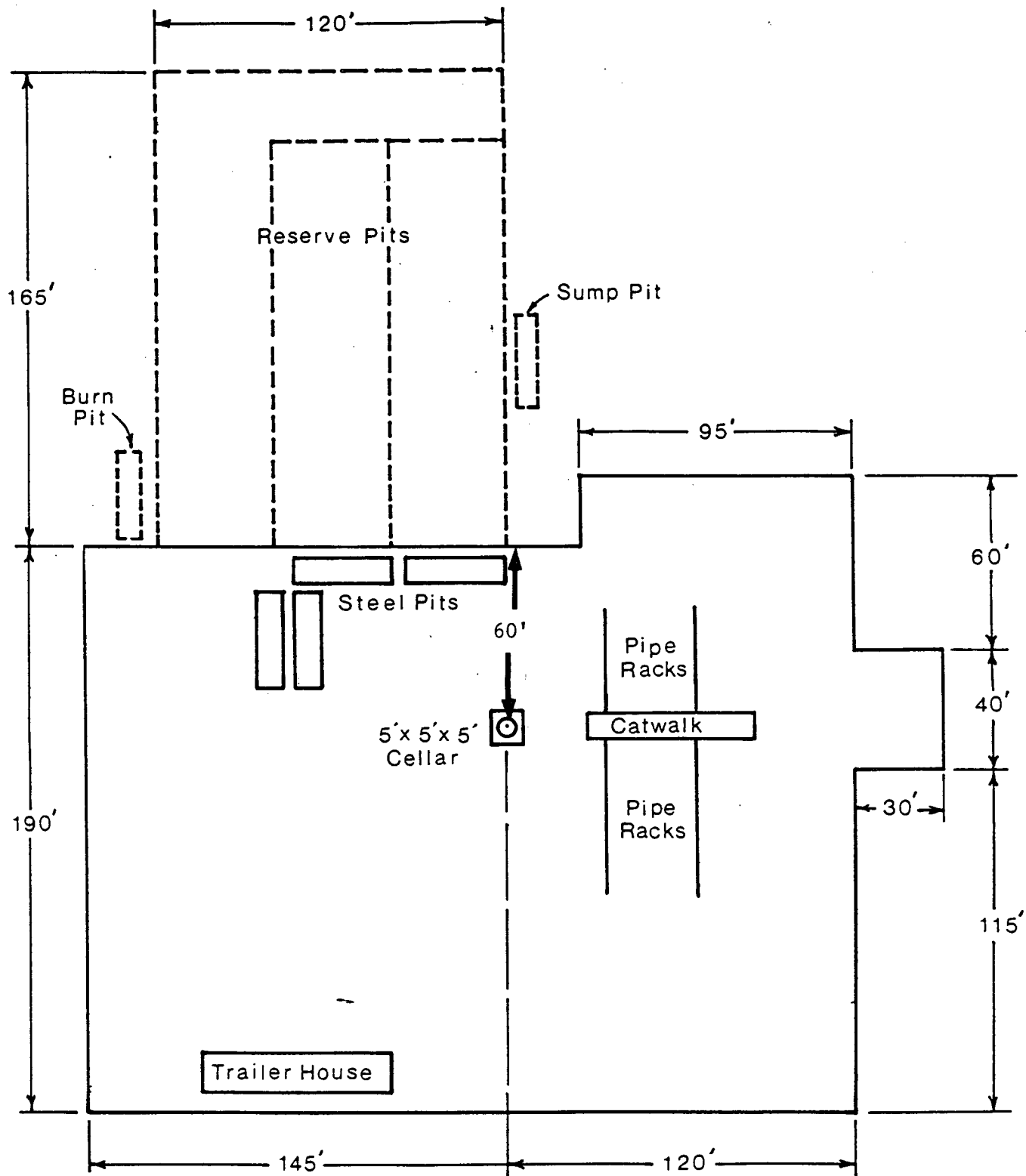
Signature Joe T. Janica

Your certification and NMOCD approval of this application/closure does not relieve the operator of liability should the contents of the pit or tank contaminate ground water or otherwise endanger public health or the environment. Nor does it relieve the operator of its responsibility for compliance with any other federal, state, or local laws and/or regulations.

Approval:

Date: _____

Printed Name/Title _____ Signature _____



C-101/C-144 DRILLING PIT REGISTRATION CODITIONS OF APPROVAL

API number:	30-025-36703		
OGRID:		Operator:	PURE RESOURCES LP
			500 WEST ILLINOIS AVE
			MIDLAND TX 79701
		Property:	COCHISE 15 STATE # 1

surface	ULSTR:	D	15	T	22S	R	35E
			660	FNL	660	FWL	

XXXXXX	Pit must be lined with a minimum of a 12 mil re-enforced or 20 mil re-enforced liner.
XXXXXX	The pit must be deep enough so that when pit is closed it can be covered with 3 feet of dirt and surface leveled
	If the pit is to be encapsulated in place, the liner is to be a minimum thickness of 20 mil re-enforced liner
XXXXXX	When using a 12 mil nylon re-enforced liner. The contents of the pit must be removed along with the liner and disposed of in an approved facility within 6 months of completion of the well.
	When using a 20 mil liner. The pit must be closed within 6 months of completion of the well.
	This site has a Ranking Score of 20 points or higher. The contents of the pit must be removed along with the liner and disposed of in an approved facility within 6 months of completion of the well.
XXXXXX	Before pit is closed, submit a subsequent Form C-144 along with any additional information which may be applicable to the appropriate NMOCD District Office for approval.
XXXXXX	Notify appropriate NMOCD District Office by E-mail 48 hrs prior to closing pit.
XXXXXX	The operator is required to comply with NMOCD guidelines.
XXXXXX	OCD approval does not release the operator of its responsibilities for compliance with any other federal, state, or local laws and/or regulations.

Drilling Pit Registration Approval

District Supervisor Chris Williams
District Geologist Paul F Kautz

505-393-6161
ext 102
ext 104

Drilling Pit closure

Environmental Spec Larry Johnson
Environmental Spec Paul Sheeley

505-393-6161
ext 111 lwjohnson@state.nm.us
ext 113 psheeley@state.nm.us