

District I

1625 N. French Dr., Hobbs, NM 88240

District II

1301 W. Grand Ave., Artesia, NM 88210

District III

1000 Rio Brazos Rd., Aztec, NM 87410

District IV

1220 S. St. Francis Dr., Santa Fe, NM 87505

State of New Mexico
Energy, Minerals and Natural Resources

OIL CONSERVATION DIVISION
1220 South St. Francis Dr.
Santa Fe, NM 87505

Form C-103
March 4, 2004

WELL API NO.
30-025-24210

5. Indicate Type of Lease

STATE ☐ FEE ☒ X

6. State Oil & Gas Lease No.

7. Lease Name or Unit Agreement Name

PARKS A

8. Well Number

8

9. OGRID Number

12024

10. Pool name or Wildcat
LANGLEY-MADDOX

SUNDRY NOTICES AND REPORTS ON WELLS

(DO NOT USE THIS FORM FOR PROPOSALS TO DRILL OR TO DEEPEN OR PLUG BACK TO A DIFFERENT RESERVOIR. USE "APPLICATION FOR PERMIT" (FORM C-101) FOR SUCH PROPOSALS.)

1. Type of Well:

Oil Well ☒ Gas Well ☐ Other

2. Name of Operator

JOHN H. HENDRIX CORP.

3. Address of Operator

P.O. BOX 3040, MIDLAND, TX 79702-3040

4. Well Location

Unit Letter J : 1980 feet from the SOUTH line and 1980 feet from the EAST line

Section 14 Township 22S Range 37E NMPM County LEA

11. Elevation (Show whether DR, RKB, RT, GR, etc.)
3341' DF

Pit or Below-grade Tank Application (For pit or below-grade tank closures, a form C-144 must be attached)

Pit Location: UL J Sect 14 Twp 22S Rng 37E Pit type STEEL Depth to Groundwater 68' Distance from nearest fresh water well *

Distance from nearest surface water * Below-grade Tank Location UL Sect Twp Rng ;

feet from the line and feet from the line *Over 1000', per Howard Boatright, Tetra

12. Check Appropriate Box to Indicate Nature of Notice, Report or Other Data

NOTICE OF INTENTION TO:

PERFORM REMEDIAL WORK ☐ PLUG AND ABANDON ☒ X

TEMPORARILY ABANDON ☐ CHANGE PLANS ☐

PULL OR ALTER CASING ☐ MULTIPLE COMPLETION ☐

OTHER: ☐

SUBSEQUENT REPORT OF:

REMEDIAL WORK ☐ ALTERING CASING ☐

COMMENCE DRILLING OPNS. ☐ PLUG AND ABANDONMENT ☐

CASING TEST AND CEMENT JOB ☐

OTHER: ☐

13. Describe proposed or completed operations. (Clearly state all pertinent details, and give pertinent dates, including estimated date of starting any proposed work). SEE RULE 1103. For Multiple Completions: Attach wellbore diagram of proposed completion or recompletion.

SEE ATTACHED PROCEDURE

I hereby certify that the information above is true and complete to the best of my knowledge and belief. I further certify that any pit or below-grade tank has been/will be constructed or closed according to NMOCD guidelines ☐, a general permit ☐ or an (attached) alternative OCD-approved plan ☐.

SIGNATURE Debbie McKelvey TITLE AGENT DATE 6/1/04

Type or print name DEBBIE MCKELVEY E-mail address: debmckelvey@earthlink.net Telephone No. 392-3575

(This space for State use)

APPROVED BY Lang W. Wink OFFICE REPRESENTATIVE II / STAFF MANAGER DATE JUN 02 2004

Conditions of approval, if any:

PLUGGING AND ABANDONMENT PROCEDURES

John H. Hendrix Corporation

Parks A Well No. 8

Lea County, New Mexico

P & A PROCEDURE

1. Will use steel pits to circulate into.
2. Rig up reverse unit and tools. Clean out the wellbore to the top of fish at 2833'.
3. The fish consists of 2637' of 2-3/8" tubing and a 2-3/8"x5-1/2" TAC and 318' of 2-3/8" tail pipe below the TAC. There are rods and a pump inside the tubing.
4. Rig up the appropriate fishing tools and fish tubing and rods.
5. RIH w/ 2-3/8" tubing to 6150'. Spot 100 sx. plug. PUH and WOC.
6. Tag top of plug at 5460'.
7. PUH to 4050' and spot a 35 sx. plug.
8. POOH w/ tubing.
9. RIH w/ tubing and packer. Set packer at 2533' (Base of salt).
10. Establish injection rate and squeeze under packer w/ 300 sx. of cement. Displace top of cement to 2700'. SWI and WOC.
11. Release packer and tag top of cement at 2700'.
12. PUH and set packer at 800'.
13. With a through tubing gun, perforate casing at 1100' (top of salt).
14. With 8-5/8" casing valve open, establish injection rate and squeeze perforations w/ 300 sx. of cement. Displace top of cement to 1000'. SWI and WOC.
15. Release packer and tag top of plug at 1000'.
16. POOH w/ tubing and packer.
17. Perforate casing at 350'.
18. RIH w/ packer on pupjoint and set packer.
19. With the 8-5/8" casing valve open, circulate cement to surface. Keep the hole full. Use 100 sx. cement.
20. Cut off wellhead. Place dry hole marker.

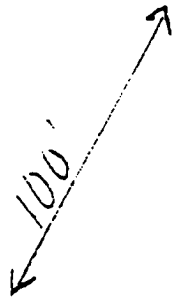
John H. Hendrix Corp
Parks "A" #8

2 Above Ground Steel Pits

•
Anchors

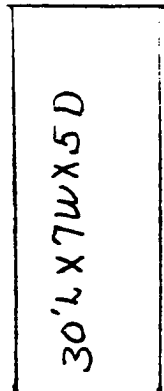
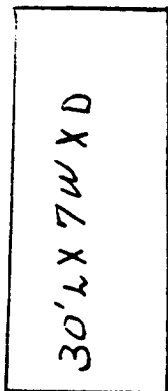
•
Anchors

Well Bore
⊗



•
Anchors

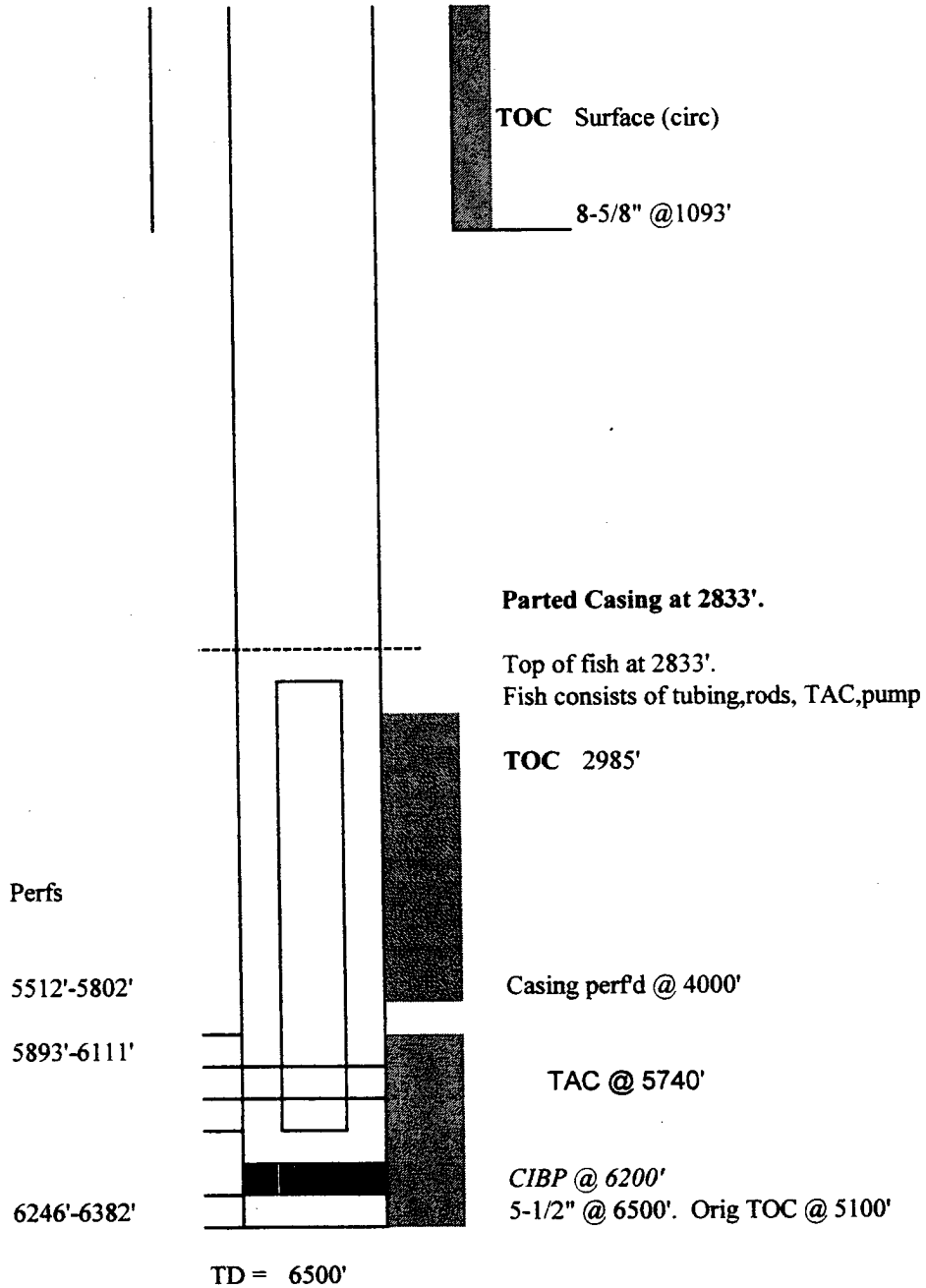
•
Anchors



WELL NAME AND NUMBER

Parks A Well No. 8
John H. Hendrix Corp
Lea County, New Mexico

WELLBORE CONFIGURATION



WELL NAME AND NUMBER

Parks A Well No. 8
John H. Hendrix Corp
Lea County, New Mexico

**Proposed Plugging
WELLBORE CONFIGURATION**

