

District I
1625 N. French Dr., Hobbs, NM 88240
District II
1301 W. Grand Avenue, Artesia, NM 88210
District III
1000 Rio Brazos Road, Aztec, NM 87410
District IV
1220 S. St. Francis Dr., Santa Fe, NM 87505

State of New Mexico
Energy Minerals and Natural Resources

Oil Conservation Division
1220 South St. Francis Dr.
Santa Fe, NM 87505

Form C-101
Revised March 17, 1995

Submit to appropriate District Office
State Lease - 6 Copies
Fee Lease - 5 Copies

☐ AMENDED REPORT

APPLICATION FOR PERMIT TO DRILL, RE-ENTER, DEEPEN, PLUGBACK, OR ADD A ZONE

¹ Operator Name and Address Rubicon Oil & Gas, LLC 400 West Illinois - Suite 1130 Midland, Texas 79701		² OGRID Number 194266
³ Property Code 32307	⁵ Property Name Ainsworth	⁴ API Number 30-025-36268

⁷ Surface Location									
UL or lot no.	Section	Township	Range	Lot Idn	Feet from the	North/South line	Feet from the	East/West line	County
J	23	9S	33E		2086	South	1874	East	Lea

⁸ Proposed Bottom Hole Location If Different From Surface									
UL or lot no.	Section	Township	Range	Lot Idn	Feet from the	North/South line	Feet from the	East/West line	County

⁹ Proposed Pool 1 Flying "M"; Abo	¹⁰ Proposed Pool 2 Primary objective is Abo. Will drill to test Bough "C" in the area.
---	--

¹¹ Work Type Code N	¹² Well Type Code O	¹³ Cable/Rotary R	¹⁴ Lease Type Code S & P	¹⁵ Ground Level Elevation
¹⁶ Multiple No	¹⁷ Proposed Depth 10,000'	¹⁸ Formation Bough "C"	¹⁹ Contractor N.A.	²⁰ Spud Date 5-15-03

²¹ Proposed Casing and Cement Program					
Hole Size	Casing Size	Casing weight/foot	Setting Depth	Sacks of Cement	Estimated TOC
17-1/2"	13-3/8"	48#	400'	420 sx "C"	Surface
11"	8-5/8"	32#	4000'	1000 Lite, 200 "C"	Surface
7-7/8"	5-1/2"	17#	10,000'	400 sx "H", 725 sx Lite, 2 Stage	3700'

²² Describe the proposed program. If this application is to DEEPEN or PLUG BACK, give the data on the present productive zone and proposed new productive zone.

Describe the blowout prevention program, if any. Use additional sheets if necessary. We plan to set casing as indicated above. We plan to set 5-1/2" casing at 10,000' with a stage cementing tool at 6700'± and cement to bring top of cement to 3700'±. BOP will be installed on the 13-3/8" casinghead and tested with the rig pumps. BOP will be installed on 8-5/8" casinghead and tested to rated pressure by a third party service. BOP will not be less than 3000# W.P.. Casing will be set and cemented as per Rule 107. BOP equipment will be installed and maintained as per Rule 109.

Permit Expires 1 Year From Approval
Date Unless Drilling Underway

²³ I hereby certify that the information given above is true and complete to the best of my knowledge and belief. Signature: <i>Darol K. Ramey</i> Printed name: Darol K. Ramey Title: Agent Date: 4-29-03		OIL CONSERVATION DIVISION Approved by: <i>[Signature]</i> Title: PETROLEUM ENGINEER Approval Date: MAY 01 2003 Conditions of Approval: Attached <input type="checkbox"/>	
Phone: 432/687-1192		Expiration Date:	

DISTRICT I
P.O. Box 1880, Hobbs, NM 88241-1880

DISTRICT II
P.O. Drawer DD, Artesia, NM 88211-0719

DISTRICT III
1000 Rio Brazos Rd., Aztec, NM 87410

DISTRICT IV
P.O. BOX 2088, SANTA FE, N.M. 87504-2088

State of New Mexico
Energy, Minerals and Natural Resources Department

OIL CONSERVATION DIVISION

P.O. Box 2088
Santa Fe, New Mexico 87504-2088

Form C-102
Revised February 10, 1994
Submit to Appropriate District Office
State Lease - 4 Copies
Fee Lease - 3 Copies

WELL LOCATION AND ACREAGE DEDICATION PLAT

☐ AMENDED REPORT

API Number 30-025-36268	Pool Code 24580	Pool Name Flying "M"; Abo
Property Code 32307	Property Name AINSWORTH	Well Number 1
OGRID No. 194266	Operator Name RUBICON OIL & GAS LLC	Elevation 4332'

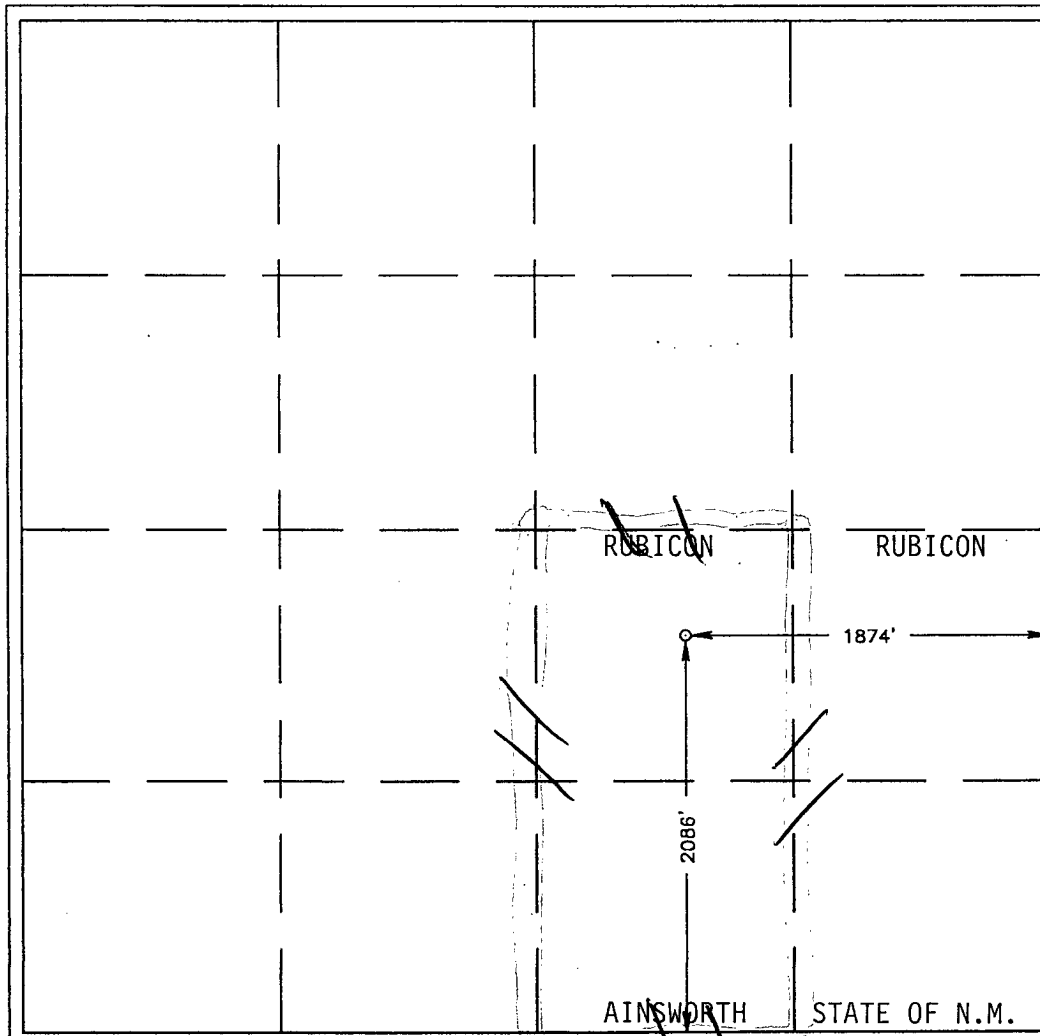
Surface Location

UL or lot No. J	Section 23	Township 9-S	Range 33-E	Lot Idn	Feet from the 2086'	North/South line SOUTH	Feet from the 1874'	East/West line EAST	County LEA
---------------------------	----------------------	------------------------	----------------------	---------	-------------------------------	----------------------------------	-------------------------------	-------------------------------	----------------------

Bottom Hole Location If Different From Surface

UL or lot No.	Section	Township	Range	Lot Idn	Feet from the	North/South line	Feet from the	East/West line	County
Dedicated Acres 80	Joint or Infill	Consolidation Code	Order No.						

NO ALLOWABLE WILL BE ASSIGNED TO THIS COMPLETION UNTIL ALL INTERESTS HAVE BEEN CONSOLIDATED
OR A NON-STANDARD UNIT HAS BEEN APPROVED BY THE DIVISION



OPERATOR CERTIFICATION

I hereby certify the the information
contained herein is true and complete to the
best of my knowledge and belief.

Signature

Darol K. Ramey

Printed Name

Agent

Title

April 29, 2003

Date

SURVEYOR CERTIFICATION

I hereby certify that the well location shown
on this plat was plotted from field notes of
actual surveys made by me or under my
supervision, and that the same is true and
correct to the best of my belief.

April 11, 2003

Date Surveyed

A.W.B.

Signature & Seal of
Professional Surveyor

RONALD F. EIDSON
4/14/03
03.11.0405

Certificate No. **RONALD F. EIDSON 3239**
GARY EIDSON 12641