

District I  
1625 N. French Dr., Hobbs, NM 88240  
District II  
1301 W. Grand Avenue, Artesia, NM 88210  
District III  
1000 Rio Brazos Road, Aztec, NM 87410  
District IV  
1220 S. St. Francis Dr., Santa Fe, NM 87505

State of New Mexico  
Energy Minerals and Natural Resources

Oil Conservation Division  
1220 South St. Francis Dr.  
Santa Fe, NM 87505

RECEIVED

MAY 10 2004  
MAY 10 2004 Submit to appropriate District Office  
OCD-ARTESIA State Lease - 6 Copies  
Fee Lease - 5 Copies

Form C-101  
March 4, 2004

☐ AMENDED REPORT

**APPLICATION FOR PERMIT TO DRILL, RE-ENTER, DEEPEN, PLUGBACK, OR ADD A ZONE**

<sup>1</sup> Operator Name and Address Yates Petroleum Corporation 105 South Fourth Street Artesia, NM 88210		<sup>2</sup> OGRID Number 025575 API Number 30 - 025-00012
<sup>3</sup> Property Code 26160	<sup>5</sup> Property Name Sohio AVR State	<sup>6</sup> Well No. 1

**7 Surface Location**

UL or lot no.	Section	Township	Range	Lot Idn	Feet from the	North/South line	Feet from the	East/West line	County
K	9	10S	32E		1980	South	1980	West	Lea

**8 Proposed Bottom Hole Location If Different From Surface**

UL or lot no.	Section	Township	Range	Lot Idn	Feet from the	North/South line	Feet from the	East/West line	County

<sup>9</sup> Proposed Pool 1  
Wildcat Devonian

<sup>10</sup> Proposed Pool 2

**Drilling Pit Location and Other Information**

UL or lot no.	Section	Township	Range	Lot Idn	Feet from the	North/South line	Feet from the	East/West line	County
K	9	10S	32E		1980	South	1980	West	Lea

Depth to ground water  
30'

Distance from nearest fresh water well  
6500'

Distance from nearest surface water  
6500'

<sup>11</sup> Work Type Code  
E

<sup>12</sup> Well Type Code  
O

<sup>13</sup> Cable/Rotary  
Rotary

<sup>14</sup> Lease Type Code  
S

<sup>15</sup> Ground Level Elevation  
4360'

<sup>16</sup> Multiple  
No

<sup>17</sup> Proposed Depth  
12,147'

<sup>18</sup> Formation  
Devonian

<sup>19</sup> Contractor  
Not Determined

<sup>20</sup> Spud Date  
ASAP

**21 Proposed Casing and Cement Program**

Hole Size	Casing Size	Casing weight/foot	Setting Depth	Sacks of Cement	Estimated TOC
17"	13 3/8"	48#	390'	400	In Place
12 1/4"	9 5/8"	36#	3591'	1600	In Place
7 7/8"	5 1/2"	17#	12,147'	950	TOC-6700'

22 Describe the proposed program. If this application is to DEEPEN or PLUG BACK, give the data on the present productive zone and proposed new productive zone. Describe the blowout prevention program, if any. Use additional sheets if necessary.

SEE ATTACHED SHEETS FOR ADDITIONAL INFORMATION

<sup>23</sup> I hereby certify that the information given above is true and complete to the best of my knowledge and belief. I further certify that the drilling pit will be constructed according to NMOCD guidelines ☐, a general permit ☒, or an (attached) alternative OCD-approved plan ☐.

Signature:

*Clifton May*

Printed name: Clifton May

Title: Regulatory Agent

E-mail Address: dehbiec@ypcn.com

Date: May 5, 2004

Phone: (505) 748-4347

OIL CONSERVATION DIVISION

Approved by:

ORIGINAL SIGNED BY  
PAUL F. KAUTZ  
PETROLEUM ENGINEER

Title:

Approval Date:

Expiration Date:

JUN 07 2004

Conditions of Approval:

Attached ☐

**Yates Petroleum Corporation  
Sohio AVR State #1 Re-entry  
1980' FSL and 1980' FWL  
Section 9-T10S-R32E  
Lea County, New Mexico  
Lease VA-2155**

**Drilling Plans:**

Yates Petroleum Corporation plans to re-enter this well with a pulling unit and reverse unit to drill out the cement plugs in the 9 5/8" casing to 3,450' then squeeze the San Andres perms w/300+/-sacks of cement. After the cement squeeze has been drilled out, the drillable plug @ 3,540' and cement plug in the bottom of the 9 5/8" casing @ 3,591' will be drilled out, then the rig will drill out the cement plugs in the 7 7/8" open hole to TD of 12,147'. Mud to be used in 9.5-9.8 ppg brine water, with a 55-70 viscosity. After reaching TD a new suite of open hole logs will be run, then a string of 5 1/2" casing will be run to bottom and cemented to 6,700'+\_/-.

The well will be completed with a pulling unit. Possible formations to be completed will be the Morrow sand @ 11,250'+/- or the Woodford sand @ 12,020'+/-.

BOPE PROGRAM: A 5,000# BOP will be installed on the 9 5/8" casing and tested daily.

**District II**  
811 South First, Artesia, NM 88210

**District III**  
**1000 Rio Brazos Rd., Aztec, NM 87410**

**District IV**  
**1220 S. St. Francis Dr., Santa Fe, NM 87505**

**OIL CONSERVATION DIVISION**  
1220 South St. Francis Dr.  
Santa Fe, NM 87505

**Submit to Appropriate District Office**  
**State Lease - 4 Copies**  
**Fee Lease - 3 Copies**

☐ AMENDED REPORT

**WELL LOCATION AND ACREAGE DEDICATION PLAT**

WELL LOCATION AND ACREAGE DEDICATION PLAT			
<sup>1</sup> API Number		<sup>2</sup> Pool Code	<sup>3</sup> Pool Name
			<b>Wildcat Devonian</b>
<sup>4</sup> Property Code	<sup>5</sup> Property Name		<sup>6</sup> Well Number
<b>26160</b>	<b>Sohio AVR State</b>		<b>1</b>
<sup>7</sup> OGRID No.	<sup>8</sup> Operator Name		<sup>9</sup> Elevation
<b>025575</b>	<b>Yates Petroleum Corporation</b>		<b>4360'</b>

## <sup>10</sup> Surface Location

UL or lot no.	Section	Township	Range	Lot Idn	Feet from the	North/South line	Feet from the	East/West line	County
<b>K</b>	<b>9</b>	<b>10S</b>	<b>32E</b>		<b>1980</b>	<b>South</b>	<b>1980</b>	<b>West</b>	<b>Lea</b>

<sup>11</sup> Bottom Hole Location If Different From Surface

11 Bottom Hole Location If Different From Surface									
UL or lot no.	Section	Township	Range	Lot Idn	Feet from the	North/South line	Feet from the	East/West line	County
12 Dedicated Acres <b>40</b>									
13 Joint or Infill		14 Consolidation Code		15 Order No.					

NO ALLOWABLE WILL BE ASSIGNED TO THIS COMPLETION UNTIL ALL INTERESTS HAVE BEEN CONSOLIDATED OR A NON-STANDARD UNIT HAS BEEN APPROVED BY THE DIVISION

NON-STANDARD UNIT HAS BEEN APPROVED BY THE DIVISION					
<b>16</b>					<b>17 OPERATOR CERTIFICATION</b> <i>I hereby certify that the information contained herein is true and complete to the best of my knowledge and belief.</i>  <hr/> Signature  <b>Clifton R. May</b> Printed Name  <b>Regulatory Agent</b> Title  <b>05/07/2004</b> Date
1980'	<div style="border: 2px solid black; width: 100px; height: 100px; margin: auto; position: relative;"> <span style="position: absolute; top: -20px; left: 50%; transform: translate(-50%, -50%); font-weight: bold;">VA-2155</span> <span style="position: absolute; bottom: -20px; left: 50%; transform: translate(-50%, -50%); writing-mode: vertical-rl; transform-origin: center;">1980'</span> </div>				<b>18 SURVEYOR CERTIFICATION</b> <i>I hereby certify that the well location shown on this plat was plotted from field notes of actual surveys made by me or under my supervision, and that the same is true and correct to the best of my belief.</i>  <b>REFER TO ORIGINAL PLAT</b>  Date of Survey  Signature and Seal of Professional Surveyor:   Certificate Number

**DISTRICT I**  
1626 E. French Dr., Hobbs, NM 88240

**DISTRICT II**  
811 South First, Artesia, NM 88210

**DISTRICT III**  
1000 Rio Brazos Rd., Aztec, NM 87410

**DISTRICT IV**  
2040 South Pacheco, Santa Fe, NM 87506

**State of New Mexico**  
Energy, Minerals and Natural Resources Department

Form C-102  
Revised March 17, 1999  
Instruction on back  
Submit to Appropriate District Office  
State Lease - 4 Copies  
Fee Lease - 3 Copies

**OIL CONSERVATION DIVISION**  
P.O. Box 2088  
Santa Fe, New Mexico 87504-2088

☐ AMENDED REPORT

**WELL LOCATION AND ACREAGE DEDICATION PLAT**

API Number	Pool Code	Pool Name Wildcat Devonian
Property Code	Property Name Sohio AVR State	Well Number 1
OCRD No. 025575	Operator Name Yates Petroleum Corporation	Elevation 4360'

**Surface Location**

UL or lot No. K	Section 9	Township 10S	Range 32 E	Lot Idn	Feet from the 1980'	North/South line South	Feet from the 1980'	East/West line West	County Lea
--------------------	--------------	-----------------	---------------	---------	------------------------	---------------------------	------------------------	------------------------	---------------

**Bottom Hole Location If Different From Surface**

UL or lot No.	Section	Township	Range	Lot Idn	Feet from the	North/South line	Feet from the	East/West line	County
Dedicated Acres 40	Joint or Infill	Consolidation Code	Order No.						

**NO ALLOWABLE WILL BE ASSIGNED TO THIS COMPLETION UNTIL ALL INTERESTS HAVE BEEN CONSOLIDATED  
OR A NON-STANDARD UNIT HAS BEEN APPROVED BY THE DIVISION**

	<p align="center"><b>OPERATOR CERTIFICATION</b></p> <p><i>I hereby certify that the information contained herein is true and complete to the best of my knowledge and belief.</i></p> <p align="right"><i>Clifton R. May</i></p> <p>Signature</p> <p>Clifton R. May</p> <p>Printed Name</p> <p>Regulatory Agent</p> <p>Title</p> <p>6-6-02</p> <p>Date</p>	
	<p align="center"><b>SURVEYOR CERTIFICATION</b></p> <p><i>I hereby certify that the well location shown on this plat was plotted from field notes of actual surveys made by me or under my supervision, and that the same is true and correct to the best of my belief.</i></p> <p align="center">Refer to Original Plat</p> <p>Date Surveyed 8-9-01</p> <p>Signature &amp; Seal of Professional Surveyor</p> <p align="center">JUN 2002 RECEIVED Hobbs DCD</p> <p>Certificate No. Herschel L. Jones SLS 3640</p> <p align="center">GENERAL SURVEYING COMPANY</p>	

**District I**

1625 N. French Dr., Hobbs, NM 88240

**District II**

811 South First, Artesia, NM 88210

**District III**

1000 Rio Brazos Rd., Aztec, NM 87410

**District IV**

2040 South Pacheco, Santa Fe, NM 87505

State of New Mexico  
Energy, Minerals & Natural ResourcesOIL CONSERVATION DIVISION  
2040 South Pacheco  
Santa Fe, NM 87505Form C-102  
Revised March 17, 1999Submit to Appropriate District Office  
State Lease - 4 Copies  
Fee Lease - 3 Copies☐ AMENDED REPORT

## WELL LOCATION AND ACREAGE DEDICATION PLAT

API Number <b>3D-025-00012</b>		Pool Code	Pool Name <b>Wildcat Devonian</b>
Property Code <b>2616D</b>	Property Name <b>Sohio AVR State</b>		Well Number <b>1</b>
OGRID No. <b>025575</b>	Operator Name <b>Yates Petroleum Corporation</b>		Elevation <b>4360'</b>

<sup>10</sup> Surface Location

UL or lot no.	Section	Township	Range	Lot Idn	Feet from the	North/South line	Feet from the	East/West line	County
K	9	10S	32-E		1980'	South	1980'	West	Lea

<sup>11</sup> Bottom Hole Location If Different From Surface

UL or lot no.	Section	Township	Range	Lot Idn	Feet from the	North/South line	Feet from the	East/West line	County

Dedicated Acres <b>40</b>	Joint or Infill	Consolidation Code	Order No.
------------------------------	-----------------	--------------------	-----------

NO ALLOWABLE WILL BE ASSIGNED TO THIS COMPLETION UNTIL ALL INTERESTS HAVE BEEN CONSOLIDATED OR A  
NON-STANDARD UNIT HAS BEEN APPROVED BY THE DIVISION

	<sup>17</sup> OPERATOR CERTIFICATION I hereby certify that the information contained herein is true and complete to the best of my knowledge and belief. Hobbs OCD
	Signature: <i>Ken Beardemphl</i> Printed Name: <b>Ken Beardemphl</b> Title: <b>Landman</b> Date: <b>July 6, 2000</b>
	<sup>18</sup> SURVEYOR CERTIFICATION I hereby certify that the well location shown on this plat was plotted from field notes of actual surveys made by me or under my supervision, and that the same is true and correct to the best of my belief.
	Date of Survey Signature and Seal of Professional Surveyor:  <b>REFER TO ORIGINAL PLAT</b>

Certificate Number

N. MEXICO OIL CONSERVATION COMMISSION

Well Location and Acreage Dedication Plat

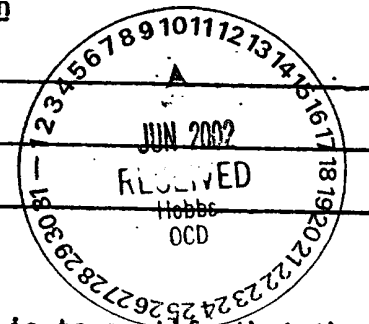
Section A.

Operator Sohio Petroleum Company Lease 1958 State 5 AM 10:44 ADJ  
Well No. 1 Unit Letter K Section 9 Township 10-S Range 32-E NMPA  
Located 1980 Feet From West Line, 1980 Feet From South Line  
County Lea G. L. Elevation 4360 Ft. Dedicated Acreage 40 Acres  
Name of Producing Formation Devonian Pool Wildcat

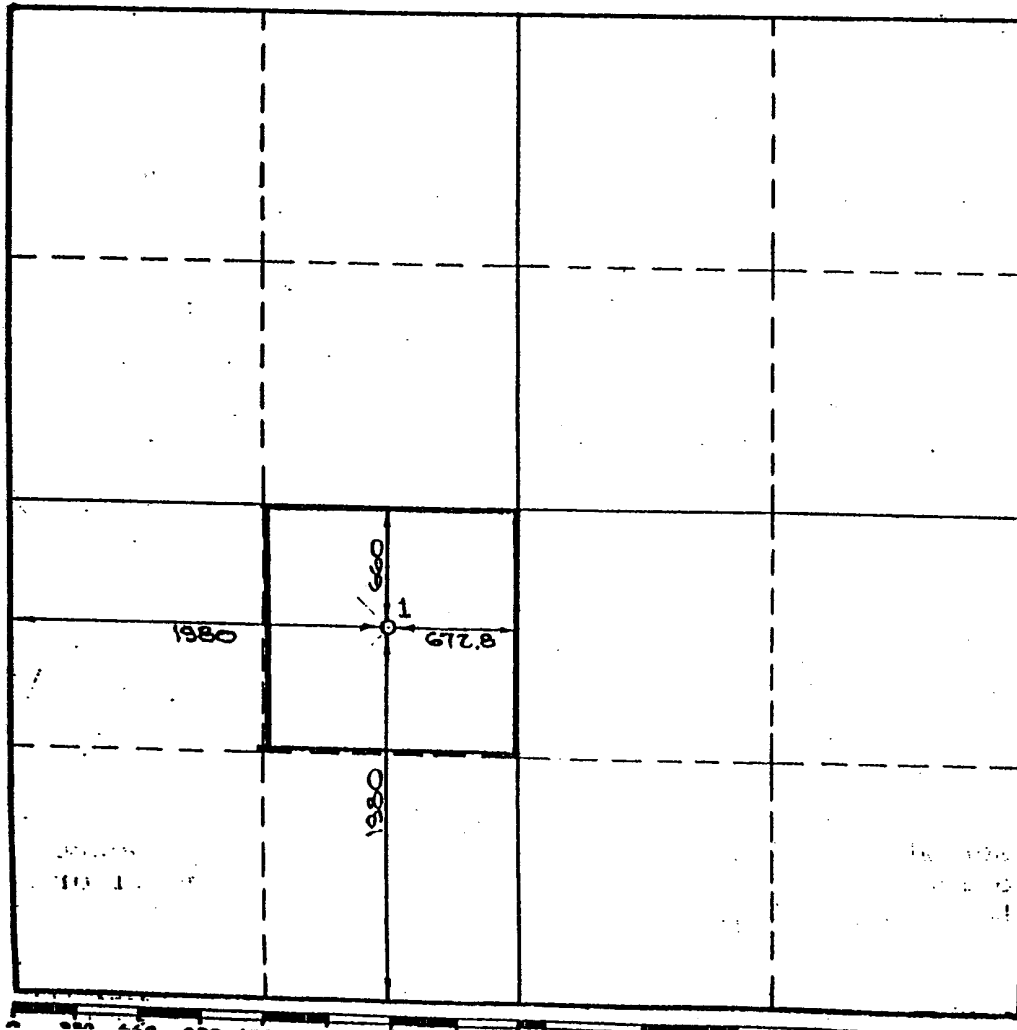
1. Is the Operator the only owner\* in the dedicated acreage outlined on the plat below?  
Yes X No
2. If the answer to question one is "no," have the interests of all the owners been consolidated by communitization agreement or otherwise? Yes        No        If answer is "yes," Type of Consolidation
3. If the answer to question two is "no," list all the owners and their respective interests below:

Owner

Land Description



Section B



This is to certify that the information in Section A above is true and complete to the best of my knowledge and belief.

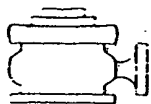
Sohio Petroleum Company  
(Operator)

A. K. Hood  
(Representative)

Box 3167 - Midland, Texas  
Address

This is to certify that the well location shown on the plat in Section B was plotted from field notes of actual surveys made by me or under my supervision and that the same is true and correct to the best of my knowledge and belief.

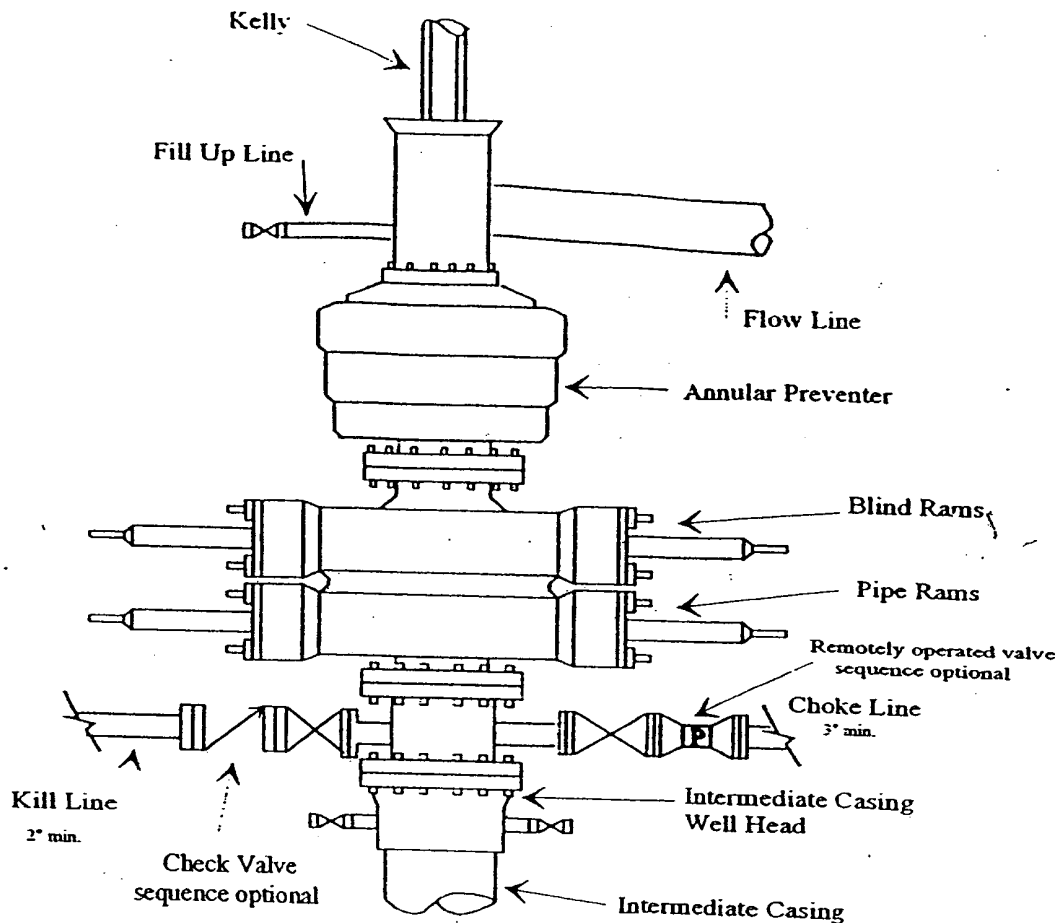
Date Surveyed 1 DEC. 1958  
Registered Professional  
Engineer and/or Land Surveyor.



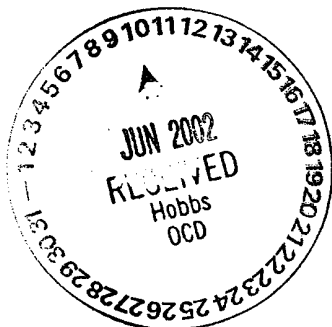
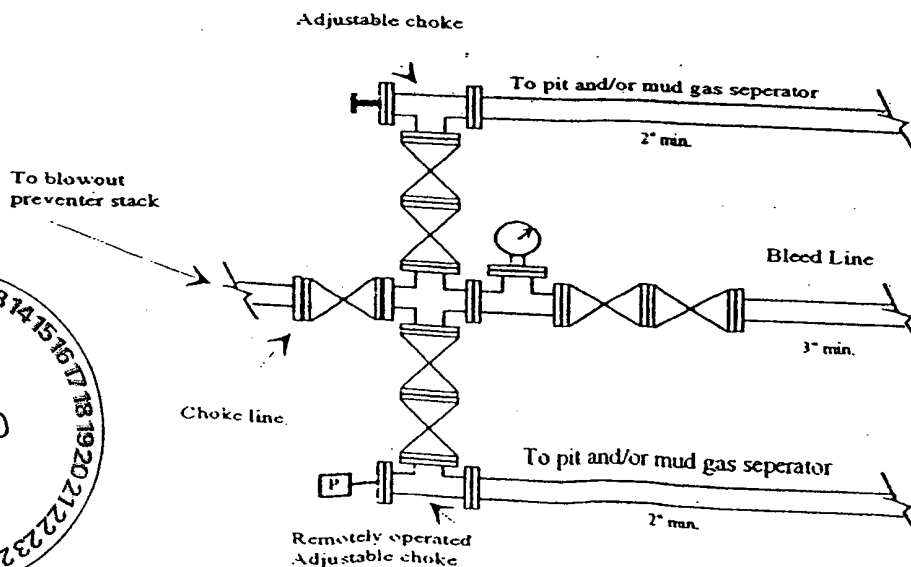
# Yates Petroleum Corporation

BOP-4

## Typical 5,000 psi Pressure System Schematic Annular with Double Ram Preventer Stack



## Typical 5,000 psi choke manifold assembly with at least these minimum features

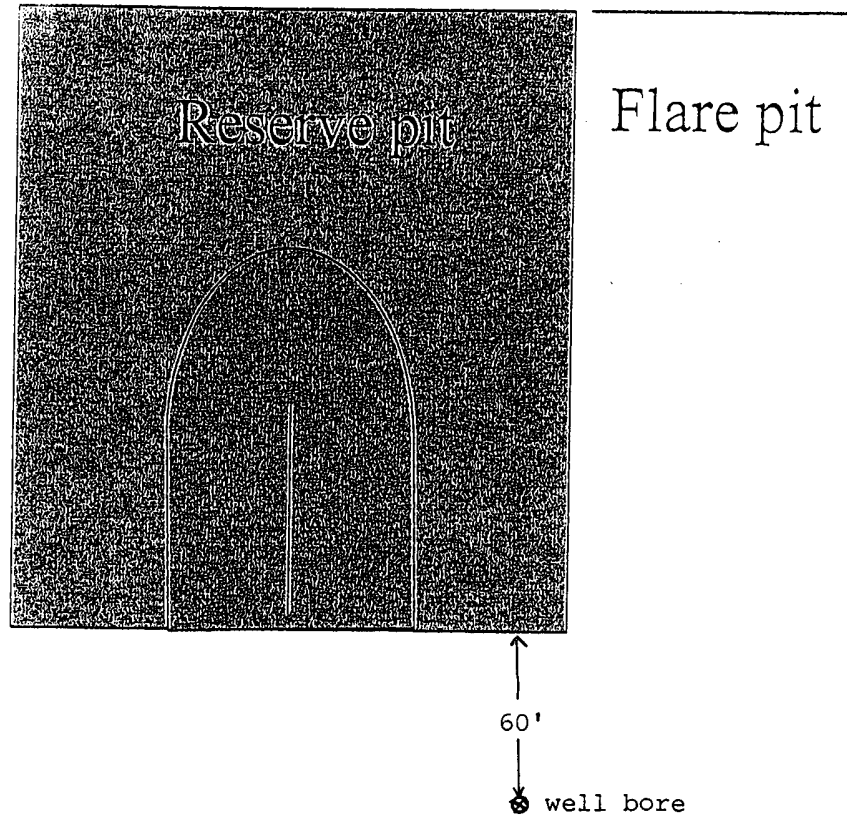


**Signature**



YATES PETROLEUM CORPORATION  
General Plan was approved 4/15/04

The reserve pit will be to the North.  
The Southeast Corner of the pit will  
be approximately 60' North of the well  
bore. The pit will be a 150' X 150'  
and 5' deep with a capacity of 20,000  
bbls.



Standard reserve pit. All Reserve pits are double  
Horse shoe size varies with depth of well