

DISTRICT I

1625 N. French Dr., Hobbs, NM 88240

DISTRICT II

811 South First, Artesia, NM 88210

DISTRICT III

1000 Rio Brazos Rd., Aztec, NM 87410

DISTRICT IV

1220 South St. Francis Dr., Santa Fe, NM 87505

OIL CONSERVATION DIVISION
1220 South St. Francis Drive
Santa Fe, NM 87505

WELL APINO.

30-025-36141

5. Indicate Type of Lease

☐ STATE☒ FEE

6. State Oil & Gas Lease No.

WELL COMPLETION OR RECOMPLETION REPORT AND LOG

1a. Type of Well:

☐ OIL WELL☐ GAS WELL☐ DRY☒ OTHER

b. Type of Completion:

SWD-871

☒ New Well☐ Workover☐ Deepen☐ Plug Back☐ Diff. Resvr.☐ Other

2. Name of Operator

Apache Corporation

8. Well No.

Southland Royalty A

3. Address of Operator

6120 S. Yale, Suite 1500 Tulsa, OK 74136 (918)-491-4957

9. Pool name or Wildcat

Penrose Skelly, Grayburg (50350)

4. Well Location

Unit Letter Q 2460 Feet From The South Line and 990 Feet From The East Line
Section 4 Township 21S Range 37E NMPM Lea County

10. Date Spudded

2/9/03

11. Date T.D. Reached

2/15/03

12. Date Compl. (Ready to Prod.)

3/2/03

13. Elevations (DF& RKB, RT, GR, etc.)

3469'

14. Elev. Casinghead

GR

15. Total Depth

4150'

16. Plug Back T.D.

4103'

17. If Multiple Compl. How

Many Zones?

18. Intervals

Drilled By

Rotary Tools

X

Cable Tools

19. Producing Interval(s), of this completion - Top, Bottom, Name

Grayburg 3981 - 4014

20. Was Directional Survey Made

NO

21. Type Electric and Other Logs Run

CZ-CNL-GR, DL-GR

22. Was Well Cored

NO

CASING RECORD (Report all strings set in well)

CASING SIZE	WEIGHT LB./FT.	DEPTH SET	HOLE SIZE	CEMENTING RECORD	AMOUNT PULLED
8-5/8	24#	412	12-1/4	325 sx / Circulated 93 sx	
5-1/2	17#	4150	7-7/8	750 sx / Circulated 126 sx	

24. LINER RECORD

SIZE	TOP	BOTTOM	SACKS CEMENT	SCREEN

25. TUBING RECORD

SIZE	DEPTH SET	PACKER SET
2-7/8		3838'

26. Perforation record (interval, size, and number)

Grayburg - 3981-85, 3989-94, 3996-4001, 4004-07, 4010-14
4 JSPFGrayburg - 3895-3900, 3910-14, 3916-20, 3931-36, 3938-43,
3949-54, 3968-72 4 JSPF = 135 Holes

27. ACID, SHOT, FRACTURE, CEMENT, SQUEEZE, ETC.

DEPTH INTERVAL	AMOUNT AND KIND MATERIAL USED
3981-4014	Acidized w/ 1,250 gals 15% HCL
3895-3972	Acidized w/ 1,750 gals 15% HCL

28. PRODUCTION

Date First Production 3/2/03	Production Method (Flowing, gas lift, pumping - Size and type pump) Disposing					Well Status (Producing, shut-in) Disposal
Date of Test	Hours Tested	Choke Size	Prod'n For Test Period	Oil - Bbl.	Gas - MCF	Water - Bbl.
Flow Tubing Press.	Casing Pressure	Calculated 24- Hour Rate	Oil - Bbl.	Gas - MCF	Water - Bbl.	Oil Gravity - API - (Corr.)

29. Disposition of Gas (Sold, used for fuel, vented, etc.)

Test Witnessed By

Apache Corporation

30. List Attachments

Log, Deviation Report, C-104

31. I hereby certify that the information shown on both sides of this form is true and complete to the best of my knowledge and belief

Signature

Kara Coday

Printed
Name

Kara Coday

Title Sr. Engineering Technician

Date 4/4/03

INSTRUCTIONS

This form is to be filed with the appropriate District Office of the Division Office not later than 20 days after the completion of any newly-drilled or deepened well. It shall be accompanied by one copy of all electrical and radio-activity logs run on the well and a summary of all special tests conducted, including drill stem tests. All depths reported shall be measured depths. In the case of directionally drilled wells, true vertical depths shall also be reported. For multiple completions, items 25 through 29 shall be reported for each zone. The form is to be filed in quintuplicate except on state land, where six copies are required. See Rule 1105.

INDICATE FORMATION TOPS IN CONFORMANCE WITH GEOGRAPHICAL SECTION OF STATE

Southeastern New Mexico

Northwestern New Mexico

T. Anhy		T. Canyon		T. Ojo Alamo		T. Penn. "B"	
T. Salt		T. Strawn		T. Kirtland-Fruitland		T. Penn. "C"	
B. Salt		T. Atoka		T. Pictured Cliffs		T. Penn. "D"	
T. Yates	2615	T. Miss		T. Cliff House		T. Leadville	
T. 7 Rivers	2865	T. Devonian		T. Menefee		T. Madison	
T. Queen	3437	T. Silurian		T. Point Lookout		T. Elbert	
T. Grayburg	3775	T. Montoya		T. Mancos		T. McCracken	
T. San Andres	4022	T. Simpson		T. Gallup		T. Ignacio Otzte	
T. Glorieta		T. McKee		Base Greenhorn		T. Granite	
T. Paddock		T. Ellenburger		T. Dakota		T.	
T. Blinberry		T. Gr. Wash		T. Morrison		T.	
T. Tubb		T. Delaware Sand		T. Todilto		T.	
T. Drinkard		T. Bone Springs		T. Entrada		T.	
T. Abo		T. Rustler	1299	T. Wingate		T.	
T. Wolfcamp		T.		T. Chinle		T.	
T. Penn		T.		T. Permian		T.	
T. Cisco (Bough C)		T.		T. Penn "A"		T.	

OIL OR GAS SANDS OR ZONES

No. 1, from to No. 3, from to
No. 2, from to No. 4, from to

IMPORTANT WATER SANDS

Include data on rate of water inflow and elevation to which water rose in hole.

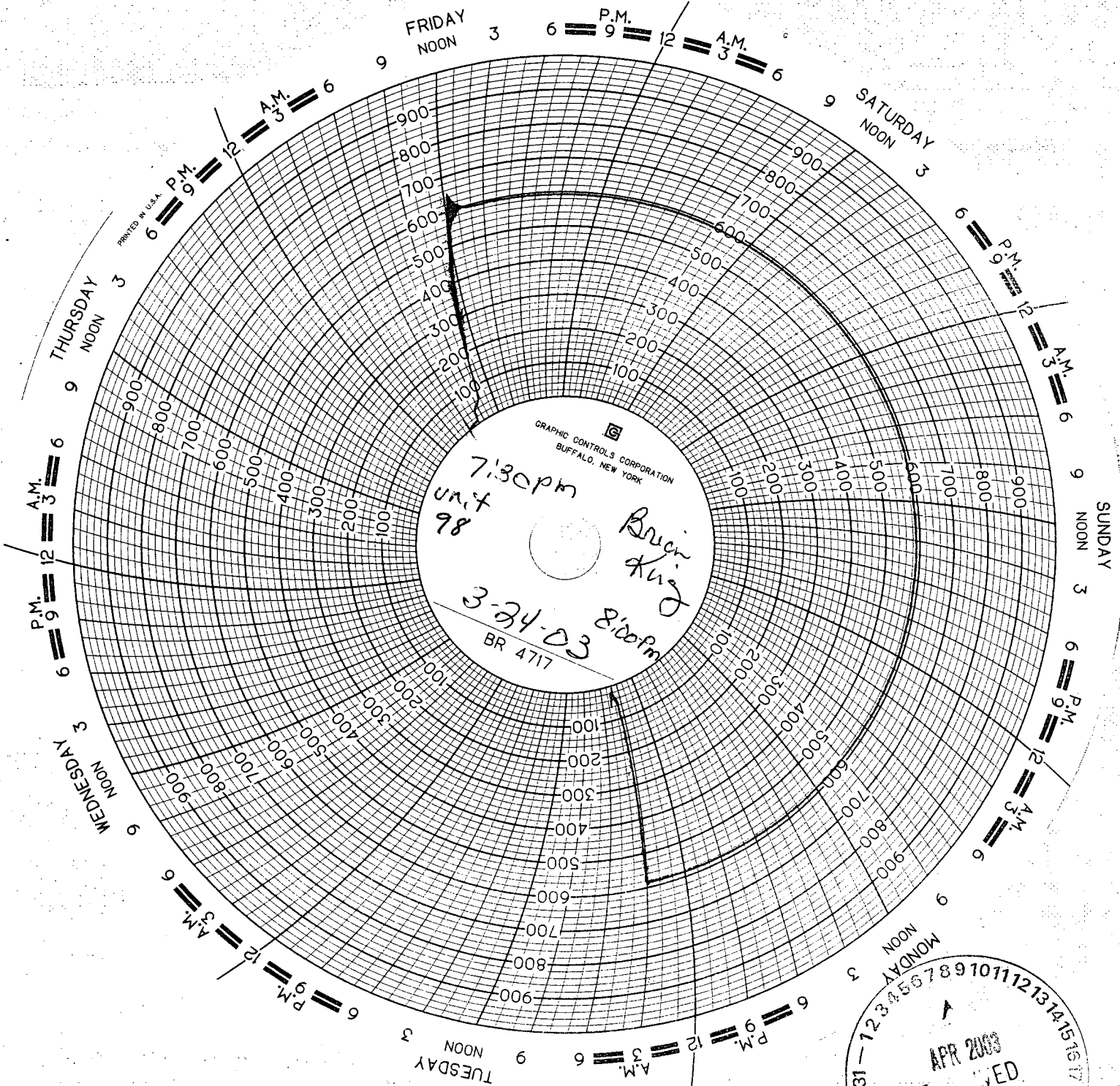
No. 1, from to feet

No. 2, from to feet

No. 3, from to feet

LITHOLOGY RECORD (Attach additional sheet if necessary)

From	To	Thickness in Feet	Lithology



APR 2003
RECEIVED
Hobbs
OCD

12345678910111213141516171819202122232425262728293031