

Submit 3 Copies To Appropriate District Office  
 District I  
 1625 N. French Dr., Hobbs, NM 88240  
 District II  
 1301 W. Grand Ave., Artesia, NM 88210  
 District III  
 1000 Rio Brazos Rd., Aztec, NM 87410  
 District IV  
 1220 S. St. Francis Dr., Santa Fe, NM 87505

State of New Mexico  
 Energy, Minerals and Natural Resources

OIL CONSERVATION DIVISION  
 1220 South St. Francis Dr.  
 Santa Fe, NM 87505

Form C-103  
 March 4, 2004

WELL API NO. <b>30-025-35189</b>
5. Indicate Type of Lease STATE <input checked="" type="checkbox"/> FEE <input type="checkbox"/>
6. State Oil & Gas Lease No. <b>017643</b>
7. Lease Name or Unit Agreement Name <b>West Maljamar</b>
8. Well Number <b>7-1</b>
9. OGRID Number
10. Pool name or Wildcat <b>Leamex, Northwest (Wolfcamp)</b>

SUNDRY NOTICES AND REPORTS ON WELLS  
 (DO NOT USE THIS FORM FOR PROPOSALS TO DRILL OR TO DEEPEN OR PLUG BACK TO A DIFFERENT RESERVOIR. USE "APPLICATION FOR PERMIT" (FORM C-101) FOR SUCH PROPOSALS.)

1. Type of Well:  
 Oil Well ☒ Gas Well ☐ Other ☐

2. Name of Operator  
**ConocoPhillips Company ATTN: Celeste Dale**

3. Address of Operator  
**4001 Penbrook, Odessa, TX 79762**

4. Well Location

Unit Letter J : 1,669 feet from the South line and 1,422 feet from the East line

Section 7 Township 17-S Range 33-E NMPM Lea County

11. Elevation (Show whether DR, RKB, RT, GR, etc.)  
**4,217' GL**

Pit or Below-grade Tank Application (For pit or below-grade tank closures, a form C-144 must be attached)

Pit Location: UL J Sect 7 Twp 17-S Rng 33-E Pit type steel Depth to Groundwater 197' Distance from nearest fresh water well N/A

Distance from nearest surface water N/A Below-grade Tank Location UL        Sect        Twp        Rng        ;

       feet from the        line and        feet from the        line **using steel pit on location**

12. Check Appropriate Box to Indicate Nature of Notice, Report or Other Data

NOTICE OF INTENTION TO:

PERFORM REMEDIAL WORK ☐ PLUG AND ABANDON ☒

TEMPORARILY ABANDON ☐ CHANGE PLANS ☐

PULL OR ALTER CASING ☐ MULTIPLE COMPLETION ☐

OTHER: ☐

SUBSEQUENT REPORT OF:

REMEDIAL WORK ☐ ALTERING CASING ☐

COMMENCE DRILLING OPNS. ☐ PLUG AND ABANDONMENT ☐

CASING TEST AND CEMENT JOB ☐

OTHER: ☐

13. Describe proposed or completed operations. (Clearly state all pertinent details, and give pertinent dates, including estimated date of starting any proposed work). SEE RULE 1103. For Multiple Completions: Attach wellbore diagram of proposed completion or recompletion.

See attached current wellbore diagram, proposed plugging procedure & wellbore diagram

I hereby certify that the information above is true and complete to the best of my knowledge and belief. I further certify that any pit or below-grade tank has been/will be constructed or placed according to NMOCD guidelines ☐, a general permit ☐ or an (attached) alternative OCD-approved plan ☐.

SIGNATURE  TITLE Petroleum Engineer DATE 06/10/04

Type or print name James F. Newman, P.E. E-mail address: jim@triplenservices.com Telephone No. 432-687-1994

(This space for State use)

APPROVED BY  TITLE FIELD REPRESENTATIVE II/STAFF MANAGER DATE       

Conditions of approval, if any:

JUN 10 2004

**ConocoPhillips****Proposed Plugging Procedure**

**West Maljamar 7 #1  
Leamex, Northwest (Wolfcamp) Field  
Lea County, New Mexico**

TO: GARY WINK

5 pages

call w/ questions  
800-677-1635  
Thanks

**See attached wellbore diagrams for wellbore configuration**

TA'd w/ CIBP/cmt @ 9,970'. Water flows in 5½" casing & 5½ x 9½" annulus. Currently open, flowing back to frac tank to avoid pressure build up. Tight spot in 5½" casing at +/- 2,315' has required swaging. CICR in hole @ +/- 6,200' (from Paddock squeeze)

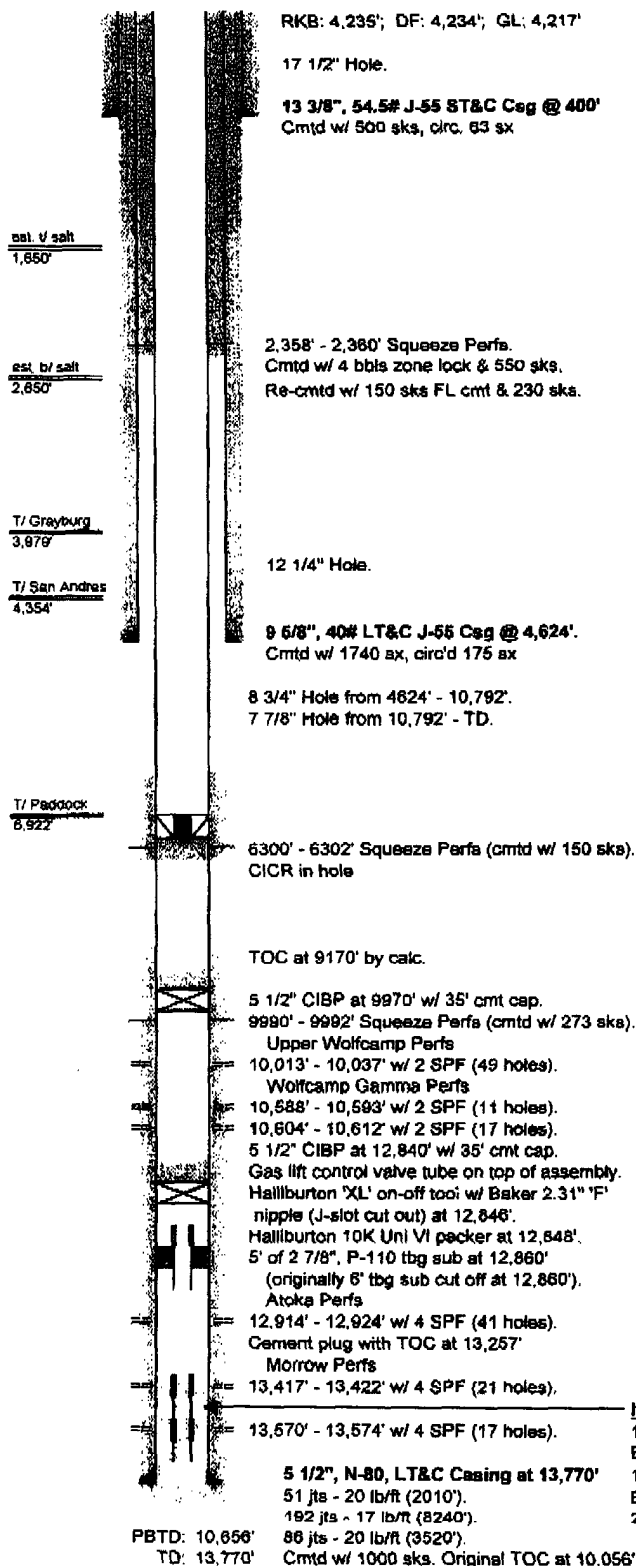
- Notify OCD 48 hrs prior to move in, and 4 hrs prior to plugs
  - Hold daily tailgate safety meetings w/ crews
  - Contact Digress (1-800-344-8377) minimum 48 hrs prior to move-in
1. Deliver 9,900' 2½" workstring.
  2. MIRU plugging equipment. ND wellhead and NU 6" 3,000# manual BOP.
  3. RIH w/ workstring, tag CICR @ +/- 6,200'. RU reverse unit and drill out CICR & cmt across Paddock 6,200 – 6,302'. POOH w/ drill string, lay down drill collars.
  4. RIH w/ workstring, tag PBTD @ +/- 9,935'. RU cementer and circulate hole w/ plugging mud.
  5. POOH w/ tbg to 7,900' and pump 25 sx C cement 7,900 – 7,800'. **Abo plug**
  6. POOH w/ tbg to 5,977'. Pump 25 sx C cement 5,977 – 5,877'. **Paddock plug**
  7. RU lubricator and RIH w/ wireline, perforate 5½" casing w/ four 1-11/16" link-jet charges @ 4,674'. POOH w/ wireline. RIH w/ wireline, perforate 5½" casing w/ four 1-11/16" link-jet charges @ 3,979'. POOH w/ wireline.
  8. RIH w/ 5½" cement retainer to 4,574'. Load hole and set retainer @ 4,574'. Establish rate into perforations, taking returns in 2½ x 5½" annulus and squeeze 85 sx C cement 4,674 – 4,574'. **Intermediate shoe plug**
  9. RU lubricator and RIH w/ wireline, perforate 9½" casing w/ four 3½" strip-jet charges @ 3,979'. POOH w/ wireline, RD lubricator.
  10. RIH w/ 5½" cement retainer to 3,879'. Load hole and set retainer @ 3,879'. Establish rate into perforations and squeeze 100 sx C cement 3,979 – 3,879'. **Top of Grayburg plug**
  11. RU lubricator and RIH w/ wireline, perforate 5½" & 9½" casings w/ four 3½" strip-jet charges @ 2,750'. POOH w/ wireline, RD lubricator.



**West Maljamar 7 #1  
Leamex, Northwest (Wolfcamp) Field  
Lea County, New Mexico**

12. RIH w/ 5½" cement retainer to 2,650'. Load hole and set retainer @ 2,650'. Establish rate into perforations and squeeze 90 sx C cement 2,750 – 2,650'. **Base of salt plug**
13. Verify no flow on 5½" casing. If flow present, RIH w/ packer and isolate source.
14. RU lubricator and RIH w/ wireline, perforate 5½" & 9%" casings w/ four 3½" strip-jet charges @ 1,650'. POOH w/ wireline, RD lubricator.
15. RIH w/ 5½" AD-1 packer to 1,550'. Load hole and set packer, establish rate into perforations and observe casing annuli for communication. Squeeze 90 sx C cement w/ 2% CaCl<sub>2</sub> 1,650 – 1,550'. **Top of salt plug - WOC & TAG**
16. Pressure-test 5½" casing to 1,000 psi. Verify no flow on 5½" casing, 5½ x 9%" annulus, or 9% x 13%" annulus.
17. RU lubricator and RIH w/ wireline, perforate 5½" & 9%" casings w/ four 3½" strip-jet charges @ 450'. POOH w/ wireline, RD lubricator.
18. RIH w/ 5½" AD-1 packer to 300'. Load hole and set packer, establish rate into perforations with returns in 5½ x 9%" and 9% x 13%" annuli and squeeze 115 sx C cement as needed to circulate cement in 5½ x 9%" and 9% x 13%" annuli, displacing cement to 350'. **Surface casing shoe plug – WOC & TAG**
19. RU lubricator and RIH w/ wireline, perforate 5½" & 9%" casings w/ four 3½" strip-jet charges @ 50'. POOH w/ wireline, RD lubricator.
20. ND wellhead and NU BOP, establish circulation and circulate 25 sx C cement 50' to surface. **Surface plug**
21. Cut off wellhead and anchors, install dry hole marker. Level location. Leave location clean and free of trash.

# ConocoPhillips - Permian Basin Area May 24, 2004



Lease &amp; Well No.:

West Maljamar 7 #1

Well Category:

One

Area:

New Mexico

Subarea:

Maljamar

Field:

Leamex, Northeast (Wolfcamp)

API Number:

30-025-35189

Legal Description:

1669' FSL & 1422' FEL  
Sec. 7, T-17-S, R-33-E  
Lea County, New Mexico

Spudded:

12/04/2000

Completed:

04/18/2001

## Well History:

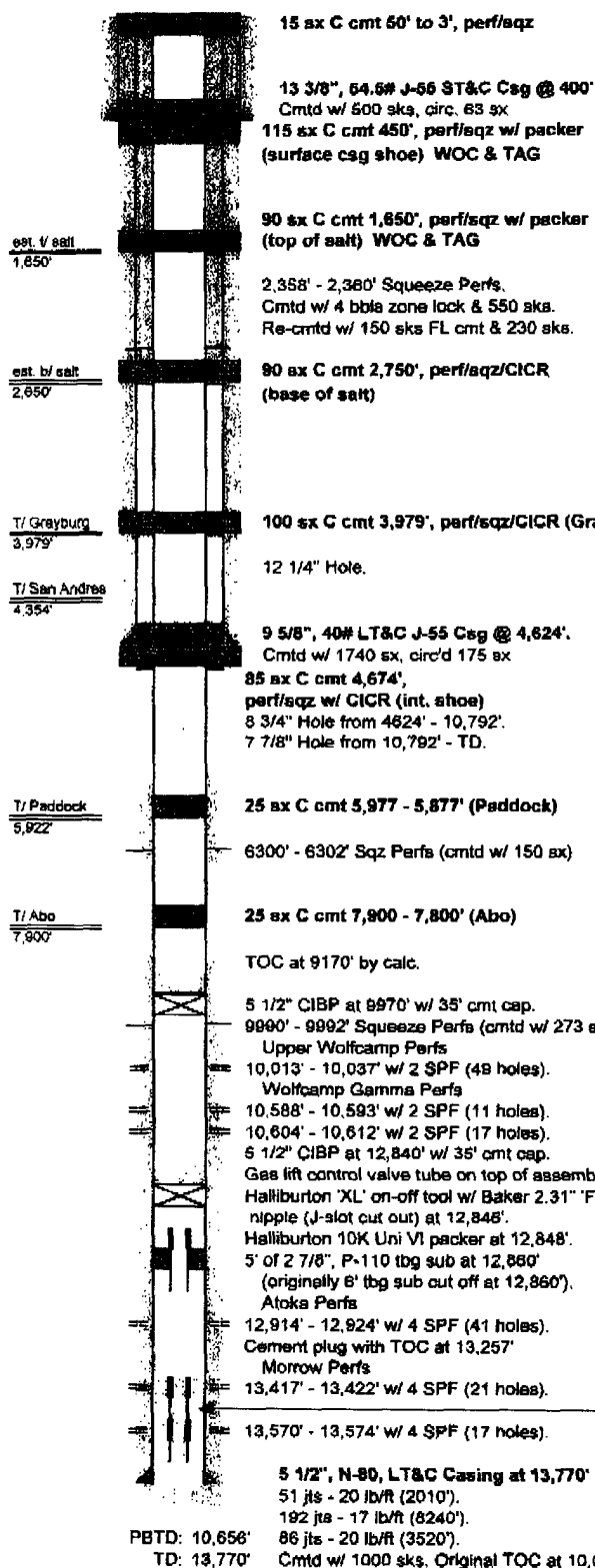
4/04 Retr RBP at 10,656'. Set CIBP at 12,840' & cap w/ 35' cmt. Set CIBP at 9970' & cap w/ 35' cmt. Perfd 9 sqz holes at 6300-02'. Csg P incr to 1200#. Intern csg P 1100#. Wtr analysis ind 195,000 ppm Chlorides. RIH w/ cmt ret. Hit tight spot at 2315'. Worked thru tight spot w/ 4 5/8" swage. RIH w/ 4 1 1/8" swage. Hit tight spot at 2314'. Worked thru tight spot. RIH w/ 4 1/2" swage. No restriction. Set cmt ret at 6243'. Pmpd 150 sx cmt. Temperature survey ind water flow behind csg from 2320-60'. Perfd 9 sqz holes at 2358-60'. Set cmt ret at 2255'. Pmpd 4 bbls zone lock & 550 sx Cl C cmt. DO cmt 2248-2365'. Water flow resumed. Set cmt ret at 2255'. Pmpd 150 sx CL C fluid loss cmt & 230 sx Cl C cmt. DO cmt 2248-2358'. Water flow resumed.

## Items cut off & dropped to bottom on 4/18/2001:

1' of 2 7/8", P-110 tbg sub.  
Baker 2.25" 'F' nipple.  
10', 2 7/8", P-110 tbg sub  
Baker 2.25" 'R' nipple.  
2 7/8" wireline reentry guide.

## ConocoPhillips - Permian Basin Area

June 1, 2004



Lease &amp; Well No.:

West Maljamar 7 #1

Well Category:

One

Area:

New Mexico

Subarea:

Maljamar

Field:

Leamex, Northeast (Wolfcamp)

API Number:

30-025-35189

Legal Description:

1669' FSL & 1422' FEL  
Sec. 7, T-17-S, R-33-E  
Lea County, New Mexico

Spudded:

12/04/2000

Completed:

04/18/2001

## Well History (post-Wolfcamp completion):

4/04 Retr RBP at 10,656'. Set CIBP at 12,840' & cap w/ 35' cmt. Set CIBP at 9970' & cap w/ 35' cmt. Perf'd 9 sqz holes at 6300-02'. Csg P incr to 1200#. Interm csg P 1100#. Wtr analysis ind 195,000 ppm Chlorides. RIH w/ cmt ret. Hit tight spot at 2315'. Worked thru tight spot w/ 4 5/8" swage. RIH w/ 4 1 1/8" swage. Hit tight spot at 2314'. Worked thru tight spot. RIH w/ 4 1/2" swage. No restriction. Set cmt ret at 6243'. Pmp'd 150 sx cmt. Temperature survey ind water flow behind csg from 2320-50'. Perf'd 9 sqz holes at 2358-60'. Set cmt ret at 2255'. Pmp'd 4 bbls zone lock & 550 sx CI C cmt. DO cmt 2248-2365'. Water flow resumed. Set cmt ret at 2255'. Pmp'd 150 sx CL C fluid loss cmt & 230 sx CI C cmt. DO cmt 2248-2358'. Water flow resumed.

## Proposed Plugs:

- 1) Drill out CICR @ +/- 6,200'
- 2) 25 sx C cmt 7,900 - 7,800' (Abo)
- 3) 25 sx C cmt 5,977 - 5,877' (Paddock)
- 4) 85 sx C cmt 4,674', perf/sqz w/ CICR (int. shoe)
- 5) 100 sx C cmt 3,979', perf/sqz w/ CICR (Grayburg)
- 6) 90 sx C cmt 2,750', perf/sqz w/ packer (base of salt)
- 7) 90 sx C cmt 1,650', perf/sqz w/ packer (top of salt) TAG
- 8) 115 sx C cmt 450', perf/sqz w/ packer (surface csg shoe)
- 9) 25 sx C cmt 50' to surface, perf/sqz (surface plug)

## Items cut off &amp; dropped to bottom on 4/18/2001:

- 1' of 2 7/8", P-110 tbg sub.
- Baker 2.25" 'F' nipple.
- 10', 2 7/8", P-110 tbg sub
- Baker 2.25" 'R' nipple.
- 2 7/8" wireline reentry guide.