

DISTRICT I

P.O. Box 1980, Hobbs, NM 88241-1980

DISTRICT II

P.O. Box Drawer DD, Artesia, NM 88211-0719

DISTRICT III

1000 Rio Brazos Rd., Aztec, NM 87410

DISTRICT IV

P.O. Box 2088, Santa Fe, NM 87504-2088

State of New Mexico

Energy, Minerals and Natural Resources Department

Form C-102

Revised February 10, 1994

Instructions on back

Submit to Appropriate District Office

State Lease - 4 Copies

Fee Lease - 3 Copies

☒ AMENDED REPORT

OIL CONSERVATION DIVISION

P.O. Box 2088

Santa Fe, New Mexico 87504-2088

WELL LOCATION AND ACREAGE DEDICATION PLAT

¹ API Number 30-025-30754	² Pool Code 62180	³ Pool Name Vacuum Grayburg San Andres
⁴ Property Code 30022	⁵ Property Name Vacuum Grayburg San Andres Unit	
⁷ OGRID Number 022351	⁸ Operator Name TEXACO EXPLORATION & PRODUCTION INC.	⁶ Well No. 138
		⁹ Elevation 4015' GR

¹⁰ Surface Location

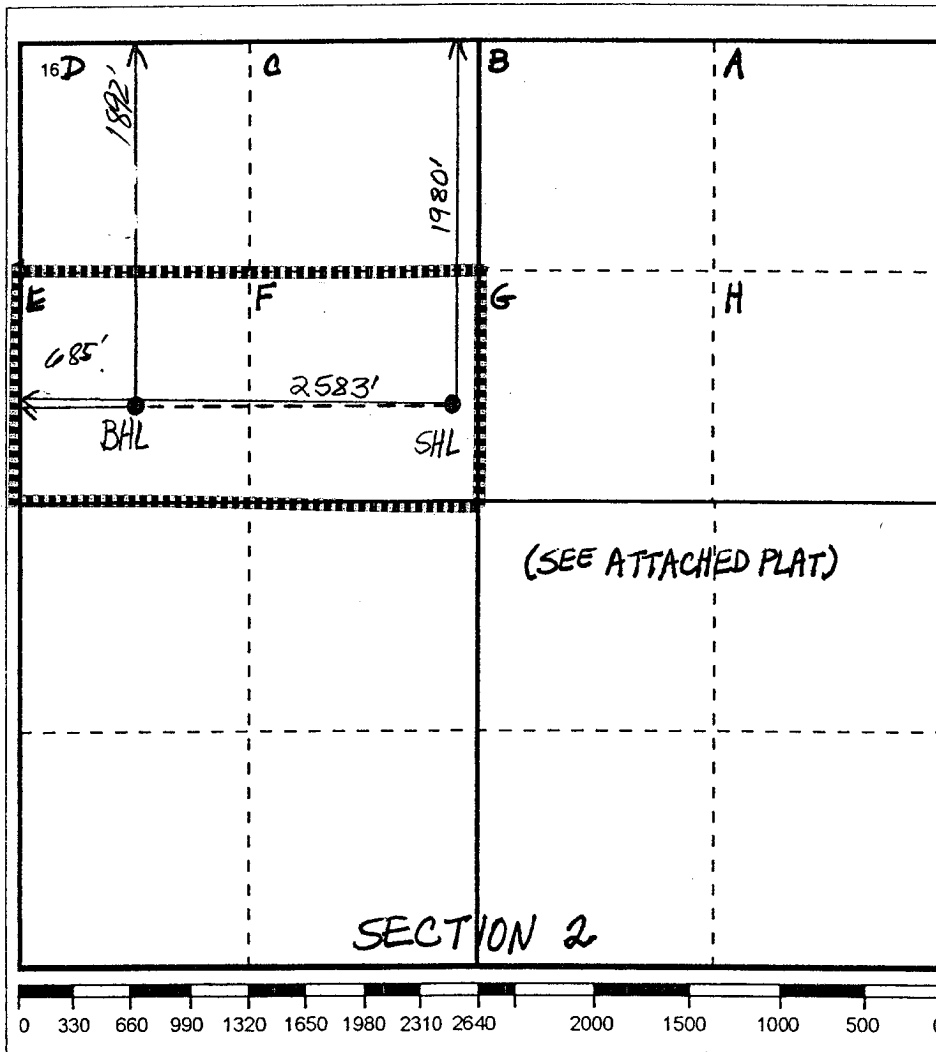
Ul or lot no.	Section	Township	Range	Lot.Idn	Feet From The	North/South Line	Feet From The	East/West Line	County
F	2	18S	34E		1980	North	2583	West	Lea

¹¹ Bottom Hole Location If Different From Surface

Ul or lot no.	Section	Township	Range	Lot.Idn	Feet From The	North/South Line	Feet From The	East/West Line	County
E	2	18S	34E		1992	North	685'	West	Lea

¹² Dedicated Acres 80	¹³ Joint or Infill No	¹⁴ Consolidation Code	¹⁵ Order No.
-------------------------------------	-------------------------------------	----------------------------------	-------------------------

NO ALLOWABLE WILL BE ASSIGNED TO THIS COMPLETION UNTIL ALL INTERESTS HAVE BEEN CONSOLIDATED
OR A NON-STANDARD UNIT HAS BEEN APPROVED BY THE DIVISION

¹⁷ OPERATOR CERTIFICATION

I hereby certify that the information
contained herein is true and complete to the
best of my knowledge and belief

Signature

Laura Skinner

Printed Name

Laura Skinner

Position

Regulatory Specialist

Date

3/9/2004, 6/01/04

¹⁸ SURVEYOR CERTIFICATION

I hereby certify that the well location shown
on this plat was plotted from field notes of
actual surveys made by me or under my
supervision, and that the same is true and
correct to the best of my knowledge and
belief.

Date Surveyed

Signature & Seal of

Professional Surveyor

Certificate No.