

DISTRICT I  
1625 N. French Dr., Hobbs, NM 88240

DISTRICT II  
1301 W. Grand Avenue, Artesia, NM 88210

DISTRICT III  
1000 Rio Brazos Rd., Aztec, NM 87410

DISTRICT IV  
1220 S. St. Francis Dr., Santa Fe, NM 87505

State of New Mexico

Energy, Minerals, and Natural Resources Department

OIL CONSERVATION DIVISION

1220 South St. Francis Dr.

Santa Fe, New Mexico 87505

Form C-102

Revised August 15, 2000

Submit to Appropriate District Office

State Lease - 4 copies

Fee Lease - 3 copies

☒ AMENDED REPORT

WELL LOCATION AND ACREAGE DEDICATION PLAT

<sup>1</sup> API Number 30-025-36374	<sup>2</sup> Pool Code 57000	<sup>3</sup> Pool Name Skaggs; Drinkard
<sup>4</sup> Property Code 23723	<sup>5</sup> Property Name KAREN "1" STATE	<sup>6</sup> Well Number 1
<sup>7</sup> OGRID No. 023230	<sup>8</sup> Operator Name MATADOR OPERATING COMPANY	<sup>9</sup> Elevation 3586'

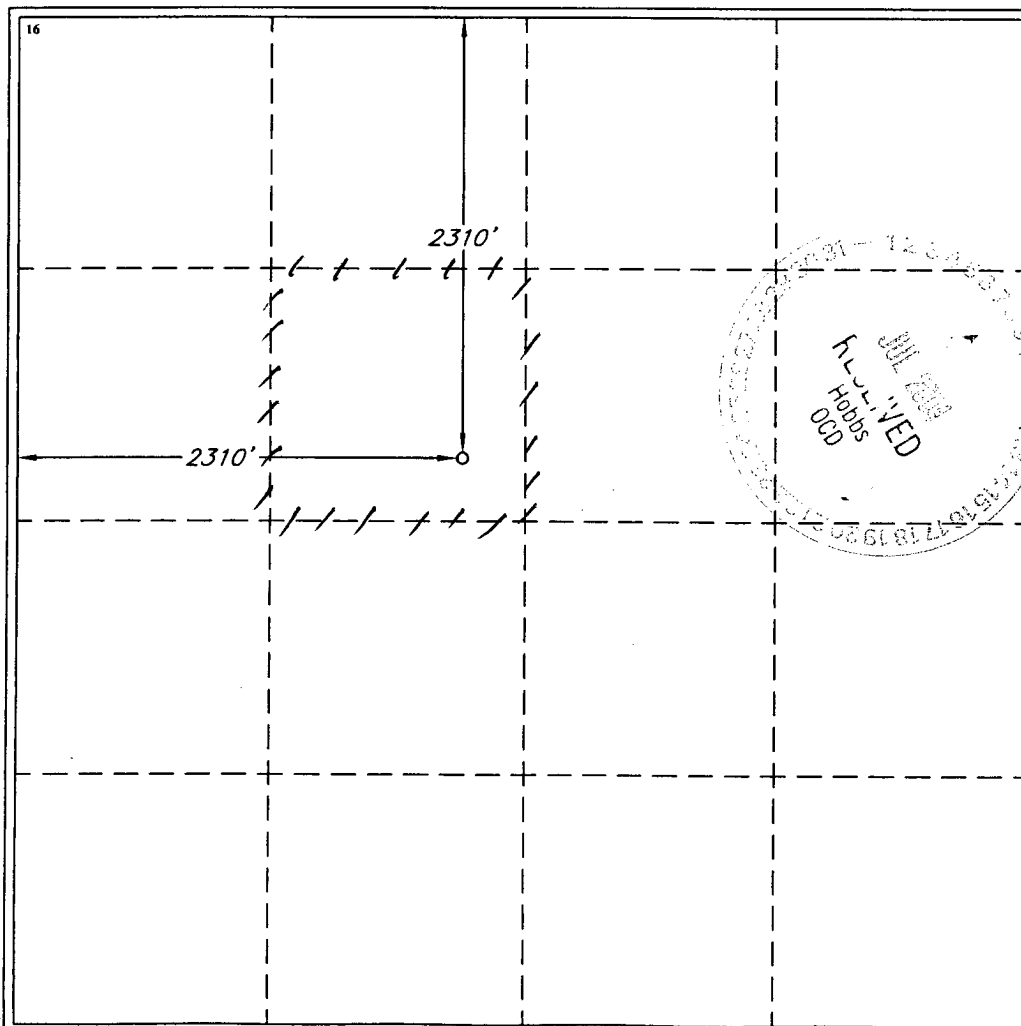
<sup>10</sup> Surface Location

UL or lot no. F	Section 1	Township 20 SOUTH	Range 37 EAST, N.M.P.M.	Lot Idn	Feet from the 2310'	North/South line NORTH	Feet from the 2310'	East/West line WEST	County LEA
--------------------	--------------	----------------------	----------------------------	---------	------------------------	---------------------------	------------------------	------------------------	---------------

<sup>11</sup> Bottom Hole Location If Different From Surface

UL or lot no.	Section	Township	Range	Lot Idn	Feet from the	North/South line	Feet from the	East/West line	County
<sup>12</sup> Dedicated Acres 40	<sup>13</sup> Joint or Infill	<sup>14</sup> Consolidation Code	<sup>15</sup> Order No.						

NO ALLOWABLE WELL BE ASSIGNED TO THIS COMPLETION UNTIL ALL INTERESTS HAVE BEEN CONSOLIDATED OR A NON-STANDARD UNIT HAS BEEN APPROVED BY THE DIVISION



<sup>17</sup> OPERATOR CERTIFICATION

I hereby certify that the information contained herein is true and complete to the best of my knowledge and belief.

Signature  
BRIAN FRANKS  
Printed Name  
DRILL ENGINEER  
Title  
2/26/04  
Date

<sup>18</sup> SURVEYOR CERTIFICATION

I hereby certify that the well location shown on this plat was plotted from field notes of actual surveys made by me or under my supervision, and that the same is true and correct to the best of my belief.

AUGUST 20, 2002

Date of Survey

Signature and Seal of Professional Surveyor

STATE OF NEW MEXICO  
V. LYNN BEZNER  
NO. 7920  
PROFESSIONAL SURVEYOR  
Certificate Number  
V. L. BEZNER R.P.S. #7920  
JOB #83227 / 70 SW / J.C.P.