

District II, Hobbs, NM 88240
1301 W. Grand Avenue, Artesia, NM 88210
District III
1000 Rio Brazos Road, Aztec, NM 87410
District IV
1220 S. St. Francis Dr., Santa Fe, NM 87505

Oil Conservation Division
1220 South St. Francis Dr.
Santa Fe, NM 87505

Form C-101
March 4, 2004

Submit to appropriate District Office
State Lease - 6 Copies
Fee Lease - 5 Copies

☐ AMENDED REPORT

APPLICATION FOR PERMIT TO DRILL, RE-ENTER, DEEPEN, PLUGBACK, OR ADD A ZONE

1 Operator Name and Address POGO PRODUCING COMPANY P.O. BOX 10340 MIDLAND, TEXAS 79702-7340		2 OGRID Number 17891
		3 API Number 30 - 025 - 36764
4 Property Code 33989 33990	5 Property Name TRIPLE X "31" STATE	6 Well No. 2

7 Surface Location

UL or lot no. LOT 4	Section 31	Township 23S	Range 33E	Lot Idn	Feet from the 330'	North/South line SOUTH	Feet from the 990'	East/West line WEST	County LEA
------------------------	---------------	-----------------	--------------	---------	-----------------------	---------------------------	-----------------------	------------------------	---------------

8 Proposed Bottom Hole Location If Different From Surface

UL or lot no.	Section	Township	Range	Lot Idn	Feet from the	North/South line	Feet from the	East/West line	County
---------------	---------	----------	-------	---------	---------------	------------------	---------------	----------------	--------

9 Proposed Pool 1 BRINNINSTOOL-DELAWARE (96193)	10 Proposed Pool 2
----------------------------------------------------	--------------------

Drilling Pit Location and Other Information

UL or lot no. LOT 4	Section 31	Township 23S	Range 33E	Lot Idn	Feet from the 330'	North/South line SOUTH	Feet from the 990'	East/West line WEST	County LEA
Depth to ground water			Distance from nearest fresh water well			Distance from nearest surface water			
11 Work Type Code N		12 Well Type Code O		13 Cable/Rotary ROTARY		14 Lease Type Code S		15 Ground Level Elevation 3642	
16 Multiple NO		17 Proposed Depth 5300'		18 Formation DELAWARE		19 Contractor CAPSTAR		20 Spud Date WHEN APPROVED	

21 Proposed Casing and Cement Program

Hole Size	Casing Size	Casing weight/foot	Setting Depth	Sacks of Cement	Estimated TOC
25"	20"	NA	40'	Redi-mix	SURFACE
12 1/4"	8 5/8"	24	850'	650 Sx.	"
7 7/8"	4 1/2"	11.6	5300'	1000 Sx.	500' From Surface

22 Describe the proposed program. If this application is to DEEPEN or PLUG BACK, give the data on the present productive zone and proposed new productive zone. Describe the blowout prevention program, if any. Use additional sheets if necessary.

SEE ATTACHED SHEET

Permit Expires 1 Year From Approval
Date Unless Drilling Underway

23 I hereby certify that the information given above is true and complete to the best of my knowledge and belief. I further certify that the drilling pit will be constructed according to NMOCD guidelines <input checked="" type="checkbox"/> a general permit <input type="checkbox"/> or an (attached) alternative OCD-approved plan <input type="checkbox"/> .		OIL CONSERVATION DIVISION	
Signature: Joe T. Janica		Approved by: [Signature]	
Printed name: Joe T. Janica		Title: PETROLEUM ENGINEER	
Title: Agent		Approval Date: Expiration Date:	
E-mail Address:			
Date: 07/16/04	Phone: 505-391-8503	Conditions of Approval:	
		Attached <input type="checkbox"/> JUL 19 2004	

1. Drill 25" hole to 40'. Set 40' of 20" conductor pipe and cement to surface with Redi-mix.
2. Drill 12 $\frac{1}{4}$ " hole to 850'. Run and set 850' of 8 5/8" 24# J-55 ST&C casing. Cement with 650 Sx. of Class "C" cement + 2% CaCl, + $\frac{1}{4}$ # Flocele/Sx. Circulate cement to surface.
3. Drill 7 7/8" hole to 5300'. Run and set 5300' of 4 $\frac{1}{2}$ " 11.6# J-55 ST&C casing. Cement with 1000 Sx. of Class "C" cement + additives. Estimate top of cement 500' from surface.

State of New Mexico

DISTRICT I
P.O. Box 1980, Hobbs, NM 88241-1980

Energy, Minerals and Natural Resources Department

Form C-102

Revised February 10, 1994

Submit to Appropriate District Office

State Lease - 4 Copies

Fee Lease - 3 Copies

DISTRICT II
P.O. Drawer DD, Artesia, NM 88211-0719

OIL CONSERVATION DIVISION

P.O. Box 2088

Santa Fe, New Mexico 87504-2088

DISTRICT III
1000 Rio Brazos Rd., Aztec, NM 87410

DISTRICT IV
P.O. BOX 2088, SANTA FE, N.M. 87504-2088

WELL LOCATION AND ACREAGE DEDICATION PLAT

☐ AMENDED REPORT

API Number 30-025-36764	Pool Code 96193 ✓	Pool Name BRINNINSTOOL DELAWARE ✓
Property Code 33989 33990	Property Name TRIPLE X "31" STATE	Well Number 2
OGRID No. 17891	Operator Name POGO PRODUCING COMPANY	Elevation 3642'

Surface Location

UL or lot No.	Section	Township	Range	Lot Idn	Feet from the	North/South line	Feet from the	East/West line	County
4	31	23-S	33-E		330'	SOUTH	990'	WEST	LEA

Bottom Hole Location If Different From Surface

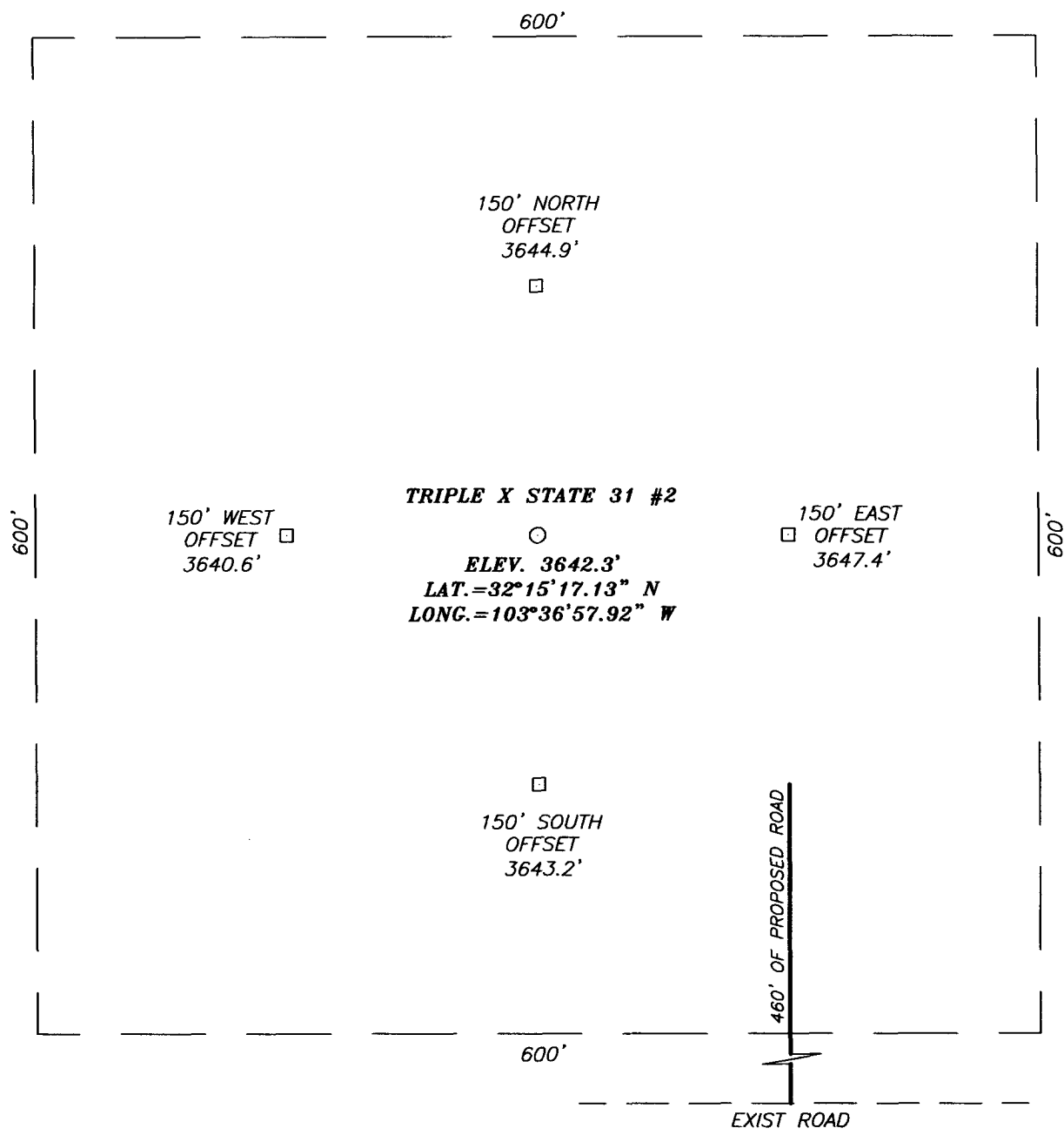
UL or lot No.	Section	Township	Range	Lot Idn	Feet from the	North/South line	Feet from the	East/West line	County

Dedicated Acres	Joint or Infill	Consolidation Code	Order No.
40			

NO ALLOWABLE WILL BE ASSIGNED TO THIS COMPLETION UNTIL ALL INTERESTS HAVE BEEN CONSOLIDATED
OR A NON-STANDARD UNIT HAS BEEN APPROVED BY THE DIVISION

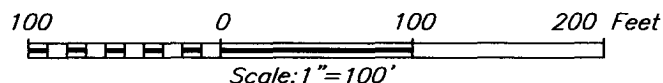
<p>LOT 1</p> <p>37.99 AC</p> <p>LOT 2</p> <p>38.06 AC</p> <p>LOT 3</p> <p>38.12 AC</p> <p>LOT 4</p> <p>38.19 AC</p> <p>990'</p> <p>330'</p>	<p>GEODETIC COORDINATE NAD 27 NME</p> <p>Y=457139.9 N X=721727.3 E</p> <p>LAT.=32°15'17.13" N LONG.=103°36'57.92" W</p>	<p>OPERATOR CERTIFICATION</p> <p>I hereby certify the the information contained herein is true and complete to the best of my knowledge and belief.</p> <p><i>Joe T. Janica</i> Signature</p> <p>Joe T. Janica Printed Name</p> <p>Agent</p> <p>Title</p> <p>07/16/04 Date</p> <p>SURVEYOR CERTIFICATION</p> <p>I hereby certify that the well location shown on this plat was plotted from field notes of actual surveys made by me or under my supervision, and that the same is true and correct to the best of my belief.</p> <p>JUNE 23, 2004</p> <p>Date Surveyed</p> <p>Signature & Seal of Professional Surveyor</p> <p>GARY EIDSON NEW MEXICO 04.110782</p> <p>Certificate No. GARY EIDSON 12641</p>
---------------------------------------------------------------------------------------------------------------------------------------------	-------------------------------------------------------------------------------------------------------------------------------------	-----------------------------------------------------------------------------------------------------------------------------------------------------------------------------------------------------------------------------------------------------------------------------------------------------------------------------------------------------------------------------------------------------------------------------------------------------------------------------------------------------------------------------------------------------------------------------------------------------------------------------------------------------------------------------------------------------------------------------------------------------

SECTION 31, TOWNSHIP 23 SOUTH, RANGE 33 EAST, N.M.P.M.,
 LEA COUNTY, NEW MEXICO



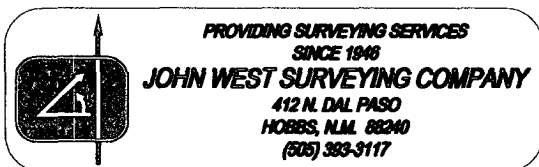
DIRECTIONS TO LOCATION

AT MILEPOST 27 ON ST. HWY. #128 GO NORTH THRU CATTLE GUARD AND GO NORTHWEST 2.9 MILES TO A TWO TRACK ROAD ALONG A SECTION LINE. GO NORTH ON THE TWO TRACK ROAD FOR APPROX. 0.4 MILES. TURN RIGHT AND FOLLOW THE TWO TRACK ROAD 0.2 MILES EAST. LOCATION IS 600' NORTH.



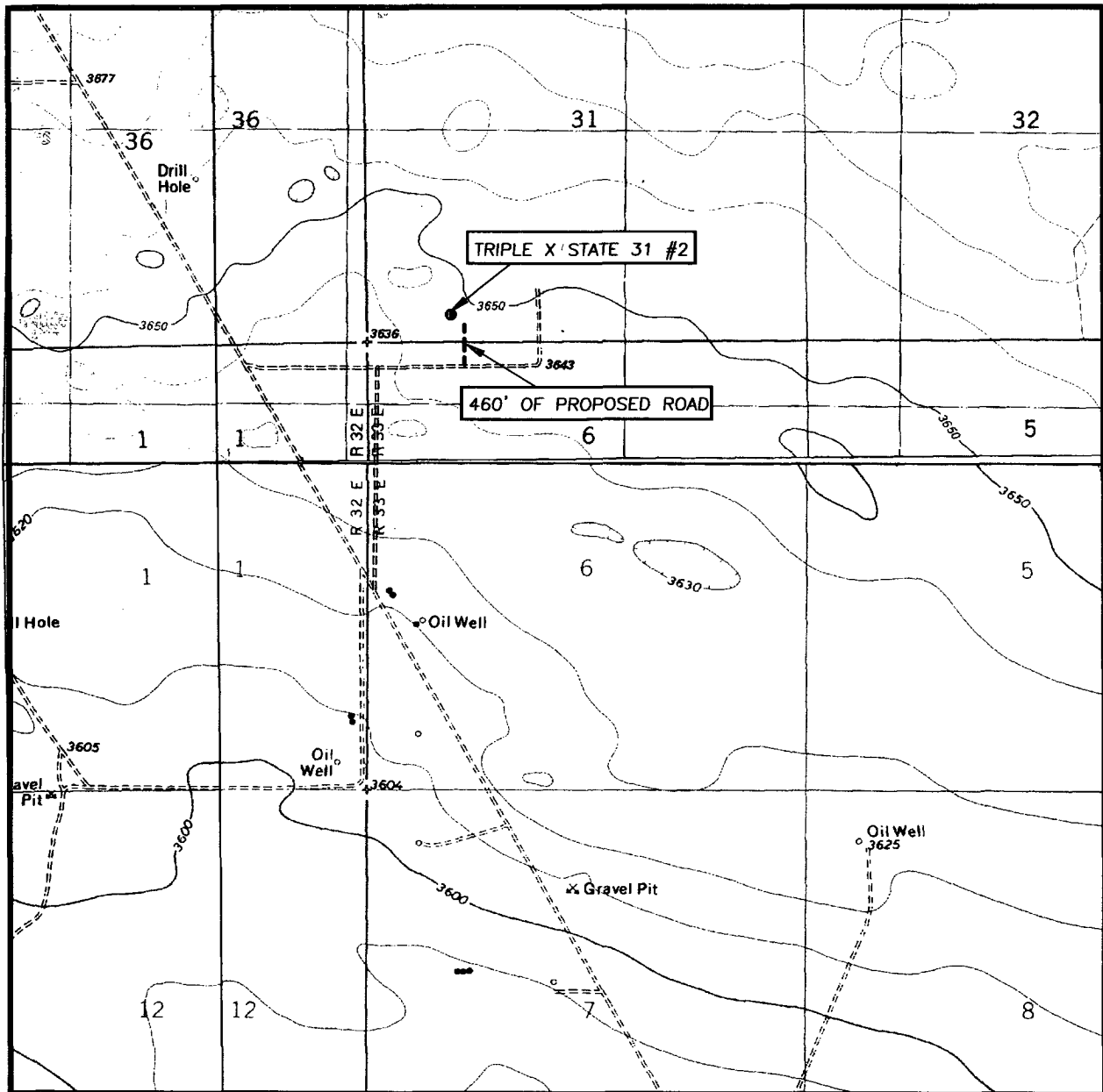
POGO PRODUCING COMPANY

TRIPLE X STATE 31 #2 WELL
 LOCATED 330 FEET FROM THE SOUTH LINE
 AND 990 FEET FROM THE WEST LINE OF SECTION 31,
 TOWNSHIP 23 SOUTH, RANGE 33 EAST, N.M.P.M.,
 LEA COUNTY, NEW MEXICO.



Survey Date: 06/23/04	Sheet 1 of 1 Sheets
W.O. Number: 04.11.0782	Dr By: J. RIVERO REV: N/A
Date: 06/25/04	Disk: CD#10 04110782 Scale: 1"=100'

LOCATION VERIFICATION MAP



SCALE: 1" = 2000'

CONTOUR INTERVAL:
TIP TOP WELLS, N.M. - 10'

SEC. 31 TWP. 23-S RGE. 33-E

SURVEY _____ N.M.P.M.

COUNTY _____ LEA

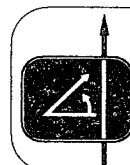
DESCRIPTION 330' FSL & 990' FWL

ELEVATION _____ 3642'

OPERATOR _____ POGO PRODUCING COMPANY

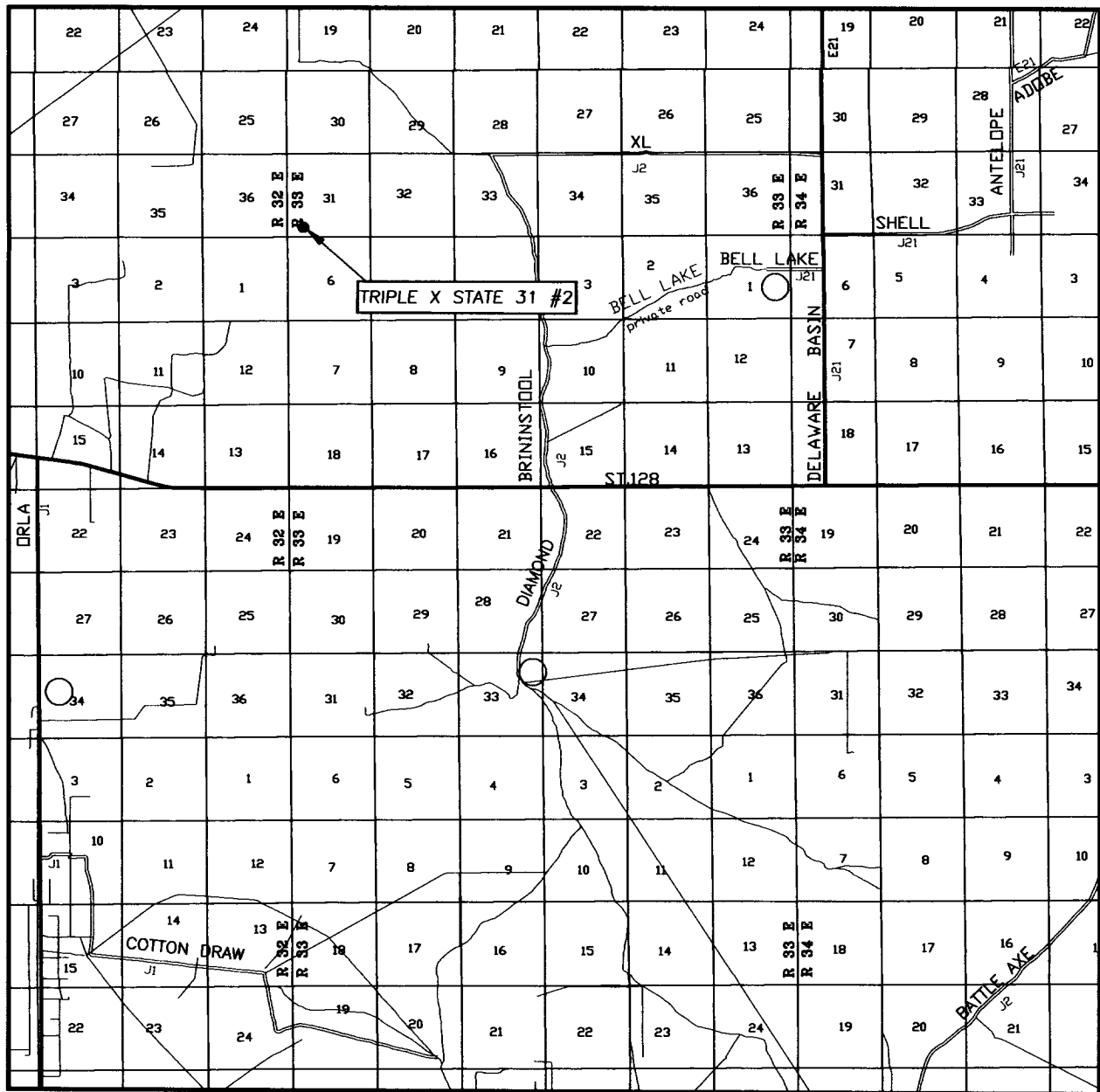
LEASE _____ TRIPLE X STATE 31

U.S.G.S. TOPOGRAPHIC MAP
TIP TOP WELLS, N.M.



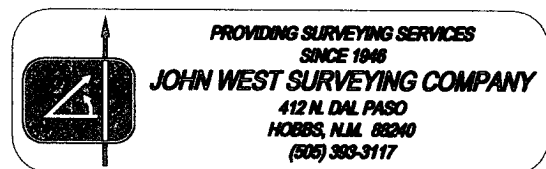
PROVIDING SURVEYING SERVICES
SINCE 1948
JOHN WEST SURVEYING COMPANY
412 N. DAL PASO
HOBBS, N.M. 88240
(505) 383-3117

VICINITY MAP

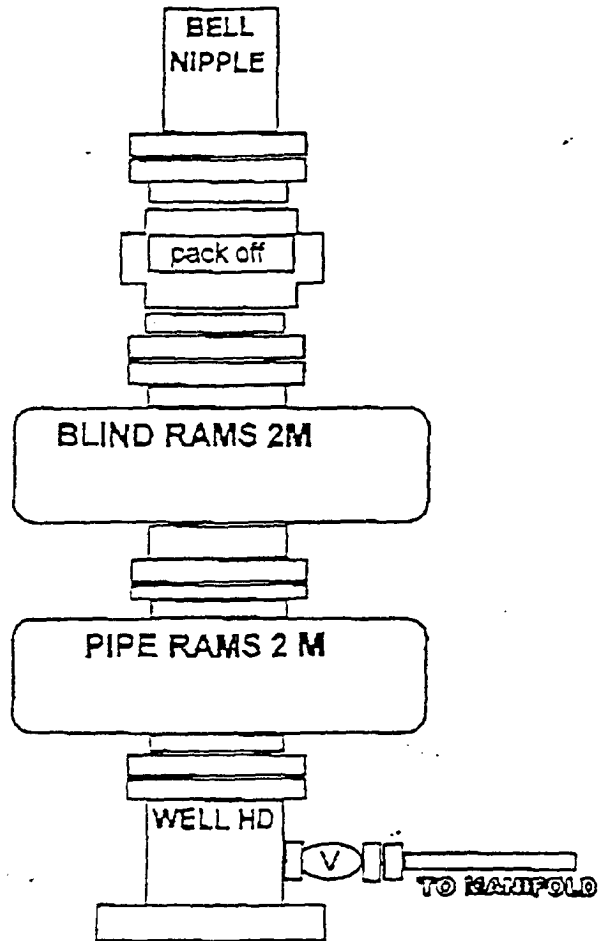


SCALE: 1" = 2 MILES

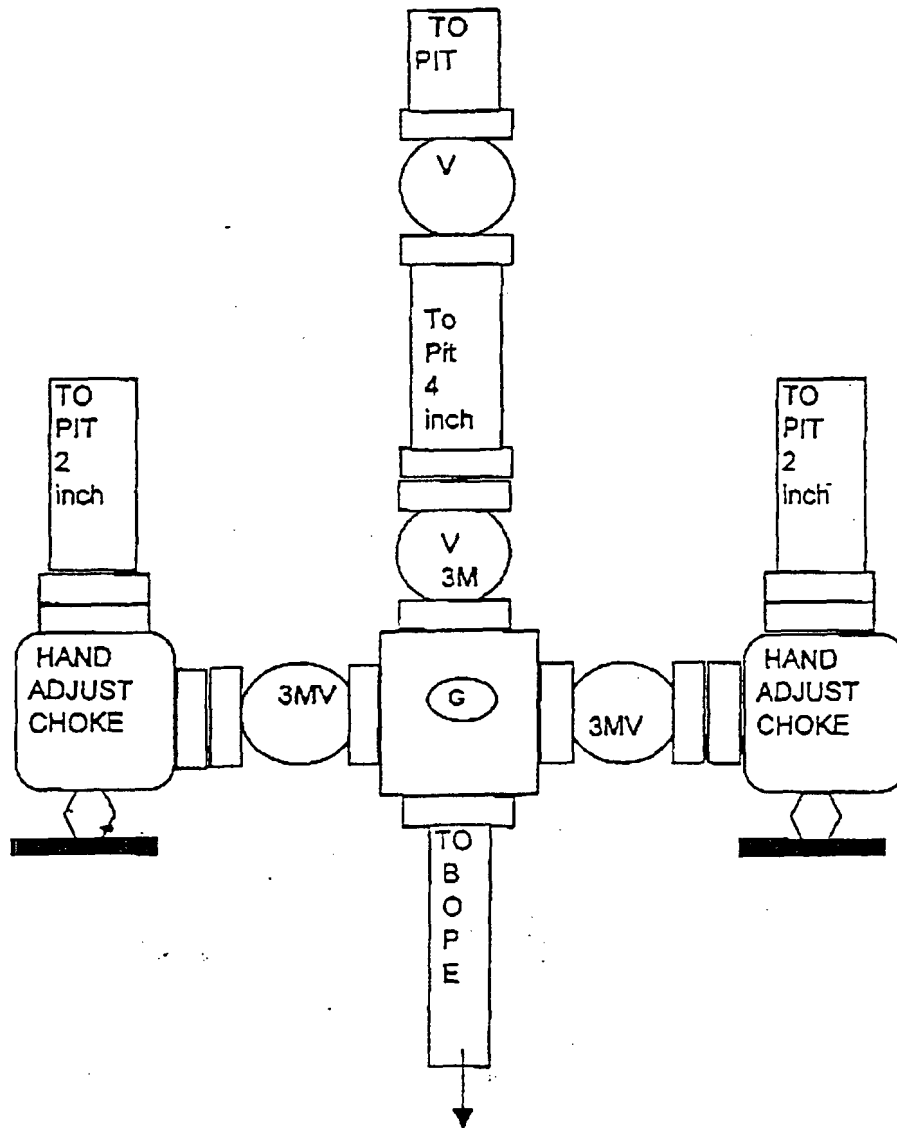
SEC. 31 TWP. 23-S RGE. 33-E
 SURVEY N.M.P.M.
 COUNTY LEA
 DESCRIPTION 330' FSL & 990' FWL
 ELEVATION 3642'
 OPERATOR POGO PRODUCING COMPANY
 LEASE TRIPLE X STATE 31



11" 2M



3000 PSI WP



District I
1625 N. French Dr., Hobbs, NM 88240
District II
1301 W. Grand Avenue, Artesia, NM 88210
District III
1000 Rio Brazos Road, Aztec, NM 87410
District IV
1220 S. St. Francis Dr., Santa Fe, NM 87505

State of New Mexico
Energy Minerals and Natural Resources

Oil Conservation Division
1220 South St. Francis Dr.
Santa Fe, NM 87505

Form C-1
March 12, 2004

For drilling and production facilities, submit appropriate NMOCD District Office.
For downstream facilities, submit to Santa Fe office

Pit or Below-Grade Tank Registration or Closure

Is pit or below-grade tank covered by a "general plan"? Yes ☐ No ☒

Type of action: Registration of a pit or below-grade tank ☐ Closure of a pit or below-grade tank ☒

Operator: Pogo Producing Company Telephone: 432-685-8100 e-mail address: wrightc@pogoproducing.com
Address: P. O. Box 10340, Midland, TX 79702-7340
Facility or well name: Triple X 31 State #2 API #: 30 025 36764 U/L or Qtr/Qtr M Sec 31 T 23 R 33
County: Lea Latitude 32 15 17.13N Longitude 103 36 57.92W NAD: 1927 ☒ 1983 ☐ Surface Owner Federal ☐ State ☒ Private ☐ Indian ☐

Pit	Below-grade tank
Type: Drilling <input checked="" type="checkbox"/> Production <input type="checkbox"/> Disposal <input type="checkbox"/> Workover <input type="checkbox"/> Emergency <input type="checkbox"/> Lined <input checked="" type="checkbox"/> Unlined <input type="checkbox"/> Liner type: Synthetic <input checked="" type="checkbox"/> Thickness <u>12</u> mil Clay <input type="checkbox"/> Volume <u>16000</u> bbl	Volume: _____ bbl Type of fluid: _____ Construction material: _____ Double-walled, with leak detection? Yes <input type="checkbox"/> If not, explain why not. _____
Depth to ground water (vertical distance from bottom of pit to seasonal high water elevation of ground water.) <u>EST. 146'</u>	Less than 50 feet (20 points) 50 feet or more, but less than 100 feet (10 points) 100 feet or more X (0 points) 0
Wellhead protection area: (Less than 200 feet from a private domestic water source, or less than 1000 feet from all other water sources.)	Yes (20 points) No X (0 points) 0
Distance to surface water: (horizontal distance to all wetlands, playas, irrigation canals, ditches, and perennial and ephemeral watercourses.)	Less than 200 feet (20 points) 200 feet or more, but less than 1000 feet (10 points) 1000 feet or more (0 points) 0
Ranking Score (Total Points) 0	

If this is a pit closure: (1) attach a diagram of the facility showing the pit's relationship to other equipment and tanks. (2) Indicate disposal location: onsite ☐ offsite ☐ If offsite, name of facility _____. (3) Attach a general description of remedial action taken including remediation start date and end date. (4) Groundwater encountered: No ☐ Yes ☐ If yes, show depth below ground surface _____ ft. and attach sample results. (5) Attach soil sample results and a diagram of sample locations and excavations.

I hereby certify that the information above is true and complete to the best of my knowledge and belief. I further certify that the above-described pit or below-grade tank been/will be constructed or closed according to NMOCD guidelines ☒ a general permit ☐ or an (attached) alternative OCD-approved plan ☐.

Date: 08/03/04

Printed Name/Title Cathy Wright, Sr Oper Tech

Signature Cathy Wright

Your certification and NMOCD approval of this application/closure does not relieve the operator of liability should the contents of the pit or tank contaminate ground water or otherwise endanger public health or the environment. Nor does it relieve the operator of its responsibility for compliance with any other federal, state, or local laws and/or regulations.

Approval:

Date: 8/9/04

Printed Name/Title CHRIS WILLIAMS - DIST. SUPERVISOR

Signature Chris Williams

NWIS

Water Resources

Data Category:

Site Information

Geographic Area:

New Mexico

go

Site Map for New Mexico

USGS 321611103321601 23S.33E.26.42100

Available data for this site

Station site map

GO

Lea County, New Mexico

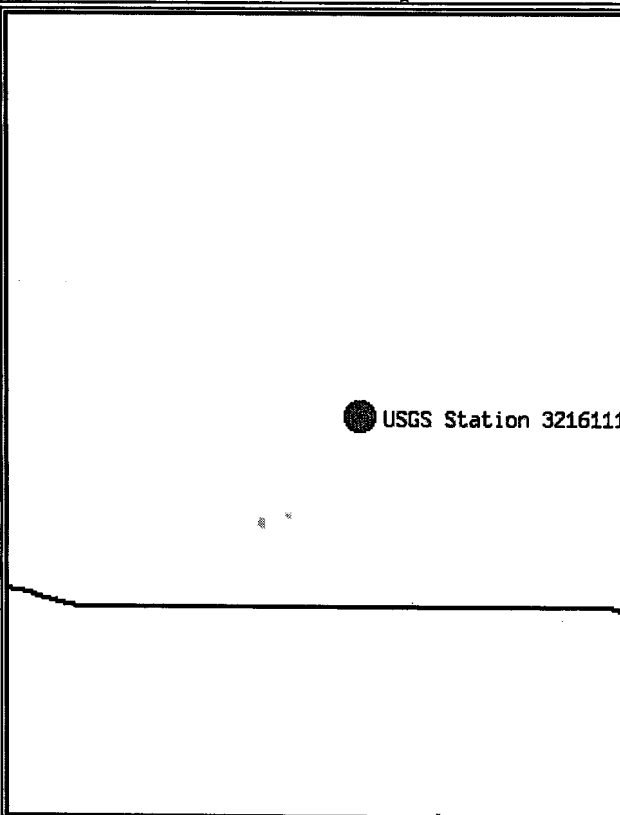
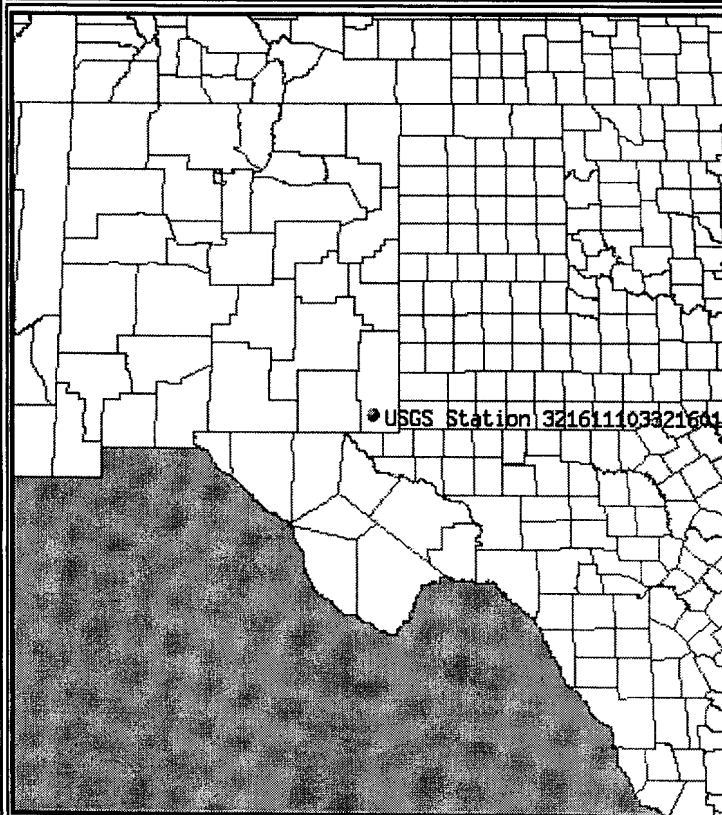
Hydrologic Unit Code 13070007

Latitude 32°16'11", Longitude 103°32'16" NAD27

Gage datum 3,644.00 feet above sea level NGVD29

Location of the site in New Mexico.

Site map.



ZOOM IN 2X, 4X, 6X, 8X, or ZOOM OUT 2X, 4X, 6X, 8X.

Maps are generated by US Census Bureau TIGER Mapping Service.

Questions about data [New Mexico NWISWeb Data Inquiries](#)Feedback on this website [New Mexico NWISWeb Maintainer](#)

NWIS Site Inventory for New Mexico: Site Map

<http://waterdata.usgs.gov/nm/nwis/nwismap?>[Top](#)
[Explanation of terms](#)



Water Resources

Data Category:

Ground Water

Geographic Area:

New Mexico

go

Ground-water levels for New Mexico

Search Results -- 1 sites found

Search Criteria

site_no list =	• 321611103321601
----------------	-------------------

Save file of selected sites to local disk for future upload

USGS 321611103321601 23S.33E.26.42100

Available data for this site

Ground-water: Levels

GO

Lea County, New Mexico

Hydrologic Unit Code 13070007

Latitude 32°16'11", Longitude 103°32'16" NAD27

Gage datum 3,644.00 feet above sea level NGVD29

The depth of the well is 190 feet below land surface.

This well is completed in CHINLE FORMATION (231CHNL)

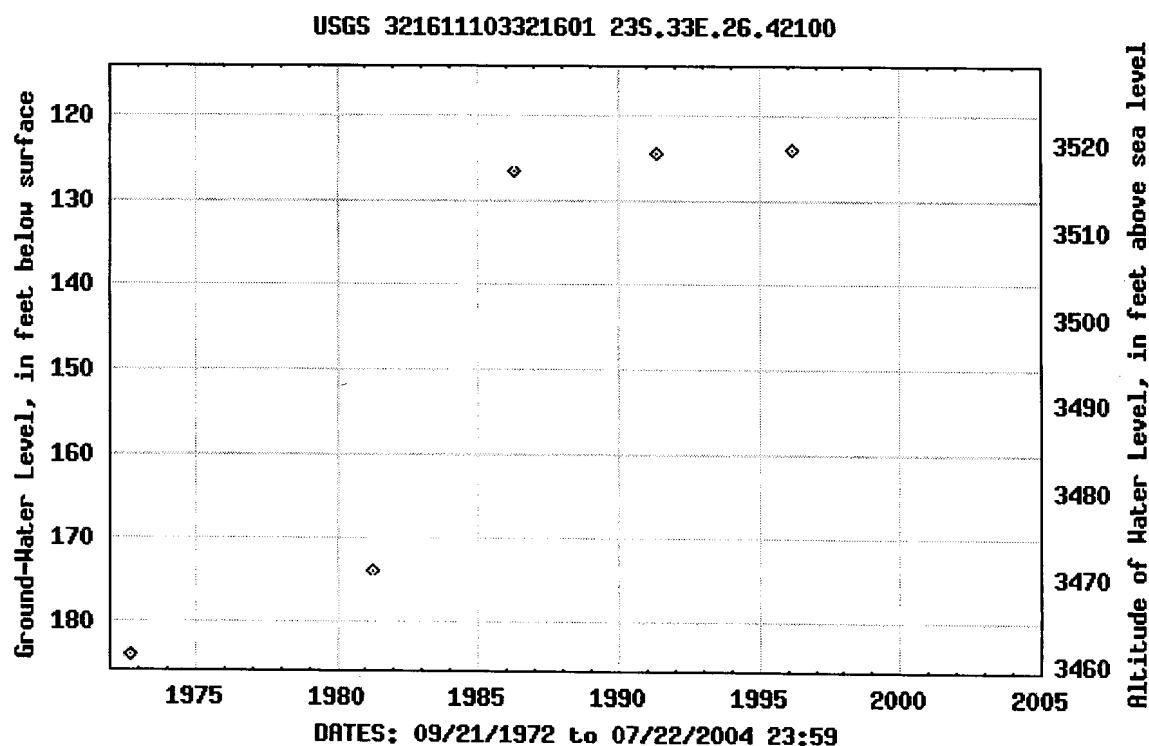
Output formats

Table of data

Tab-separated data

Graph of data

Reselect period



Breaks in the plot represent a gap of at least one calendar year between two consecutive points.

Great Circle Calculator.

By Ed Williams

You need Javascript enabled if you want this page to do anything useful! For Netscape, it's under Options/Network Preferences/Languages.

Compute true course and distance between points.

Enter lat/lon of points, select distance units and earth model and click "compute". Lat/lons may be entered in DD.DD, DD:MM.MM or DD:MM:SS.SS formats.

Note that if either point is very close to a pole, the course may be inaccurate, because of its extreme sensitivity to position and inevitable rounding error.

Input Data

Lat1		Lon1	
32:16:11	N	103:32:16	W
Lat2		Lon2	
32:15:17.13	N	103:36:57.92	W

Output

Course 1-2	Course 2-1	Distance
257.28768	77.245879	4.07343566

Distance Units: Earth model:

Compute lat/lon given radial and distance from a known point

Enter lat/lon of initial point, true course and distance. Select distance units and earth model and click "compute". Lat/lons may be entered in DD.DD, DD:MM.MM or DD:MM:SS.SS formats.

Note that the starting point cannot be a pole.

Input data

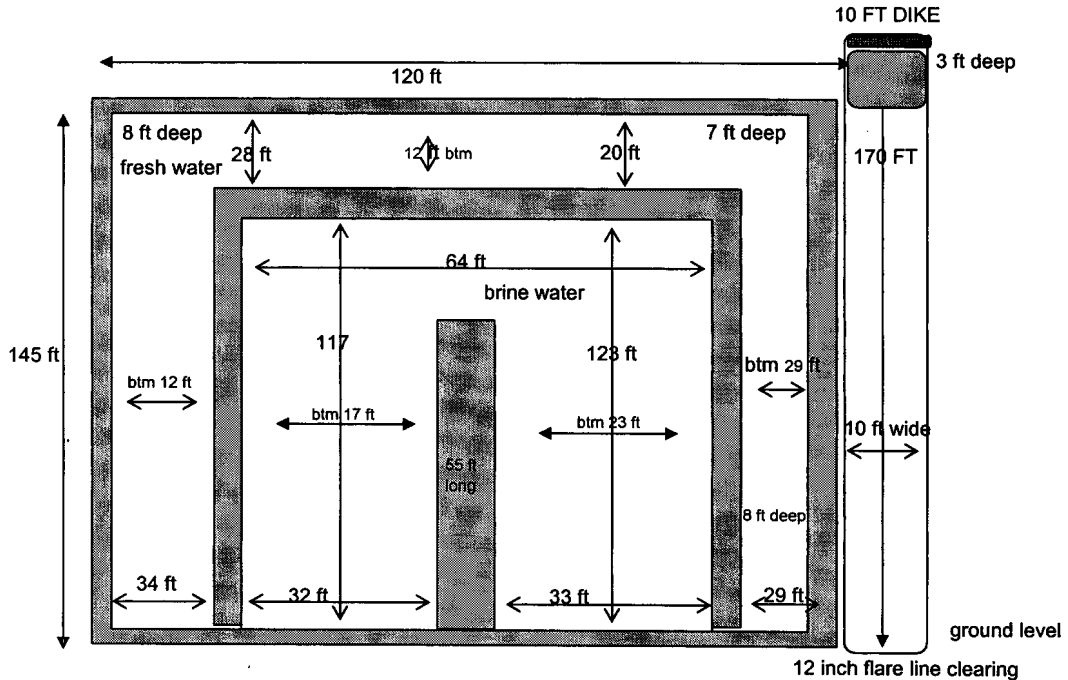
Lat1		Lon1	
0:00.00	N	0:00.00	W
Course 1-2		Distance 1-2	

POGO Producing Company

Triple "X" 31 State #2

Approximate Pit Dimensions

330' FSL & 990' FWL, Sec 31, T23S, R33E, Lea County, New Mexico
API # 30 025 36764



PIT NOTES:

Pit will be lined with 12 mil Black plastic w/ UV protection.

Pit walls are 6 ft to 8 ft wide.

Pit is 8 ft deep below ground level plus 2 ft walls

Pit walls are 2 ft above ground level.

Caliches mined from pit used to make Well Pad.

Fresh Water volume to ground level = \pm 7950 bbls

Brine Water volume to ground level = \pm 7730 bbls

12 inch Flare line laid on gradual descending graded ROW away from rig to avoid fluid trapping

Fresh water well = (Nad 27) 32° 13' 12" N & 103° 39' 56" W "Published data"

Fresh water well = (Nad 27) 32° 16' 11" N & 103° 32' 16" W "Published data"

Fresh water well = (Nad 27) 32° 13' 48" N & 103° 34' 04" W "Published data"

This well produces from a depth greater than 50 ft.

Pit equals approx 16000 bbls