

Submit 3 Copies To Appropriate District
Office
District I
1625 N. French Dr., Hobbs, NM 88240
District II
1301 W. Grand Ave., Artesia, NM 88210
District III
1000 Rio Brazos Rd., Aztec, NM 87410
District IV
1220 S. St. Francis Dr., Santa Fe, NM
87505

State of New Mexico
Energy, Minerals and Natural Resources

OIL CONSERVATION DIVISION
1220 South St. Francis Dr.
Santa Fe, NM 87505

Form C-103
Revised March 25, 1999

SUNDRY NOTICES AND REPORTS ON WELLS (DO NOT USE THIS FORM FOR PROPOSALS TO DRILL OR TO DEEPEN OR PLUG BACK TO A DIFFERENT RESERVOIR. USE "APPLICATION FOR PERMIT" (FORM C-101) FOR SUCH PROPOSALS.)		WELL API NO. 30-025-03391
1. Type of Well: Oil Well <input checked="" type="checkbox"/> Gas Well <input type="checkbox"/> Other <input type="checkbox"/>		5. Indicate Type of Lease STATE <input checked="" type="checkbox"/> FEE <input type="checkbox"/>
2. Name of Operator Citation Oil & Gas Corp.		6. State Oil & Gas Lease No. B- 1400
3. Address of Operator P O Box 690688 Houston, Texas 77269		7. Lease Name or Unit Agreement Name: State L
4. Well Location Unit Letter W: 660feet from the South line and 1980feet from the East line Section 1 Township 21S Range 35E NMPM County Lea		8. Well No. 3
10. Elevation (Show whether DR, RKB, RT, GR, etc.) 3606' DF		9. Pool name or Wildcat Eumont

11. Check Appropriate Box to Indicate Nature of Notice, Report or Other Data

NOTICE OF INTENTION TO:

PERFORM REMEDIAL WORK ☐ PLUG AND ABANDON ☐
TEMPORARILY ABANDON ☐ CHANGE PLANS ☐
PULL OR ALTER CASING ☐ MULTIPLE COMPLETION ☐

OTHER: Open additional perfs and frac.

☒

SUBSEQUENT REPORT OF:

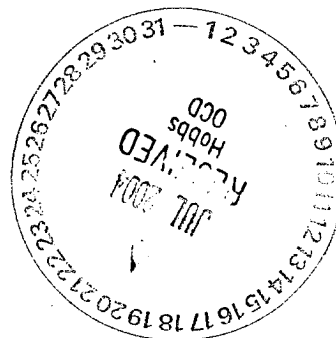
REMEDIAL WORK ☐ ALTERING CASING ☐
COMMENCE DRILLING OPNS. ☐ PLUG AND ABANDONMENT ☐
CASING TEST AND CEMENT JOB ☐

OTHER:

☐

12. Describe proposed or completed operations. (Clearly state all pertinent details, and give pertinent dates, including estimated date of starting any proposed work). SEE RULE 1103. For Multiple Completions: Attach wellbore diagram of proposed completion or recompilation.

Citation Oil & Gas Corp. request permission to open additional perforations, fracture treat the above named well and return it to production with the attached procedure.



I hereby certify that the information above is true and complete to the best of my knowledge and belief.

SIGNATURE Bridget Alexander TITLE Regulatory Assistant DATE 7/15/04
Type or print name Bridget Alexander Telephone No. 281-517-7309
(This space for State use)

APPROVED BY [Signature] TITLE PETROLEUM ENGINEER DATE JUL 22 2004
Conditions of approval, if any:

WORKOVER PROCEDURE

PROJECT: State L #3 – OAP and Frac

DRILLED & COMPLETED: 6/54 LAST WO: 2/76 – OAP and Acidize

LOCATION: 660' FSL & 1980' FEL Section 1-21S-35E

FIELD: Eumont COUNTY: Lea STATE: NM

TD: 3,908' PBTD: 3,884' DATUM: 3572' GL KB: 13'

CASING AND LINER RECORD

SIZE	WEIGHT	DEPTH	CEMENT	HOLE	TOC	REMARKS
8 5/8"	32#	354'	250 sx	11"	Surf	Circ???
5 1/2"	15.5#	3799'	750 sx	7 7/8"	700' (Est)	Calc w/ 75% XS

Producing Formation: Well SI'd. Seven Rivers (3698' – 3752') and Queen OH (3799' – 3908')

Rods: (4) 3/4" KD Rod Subs (6', 6', 4', 8'), (151) 3/4" KD Rods, (1) 3/4" KD Rod Sub (2'), 2" x 1 1/2" x 12' Pump

Tubing: (128) Jts 2 3/8" 4.7# J-55 Tbg, (1) Jt 2 3/8" 4.7# J-55 IPC Tbg, 2 3/8" SN, 2 3/8" Perf Sub and 2 3/8" BPMA

Note: Well SI'd w/ rods and tbg in well. 4 3/4" OH f/ 3799' – 3908'

PROCEDURE

- Notify NMOCD of planned work.
 - Use 2% KCl water for all water placed in wellbore.
 - Dig working pit w/ bank for circulating w/ air unit.
 - Locate and rack 3800' 2 3/8" 4.7# J-55 eue 8rd production tbg.
 - Locate and rack 3800' 2 7/8" 6.5# N-80 WS.
 - Locate and rack 3600' 3 1/2" 9.3# N-80 WS.
 - Move in American 160D from State M #3. Sheave for 7 SPM in 54" SL. Install 10 HP motor.
1. MIRU PU. POH w/ rods. (NOTE: Inspect rods and lay down as needed.) Kill tbg and csg w/ 2% KCL water if necessary.
 2. ND WH. NU BOP. POH w/ 2 3/8" tbg. Lay down all tbg.
 3. RIH w/ 4 3/4" MT skirted bit and 2 7/8" SN on 2 7/8" 6.5# N-80 WS to 3799' (Top of OH). Tally in hole. POH w/bit.
 4. RU WL. RIH and set CIBP at +/- 3680'. POH w/ WL.
 5. Load hole w/ 2% KCl and PT to 500#. (NOTE: If csg does not test, RIH w/ pkr to isolate leak.)
 6. RIH w/ GR/CCL/CBL logging tools. Run GR/CCL/CBL f/ PBTD to TOC or minimum run. POH w/ logging tools. Evaluate log for cmt top. RD WL.

7. RU WL w/ full lubricator. RIH w/ 3 1/8" csg gun. Correlate to Schlumberger Gamma Ray Neutron log dated 6/15/54. Perf Yates / Seven Rivers w/ 1 JSPF (0.38") as follows:

Perf Interval	Shots	Formation
3353' - 3414'	62	Yates
3438' - 3446'	9	Yates
3460' - 3466'	7	Seven Rivers
3484' - 3490'	7	Seven Rivers
3532' - 3550'	19	Seven Rivers
3560' - 3586'	27	Seven Rivers
Totals	131	

Total of 131 holes f/ (3353' – 3586'). POH w/ csg guns.

8. RIH and dump bail 2 sx cmt on CIBP @ +/- 3680' (10' cmt / sack). RD WL.
9. RU hydrotesters. RIH w/ 5 1/2" Arrowset 1X Frac Pkr w/ Dual Direction flapper valves, P-110 Inner Flow Tube (2.0"ID) and T-2 On/Off tool, 2 7/8" SN and 6' x 3 1/2" N-80 tbg sub on 3 1/2" 9.3# N-80 WS. Test tbg to 7000 psi AS (69% of new rating). Set pkr @ +/- 3600'. Test CIBP to 3000 psi. Release Pkr and PUH to +/- 3586' (btm perf).
10. RU acid/frac company. Spot 250 gal 15% AS HCL acid across perfs. PUH w/ pkr to 3325' and reverse 5 bbls. Set pkr @ +/- 3325'. Load csg w/ 2% KCl. Hold 500 psi on csg w/ pop off set at +/- 750 psi. Monitor csg throughout acid and frac job.
11. Acidize Yates/ Seven Rivers (3353' – 3586') w/ 3300 gal 15% AS HCL acid at +/- 10-15 BPM (No Diverter). Frac Yates / Seven Rivers (3353' – 3586') as per service company recommendation using CO₂. Tag w/ IR-192 @ 0.5MC/1M# sand (74 day half-life). Record rates, max and min pressures and SIP's. (NOTE: Max pressure = 5500 psi. All sand tagged w/ IR-192.)
12. Rlse On-Off Tool and sting out of Pkr. Check for backflow. PUH to 3300' (btm 2nd stage perf). Spot 300 gal double inhibited 15% AS HCL acid across 2nd stage interval (3052' – 3300'). POH w/ Inner Flow Tube and On-Off tool.
13. RU WL w/ full lubricator. Pressure csg to 500 psi w/ 2% KCl. RIH w/ 3 1/8" csg gun. Correlate to Schlumberger Gamma Ray Neutron log dated 6/15/54. Perf Yates w/ 1 JSPF (0.38") as follows:

Perf Interval	Shots	Formation
3052' - 3076'	25	Yates
3084' - 3114'	31	Yates
3134' - 3154'	21	Yates
3176' - 3182'	7	Yates
3218' - 3223'	6	Yates
3227' - 3234'	8	Yates
3257' - 3267'	11	Yates
3277' - 3300'	24	Yates
Totals	133	

Total of 133 holes f/ (3052' – 3300'). POH w/ csg guns.

14. RIH w/ 5 1/2" RTTS Pkr, 2 7/8" SN AND X-Over on 3 1/2" WS to +/- 3300'. Spot 275 gal 15% AS HCL acid across perfs. PUH w/ pkr to 3000' and reverse 5 bbls. Set pkr @ +/- 3300'.
15. Load csg w/ 2% KCl. Hold 500 psi on csg w/ pop off set at +/- 750 psi. Monitor csg throughout acid and frac job.
16. Acidize Yates (3052' – 3300') w/ 3300 gal 15% AS HCL acid at +/- 10-15 BPM (No Diverter). Frac Yates (3052' – 3300') as per service company recommendation using CO₂. Tag w/ SC-46 @

0.5MC/1M# sand (84 day half-life). Record rates, max and min pressures and SIP's. (NOTE: Max pressure = 5500 psi. All sand tagged w/SC-46.)

17. Flow back well to TT as per service company recommendation.
18. RU SL. Set SL Tbg plug in 2 7/8" SN. Load and test 3 1/2" tbg w/ 2% KCL. Perf 3 1/2" tbg sub above SN. RD SL. RU and swab back load from annulus. RD swab. (NOTE: Perforate w/ SL Tbg punch.)
19. Rlse Pkr. POH w/ 3 1/2" WS. LD Pkr and 3 1/2" WS.
20. RIH w/ 2 7/8" frac Pkr retrieving head and 2 7/8" SN on 2 7/8" WS to frac Pkr. RU foam air unit and clean out sand to Pkr. RD foam air unit. Latch onto Pkr and release. POH w/ frac Pkr and 2 7/8" WS.
21. TIH w/ 4 3/4" MT skirted bit and 2 7/8" SN on 2 7/8" WS. Tag for fill. RU foam air unit and clean out frac sand to PBTD. CHC. RD foam air unit. POH w/ bit and LD 2 7/8" WS.
22. RU WL w/ Lubricator. Run After Frac Spectra (dual isotope) GR Log f/ 2,700' - PBTD. POH and RD WL.
23. Run 2 3/8" 4.7# J-55 eue 8rd production tbg string as follows: (NOTE: Tally in Hole. Set TAC w/ 10K Tension or 7" stretch. Will need to pick up all tubing.)

QTY	ITEM	LENGTH	DEPTH
TUBING	KB	13'	13'
113	Jts 2 3/8" 4.7# J-55 eue 8rd tbg	3505'	3518'
1	Jt 2 3/8" 4.7# J-55 eue 8rd IPC tbg	31'	3549'
1	2 3/8" SN	1'	3550'
1	2 3/8"x 4' TBG Sub	4'	3554'
1	Cavins D2301G Desander	20'	3574'
2	2 Jts 2 3/8" BPMA	62'	3636'

24. RU Swab. Swab well until clean fluid is produced. RD Swab.
25. Run rod string as follows:

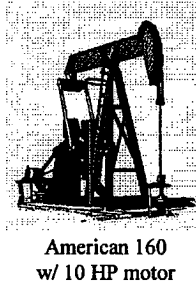
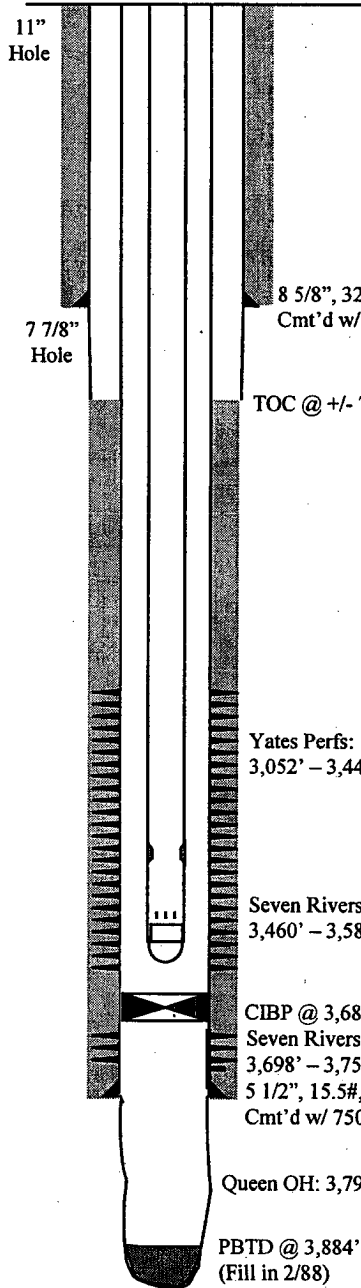
RODS		
1	1 1/4" x 16' PR w/ 1 1/2" x 10' Liner	16'
Set	3/4" KD Rod Subs w/ SM couplings	10' (+/-)
141	3/4" KD Rods w/ SM couplings	3525'
1	3/4" KD Rod Sub w/ SM couplings	2'
1	2" x 1 1/4" x 12' RHBC Pump	12'

26. Load tbg w 2% KCl and pressure test pump. Space out and hang well on. Place pumping unit in 54" SL at +/- 7 SPM (Expected production rate +/- 49 BFPD @ 85% efficiency and 1 1/4" pump).
27. RD MO PU. Return well to production and place on test.

CITATION OIL AND GAS CORPORATION

PROPOSED WELLBORE DIAGRAM AND INFORMATION

Well Name: State L #3 **Field:** Eumont
Date: March 9, 2004 **Location:** 660' FSL & 1980' FEL, Sec 1
County: Lea **State:** New Mexico



Surface:	660' FSL & 1980' FEL, Sec 1, T21S-R35E Lea County, NM
Completed:	June 1954
Elevation:	3585' (DF)
KB:	13'

CASING DETAIL			
Size	Weight	Grade	Depth
8 5/8"	32	H-40	Surf - 354
5 1/2"	15.5	J-55	Surf - 3799

TUBING DETAIL			
Qty	Description	Length	Depth
---	KB	13	13
113	Jts 2 3/8", 4.7#, J-55 tbg	3505	3518
1	Jt 2 3/8", 4.7#, J-55 IPC tbg	31	3549
1	2 3/8" SN	1	3550
1	2 3/8" Tbg Sub	4	3554
1	Cavins D2301G Desander	20	3574
2	Jts 2 3/8" BPMA	62	3636

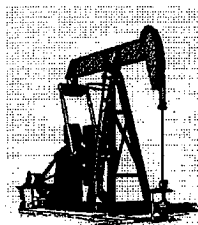
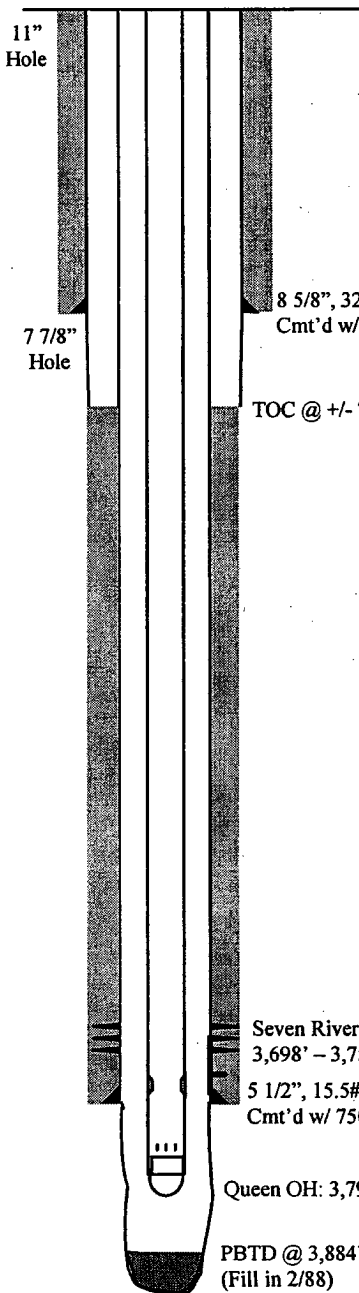
ROD DETAIL			
Qty	Size	Type	Length
1	3/4"	KD Subs	+/- 10
141	3/4"	KD	3,525
1	3/4"	KD Sub	2
Polish Rod: 1 1/4" x 16' w/ 1 1/2" x 10' Liner			
Pump: 2" x 1 1/4" x 12'			

TD @ 3,908'

CITATION OIL AND GAS CORPORATION

CURRENT WELLBORE DIAGRAM AND INFORMATION

Well Name: State L #3 **Field:** Eumont
Date: March 9, 2004 **Location:** 660' FSL & 1980' FEL, Sec 1
County: Lea **State:** New Mexico



No Unit

Surface: 660' FSL & 1980' FEL,
 Sec 1, T21S-R35E
 Lea County, NM
Completed: June 1954
Elevation: 3585' (DF)
KB: 13'

CASING DETAIL

Size	Weight	Grade	Depth
8 5/8"	32	H-40	Surf - 354
5 1/2"	15.5	J-55	Surf - 3799

TUBING DETAIL

Qty	Description	Length	Depth
---	KB	13	13
128	Jts 2 3/8", 4.7#, J-55 tbg	3774	3787
1	Jt 2 3/8", 4.7#, J-55 IPC tbg	31	3818
1	2 3/8" SN	1	3819
1	2 3/8" Perf Sub	4	3823
1	Jt 2 3/8" BPMA	29	3852

ROD DETAIL

Qty	Size	Type	Length
4	3/4"	KD Subs	24
151	3/4"	KD	3,775
1	3/4"	KD Sub	2

Polish Rod: None

Pump: 2" x 1 1/2" x 12'

TD @ 3,908'