

UNITED STATES  
DEPARTMENT OF THE INTERIOR  
BUREAU OF LAND MANAGEMENT

## WELL COMPLETION OR RECOMPLETION REPORT AND LOG

FORM APPROVED  
OMB No. 1004-0137  
Expires: November 30, 2000

5. Lease Serial No.  
NMLC058514

1a. Type of Well ☒ Oil Well ☐ Gas Well ☐ Dry ☐ Other  
b. Type of Completion ☒ New Well ☐ Work Over ☐ Deepen ☐ Plug Back ☐ Diff. Resvr.  
Other \_\_\_\_\_

6. If Indian, Allottee or Tribe Name

7. Unit or CA Agreement Name and No.

2. Name of Operator  
MACK ENERGY CORPORATION

Contact: ROBERT CHASE  
E-Mail: jerrys@mackenergycorp.com

8. Lease Name and Well No.  
PEARSALL BX 7

3. Address P O BOX 960  
ARTESIA, NM 88211-0960

3a. Phone No. (include area code)  
Ph: 505.748.1288

9. API Well No.  
30-025-36511-00-S1

4. Location of Well (Report location clearly and in accordance with Federal requirements)\*

Sec 34 T17S R32E Mer NMP  
At surface SWNE 1800FNL 1650FEL

At top prod interval reported below

At total depth

10. Field and Pool, or Exploratory  
MALJAMAR GRAYBURG SA

11. Sec., T., R., M., or Block and Survey  
or Area Sec 34 T17S R32E Mer NMP

12. County or Parish  
LEA

13. State  
NM

14. Date Spudded  
01/13/2004

15. Date T.D. Reached  
02/03/2004

16. Date Completed  
☐ D & A ☒ Ready to Prod.  
03/25/2004

17. Elevations (DF, KB, RT, GL)\*  
3950 GL

18. Total Depth: MD 6020  
TVD 6020

19. Plug Back T.D.: MD 5015  
TVD 5015

20. Depth Bridge Plug Set: MD 5050  
TVD 5050

21. Type Electric & Other Mechanical Logs Run (Submit copy of each)  
GRND LSGR

22. Was well cored? ☒ No ☐ Yes (Submit analysis)  
Was DST run? ☒ No ☐ Yes (Submit analysis)  
Directional Survey? ☐ No ☒ Yes (Submit analysis)

## 23. Casing and Liner Record (Report all strings set in well)

Hole Size	Size/Grade	Wt. (#/ft.)	Top (MD)	Bottom (MD)	Stage Cementer Depth	No. of Sk. & Type of Cement	Slurry Vol. (BBL)	Cement Top*	Amount Pulled
17.500	13.375 H-40	48.0	0	320		376		0	
12.250	9.625 N-80	47.0	0	2347		850		0	
7.875	5.500 J-55	17.0	0	5971		1500		0	

## 24. Tubing Record

Size	Depth Set (MD)	Packer Depth (MD)	Size	Depth Set (MD)	Packer Depth (MD)	Size	Depth Set (MD)	Packer Depth (MD)
2.875	4548							

## 25. Producing Intervals

## 26. Perforation Record

Formation	Top	Bottom	Perforated Interval	Size	No. Holes	Perf. Status
GRAYBURG-SAN ANDRES	4356	4518	4356 TO 4518	0.000	33	1 JSPE
B)			5071 TO 5095	0.000	11	1 JSPE
C)						
D)						

## 27. Acid, Fracture, Treatment, Cement Squeeze, Etc.

Depth Interval	Amount and Type of Material
4356 TO 4518	2500 GALS 15% NEFE, 38,960# 16/30 SAND, 34,400 GALS 40# GEL
5071 TO 5095	1500 GALS 15% NEFE

## 28. Production - Interval A

Date First Produced	Test Date	Hours Tested	Test Production	Oil BBL	Gas MCF	Water BBL	Oil Gravity Corr. API	Gas Gravity	Production Method
04/09/2004	05/16/2004	24	→	8.0	10.0	378.0			ELECTRIC PUMPING UNIT
Choke Size	Tbg. Press. Flwg. SI	Csg. Press.	24 Hr. Rate	Oil BBL	Gas MCF	Water BBL	Gas:Oil Ratio	Well Status	
		32.0	→	8	10	378		POW	

## 28a. Production - Interval B

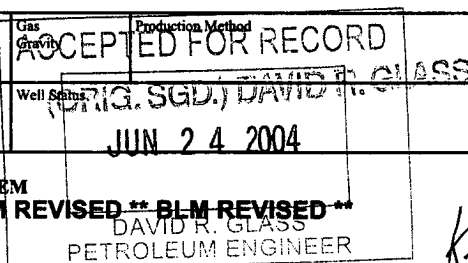
Date First Produced	Test Date	Hours Tested	Test Production	Oil BBL	Gas MCF	Water BBL	Oil Gravity Corr. API	Gas Gravity	Production Method
			→						
Choke Size	Tbg. Press. Flwg. SI	Csg. Press.	24 Hr. Rate	Oil BBL	Gas MCF	Water BBL	Gas:Oil Ratio	Well Status	
			→						

(See Instructions and spaces for additional data on reverse side)

ELECTRONIC SUBMISSION #32143 VERIFIED BY THE BLM WELL INFORMATION SYSTEM

\*\* BLM REVISED \*\* BLM REVISED \*\* BLM REVISED \*\* BLM REVISED \*\* BLM REVISED \*\*

DAVID R. GLASS  
PETROLEUM ENGINEER



KZ

28b. Production - Interval C									
Date First Produced	Test Date	Hours Tested	Test Production →	Oil BBL	Gas MCF	Water BBL	Oil Gravity Corr. API	Gas Gravity	Production Method
Choke Size	Tbg. Press. Flwg. SI	Csg. Press.	24 Hr. Rate →	Oil BBL	Gas MCF	Water BBL	Gas:Oil Ratio	Well Status	

28c. Production - Interval D									
Date First Produced	Test Date	Hours Tested	Test Production →	Oil BBL	Gas MCF	Water BBL	Oil Gravity Corr. API	Gas Gravity	Production Method
Choke Size	Tbg. Press. Flwg. SI	Csg. Press.	24 Hr. Rate →	Oil BBL	Gas MCF	Water BBL	Gas:Oil Ratio	Well Status	

29. Disposition of Gas(Sold, used for fuel, vented, etc.)  
**SOLD**

30. Summary of Porous Zones (Include Aquifers):

Show all important zones of porosity and contents thereof: Cored intervals and all drill-stem tests, including depth interval tested, cushion used, time tool open, flowing and shut-in pressures and recoveries.

31. Formation (Log) Markers

Formation	Top	Bottom	Descriptions, Contents, etc.	Name	Top Meas. Depth
GRAYBURG-SAN ANDRES	4356	4518		YATES SEVEN RIVERS QUEEN GRAYBURG SAN ANDRES	2512 2936 3590 4020 4520

32. Additional remarks (include plugging procedure):

03/11/2004 Perforated from 5071-5095.5'.  
03/12/2004 Acidized w/1500 gals 15% NEFE.  
03/15/2004 Swab well all water.  
03/17/2004 Set CIBP @ 5050' W/35' cement cap.  
03/18/2004 Perforated from 4356-4518.5' 33 holes. Acidized w/2500 gals 15% NEFE.  
03/24/2004 Frac w/38,960# 16/30 sand and 34,400 gals 40# gel.  
03/25/2004 RIH w/2 7/8" J-55 8rd 165 joints SN @ 4548', RIH w/2 1/2 x 2 x 24' pump.

33. Circle enclosed attachments:

- |   |                    |               |                       |
|---|--------------------|---------------|-----------------------|
| 1. Electrical/Mechanical Logs (1 full set req'd.)     | 2. Geologic Report | 3. DST Report | 4. Directional Survey |
| 5. Sundry Notice for plugging and cement verification | 6. Core Analysis   | 7 Other:      |                       |

34. I hereby certify that the foregoing and attached information is complete and correct as determined from all available records (see attached instructions):

Electronic Submission #32143 Verified by the BLM Well Information System.  
For MACK ENERGY CORPORATION, sent to the Hobbs  
Committed to AFMSS for processing by LINDA ASKWIG on 06/24/2004 (04LA0213SE)

Name (please print) JERRY SHERRELL

Title PRODUCTION CLERK

Signature \_\_\_\_\_ (Electronic Submission)

Date 06/24/2004

Title 18 U.S.C. Section 1001 and Title 43 U.S.C. Section 1212, make it a crime for any person knowingly and willfully to make to any department or agency of the United States any false, fictitious or fraudulent statements or representations as to any matter within its jurisdiction.

**\*\* REVISED \*\* REVISED \*\* REVISED \*\* REVISED \*\* REVISED \*\* REVISED \*\* REVISED \*\* REVISED \*\***