

District I  
1625 N. French Dr., Hobbs, NM 88240  
District II  
1301 W. Grand Avenue, Artesia, NM 88210  
District III  
1000 Rio Brazos Road, Aztec, NM 87410  
District IV  
1220 S. St. Francis Dr., Santa Fe, NM 87505

State of New Mexico  
Energy Minerals and Natural Resources

Form C-101  
May 27, 2004

Oil Conservation Division  
1220 South St. Francis Dr.  
Santa Fe, NM 87505

Submit to appropriate District Office

☐ AMENDED REPORT

**APPLICATION FOR PERMIT TO DRILL, RE-ENTER, DEEPEN, PLUGBACK, OR ADD A ZONE**

<sup>1</sup> Operator Name and Address Matrix New Mexico Operating Company, LLC 508 West Wall #700 Midland, Texas 79701		<sup>2</sup> OGRID Number 228971
<sup>3</sup> Property Code 34207	<sup>4</sup> Property Name Gladys	<sup>5</sup> API Number 30 - 025 - 36821
<sup>9</sup> Proposed Pool 1 Trinity (Wolfcamp)		<sup>10</sup> Proposed Pool 2 2

**7 Surface Location**

UL or lot no.	Section	Township	Range	Lot Idn	Feet from the	North/South line	Feet from the	East/West line	County
F	33	12 S	38 E		1735	North	2270	West	Lea

**8 Proposed Bottom Hole Location If Different From Surface**

UL or lot no.	Section	Township	Range	Lot Idn	Feet from the	North/South line	Feet from the	East/West line	County

**Additional Well Information**

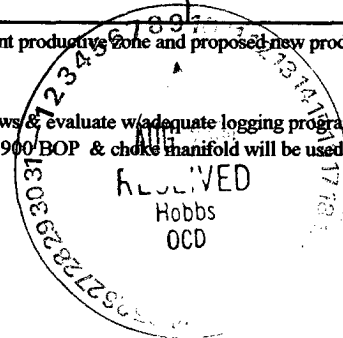
<sup>11</sup> Work Type Code New Well	<sup>12</sup> Well Type Code Oil	<sup>13</sup> Cable/Rotary Rotary	<sup>14</sup> Lease Type Code Private	<sup>15</sup> Ground Level Elevation 3819
<sup>16</sup> Multiple No	<sup>17</sup> Proposed Depth 9800'	<sup>18</sup> Formation Wolfcamp	<sup>19</sup> Contractor TBD	<sup>20</sup> Spud Date ASAP
Depth to Groundwater 180'		Distance from nearest fresh water well +/- 3500'		Distance from nearest surface water None
Pit: Liner: Synthetic <input checked="" type="checkbox"/> 2 mils thick Clay <input type="checkbox"/> Pit Volume 2100 bbls Drilling Method: Closed-Loop System <input type="checkbox"/> Fresh Water <input type="checkbox"/> Brine <input type="checkbox"/> Diesel/Oil-based <input type="checkbox"/> Gas/Air <input type="checkbox"/>				

**21 Proposed Casing and Cement Program**

Hole Size	Casing Size	Casing weight/foot	Setting Depth	Sacks of Cement	Estimated TOC
17 1/2"	13 3/8"	48 #/ft H-40	450'	350	Surface
12 1/4"	8 5/8"	32 #/ft K-55	4500'	2500	Surface
7 7/8"	5 1/2"	17 #/ft N-80	9800	1000	+/-4000'

22 Describe the proposed program. If this application is to DEEPEN or PLUG BACK, give the data on the present productive zone and proposed new productive zone. Describe the blowout prevention program, if any. Use additional sheets if necessary

Drill Wolfcamp well to +/- 9800'. Circulate cement to surface on 13 3/8" and 8 5/8" casing. Test all significant shows & evaluate w/ adequate logging program. abandonment will be preformed in accordance w/prudent practices & regulatory requirements. A double ram series 900 BOP & choke manifold will be used Completion or from the 8 5/8" casing point to total depth.



23 I hereby certify that the information given above is true and complete to the best of my knowledge and belief. I further certify that the drilling pit will be constructed according to NMOCD guidelines ☐ a general permit ☐ or an (attached) alternative OCD-approved plan ☐.

Printed name: J. W. Mulloy  
Title: Agent  
E-mail Address: jwmulloy@jwmulloy.com

Date: 8-8-04

Phone: 432-687-0323

**OIL CONSERVATION DIVISION**

Approved by:

Title:

PETROLEUM ENGINEER

Approval Date: AUG 17 2004

Expiration Date:

Conditions of Approval Attached ☐

DISTRICT I  
1625 N. French Dr., Hobbs, NM 88240

State of New Mexico  
Energy, Minerals & Natural Resources Department

Form C-102  
Revised August 15, 2000  
Submit to Appropriate District Office  
State Lease - 4 Copies  
Fee Lease - 3 Copies

DISTRICT II  
P.O. Drawer DD, Artesia, NM 88211-0719

DISTRICT III  
1000 Rio Brasos Rd., Asteo, NM 87410

OIL CONSERVATION DIVISION  
2040 South Pacheco  
Santa Fe, NM 87505

DISTRICT IV  
2040 South Pacheco, Santa Fe, NM 87505

☐ AMENDED REPORT

WELL LOCATION AND ACREAGE DEDICATION PLAT

API Number 30-025-36821	Pool Code 59890	Pool Name TRINITY WLF CAMP
Property Code 34207	Property Name GLADYS	Well Number 2
OGRID No.	Operator Name MATRIX NEW MEXICO OPERATING COMPANY, LLC	Elevation 3819'

Surface Location

UL or lot No. F	Section 33	Township 12 S	Range 38 E	Lot Idn	Feet from the 1735	North/South line NORTH	Feet from the 2270	East/West line WEST	County LEA
--------------------	---------------	------------------	---------------	---------	-----------------------	---------------------------	-----------------------	------------------------	---------------

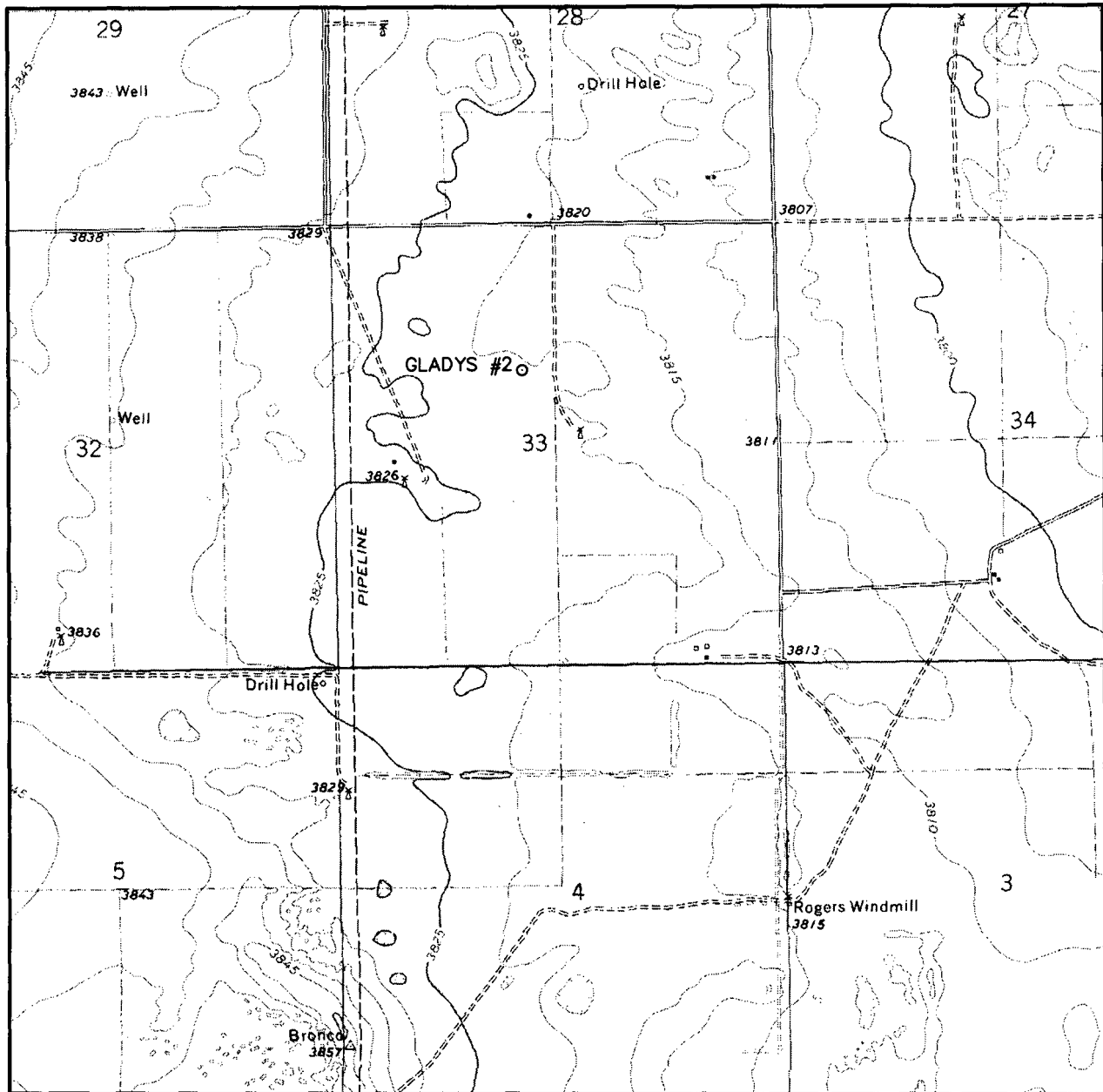
Bottom Hole Location If Different From Surface

UL or lot No.	Section	Township	Range	Lot Idn	Feet from the	North/South line	Feet from the	East/West line	County
Dedicated Acres		Joint or Infill		Consolidation Code		Order No.			

NO ALLOWABLE WILL BE ASSIGNED TO THIS COMPLETION UNTIL ALL INTERESTS HAVE BEEN CONSOLIDATED OR A NON-STANDARD UNIT HAS BEEN APPROVED BY THE DIVISION

<p>Plane Coordinate X = 876,246.0 Y = 816,166.9</p>	<b>OPERATOR CERTIFICATION</b>  I hereby certify the the information contained herein is true and complete to the best of my knowledge and belief.  Signature J. W. Mulloy Printed Name AGENT Title 8/8/04 Date	
	<b>SURVEYOR CERTIFICATION</b>  I hereby certify that the well location shown on this plat was plotted from field notes of actual surveys made by me or under my supervision and that the same is true and correct to the best of my belief.  July 20, 2004 Date Surveyed Signature & Seal of Professional Surveyor W.O. Num. 2004-0515 Certificate No. MACON McDONALD 12185	
	<b>NOTE:</b> 1) Plane Coordinates shown hereon are Transverse Mercator and Conform to the "New Mexico Coordinate System", New Mexico East Zone North American Datum of 1927. Distances shown hereon are mean horizontal surface values.	

# LOCATION VERIFICATION MAP



SCALE: 1" = 2000'

CONTOUR INTERVAL:  
PRARIEVIEW NE- 5'

SEC. 33 TWP. 12-S RGE. 38-E

SURVEY N.M.P.M.

COUNTY LEA

DESCRIPTION 1735' FNL & 2270' FWL

ELEVATION 3819'

OPERATOR MATRIX NEW MEXICO  
OPERATING COMPANY, LLC

LEASE GLADYS

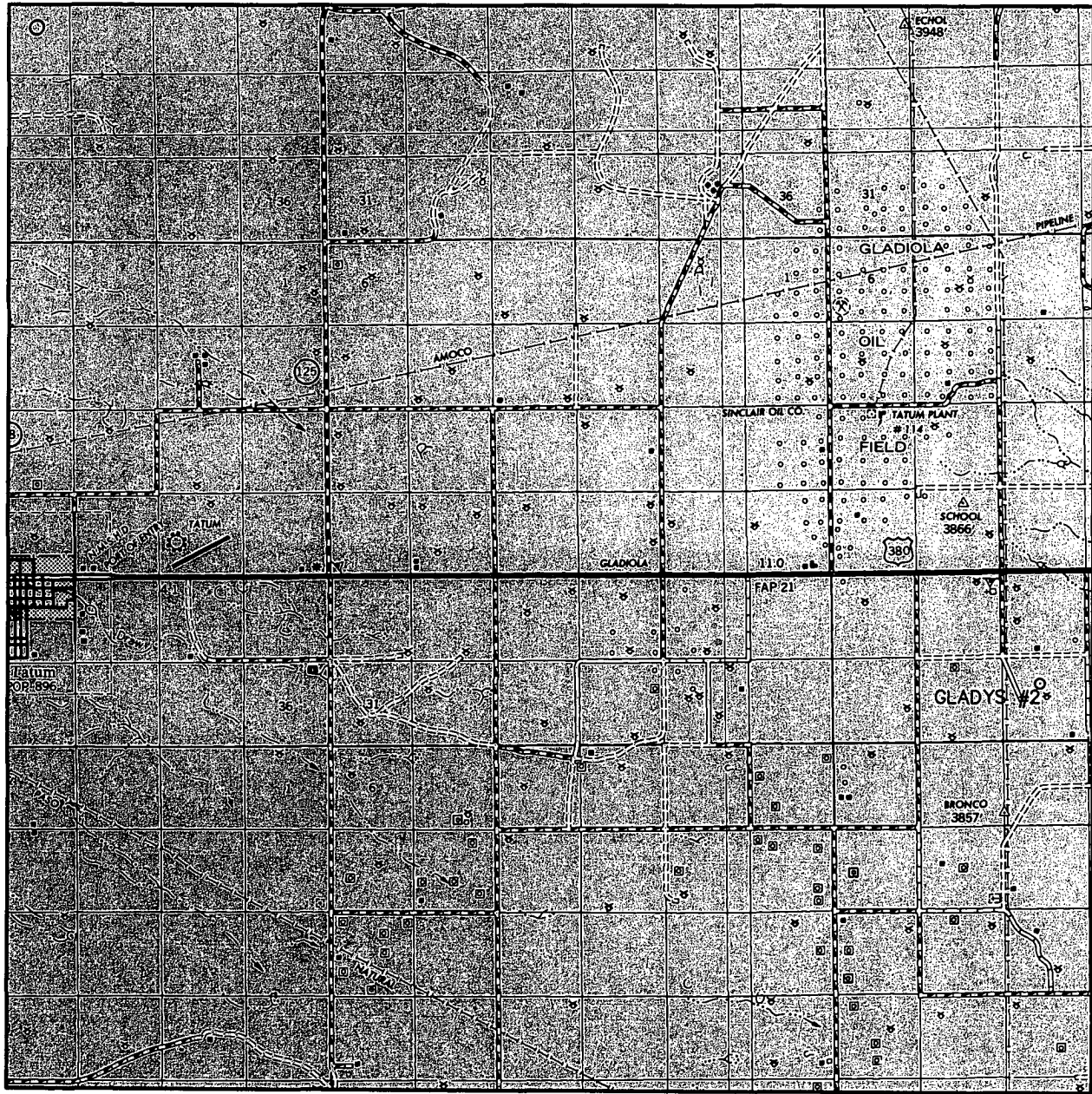
U.S.G.S. TOPOGRAPHIC MAP  
PRARIEVIEW NE, N.M.



**WEST  
COMPANY**  
of Midland, Inc.

110 W. LOUISIANA, STE. 110  
MIDLAND TEXAS, 79701  
(432) 687-0865 - (432) 687-0868 FAX

# VICINITY MAP



SCALE: 1" = 2 MILES

SEC. 33 TWP. 12-S RGE. 38-E

SURVEY N.M.P.M.

COUNTY LEA

DESCRIPTION 1735' FNL & 2270' FWL

ELEVATION 3819'

OPERATOR MATRIX NEW MEXICO OPERATING COMPANY, LLC

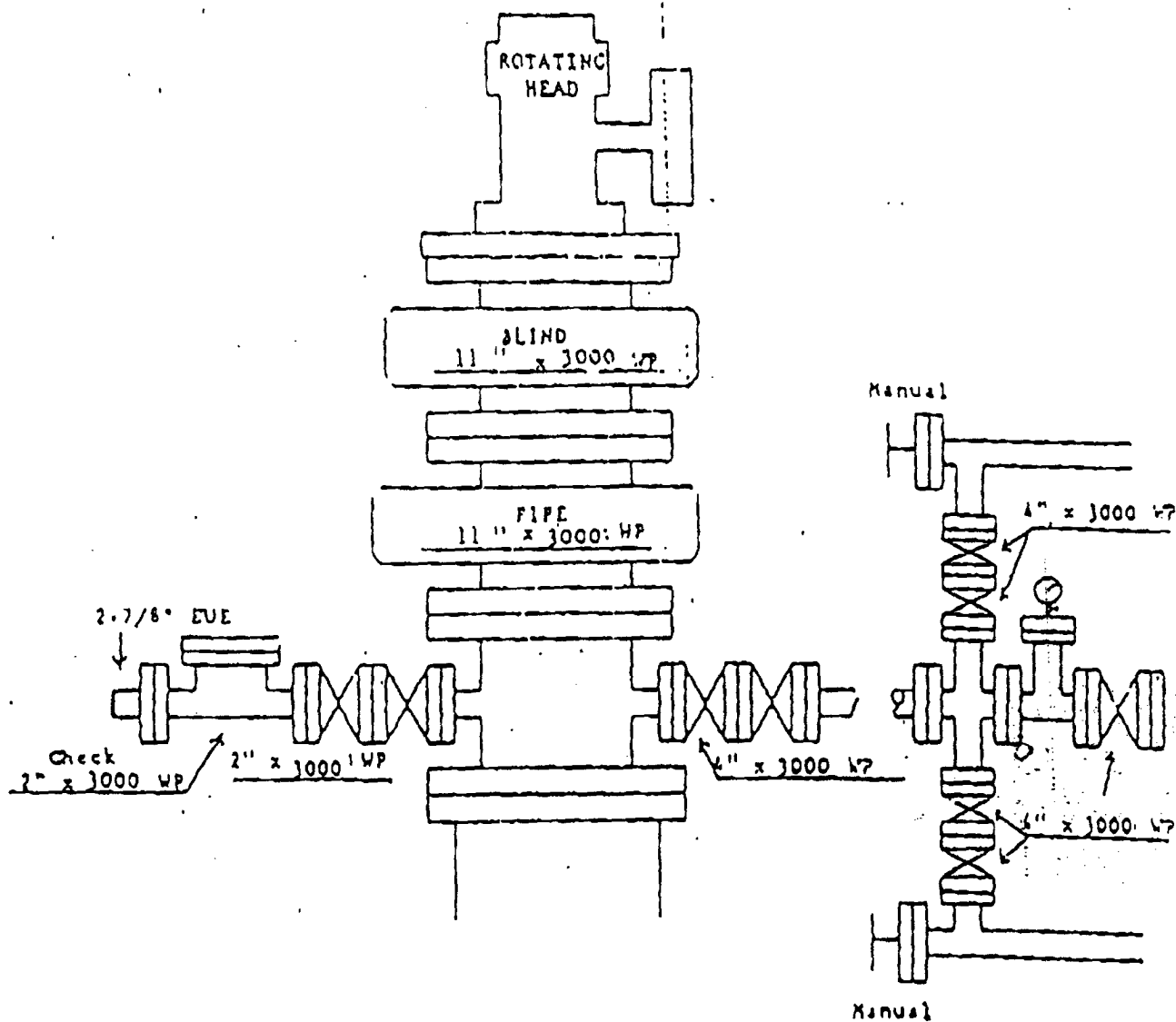
LEASE GLADYS



**WEST**  
**COMPANY**  
of Midland, Inc.

110 W. LOUISIANA, STE. 110  
MIDLAND TEXAS, 79701  
(432) 687-0865 - (432) 687-0868 FAX

## ATTACHMENT "A"



- A --- Rotating Head
- B --- Pipe Rams
- C --- Blind Rams
- D --- 2" Kill Line
- E --- Adapter Spool
- F --- 4" Choke Line
- G --- Casing Head

