

District I
1625 N. French Dr., Hobbs, NM 88240
District II
1301 W. Grand Avenue, Artesia, NM 88210
District III
1000 Rio Brazos Road, Aztec, NM 87410
District IV
1220 S. St. Francis Dr., Santa Fe, NM 87505

State of New Mexico
Energy Minerals and Natural Resources

Form C-101
May 27, 2004

Oil Conservation Division
1220 South St. Francis Dr.
Santa Fe, NM 87505

Submit to appropriate District Office

☐ AMENDED REPORT

APPLICATION FOR PERMIT TO DRILL, RE-ENTER, DEEPEN, PLUGBACK, OR ADD A ZONE

¹ Operator Name and Address Edge Petroleum Operating Company, Inc. 1301 Travis, Suite 2000 Houston, TX 77002		² OGRID Number 224400
³ Property Code 34208	⁵ Property Name South Kernitz 18 State	⁴ API Number 30-025-36822 ⁶ Well No. #1
⁹ Proposed Pool 1 Sombbrero (Atoka)		¹⁰ Proposed Pool 2 Kernitz West (Cisco)

7 Surface Location

UL or lot no.	Section	Township	Range	Lot Idn	Feet from the	North/South line	Feet from the	East/West line	County
L	18	16-S	34-E	3	1563	South	660	West	Lea

8 Proposed Bottom Hole Location If Different From Surface

UL or lot no.	Section	Township	Range	Lot Idn	Feet from the	North/South line	Feet from the	East/West line	County

Additional Well Information

¹¹ Work Type Code N	¹² Well Type Code G	¹³ Cable/Rotary R	¹⁴ Lease Type Code S	¹⁵ Ground Level Elevation 4156'
¹⁶ Multiple No	¹⁷ Proposed Depth 13,500'	¹⁸ Formation Chester Lime	¹⁹ Contractor Patterson	²⁰ Spud Date 8-23-04
Depth to Groundwater 125'		Distance from nearest fresh water well Over 1,000'		Distance from nearest surface water Over 1,000'
Pit: Liner: Synthetic <input checked="" type="checkbox"/> 12 mils thick Clay <input type="checkbox"/> Pit Volume: _____ bbls Drilling Method: Closed-Loop System <input type="checkbox"/> Fresh Water <input checked="" type="checkbox"/> Brine <input checked="" type="checkbox"/> Diesel/Oil-based <input type="checkbox"/> Gas/Air <input type="checkbox"/>				

21 Proposed Casing and Cement Program

Hole Size	Casing Size	Casing weight/foot	Setting Depth	Sacks of Cement	Estimated TOC
17-1/2"	13-3/8"	48#	450'	350	Surface
12-1/4"	9-5/8"	36#	4,600'	500	2,000'
8-1/2"	5-1/2"	17#	13,500'	320	9,500'

22. Describe the proposed program. If this application is to DEEPEN or PLUG BACK, give the data on the present productive zone and proposed new productive zone. Describe the blowout prevention program, if any. Use additional sheets if necessary.

Drill, case and complete well in the Morrow, Atoka, Cisco, Bo "C", Wolfcamp or Queen formation

BOP'S include: 1) Hydrill double Ram 13-5/8" x 3000 psi

2) Double Ram 13-5/8" x 3000 psi

3) Choke Manifold 4" x 3000 psi

4) Five Station accumulator closing unit with remote control

H₂S Monitoring Equipment will be on location from Intermediate casing to TD.

Mud program attached.

23 I hereby certify that the information given above is true and complete to the best of my knowledge and belief. I further certify that the drilling pit will be constructed according to NMOC guidelines ☒, a general permit ☐, or an (attached) alternative OCD-approved plan ☐.

Printed name: Randell K. Ford

Title: Consultant

E-mail Address: Sandra@rkford.com

Date: August 11, 2004

Phone: 432-682-0440

OIL CONSERVATION DIVISION

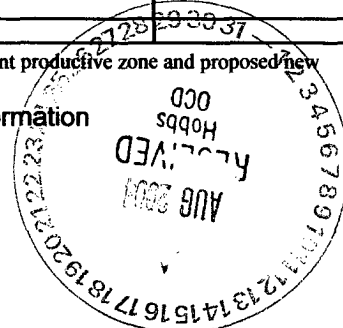
Approved by:

Title:

Approval Date:

Expiration Date:

Conditions of Approval Attached ☐



State of New Mexico

DISTRICT I

1625 N. FRENCH DR., HOBBS, NM 88240

Energy, Minerals and Natural Resources Department

DISTRICT II

1301 W. GRAND AVENUE, ARTESIA, NM 88210

DISTRICT III

1000 Rio Brazos Rd., Aztec, NM 87410

DISTRICT IV

1220 S. ST. FRANCIS DR., SANTA FE, NM 87505

OIL CONSERVATION DIVISION

1220 SOUTH ST. FRANCIS DR.

Santa Fe, New Mexico 87505

Form C-102

Revised JUNE 10, 2003

Submit to Appropriate District Office

State Lease - 4 Copies

Fee Lease - 3 Copies

WELL LOCATION AND ACREAGE DEDICATION PLAT

☐ AMENDED REPORT

API Number 30-025-36822	Pool Code 79420	Pool Name KEMNITZ; AT-MOR SOUTH (GAS)
Property Code 34208	Property Name SOUTH KEMNITZ 18 STATE	
OGRID No. 224400	Operator Name EDGE PETROLEUM OPERATING COMPANY, INC.	Well Number 1
		Elevation 4156'

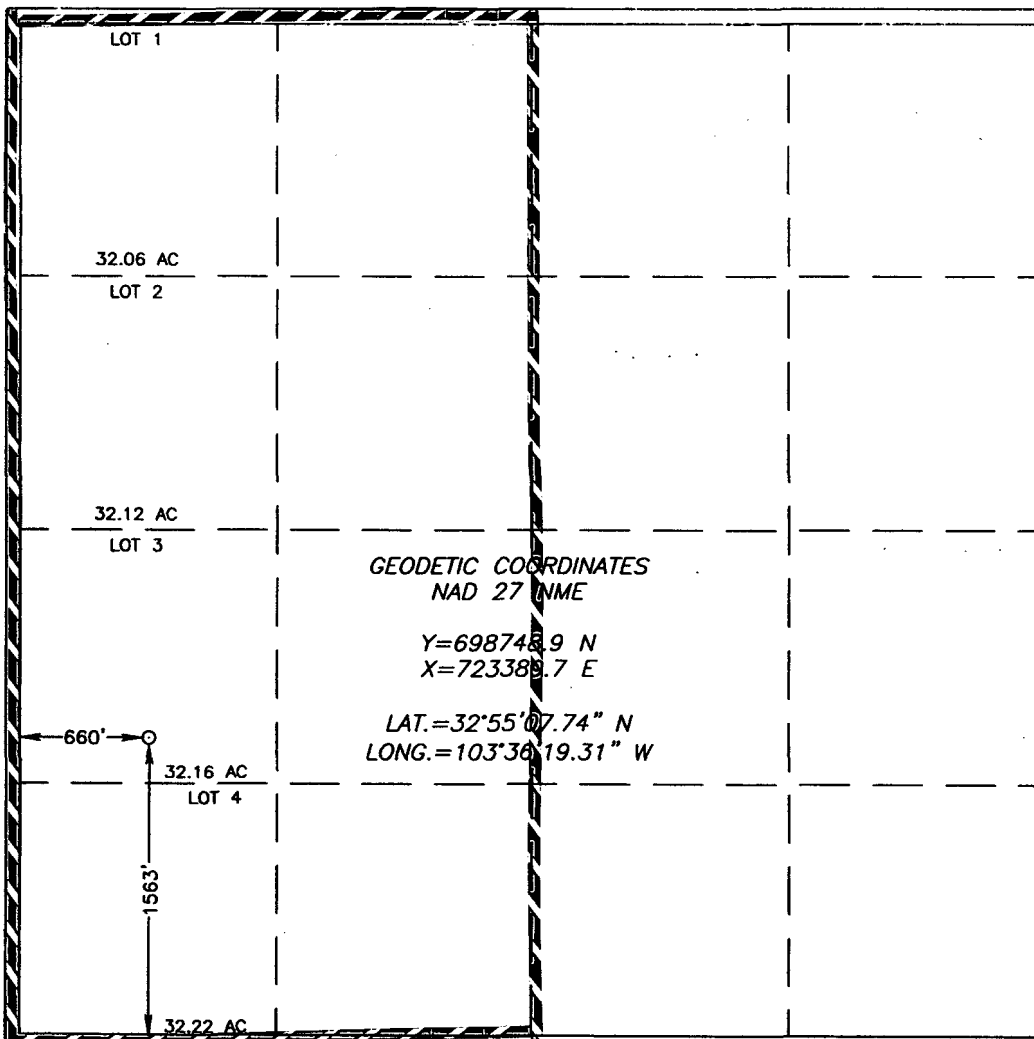
Surface Location

UL or lot No.	Section	Township	Range	Lot Idn	Feet from the	North/South line	Feet from the	East/West line	County
3	18	16-S	34-E		1563'	SOUTH	660'	WEST	LEA

Bottom Hole Location If Different From Surface

UL or lot No.	Section	Township	Range	Lot Idn	Feet from the	North/South line	Feet from the	East/West line	County
Dedicated Acres	Joint or Infill	Consolidation Code	Order No.						

NO ALLOWABLE WILL BE ASSIGNED TO THIS COMPLETION UNTIL ALL INTERESTS HAVE BEEN CONSOLIDATED OR A NON-STANDARD UNIT HAS BEEN APPROVED BY THE DIVISION



OPERATOR CERTIFICATION

I hereby certify the the information contained herein is true and complete to the best of my knowledge and belief.

Randell K. Ford
Signature

Randell K. Ford

Printed Name
Consultant

Title
August 6, 2004

Date

SURVEYOR CERTIFICATION

I hereby certify that the well location shown on this plat was plotted from field notes of actual surveys made by me or under my supervision, and that the same is true and correct to the best of my belief.

JULY 28, 2004

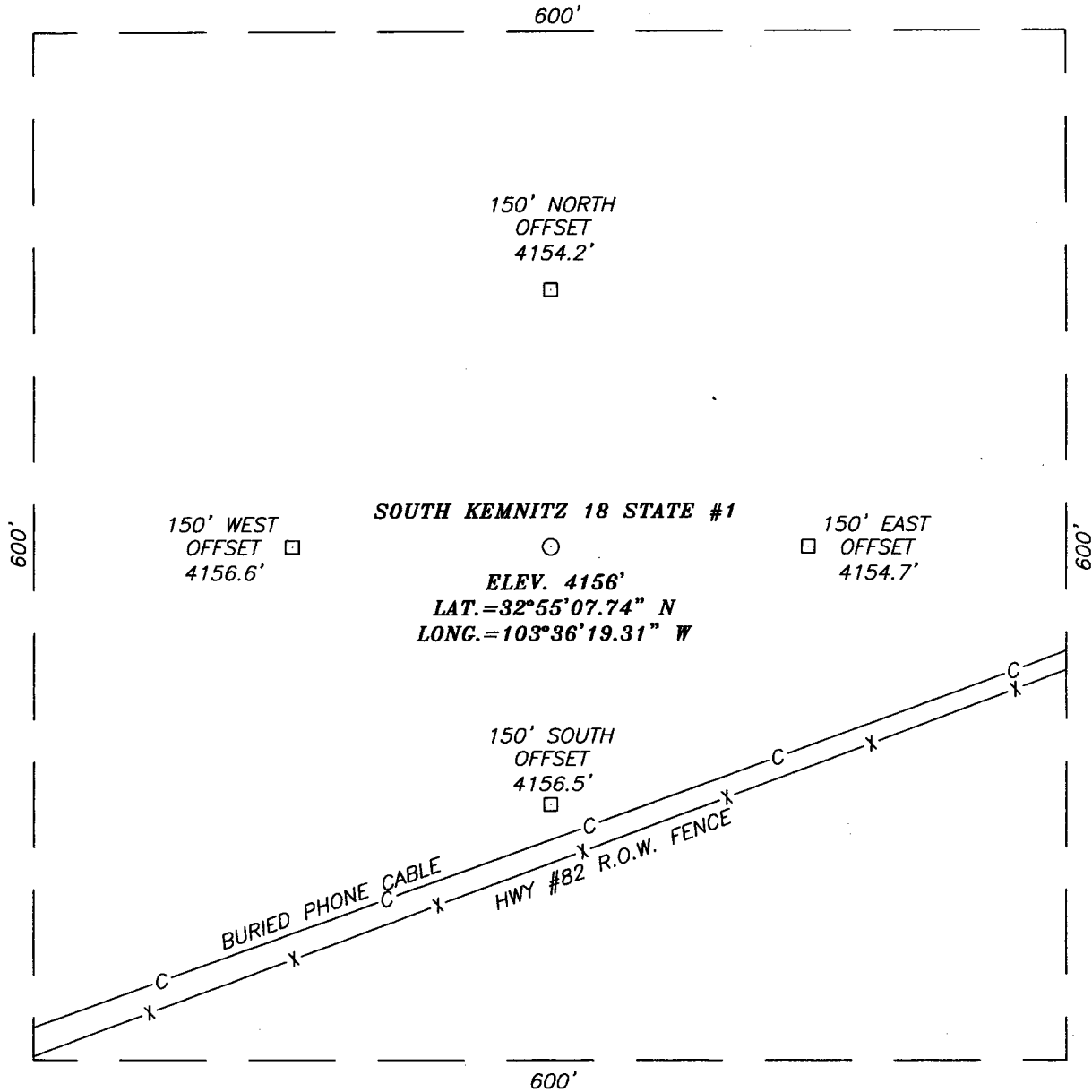
Date Surveyed LA

Signature & Seal of
Professional Surveyor

Gary J. Edmon
04.11.0943

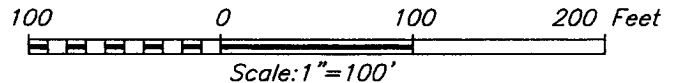
Certificate No. GARY.EDMON 12641

SECTION 18, TOWNSHIP 16 SOUTH, RANGE 34 EAST, N.M.P.M.,
LEA COUNTY, NEW MEXICO



DIRECTIONS TO LOCATION

FROM U.S. HWY #82 AT MILE MARKER #156 GO NORTH THRU CATTLEGUARD AND TURN RT. AND GO 660' ALONG HWY. R-O-W FNC. WELL LOCATION IS APPROX. 160' NORTH.



EDGE PETROLEUM OPERATING COMPANY, INC.

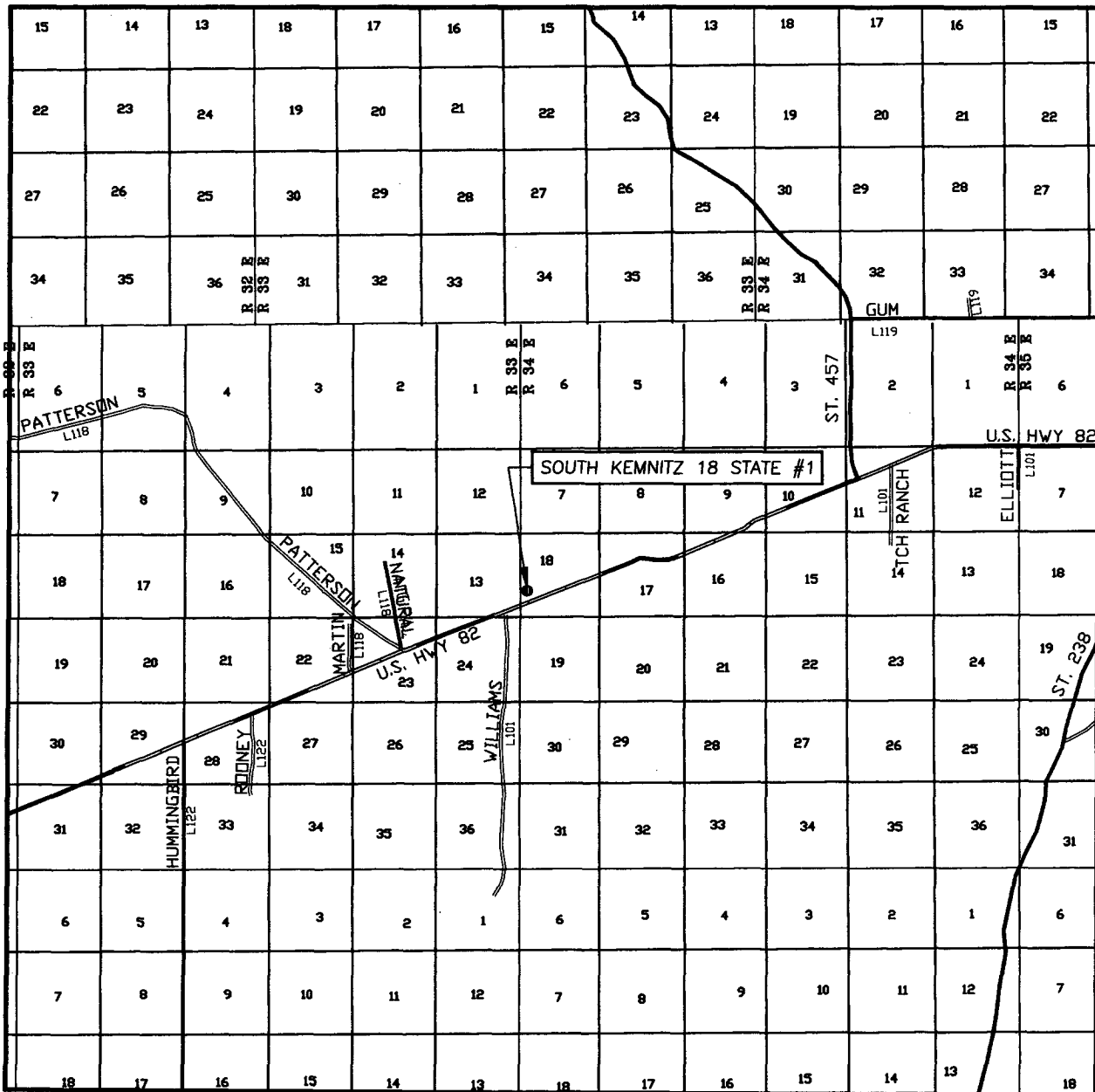
SOUTH KEMNITZ 18 STATE #1 WELL
LOCATED 1563 FEET FROM THE SOUTH LINE
AND 660 FEET FROM THE WEST LINE OF SECTION 18,
TOWNSHIP 16 SOUTH, RANGE 34 EAST, N.M.P.M.,
LEA COUNTY, NEW MEXICO.

Survey Date: 7/28/04		Sheet 1 of 1 Sheets	
W.O. Number: 04.11.0943		Dr By: LA	Rev 1:N/A
Date: 8/02/04	Disk: CD#3	04110943	Scale: 1"=100'



PROVIDING SURVEYING SERVICES
SINCE 1946
JOHN WEST SURVEYING COMPANY
412 N. DAL PASO
HOBBS, N.M. 88240
(505) 383-3117

VICINITY MAP



SCALE: 1" = 2 MILES

SEC. 18 TWP. 16-S RGE. 34-E

SURVEY N.M.P.M.

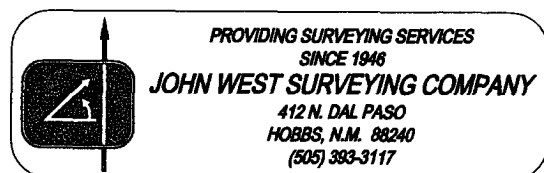
COUNTY LEA

DESCRIPTION 1563' FSL & 660' FWL

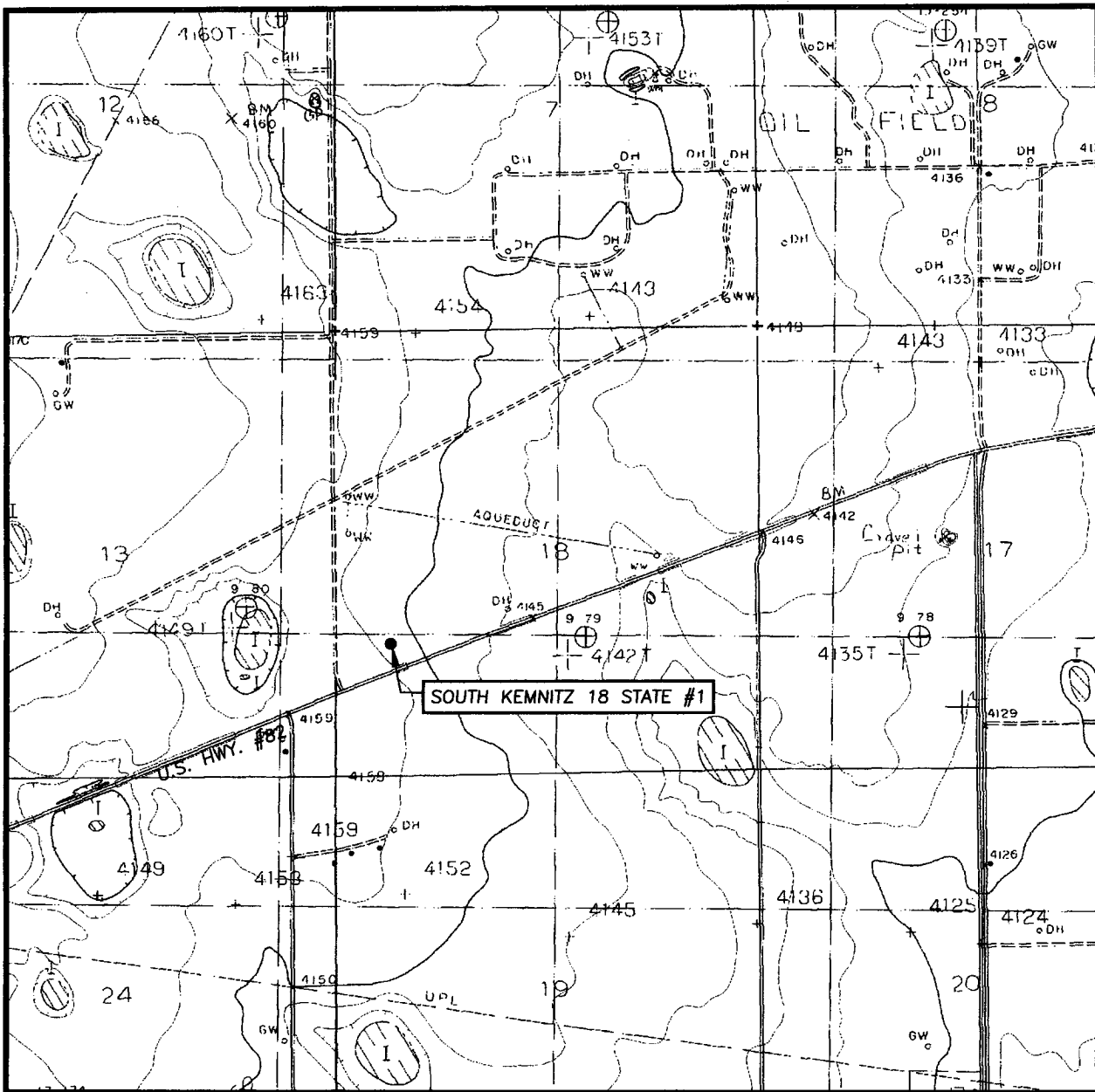
ELEVATION 4156'

EDGE PETROLEUM
OPERATOR OPERATING COMPANY, INC.

LEASE SOUTH KEMNITZ 18 STATE



LOCATION VERIFICATION MAP



SCALE: 1" = 2000'

CONTOUR INTERVAL:
BUCKEYE NE, N.M. - 10'

SEC. 18 TWP. 16-S RGE. 34-E

SURVEY N.M.P.M.

COUNTY EDDY

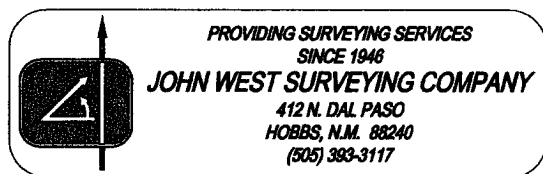
DESCRIPTION 1563' FSL & 660' FWL

ELEVATION 4156'

OPERATOR EDGE PETROLEUM
OPERATING COMPANY, INC.

LEASE SOUTH KEMNITZ 18 STATE

U.S.G.S. TOPOGRAPHIC MAP
BUCKEYE NE, N.M.





Newpark Drilling Fluids, LLC



Edge Petroleum Operating Company Inc.
Kemnitz "18" State No. 1
Section 18 , T-16-S, R-34-E
Lea County, New Mexico

Mud Program Summary

<u>Depth</u>	<u>Hole Size</u>	<u>Casing Size</u>	<u>Mud Wt.</u>	<u>Viscosity</u>	<u>Fluid Loss</u>	<u>pH</u>
0' – 450'	17-1/2"	13-3/8"	8.6-9.0	34-36	N/C	N/C
450' – 4,600'	12-1/4"	9-5/8"	9.0-10.4	32-34	N/C	N/C
4,600' - 8, 500'	8-1/2"	-	8.4-8.5	28-29	N/C	9-10
8,500' – 9,800'	8-1/2"	-	9.4-9.5	28-29	N/C	9-10
9,800' – 13,500'	8-1/2"	5-1/2"	9.5-10.0	30-45	6-15	9-10

Potential Problems

Surface Interval 0 – 450'

- Moderate seepage
- Poorly consolidated formations, may require higher than normal viscosity.

Intermediate Interval 450' – 4,600'

- Moderate seepage.
- Red bed
- Evaporative Salts.

1st Open Hole Interval 4,600' – 8,500'

- Severe seepage.
- Deviation.

2nd Open Hole Interval 8,500' – 9,800'

- Severe seepage.
- Deviation.

Production Hole Interval 9,800' – 13,500'

- Moderate seepage.
- Water sensitive sand.
- Abnormal pressure development Lower Wolfcamp to Total Depth.
- Deviation.