

District I

1625 N. French Dr., Hobbs, NM 88240

District II

1301 W. Grand Ave., Artesia, NM 88210

District III

1000 Rio Brazos Rd., Aztec, NM 87410

District IV

1220 S. St. Francis Dr., Santa Fe, NM
87505

State of New Mexico
Energy, Minerals and Natural Resources

OIL CONSERVATION DIVISION
1220 South St. Francis Dr.
Santa Fe, NM 87505

Form C-103
Revised June 10, 2003

SUNDRY NOTICES AND REPORTS ON WELLS (DO NOT USE THIS FORM FOR PROPOSALS TO DRILL OR TO DEEPEN OR PLUG BACK TO A DIFFERENT RESERVOIR. USE "APPLICATION FOR PERMIT" (FORM C-101) FOR SUCH PROPOSALS.)		WELL API NO. 30-025-09631
1. Type of Well: Oil Well <input type="checkbox"/> Gas Well <input type="checkbox"/> Other <input checked="" type="checkbox"/> DHC Injection Well		5. Indicate Type of Lease STATE <input type="checkbox"/> FEE <input checked="" type="checkbox"/>
2. Name of Operator SDG Resources L. P.		6. State Oil & Gas Lease No. 141560
3. Address of Operator P. O. Box 1390 Montrose, CO 81402		7. Lease Name or Unit Agreement Name COOPER JAL UNIT
4. Well Location Unit Letter <u>C</u> : <u>660</u> feet from the <u>NORTH</u> line and <u>1980</u> feet from the <u>WEST</u> line Section <u>24</u> Township <u>24-S</u> Range <u>36-E</u> NMPM LEA County		8. Well Number 120
11. Elevation (Show whether DR, RKB, RT, GR, etc.) 3326' (KB)		9. OGRID Number 193003
10. Pool name or Wildcat JALMAT: 7RVRS, YATES; LANGLIE MATTIX: 7RVRS, QUEEN, GRAYBURG		

12. Check Appropriate Box to Indicate Nature of Notice, Report or Other Data

NOTICE OF INTENTION TO:

PERFORM REMEDIAL WORK ☐ PLUG AND ABANDON ☐

TEMPORARILY ABANDON ☐ CHANGE PLANS ☐

PULL OR ALTER CASING ☐ MULTIPLE COMPLETION ☐

OTHER: ☐

SUBSEQUENT REPORT OF:

REMEDIAL WORK ☐ ALTERING CASING ☐

COMMENCE DRILLING OPNS. ☐ PLUG AND ABANDONMENT ☐

CASING TEST AND CEMENT JOB ☐

OTHER: Cleaned out to PBTD at 3545' ☒

13. Describe proposed or completed operations. (Clearly state all pertinent details, and give pertinent dates, including estimated date of starting any proposed work). SEE RULE 1103. For Multiple Completions: Attach wellbore diagram of proposed completion or recompletion.

Pulled injection string (92 - 2 3/8" IPC tubing) and packer (4" x 2 3/8" Baker Model AD-1).

Ran in hole with 3 1/4" bit on 2 3/8" work string.

Cleaned out to 3575' - PBTD.

Pulled out of hole and laid down 2 3/8" work string, and 3 1/4" bit.

RIH 4" x 2 3/8" Baker Model AD-1 tension packer. Hydrotest 92 joints of internally plastic coated 2 3/8" tubing to 6000#.

Circulated with inhibited packer fluid plus 100 barrels of 2 % KCl water.

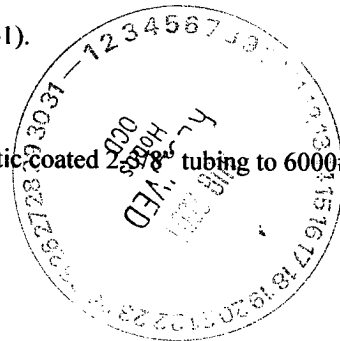
Set packer at 2940' with 16,000# tension.

Performed mechanical integrity test. Test annulus for 14 minutes to 350 psig - passed.

Pulled pressure chart for OCD filing. OCD Field Rep witnessed the MIT.

Placed well on injection at 300 bwpd at 480 psig.

Maximum pressure allowed - 600 psig.



I hereby certify that the information above is true and complete to the best of my knowledge and belief.

SIGNATURE Domingo Carrizales TITLE Sr. Petroleum Engineer DATE 8/16/04

Type or print name Domingo Carrizales E-mail address: domingo@sdgresources.com Telephone No. 432-550-7580

(This space for State use)

APPROVED BY Hayward Wink TITLE OG FIELD REPRESENTATIVE II/STAFF MANAGER DATE AUG 18 2004

Conditions of approval, if any

WELLBORE SCHEMATIC AND HISTORY

CURRENT COMPLETION SCHEMATIC

Surface Csg
Hole Size: 12 1/4 in
Csg. Size: 8 5/8 in
Set @: 315 ft
Sxs Cmt: 150
Circ: Yes
TOC @: surf
TOC by: circ

Production Liner
Hole Size: in
Csg. Size: 4 in
Top: 2854 ft
Btm: 3604 ft
Sxs Cmt: 45
Circ: Yes
TOC @: TOL
TOC by: Circ

Production Csg.
Hole Size: 7 5/8 in
Csg. Size: 5 1/2 in
Set @: 3000 ft
Sxs Cmt: 650
Circ: No
TOC @: 70 ft f / surf.
TOC by: calc.

PBTD: 3574 ft
TD: 3604 ft

OH ID: 4 3/4 in behind 4" liner

LEASE NAME

Cooper Jal Unit

WELL NC

120 W (Formerly No. 236)

STATUS: Active Water Injector

API# 30-025-09631

LOCATION: 660 FNL & 1980 FWL, Sec 24, T - 24S, R - 36E, Lee County, New Mexico

SPUD DATE: 11/11/51 TD 3604 KB 3,326' DF

INT. COMP. DATE: 11/11/51 PBTD 3574 GL 3,315'

ELECTRIC LOGS:

GR-N from surface - 3195' (11-6-51 Lane Wells)
GR-CCL (5-20-94 Halliburton)
GR-N from 2000 - 3573' (9-1-71 Dresser Atlas)
GR-N from 2900 - 3600' (12-12-54 PGAC)

GEOLOGICAL DATA

CORES, DST'S or MUD LOGS:

Core analysis from 3444 - 3512' (12-15-54)

HYDROCARBON BEARING ZONE DEPTH TOPS:

CASING PROFILE

SURF. 8 5/8" - 29.75#, J-55 set @ 315' Cmt'd w/150 sxs - circ cmt to surf.

PROD. 5 1/2" - 15# (0-1600') & 17# (1600 - 3000') J-55 set @ 3000' Cmt'd w/650 sxs - TOC @ 70' from surf.

LINER 4" - 9.5#, J-55 FJ csg. set from 2854 - 3604' Cmt w/45 sxs - Circ cmt out TOL

CURRENT PERFORATION DATA

CSG. PERFS:

OPEN HOLE:

3000 - 3604'

3011 - 3270' w/1 spf (81 holes)
3156 - 76' w/2 spf (40 holes)
3408 - 92' w/1 spf (37 holes)
3500 - 12' w/4 spf (68 holes)

TUBING DETAIL

4/26/1994

ROD DETAIL

Length (ft)

Detail

11 KB
2945 95 jts - 2 3/8" 4.7#, IPC, J-55, 8rd EUE tbq.
3 1- 4" x 2 3/8" Baker Model AD-1 packer
2959 btm

WELL HISTORY SUMMARY

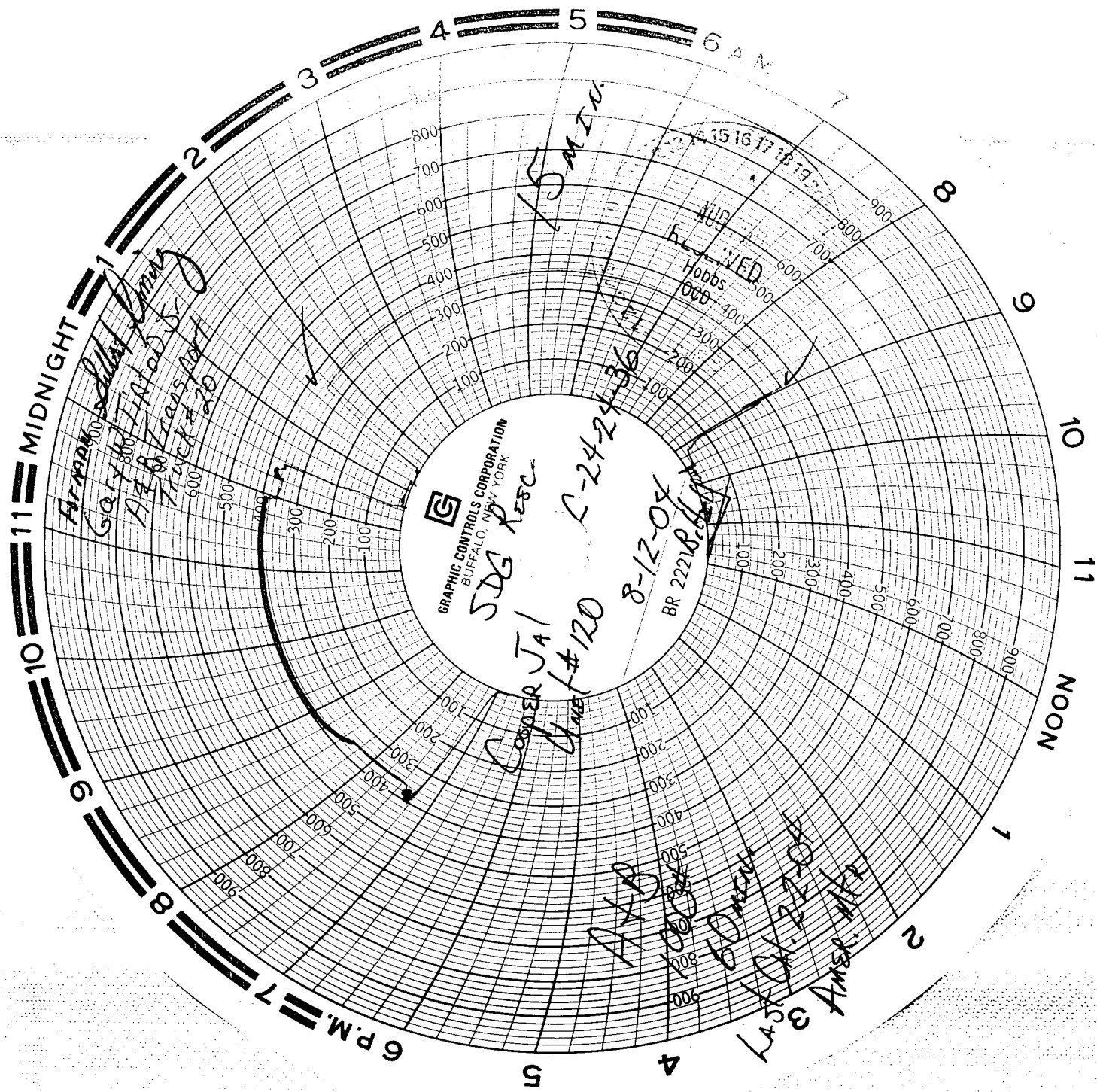
11-Nov-51 Initial completion interval: 3000 - 3195' (Yates OH). Frac'd w/1,500 gals kerosene, 500#s Napalm, 800#s Ottawa sand & 70 bbls oil. IP = 207 bopd, 0 bwpd & 337 Mcf/gpd (flowing)
19-Dec-54 Deepened to 3604'. Set 4 1/2" liner from 2854'-3604'. Perf'd (Langlie Mattix) 3500'-12' w/ 4 spf (68 holes). Frac'd w/ 6,000 gals lse oil & 6,000#s sand. IP=581.2 bopd, 0 bwpd, & 389 Mcf/gpd (flowing)
7-Oct-71 Converted to Dual Injector. Perf'd (Jalmet) 3011 - 3270 w/1 spf (81 holes) & (Langlie Mattix) 3408 - 92' w/ 1 spf (37 holes). Acdz 3500-12' w/1,800 gals. Acdz 3011'-3270' w/3,860 gals. RIH w/dual pkrs and initiated injection.
14-Oct-88 Dual pkr. Equipment plugged up. Well Shut-in.
26-Apr-94 Remove injection equipment. (extensive fishing operations). C/O to 3574' - Drig on junk. Ran GR-CCL Perf'd 3156'-76' w/2 spf (40 - .042" dia holes). TIH w/ pkr on 2 3/8" IPC tbq. Set pkr @ 2940'. Placed on injection: 722 bwpd @TP= 800 psi.
14-Feb-02 Tag TD using SL unit (1 1/4" x 5' sinker bar). Tag fill @ 3046' (658' of fill)
9-Aug-04 POOH with 2 3/8" IPC tubing and 4" x 2 3/8" Baker Model AD-1 packer. RIH with 3 7/8" skirted bit and 6 - 3 1/8" drill collars on 2 3/8" work string. Tagged top of liner at 2,854'. bit would go inside liner. POOH and laid down 6 - 3 1/8" drill collars and 3 7/8" bit. RIH with 3 1/4" bit on 2 3/8" work string, tagged at 3070'. Cleaned out to PBTD at 3575'. Circulated iron carbonate scale. POOH laying down 2 3/8" work string and 3 1/4" bit. RIH with redressed 2 3/8" x 4" Baker Model AD-1 packer to 2945'. Hydrotest injection string to 6,000 psig. Circulated with inhibited packer fluid, set packer. Test annulus for 15 minutes to 350 psig - held. OCD Field Rep was present to witness the MIT. Before injectivity: 330 bwpd at 1000 psig. After injectivity: 300 bwpd at 480 psig.

PREPARED BY:

Larry S. Adams D. Camzales

UPDATED:

13-Aug-04



GRAPHIC CONTROLS CORPORATION
BUFFALO, N.Y. YORK

COOPER JAL
SDG RESC.
C-2424-36
8-12-04
BR 22218.11

AXD
LAX 22-04
AMER. AIR

RECEIVED
Hobbs

15 MIN.