

Submit 3 Copies To Appropriate District Office

District I

1625 N. French Dr., Hobbs, NM 88240

District II

1301 W. Grand Ave., Artesia, NM 88210

District III

1000 Rio Brazos Rd., Aztec, NM 87410

District IV

1220 S. St. Francis Dr., Santa Fe, NM 87505

State of New Mexico
Energy, Minerals and Natural Resources

Form C-103
Revised June 10, 2003

OIL CONSERVATION DIVISION
1220 South St. Francis Dr.
Santa Fe, NM 87505

WELL API NO.

30-025-09651

5. Indicate Type of Lease

STATE ☐

FEE ☒

6. State Oil & Gas Lease No.

141560

7. Lease Name or Unit Agreement Name
COOPER JAL UNIT

8. Well Number

226

9. OGRID Number

193003

10. Pool name or Wildcat JALMAT:
7RVRS, YATES, TANSIL

SUNDRY NOTICES AND REPORTS ON WELLS

(DO NOT USE THIS FORM FOR PROPOSALS TO DRILL OR TO DEEPEN OR PLUG BACK TO A DIFFERENT RESERVOIR. USE "APPLICATION FOR PERMIT" (FORM C-101) FOR SUCH PROPOSALS.)

1. Type of Well:

Oil Well ☐

Gas Well ☐

Other ☐

Injection Well ☒

2. Name of Operator

SDG Resources L. P.

3. Address of Operator

P. O. Box 1390

Montrose, CO 81402

4. Well Location

Unit Letter A : 330 feet from the NORTH line and 330 feet from the EAST line

Section 25

Township 24-S

Range 36-E

NMPM

LEA

County

11. Elevation (Show whether DR, RKB, RT, GR, etc.)
3,297' (KB)

12. Check Appropriate Box to Indicate Nature of Notice, Report or Other Data

NOTICE OF INTENTION TO:

PERFORM REMEDIAL WORK ☐

PLUG AND ABANDON ☐

TEMPORARILY ABANDON ☐

CHANGE PLANS ☐

PULL OR ALTER CASING ☐

MULTIPLE COMPLETION ☐

OTHER: ☐

SUBSEQUENT REPORT OF:

REMEDIAL WORK ☐

ALTERING CASING ☐

COMMENCE DRILLING OPNS. ☐

PLUG AND ABANDONMENT ☐

CASING TEST AND CEMENT JOB ☐

OTHER: Cleaned out Jalmat Injector. ☒

13. Describe proposed or completed operations. (Clearly state all pertinent details, and give pertinent dates, including estimated date of starting any proposed work). SEE RULE 1103. For Multiple Completions: Attach wellbore diagram of proposed completion or recompletion.

Ran in hole with 4 3/4" bit and 6 - 3 1/8" drill collars on 2 7/8" work string.

Drilled cement at 2925' and CIBP at 2960'.

Cleaned out to TD'.

Pulled out of hole and laid down 2 3/8" work string, 6 - 3 1/8" and 4 3/4" bit.

RIH 5 1/2" x 2 3/8" Baker AD-1 tension packer to 2913'.

Hydrotested internally plastic coated 2-3/8" tubing to 6,000 psig..

Circulated with inhibited packer fluid plus 80 barrels of 2 % KCl water.

Set packer at +/- 2913' with 20,000# tension.

Performed mechanical integrity test - test annulus to 520 psig.

Pulled pressure chart for NMOCD filing.

Placed well on injection: 300 BWPD at 120 psig.

Maximum pressure allowed - 600 psig.



I hereby certify that the information above is true and complete to the best of my knowledge and belief.

SIGNATURE

Domingo Carrizales

TITLE Sr. Petroleum Engineer

DATE 8/31/04

Type or print name Domingo Carrizales

E-mail address: domingo@sdgresources.com

Telephone No. 432-550-7580

(This space for State use)

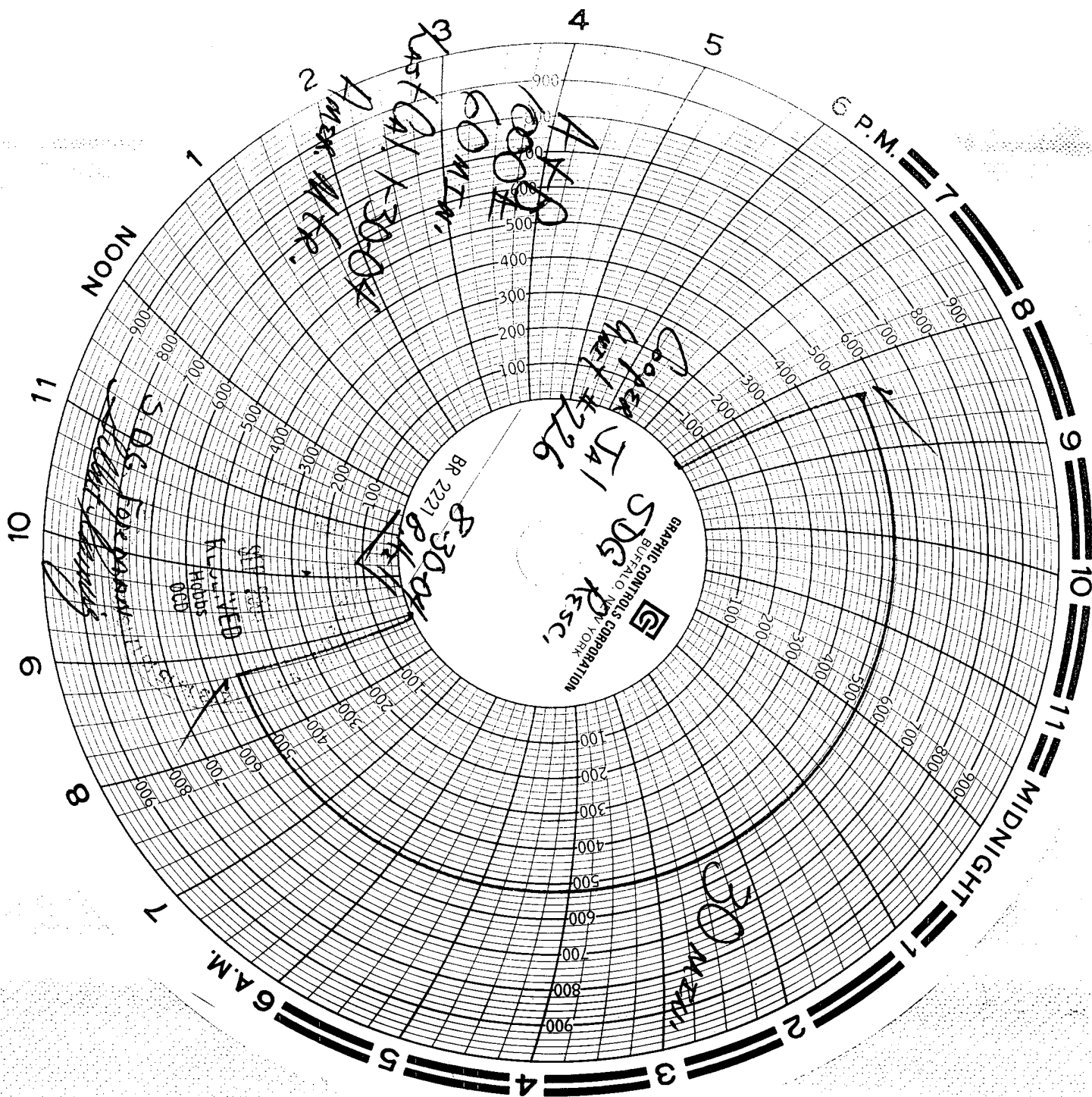
APPROVED BY

Chris Williams

TITLE DISTRICT SUPERVISOR/GENERAL MANAGER

DATE SEP 01 2004

Conditions of approval, if any:



WELLBORE SCHEMATIC AND HISTORY

CURRENT COMPLETION SCHEMATIC

Surface Csg
Hole Size: 11 in
Csg. Size: 8 5/8 in
Set @: 310 ft
Sxs Cmt: 100
Circ: Yes
TOC @: surf
TOC by: circ

DV Tool @ 1137'

TOC @ 1935'
By Calc.

Pkr at 2913'

OH Interval
2989 - TD'

Production Csg.
Hole Size: 7 7/8 in
Csg. Size: 5 1/2 in
Set @: 2989 ft
Sxs Cmt: 250
Circ: No
TOC @: 80 ft surf.
TOC by: calc.

PBDT: 2925 ft
TD: ft

OH ID: 4 3/4 in

LEASE NAME

Cooper Jal Unit

WELL NO.

226 WIW

STATUS

Active

Water Injector

LOCATION: 330 FNL & 330 FEL, Sec 25, T - 24S, R - 36E, Lee County, New Mexico

SPUD DATE:

TD

INT. COMP. DATE:

05/16/50

PBDT

2925

KB

3,297

DF

GL

3,287

ELECTRIC LOGS:

Ejecto Log Tracer - MicroCaliper (11-9-76 Cardinal Surveys Co.)

HYDROCARBON BEARING ZONE DEPTH TOPS:

Yates @ 2995'

CORES, DST'S or MUD LOGS:

CASING PROFILE

SURF. 8 5/8" - 28#, J-55 set @ 310' Cmt'd w/100 sxs - circ cmt to surf.

PROD. 5 1/2" - 15#, J-55 set @ 2989' Cmt'd w/200 sxs - TOC @ 1935' f/ surf by calc. DV tool @ 1137' - pmp 200 sxs - TOC @ 80' f/ surf by calc.

LINER None

CURRENT PERFORATION DATA

CSG. PERFS:

OPEN HOLE:

2989 - TD'

TUBING DETAIL

8/27/2004

ROD DETAIL

2911' 92 joints of 2 3/8" IPC J-55, 4.7#
2' 5 1/2" x 2 3/8" Baker Model AD-1 pkr
2913'

WELL HISTORY SUMMARY

18-May-50 Initial completion interval: (Yates OH) 2989 - 3223'. No stimulation. IP = 88 bopd, 0 bwopd, & 125 Mcf/gpd (flowing)
29-Dec-68 C/O fill from 3156 - 3214' (58')
8-Apr-69 C/O fill from 3140 - 3214' (74')
20-May-71 CONVERTED TO WATER INJECTOR: C/O from 3190 - 3223 (33'). Swedged out 5 1/2" csg at 337', 481', 515', 1064', and 1287'. Ran pkr on 2 3/8" CL tbg. Set pkr @ 2933'.
9-Nov-76 Ran injection profile - had 220' of fill. Identified 100% injection below 3003'.
24-Nov-76 C/O fill from 3003 - 3223' (223'). Jet washed from 3223 - 2989'. Encountered tight spot in 5 1/2" csg @ 1287'.
12-Feb-90 C/O fill to 3,223'.
15-Jun-95 Deepen to 3600'. Acid'd OH (2989 - 600') w/ 5,000 gals 15% NEFE HCL. Returned well to injection (DHC - Jalmat & Langile Matrix). Max surface injection pressure = 597 psi.
17-Oct-00 Set CIBP @ 2960'. Test CIBP & csg to 590 psi. OK. Displace well with pkr fluid. Dmp 35' cmt on top of CIBP @ 2960. PBDT at 2925'. NMOCD representative on location. RD & clean location. Well TA'd 10-20-2000.
23-Aug-04 POOH with IPC injection tubing and 5 1/2" x 2 3/8" Baker Model AD-1 packer. RIH with 4 3/4" bit and 6 - 3 1/8" drill collars on 2 7/8" work string. Drilled out cement and CIBP at 2960'. Cleaned open hole to 3240'. RIH with 5 1/2" x 2 3/8" IPC Baker Model AD-1 pkr. Hydrotest tubing to 6,000#. Landed packer at 2913', circulated 80 bbls of fresh water plus 10 gallons of pkr fluid. Set packer and test annulus to 520 psig for 30 minutes - held. Pulled chart for NMOCD. OCD Rep witnessed the MIT test. Injection: 300 BWPD at 120 psig. Status change from inactive to active injector.



PREPARED BY:

Larry S. Adams

D. Carrizales

UPDATED:

31-Aug-04