

OPER. OGRID NO. 14744  
PROPERTY NO. 32654  
POOL CODE 65560  
EFF. DATE 9/2/04  
API NO. 30-025-368

District I

FORM APPROVED  
OMB No. 1004-0136  
Expires January 31, 2004

APPLICANT

1a. Type of Work: ☒ DRILL

☐ REENTER

1b. Type of Well: ☐ Oil Well ☒ Gas Well ☐ Other

☒ Single Zone ☐ Multiple Zone

2. Name of Operator

Mewbourne Oil Company - 14744

3a. Address

PO Box 5270 Hobbs, NM 88240

3b. Phone No. (include area code)

505-393-5905

4. Location of Well (Report location clearly and in accordance with any State requirements. \*)

At surface 660' FNL & 1375' FEL Unit B

At proposed prod. zone

14. Distance in miles and direction from nearest town or post office\*

15 miles SE of Loco Hills, NM

15. Distance from proposed\*

location to nearest  
property or lease line, ft.  
(Also to nearest drig. unit line, if any) 660'

16. No. of Acres in lease

80

17. Spacing Unit dedicated to this well

80

18. Distance from proposed location\*  
to nearest well, drilling, completed,  
applied for, on this lease, ft.

1320'

19. Proposed Depth

12000'

20. BLM/BLA Bond No. on file

NM1693, Nationwide

21. Elevations (Show whether DF, KDB, RT, GL, etc.)

3789' GL

22. Approximate date work will start\*

as approved by BLM

23. Estimated duration

45

24. Attachments

**Captain Controlled Water Basin**

The following, completed in accordance with the requirements of Onshore Oil and Gas Order No.1, shall be attached to this form:

1. Well plat certified by a registered surveyor.

2. A Drilling Plan.

3. A Surface Use Plan (if the location is on National Forest System Lands, the  
SUPO shall be filed with the appropriate Forest Service Office).

4. Bond to cover the operations unless covered by an existing bond on file (see  
Item 20 above).

5. Operator certification.

6. Such other site specific information and/or plans as may be required by the  
authorized officer.

25. Signature

*[Signature]*

Name (Printed/Typed)

NM Young

Date

06/17/04

Title

Hobbs District Manager

Approved by (Signature)

/s/ Joe G. Lara

Name (Printed/Typed)

/s/ Joe G. Lara

Date

AUG 30 2004

Title

FIELD MANAGER

Office

CARLSBAD FIELD OFFICE

Application approval does not warrant or certify that the applicant holds legal or equitable title to those rights in the subject lease which would entitle the applicant to conduct operations thereon.

Conditions of approval, if any, are attached.

**APPROVAL FOR 1 YEAR**

Title 18 U.S.C. Section 1001 and Title 43 U.S.C. Section 1212, make it a crime for any person knowingly and willfully to make to any department or agency of the United States any false, fictitious or fraudulent statements or representations as to any matter within its jurisdiction.

\*(Instructions on reverse)

DECLARED WATER BASIN,  
CEMENT BEHIND THE 13 3/8"  
CASING MUST BE CIRCULATED

DECLARED WATER BASIN,  
CEMENT BEHIND THE 9 5/8"  
CASING MUST BE CIRCULATED

**APPROVAL SUBJECT TO  
GENERAL REQUIREMENTS AND  
SPECIAL STIPULATIONS  
ATTACHED**

Kz

## OIL CONSERVATION DIVISION

P.O. Box 2088  
Santa Fe, New Mexico 87504-2088☐ AMENDED REPORT

## WELL LOCATION AND ACREAGE DEDICATION PLAT

API Number <b>30-025-368</b>	Pool Code <b>65560</b>	Pool Name <b>Young Strawn</b>
Property Code <b>32654</b>	Property Name <b>SF "17" FEDERAL COM.</b>	Well Number <b>4</b>
OGRID No. <b>14744</b>	Operator Name <b>MEWBOURNE OIL COMPANY</b>	Elevation <b>3789</b>

## Surface Location

UL or lot No.	Section	Township	Range	Lot Idn	Feet from the	North/South line	Feet from the	East/West line	County
<b>B</b>	<b>17</b>	<b>18S</b>	<b>32E</b>		<b>660</b>	<b>NORTH</b>	<b>1375</b>	<b>EAST</b>	<b>LEA</b>

## Bottom Hole Location If Different From Surface

UL or lot No.	Section	Township	Range	Lot Idn	Feet from the	North/South line	Feet from the	East/West line	County
Dedicated Acres <b>80</b>		Joint or Infill	Consolidation Code		Order No.				

NO ALLOWABLE WILL BE ASSIGNED TO THIS COMPLETION UNTIL ALL INTERESTS HAVE BEEN CONSOLIDATED  
OR A NON-STANDARD UNIT HAS BEEN APPROVED BY THE DIVISION

		Lease #NM106717		<b>OPERATOR CERTIFICATION</b>  I hereby certify the the information contained herein is true and complete to the best of my knowledge and belief.  Signature <u><i>Young</i></u> NM Young Printed Name Hobbs Manager Title 06/17/04 Date	
				<b>SURVEYOR CERTIFICATION</b>  I hereby certify that the well location shown on this plat was plotted from field notes of actual surveys made by me or under my supervision, and that the same is true and correct to the best of my belief.  6/15/2004 Date Surveyed Signature & Seal of Professional Surveyor  Certificate No. Herschel E. Jones RLS 3640 17-4 GENERAL SURVEYING COMPANY	

0 330' 660' 990' 1650' 1980' 2310' 2310' 1980' 1650' 990' 660' 330' 0'

**Drilling Program**  
**Mewbourne Oil Company**  
SF "17" Federal Com #4  
660' FNL & 1375' FEL  
Section 17-T18S-R32E  
Lea County, New Mexico

**1. The estimated top of geological markers are as follows:**

Delaware	4831'
Bone Spring	6354'
Wolfcamp	9768'
Strawn	11373'
Atoka	11900'
TD	12000'

**2. Estimated depths of anticipated fresh water, oil, or gas:**

Water	Approximately 200'
Hydrocarbons	All zones below Queen

**3. Pressure control equipment:**

Two thousand psi working pressure annular BOP's will be installed on the 13-3/8" surface casing. Five thousand psi working pressure BOP's and two thousand psi working pressure Hydril will be installed on the 9-5/8" intermediate casing. Pressure tests with rig pump will be conducted prior to drilling out under all casing strings. A third party Safety Test Company will pressure test and record on chart the approved testing pressure of the BOP, Choke, Hydril, Kelly Cock Valves before we drill below the 9-5/8" casing.

BOP controls will be installed prior to drilling under surface casing and will remain in use until completion of drilling operations. BOP's will be inspected and operated daily to insure mechanical integrity and the inspection will be recorded on the daily drilling report.

Kelly cock and a sub equipped with a full opening valve sized to fit the drill pipe and collars will be available on the rig floor in the open position when the kelly is not in use.

## **Drilling Program**

**Mewbourne Oil Company**

SF "17" Fed Com #4

Page 2

### **4. Proposed casing and cementing program:**

#### **A. Casing Program:**

<u>Hole Size</u>	<u>Casing</u>	<u>Wt/Ft.</u>	<u>Grade</u>	<u>Depth</u>
17-1/2"	13-3/8"	48#	H40	0-500'
12-1/4"	9-5/8"	40#	N80/J55	0-4500'
8-3/4"	5-1/2"	17#	P110/N80	0-12000'

Minimum casing design factors: Collapse 1.125, Burst 1.0, Tensile strength 1.8.

#### **B. Cementing Program**

- i. Surface Casing: 300 sacks Class "C" light cement containing 1/2 #/sk cellophane flakes, 2% CaCl, 5 lbs/sack gilsonite. 200 sacks Class "C" cement containing 2% CaCl.
- ii. Intermediate Casing: 900 sacks 35:65 pozmix cement containing 6% gel, 5 lbs/sack gilsonite. 200 sacks Class "C" cement containing 2% CaCl.
- iii. Production Casing: 600 sacks Class "H" cement containing fluid loss additive, friction reducer additive, compressive strength enhancer, and NaCl. Shallower productive zones may be protected by utilizing a multiple stage cementing tool in the production casing below potentially productive zones and cementing with a light cement slurry.

*\*Mewbourne Oil Company reserves the right to change cement designs as hole conditions may warrant.*

### **5. Mud Program:**

<u>Interval</u>	<u>Type System</u>	<u>Weight</u>	<u>Viscosity</u>	<u>Fluid Loss</u>
0'-500'	FW spud mud	8.6-9.4	32-34	NA
500'-4500'	Brine water	10.0-10.2	28-30	NA
4500'-10700'	Cut brine water	8.8-9.2	28.30	NA
10700'-12000'	Cut brine water	9.2-9.8	32-42	8-12

(Note: Any weight above 8.6#/gallon would be to hold back Wolfcamp shale, rather than abnormal BHP.)

### **6. Evaluation Program:**

Samples: 10'samples from intermediate casing to TD  
Logging: Compensated density and dual laterlog from intermediate casing to TD  
Coring: As needed for evaluation  
Drill Stem Tests: As needed for evaluation

**Drilling Program**

**Mewbourne Oil Company**

SF "17" Fed Com #4

Page 3

**7. Downhole Conditions**

Zones of abnormal pressure:	None anticipated
Zones of lost circulation:	Anticipated in surface and intermediate holes
Maximum bottom hole temperature:	180 degree F
Maximum bottom hole pressure:	9.0 lbs/gal gradient or less

**8. Anticipated Starting Date:**

Mewbourne Oil Company intends to drill this well as soon as possible after receiving approval with approximately 45 days involved in drilling operations and an additional 10 days involved in completion operations on the project.

## **MULTI-POINT SURFACE USE AND OPERATIONS PLAN**

### **MEWBOURNE OIL COMPANY**

SF "17" Federal Com #4

660' FNL & 1375' FEL

Section 17-T18S-R32E

Lea County, New Mexico

This plan is submitted with Form 3160-3, Application for Permit to Drill, Covering the above described well. The purpose of this plan is to describe the location of the proposed well, the proposed construction activities and operations plan, the magnitude of the surface disturbance involved, and the procedures to be followed in restoring the surface so that a complete appraisal can be made of the environmental impact associated with the proposed operations.

#### **1. Existing Roads:**

- A. Exhibit #3 is a road map showing the location of the proposed well. Exhibit #3A is a topographic map showing the location of the proposed well and access road. Existing roads are highlighted in red and proposed roads are highlighted in yellow.
- B. **Directions to location: From Hobbs West on 62/180 10 miles to Junction of 62/180 & C529. Turn right on 529 & go 24 miles to Junction of C529 & Hwy 126. Turn left on Hwy 126 & go approx 3 miles (just past Double S curves) turn right thru new cattle guard onto new well location.**

#### **2. Proposed Access Road:**

- A No new road needed.

#### **3. Location of Existing Wells:**

There are producing wells within the immediate vicinity of the well site. Exhibit #4 shows the proposed well and existing wells within a one mile radius.

#### **4. Location of Existing and/or Proposed Facilities:**

- A. There are no production facilities on this lease at the present time.
- B. In the event that the well is productive, production facilities will be located on the well pad.
- C. If the well is productive, restoration plans are as follows:
  - i. The reserve pit will be back-filled after the contents of the pit are allowed to dry (within 10 months after the well is completed).
  - ii. Within 90 days of cessation of drilling and completion operations, all equipment not necessary for production operations will be removed. The location will be cleaned of all trash and junk to assure the well site is left as aesthetically pleasing as reasonably possible
  - iii. All production vessels left on location will be painted to conform with BLM painting stipulations within 180 days of installation.

**MULTI-POINT SURFACE USE AND OPERATIONS PLAN**

**MEWBOURNE OIL COMPANY**

SF 17 Federal Com #4

Page 2

**5. Location and Type of Water Supply**

The well will be drilled with a combination of fresh water and brine water based mud systems. The water will be obtained from commercial suppliers in the area and/or hauled to the location by transport trucks over existing and proposed roads as indicated in Exhibit #3.

**6. Source of Construction Materials**

All material required for construction of the drill pad and access roads will be obtained from private, state, or federal pits. The construction contractor will be solely responsible for securing construction materials required for this operation and paying any royalties that may be required on those materials.

**7. Methods of Handling Waste Disposal:**

- A. Drill cuttings not retained for evaluation purposed will be disposed of in the reserve pit.
- B. Drilling fluids will be allowed to evaporate in the reserve pit prior to closure.
- C. Water produced during operations will be disposed of in the reserve pit.
- D. If any liquid hydrocarbons are produced during operations, those liquids will be stored in suitable tanks until sold.
- E. Current regulations regarding the proper disposal of human waste will be followed.
- F. All trash, junk, and other waste materials will be stored in proper containers to prevent dispersal and will be removed to an appropriate facility within one week of cessation of drilling and completion activities.

**8. Ancillary Facilities**

There are no ancillary facilities within the immediate vicinity of the proposed well site.

**9. Well Site Layout**

- A. A diagram of the drill pad is shown in Exhibit #5. Dimensions of the pad, pits, and location of major rig components are shown.
- B. The reserve pit will be lined with a high quality plastic sheeting to prevent migration of fluids as per OCD regulations.
- C. The pad dimension of 400' X 250' have been staked and flagged.
- D. An archaeological survey has been conducted on the proposed access road and location pad.

**MULTI-POINT SURFACE USE AND OPERATIONS PLAN**

**MEWBOURNE OIL COMPANY**

SF Federal Com #4

Page 3

**10. Plans for Restoration of Surface**

- A. Upon cessation of the proposed operations, if the well is abandoned, the location and road will be ripped and re-seeded per BLM guidelines. The reserve pit area, after allowing to dry will be leveled. The entire location will be restored to the original contour as much as reasonable possible. All trash, garbage, and pit lining will be hauled to appropriate disposal to assure the location is aesthetically pleasing as reasonable possible. All restoration work will be completed within 180 days of cessation of activities.
- B. The disturbed area will be restored by re-seeding during the proper growing season with a mixture of native grasses as stipulated by the BLM.
- C. Three sides of the reserve pit will be fenced prior to and during drilling operations. The reserve pit will be fenced on the fourth side after the drilling rig is removed to prevent the endangerment of livestock. The fence will remain in place until the pit area has been leveled and restored.
- D. Upon cessation of the proposed operations, if the well is not abandoned, the reserve pit area will be treated as outlined above within the prescribed amount of time. Any additional caliche required for production facilities will be obtained from a source as described in Section 6.

**11. Surface Ownership:**

The surface is owned by: Bureau of Land Management

**12. Other Information**

- A. Topography: Refer to the archaeological report for a detailed description of flora, fauna, soil characteristics, dwellings, and historical or cultural sites.
- B. The primary use of the surface at the location is for grazing of livestock.

**13. Operator's Representative:**

- A. Through APD approval and drilling operations:

**N.M. Young, District Manager**  
Mewbourne Oil Company  
PO Box 5270  
Hobbs, NM 88241  
505-393-5905



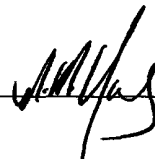
B. Through completion and production operations:

**N.M. Young, District Manager**  
Mewbourne Oil Company  
PO Box 5270  
Hobbs, NM 88241  
505-393-5905

**14. Certification**

I hereby certify that I, or persons under my direct supervision, have inspected the proposed drill site and access route; that I am familiar with the conditions which currently exist; that the statements made in this plan are to the best of my knowledge, true and correct; and the work associated with the operations proposed herein will be performed by Mewbourne Oil Company, its contractors and subcontractors, in accordance with this plan and the terms and conditions under which it is approved. This statement is subject to the provisions of 18 U.S.C. 1001 for the filing of a false statement.

Date: 6/19/04

Signature: 

NM Young  
Mewbourne Oil Company  
PO Box 5270  
Hobbs, NM 88241  
(505) 393-5905

## **Hydrogen Sulfide Drilling Operations Plan**

### **Mewbourne Oil Company**

SF "17" Federal Com #4

660' FNL & 1375' FEL

Section 17-T18S-R32E

Lea County, New Mexico

#### **1. Hydrogen Sulfide Training**

All personnel, whether regularly assigned, contracted, or employed on an unscheduled basis, will have received training from a qualified instructor in the following areas prior to entering the drilling pad area of the well:

- 1 The hazards and characteristics of hydrogen sulfide gas.
- 2 The proper use of personal protective equipment and life support systems.
- 3 The proper use of hydrogen sulfide detectors, alarms, warning systems, briefing areas, evacuation procedures.
- 4 The proper techniques for first aid and rescue operations.

Additionally, supervisory personnel will be trained in the following areas:

- 1 The effects of hydrogen sulfide on metal components. If high tensile tubular systems are utilized, supervisory personnel will be trained in their special maintenance requirements.
- 2 Corrective action and shut in procedures, blowout prevention, and well control procedures while drilling a well.
- 3 The contents of the Hydrogen Sulfide Drilling Operations Plan.

There will be an initial training session prior to encountering a known hydrogen sulfide source. The initial training session shall include a review of the site specific Hydrogen Sulfide Drilling Operations Plan.

#### **2. Hydrogen Sulfide Safety Equipment and Systems**

All hydrogen sulfide safety equipment and systems will be installed, tested, and operational prior to drilling below the intermediate casing.

1. Well Control Equipment
  - A. Flare line with automatic igniter or continuous ignition source.
  - B. Choke manifold with minimum of one adjustable choke.
  - C. Blowout preventers equipped with blind rams and pipe rams to accommodate all pipe sizes with properly sized closing unit
  - D. Auxiliary equipment including rotating head and annular type blowout preventer.

2. Protective Equipment for Essential Personnel

Thirty minute self contained work unit located at briefing area as indicated on wellsite diagram.

3. Hydrogen Sulfide Protection and Monitoring Equipment

Two portable hydrogen sulfide monitors positioned on location for optimum coverage and detection. The units shall have audible sirens to notify personnel when hydrogen sulfide levels exceed 20 ppm.

4. Visual Warning Systems

- A. Wind direction indicators as indicated on the wellsite diagram.
- B. Caution signs shall be posted on roads providing access to location. Signs shall be painted a high visibility color with lettering of sufficient size to be readable at reasonable distances from potentially contaminated areas.

3. **Mud Program**

The mud program has been designed to minimize the amount of hydrogen sulfide entrained in the mud system. Proper mud weight, safe drilling practices, and the use of hydrogen sulfide scavengers will minimize hazards while drilling the well.

4. **Metallurgy**

All tubular systems, wellheads, blowout preventers, drilling spools, kill lines, choke manifolds, and valves shall be suitable for service in a hydrogen sulfide environment when chemically treated.

5. **Communications**

State & County Officials phone numbers are posted on rig floor and supervisors trailer. Communications in company vehicles and toolpushers are either two way radios or cellular phones.

6. **Well Testing**

Drill stem testing is not an anticipated requirement for evaluation of this well. A drill stem test is required, it will be conducted with a minimum number of personnel in the immediate vicinity. The test will be conducted during daylight hours only.

7. **General Requirements**

MOC has researched this area and no high concentrations of H<sub>2</sub>S was found. MOC will have on location and working all H<sub>2</sub>S safety equipment before Yates formation.

**United States Department of the Interior  
Bureau of Land Management  
Roswell Field Office  
2909 West Second Street  
Roswell, New Mexico 88201-1287**

**Statement Accepting Responsibility for Operations**

Operator Name: Mewbourne Oil Company  
Street or Box: P.O. Box 5270  
City, State: Hobbs, New Mexico  
Zip Code: 88241

The undersigned accepts all applicable terms, conditions, stipulations, and restrictions concerning operations conducted of the leased land or portion thereof, as described below.

Lease Number: **Lease Number NM106717**

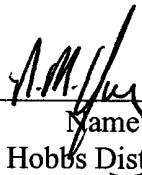
Legal Description of Land: Section 17-T18S-R32E, Eddy County, New Mexico.  
Location 660' FNL & 1375' FEL of Section 17

Formation (if applicable):

Bond Coverage: \$150,000

BLM Bond File: NM1693, Nationwide

Authorized Signature: \_\_\_\_\_

  
Name: NM Young  
Title: Hobbs District Manager  
Date: June 17, 2004

**Notes Regarding Blowout Preventer**

**Mewbourne Oil Company**

SF "17" Federal Com #4

660' FNL & 1375' FEL

Section 17-T18S-R32E

Lea County, New Mexico

1. Drilling nipple (bell nipple) to be constructed so that it can be removed without the use of a welder through the opening of the rotary table, with minimum internal diameter equal to blowout preventer bore.
2. Blowout preventer and all fittings must be in good condition with a minimum 5000 psi working pressure.
3. Safety valve must be available on the rig floor at all times with proper connections to install in the drill string. Valve must be full bore with minimum 5000 psi working pressure.
4. Equipment through which bit must pass shall be at least as large as internal diameter of the casing.
5. A kelly cock shall be installed on the kelly at all times.
6. Blowout preventer closing equipment to include and accumulator of at least 40 gallon capacity, two independent sources of pressure on closing unit, and meet all other API specifications.

Mewbourne Oil Company  
BOP Schematic for  
12 1/4" Hole

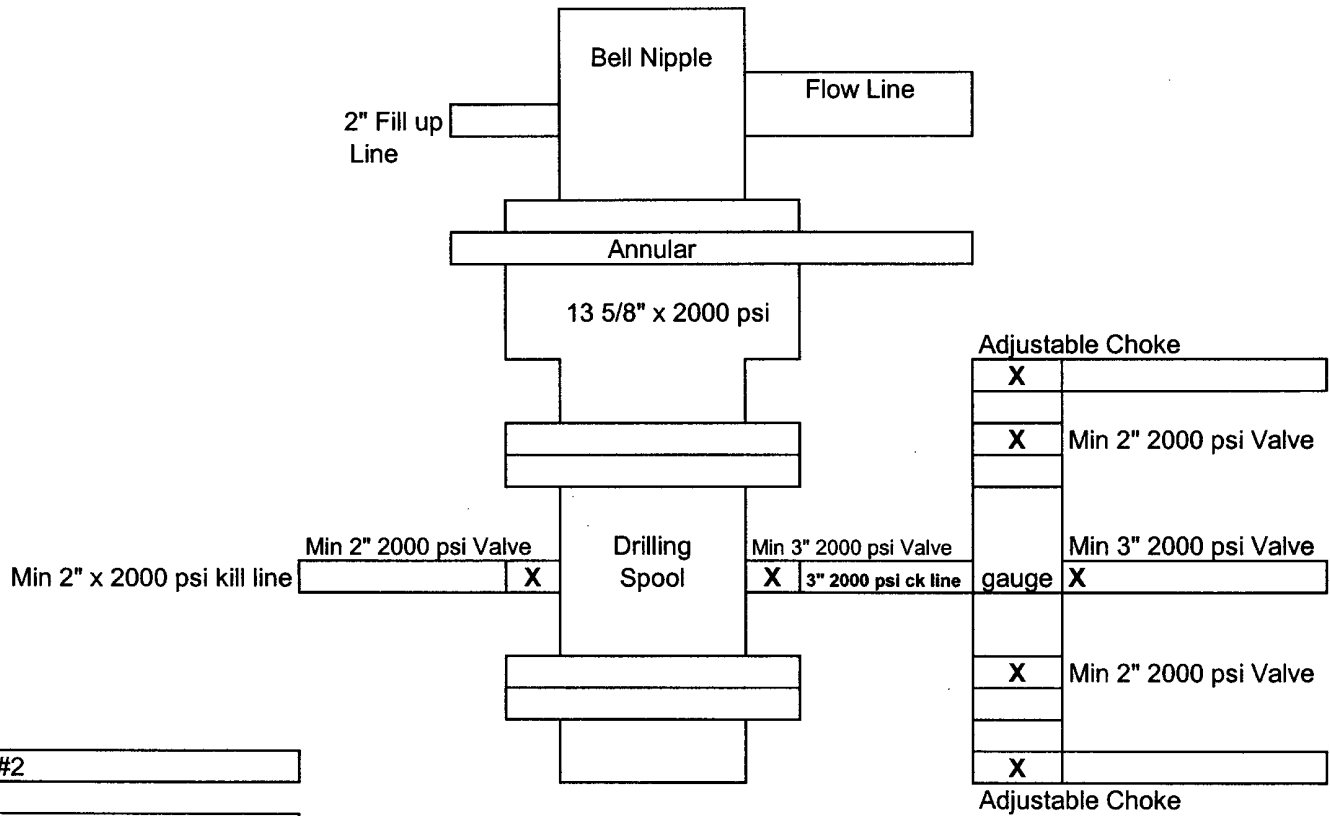


Exhibit #2

SF 17 Federal Com #4  
660' FNL & 1375' FEL  
Sec 17; T18S; R32E  
Lea County, New Mexico

Mewbourne Oil Company  
 BOP Scematic for  
 8 3/4" or 7 7/8" Hole

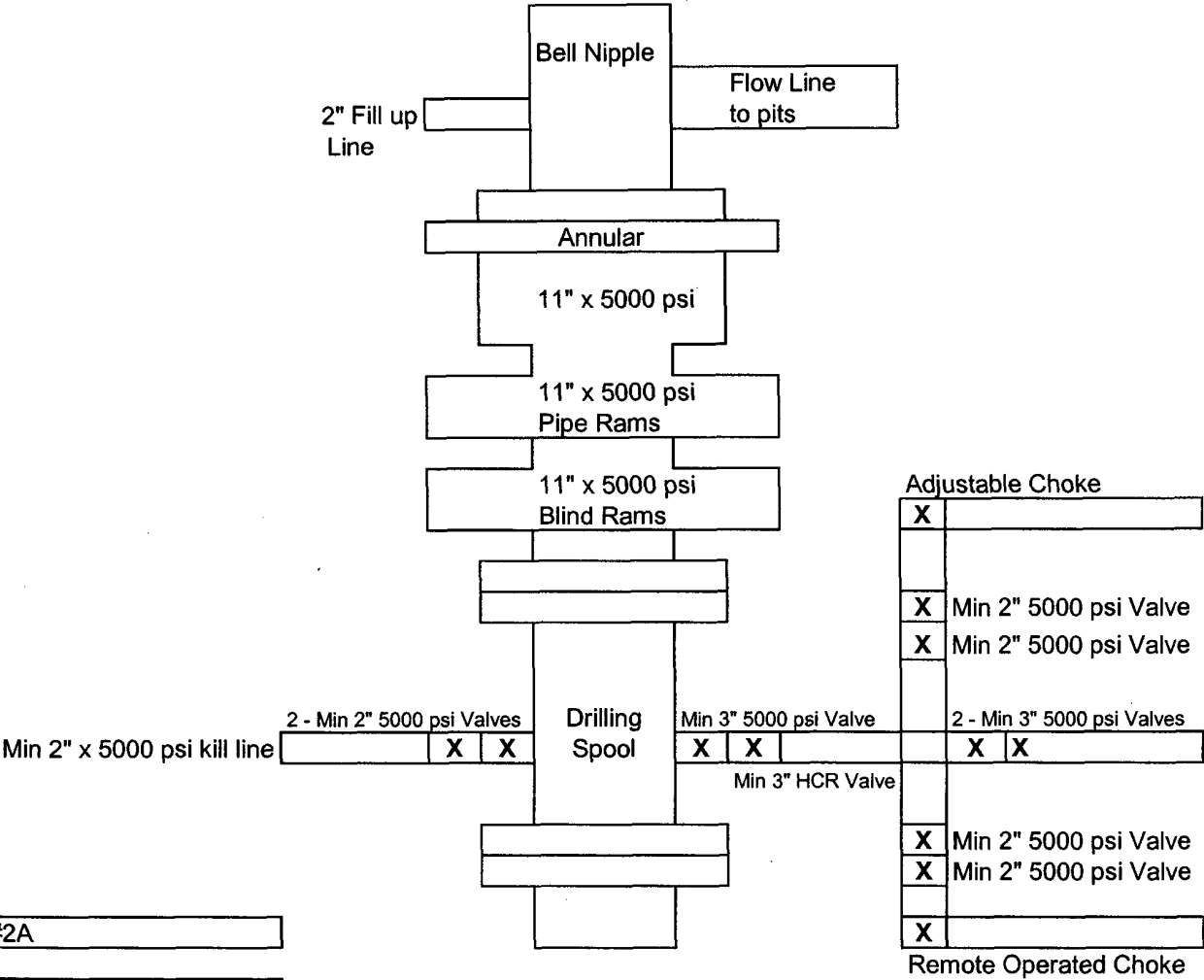
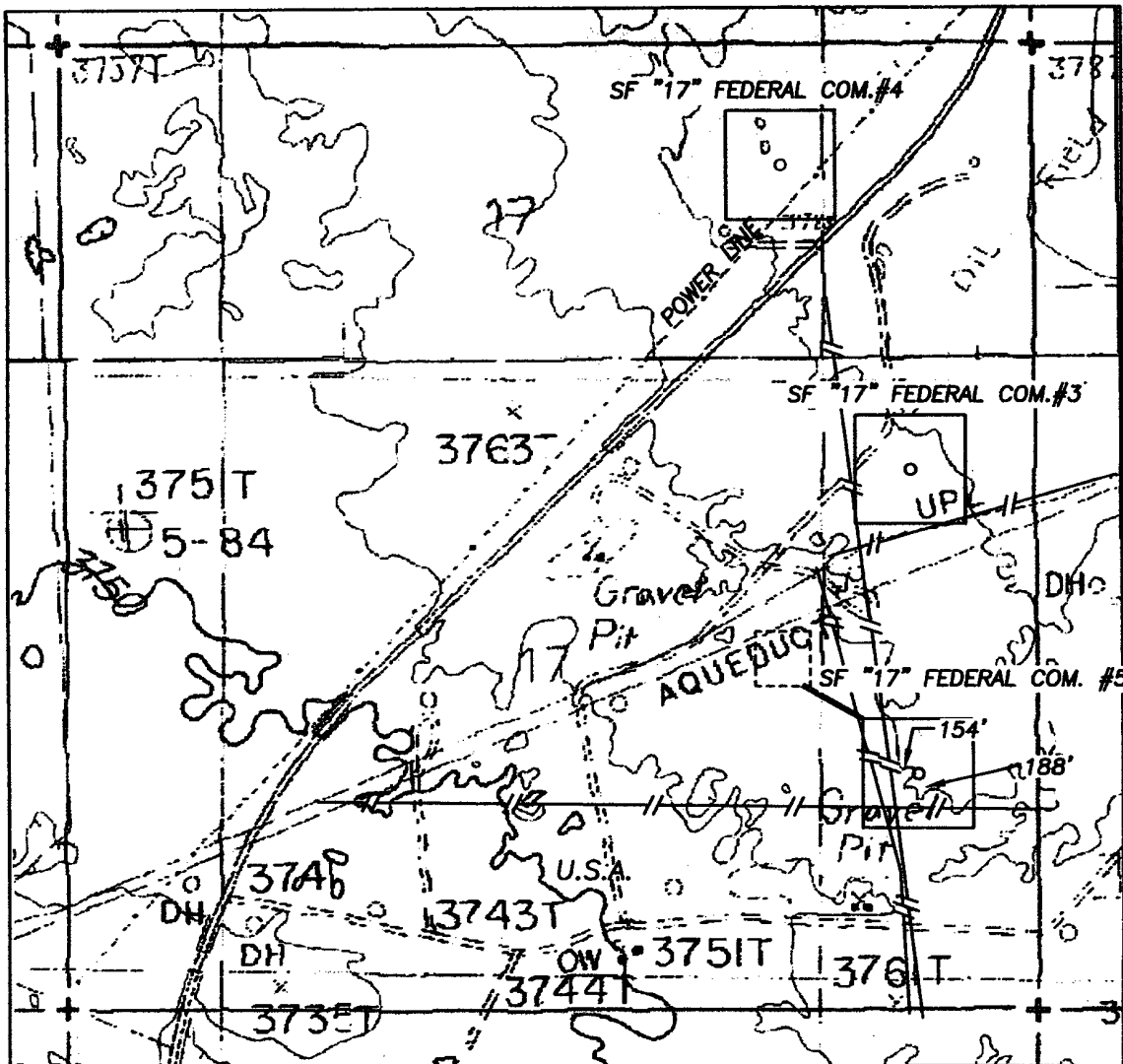


Exhibit #2A

SF 17 Federal Com #4  
 660' FNL & 1375' FEL  
 Sec 17; T18S; R32E  
 Lea County, New Mexico

SECTION 17, TOWNSHIP 18 SOUTH, RANGE 32 EAST, NMPM, LEA COUNTY, NEW MEXICO.



# Exhibit 3A

1000' 0 1000' 2000'  
Scale 1" = 1000'

THE PREPARATION OF THIS PLAT AND THE PERFORMANCE OF THE SURVEY UPON WHICH IT IS BASED WERE DONE UNDER MY DIRECTION AND THE PLAT ACCURATELY DEPICTS THE RESULTS OF SAID SURVEY AND MEET THE REQUIREMENTS OF THE STANDARDS FOR SURVEYS IN NEW MEXICO AS ADOPTED BY THE NEW MEXICO STATE BOARD OF REGISTRATION FOR PROFESSIONAL ENGINEERS AND LAND SURVEYORS.

HERSCHEL L. JONES R.L.S. No. 3640

GENERAL SURVEYING COMPANY P.O. BOX 1928  
LOVINGTON, NEW MEXICO 88260

## MEWBOURNE OIL COMPANY

LEASE ROAD TO ACCESS THE MEWBOURNE SF "17" FEDERAL COM. #4 WELL, LOCATED IN SECTION 17, TOWNSHIP 18 SOUTH, RANGE 32 EAST, NMPM, LEA COUNTY, NEW MEXICO.

Survey Date: 6/15/2004

Drawn By: Ed Blevins

Date: 6/15/04

Sheet 1 of 1 Sheets

W.O. Number

Scale 1" = 1000' SF17-3,4&5



**Exhibit #4**  
**Status of Wells in Immediate Vicinity**  
**Mewbourne Oil Company**  
SF "17" Federal Com #4  
660' FNL & 1375' FEL  
Section 17-T18S-R32E  
Lea County, New Mexico

**Section 17-T18S-R32E**

Operator: Mewbourne Oil Company  
Well Name: SF 17 Federal Com #1  
Unit letter: G  
Status: Producing  
Field: Lusk Strawn

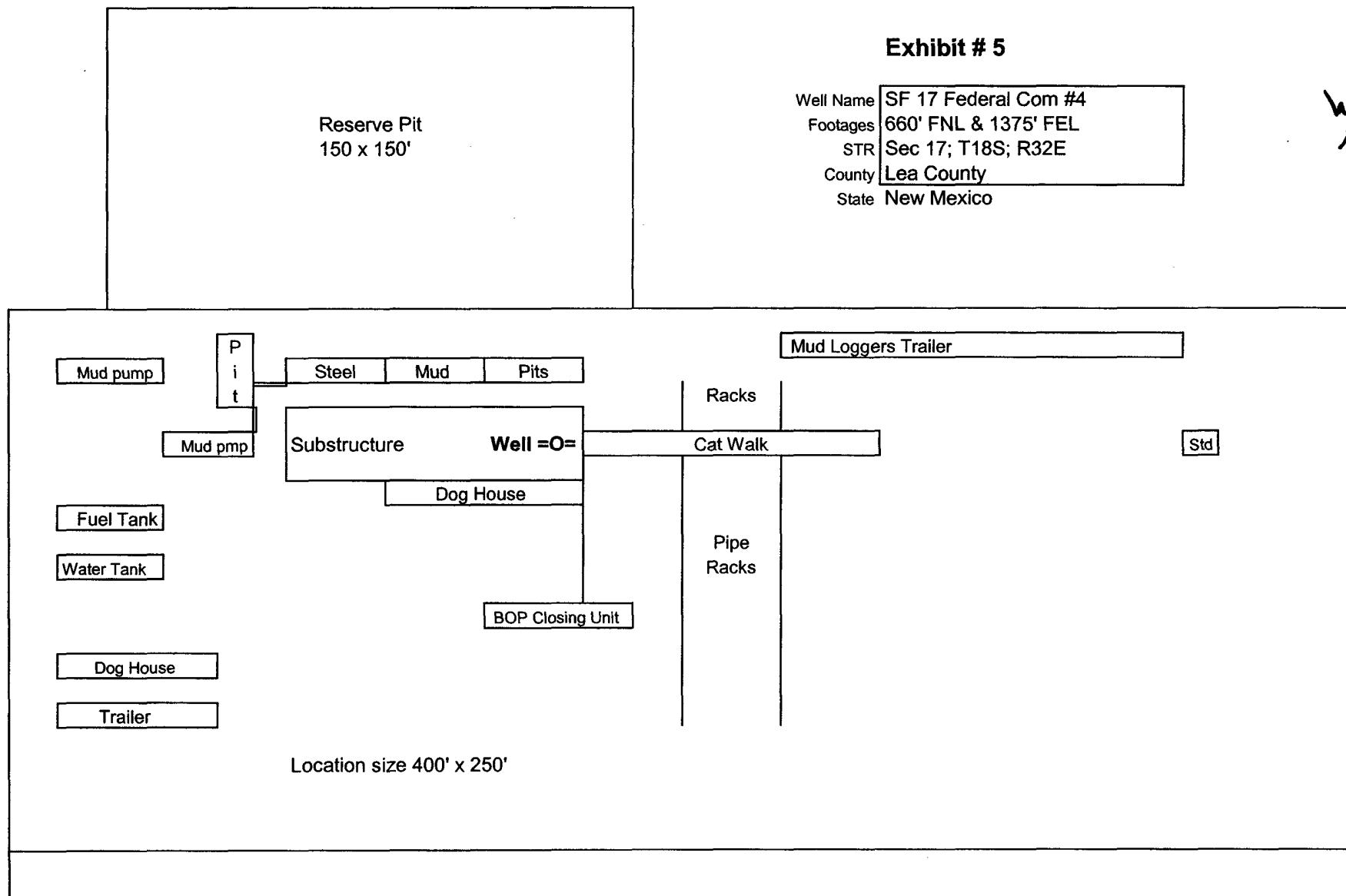
**Section 17-T18S-R32E**

Operator: Mewbourne Oil Company  
Well Name: SF 17 Federal Com #2  
Unit letter: J  
Status: Producing  
Field: Lusk Strawn

# Mewbourne Oil Company

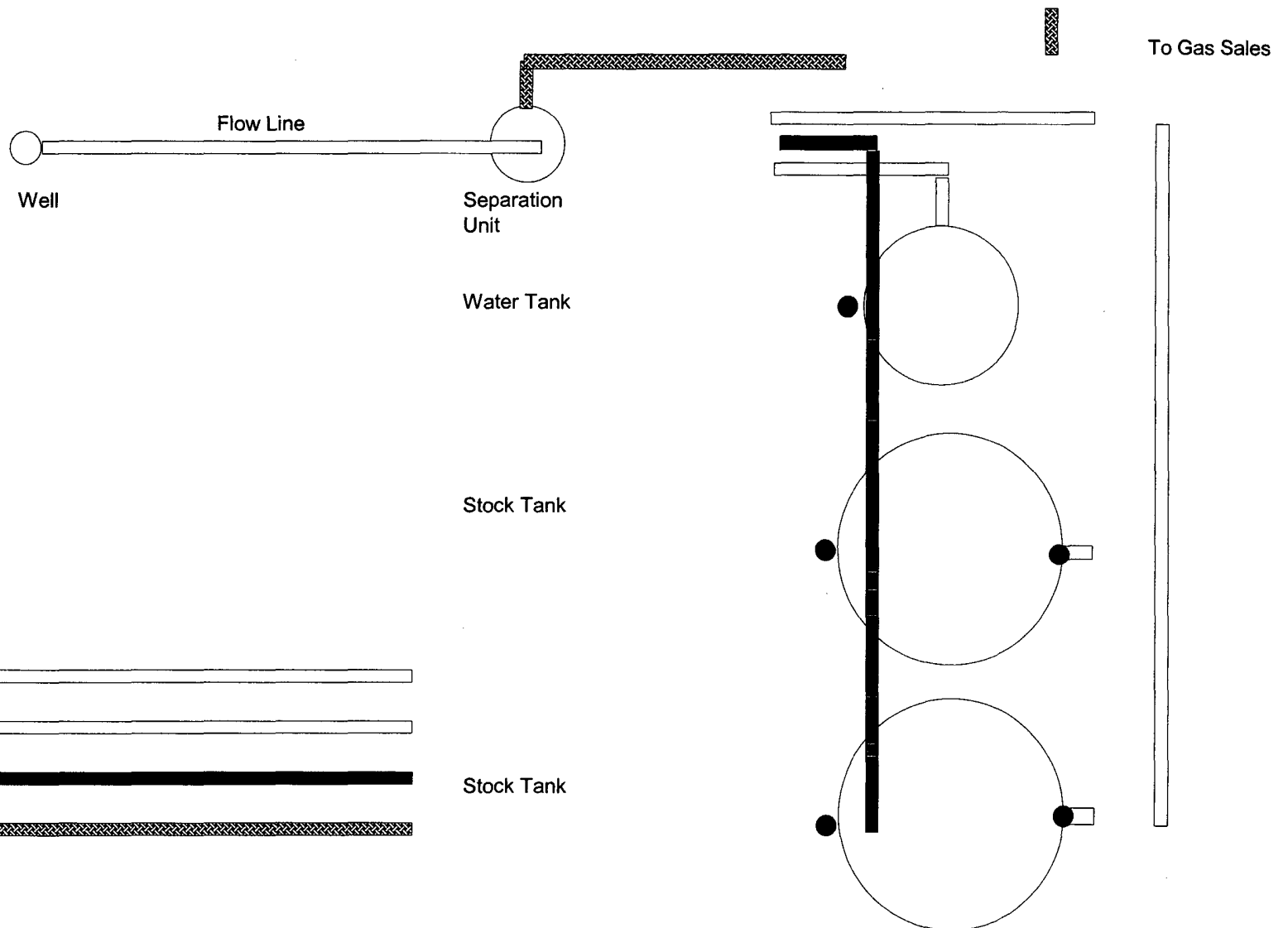
## Exhibit # 5

Well Name SF 17 Federal Com #4  
Footages 660' FNL & 1375' FEL  
STR Sec 17; T18S; R32E  
County Lea County  
State New Mexico



Rig Location Schematic

# Proposed Production Facilities Schematic



**Mewbourne Oil Company**

**Exhibit # 6**

**Proposed Production Facilities Schematic**

SF 17 Federal Com #4  
660' FNL & 1375' FEL  
Sec 17; T18S; R32E  
Lea County, New Mexico

District I  
1625 N. French Dr., Hobbs, NM 88240  
District II  
1301 W. Grand Avenue, Artesia, NM 88210  
District III  
1000 Rio Brazos Road, Aztec, NM 87410  
District IV  
1220 S. St. Francis Dr., Santa Fe, NM 87505

State of New Mexico  
Energy Minerals and Natural Resources

Oil Conservation Division  
1220 South St. Francis Dr.  
Santa Fe, NM 87505

Form C-144  
March 12, 2004

For drilling and production facilities, submit to appropriate NMOCD District Office.  
For downstream facilities, submit to Santa Fe office

**Pit or Below-Grade Tank Registration or Closure**

Is pit or below-grade tank covered by a "general plan"? Yes ☒ No ☐

Type of action: Registration of a pit or below-grade tank ☒ Closure of a pit or below-grade tank ☐

Operator: Mewbourne Oil Company Telephone: 505-393-5905 e-mail address: kgreen@mewbourne.com

Address: PO Box 5270 Hobbs, NM 88240

Facility or well name: SF 17 Federal Com #4 API # 30-025-31443 U/L or Qtr/Qtr B Sec 17 T18S R32E

County: Lea Latitude 32-45-10.8N Longitude 103-47-03.8W NAD: 1927 ☐ 1983 ☒

Surface Owner Federal ☒ State ☐ Private ☐ Indian ☐

**Pit**

Type: Drilling ☒ Production ☐ Disposal ☐

Workover ☐ Emergency ☐

Lined ☒ Unlined ☐

Liner type: Synthetic ☒ Thickness 12 mil Clay ☐ Volume  
24,000 bbl

**Below-grade tank**

Volume:        bbl Type of fluid:       

Construction material:       

Double-walled, with leak detection? Yes ☐ If not, explain why not.  
      

Depth to ground water (vertical distance from bottom of pit to seasonal high water elevation of ground water.)

Less than 50 feet	(20 points)
50 feet or more, but less than 100 feet	(10 points)
100 feet or more	( 0 points) X

Wellhead protection area: (Less than 200 feet from a private domestic water source, or less than 1000 feet from all other water sources.)

Yes	(20 points)
No X	( 0 points) X

Distance to surface water: (horizontal distance to all wetlands, playas, irrigation canals, ditches, and perennial and ephemeral watercourses.)

Less than 200 feet	(20 points)
200 feet or more, but less than 1000 feet	(10 points)
1000 feet or more	( 0 points) X

**Ranking Score (Total Points)**

0 points

**If this is a pit closure:** (1) attach a diagram of the facility showing the pit's relationship to other equipment and tanks. (2) Indicate disposal location:

onsite ☐ offsite ☐ If offsite, name of facility       . (3) Attach a general description of remedial action taken including remediation start date and end date. (4) Groundwater encountered: No ☐ Yes ☐ If yes, show depth below ground surface        ft. and attach sample results. (5) Attach soil sample results and a diagram of sample locations and excavations.

I hereby certify that the information above is true and complete to the best of my knowledge and belief. I further certify that the above-described pit or below-grade tank has been/will be constructed or closed according to NMOCD guidelines ☒ a general permit ☐ or an (attached) alternative OCD-approved plan ☐

Date: 06/17/04

Printed Name/Title Kristi Green / Hobbs Regulatory Asst

Signature Kristi Green

Your certification and NMOCD approval of this application/closure does not relieve the operator of liability should the contents of the pit or tank contaminate ground water or otherwise endanger public health or the environment. Nor does it relieve the operator of its responsibility for compliance with any other federal, state, or local laws and/or regulations.

Approval:

Date: 9/12/04 PETROLEUM ENGINEER

Printed Name/Title

Signature Paul J. King