

DISTRICT I  
P.O. Box 1980, Hobbs, NM 88241-1980  
DISTRICT II  
P.O. Box Drawer DD, Artesia, NM 88211-0719  
DISTRICT III  
1000 Rio Brazos Rd., Aztec, NM 87410  
DISTRICT IV  
P.O. Box 2088, Santa Fe, NM 87504-2088

State of New Mexico  
Energy, Minerals and Natural Resources Department

OIL CONSERVATION DIVISION

P.O. Box 2088  
Santa Fe, New Mexico 87504-2088

Form C-101  
Revised February 10, 1999  
Instructions on back  
Submit to Appropriate District Office  
State Lease - 6 Copie  
Fee Lease - 5 Copie

☒ AMENDED REPORT

APPLICATION FOR PERMIT TO DRILL, RE-ENTER, DEEPEN, PLUGBACK, OR ADD A ZONE

<sup>1</sup> Operator Name and Address CHEVRON USA INC 15 SMITH ROAD, MIDLAND, TX 79705		<sup>2</sup> OGRID Number 4323
<sup>4</sup> Property Code 22114	<sup>5</sup> Property Name H. T. ORCUTT NCT "E"	<sup>3</sup> API Number 30-025-36753
		<sup>6</sup> Well No. 4

<sup>7</sup> Surface Location									
Ul or lot no.	Section	Township	Range	Lot.Idn	Feet From The	North/South Line	Feet From The	East/West Line	County
D	2	20-S	37-E		330'	NORTH	330'	WEST	LEA

<sup>8</sup> Proposed Bottom Hole Location If Different From Surface

Ul or lot no.	Section	Township	Range	Lot.Idn	Feet From The	North/South Line	Feet From The	East/West Line	County
<sup>9</sup> Proposed Pool 1 WEIR BLINEBRY					<sup>10</sup> Proposed Pool 2 SKAGGS; GLORIETA, N.W.				

<sup>11</sup> Work Type Code N	<sup>12</sup> WellType Code O	<sup>13</sup> Rotary or C.T. ROTARY	<sup>14</sup> Lease Type Code S	<sup>15</sup> Ground Level Elevation 3602'
<sup>16</sup> Multiple No	<sup>17</sup> Proposed Depth 6200'	<sup>18</sup> Formation BLINEBRY	<sup>19</sup> Contractor	<sup>20</sup> Spud Date 7/15/2004

<sup>21</sup> Proposed Casing and Cement Program

SIZE OF HOLE	SIZE OF CASING	WEIGHT PER FOOT	SETTING DEPTH	SACKS OF CEMENT	EST. TOP
11"	8 5/8"	24#	1450'	650 SX	CIRCULATED
7 7/8"	5 1/2"	15.5#	6000'	1420 SX	CIRCULATED

<sup>22</sup> Describe the proposed program. If this application is to DEEPEN or PLUG BACK give the data on the present productive zone and proposed new productive zone. Describe the blowout prevention program, if any. Use additional sheets if necessary.

SURFACE CASING: 650 SX CLASS 'C' WITH 2% CACL<sub>2</sub>, YIELD 1.34, CEMENT WEIGHT 1.34  
PRODUCTION CASING: LEAD IN WITH 550 SX CLASS 'H' 35/65 POZ WITH 6% GEL, 5% SALT, & 1/4# CELL, YIELD 2.14, CEMENT WEIGHT 12.4  
TAIL IN WITH 870 SX CLASS 'H' 50/50 POZ WITH 2% GEL, 5% SALT, & 1/4# CELL, YIELD 1.35, CEMENT WEIGHT 14.2  
MUD PROGRAM: 0-1450' FRESH WATER, 8.4 WEIGHT, CIRC PITS OR RESERVE, VISC 28  
440-6000' BRINE/STARCH, 10 WEIGHT, CIRC RESERVES, LIME PH 9, VISC. 29  
GEL IF NEEDED  
BOP PROGRAM: 11" ANNULAR 2M PRESSURE RATING  
7 7/8" EXHIBIT C 3M PRESSURE RATING

\*\*\*\*\*THIS IS AN AMENDED REPORT TO CHANGE THE LEGAL LOCATION\*\*\*\*\* (CONVERSATION BETWEEN DENNY & KAUTZ)

<sup>23</sup> I hereby certify that the rules and regulations of the Oil Conservation Division have been complied with and that the information given above is true and complete to the best of my knowledge and belief.

Signature *Denise Leake*

Printed Name Denise Leake

Title Regulatory Specialist

Date 9/2/2004

Telephone 915-687-7375

OIL CONSERVATION DIVISION

Approved By: *Paul E. Kautz*

Title: PAUL E. KAUTZ

Approval Date:

Expiration Date:

Conditions of Approval  
Attached ☐ SEP 07 2004

Permit Expires 1 Year From Approval  
Date Unless Drilling Underway

## DISTRICT I

P.O. Box 1000, Hobbs, NM 88241-1000

## DISTRICT II

P.O. Drawer DD, Artesia, NM 88211-0719

## DISTRICT III

1000 Rio Brazos Rd., Aztec, NM 87410

## DISTRICT IV

P.O. Box 2088, Santa Fe, N.M. 87504-2088

## State of New Mexico

Energy, Minerals and Natural Resources Department

## OIL CONSERVATION DIVISION

P.O. Box 2088

Santa Fe, New Mexico 87504-2088

Form C-102

Revised February 10, 1994

Submit to Appropriate District Office

State Lease - 4 Copies

Fee Lease - 3 Copies

## WELL LOCATION AND ACREAGE DEDICATION PLAT

X AMENDED REPORT

API Number <b>30-025-36753</b>	Pool Code <b>63780</b>	Pool Name <b>Weir BLINERY</b>
Property Code <b>22114</b>	Property Name <b>H.T. ORCUTT NCT "E"</b>	Well Number <b>4</b>
OGRIID No. <b>4323</b>	Operator Name <b>CHEVRON, INC.</b>	Elevation <b>3602'</b>

## Surface Location

UL or lot No.	Section	Township	Range	Lot Idn	Feet from the	North/South line	Feet from the	East/West line	County
4	2	20-S	37-E		330'	NORTH	330'	WEST	LEA

## Bottom Hole Location If Different From Surface

UL or lot No.	Section	Township	Range	Lot Idn	Feet from the	North/South line	Feet from the	East/West line	County
Dedicated Acres <b>4.0</b>	Joint or Infill	Consolidation Code	Order No.						

NO ALLOWABLE WILL BE ASSIGNED TO THIS COMPLETION UNTIL ALL INTERESTS HAVE BEEN CONSOLIDATED  
OR A NON-STANDARD UNIT HAS BEEN APPROVED BY THE DIVISION

	<p>LOT 4</p> <p>LOT 3</p> <p>LOT 2</p> <p>LOT 1</p> <p>GEODETTIC COORDINATE NAD 27 NME</p> <p>Y=586836.3 N X=839993.2 E</p> <p>LAT.=32°36'30.47" N LONG.=103°13'45.26" W</p>	<p><b>OPERATOR CERTIFICATION</b></p> <p>I hereby certify the the information contained herein is true and complete to the best of my knowledge and belief.</p> <p><i>Denise Pinkerton</i> Signature</p> <p><b>Denise Pinkerton</b> Printed Name</p> <p><b>Regulatory Specialist</b> Title</p> <p><b>902-04</b> Date</p> <p><b>SURVEYOR CERTIFICATION</b></p> <p>I hereby certify that the well location shown on this plat was plotted from field notes of actual surveys made by me or under my supervision, and that the same is true and correct to the best of my belief.</p> <p><b>MAY 21, 2004</b></p> <p>Date Surveyed: <b>09/1/04</b> LA</p> <p>Signature: <i>[Signature]</i> Professional Surveyor</p> <p><b>NEW MEXICO</b></p> <p><b>04.11.0596</b></p> <p>Certificate No. <b>CARY EDEEN</b> 12841</p>
--	--	--

## DISTRICT I

P.O. Box 1980, Hobbs, NM 88241-1980

## DISTRICT II

P.O. Drawer DD, Artesia, NM 88211-0719

## DISTRICT III

1000 Rio Brazos Rd., Axtec, NM 87410

## DISTRICT IV

P.O. BOX 2088, SANTA FE, N.M. 87504-2088

## State of New Mexico

Energy, Minerals and Natural Resources Department

## OIL CONSERVATION DIVISION

P.O. Box 2088

Santa Fe, New Mexico 87504-2088

Form C-102

Revised February 10, 1984

Submit to Appropriate District Office

State Lease - 4 Copies

Fee Lease - 3 Copies

## WELL LOCATION AND ACREAGE DEDICATION PLAT

X AMENDED REPORT

API Number <b>30-025-36753</b>	Pool Code <b>97203</b>	Pool Name <b>SKAGGS, GLORIETA, N.W.</b>
Property Code <b>22114</b>	Property Name <b>H.T. ORCUTT NCT "E"</b>	Well Number <b>4</b>
OCRID No. <b>4323</b>	Operator Name <b>CHEVRON, INC.</b>	Elevation <b>3602'</b>

## Surface Location

UL or lot No.	Section	Township	Range	Lot Idn	Feet from the	North/South line	Feet from the	East/West line	County
4	2	20-S	37-E		330'	NORTH	330'	WEST	LEA

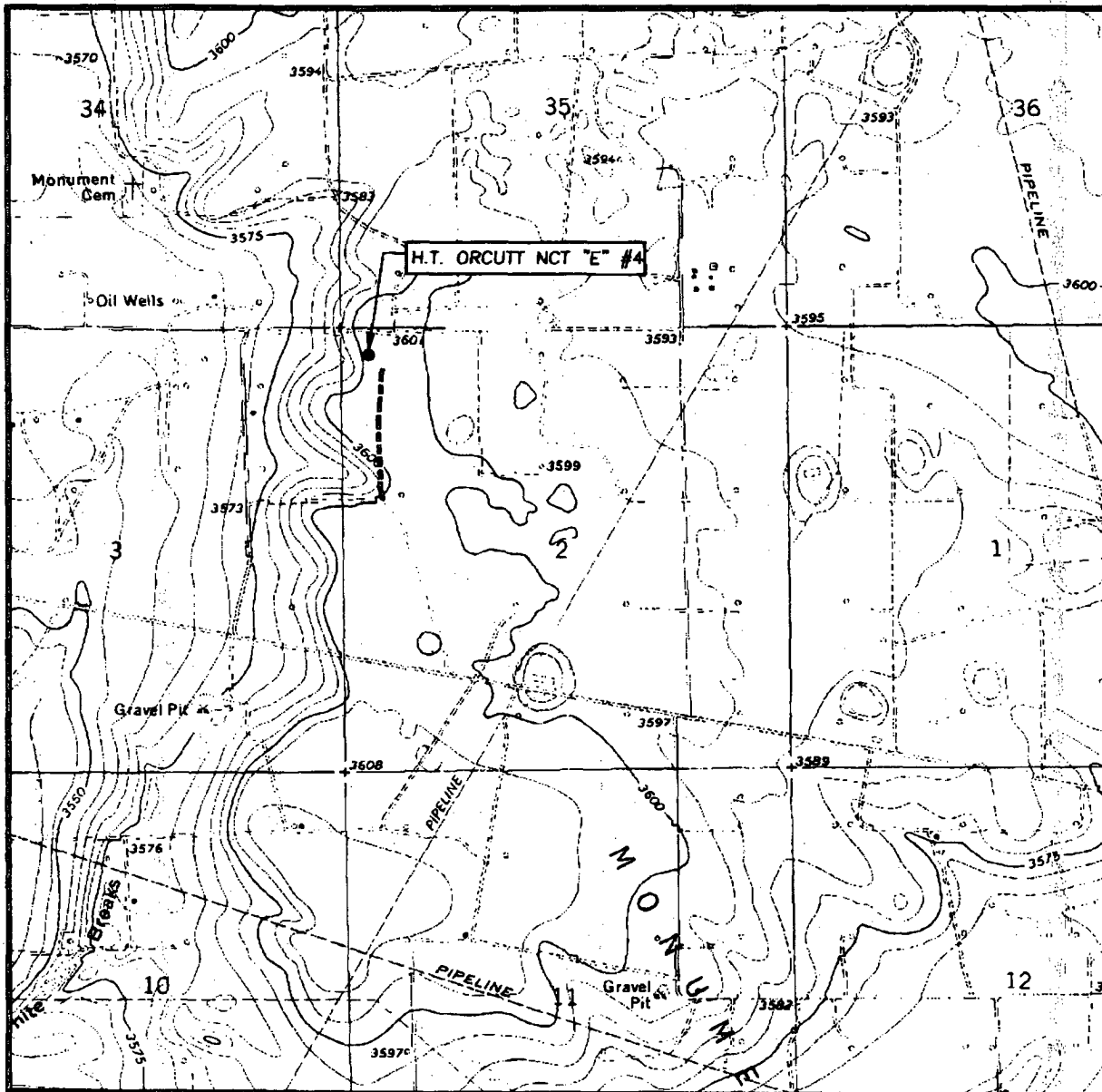
## Bottom Hole Location If Different From Surface

UL or lot No.	Section	Township	Range	Lot Idn	Feet from the	North/South line	Feet from the	East/West line	County
Dedicated Acres <b>40</b>	Joint or Infill	Consolidation Code	Order No.						

NO ALLOWABLE WILL BE ASSIGNED TO THIS COMPLETION UNTIL ALL INTERESTS HAVE BEEN CONSOLIDATED  
OR A NON-STANDARD UNIT HAS BEEN APPROVED BY THE DIVISION

	<p>LOT 4</p> <p>LOT 3</p> <p>LOT 2</p> <p>LOT 1</p> <p>GEODETIC COORDINATE NAD 27 NME</p> <p>Y=586836.3 N X=839993.2 E</p> <p>LAT.=32°36'30.47" N LONG.=103°13'45.26" W</p>	<p><b>OPERATOR CERTIFICATION</b></p> <p>I hereby certify the the information contained herein is true and complete to the best of my knowledge and belief.</p> <p><i>Denise Pinkerton</i></p> <p>Signature <b>Denise Pinkerton</b></p> <p>Printed Name <b>Regulatory Specialist</b></p> <p>Title <b>902-04</b></p> <p>Date</p> <p><b>SURVEYOR CERTIFICATION</b></p> <p>I hereby certify that the well location shown on this plat was plotted from field notes of actual surveys made by me or under my supervision and that the same is true and correct to the best of my belief.</p> <p>MAY 21, 2004</p> <p>Date Surveyed 09/1/04 LA</p> <p>Signature &amp; Seal of Professional Surveyor <i>GARY EDSON</i></p> <p>Certification No. <b>GARY EDSON</b> 12641</p>
--	---	---

# LOCATION VERIFICATION MAP



SCALE: 1" = 2000'

CONTOUR INTERVAL:  
HOBBS SW, N.M. - 10'

SEC. 2 TWP. 20-S RGE. 37-E

SURVEY N.M.P.M.

COUNTY LEA

DESCRIPTION 330' FNL & 330' FWL

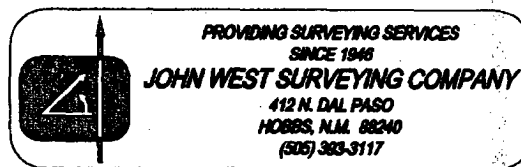
ELEVATION 3602'

OPERATOR CHEVRON, INC.

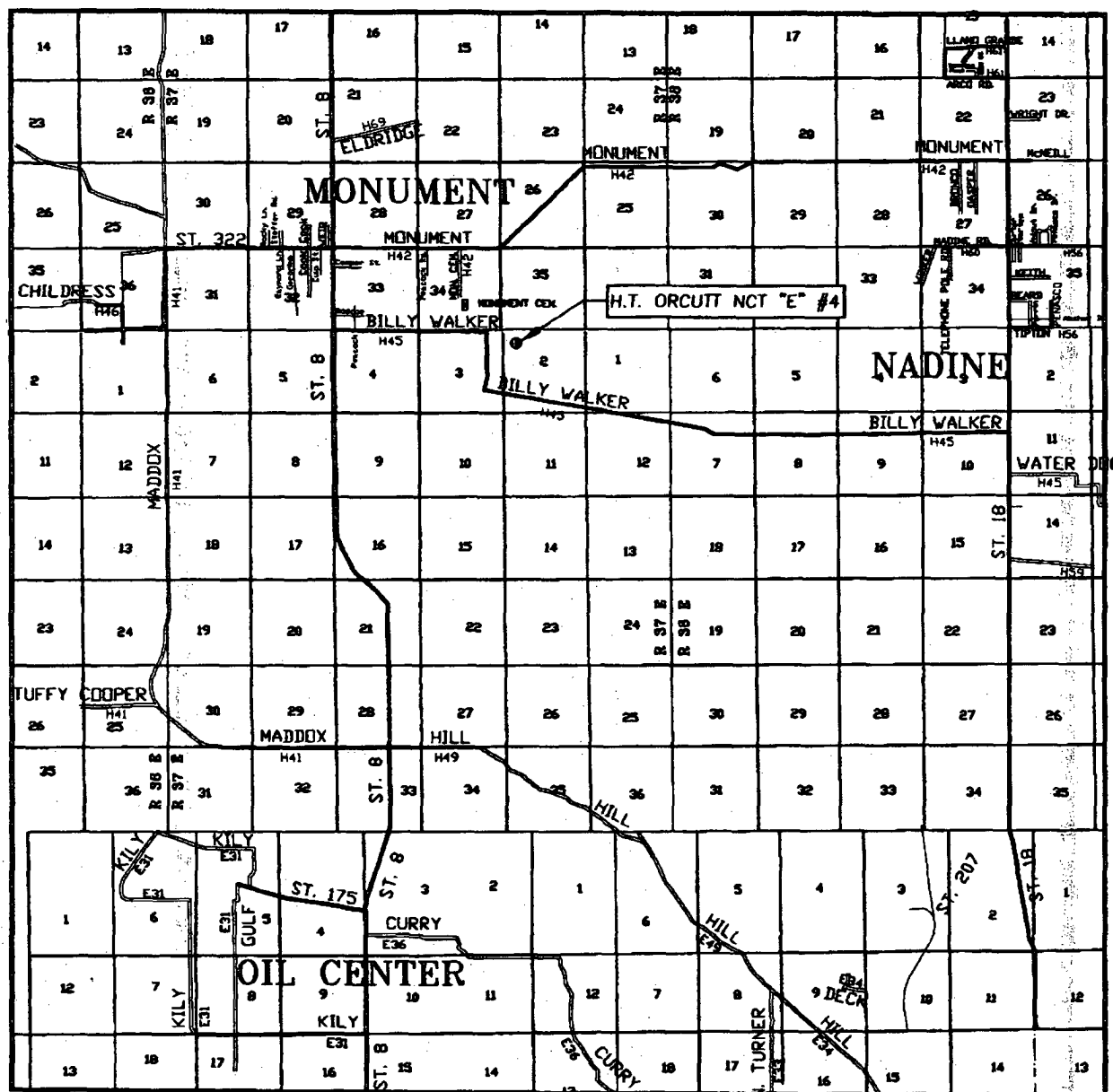
LEASE H.T. ORCUTT NCT "E"

U.S.G.S. TOPOGRAPHIC MAP

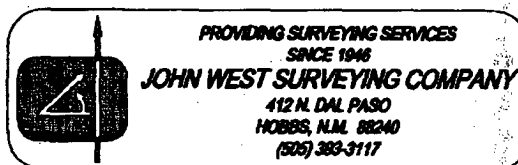
HOBBS SW, N.M.



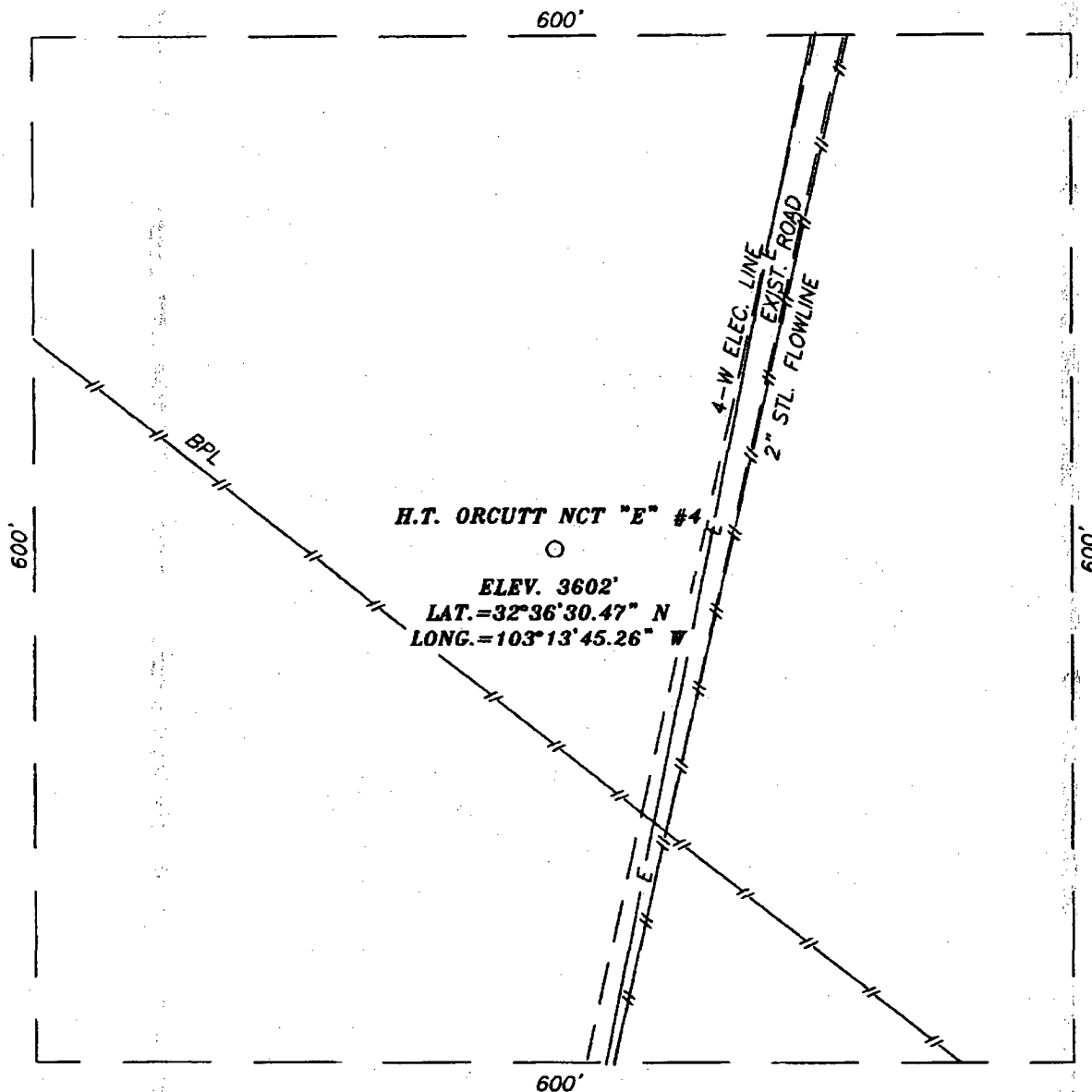
## VICINITY MAP



SCALE: 1" = 2 MILES

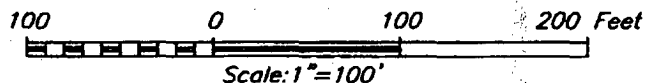
SEC. 2 TWP. 20-S RGE. 37-ESURVEY N.M.P.M.COUNTY LEADESCRIPTION 330' FNL & 330' FWLELEVATION 3602'OPERATOR CHEVRON, INC.LEASE H.T. ORCUTT NCT "E"

**SECTION 2, TOWNSHIP 20 SOUTH, RANGE 37 EAST, N.M.P.M.,**  
**LEA COUNTY, NEW MEXICO**



**DIRECTIONS TO LOCATION**

FROM THE INTERSESECTION OF STATE HWY. #18  
 AND LEA CO. RD. #45 (BILLY WALKER) GO WEST  
 ON CO. RD. #45 FOR 6.0 MILES TO A GOOD  
 CALICHE ROAD ON RIGHT. TURN RIGHT AND GO  
 NORTH-NORTHWEST AND GO 0.75 MILES. THIS  
 LOCATION IS 100' WEST.



**CHEVRON, INC.**

H.T. ORCUTT NCT "E" #4 WELL  
 LOCATED 330 FEET FROM THE NORTH LINE  
 AND 330 FEET FROM THE WEST LINE OF SECTION 2,  
 TOWNSHIP 20 SOUTH, RANGE 37 EAST, N.M.P.M.,  
 LEA COUNTY, NEW MEXICO.

Survey Date: 5/21/04

Sheet 1 of 1 Sheets

W.O. Number: 04.11.0594

Dr By: L.A.

Rev 1:09/1/04

Date: 5/28/04

Disk: CD#3

04110594

Scale: 1"=100'



PROVIDING SURVEYING SERVICES  
 SINCE 1946  
**JOHN WEST SURVEYING COMPANY**  
 412 N. DAL PASO  
 HOBBS, N.M. 88240  
 (505) 383-3117