

OPER. OGRIO NO. 25575
PROPERTY NO. 18793
POOL CODE 51683
EFF. DATE 9/23/04
DI API NO. 30-025-36887

11

OMB No. 1004-0136
Expires November 30, 2000
Lease Serial No.

APPLICATION FOR PERMIT TO DRILL OR REENTER

704

NM-81274

1a. Type of Work: ☒ DRILL ☐ REENTER

6. If Indian, Allottee or Tribe Name
Not Applicable

b. Type of Well: ☒ Oil Well ☐ Gas Well ☐ Other ☒ Single Zone ☐ Multiple Zone

7. If Unit or CA Agreement, Name and No.

Not Applicable

8. Lease Name and Well No.

Thyme APY Federal #10

2. Name of Operator

Yates Petroleum Corporation

9. API Well No.

30-025-36887

3A. Address **105 South Fourth Street
Artesia, New Mexico 88210**

3b. Phone No. (include area code)
(505) 748-1471

10. Field and Pool, or Exploratory

Red Tank Bone Springs

4. Location of Well (Report location clearly and in accordance with any State requirements. *)

At surface

SWNW 2310 FNL and 990 FWL

At proposed prod. Zone

same as above

Unit E

11. Sec., T., R., M., or Blk. and Survey or Area

Section 1, T23S-R32E, Mer NMP

14. Distance in miles and direction from nearest town or post office*

Approximately forty-one (41) miles northwest of Jal, New Mexico

12. County or Parish

Lea County

13. State

NM

15. Distance from proposed*
location to nearest
property or lease line, ft.
(Also to nearest drig. unit line, if any)

16. No. of Acres in lease

479.25

17. Spacing Unit dedicated to this well

40

18. Distance from proposed location*
to nearest well, drilling, completed,
applied for, on this lease, ft.

19. Proposed Depth

9200'

20. BLM/BIA Bond No. on file

NM-2811

21. Elevations (Show whether DF, KDB, RT, GL, etc.)

3740' GL

22. Approximate date work will start*

ASAP

23. Estimated duration

35 Days

24. Attachments

CARLSBAD CONTROLLED WATER BASIN

The following, completed in accordance with the requirements of Onshore Oil and Gas Order No. 1, shall be attached to this form:

1. Well plat certified by a registered surveyor.
2. A Drilling Plan.
3. A Surface Use Plan (if the location is on National Forest System Lands, the SUPO shall be filed with the appropriate Forest Service Office.

4. Bond to cover the operations unless covered by an existing bond on file (see Item 20 above).
5. Operator certification.
6. Such other site specific information and/or plans as may be required by the authorized office.

25. Signature

Clifton R. May

Name (Printed/Typed)

Clifton R. May

Date

7/19/04

Email: debbiec@ypcnm.com

Title: **Regulatory Agent / Land Department**

Approved by (Signature)

/s/ Joe G. Lara

Name (Printed/Typed)

/s/ Joe G. Lara

Date

15 SEP 2004

Title

FIELD MANAGER

Office

CARLSBAD FIELD OFFICE

Application approval does not warrant or certify that the applicant holds legal or equitable title to those rights in the subject lease which would entitle the applicant to conduct operations thereon.

Conditions of approval, if any, are attached.

APPROVAL FOR 1 YEAR

Title 18 U.S.C. Section 1001 and Title 43 U.S.C. Section 1212, make it a crime for any person knowingly and willfully to make to any department or agency of the United States any false, fictitious or fraudulent statements or representations as to any matter within its jurisdiction.

*(Instructions on reverse)

DECLARED WATER BASIN
CEMENT BEHIND THE 11 3/4"
CASING MUST BE **CIRCULATED**

APPROVAL SUBJECT TO
GENERAL REQUIREMENTS
AND SPECIAL STIPULATIONS
ATTACHED

PREVIOUSLY APPROVED

K2

District I

1625 N. French Dr., Hobbs, NM 88240

District II

811 South First, Artesia, NM 88210

District III

1000 Rio Brazos Rd., Aztec, NM 87410

District IV

1220 S. St. Francis Dr., Santa Fe, NM 87505

State of New Mexico

Energy, Minerals & Natural Resources Department

Form C-102

Revised August 15, 2000

OIL CONSERVATION DIVISION

1220 South St. Francis Dr.

Santa Fe, NM 87505

Submit to Appropriate District Office

State Lease - 4 Copies

Fee Lease - 3 Copies

☐ AMENDED REPORT**WELL LOCATION AND ACREAGE DEDICATION PLAT**

¹ API Number 30-025-36887	² Pool Code 51683	³ Pool Name Red Tank Bone Spring
⁴ Property Code 18793	⁵ Property Name Thyme APY Federal	
⁷ OGRID No. 025575	⁸ Operator Name Yates Petroleum Corporation	⁶ Well Number 10
		⁹ Elevation 3740

¹⁰ Surface Location

UL or lot no. E	Section 1	Township 23S	Range 32E	Lot Idn	Feet from the 2310	North/South line North	Feet from the 990	East/West line West	County Lea
---------------------------	---------------------	------------------------	---------------------	---------	------------------------------	----------------------------------	-----------------------------	-------------------------------	----------------------

¹¹ Bottom Hole Location If Different From Surface

UL or lot no.	Section	Township	Range	Lot Idn	Feet from the	North/South line	Feet from the	East/West line	County
---------------	---------	----------	-------	---------	---------------	------------------	---------------	----------------	--------

¹² Dedicated Acres 40	¹³ Joint or Infill	¹⁴ Consolidation Code	¹⁵ Order No.
--	-------------------------------	----------------------------------	-------------------------

NO ALLOWABLE WILL BE ASSIGNED TO THIS COMPLETION UNTIL ALL INTERESTS HAVE BEEN CONSOLIDATED OR A NON-STANDARD UNIT HAS BEEN APPROVED BY THE DIVISION

¹⁶				¹⁷ OPERATOR CERTIFICATION I hereby certify that the information contained herein is true and complete to the best of my knowledge and belief. Signature Clifton R. May Printed Name Regulatory Agent Title 07/19/2004 Date
				¹⁸ SURVEYOR CERTIFICATION I hereby certify that the well location shown on this plat was plotted from field notes of actual surveys made by me or under my supervision, and that the same is true and correct to the best of my belief. Date of Survey Signature and Seal of Professional Surveyor: Refer to Original Plat Certificate Number

YATES PETROLEUM CORPORATION

Thyme APY Federal #10

2310' FNL and 990' FWL

Section 1-T23S-R32E

Lea County, New Mexico

1. The estimated tops of geologic markers are as follows:

Rustler	1260'	Cherry Canyon	5990'
Top of Salt	1295'	Bone Spring	8800'
Bottom of Salt	4680'	TD	9200'
Delaware	4968'		

2. The estimated depths at which anticipated water, oil or gas formations are expected to be encountered:

Water: 250' – 750'
Oil or Gas: 8800'

3. Pressure Control Equipment: BOPE will be installed on the 13 3/4" casing and rated for 3000# BOP systems will be consistent with API RP 53. Pressure tests will be conducted before drilling out from under all casing strings, which are set and cemented in place. Blowout Preventor controls will be installed prior to drilling the surface plug and will remain in use until the well is completed or abandoned. Preventors will be inspected and operated at least daily to ensure good mechanical working order, and this inspection recorded on the daily drilling report. See Exhibit B.

Auxiliary Equipment:

- A. Auxiliary Equipment: Kelly cock, pit level indicators, flow sensor equipment and a sub with full opening valve to fit the drill pipe and collars will be available on the rig floor in the open position at all times for use when kelly is not in use.

4. THE PROPOSED CASING AND CEMENTING PROGRAM:

- A. Casing Program: (All New)

<u>Hole Size</u>	<u>Casing Size</u>	<u>Wt./Ft</u>	<u>Grade</u>	<u>Coupling</u>	<u>Interval</u>	<u>Length</u>
14 3/4"	11 3/4"	42#	J-55	ST&C	0-1270'	1270'
11"	8 5/8"	32#	J-55	ST&C	0-4200'	4200'
12 1/4"	8 5/8"	32#	HC-80	ST&C	4200-4810'	610'
7 7/8	5 1/2"	17#	N-80	LT&C	0-2000'	2000'
7 7/8	5 1/2"	17#	J-55	LT&C	2000-3000'	1000'
7 7/8	5 1/2"	15.5#	J-55	LT&C	3000-7000'	4000'
7 7/8	5 1/2"	17#	J-55	LT&C	7000-8500'	1500'
7 7/8	5 1/2"	17#	N-80	LT&C	8500-9200'	700'

1. Minimum Casing Design Factors: Collapse 1.125, Burst 1.0, and Tensile Strength 1.8
2. Yates Petroleum Corporation requests that a variance be granted in requiring the casing and BOPE to be tested to 2000 psi to testing the casing and BOPE to 1000 psi. The rig pumps will be used to test the casing and BOPE. Rig pumps used in this area cannot safely test above 1000 psi. We would have to go to the greater expense of hiring an independent service company to do the testing. Also, the bottom hole pressure in this field is proven to be near 1000 psi. A shut in surface pressure would be less than 1000 psi. We feel that a 1000 psi test will demonstrate that the BOPE is functioning properly, and in the unlikely event of a gas influx that the BOPE would be sufficient to control the well.

B. CEMENTING PROGRAM:

Surface Casing: 550 sx Pacesetter Lite "C" w/ 1/4# Cellocel + 3% CaCl₂ (YLD 1.84 WT 12.4) + 250 sx Class "C" w/2% CaCl₂ (YLD 1.32 WT 14.8). Cement calculated to circulate to surface.

Intermediate Casing: 1500 sx Pacesetter Lite "C" w/ 1/4# Cellocel + 3% CaCl₂ (YLD 1.32 WT 14.8) + 250 sx Class "C" w/2% CaCl₂ (YLD 1.32 WT 14.8). Cement calculated to circulate to surface.

Production Casing: 1st Stage: 250 sx "H" w/8# sx CSE + 0.6% CF-14 + 5# sx Gilsonite (YLD 1.75 WT 13.6). Cement calculated to 8000' DV tool set @ approximately 8000'.

2nd Stage: 650 sx Pacesetter Lite "C" w/5# sx Gilsonite, 1/4# sx Cellocel + 0.5% CF-14 (YLD 1.84 WT 12.7) + 150 sx "H" w/0.5% CF-14 (YLD 1.78 WT 13.6). Cement calculated to tie back to intermediate casing 100'.

5. MUD PROGRAM AND AUXILIARY EQUIPMENT:

<u>Interval</u>	<u>Type</u>	<u>Weight</u>	<u>Viscosity</u>	<u>Fluid Loss</u>
0-1270'	FW GEL	8.6-9.6	32-36	N/C
1270'-4810'	Brine	10.0-10.2	28	N/C
4810'-9200'	Cut Brine/Starch	8.9-9.1	30	<15/cc

Sufficient mud material(s) to maintain mud properties, control lost circulation and contain a blow out will be available at the well site during drilling operations. Mud will be checked hourly by rig personnel.

6. EVALUATION PROGRAM:

Samples: Every 20' from surface to 4000', 10' from 4000' to TD.

Logging: CNL/LDT from TD to casing, w/ GR-CNL up to surface, DLL w/RXO from TD to casing; CMR over selected intervals.

Coring: None anticipated

DST's: As warranted.

7. ABNORMAL CONDITIONS, BOTTOM HOLE PRESSURE, AND POTENTIAL HAZARDS:

Anticipated BHP:

From: 0	TO: 1270'	Anticipated Max. BHP: 250 PSI
From: 1270'	TO: 4810'	Anticipated Max. BHP: 2062 PSI
From: 4810'	TO: TD	Anticipated Max. BHP: 3800 PSI

Abnormal Pressures Anticipated: None

Lost Circulation Zones Anticipated: None.

H₂S Zones Anticipated: None.

Maximum Bottom Hole Temperature: 140 F

8. ANTICIPATED STARTING DATE:

Plans are to drill this well as soon as possible after receiving approval. It should take approximately 15 days to drill the well with completion taking another 20 days.

MULTI-POINT SURFACE USE AND OPERATIONS PLAN
YATES PETROLEUM CORPORATION
Thyme APY Federal #10
2310' FNL and 990' FWL
Section 1-T23S-R32E
Lea County, New Mexico

This plan is submitted with Form 3160-3, Application for Permit to Drill, covering the above described well. The purpose of this plan is to describe the location of the proposed well, the proposed construction activities and operations plan, the magnitude of the surface disturbance involved and the procedures to be followed in rehabilitating the surface after completion of the operations, so that a complete appraisal can be made of the environmental effect associated with the operations.

1. EXISTING ROADS:

Exhibit A is a portion of the BLM map showing the well and roads in the vicinity of the proposed location. The proposed well site is located approximately 41 miles northwest of Jal, New Mexico and the access route to the location is indicated in red and green on Exhibit A.

DIRECTIONS:

Go east of Carlsbad on Hwy 285 to Hwy 31. Go east on Hwy 31 to Hwy 128 (Jal Hwy). Go approximately 17 miles to a major pipeline road. Turn left and go approx. 5.7 miles. Turn left (NW) and go approx. 1.4 miles and turn right. Go approx 3.1 miles. Go approx. 1 mile east to Thyme #1 location. Turn right to the Thyme #2 location. New access will start here and go south, west, north, and west.

2. PLANNED ACCESS ROAD:

- A. The proposed new access will be approximately 0.9 of a mile in length from the point of origin to the southeast corner of the drilling pad. The road will go south 1400', then west 2300', then north 800', and west 50'.
- B. The new road will be 14 feet in width (driving surface) and will be adequately drained to control runoff and soil erosion.
- C. The new road will be bladed with drainage on both sides. Two traffic turnouts will be built.
- D. The route of the road is visible.
- E. Existing roads will be maintained in the same or better condition.

3. LOCATION OF EXISTING WELL:

- A. There is drilling activity within a one-mile radius of the well site.
- B. Exhibit D shows existing wells within a one-mile radius of the proposed well site.

4. LOCATION OF EXISTING AND/OR PROPOSED FACILITIES:

- A. There are production facilities on this lease at the present time.
- B. In the event that the well is productive, the necessary production facilities will be installed on the drilling pad. If the well is productive oil, a gas or diesel self-contained unit will be used to provide the necessary power. No power will be required if the well is productive of gas.
- C. A 3" steel flow line will be laid on the surface following the access road to the tank battery on the #1 location.

5. LOCATION AND TYPE OF WATER SUPPLY:

- A. It is planned to drill the proposed well with a fresh water system. The water will be obtained from commercial sources, and will be hauled to the location by truck over the existing and proposed roads shown in Exhibit A.

6. SOURCE OF CONSTRUCTION MATERIALS:

Federal pit located in the NE of Section 15-T23S-R32E.

7. METHODS OF HANDLING WASTE DISPOSAL:

- A. Drill cuttings will be disposed of in the reserve pits.
- B. Drilling fluids will be allowed to evaporate in the reserve pits until the pits are dry.
- C. Water produced during operations will be collected in tanks until hauled to an approved disposal system, or separate disposal application will be submitted.
- D. Oil produced during operations will be stored in tanks until sold.
- E. Current laws and regulations pertaining to the disposal of human waste will be complied with.
- F. All trash, junk, and other waste materials will be contained in trash cages or bins to prevent scattering and will be removed and deposited in an approved sanitary landfill. Burial on site is not approved.

8. ANCILLARY FACILITIES: NONE

9. WELLSITE LAYOUT:

- A. Exhibit C shows the relative location and dimensions of the well pad, the reserve pits, the location of the drilling equipment, rig orientation and access road approach.
- B. The reserve pits will be plastic lined. Yates Petroleum Corporation is in full compliance with the OCD General Plan for Drilling Pits approved on April 15, 2004.
- C. A 400' x 400' area has been staked and flagged.

10. PLANS FOR RESTORATION:

- A. After finishing drilling and/or completion operations, all equipment and other material not needed for further operations will be removed. The location will be cleaned of all trash and junk to leave the well site in as aesthetically pleasing a condition as possible.
- B. Unguarded pits, if any, containing fluids will be fenced until they have dried and been leveled.
- C. If the proposed well is non-productive, all rehabilitation and/or vegetation requirements of the Bureau of Land Management will be complied with and will be accomplished as expeditiously as possible. All pits will be filled level after they have evaporated and dried.

11. SURFACE OWNERSHIP: Federal Surface administered by BLM

12. OTHER INFORMATION:

- A. Topography: Refer to the existing archaeological report for a description of the topography, flora, fauna, soil characteristics, dwellings, and historical and cultural sites.
- B. The primary surface use is for grazing.

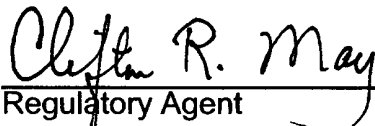
13. OPERATOR'S REPRESENTATIVE:

- | | |
|--|---|
| A. Through A.P.D. Approval:
Clifton R. May, Regulatory Agent
Yates Petroleum Corporation
105 South Fourth Street
Artesia, New Mexico 88210
Phone (505) 748-1471 | B. Through Drilling, Completions & Prod.
Pinson McWhorter, Operations Manager
Yates Petroleum Corporation
105 South Fourth Street
Artesia, New Mexico 88210
Phone (505) 748-1471 |
|--|---|

14. CERTIFICATION:

I hereby certify that I, or persons under my direct supervision, have inspected the proposed drill site and access route, that I am familiar with the conditions which presently exist; that the statements made in this plan are to the best of my knowledge, true and correct; and, that the work associated with the operations proposed herein will be performed by Yates Petroleum Corporation and its contractors and subcontractors in conformity with this plan and the terms and conditions under which it is approved. This statement is subject to the provisions of 18 U.S.C. 1001 for the filing of a false statement.

07/19/2004

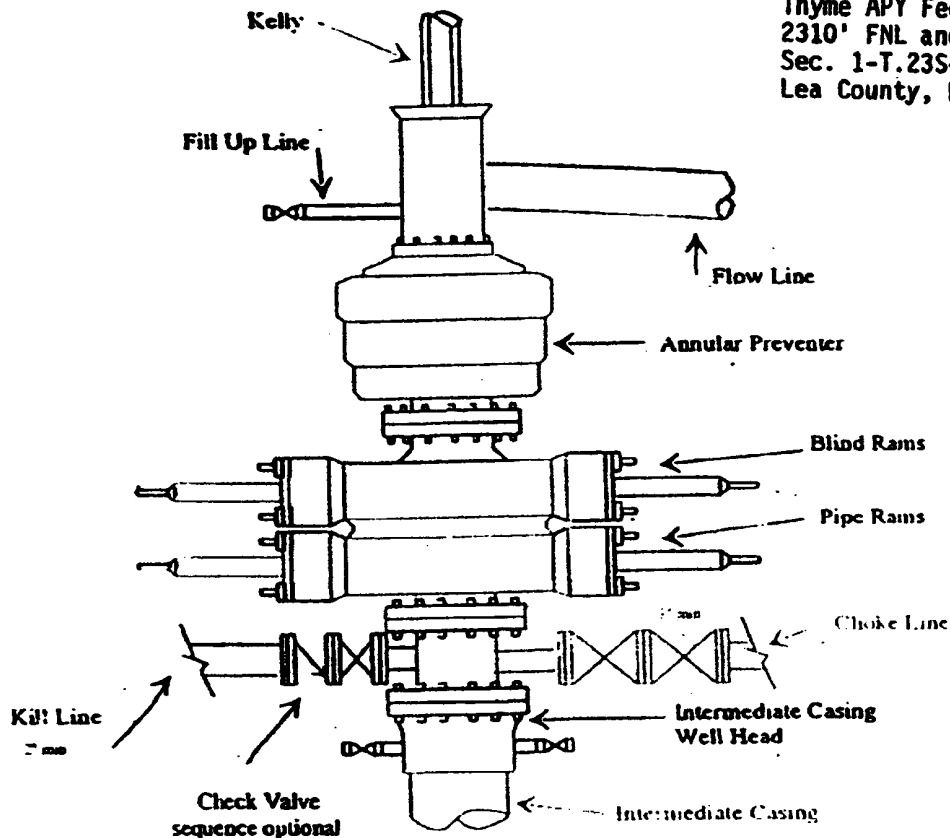

Regulatory Agent



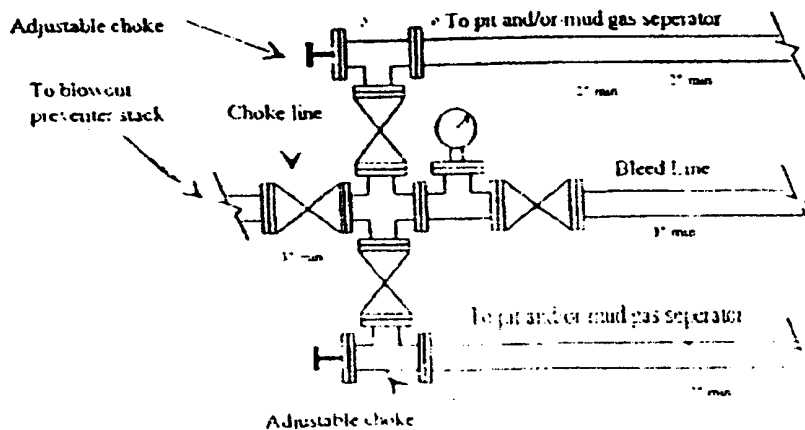
Leas Petroleum Corporation
Typical 3,000 psi Pressure System
Schematic
Annular with Double Ram Preventer Stack

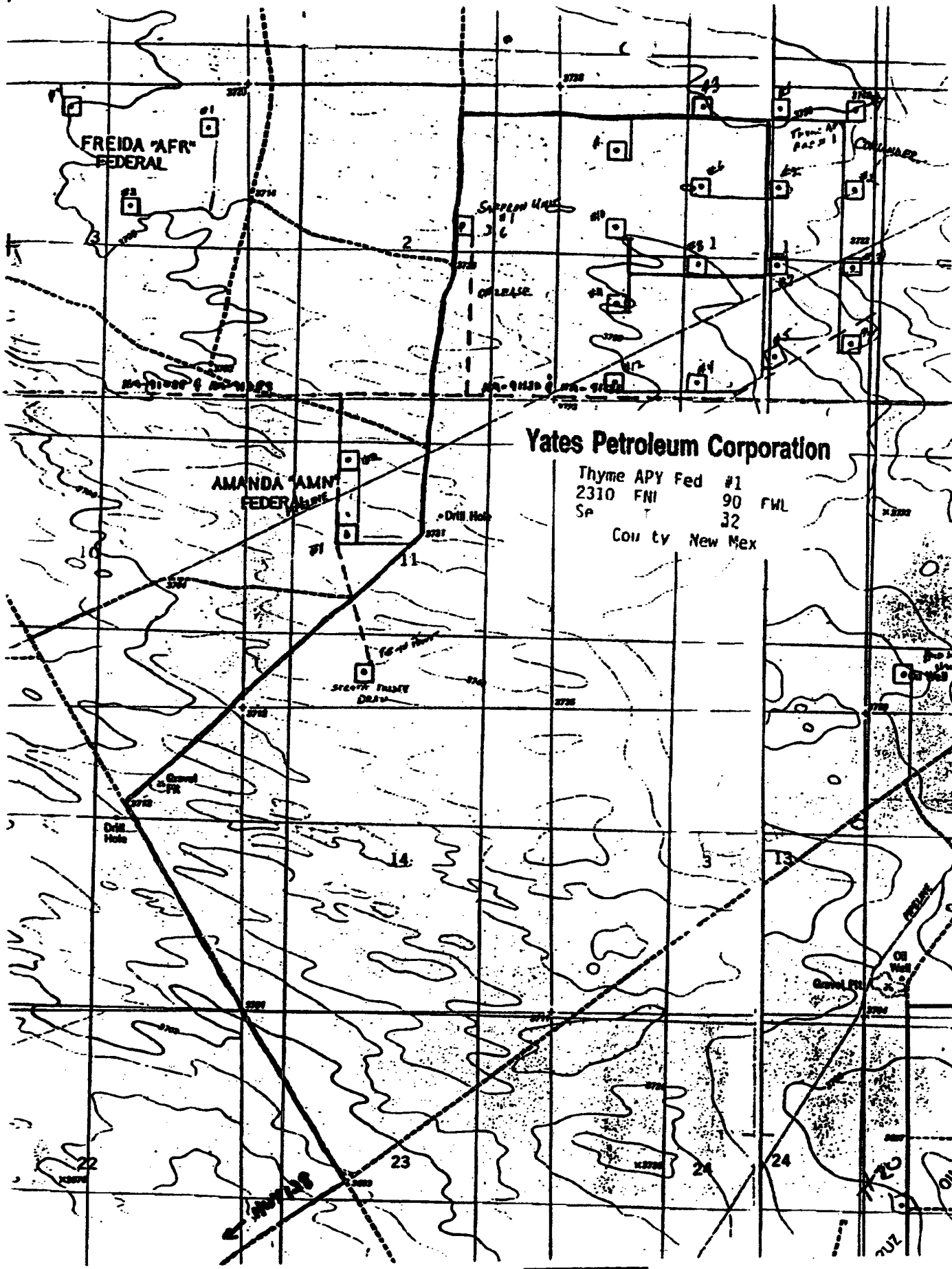
BOP-3

Thyme APY Fed. #10
2310' FNL and 990' FWL
Sec. 1-T.23S-R.32E
Lea County, New Mexico



Typical 3,000 psi choke manifold assembly with at least these minimum features





Yates Petroleum Corporation

Thyme APY Fed #1
2310 FNI 90 FWL
Sp 32
County New Mex

State of New Mexico
Energy Minerals and Natural Resources

Form C-144
March 12, 2004

French Dr., Hobbs, NM 88240
District III
1000 Rio Brazos Road, Aztec, NM 87410
District IV
1220 S. St. Francis Dr., Santa Fe, NM 87505

Oil Conservation Division
1220 South St. Francis Dr.
Santa Fe, NM 87505

For drilling and production facilities, submit to appropriate NMOCD District Office.
For downstream facilities, submit to Santa Fe office

Pit or Below-Grade Tank Registration or Closure

Is pit or below-grade tank covered by a "general plan"? Yes ☒ No ☐

Type of action: Registration of a pit or below-grade tank ☒ Closure of a pit or below-grade tank ☐

Operator: Yates Petroleum Corporation Telephone: (505) 748-4347 e-mail address: debbiec@ypcnm.com
Address: 105 South 4th Street, Artesia, NM 88210 Facility or well name: Thyme APY Federal #10 API #: 30-025-36887 U/L or Q/L or Qtr E Sec 1 T 23S R 32E
County: Lea Latitude _____ Longitude _____ NAD: 1927 ☒ 1983 ☐ Surface Owner - Federal ☒ State ☐ Private ☐ Indian ☐

Pit Type: Drilling ☒ Production ☐ Disposal ☐

Workover ☐ Emergency ☐

Lined ☒ Unlined ☐

Liner type: Synthetic ☒ Thickness 20 mil

Clay ☐ Volume 28,000 bbl

Below-grade tank

Volume: _____ bbl Type of fluid: _____

Construction material: _____

Double-walled, with leak detection? Yes ☐ If not, explain why not. _____

Depth to ground water (vertical distance from bottom of pit to seasonal high water elevation of ground water.)

Less than 50 feet

(20 points)

50 feet or more, but less than 100 feet

(10 points)

100 feet or more

(0 points)

Wellhead protection area: (Less than 200 feet from a private domestic water source, or less than 1000 feet from all other water sources.)

Yes

(20 points)

No

(0 points)

Distance to surface water: (horizontal distance to all wetlands, playas, irrigation canals, ditches, and perennial and ephemeral watercourses.)

Less than 200 feet

(20 points)

200 feet or more, but less than 1000 feet

(10 points)

1000 feet or more

(0 points)

Ranking Score (Total Points)

0 Points

If this is a pit closure: (1) attach a diagram of the facility showing the pit's relationship to other equipment and tanks. (2) Indicate disposal location:

onsite ☐ offsite ☐ If offsite, name of facility _____ (3) Attach a general description of remedial action taken including remediation start date and end date. (4) Groundwater encountered: No ☐ Yes ☐ If yes, show depth below ground surface _____ ft. and attach sample results. (5) Attach soil sample results and a diagram of sample locations and excavations.

I hereby certify that the information above is true and complete to the best of my knowledge and belief. I further certify that the above-described pit or below-grade tank has been/will be constructed or closed according to NMOCD guidelines ☐, a general permit ☒, or an (attached) alternative OCD-approved plan ☐.

Date: September 23, 2004

Printed Name/Title Clifton R. May/Regulatory Agent Signature Clifton R. May

Your certification and NMOCD approval of this application/closure does not relieve the operator of liability should the contents of the pit or tank contaminate ground water or otherwise endanger public health or the environment. Nor does it relieve the operator of its responsibility for compliance with any other federal, state, or local laws and/or regulations.

Approval:

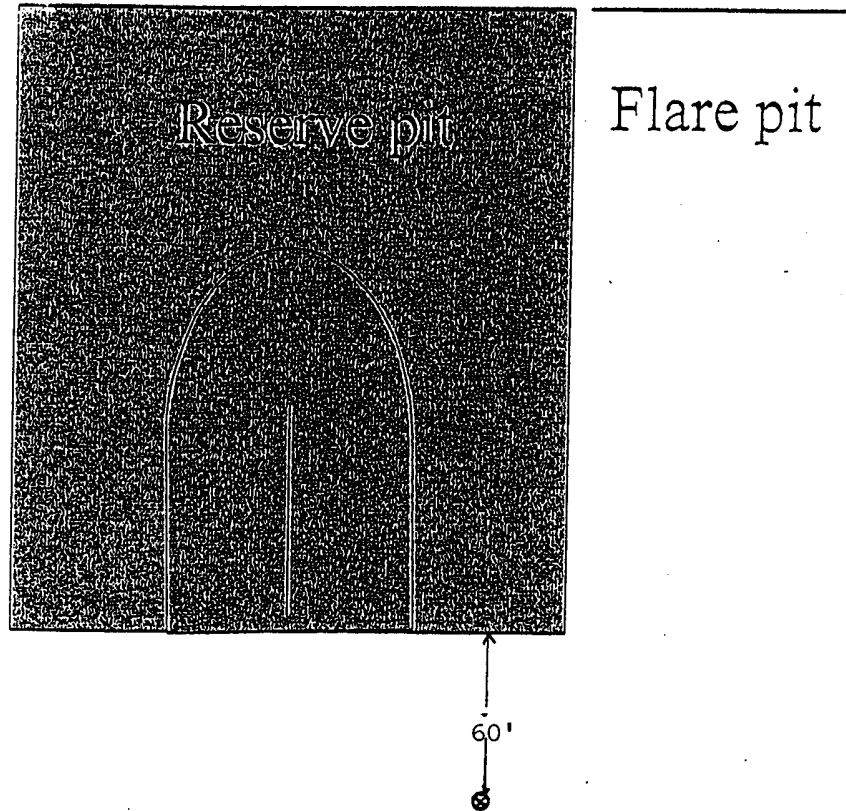
Date: 9/27/04

Printed Name/Title _____

Signature [Signature]

YATES PETROLEUM CORPORATION
General Plan was approved 4/15/04

The reserve pit will be to the north.
The southeast corner of the pit will
be approximately 60' north of the well
bore. The pit will be a 175' X 150'
and 6' deep with a capacity of 28,000
bbls.



Standard reserve pit. All Reserve pits are double
Horse shoe size varies with depth of well