

District I

1625 N. French Dr., Hobbs, NM 88240

District II

1301 W. Grand Avenue, Artesia, NM 88210

District III

1000 Rio Brazos Road, Aztec, NM 87410

District IV

1220 S. St. Francis Dr., Santa Fe, NM 87505

State of New Mexico  
Energy Minerals and Natural Resources

Oil Conservation Division  
1220 South St. Francis Dr.  
Santa Fe, NM 87505

Form C-101  
Revised June 10, 2003

Submit to appropriate District Office  
State Lease - 6 Copies  
Fee Lease - 5 Copies

☐ AMENDED REPORT

**APPLICATION FOR PERMIT TO DRILL, RE-ENTER, DEEPEN, PLUGBACK, OR ADD A ZONE**

<sup>1</sup> Operator Name and Address THOMPSON, J. CLEO P.O. BOX 12577 ODESSA, TX 79768-2577		<sup>2</sup> OGRID Number 11181
<sup>3</sup> Property Code 34282	<sup>5</sup> Property Name LAWRENCE	<sup>3</sup> API Number 30 - 025 - 36898
		<sup>6</sup> Well No. 1

<sup>7</sup> Surface Location

UL or lot no.	Section	Township	Range	Lot Idn	Feet from the	North/South line	Feet from the	East/West line	County
H	14	16-S	38-E		2531	NORTH	630	EAST	LEA

<sup>8</sup> Proposed Bottom Hole Location If Different From Surface

UL or lot no.	Section	Township	Range	Lot Idn	Feet from the	North/South line	Feet from the	East/West line	County

<sup>9</sup> Proposed Pool 1 KNOWLES NORTH <i>Devonian</i>	<sup>10</sup> Proposed Pool 2
--	-------------------------------

<sup>11</sup> Work Type Code N	<sup>12</sup> Well Type Code 0	<sup>13</sup> Cable/Rotary R	<sup>14</sup> Lease Type Code P	<sup>15</sup> Ground Level Elevation 3702
<sup>16</sup> Multiple NO	<sup>17</sup> Proposed Depth 13,300	<sup>18</sup> Formation DEVONIAN	<sup>19</sup> Contractor PATTERSON	<sup>20</sup> Spud Date 10/05/2004

<sup>21</sup> Proposed Casing and Cement Program

Hole Size	Casing Size	Casing weight/foot	Setting Depth	Sacks of Cement	Estimated TOC
17 1/2	13 3/8	48	300	430	SURFACE
12 1/4	9 5/8	40	5000	1600	SURFACE
8 3/4	5 1/2	17	13,300	1400	7500'
OPTIONAL	7" CASING STRING	MAY BE SET IF	NEEDED		

<sup>22</sup> Describe the proposed program. If this application is to DEEPEN or PLUG BACK, give the data on the present productive zone and proposed new productive zone. Describe the blowout prevention program, if any. Use additional sheets if necessary.

DRILL TO 300', SET 13 3/8 CSG & CEMENT TO SURFACE.

DRILL TO 5000' (TOP OF SAN ANDRES) WITH BRINE WATER & NATIVE SOLIDS; SET 9 5/8 CASING & CEMENT TO SURFACE.

DRILL TO TD W/8 3/4 BIT & SET 5 1/2 17# N-80 & P-110 CASING.

AN OPTIONAL 7" CASING STRING MAY BE SET IF HOLE PROBLEMS ARE ENCOUNTERED

☒ Approval for drill only - Cannot produce until Non-Standard location approved in Santa Fe.

<sup>23</sup> I hereby certify that the information given above is true and complete to the best of my knowledge and belief. Signature: <i>J E Stevens</i> Printed name: JIM STEVENS Title: OPERATIONS MANAGER E-mail Address: jctwest@nts-online.net Date: 09/13/2004 Phone: (432)550-8887	<b>OIL CONSERVATION DIVISION</b> Approved by: <i>[Signature]</i> Title: PETROLEUM ENGINEER Approval Date: OCT 01 2004 Expiration Date: Conditions of Approval: Attached <input checked="" type="checkbox"/> <i>See X</i>
---	--

District I  
PO Box 1980, Hobbs, NM 88241-1980  
District II  
811 South First, Artesia, NM 88210  
District III  
1000 Rio Brazos Rd., Aztec, NM 87410  
District IV  
2040 South Pacheco, Santa Fe, NM 87505

State of New Mexico  
Energy, Minerals & Natural Resources Department

OIL CONSERVATION DIVISION  
2040 South Pacheco  
Santa Fe, NM 87505

Form C-102  
Revised October 18, 1994  
Instructions on back  
Submit to Appropriate District Office  
State Lease - 4 Copies  
Fee Lease - 3 Copies

☐ AMENDED REPORT

WELL LOCATION AND ACREAGE DEDICATION PLAT

1 API Number <b>30-025-36898</b>		2 Pool Code <b>36330</b>		3 Pool Name Knowles North Devonian		
4 Property Code <b>34282</b>		5 Property Name Lawrence			6 Well Number 1	
7 OGRID No.		8 Operator Name J. Cleo Thompson			9 Elevation 3702'	

10 Surface Location

UL or lot no.	Section	Township	Range	Lot Idn	Feet from the	North/South line	Feet from the	East/West line	County
H	14	16-S	38-E		2531	North	630	East	Lea

11 Bottom Hole Location If Different From Surface

UL or lot no.	Section	Township	Range	Lot Idn	Feet from the	North/South line	Feet from the	East/West line	County

12 Dedicated Acres 80	13 Joint or Infill	14 Consolidation Code	15 Order No.
--------------------------	--------------------	-----------------------	--------------

NO ALLOWABLE WILL BE ASSIGNED TO THIS COMPLETION UNTIL ALL INTERESTS HAVE BEEN CONSOLIDATED  
OR A NON-STANDARD UNIT HAS BEEN APPROVED BY THE DIVISION

<p>16</p> <p>GR ELEV 3702'</p> <p>J. Cleo Thompson "Lawrence" Lease</p>	<p>17 OPERATOR CERTIFICATION</p> <p>I hereby certify that the information contained herein is true and complete to the best of my knowledge and belief</p> <p><i>J.E. Stevens</i> Signature J.E. STEVENS Printed Name OPERATIONS MANAGER Title SEPT 24, 2004 Date</p>
	<p>18 SURVEYOR CERTIFICATION</p> <p>I hereby certify that the well location shown on this plat was plotted from field notes of actual surveys made by me or under my supervision, and that the same is true and correct to the best of my belief.</p> <p>August 5, 2004 Date of Survey</p> <p>Revised 09/23/04 Signature and Seal of Professional Surveyor: <i>Max A. Schumann, Jr.</i> Max A. Schumann, Jr. Certificate Number 1510</p>

Job No. 68,859



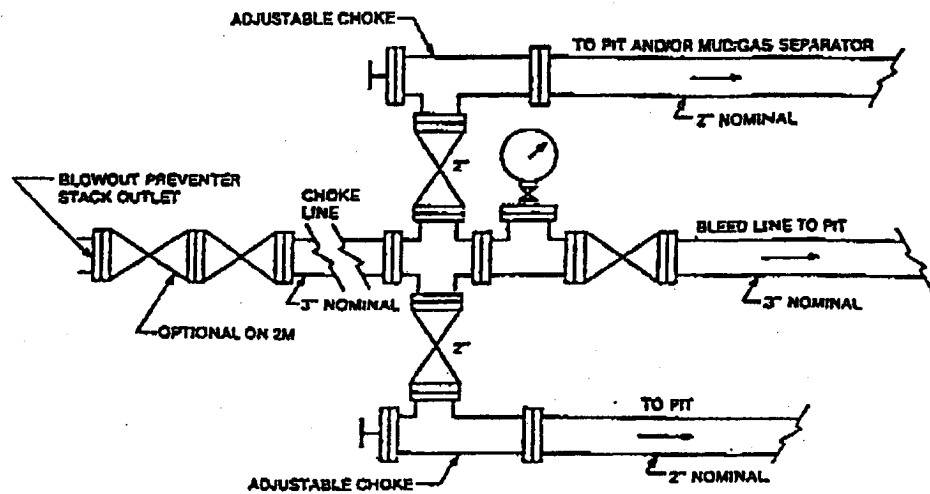


FIGURE K4-1. Typical choke manifold assembly for ZM and 3M rated working pressure service — surface installation.

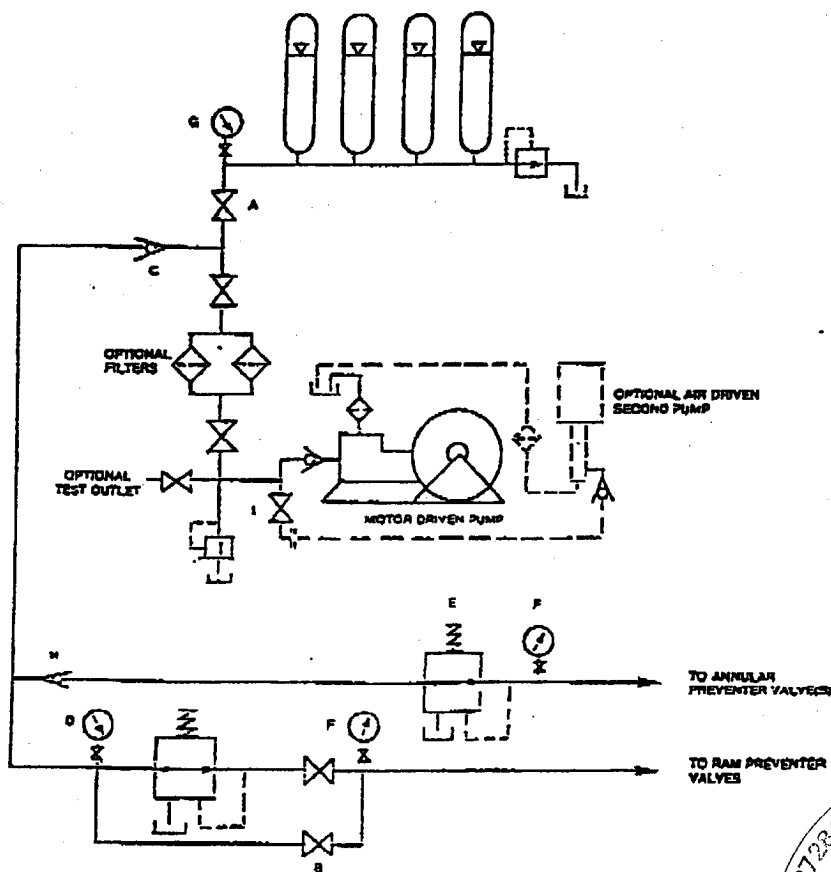
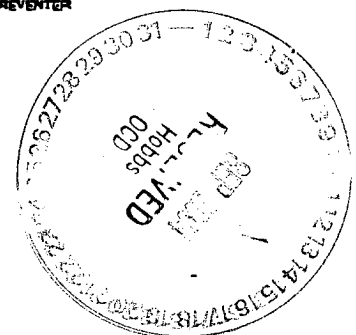


FIGURE K6-1. The schematic sketch of an accumulator system shows required and optional components.



District I  
1625 N. French Dr., Hobbs, NM 88240  
District II  
1301 W. Grand Avenue, Artesia, NM 88210  
District III  
1000 Rio Brazos Road, Aztec, NM 87410  
District IV  
1220 S. St. Francis Dr., Santa Fe, NM 87505

State of New Mexico  
Energy Minerals and Natural Resources

Form C-144  
June 1, 2004

Oil Conservation Division  
1220 South St. Francis Dr.  
Santa Fe, NM 87505

For drilling and production facilities, submit to appropriate NMOCD District Office.  
For downstream facilities, submit to Santa Fe office

**Pit or Below-Grade Tank Registration or Closure**

Is pit or below-grade tank covered by a "general plan"? Yes ☐ No ☐

Type of action: Registration of a pit or below-grade tank ☒ Closure of a pit or below-grade tank ☐

Operator: J. CLEO THOMPSON Telephone: (432) 550-8887 e-mail address: jctwest@nts-online.net  
Address: P.O. BOX 12577, ODESSA, TX 79765-2577  
Facility or well name: LAWRENCE NO. 1 API #: 30-025-36898 U/L or Qtr/Qtr H Sec 14 T 16 S R 38-E  
County: LEA Latitude                      Longitude                      NAD: 1927 ☐ 1983 ☐ Surface Owner Federal ☐ State ☐ Private ☒ Indian ☐

**Pit**

Type: Drilling ☒ Production ☐ Disposal ☐

Workover ☐ Emergency ☐

Lined ☒ Unlined ☐

Liner type: Synthetic ☒ Thickness 12 mil Clay ☐

Pit Volume 11,000 bbl

**Below-grade tank**

Volume:            bbl Type of fluid:                     

Construction material:                     

Double-walled, with leak detection? Yes ☐ If not, explain why not.                     

Depth to ground water (vertical distance from bottom of pit to seasonal high water elevation of ground water.)

Less than 50 feet	(20 points)
50 feet or more, but less than 100 feet	(10 points)
<u>100 feet or more</u>	( 0 points)

Wellhead protection area: (Less than 200 feet from a private domestic water source, or less than 1000 feet from all other water sources.)

Yes	(20 points)
<u>No</u>	( 0 points)

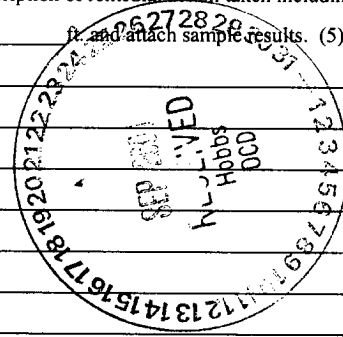
Distance to surface water: (horizontal distance to all wetlands, playas, irrigation canals, ditches, and perennial and ephemeral watercourses.)

Less than 200 feet	(20 points)
200 feet or more, but less than 1000 feet	(10 points)
<u>1000 feet or more</u>	( 0 points)

**Ranking Score (Total Points)**

**If this is a pit closure:** (1) attach a diagram of the facility showing the pit's relationship to other equipment and tanks. (2) Indicate disposal location: (check the onsite box if you are burying in place) onsite ☐ offsite ☐ If offsite, name of facility                     . (3) Attach a general description of remedial action taken including remediation start date and end date. (4) Groundwater encountered: No ☐ Yes ☐ If yes, show depth below ground surface                      ft. and attach sample results. (5) Attach soil sample results and a diagram of sample locations and excavations.

Additional Comments:                     



I hereby certify that the information above is true and complete to the best of my knowledge and belief. I further certify that the above-described pit or below-grade tank has been/will be constructed or closed according to NMOCD guidelines ☒ a general permit ☐, or an (attached) alternative OCD-approved plan ☐.

Date: 9/16/04

Printed Name/Title J.E. STEVENS, OPERATIONS MANAGER Signature J.E. Stevens

Your certification and NMOCD approval of this application/closure does not relieve the operator of liability should the contents of the pit or tank contaminate ground water or otherwise endanger public health or the environment. Nor does it relieve the operator of its responsibility for compliance with any other federal, state, or local laws and/or regulations.

Approval: [Signature]

Printed Name/Title                     

Signature [Signature]