

DISTRICT I
1625 N. French Dr., Hobbs, NM 88240

DISTRICT II
1301 W. Grand Avenue, Artesia, NM 88210

DISTRICT III
1000 Rio Brazos Rd., Aztec, NM 87410

DISTRICT IV
1220 S. St. Francis Dr., Santa Fe, NM 87505

State of New Mexico

Energy, Minerals, and Natural Resources Department

OIL CONSERVATION DIVISION

1220 South St. Francis Dr.

Santa Fe, New Mexico 87505

Form C-102

Revised August 15, 2000

Submit to Appropriate District Office

State Lease - 4 copies

Fee Lease - 3 copies

☐ AMENDED REPORT

WELL LOCATION AND ACREAGE DEDICATION PLAT

¹ API Number 42-025-36715	² Pool Code 59890	³ Pool Name Trinity; Wolfcamp
⁴ Property Code 300079	⁵ Property Name BURRUS 26	⁶ Well Number 2
⁷ OGRID No. 147179	⁸ Operator Name CHESAPEAKE OPERATING, INC.	⁹ Elevation 3789'

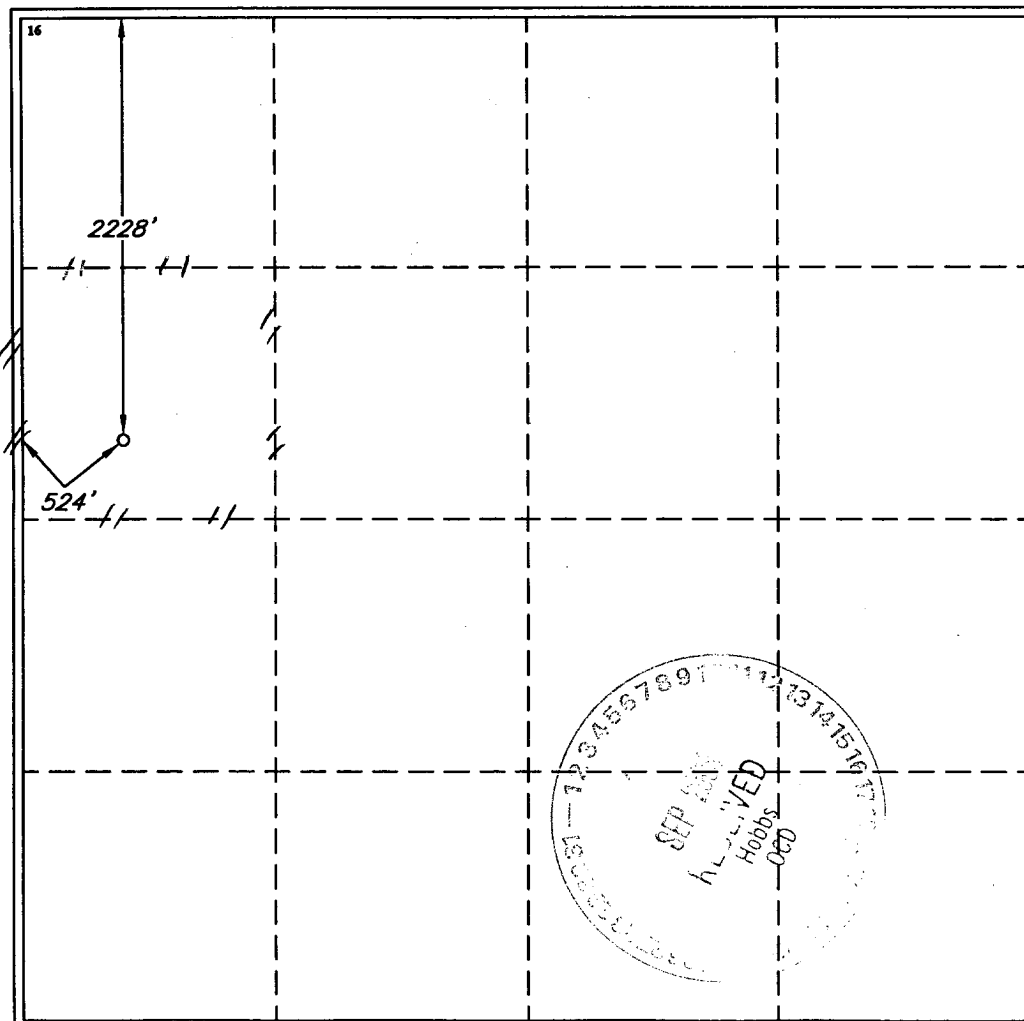
¹⁰ Surface Location

UL or lot no.	Section	Township	Range	Lot Idn	Feet from the	North/South line	Feet from the	East/West line	County
E	26	12 SOUTH	38 EAST, N.M.P.M.		2228'	NORTH	524'	WEST	LEA

¹¹ Bottom Hole Location If Different From Surface

UL or lot no.	Section	Township	Range	Lot Idn	Feet from the	North/South line	Feet from the	East/West line	County
¹² Dedicated Acres 40		¹³ Joint or Infill		¹⁴ Consolidation Code		¹⁵ Order No.			

NO ALLOWABLE WELL BE ASSIGNED TO THIS COMPLETION UNTIL ALL INTERESTS HAVE BEEN CONSOLIDATED OR A NON-STANDARD UNIT HAS BEEN APPROVED BY THE DIVISION



¹⁷ OPERATOR CERTIFICATION

I hereby certify that the information contained herein is true and complete to the best of my knowledge and belief.

Brenda Coffman
Signature

Brenda Coffman

Printed Name

Regulatory Analyst

Title

August 30, 2004

Date

¹⁸ SURVEYOR CERTIFICATION

I hereby certify that the well location shown on this plat was plotted from field notes of actual surveys made by me or under my supervision, and that the same is true and correct to the best of my belief.

APRIL 23, 2004

Date of Survey

Signature and Seal of Professional Surveyor

V. L. BEZNER
Signature
V. L. BEZNER
R.P.S. #7920
Certificate Number

JOB # 94595 / 145 SE / E.U.O.