

District I
1625 N. French Dr., Hobbs, NM 88240
District II
1301 W. Grand Avenue, Artesia, NM 88210
District III
1000 Rio Brazos Road, Aztec, NM 87410
District IV
1220 S. St. Francis Dr., Santa Fe, NM 87505

State of New Mexico
Energy Minerals and Natural Resources

Oil Conservation Division
1220 South St. Francis Dr.
Santa Fe, NM 87505

Form C-101
March 4, 2004

Submit to appropriate District Office
State Lease - 6 Copies
Fee Lease - 5 Copies

☐ AMENDED REPORT

APPLICATION FOR PERMIT TO DRILL, RE-ENTER, DEEPEN, PLUGBACK, OR ADD A ZONE

¹ Operator Name and Address COMPASS OPERATING L.L.C. 400 WEST ILLINOIS MIDLAND, TEXAS 79701		² OGRID Number 230821
³ Property Code 34367		⁴ API Number 30 - 025-36920
⁵ Property Name LEE "25" STATE		⁶ Well No. 1

7 Surface Location

UL or lot no. 0	Section 25	Township 17S	Range 35E	Lot Idn	Feet from the 865'	North/South line SOUTH	Feet from the 2172'	East/West line EAST	County LEA
--------------------	---------------	-----------------	--------------	---------	-----------------------	---------------------------	------------------------	------------------------	---------------

8 Proposed Bottom Hole Location If Different From Surface

UL or lot no.	Section	Township	Range	Lot Idn	Feet from the	North/South line	Feet from the	East/West line	County
---------------	---------	----------	-------	---------	---------------	------------------	---------------	----------------	--------

⁹ Proposed Pool 1
WILDCAT BONE SPRING

¹⁰ Proposed Pool 2

Drilling Pit Location and Other Information

UL or lot no. 0	Section 25	Township 17S	Range 35E	Lot Idn	Feet from the 865'	North/South line SOUTH	Feet from the 2172'	East/West line EAST	County LEA
Depth to ground water 75'		Distance from nearest fresh water well .7 Mi.		Distance from nearest surface water None known					
¹¹ Work Type Code N		¹² Well Type Code 0		¹³ Cable/Rotary ROTARY		¹⁴ Lease Type Code S		¹⁵ Ground Level Elevation 3893'	
¹⁶ Multiple NO		¹⁷ Proposed Depth 9300'		¹⁸ Formation BONE SPRING		¹⁹ Contractor MCVAY DRILLING		²⁰ Spud Date WHEN APPROVED	

21 Proposed Casing and Cement Program

Hole Size	Casing Size	Casing weight/foot	Setting Depth	Sacks of Cement	Estimated TOC
25"	20"	Conductor	40'	Redi-mix	SURFACE.
17½"	13 3/8"	61	400'	400 Sx.	Surface
11"	8 5/8"	32	3500'	950 Sx	Surface
7 7/8"	5½"	17	9300'	900 Sx.	Est. TOC 4000

²² Describe the proposed program. If this application is to DEEPEN or PLUG BACK, give the data on the present productive zone and propose new productive zone. Describe the blowout prevention program, if any. Use additional sheets if necessary.

SEE ATTACHED SHEET

²³ I hereby certify that the information given above is true and complete to the best of my knowledge and belief. I further certify that the drilling pit will be constructed according to NMOC guidelines ☒ a general permit ☐, or an (attached) alternative OCD-approved plan ☐

Signature:

Printed name: Joe T. Janica

Title:

E-mail Address:

Date: 09/29/04

Phone: 505-391-8503

OIL CONSERVATION DIVISION

Approved by:

Title:

Approval Date:

Expiration Date:

Conditions of Approval:

Attached ☐

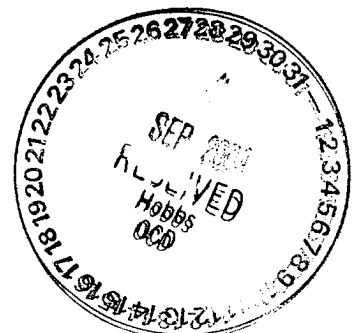
OCT 25 2004

COMPASS OPERATING, LLC
~~LEE~~ LEA "25" STATE # 1
UNIT "O" SECTION 25
T17S-R35E LEA CO. NM

1. Drill 25" hole to 40'. Set 40' of 20" conductor pipe and cement to surface with Redi-mix.
2. Drill 17½" hole to 400'. Run and set 400' of 13 3/8" 61# J-55 ST&C casing. Cement with 400 Sx. of Class "C" cement + ¼# Flocele/Sx, + 2% CaCl, circulate cement to surface.
3. Drill 11" hole to 3500'. Run and set 3500' of 8 5/8" 32# J-55 ST&C casing. Cement with 450 Sx. of Class "C" Light cement + additives, tail in with 500 Sx. of Class "C" cement + ¼# Flocele/Sx. and 2% CaCl, circulate cement to surface.
4. Drill 7 7/8" hole to 9300'. Run and set 9300' of 5½" casing as follows: 4300' of 5½" 17# L-80 LT&C, 5000' of 5½" 17# J-55 LT&C casing. Cement with 500 Sx. of Class "H" Light weight cement + additives, tail in with 400 Sx. of Class "H" Premium Plus cement + additives, tie top of cement into the 8 5/8" casing at 3300'±.

MUD PROGRAM

1. Use fresh water on the surface hole.
2. Brine water mud system while drillint the salt section to 3500'.
3. Use the mud system that will satisfy hole cleaning requirements and safe drilling.



DISTRICT I
1625 N. FRENCH DR., HOBBES, NM 86240

State of New Mexico
Energy, Minerals and Natural Resources Department

DISTRICT II
1301 W. GRAND AVENUE, ARTESIA, NM 88210

OIL CONSERVATION DIVISION
1220 SOUTH ST. FRANCIS DR.
Santa Fe, New Mexico 87505

Form C-102
Revised JUNE 10, 2003
Submit to Appropriate District Office
State Lease - 4 Copies
Fee Lease - 3 Copies

DISTRICT III
1000 Rio Brazos Rd., Aztec, NM 87410

DISTRICT IV
1220 S. ST. FRANCIS DR., SANTA FE, NM 87505

WELL LOCATION AND ACREAGE DEDICATION PLAT

☐ AMENDED REPORT

API Number 30-025-36920	Pool Code ✓	Pool Name WILDCAT-BONE SPRING
Property Code 34367	Property Name LEE 25 STATE	Well Number 1
OGRID No. 230821	Operator Name COMPASS OPERATING, LLC	Elevation 3893'

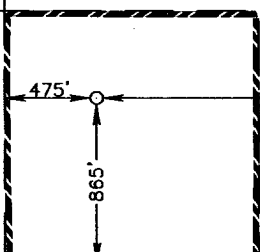
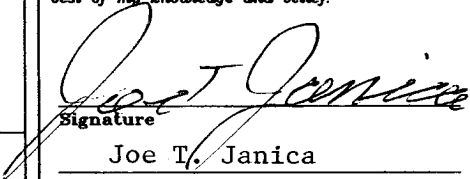
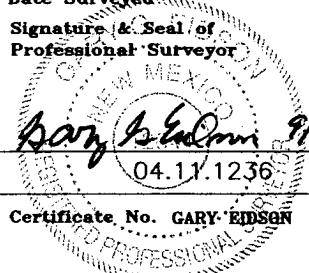
Surface Location

UL or lot No.	Section	Township	Range	Lot Idn	Feet from the	North/South line	Feet from the	East/West line	County
0	25	17-S	35-E		865	SOUTH	2172	EAST	LEA

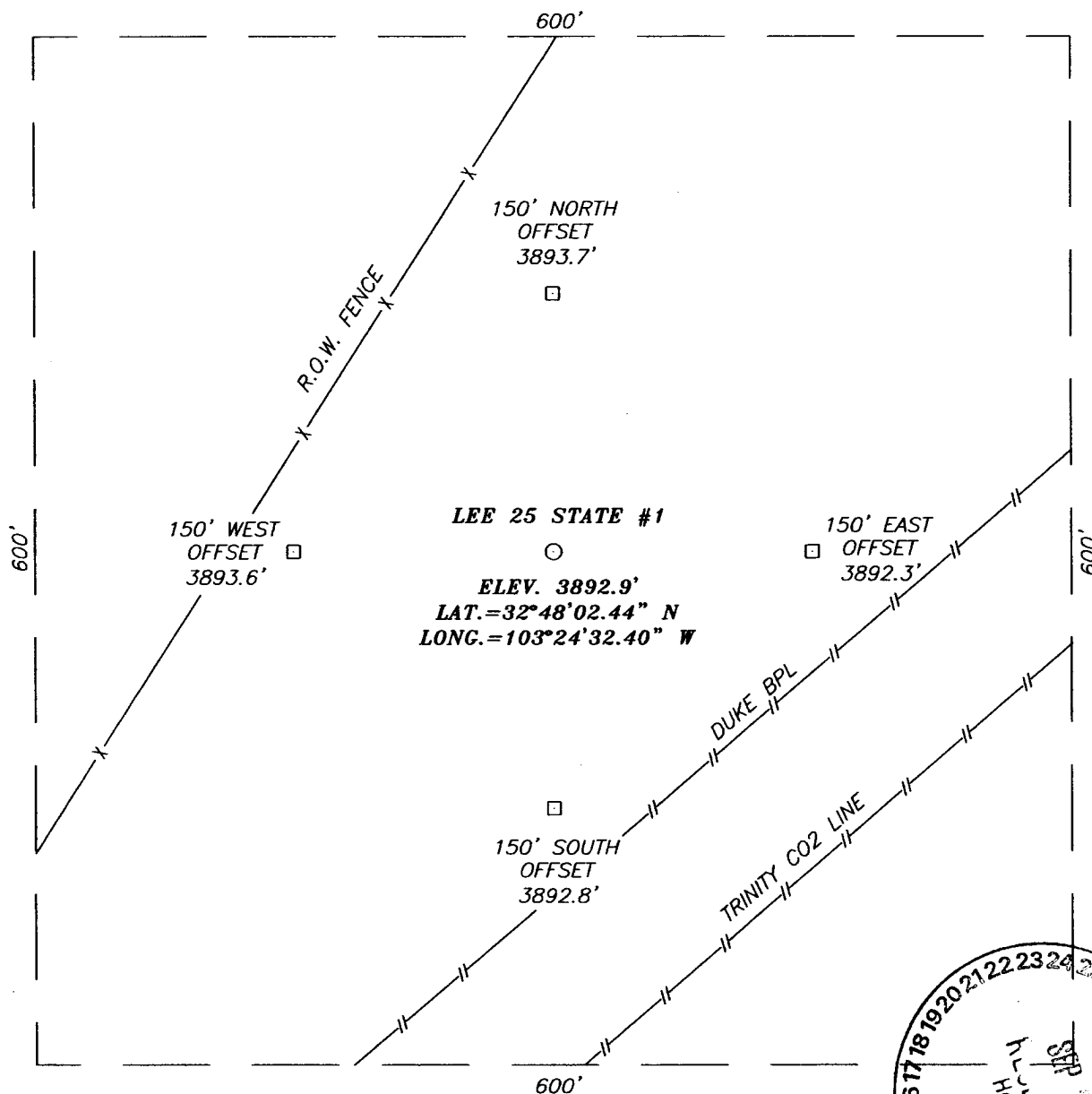
Bottom Hole Location If Different From Surface

UL or lot No.	Section	Township	Range	Lot Idn	Feet from the	North/South line	Feet from the	East/West line	County
Dedicated Acres 40	Joint or Infill	Consolidation Code	Order No.						

NO ALLOWABLE WILL BE ASSIGNED TO THIS COMPLETION UNTIL ALL INTERESTS HAVE BEEN CONSOLIDATED
OR A NON-STANDARD UNIT HAS BEEN APPROVED BY THE DIVISION

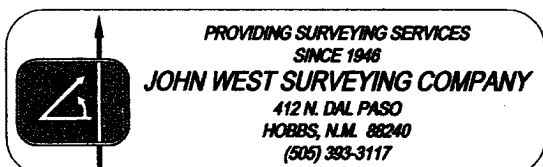
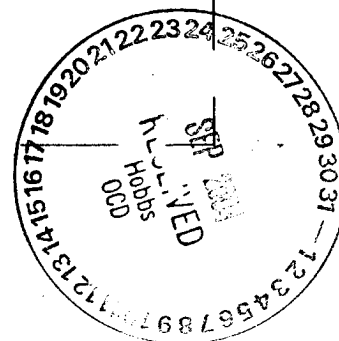
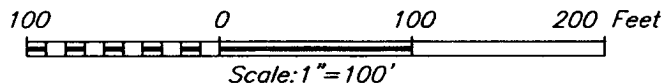
<p>GEODETIC COORDINATES NAD 27 NME Y=656238.8 N X=784026.1 E LAT.=32°48'02.44" N LONG.=103°24'32.40" W</p> 	<p>OPERATOR CERTIFICATION</p> <p>I hereby certify the the information contained herein is true and complete to the best of my knowledge and belief.</p> <p> Signature Joe T. Janica Printed Name Agent Title Date 09/29/2004</p> <p>SURVEYOR CERTIFICATION</p> <p>I hereby certify that the well location shown on this plat was plotted from field notes of actual surveys made by me or under my supervision and that the same is true and correct to the best of my belief.</p> <p>SEPTEMBER 22, 2004</p> <p>Date Surveyed _____ LA Signature & Seal of Professional Surveyor  Certificate No. GARY EDSON 12841</p>
--	--

SECTION 25, TOWNSHIP 17 SOUTH, RANGE 35 EAST, N.M.P.M.,
 LEA COUNTY, NEW MEXICO



DIRECTIONS TO LOCATION

FROM THE INTERSECTION OF U.S. HIGHWAY 62-180 AND STATE HIGHWAY #483 GO NORTH ALONG STATE HIGHWAY #483 8.0 MILES AND TURN LEFT ON BUCKEYE. GO 2.75 MILES WEST ON BUCKEYE, AT THIS POINT THE ROAD BENDS SOUTHWEST. CONTINUE ON SAME BUCKEYE ROAD 0.25 MILES & TURN SOUTH ON LEASE ROAD. GO SOUTH 0.15 MILES AND TURN SOUTH-SOUTHWEST ALONG DUKE BPL. GO SOUTH-SOUTHWEST 0.4 MILES AND STOP. THIS LOCATION IS 150' SOUTH.

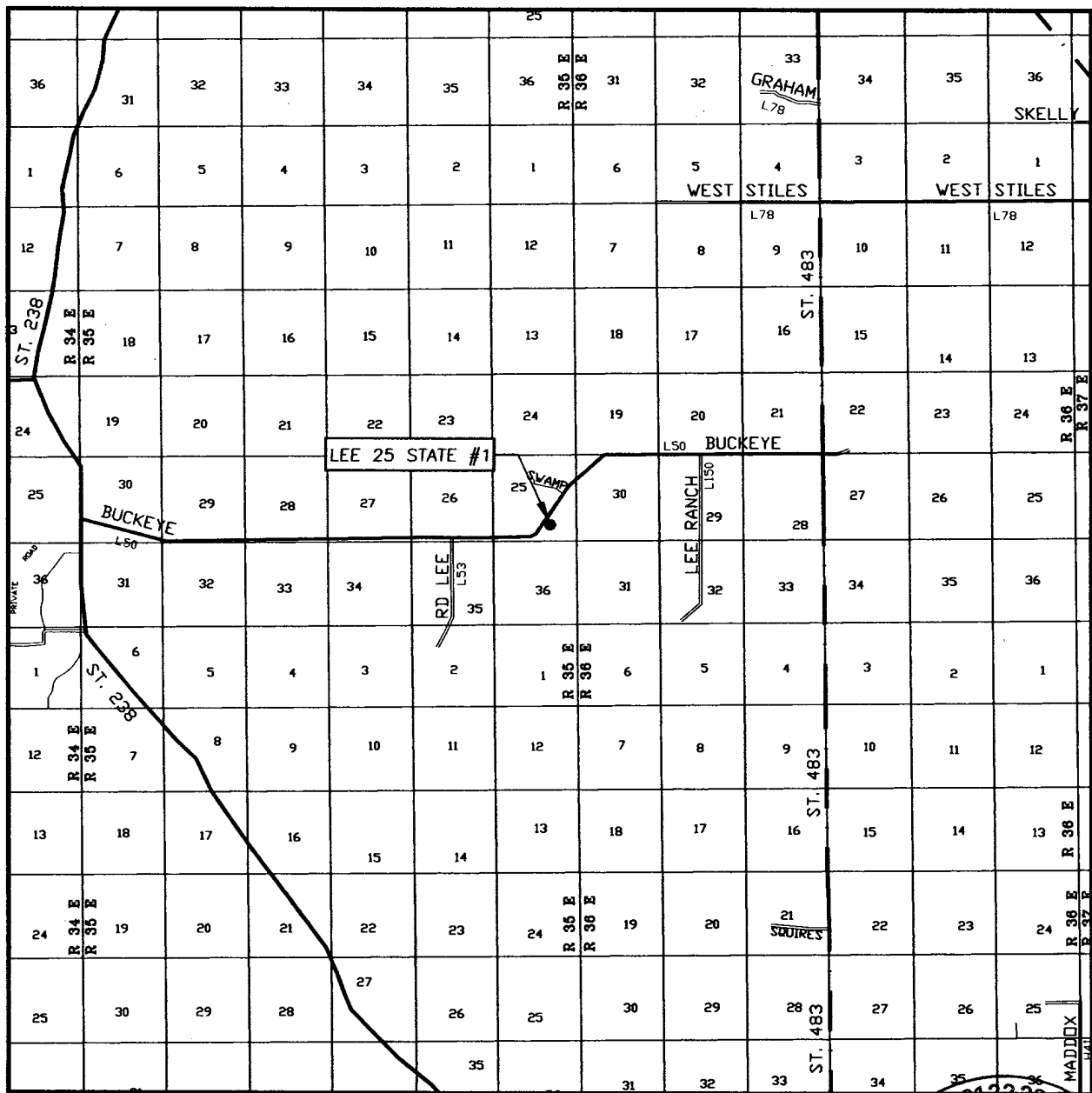


COMPASS OPERATING, LLC

LEE 25 STATE #1 WELL
 LOCATED 865 FEET FROM THE SOUTH LINE
 AND 2172 FEET FROM THE EAST LINE OF SECTION 25,
 TOWNSHIP 17 SOUTH, RANGE 35 EAST, N.M.P.M.,
 LEA COUNTY, NEW MEXICO.

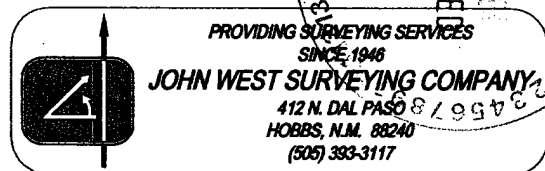
Survey Date: 9/22/04	Sheet 1 of 1 Sheets
W.O. Number: 04.11.1236	Dr By: LA
Date: 9/24/04	Rev 1:N/A
Disk: CD#3	04111236
Scale: 1"=100'	

VICINITY MAP



SCALE: 1" = 2 MILES

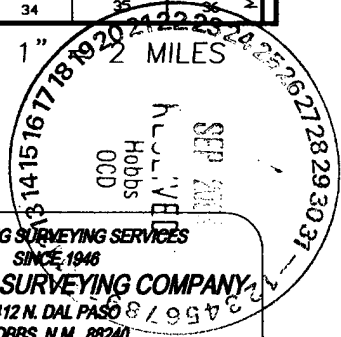
SEC. 25 TWP. 17-S RGE. 35-E
 SURVEY N.M.P.M.
 COUNTY LEA
 DESCRIPTION 865' FWL & 2172' FEL
 ELEVATION 3893'
 OPERATOR COMPASS OPERATING, LLC
 LEASE LEE 25 STATE



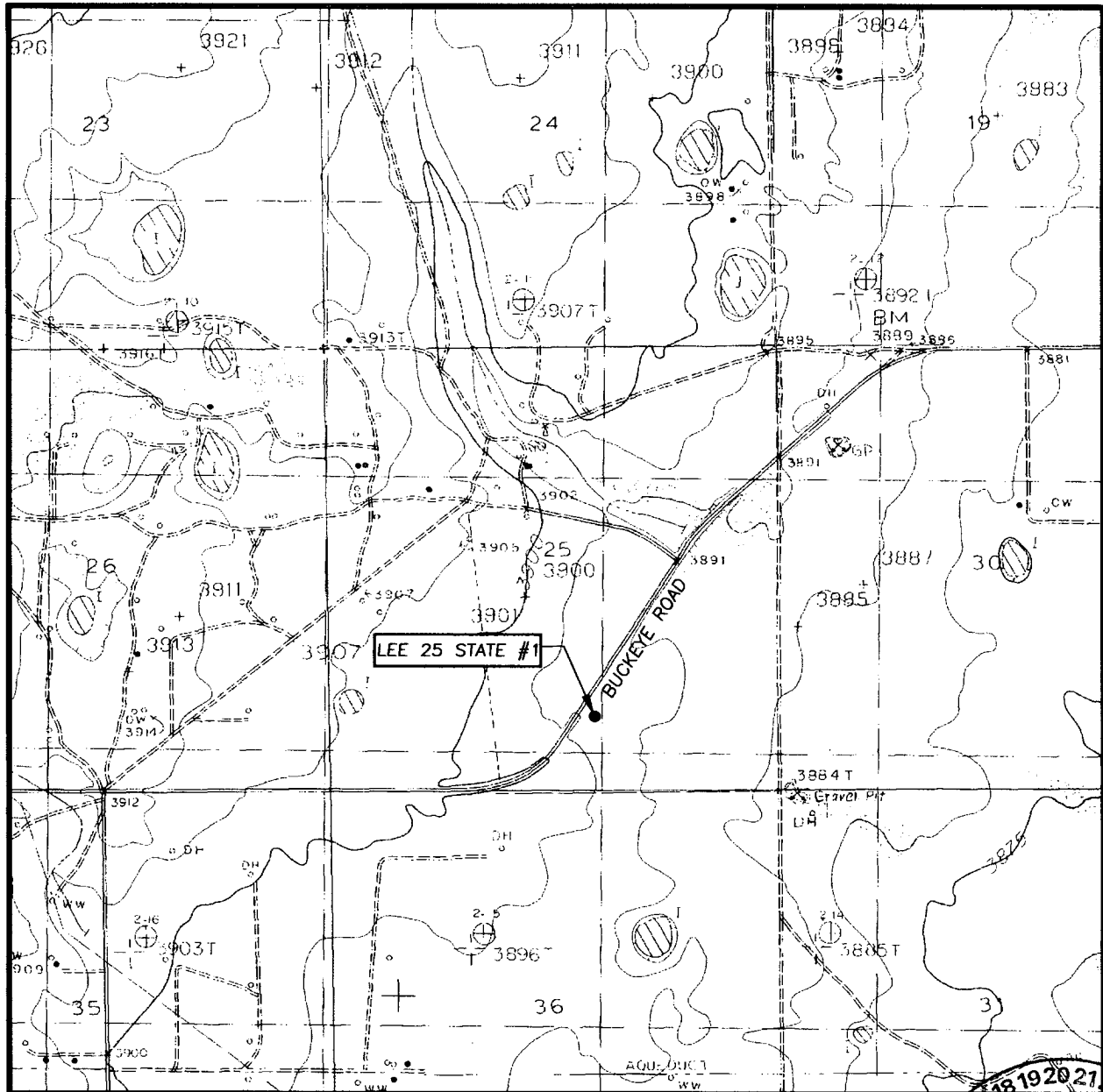
PROVIDING SURVEYING SERVICES
 SINCE 1948

JOHN WEST SURVEYING COMPANY

412 N. DAL PASO
 HOBBS, N.M. 88240
 (505) 393-3117



LOCATION VERIFICATION MAP



SCALE: 1" = 2000'

CONTOUR INTERVAL
LOVINGTON SW, N

SEC. 25 TWP. 17-S RGE. 35-E

SURVEY N.M.P.M.

COUNTY LEA

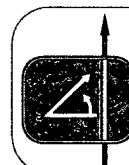
DESCRIPTION 865' FSL & 2172' FEL

ELEVATION 3893'

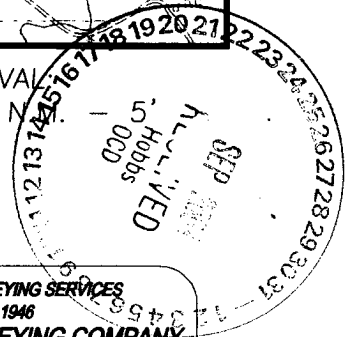
OPERATOR COMPASS OPERATING, LLC

LEASE LEE 25 STATE

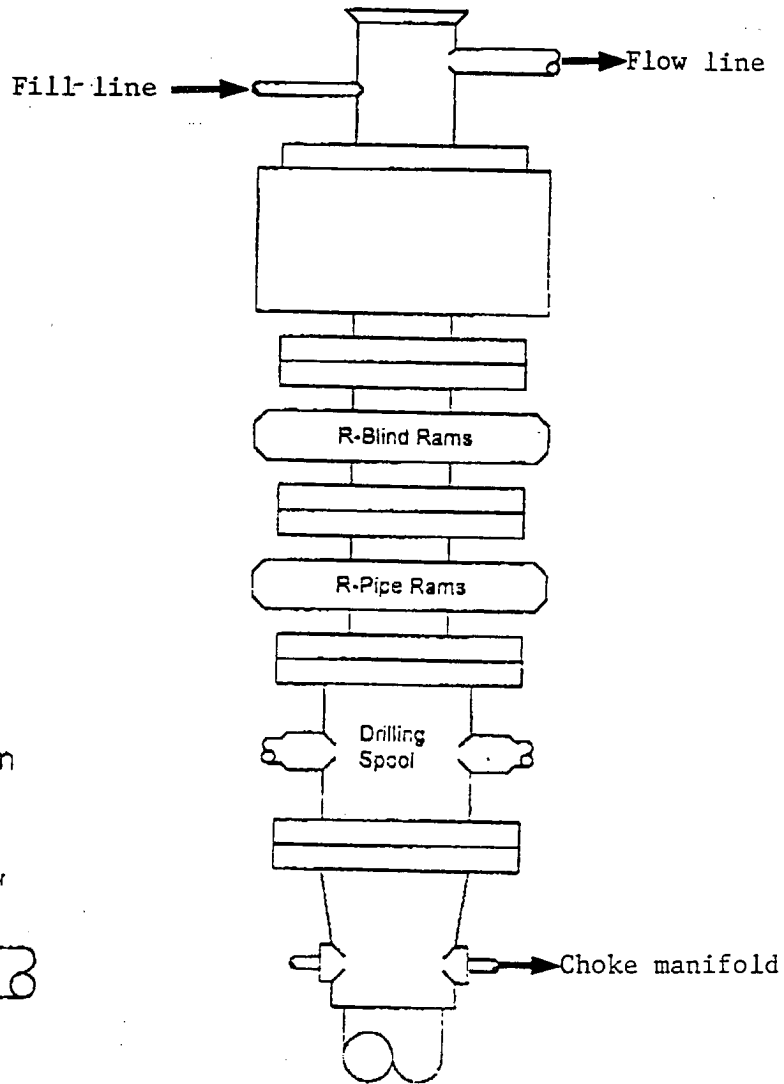
U.S.G.S. TOPOGRAPHIC MAP
LOVINGTON SW, N.M.



PROVIDING SURVEYING SERVICES
SINCE 1946
JOHN WEST SURVEYING COMPANY
412 N. DAL PASO
HOBBS, N.M. 88240
(505) 393-3117



BLOWOUT PREVENTER SYSTEM



Type 900 Series
3000 psi WP



Choke Manifold Assembly for 3M WP System

