

State of New Mexico
Energy, Minerals & Natural Resources

Form C-101
May 27, 2004

District I
1625 N. French Dr., Hobbs, NM 88240
District II
1301 W. Grand Avenue, Artesia, NM 88210
District III
1000 Rio Brazos Rd., Aztec, NM 87410
District IV
1220 S. St. Francis Dr., Santa Fe, NM 87505

Oil Conservation Division
1220 S. St. Francis Dr.
Santa Fe, NM 87505

Submit to appropriate District Office

☐ AMENDED REPORT

APPLICATION FOR PERMIT TO DRILL, RE-ENTER, DEEPEN, PLUGBACK, OR ADD A ZONE

| | | |
|---|---|---|
| ¹ Operator Name and Address MISSION RESOURCES CORPORATION 1331 LAMAR, SUITE 1455 HOUSTON, TEXAS 77010-3039 | | ² OGRID Number 148381 |
| ⁴ Property Code 33493 | ⁵ Property Name STATE A A/C 2 | ³ API Number 30-025-36936 |
| ⁹ Proposed Pool 1 JALMAT;TANSILL-YATES-7RIVERS (GAS) 79240 | | ⁶ Well No. 082 |
| ¹⁰ Proposed Pool 2 | | |

⁷Surface Location

| UL or lot no. | Section | Township | Range | Lot. Idn | Feet from the | North/South Line | Feet from the | East/West line | County |
|---------------|---------|----------|-------|----------|---------------|------------------|---------------|----------------|--------|
| J | 11 | 22S | 36E | | 1980 | SOUTH | 1980 | EAST | LEA |

⁸Proposed Bottom Hole Location If Different From Surface

| UL or lot no. | Section | Township | Range | Lot. Idn | Feet from the | North/South Line | Feet from the | East/West line | County |
|---------------|---------|----------|-------|----------|---------------|------------------|---------------|----------------|--------|
| SAME | | | | | | | | | |

Additional Well Location

| | | | | |
|---|---------------------------------------|---|--|--|
| ¹¹ Work Type Code N | ¹² Well Type Code OG | ¹³ Cable/Rotary R | ¹⁴ Lease Type Code S | ¹⁵ Ground Level Elevation 3533 |
| ¹⁶ Multiple NO | ¹⁷ Proposed Depth 4000' | ¹⁸ Formation QUEEN | ¹⁹ Contractor To be Determined | ²⁰ Spud Date DEC. 2004 |
| Depth to ground water 137' | | Distance from nearest fresh water well 1000+ | | Distance from nearest surface water 1000+ |
| Pit: Liner: Synthetic <input checked="" type="checkbox"/> 12 mils thick Clay <input checked="" type="checkbox"/> Pit Volume 5704 bbls Drilling Method: Rotary Closed-Loop System <input type="checkbox"/> Fresh Water <input checked="" type="checkbox"/> Brine <input checked="" type="checkbox"/> Diesel/Oil-based <input type="checkbox"/> Gas/Air <input type="checkbox"/> | | | | |

²¹Proposed Casing and Cement Program

| Hole Size | Casing Size | Casing weight/foot | Setting Depth | Sacks of Cement | Estimated TOC |
|-----------|-------------|--------------------|---------------|-----------------|---------------|
| 12-1/4" | 8-5/8" | 24# | 600' | 325 | SURFACE |
| 7-7/8" | 4-1/2" | 11.6# | 4000' | 655 | SURFACE |
| | | | | | |
| | | | | | |

²² Describe the proposed program. If this application is to DEEPEN or PLUG BACK, give the data on the present productive zone and proposed new productive zone. Describe the blowout prevention program, if any. Use additional sheets if necessary.

Please see Attached:

Well Location & Acreage Dedication Plat (C-102)
Proposed Well Plan
Casing/Cementing Program

Permit Expires 1 Year From Approval
Date Unless Drilling Unlawful

²³ I hereby certify that the information given above is true and complete to the best of my knowledge and belief. I further certify that the drilling pit will be constructed according to NMOCD guidelines ☐ a general permit ☒, or an (attached) alternative OCD-approved plan ☐
Signature: *Nancy K. Gatti*

Printed name: Nancy K. Gatti

Title: Regulatory Coordinator

E-mail Address: nancy.gatti@mrccorp.com

Date: 11/04/04

Phone: 713-495-3128

OIL CONSERVATION DIVISION

Approved by:

Title: PETROLEUM ENGINEER

Approval Date: NOV 10 2004

Expiration Date:

Conditions of Approval:

Attached ☐

DISTRICT I
P.O. Box 1980, Hobbs, NM 88241-1980

State of New Mexico
Energy, Minerals and Natural Resources Department

Form C-102
Revised February 10, 1984
Submit to Appropriate District Office
State Lease - 4 Copies
Fee Lease - 3 Copies

DISTRICT II
P.O. Drawer DD, Artesia, NM 88211-0719

DISTRICT III
1000 Rio Brazos Rd., Aztec, NM 87410

OIL CONSERVATION DIVISION
P.O. Box 2088
Santa Fe, New Mexico 87504-2088

DISTRICT IV
P.O. BOX 2088, SANTA FE, N.M. 87504-2088

☐ AMENDED REPORT

WELL LOCATION AND ACREAGE DEDICATION PLAT

| | | |
|----------------------------|--|--|
| API Number 30-025-36936 | Pool Code 79240 | Pool Name JALMAT:TANSILL-YATES-7RIVERS(GAS) |
| Property Code 33493 | Property Name STATE A A/C 2 | Well Number 082 |
| OGRID No. 148381 | Operator Name MISSION RESOURCES CORPORATION | Elevation 352833 |

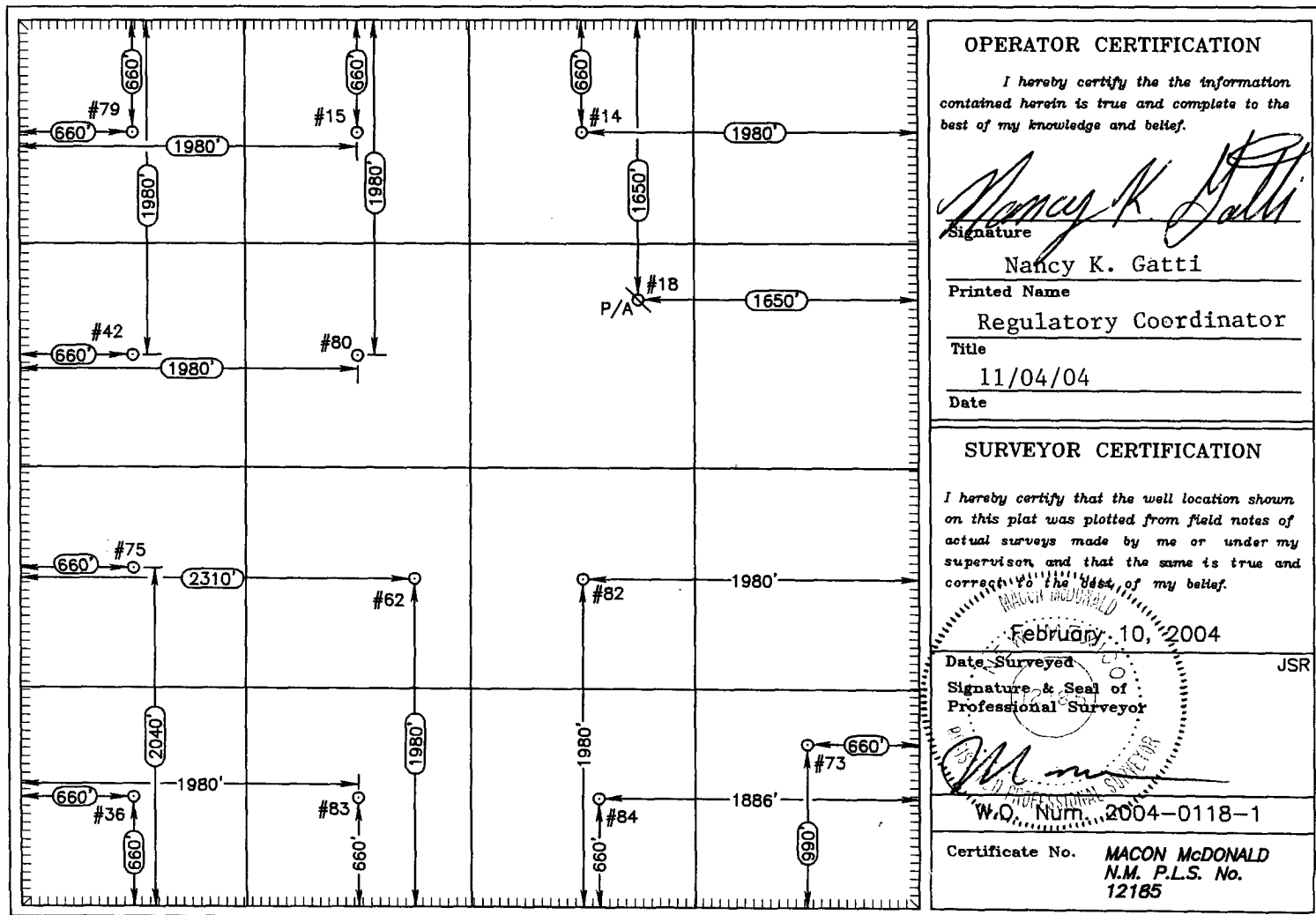
Surface Location

| UL or lot No. | Section | Township | Range | Lot Idn | Feet from the | North/South line | Feet from the | East/West line | County |
|---------------|---------|----------|-------|---------|---------------|------------------|---------------|----------------|--------|
| J | 11 | 22 S | 36 E | | 1980 | SOUTH | 1980 | EAST | LEA |

Bottom Hole Location If Different From Surface

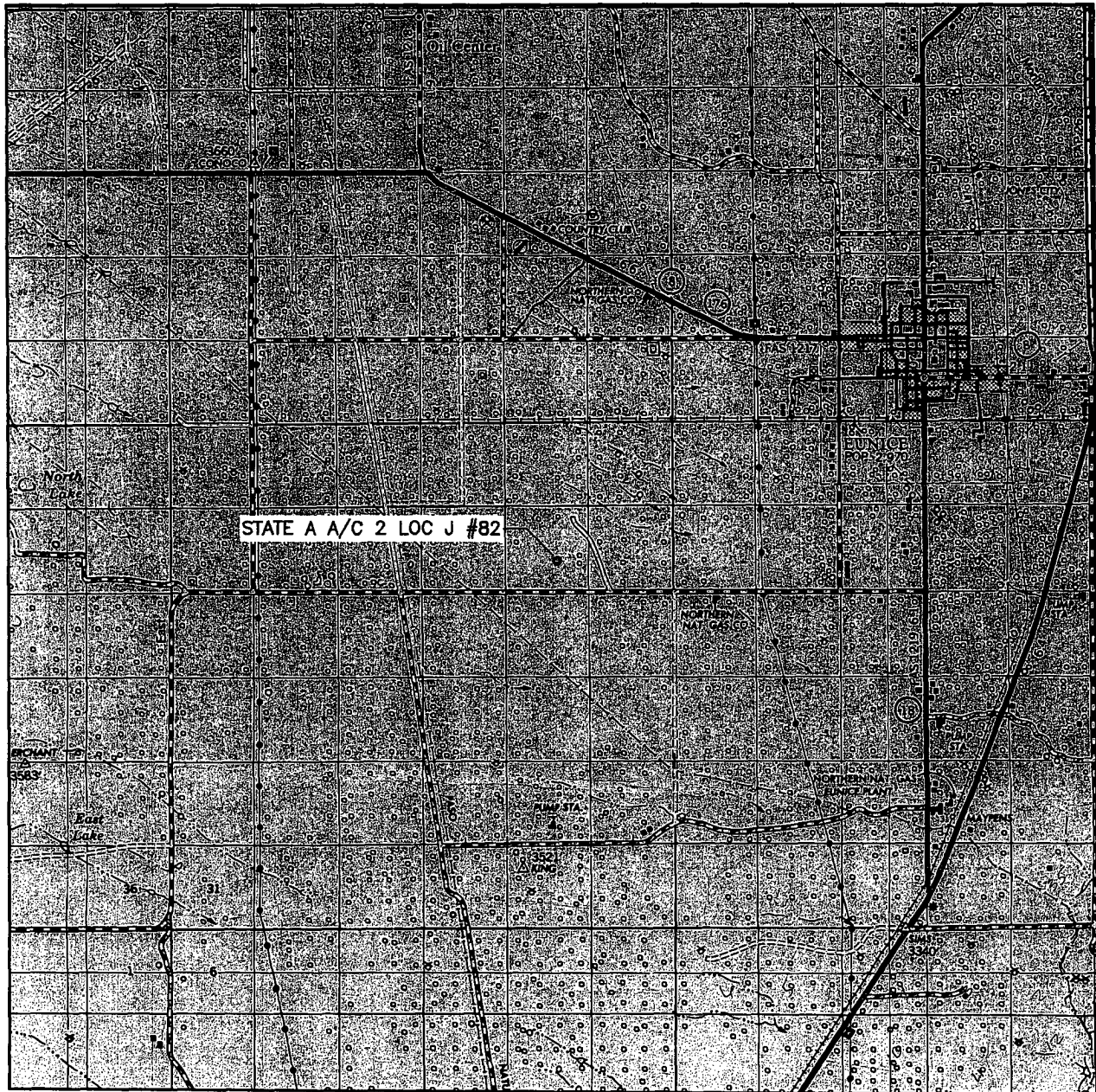
| | | | | | | | | | |
|------------------------|-----------------|--------------------|----------------------------------|---------|---------------|------------------|---------------|----------------|--------|
| UL or lot No. Same | Section | Township | Range | Lot Idn | Feet from the | North/South line | Feet from the | East/West line | County |
| Dedicated Acres 640 | Joint or Infill | Consolidation Code | Order No. R-6483-C & R-8575-C | | | | | | |

NO ALLOWABLE WILL BE ASSIGNED TO THIS COMPLETION UNTIL ALL INTERESTS HAVE BEEN CONSOLIDATED
OR A NON-STANDARD UNIT HAS BEEN APPROVED BY THE DIVISION



NOTE: THE #82, #83 & #84 WELL LOCATIONS ARE LOCATED HEREON BY ACTUAL FIELD SURVEYS
(0000) - DENOTES SECTION CALLS AS PROVIDED BY MISSION RESOURCES CORPORATION

VICINITY MAP



SCALE: 1" = 2 MILES

SEC. 11 TWP. 22-S RGE. 36-E

SURVEY N.M.P.M.

COUNTY LEA

DESCRIPTION 1980' FSL & 1980' FEL

ELEVATION 3533'

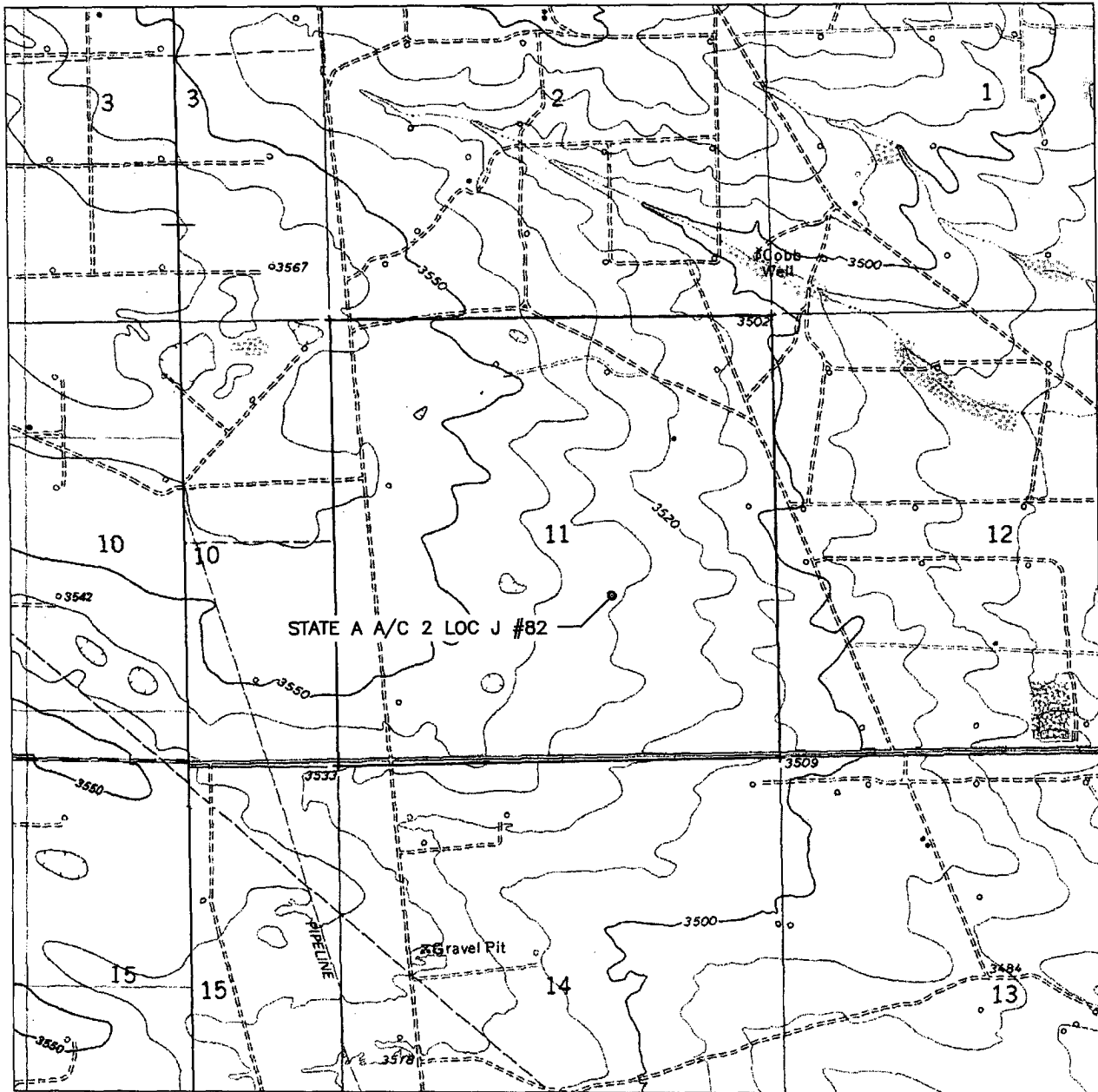
OPERATOR MISSION RESOURCES CORPORATION

LEASE STATE A A/C 2 LOC J

WEST COMPANY
of Midland, Inc.

110 W. LOUISIANA, STE. 110
MIDLAND TEXAS, 79701
(432) 687-0865 - (432) 687-0868 FAX

LOCATION VERIFICATION MAP



SCALE: 1" = 2000'

CONTOUR INTERVAL = 10'

SEC. 11 TWP. 22-S RGE. 36-E

SURVEY N.M.P.M.

COUNTY LEA

DESCRIPTION 1980' FSL & 1980' FEL

ELEVATION 3533'

OPERATOR MISSION RESOURCES CORPORATION

LEASE STATE A A/C 2 LOC J

U.S.G.S. TOPOGRAPHIC MAP
EUNICE, N.M.



WEST COMPANY
of Midland, Inc.

110 W. LOUISIANA, STE. 110
MIDLAND TEXAS, 79701
(432) 687-0865 - (432) 687-0868 FAX

**STATE A A/C 2, WELL NO. 82
1980' FSL & 1980' FEL, SECTION 11, T-22S-R36E, UNIT LETTER "J"
LEA COUNTY, NM**

PROPOSED WELL PLAN

1. Drill 12-1/4" hole from surface to 600'.
2. Run 8-5/8" 24# casing to 600', cement w/ 240 sx cement with additives to surface.
3. Drill 7-7/8" hole to 4000'
4. Run 4-1/2" 11.6# casing to 4000' w/ 655 sx cement with additives to surface.
5. Perforate Yates/7-Rivers from 3000' to 3500'
6. Acid and Frac treatment will be determined after looking at the logs.
7. Complete and put on production.

CASING PROGRAM:

SURFACE: 8-5/8" Casing in 12-1/4" Hole at 600'.

PRODUCTION: 4-1/2" casing in 7-7/8" Hole at 4000'.

CEMENTING PROGRAM:

SURFACE:

Lead: 125 sacks Class C Mixed at 12.7 ppg
Additives: 0.25 pps Cello-Flake + 6% Bentonite

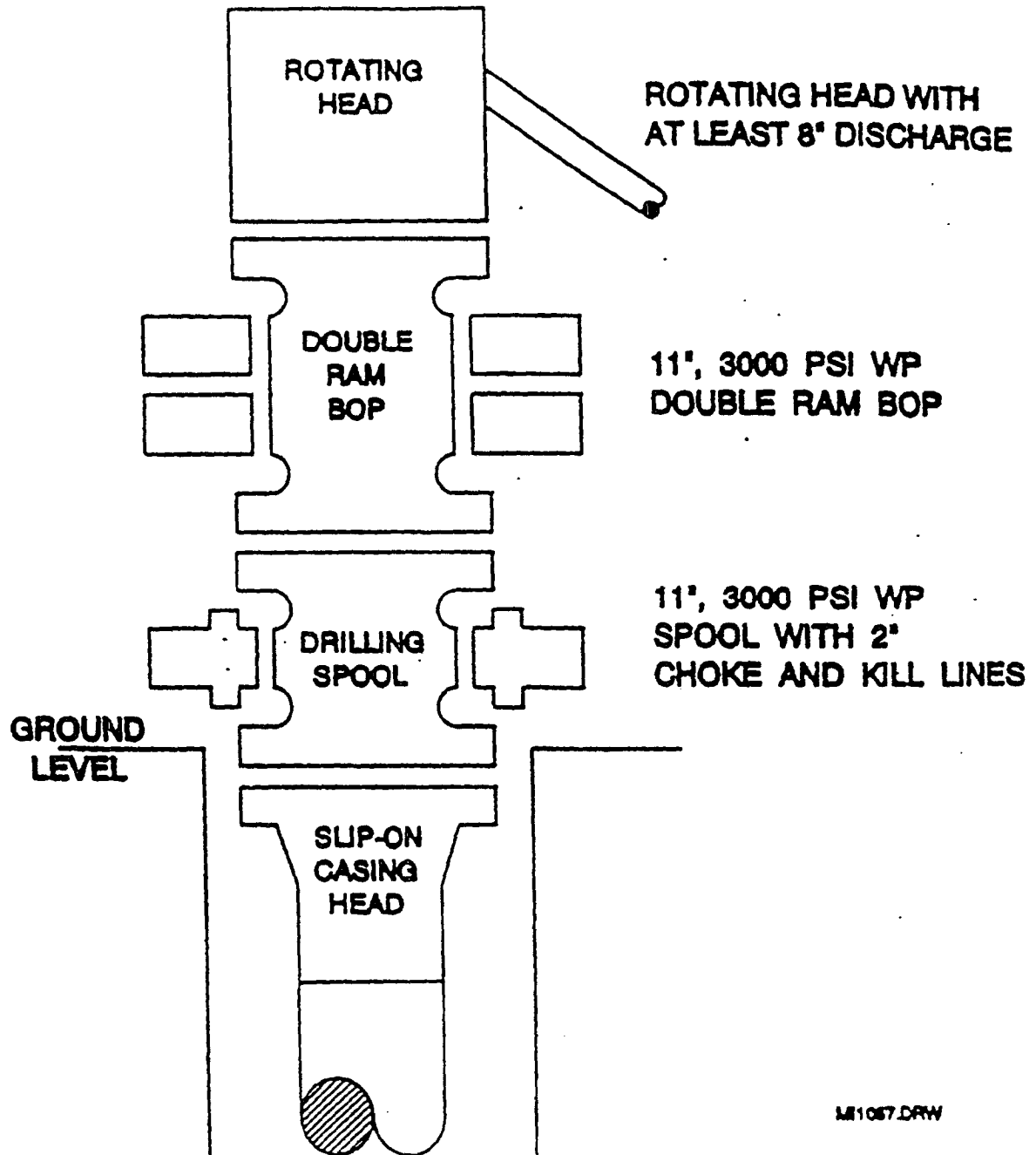
Tail: 200 sacks Class C Mixed at 14.8 ppg
Additives: 2% CACL2

PRODUCTION:

Lead: 320 sacks Class C Mixed at 11.9 ppg
Additives: 35:65 Poz (Fly Ash) + 6% Bentointe

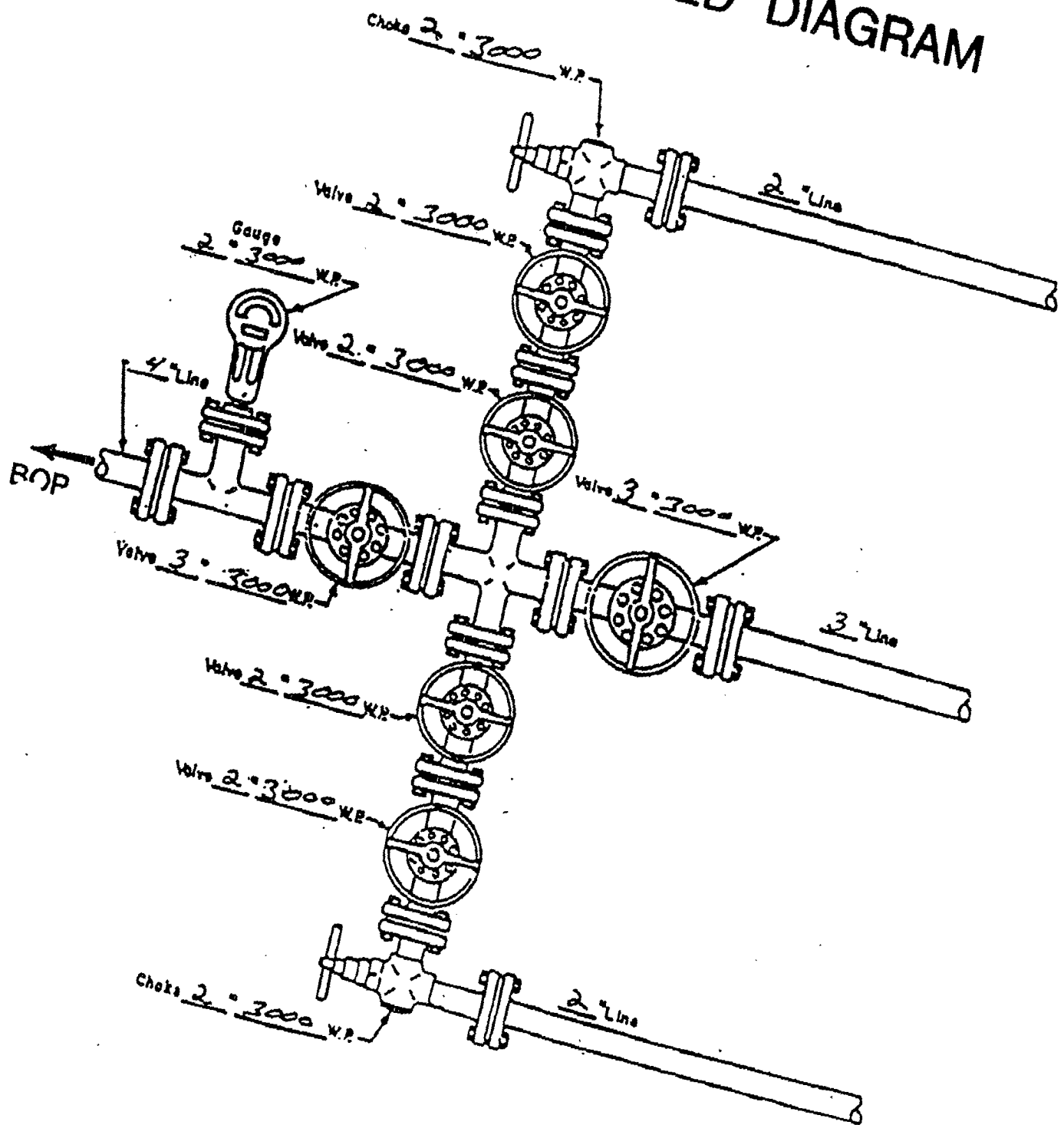
Tail: 335 sacks Class C Mixed at 14.0 ppg
Additives: 50:50 Poz (Fly Ash) + 2% Gel

BOP SPECIFICATIONS



ME1067.DRW

CHOKE MANIFOLD DIAGRAM



MANIFOLD
3000 W.P.

- ☒ Manual
- ☐ Hydraulic