

DISTRICT I  
P.O. Box 1980, Hobbs, NM 88241-1980

DISTRICT II  
P.O. Drawer DD, Artesia, NM 88211-0719

DISTRICT III  
1000 Rio Brazos Rd., Aztec, NM 87410

DISTRICT IV  
P.O. Box 2088, Santa Fe, N.M. 87504-2088

State of New Mexico  
Energy, Minerals and Natural Resources Department

OIL CONSERVATION DIVISION

P.O. Box 2088  
Santa Fe, New Mexico 87504-2088

Form C-102  
Revised February 10, 1994  
Submit to Appropriate District Office  
State Lease - 4 Copies  
Fee Lease - 3 Copies

WELL LOCATION AND ACREAGE DEDICATION PLAT

☐ AMENDED REPORT

API Number 30-025-36445	Pool Code 47400	Pool Name Nadine Paddock-Blinebry, West
Property Code 27938	Property Name BYERS "B"	Well Number 7
OGRID No. 192463	Operator Name Oxy U.S.A. W.T.P., LP	Elevation 3562'

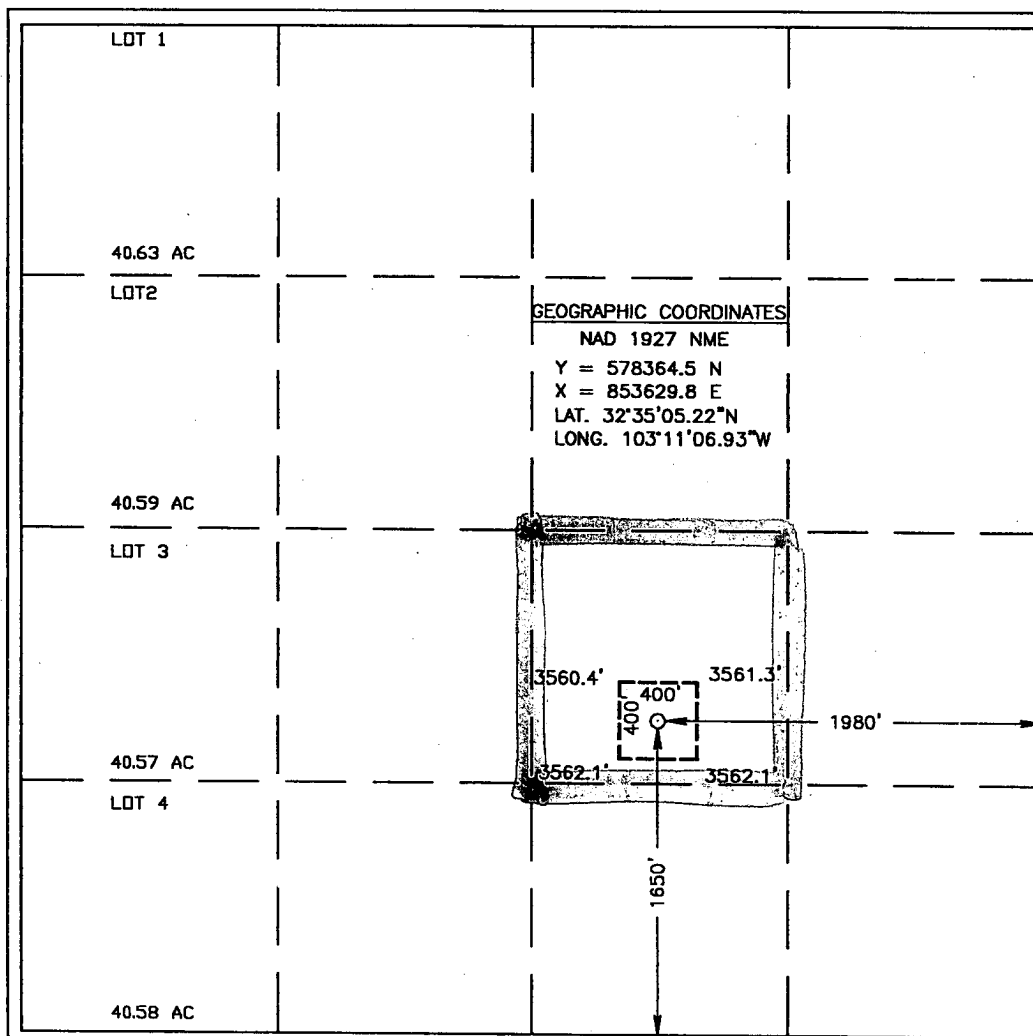
Surface Location

UL or lot No. J	Section 7	Township 20-S	Range 38-E	Lot Idn	Feet from the 1650'	North/South line SOUTH	Feet from the 1980'	East/West line EAST	County LEA
--------------------	--------------	------------------	---------------	---------	------------------------	---------------------------	------------------------	------------------------	---------------

Bottom Hole Location If Different From Surface

UL or lot No.	Section	Township	Range	Lot Idn	Feet from the	North/South line	Feet from the	East/West line	County
Dedicated Acres 40	Joint or Infill N	Consolidation Code	Order No.						

NO ALLOWABLE WILL BE ASSIGNED TO THIS COMPLETION UNTIL ALL INTERESTS HAVE BEEN CONSOLIDATED  
OR A NON-STANDARD UNIT HAS BEEN APPROVED BY THE DIVISION



OPERATOR CERTIFICATION

I hereby certify the the information  
contained herein is true and complete to the  
best of my knowledge and belief.

*David Stewart*  
Signature

David Stewart

Printed Name

Sr. Regulatory Analyst

Title

Date

SURVEYOR CERTIFICATION

I hereby certify that the well location shown  
on this plat was plotted from field notes of  
actual surveys made by me or under my  
supervision, and that the same is true and  
correct to the best of my belief.

September 17, 2003

Date Surveyed

Signature & Seal of  
Professional Surveyor

*Ronald J. Edson*  
RONALD J. EDSON  
03.11.1021

Certificate No. RONALD J. EDSON 3239  
GARY EDSON 12641

## DISTRICT I

P.O. Box 1980, Hobbs, NM 88241-1980

## DISTRICT II

P.O. Drawer DD, Artesia, NM 88211-0710

## DISTRICT III

1000 Rio Brazos Rd., Artesia, NM 87410

## DISTRICT IV

P.O. BOX 2088, SANTA FE, N.M. 87504-2088

## State of New Mexico

Energy, Minerals and Natural Resources Department

## OIL CONSERVATION DIVISION

P.O. Box 2088

Santa Fe, New Mexico 87504-2088

Form C-102

Revised February 10, 1994

Submit to Appropriate District Office

State Lease - 4 Copies

Fee Lease - 3 Copies

## WELL LOCATION AND ACREAGE DEDICATION PLAT

☐ AMENDED REPORT

API Number <b>30-025-36445</b>	Pool Code <b>47090</b>	Pool Name <b>Monument Tubb</b>
Property Code <b>27938</b>	Property Name <b>BYERS "B"</b>	Well Number <b>7</b>
UGRID No. <b>192463</b>	Operator Name <b>Oxy U.S.A. W.T.P., LP</b>	Elevation <b>3562'</b>

## Surface Location

UL or lot No. <b>J</b>	Section <b>7</b>	Township <b>20-S</b>	Range <b>38-E</b>	Lot Idn	Feet from the <b>1650'</b>	North/South line <b>SOUTH</b>	Feet from the <b>1980'</b>	East/West line <b>EAST</b>	County <b>LEA</b>
---------------------------	---------------------	-------------------------	----------------------	---------	-------------------------------	----------------------------------	-------------------------------	-------------------------------	----------------------

## Bottom Hole Location If Different From Surface

UL or lot No.	Section	Township	Range	Lot Idn	Feet from the	North/South line	Feet from the	East/West line	County
Dedicated Acres <b>80</b>	Joint or Infill <b>Y</b>	Consolidation Code	Order No.						

NO ALLOWABLE WILL BE ASSIGNED TO THIS COMPLETION UNTIL ALL INTERESTS HAVE BEEN CONSOLIDATED  
OR A NON-STANDARD UNIT HAS BEEN APPROVED BY THE DIVISION

LOT 1					
40.63 AC					
LOT 2					
40.59 AC					
LOT 3					
40.57 AC					
LOT 4					
40.58 AC					

GEOGRAPHIC COORDINATES  
NAD 1927 NME  
Y = 578364.5 N  
X = 853628.8 E  
LAT. 32°35'05.22"N  
LONG. 103°11'06.93"W

3560.4' 3561.3' 1980' 3562.1' 3562.1'

400' 400'

1850'

**OPERATOR CERTIFICATION**

I hereby certify that the information contained herein is true and complete to the best of my knowledge and belief.

*David Stewart*  
Signature  
Printed Name  
Sr. Reg. Analyst  
Title  
12/3/04  
Date

**SURVEYOR CERTIFICATION**

I hereby certify that the well location shown on this plat was plotted from field notes of actual surveys made by me or under my supervision, and that the same is true and correct to the best of my belief.

September 17, 2003  
Date Surveyed  
AWB  
Signature  
Professional Surveyor  
NEW MEXICO  
03.11.1021  
Certification No. RONALD J. EIDSON 3239  
GARY EIDSON 12641

DISTRICT I  
P.O. Box 1980, Hobbs, NM 88241-1980

DISTRICT II  
P.O. Drawer DD, Artesia, NM 88211-0719

DISTRICT III  
1000 Rio Brazos Rd., Aztec, NM 87410

DISTRICT IV  
P.O. BOX 2088, SANTA FE, N.M. 87504-2088

State of New Mexico  
Energy, Minerals and Natural Resources Department

OIL CONSERVATION DIVISION  
P.O. Box 2088  
Santa Fe, New Mexico 87504-2088

Form C-102  
Revised February 10, 1994  
Submit to Appropriate District Office  
State Lease - 4 Copies  
Fee Lease - 3 Copies

WELL LOCATION AND ACREAGE DEDICATION PLAT

☐ AMENDED REPORT

API Number 30-025-36445	Pool Code 47505	Pool Name Nadine Drinkard, West
Property Code 27938	Property Name BYERS "B"	Well Number 7
OGRID No. 192463	Operator Name Oxy U.S.A. W.T.P., LP	Elevation 3562'

Surface Location

UL or lot No. J	Section 7	Township 20-S	Range 38-E	Lot Idn	Feet from the 1650'	North/South line SOUTH	Feet from the 1980'	East/West line EAST	County LEA
--------------------	--------------	------------------	---------------	---------	------------------------	---------------------------	------------------------	------------------------	---------------

Bottom Hole Location If Different From Surface

UL or lot No.	Section	Township	Range	Lot Idn	Feet from the	North/South line	Feet from the	East/West line	County
Dedicated Acres 40	Joint or Infill N	Consolidation Code	Order No.						

NO ALLOWABLE WILL BE ASSIGNED TO THIS COMPLETION UNTIL ALL INTERESTS HAVE BEEN CONSOLIDATED  
OR A NON-STANDARD UNIT HAS BEEN APPROVED BY THE DIVISION

LOT 1									
40.63 AC									
LOT 2									
40.59 AC									
LOT 3									
40.57 AC									
LOT 4									
40.58 AC									

GEOGRAPHIC COORDINATES  
NAD 1927 NME  
Y = 578364.5 N  
X = 853629.8 E  
LAT. 32°35'05.22"N  
LONG. 103°11'06.93"W

3560.4' 3561.3' 1980' 3562.1' 3562.1' 400' 400' 1650'

OPERATOR CERTIFICATION

I hereby certify that the information contained herein is true and complete to the best of my knowledge and belief.

Signature

David Stewart

Printed Name

Sr. Regulatory Analyst

Title

9/21/01

Date

SURVEYOR CERTIFICATION

I hereby certify that the well location shown on this plat was plotted from field notes of actual surveys made by me or under my supervision, and that the same is true and correct to the best of my belief.

September 17, 2003

Date Surveyed

AWB

Signature & Seal of Professional Surveyor

Certificate No. RONALD J. KIDSON 3239  
GARY KIDSON 12641

DISTRICT I  
P.O. Box 1980, Hobbs, NM 88241-1980

DISTRICT II  
P.O. Drawer 80, Artesia, NM 88211-0719

DISTRICT III  
1000 Rio Brazos Rd., Aztec, NM 87410

DISTRICT IV  
P.O. Box 2088, Santa Fe, N.M. 87504-2088

State of New Mexico  
Energy, Minerals and Natural Resources Department

OIL CONSERVATION DIVISION  
P.O. Box 2088  
Santa Fe, New Mexico 87504-2088

Form C-102  
Revised February 10, 1994  
Submit to Appropriate District Office  
State Lease - 4 Copies  
Fee Lease - 3 Copies

WELL LOCATION AND ACREAGE DEDICATION PLAT

☐ AMENDED REPORT

API Number 30-025-36445	Pool Code 56630	Pool Name Skaggs Abo, East
Property Code 27938	Property Name BYERS "B"	Well Number 7
GRID No. 192463	Operator Name Oxy U.S.A. W.T.P., LP	Elevation 3562'

Surface Location

UL or lot No.	Section	Township	Range	Lot Idn	Feet from the	North/South line	Feet from the	East/West line	County
J	7	20-S	38-E		1650'	SOUTH	1980'	EAST	LEA

Bottom Hole Location If Different From Surface

UL or lot No.	Section	Township	Range	Lot Idn	Feet from the	North/South line	Feet from the	East/West line	County
Dedicated Acres 40	Joint or Infill N	Consolidation Code	Order No.						

NO ALLOWABLE WILL BE ASSIGNED TO THIS COMPLETION UNTIL ALL INTERESTS HAVE BEEN CONSOLIDATED  
OR A NON-STANDARD UNIT HAS BEEN APPROVED BY THE DIVISION

LOT 1									
40.63 AC									
LOT 2									
40.59 AC									
LOT 3									
40.57 AC									
LOT 4									
40.58 AC									

GEOGRAPHIC COORDINATES  
NAD 1927 NME  
Y = 578364.5 N  
X = 853629.8 E  
LAT. 32°35'05.22"N  
LONG. 103°11'06.93"W

WMU 202

3560.4' 3561.3' 3562.1' 3562.1' 330' 1650' 1980'

OPERATOR CERTIFICATION

I hereby certify the the information contained herein is true and complete to the best of my knowledge and belief.

Signature  
David Stewart  
Printed Name  
Sr. Regulatory Analyst  
Title  
Date 10/2/03

SURVEYOR CERTIFICATION

I hereby certify that the well location shown on this plat was plotted from field notes of actual surveys made by me or under my supervision, and that the same is true and correct to the best of my belief.

September 17, 2003

Date Surveyed  
Signature & Seal of Professional Surveyor  
Certificate No. RONALD J. KIDSON 3239  
GARY KIDSON 12641