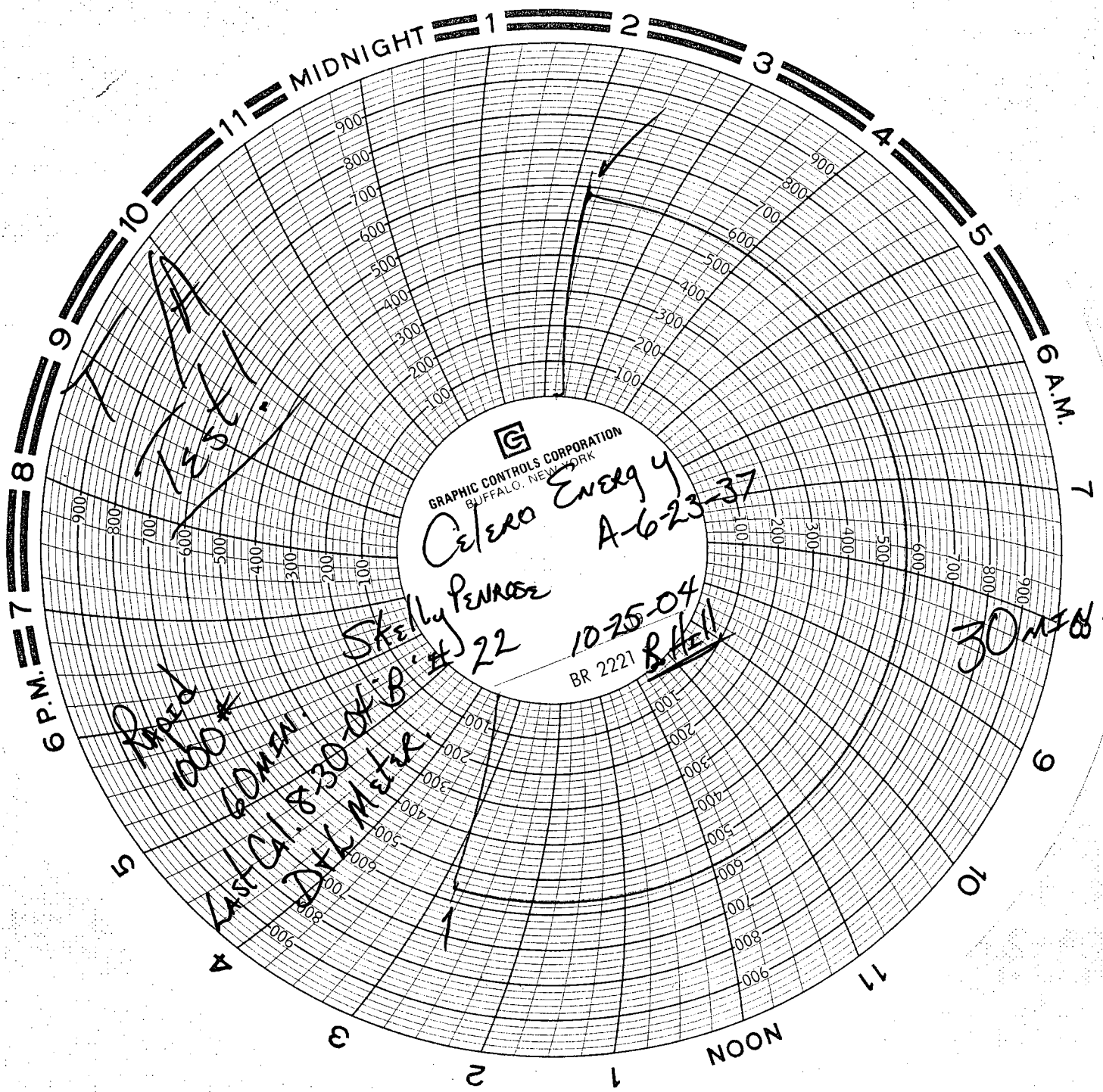


Conditions of Approval (if any):



GRAPHIC CONTROLS CORPORATION  
BUFFALO, NEW YORK

Celer Energy  
A-623-37

Skelly Penrose  
#22

10-25-04  
BR 2221 B.Hell

30 min.

Rapid 1000  
60 min.  
Last Cal. 8-30-04 B.Hell  
DLK Meter