

New Mexico Oil Conservation  
1625 N. French Drive  
Hobbs, NM 88240  
UNITED STATES  
DEPARTMENT OF THE INTERIOR  
BUREAU OF LAND MANAGEMENT

BLM-Ruswell

0  
OMB No. 1004-0136  
Expires November 30, 2000

APPLICATION FOR PERMIT TO DRILL OR REENTER

1a. Type of Work: <input checked="" type="checkbox"/> DRILL <input type="checkbox"/> REENTER		5. Lease Serial No. <b>NM-90</b>
b. Type of Well: <input checked="" type="checkbox"/> Oil Well <input type="checkbox"/> Gas Well <input type="checkbox"/> Other <input type="checkbox"/> Single Zone <input checked="" type="checkbox"/> Multiple Zone		6. If Indian, Allottee or Tribe Name <b>Not Applicable</b>
2. Name of Operator <b>Yates Petroleum Corporation 25575</b>		7. If Unit or CA Agreement, Name and No. <b>Not Applicable</b>
3A. Address <b>105 South Fourth Street Artesia, New Mexico 88210</b>	3b. Phone No. (include area code) <b>(505) 748-1471</b>	8. Lease Name and Well No. #2 <b>Amazing BAZ Federal 30801</b>
4. Location of Well (Report location clearly and in accordance with any State requirements. *) At surface <b>600' FNL and 1980' FWL, Unit letter C</b> ✓ At proposed prod. Zone <b>same as above</b>		9. API Well No. <b>30-025-37011</b>
14. Distance in miles and direction from nearest town or post office* <b>Approximately thirty-five (35) miles northeast Loving, New Mexico</b>		10. Field and Pool, or Exploratory <b>39366 East Livingston Ridge, Delaware ENS</b>
15. Distance from proposed* location to nearest property or lease line, ft. (Also to nearest drig. unit line, if any) <b>600'</b>	16. No. of Acres in lease <b>1760</b>	11. Sec., T., R., M., or Blk. and Survey or Area <b>Section 21, T22S-R32E</b>
17. Spacing Unit dedicated to this well <b>40</b>		12. County or Parish <b>Lea</b>
19. Proposed Depth <b>8900'</b>		13. State <b>NM</b>
20. BLM/BIA Bond No. on file <b>NM-2811</b>		
21. Elevations (Show whether DF, KDB, RT, GL, etc.) <b>3702' GL</b>	22. Approximate date work will start* <b>ASAP</b>	23. Estimated duration <b>30 Days</b>
24. Attachments <b>Carlsbad Controlled Water Basin</b>		

The following, completed in accordance with the requirements of Onshore Oil and Gas Order No. 1, shall be attached to this form:

- |   |   |
|---|---|
| 1. Well plat certified by a registered surveyor.  | 4. Bond to cover the operations unless covered by an existing bond on file (see Item 20 above).   |
| 2. A Drilling Plan.   | 5. Operator certification.  |
| 3. A Surface Use Plan (if the location is on National Forest System Lands, the SUPO shall be filed with the appropriate Forest Service Office). | 6. Such other site specific information and/or plans as may be required by the authorized office. |

25. Signature <b>Clifton R. May</b>	Name (Printed/Typed) <b>Clifton R. May</b>	Date <b>10/12/04</b>
Title: <b>Regulatory Agent/Land Department</b>		
Approved by (Signature) <b>Russ Sorenson</b>	Name (Printed/Typed) <b>Russ Sorenson</b>	Date <b>7 DEC 2004</b>
Title: <b>ACTING FIELD MANAGER</b>		Office <b>CARLSBAD FIELD OFFICE</b>

Application approval does not warrant or certify that the applicant holds legal or equitable title to those rights in the subject lease which would entitle the applicant to conduct operations thereon.

Conditions of approval, if any, are attached.

APPROVAL FOR 1 YEAR

Title 18 U.S.C. Section 1001 and Title 43 U.S.C. Section 1212, make it a crime for any person knowingly and willfully to make to any department or agency of the United States any false, fictitious or fraudulent statements or representations as to any matter within its jurisdiction.

\*(Instructions on reverse)

APPROVAL SUBJECT TO  
GENERAL REQUIREMENTS AND  
SPECIAL STIPULATIONS  
ATTACHED

Previously Approved

KZ

**District I**

1625 N. French Dr., Hobbs, NM 88240

**District II**

811 South First, Artesia, NM 88210

**District III**

1000 Rio Brazos Rd., Aztec, NM 87410

**District IV**

1220 S. St. Francis Dr., Santa Fe, NM 87505

State of New Mexico

Energy, Minerals &amp; Natural Resources Department

Form C-102

Revised August 15, 2000

**OIL CONSERVATION DIVISION**

1220 South St. Francis Dr.

Santa Fe, NM 87505

Submit to Appropriate District Office

State Lease - 4 Copies

Fee Lease - 3 Copies

☐ AMENDED REPORT**WELL LOCATION AND ACREAGE DEDICATION PLAT**

<sup>1</sup> API Number <b>30-025-37011</b>		<sup>2</sup> Pool Code <b>39366</b>		<sup>3</sup> Pool Name <b>East Livingston Ridge Delaware</b>	
<sup>4</sup> Property Code <b>30801</b>		<sup>5</sup> Property Name <b>Amazing BAZ Federal</b>			<sup>6</sup> Well Number <b>2</b>
<sup>7</sup> OGRID No. <b>025575</b>		<sup>8</sup> Operator Name <b>Yates Petroleum Corporation</b>			<sup>9</sup> Elevation <b>3702'</b>

<sup>10</sup> Surface Location

UL or lot no. <b>C</b>	Section <b>21</b>	Township <b>22S</b>	Range <b>32E</b>	Lot Idn	Feet from the <b>600</b>	North/South line <b>North</b>	Feet from the <b>1980</b>	East/West line <b>West</b>	County <b>Lea</b>
---------------------------	----------------------	------------------------	---------------------	---------	-----------------------------	----------------------------------	------------------------------	-------------------------------	----------------------

<sup>11</sup> Bottom Hole Location If Different From Surface

UL or lot no.	Section	Township	Range	Lot Idn	Feet from the	North/South line	Feet from the	East/West line	County
---------------	---------	----------	-------	---------	---------------	------------------	---------------	----------------	--------

<sup>12</sup> Dedicated Acres <b>40</b>	<sup>13</sup> Joint or Infill	<sup>14</sup> Consolidation Code	<sup>15</sup> Order No.
--	-------------------------------	----------------------------------	-------------------------

NO ALLOWABLE WILL BE ASSIGNED TO THIS COMPLETION UNTIL ALL INTERESTS HAVE BEEN CONSOLIDATED OR A NON-STANDARD UNIT HAS BEEN APPROVED BY THE DIVISION

<sup>16</sup>	<sup>17</sup> <b>OPERATOR CERTIFICATION</b> I hereby certify that the information contained herein is true and complete to the best of my knowledge and belief. <i>Cliffon R. May</i> Signature <b>Cliffon R. May</b> Printed Name <b>Regulatory Agent</b> Title <b>10/12/2004</b> Date	
	<sup>18</sup> <b>SURVEYOR CERTIFICATION</b> I hereby certify that the well location shown on this plat was plotted from field notes of actual surveys made by me or under my supervision, and that the same is true and correct to the best of my belief. <b>REFER TO ORIGINAL PLAT</b> Date of Survey Signature and Seal of Professional Surveyor:	
	Certificate Number	

**DISTRICT II**

811 South First, Artesia, NM 88210

**DISTRICT III**

1000 Rio Brazos Rd., Aztec, NM 87410

**DISTRICT IV**

2040 South Pacheco, Santa Fe, NM 87505

**OIL CONSERVATION DIVISION**

P.O. Box 2088

Santa Fe, New Mexico 87504-2088

Submit to Appropriate District Office

State Lease - 4 Copies

Fee Lease - 3 Copies

☐ AMENDED REPORT**WELL LOCATION AND ACREAGE DEDICATION PLAT**

API Number	Pool Code	Pool Name East Livingston Ridge Delaware
Property Code	Property Name AMAZING "BAZ" FEDERAL	Well Number 2
OGRID No. 025575	Operator Name YATES PETROLEUM CORPORATION	Elevation 3702

**Surface Location**

UL or lot No.	Section	Township	Range	Lot Idn	Feet from the	North/South line	Feet from the	East/West line	County
C	21	22S	32E		600	NORTH	1980	WEST	LEA

**Bottom Hole Location If Different From Surface**

UL or lot No.	Section	Township	Range	Lot Idn	Feet from the	North/South line	Feet from the	East/West line	County

Dedicated Acres 40	Joint or Infill	Consolidation Code	Order No.
-----------------------	-----------------	--------------------	-----------

**NO ALLOWABLE WILL BE ASSIGNED TO THIS COMPLETION UNTIL ALL INTERESTS HAVE BEEN CONSOLIDATED  
OR A NON-STANDARD UNIT HAS BEEN APPROVED BY THE DIVISION**

	<b>OPERATOR CERTIFICATION</b> I hereby certify the the information contained herein to true and complete to the best of my knowledge and belief.  <i>Clifton R. May</i> Signature Clifton R. May Printed Name Regulatory Agent Title 10/3/2002 Date		
	<b>SURVEYOR CERTIFICATION</b> I hereby certify that the well location shown on this plat was plotted from field notes of actual surveys made by me or under my supervision, and that the same is true and correct to the best of my belief.  9/26/2002 Date Surveyed Signature of Seal of Professional Surveyor Certificate No. Herschel Jones RLS 3640 PAGE 3 HERSCHEL JONES LAND SURVEYING COMPANY		

**YATES PETROLEUM CORPORATION**  
**Amazing "BAZ" Federal #2**  
**600' FNL and 1980' FWL**  
**Section 21-T22S-R32E**  
**Lea County, New Mexico**

1. The estimated tops of geologic markers are as follows:

Rustler	890'	Cherry Canyon	5690'
Top of Salt	990'	Brushy Canyon	6970'
Base of Salt	4400'	Bone Spring	8630'
Bell Canyon	4760'	TD	8900'

2. The estimated depths at which anticipated water, oil or gas formations are expected to be encountered:

Water: 250'  
Oil or Gas: 8630'

1. 3. Pressure Control Equipment: A diverter will be installed on the 13 3/8" casing. BOPE will be installed on the 8 5/8" casing and rated for 3000# BOP systems will be consistent with API RP 53. Pressure tests will be conducted before drilling out from under all casing strings, which are set and cemented in place. Blowout Preventor controls will be installed prior to drilling the surface plug and will remain in use until the well is completed or abandoned. Preventors will be inspected and operated at least daily to ensure good mechanical working order, and this inspection recorded on the daily drilling report. See Exhibit B.

**Auxiliary Equipment:**

- A. Auxiliary Equipment: Kelly cock, pit level indicators, flow sensor equipment and a sub with full opening valve to fit the drill pipe and collars will be available on the rig floor in the open position at all times for use when kelly is not in use.

4. THE PROPOSED CASING AND CEMENTING PROGRAM:

- A. Casing Program: (All New)

<u>Hole Size</u>	<u>Casing Size</u>	<u>Wt./Ft</u>	<u>Grade</u>	<u>Coupling</u>	<u>Interval</u>	<u>Length</u>
17 1/2"	13 3/8"	48#	H-40	ST&C	0-850' 9/15'	850' 9/15'
11"	8 5/8"	32#	J-55	ST&C	0-4550'	4550'
7 7/8	5 1/2"	17#	J-55	LT&C	0-100'	100'
7 7/8	5 1/2"	15.5#	J-55	LT&C	100-6800'	6700'
7 7/8	5 1/2"	17#	J-55	LT&C	6800-8900'	2100'

2. Minimum Casing Design Factors: Collapse 1.125, Burst 1.0, and Tensile Strength 1.8

A. CEMENTING PROGRAM:

Surface Casing: Lead w/250 sx Lite (YLD 1.96 WT 12.5) Tail in w/ 200 sx Class C + 2% CaCl<sub>2</sub> (YLD 1.34 WT 14.8).

Intermediate Casing: Lead w/1150 sx Lite (YLD 2.5 WT 11.9) Tail in w/250 sx C + 2% CaCl<sub>2</sub> (YLD 1.34 WT 14.8).

Production Casing: 1<sup>st</sup> Stage: Lead w/550 sx Super H (YLD 1.67 WT 13). DV tool @ 4500'. Tail in w/50sx Thixset (YLD 1.4 WT 14.4). TOC Stage 1 approx. 6200'.

2<sup>nd</sup> Stage: Lead w/350 sx Lite (YLD 2.5 WT 11.9). Tail in w/50 sx Premium (YLD 1.3 WT 14.8). Cement for Stage 2 will be circulated.

5. MUD PROGRAM AND AUXILIARY EQUIPMENT:

<u>Interval</u>	<u>Type</u>	<u>Weight</u>	<u>Viscosity</u>	<u>Fluid Loss</u>
0-850'	FW/Native Mud	8.6-9.2	28-36	N/C
850'-4550'	Brine	10.0-10.2	28	N/C
4550'-6900'	Cut Brine	8.6-9.1	28	N/C
6900'-TD	Cut Brine/Starch	8.6-9.1	28-32	<15

Sufficient mud material(s) to maintain mud properties, control lost circulation and contain a blow out will be available at the well site during drilling operations. Mud will be checked hourly by rig personnel.

6. EVALUATION PROGRAM:

Samples: Every 10' from 5000' to TD.

Logging: Platform HALS, CMR

Coring: None anticipated

DST's: As warranted.

7. ABNORMAL CONDITIONS, BOTTOM HOLE PRESSURE, AND POTENTIAL HAZARDS:

Anticipated BHP:

From: 0	TO: 850'	Anticipated Max. BHP: 400 PSI
From: 850'	TO: 4550'	Anticipated Max. BHP: 2000 PSI
From: 4550'	TO: TD	Anticipated Max. BHP: 4400 PSI

Abnormal Pressures Anticipated: None

Lost Circulation Zones Anticipated: None.

H<sub>2</sub>S Zones Anticipated: None. SEE GEO + STIPS REPORT

Maximum Bottom Hole Temperature: 140 F

8. ANTICIPATED STARTING DATE:

Plans are to drill this well as soon as possible after receiving approval. It should take approximately 15 days to drill the well with completion taking another 20 days.

**MULTI-POINT SURFACE USE AND OPERATIONS PLAN**  
**YATES PETROLEUM CORPORATION**  
**Amazing "BAZ" Federal #2**  
**600' FNL and 1980' FWL**  
**Section 21-T22S-R32E**  
**Lea County, New Mexico**

This plan is submitted with Form 3160-3, Application for Permit to Drill, covering the above described well. The purpose of this plan is to describe the location of the proposed well, the proposed construction activities and operations plan, the magnitude of the surface disturbance involved and the procedures to be followed in rehabilitating the surface after completion of the operations, so that a complete appraisal can be made of the environmental effect associated with the operations.

1. EXISTING ROADS:

Exhibit A is a portion of the BLM map showing the well and roads in the vicinity of the proposed location. The proposed well site is located approximately 35 miles northeast of Loving, New Mexico and the access route to the location is indicated in red and green on Exhibit A.

DIRECTIONS:

Take Hwy 62/180 east out of Carlsbad, NM to the Half Way Watering Hole. Continue east approx. 0.7 of a mile to Campbell Rd. (C-29). Turn south and go approx. 13.7 miles to sign for Conoco Southeast New Mexico Operating Unit, Bootleg Compressor Station. Turn east and follow road approx. 4.0 miles (main road curves south). The new access starts here and goes east approx. 0.3' of a mile to the southwest corner of pad.

2. PLANNED ACCESS ROAD:

- A. The proposed new access will be approximately 1500' in length from the point of origin to the southwest corner of the drilling pad. The road will go easterly direction.
- B. The new road will be 14 feet in width (driving surface) and will be adequately drained to control runoff and soil erosion.
- C. The new road will be bladed with drainage on both sides. One traffic turnout will be built.
- D. The route of the road is visible.

3. LOCATION OF EXISTING WELL:

- A. There is drilling activity within a one-mile radius of the well site.
- B. Exhibit D shows existing wells within a one-mile radius of the proposed well site.

4. LOCATION OF EXISTING AND/OR PROPOSED FACILITIES:

- A. There are production facilities on this lease at the present time.
- B. In the event that the well is productive, the necessary production facilities will be installed on the drilling pad. If the well is productive oil, a gas or diesel self-contained unit will be used to provide the necessary power. No power will be required if the well is productive of gas.

5. LOCATION AND TYPE OF WATER SUPPLY:

- A. It is planned to drill the proposed well with a fresh water system. The water will be obtained from commercial sources, and will be hauled to the location by truck over the existing and proposed roads shown in Exhibit A.

6. SOURCE OF CONSTRUCTION MATERIALS:

It will be the responsibility of the dirt contractor to locate a pit of his choice.

7. METHODS OF HANDLING WASTE DISPOSAL:

- A. Drill cuttings will be disposed of in the reserve pits.
- B. Drilling fluids will be allowed to evaporate in the reserve pits until the pits are dry.
- C. Water produced during operations will be collected in tanks until hauled to an approved disposal system, or separate disposal application will be submitted.
- D. Oil produced during operations will be stored in tanks until sold.
- E. Current laws and regulations pertaining to the disposal of human waste will be complied with.
- F. All trash, junk, and other waste materials will be contained in trash cages or bins to prevent scattering and will be removed and deposited in an approved sanitary landfill. Burial on site is not approved.

8. ANCILLARY FACILITIES: None required.

9. WELLSITE LAYOUT:

- A. Exhibit C shows the relative location and dimensions of the well pad, the reserve pits, the location of the drilling equipment, rig orientation and access road approach.
- B. The reserve pits will be plastic lined and constructed under Yates Petroleum Corporation approved general plan.
- C. A 400' x 400' area has been staked and flagged.

10. PLANS FOR RESTORATION:

- A. After finishing drilling and/or completion operations, all equipment and other material not needed for further operations will be removed. The location will be cleaned of all trash and junk to leave the well site in as aesthetically pleasing a condition as possible.
- B. Unguarded pits, if any, containing fluids will be fenced until they have dried and been leveled.
- C. If the proposed well is non-productive, all rehabilitation and/or vegetation requirements of the Bureau of Land Management will be complied with and will be accomplished as expeditiously as possible. All pits will be filled level after they have evaporated and dried.

11. SURFACE OWNERSHIP: Federal Surface administered by BLM.

12. OTHER INFORMATION:

- A. Topography: Refer to the existing archaeological report for a description of the topography, flora, fauna, soil characteristics, dwellings, and historical and cultural sites.
- B. The primary surface use is for grazing.

13. OPERATOR'S REPRESENTATIVE:

- |  |   |
|--|---|
| A. Through A.P.D. Approval:<br>Clifton R. May, Regulatory Agent<br>Yates Petroleum Corporation<br>105 South Fourth Street<br>Artesia, New Mexico 88210<br>Phone (505) 748-1471 | B. Through Drilling, Completions & Prod.<br>Pinson McWhorter, Operations Manager<br>Yates Petroleum Corporation<br>105 South Fourth Street<br>Artesia, New Mexico 88210<br>Phone (505) 748-1471 |
|--|---|

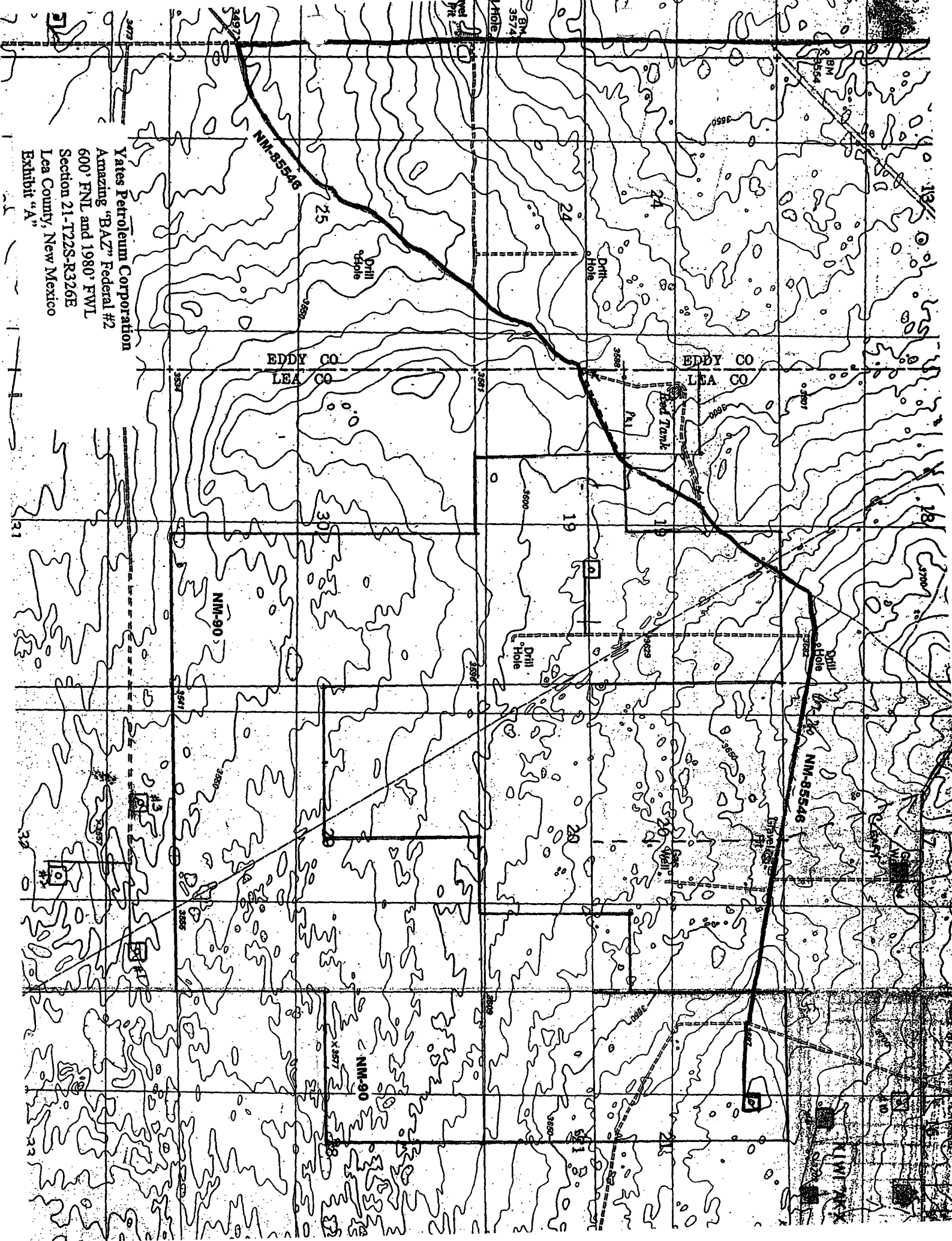
14. CERTIFICATION:

I hereby certify that I, or persons under my direct supervision, have inspected the proposed drill site and access route, that I am familiar with the conditions which presently exist; that the statements made in this plan are to the best of my knowledge, true and correct; and, that the work associated with the operations proposed herein will be performed by Yates Petroleum Corporation and its contractors and subcontractors in conformity with this plan and the terms and conditions under which it is approved. This statement is subject to the provisions of 18 U.S.C. 1001 for the filing of a false statement.

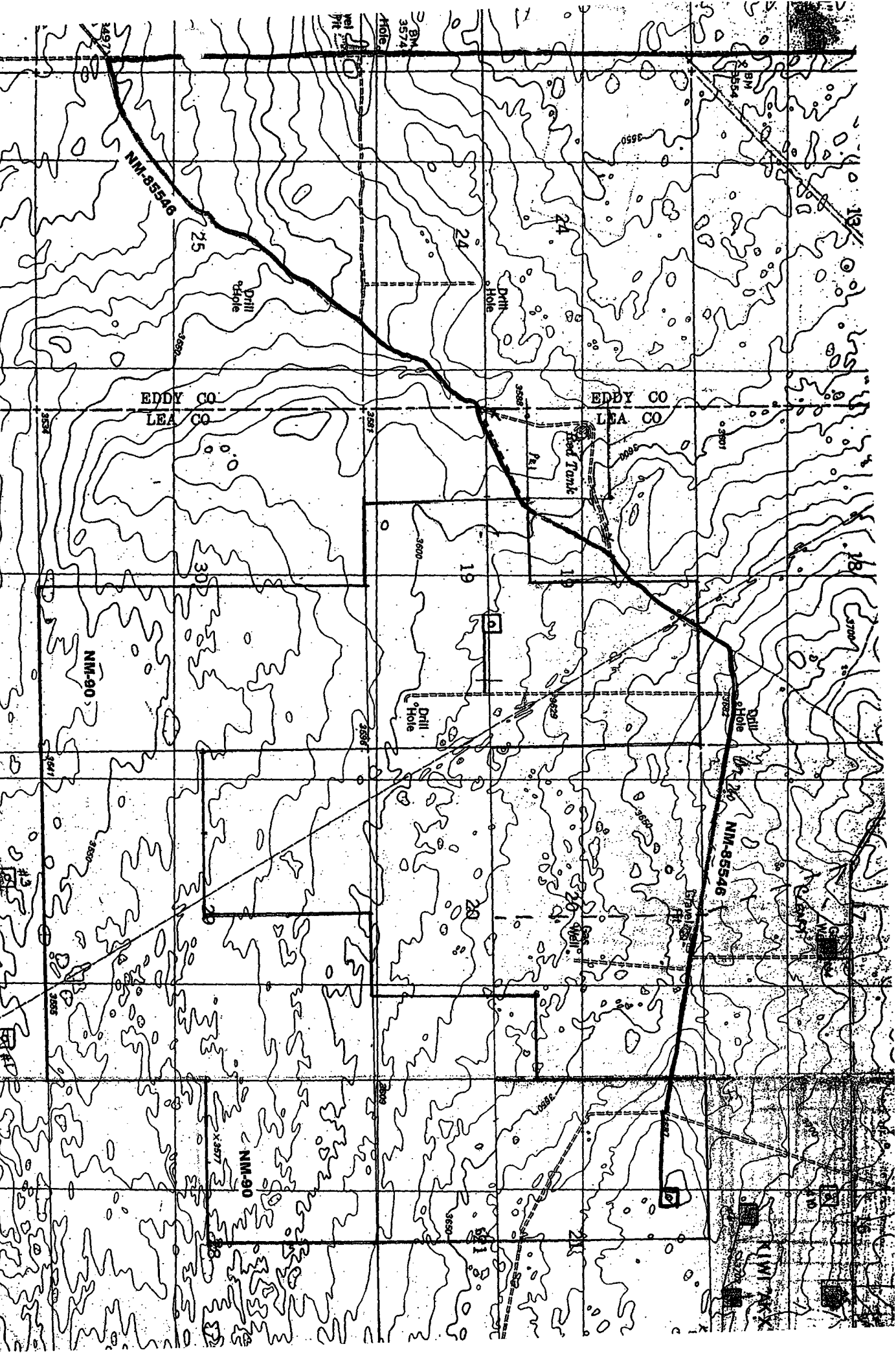
10/12/2004

  
Regulatory Agent

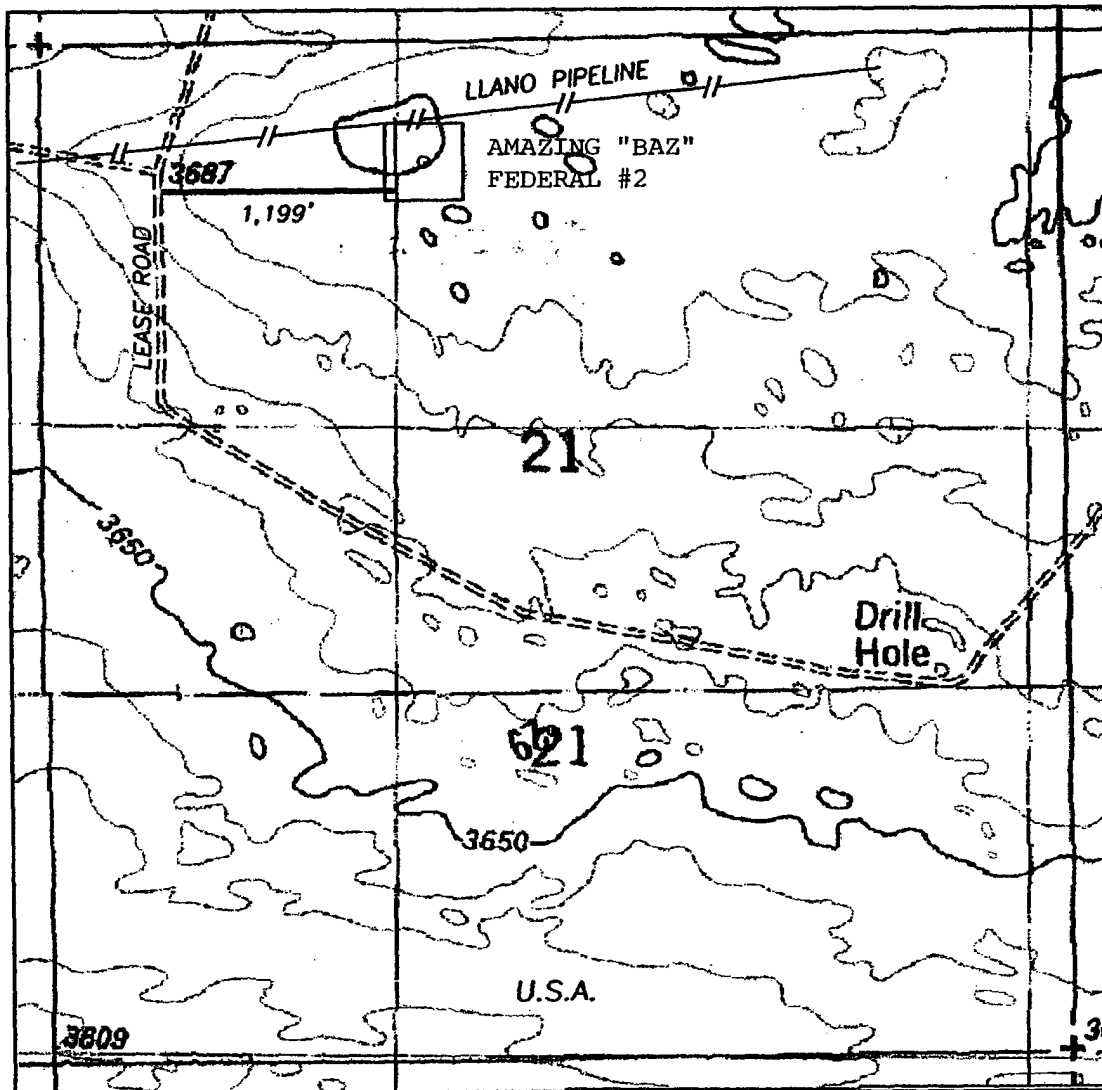




Yates Petroleum Corporation  
Amazing "BAZ" Federal #2  
600' FNL and 1980' FWL  
Section 21-T22S-R326E  
Lea County, New Mexico  
Exhibit "A"



SECTION 21, TOWNSHIP 22 SOUTH, RANGE 32 EAST, NMPM, LEA COUNTY, NEW MEXICO.



Yates Petroleum Corporation  
Amazing "BAZ" Federal #2  
600' FNL and 1980' FWL  
Section 21-T22S-R326E  
Lea County, New Mexico  
Exhibit "A-1"

1000' 0 1000' 2000'  
Scale 1" = 1000'

THE PREPARATION OF THIS PLAT AND THE PERFORMANCE OF THE SURVEY UPON WHICH IT IS BASED WERE DONE UNDER MY DIRECTION AND THE PLAT ACCURATELY DEPICTS THE RESULTS OF SAID SURVEY AND MEET THE REQUIREMENTS OF THE STANDARDS FOR LAND SURVEYS IN NEW MEXICO AS ADOPTED BY THE NEW MEXICO STATE BOARD OF REGISTRATION FOR PROFESSIONAL ENGINEERS AND SURVEYORS.

HERSCHEL L. JONES  
REGISTERED PROFESSIONAL SURVEYOR  
NEW MEXICO  
R.L.S. No. 3640

GENERAL SURVEYING COMPANY, P.O. BOX 1928  
LOVINGTON, NEW MEXICO 88260

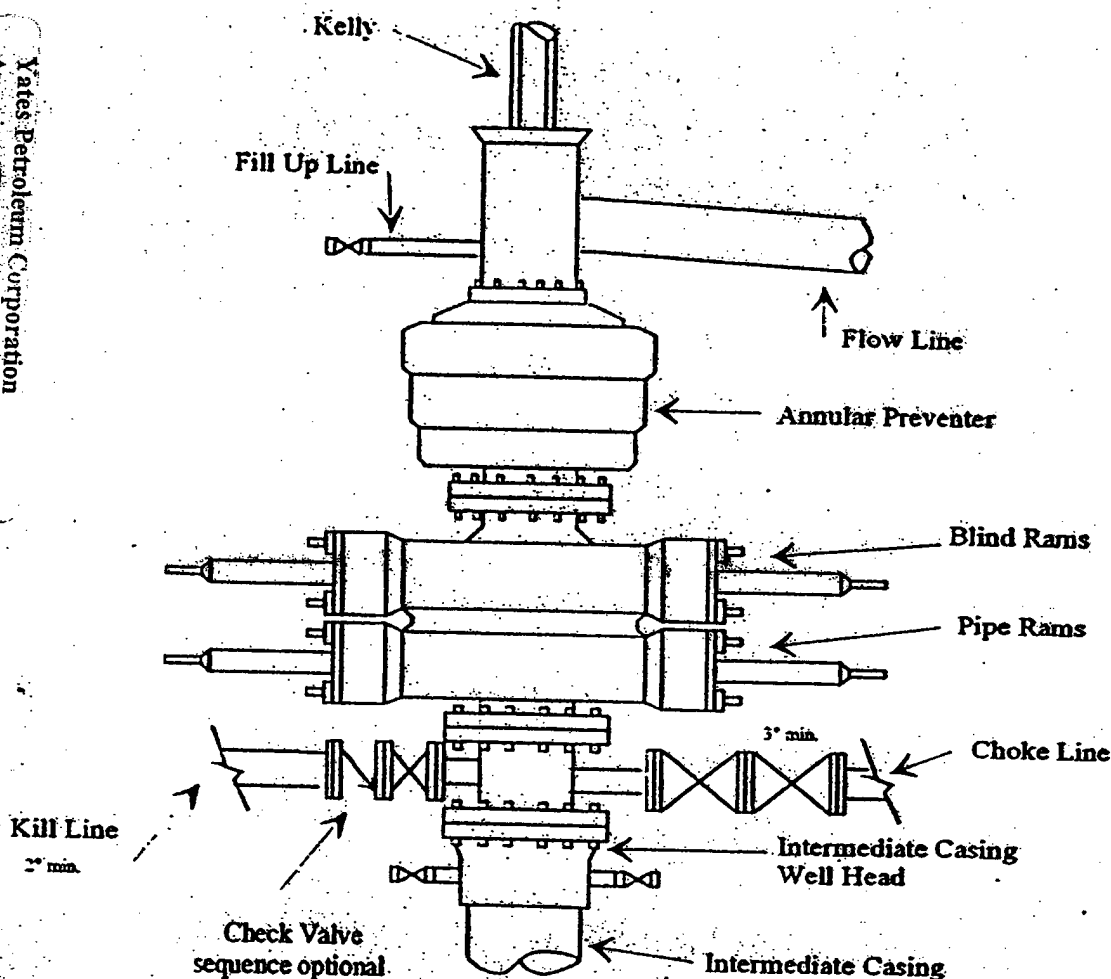
YATES PETROLEUM CORP.

LEASE ROAD TO ACCESS THE YATES  
WELL, LOCATED IN SECTION 21, TOWNSHIP 22 SOUTH,  
RANGE 32 EAST, NMPM, LEA COUNTY, NEW MEXICO.

Survey Date: 9/26/2002	Sheet 1 of 1 Sheets
Drawn By: Ed Blavins	W.O. Number
Date: 9/26/02	Scale 1" = 1000' GRACE 3

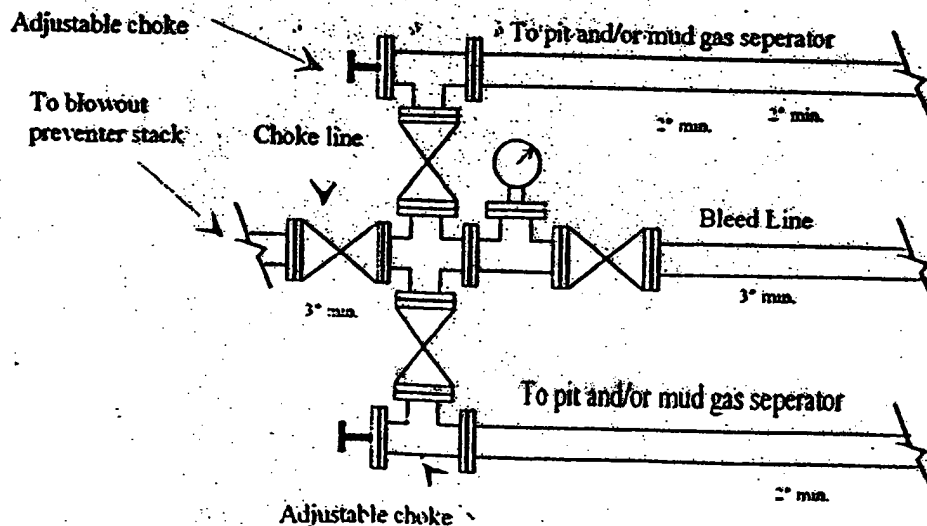


Typical 3,000 psi Pressure System  
Schematic  
Annular with Double Ram Preventer Stack



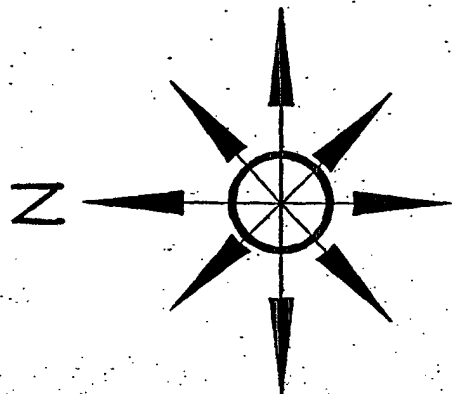
Xates Petroleum Corporation  
Amazing "BAZ" Federal #2  
600' FNL and 1980' FWL  
Section 21-T22S-R326E  
Lea County, New Mexico  
Exhibit "B"

Typical 3,000 psi choke manifold assembly with at least these minimum features

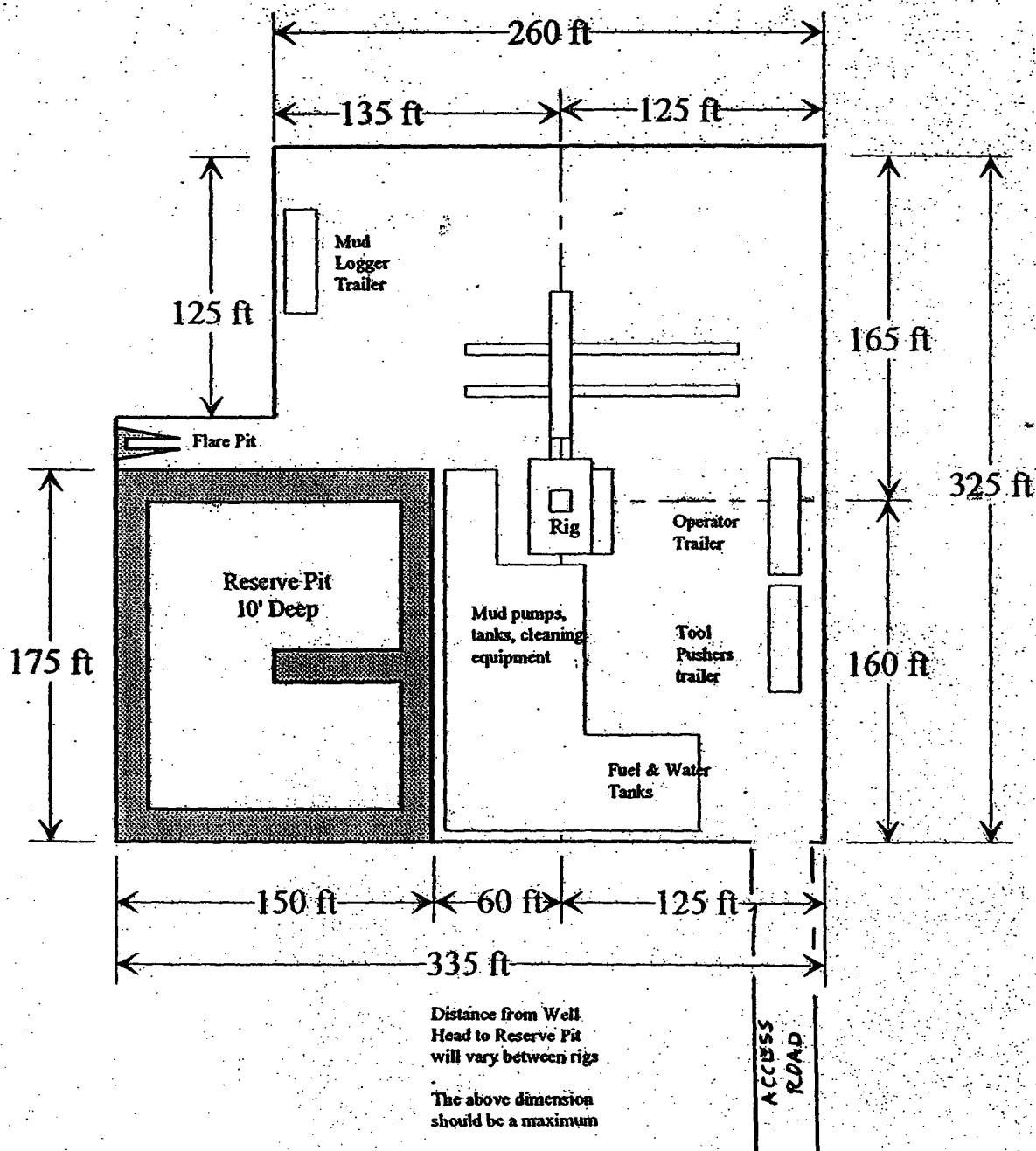


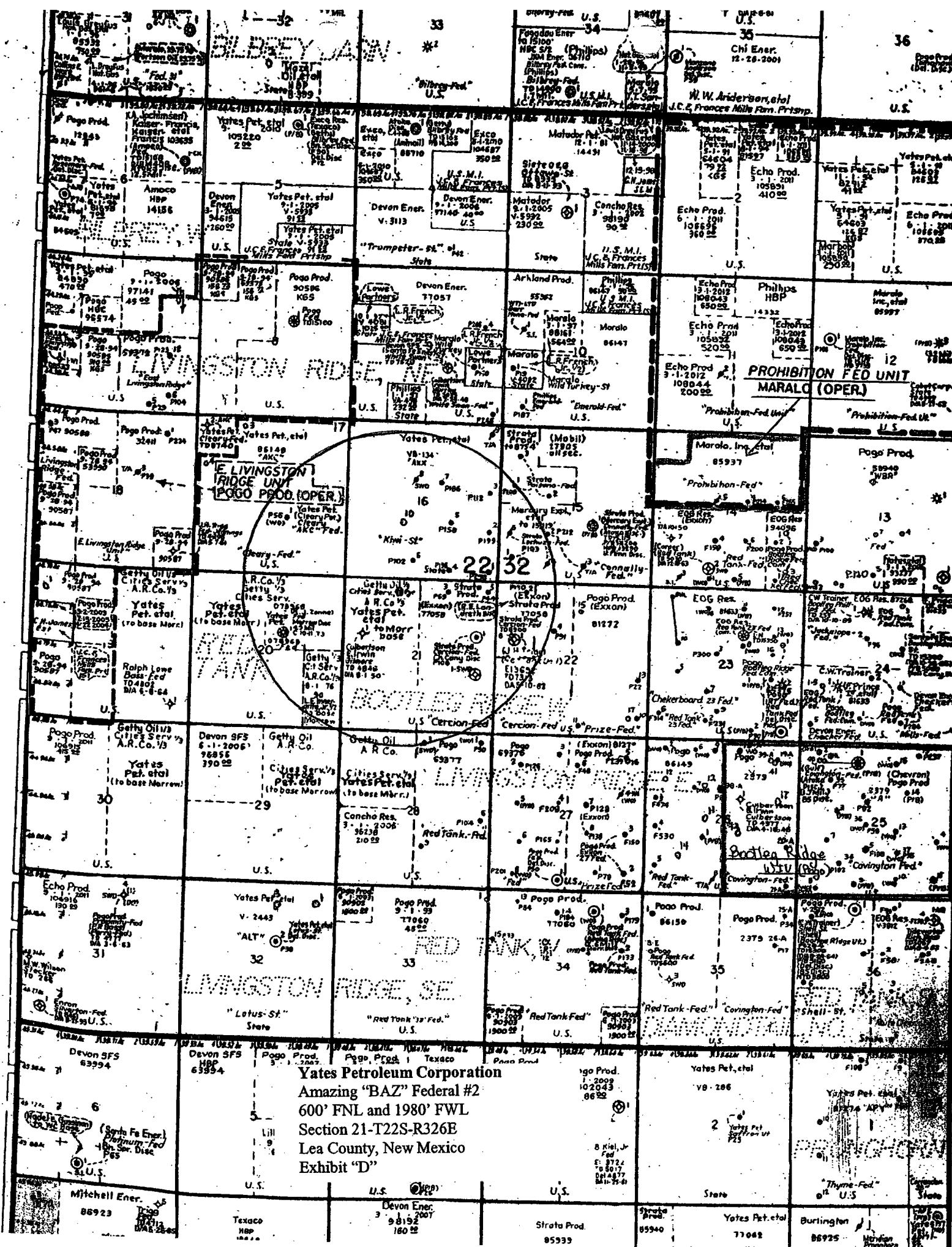
# Yates Petroleum Corporation

Location Layout for Permian Basin  
Up to 12,000'



Yates Petroleum Corporation  
Amazing "BAZ" Federal #2  
600' FNL and 1980' FWL  
Section 21-T22S-R326E  
Lea County, New Mexico  
Exhibit "C"





Yates Petroleum Corporation  
Amazing "BAZ" Federal #2  
600' FNL and 1980' FWL  
Section 21-T22S-R326E  
Lea County, New Mexico  
Exhibit "D"

District I  
1625 N. French Dr., Hobbs, NM 88240  
District II  
1301 W. Grand Avenue, Artesia, NM 88210  
District III  
1000 Rio Brazos Road, Aztec, NM 87410  
District IV  
1220 S. St. Francis Dr., Santa Fe, NM 87505

State of New Mexico  
Energy Minerals and Natural Resources

Form C-144  
March 12, 2004

Oil Conservation Division  
1220 South St. Francis Dr.  
Santa Fe, NM 87505

For drilling and production facilities, submit to  
appropriate NMOCD District Office.  
For downstream facilities, submit to Santa Fe  
office

**Pit or Below-Grade Tank Registration or Closure**

Is pit or below-grade tank covered by a "general plan"? Yes ☒ No ☐

Type of action: Registration of a pit or below-grade tank ☒ Closure of a pit or below-grade tank ☐

Operator: Yates Petroleum Corporation Telephone: (505) 748-4347 e-mail address: debbiec@ypcnm.com

Address: 105 South 4<sup>th</sup> Street, Artesia, NM 88210

Facility or well name: Amazing BAZ Federal #2 API #: 30-025-37011 U/L or Qtr/Qtr C Sec 21 T 22S R 32E

County: Lea Latitude N32.2257.9 Longitude W103.4054.5 NAD: 1927 ☒ 1983 ☐ Surface Owner -Federal ☒ State ☐ Private ☐ Indian ☐

Pit Type: Drilling ☒ Production ☐ Disposal ☐

Workover ☐ Emergency ☐

Lined ☒ Unlined ☐

Liner type: Synthetic ☒ Thickness 12 mil

Clay ☐ Volume 24,000 bbl

**Below-grade tank**

Volume: \_\_\_\_\_ bbl Type of fluid: \_\_\_\_\_

Construction material: \_\_\_\_\_

Double-walled, with leak detection? Yes ☐ If not, explain why not. \_\_\_\_\_

Depth to ground water (vertical distance from bottom of pit to seasonal high water elevation of ground water.)

Less than 50 feet

(20 points)

50 feet or more, but less than 100 feet

(10 points)

☒ 100 feet or more

☒ 0 points

Wellhead protection area: (Less than 200 feet from a private domestic water source, or less than 1000 feet from all other water sources.)

Yes

(20 points)

☒ No

☒ 0 points

Distance to surface water: (horizontal distance to all wetlands, playas, irrigation canals, ditches, and perennial and ephemeral watercourses.)

Less than 200 feet

(20 points)

200 feet or more, but less than 1000 feet

(10 points)

☒ 1000 feet or more

☒ 0 points

**Ranking Score (Total Points)**

☒ 0 Points

**If this is a pit closure:** (1) attach a diagram of the facility showing the pit's relationship to other equipment and tanks. (2) Indicate disposal location:

onsite ☐ offsite ☐ If offsite, name of facility \_\_\_\_\_ (3) Attach a general description of remedial action taken including remediation start date and end date. (4) Groundwater encountered: No ☐ Yes ☐ If yes, show depth below ground surface \_\_\_\_\_ ft. and attach sample results. (5) Attach soil sample results and a diagram of sample locations and excavations.

I hereby certify that the information above is true and complete to the best of my knowledge and belief. I further certify that the above-described pit or below-grade tank has been/will be constructed or closed according to NMOCD guidelines ☐, a general permit ☒, or an (attached) alternative OCD-approved plan ☐.

Date: October 12, 2004

Printed Name/Title Clifton R. May/Regulatory Agent Signature \_\_\_\_\_

Your certification and NMOCD approval of this application/closure does not relieve the operator of liability should the contents of the pit or tank contaminate ground water or otherwise endanger public health or the environment. Nor does it relieve the operator of its responsibility for compliance with any other federal, state, or local laws and/or regulations.

Approval:

DEC 14 2004

Date: \_\_\_\_\_

Printed Name/Title \_\_\_\_\_

Signature \_\_\_\_\_

ORIGINAL SIGNED BY:  
PAUL F. KAUTZ  
PETROLEUM ENGINEER