

Form 3160-3
(April 2004)

OPER. OGRID NO. 17891
PROPERTY NO. 9350
POOL CODE 51683
EFF. DATE _____
API NO. 30-025-37008

strict

FORM APPROVED
OMB No. 1004-0137
Expires March 31, 2007

BUREAU OF LAND MANAGEMENT
APPLICATION FOR PERMIT TO DRILL OR REENTER

1a. Type of work: <input checked="" type="checkbox"/> DRILL <input type="checkbox"/> REENTER		6. If Indian, Allottee or Tribe Name	
1b. Type of Well: <input checked="" type="checkbox"/> Oil Well <input type="checkbox"/> Gas Well <input type="checkbox"/> Other <input checked="" type="checkbox"/> Single Zone <input type="checkbox"/> Multiple Zone		7. If Unit or CA Agreement, Name and No.	
2. Name of Operator Pogo Producing Company		8. Lease Name and Well No. WBR Federal #8	
3a. Address P.O. Box 10340, Midland, TX		9. API Well No. 30-025- 35819 37008	
3b. Phone No. (include area code) 432-685-8100		10. Field and Pool, or Exploratory Red Tank Bone Spring	
4. Location of Well (Report location clearly and in accordance with any State requirements*) At surface 330" FSL & 990' FWL At proposed prod. zone Unit m		11. Sec., T. R. M. or Blk and Survey or Area Sec 13, T22S, R32E	
14. Distance in miles and direction from nearest town or post office* Approximately 30 miles East of Carlsbad		12. County or Parish Lea County	13. State NM
15. Distance from proposed* location to nearest property or lease line, ft. (Also to nearest drig. unit line, if any) 750	16. No. of acres in lease 600	17. Spacing Unit dedicated to this well 40	
18. Distance from proposed location* to nearest well, drilling, completed, applied for, on this lease, ft. 1000	19. Proposed Depth 10,200	20. BLM/BIA Bond No. on file 29771	
21. Elevations (Show whether DF, KDB, RT, GL, etc.) 3715' GR	22. Approximate date work will start* When Approved	23. Estimated duration	
24. Attachments Carlsbad Controlled Water Basin			

The following, completed in accordance with the requirements of Onshore Oil and Gas Order No. 1, shall be attached to this form:

- Well plat certified by a registered surveyor.
- A Drilling Plan.
- A Surface Use Plan (if the location is on National Forest System Lands, the SUPO shall be filed with the appropriate Forest Service Office).
- Bond to cover the operations unless covered by an existing bond on file (see Item 20 above).
- Operator certification.
- Such other site specific information and/or plans as may be required by the authorized officer.

25. Signature <u>Cathy Wright</u>	Name (Printed/Typed) Cathy Wright	Date 11/03/04
Title Sr. Eng. Tech		
Approved by (Signature) <u>Russ Sorenson</u>	Name (Printed/Typed) Russ Sorenson	Date DEC 6 2004
Title ACTING FIELD MANAGER		
Office CARLSBAD FIELD OFFICE		

Application approval does not warrant or certify that the applicant holds legal or equitable title to those rights in the subject lease which would entitle the applicant to conduct operations thereon.
Conditions of approval, if any, are attached.

APPROVAL FOR 1 YEAR

Title 18 U.S.C. Section 1001 and Title 43 U.S.C. Section 1212, make it a crime for any person knowingly and willfully to make to any department or agency of the United States any false, fictitious or fraudulent statements or representations as to any matter within its jurisdiction.

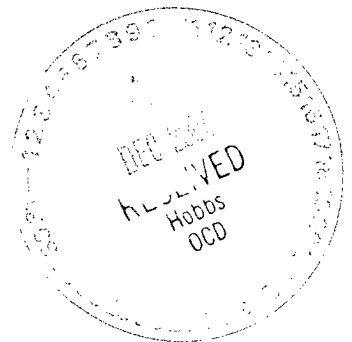
*(Instructions on page 2)

APPROVAL SUBJECT TO
GENERAL REQUIREMENTS AND
SPECIAL STIPULATIONS
ATTACHED

KZ

WBR FEDERAL #8
Drilling Plan

1. Drill 25" hole to 40'. Set 40' of 20" conductor pipe and cmt to surface w/ Redi-mix.
2. Drill 17-1/2" hole to 1000'. Run & set 1000' of 13-3/8" 48# H-40 ST&C csg. Cmt w/ 1000 sks Cl "C" cmt + add. Circ cmt to surface.
3. Drill 12-1/4" hole to 4700'. Run & set 4700' 8-5/8" 32# J-55 ST&C casing as follows: 500' 32# S-80 ST&C, 4200' 32# J-55 ST&C. Cmt w/ 1800 sks Cl "C" cmt + 2% CaCl₂. Circ cmt to surface.
4. Drill 7-7/8" hole to 10,200'. Run & set 10,200' of 5-1/2" csg as follows: 3200' 17# N-80 LT&C, 5000' 17# J-55 LT&C, 2000' 17# ~~J-55~~ N-80 LT&C. Cmt in 2 stages w/ stage tool at 7000' ±. Cmt w/ 1200 sks Cl "H" + add. Est TOC 3000' from surface.



DISTRICT I
P.O. Box 1990, Hobbs, NM 88241-1990

DISTRICT II
P.O. Drawer 20, Artesia, NM 88211-0719

DISTRICT III
1000 Elie Brazos Rd., Artesia, NM 87410

DISTRICT IV
P.O. Box 2088, Santa Fe, NM 87504-2088

State of New Mexico
Energy, Minerals and Natural Resources Department

OIL CONSERVATION DIVISION
P.O. Box 2088
Santa Fe, New Mexico 87504-2088

Form C-102
Revised February 10, 1994
Submit to Appropriate District Office
State Lease - 4 Copies
Fee Lease - 3 Copies

WELL LOCATION AND ACREAGE DEDICATION PLAT

☐ AMENDED REPORT

API Number 30-025-37008	Pool Code 51683	Pool Name RED TANK - BONE SPRING
Property Code 9350	Property Name W.B.R. FEDERAL	Well Number 8
OGRID No. 17891	Operator Name POGO PRODUCING COMPANY	Elevation 3715'

Surface Location

UL or lot No.	Section	Township	Range	Lot Idn	Feet from the	North/South line	Feet from the	East/West line	County
M	13	22-S	32-E		330	SOUTH	990	WEST	LEA

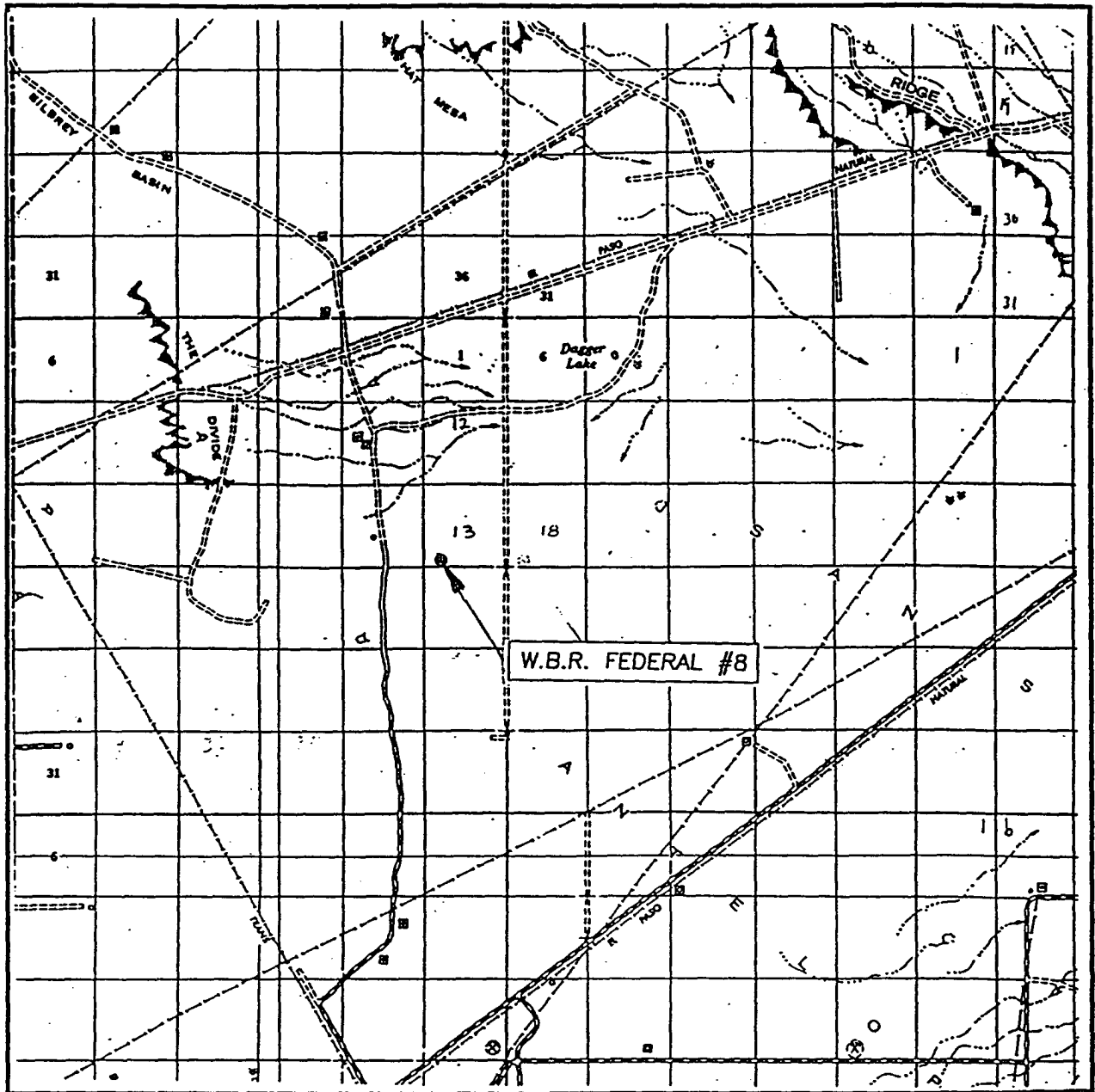
Bottom Hole Location If Different From Surface

UL or lot No.	Section	Township	Range	Lot Idn	Feet from the	North/South line	Feet from the	East/West line	County
Dedicated Acres 40	Joint or Infill	Consolidation Code	Order No.						

NO ALLOWABLE WILL BE ASSIGNED TO THIS COMPLETION UNTIL ALL INTERESTS HAVE BEEN CONSOLIDATED
OR A NON-STANDARD UNIT HAS BEEN APPROVED BY THE DIVISION

	OPERATOR CERTIFICATION I hereby certify that the information contained herein is true and complete to the best of my knowledge and belief. Signature Joe T. Janica Printed Name Agent Title 05/09/01 Date	
	SURVEYOR CERTIFICATION I hereby certify that the well location shown on this plat was plotted from field notes of actual surveys made by me or under my supervision and that the same is true and correct to the best of my belief. MAY 02, 2001 Date Surveyed Signature & Seal of Professional Surveyor 61-17-0516 Certificate No. RONALD J. EIDSON 3239 GARY EIDSON 12541	

VICINITY MAP



SCALE: 1" = 2 MILES

SEC. 13 TWP. 22-S RGE. 32-E

SURVEY N.M.P.M.

COUNTY LEA

DESCRIPTION 330' FSL & 990' FWL

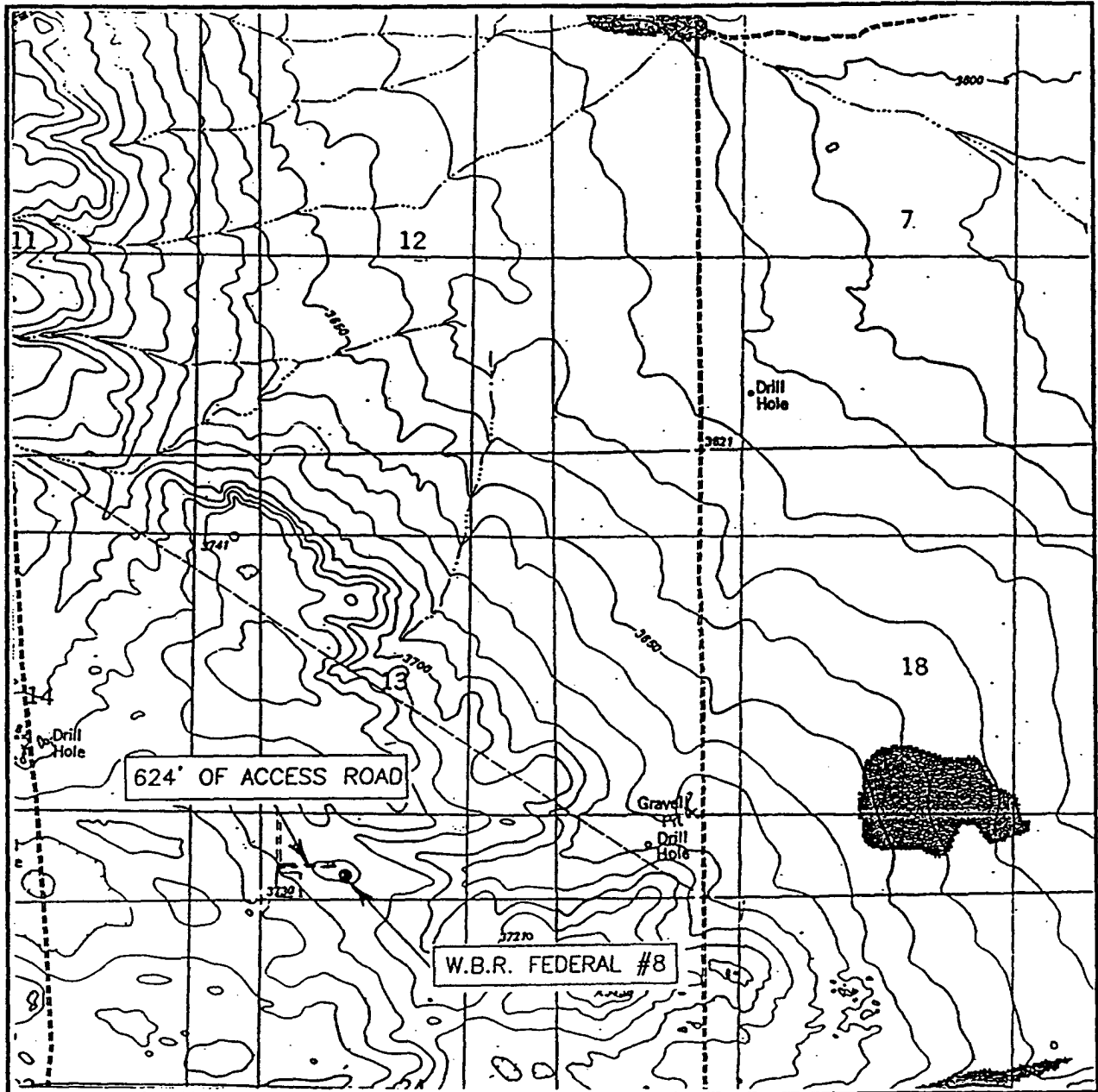
ELEVATION 3715'

OPERATOR POGO PRODUCING COMPANY

LEASE W.B.R. FEDERAL

JOHN WEST SURVEYING
HOBBS, NEW MEXICO
(505) 393-3117

LOCATION VERIFICATION MAP



SCALE: 1" = 2000'

CONTOUR INTERVAL: 10'

THE DIVIDE, N.M.

SEC. 13 TWP. 22-S RGE. 32-E

SURVEY N.M.P.M.

COUNTY LEA

DESCRIPTION 330' FSL & 990' FWL

ELEVATION 3715'

OPERATOR POGO PRODUCING COMPANY

LEASE W.B.R. FEDERAL

U.S.G.S. TOPOGRAPHIC MAP

THE DIVIDE, N.M.

JOHN WEST SURVEYING
HOBBS, NEW MEXICO
(505) 393-3117

APPLICATION TO DRILL

POGO PRODUCING COMPANY
WBR FEDERAL # 8
UNIT "M" SECTION 13
T22S-R32E LEA CO. NM

In response to questions asked under Section II of Bulletin NTL-6 the following information on the above well is provided for your consideration.

1. Location: 330' FSL & 990' FWL SEC. 13 T22S-R32E LEA CO. NM
2. Elevation above Sea Level: 3715' GR.
3. Geologic name of surface formation: Quaternary Aeolian Deposits.
4. Drilling tools and associated equipment: Conventional rotary drilling rig using drilling mud as a circulating medium for solids removal from hole.
5. Proposed drilling depth: 10,200'
6. Estimated tops of geological markers:

Rustler Anhydrite	900'	Cherry Canyon	6000'
Basal Anhydrite	4500'	Brushy Canyon	7000'
Delaware	4842'	Bone Spring	8730'
Ramsey Sand	4920'	1st Bone Spring Sand	9850'
7. Possible mineral bearing formations:

Delaware	Oil	Brushy Canyon	Oil
Cherry Canyon	Oil	Bone Spring	Oil
8. Casing program:

Hole size	Interval	OD of casing	Weight	Thread	Collar	Grade
25"	0-40	20"	NA	NA	NA	Conductor
17½"	0-1000'	13 3/8"	48	8-R	ST&C	H-40
12½"	0-4700'	8 5/8"	32	8-R	ST&C	J-55 S-80
7 7/8"	0-10,200'	5½"	17	8-R	LT&C	N-80 J-55

APPLICATION TO DRILL

POGO PRODUCING COMPANY

WBR FEDERAL # 8

UNIT "M" SECTION 13

T22S-R32E LEA CO. NM

9. CEMENTING & SETTING DEPTH:

20"	Conductor	Set 40' of 20" conductor pipe and cement to surface with Redi-mix.
13 3/8"	Surface	Set 1000' of 13 3/8" 48# H-40 ST&C casing. Cement with 1000 Sx. of Class "C" cement + additives circulate to surface.
8 5/8"	Intermediate	Set 4700' of 8 5/8" 32# J-55 ST&C casing. Cement with 1800 of Class "C" cement + 2% CaCl, + 1/2# Flocele/Sx. circulate cement to surface.
5 1/2"	Production	Set 10,200' of 5 1/2" casing as follows: 3200' of 5 1/2" 17# N-80 LT&C, 5000' of 5 1/2" 17# J-55 LT&C, 2000' of 5 1/2" 17# N-80 LT&C Cement in two stages, DV Tool at 7000'±, cement with 1200 Sx of Class "H" Premium Plus cement + additives, estimate top of cement 3000' from surface.

10. PRESSURE CONTROL EQUIPMENT: Exhibit "E" shows a 1500 Series 5000 PSI working pressure B.O.P. consisting of an annular bag type preventor, middle blind rams and bottom pipe rams. The B.O.P. will be nipped up on the 13 3/8" casing and tested to API specifications. The B.O.P. will be operated at least once in each 24 hour period and the blind rams will be operated when drill pipe is out of hole on trips. Full opening stabbing valve and upper kelly cock will be utilized. Exhibit "E-1" shows a hydraulically operated closing unit and a 2" 5000 PSI choke manifold with dual adjustable chokes. No abnormal pressures or temperatures are expected.

*3" CHOKES LINES/VALVES*11. PROPOSED MUD CIRCULATING SYSTEM:

DEPTH	MUD WT.	VISC.	FLUID LOSS	TYPE MUD SYSTEM
40-1000'	8.4-8.7	29-38	NC	Fresh water mud add paper to control seepage and use high viscosity sweeps to clean hole
1000-4700'	10.2-10.3	29-38	NC	Brine water using high viscosity sweeps to clean hole.
4700-10,200'	8.4-8.8	29-39	NC	Fresh water using high viscosity sweeps to clean hole. water loss may be needed to run logs and/or casing, if needed use a polymer system to accomplish this

Sufficient mud materials will be kept on location at all times in order to combat lost circulation, or unexpected kicks. In order to run DST's, open hole logs, and casing viscosity and/or water loss may have to be adjusted to meet these needs.

APPLICATION TO DRILL

POGO PRODUCING COMPANY
WBR FEDERAL # 8
UNIT "M" SECTION 13
T22S-R32E LEA CO. NM

12. Testing, Logging and Coring Program:

- A. Open hole logs: Dual Induction, SNP, LDT, Sonic, Caliper & Gamma Ray from TD to 4700'. Run Gamma Ray, Neutron from 4700' to surface.
- B. Mud logger will be put on hole at 4700'± and remain on hole to TD.
- C. No DST's or cores are planned at this time

13. Potential Hazards:

No abnormal pressures or temperatures are expected. Hydrogen Sulfide gas may be encountered, H₂S detectors will be in place to detect any presence. No lost circulation is expected to occur. All personnel will be familiar with all aspects of safe operation of equipment being used. Estimated BHP 5000 PSI, estimated BHT 175° .

14. Anticipated Starting Date and Duration of Operation:

Road and location construction will begin after BLM approval of APD. Anticipated spud date as soon as approved. Drilling expected to take 40 days. If production casing is run an additional 30 days will be required to complete and construct surface facilities.

15. Other Facets of Operations:

After running casing, cased hole gamma ray neutron collar logs will be run from total depth over possible pay intervals. The Bone Spring pay will be perforated and stimulated. The well will be swab tested and potentialized as an oil well.

HYDROGEN SULFIDE DRILLING OPERATIONS PLAN

1. All Company and Contract personnel admitted on location must be trained by a qualified H₂S safety instructor to the following:
 - A. Characteristics of H₂S
 - B. Physical effects and hazards
 - C. Proper use of safety equipment and life support systems.
 - D. Principle and operation of H₂S detectors, warning system and briefing areas.
 - E. Evacuation procedure, routes and first aid.
 - F. Proper use of 30 minute pressure demand air pack.
2. H₂S Detection and Alarm Systems
 - A. H₂S detectors and audio alarm system to be located at bell nipple, end of blooie line (mud pit) and on derrick floor or doghouse.
3. Windsock and/or wind streamers
 - A. Windsock at mudpit area should be high enough to be visible.
 - B. Windsock at briefing area should be high enough to be visible.
 - C. There should be a windsock at entrance to location.
4. Condition Flags and Signs
 - A. Warning sign on access road to location.
 - B. Flags to be displayed on sign at entrance to location. Green flag, normal safe condition. Yellow flag indicates potential pressure and danger. Red flag, danger, H₂S present in dangerous concentration. Only emergency personnel admitted to location.
5. Well control equipment
 - A. See exhibit "E"
6. Communication
 - A. While working under masks chalkboards will be used for communication.
 - B. Hand signals will be used where chalk board is inappropriate.
 - C. Two way radio will be used to communicate off location in case of emergency help is required. In most cases cellular telephoned will be available at most drilling foreman's trailer or living quarters.
7. Drillstem Testing
 - A. Exhausts will be watered.
 - B. Flare line will be equipped with an electric ignitor or a propane pilot light in case gas reaches the surface.
 - C. If the location is near to a dwelling a closed DST will be performed.

HYDROGEN SULFIDE DRILLING OPERATIONS PLAN

8. Drilling contractor supervisor will be required to be familiar with the effects H₂S has on tubular goods and other mechanical equipment.
9. If H₂S is encountered, mud system will be altered if necessary to maintain control of formation. A mud gas separator will be brought into service along with H₂S scavengers if necessary.

SURFACE USE PLAN

POGO PRODUCING COMPANY

WBR FEDERAL # 8

UNIT "M" SECTION 13

T22S-R32E LEA CO. NM

1. EXISTING ROADS: Area maps, Exhibit "B" is a reproduction of a County General Highway Map. Exhibit "C" is a reproduction of a USGS Topographic Map, showing existing roads and proposed roads. All existing roads will be maintained in a condition equal to or better than current conditions. Any new roads will be constructed to BLM specifications.
 - A. Exhibit "A" shows the proposed well site as staked.
 - B. From Hobbs, New Mexico take U.S. Hi-way 62-180 West toward Carlsbad New Mexico go 38 miles to Cr-29 turn South go 14 miles to Mills Ranch road, turn East follow road 8 \pm miles turn South go by well # 2 turn East go 660' to location.
 - C. Lay flowlines & construct powerlines along roads or along existing R-O-W's.
2. PLANNED ACCESS ROADS: Approximately 600' of new road will be constructed.
 - A. The access road will be crowned and ditched to a 12'00" wide travel surface with a 40' right-of-way.
 - B. Gradient on all roads will be less than 5.00%.
 - C. Turn outs will be constructed where necessary.
 - D. If needed, road will be surfaced with a minimum of 4" of caliche. This material will be obtained from a local source.
 - E. Centerline for the new access road has been flagged. Earthwork will be as required by field conditions.
 - F. Culverts in the access road will not be used. The road will be constructed to utilize low water crossings for drainage as required by the Topography.
3. LOCATION OF EXISTING WELLS IN A ONE-MILE RADIUS EXHIBIT "A-1"

A. Water wells	-	Water well approximately 1 mi North
B. Disposal wells	-	None known
C. Drilling wells	-	None Known
D. Producing wells	-	As shown on Exhibit "A-1"
E. Abandoned wells	-	As shown on Exhibit "A-1"

SURFACE USE PLAN

POGO PRODUCING COMPANY
WBR FEDERAL # 8
UNIT "M" SECTION 13
T22S-R32E LEA CO. NM

4. If, upon completion this well is a producer Pogo Producing Company will furnish maps and/or plats showing on site facilities or off site facilities if needed. This will be accompanied with a Sundry Notice.
5. LOCATION AND TYPE OF WATER SUPPLY:
Water will be purchased locally from a commercial source and trucked over the access roads or piped in flexible lines laid on top of the ground.
6. SOURCE OF CONSTRUCTION MATERIAL:
If possible construction will be obtained from the excavation of drill site, if additional material is needed it will be purchased from a local source and transported over the access route as shown on Exhibit "C".
7. METHODS OF HANDLING WASTE MATERIAL:
 - A. Drill cuttings will be disposed of in the reserve pit.
 - B. All trash, junk and other waste material will be contained in trash cages or bins to prevent scattering. When the job is completed all contents will be removed and disposed of in a approved sanitary land fill.
 - C. Salts remaining after completion of well will be picked up by supplier including broken sacks.
 - D. Sewage from living quarters will drain into holes with a minimum depth of 10'. These holes will be covered during drilling and will be back filled upon completion. A Porta-John will be provided for the rig crews. This equipment will be properly maintained during the drilling operations and removed upon completion of the well.
 - E. Remaining drilling fluids will be allowed to evaporate in the reserve pit until the pit is dry enough for breaking out. In the event that drilling fluids do not evaporate in a reasonable time they will be hauled off by transports and be disposed of at a state approved disposal facility. Later pits will be broken out to speed drying. Water produced during testing will be put in reserve pits. Any oil or condensate produced will be stored in test tanks until sold and hauled from the site.
8. ANCILLARY FACILITIES:
 - A. No camps or airstrips to be constructed.

SURFACE USE PLAN

POGO PRODUCING COMPANY
WBR FEDERAL # 8
UNIT "M" SECTION 13
T22S-R32E LEA CO. NM

9. WELL SITE LAYOUT

- A. Exhibit "D" shows the proposed well site layout.
- B. This exhibit indicated proposed location of reserve and sump pits and living facilities.
- C. Mud pits in the active circulating system will be steel pits & the reserve pit is proposed to be unlined unless subsurface condition encountered during pit construction indicate that lining is needed for lateral containment of fluids.
- D. If needed, the reserve pit is to be lined with polyethelene. The pit liner will be 6 mils thick. Pit liner will extend a minimum 2'00" over the reserve pits dikes where the liner will be anchored down.
- E. The reserve pit will be fenced on three sides with four strands of barbed wire during drilling and completion phases. The fourth side will be fenced after all drilling operations have ceased. If the well is a producer, the reserve pit fence will be torn down. The reserve pit and those areas of the location not essential to production facilities will be reclaimed and seeded per BLM requirements.

10. PLANS FOR RESTORATION OF SURFACE

Rehabilitation of the location and reserve pit will start in a timely manner after all drilling operations cease. The type of reclamation will depend on whether the well is a producer or a dry hole.

However, in either event, the reserve pit will be allowed to dry properly, and fluid removed and disposed of in accordance with Article 7.B as previously noted. The pit area will then be leveled and contoured to conform to the original and surrounding area. Drainage systems, if any, will be reshaped to the original configuration with provisions made to alleviate erosion. These may need to be modified in certain circumstances to prevent inundation of the location's pad and surface facilities. After the area has been shaped and contoured, topsoil from the spoil pile will be placed over the disturbed area to the extent possible. Revegetation procedures will comply with BLM standards.

If the well is a dry hole, the pad and road area will be contoured to match the existing terrain. Topsoil will be spread to the extent possible. Revegetation will comply with BLM standards.

Should the well be a producer, the previously noted procedures will apply to those areas which are not required for production facilities.

SURFACE USE PLAN

POGO PRODUCING COMPANY
WBR FEDERAL # 8
UNIT "M" SECTION 13
T22S-R32E LEA CO. NM

11. OTHER INFORMATION:

- A. Topography consists of sand dunes with a slight dip toward the West. Deep sandy soil supports native grasses, mesquite, and shinnery Oak.
- B. Surface is owned by the Bureau of Land Management U.S. Department of Interior. Surface is used for grazing of livestock and is leased to ranchers for this purpose.
- C. An archaeological survey will be conducted and copies of the survey will be filed in the Carlsbad Office of The Bureau of Land Management.
- D. There are no dwellings or habitation within three miles of this location.

12. OPERATORS REPRESENTATIVE:

Before construction:

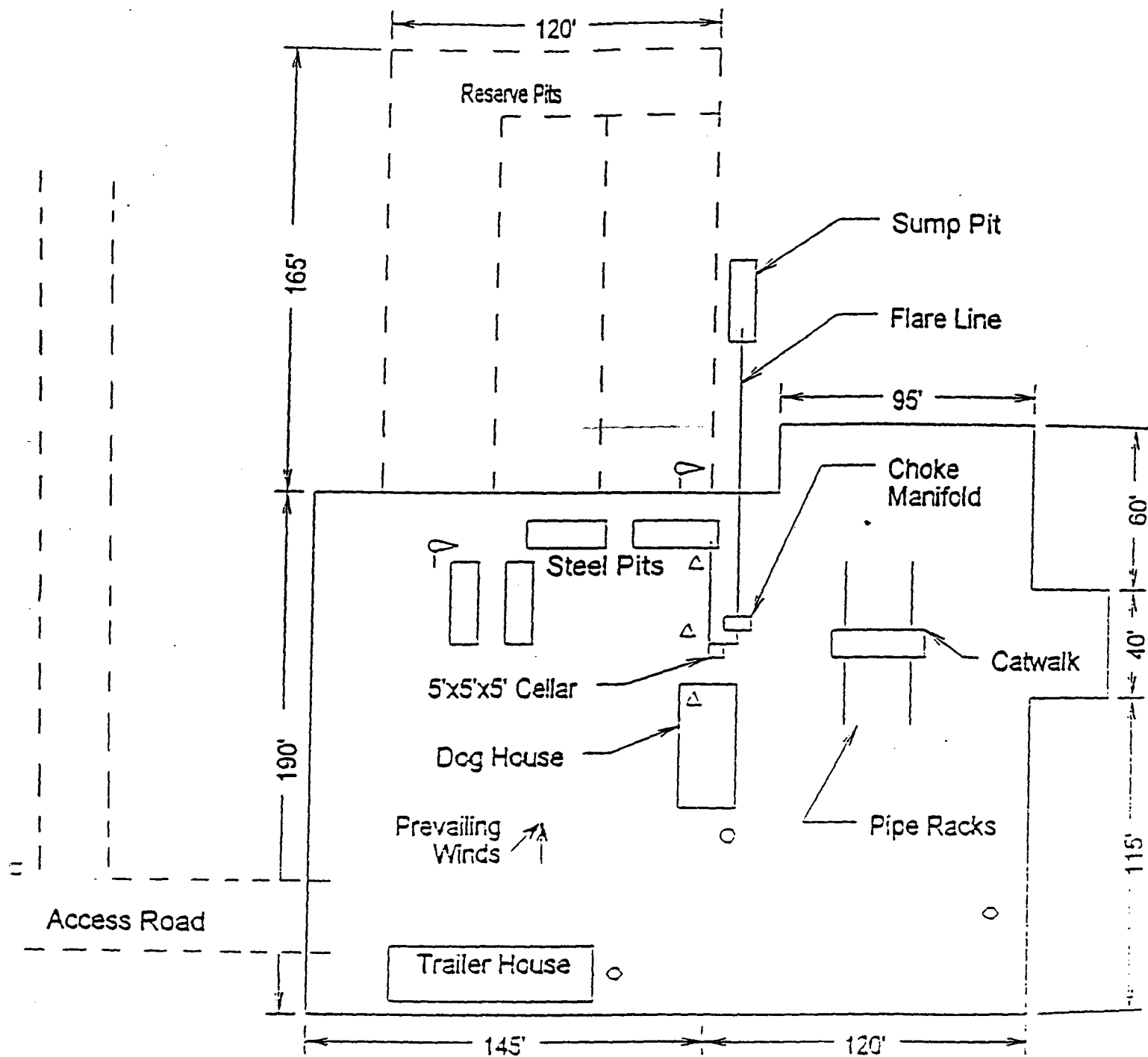
TIERRA EXPLORATION INC.
P.O. BOX 2188
HOBBS, NEW MEXICO 88241
OFFICE PHONE 505-391-8503
JOE T. JANICA

During and after construction:

POGO PRODUCING COMPANY
P.O. BOX 10340
MIDLAND, TEXAS 79702-7340
OFFICE PHONE 915-685-8100
MR. RICHARD WRIGHT 915-685-8140

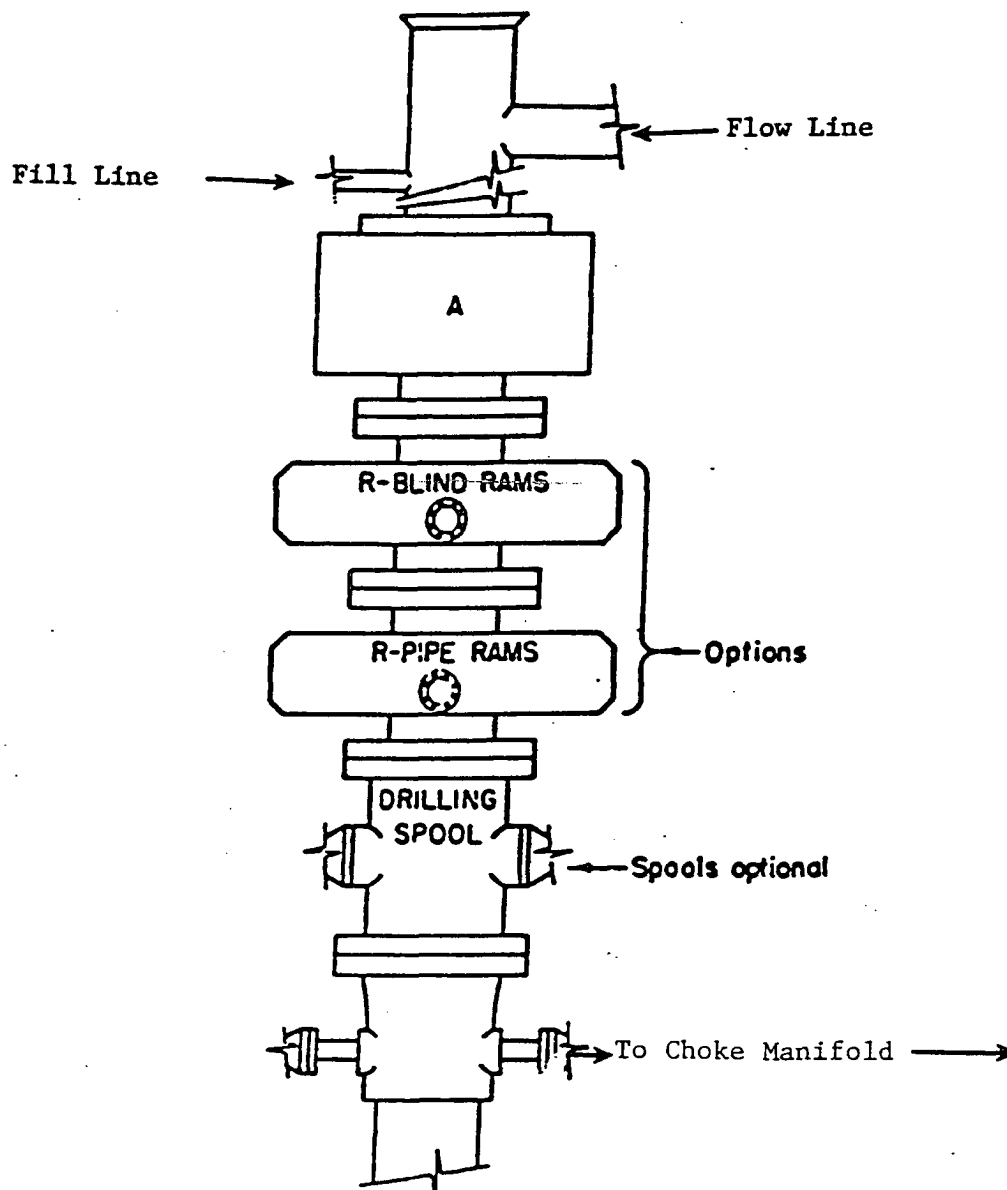
13. CERTIFICATION: - I hereby certify that I, or persons under my direct supervision have inspected the proposed drill site and access route; that I am familiar with the conditions which currently exist; that the statements made in this plan are to the best of my knowledge, true and correct; and that the work associated with the operations proposed herein will be performed by Pogo Producing company, its contractors/subcontractors is in the conformity with this plan and the terms and conditions under which it is approved. This statement is subject to the provision of U.S.C. 1001 for the filing of a false statement.

NAME : Joe T Janica
DATE : 05/09/01
TITLE : Agent



- Wind Direction Indicators
(wind sock or streamers)
- △ H2S Monitors
(alarms at bell nipple and shale shaker)
- Briefing Areas
- Remote EOP Closing Unit
- Sign and Condition Flags

EXHIBIT "D"
RIG LAYOUT PLAT
POGO PRODUCING COMPANY
WBR FEDERAL # 8
UNIT "K" SECTION 13
T22S-R32E LEA CO. NM



ARRANGEMENT SRRA

1500 Series

5000# Working Pressure

EXHIBIT "E"
SKETCH OF B.O.P. TO BE USED ON

POGO PRODUCING COMPANY
WBR FEDERAL # 8
UNIT "K" SECTION 13
T22S-R32E LEA CO. NM

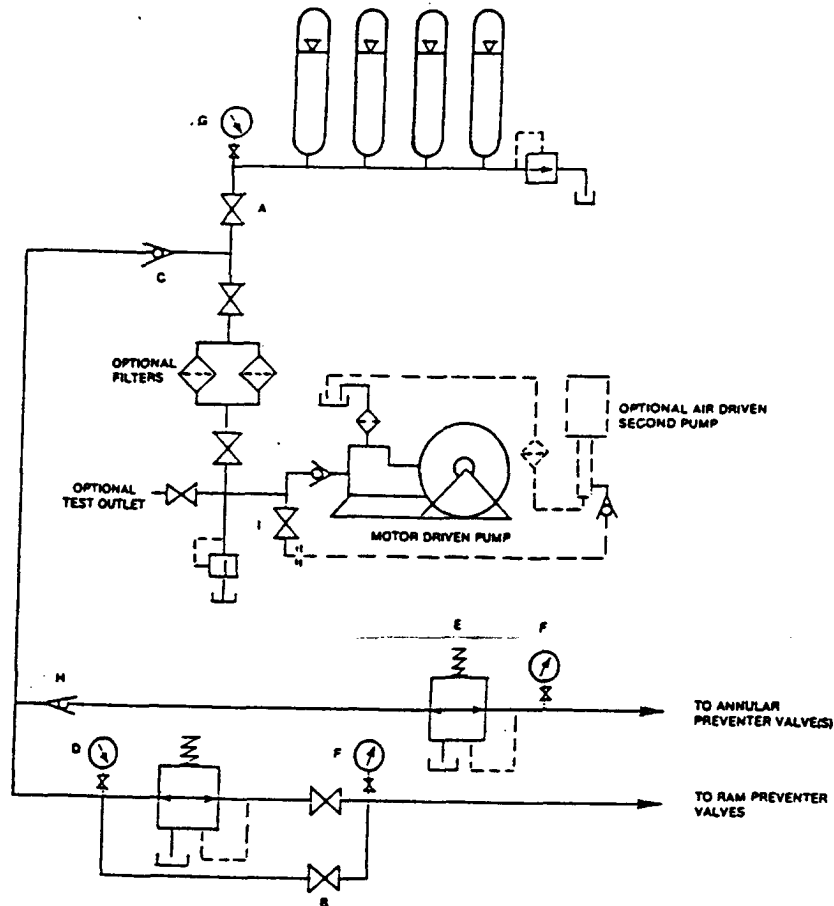


FIGURE K6-1. The schematic sketch of an accumulator system shows required and optional components.

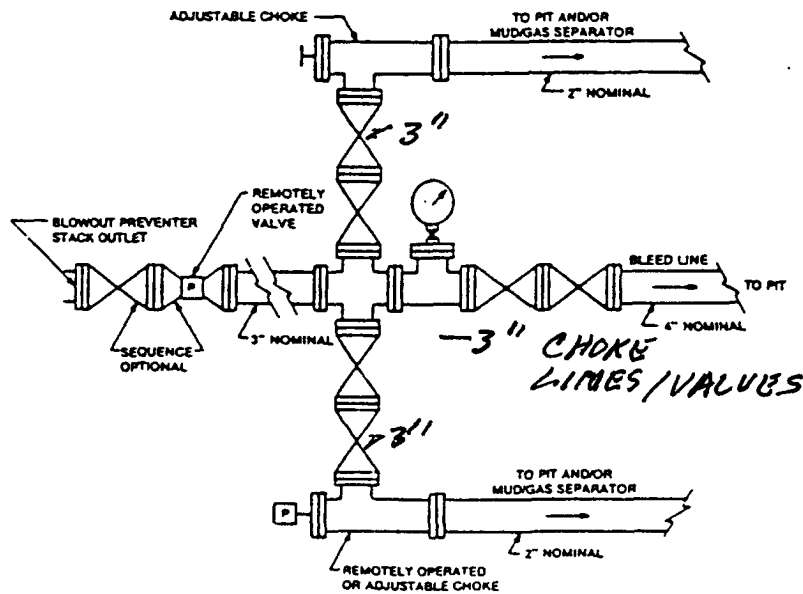


FIGURE K4-2. Typical choke manifold assembly for 5M rated working pressure service — surface installation.

EXHIBIT "E-1"
CHOKE MANIFOLD & CLOSING UNIT

POGO PRODUCING COMPANY
WBR FEDERAL § 8
UNIT "K" SECTION 13
T22S-R32E LEA CO. NM

District I
1625 N. French Dr., Hobbs, NM 88240
District II
1301 W. Grand Avenue, Artesia, NM 88210
District III
1000 Rio Brazos Road, Aztec, NM 87410
District IV
1220 S. St. Francis Dr., Santa Fe, NM 87505

State of New Mexico
Energy Minerals and Natural Resources

Oil Conservation Division
1220 South St. Francis Dr.
Santa Fe, NM 87505

Form C-14
March 12, 2004

For drilling and production facilities, submit to appropriate NMOCD District Office.
For downstream facilities, submit to Santa Fe office

Pit or Below-Grade Tank Registration or Closure

Is pit or below-grade tank covered by a "general plan"? Yes ☐ No ☒

Type of action: Registration of a pit or below-grade tank ☒ Closure of a pit or below-grade tank ☐

Operator: Pogo Producing Company Telephone: 432-685-8100 e-mail address: wrightc@pogoproducing.com
Address: P. O. Box 10340, Midland, TX 79702-7340
Facility or well name: WBR Fed #8 API #: 30-025-35849 U/L or Qtr/Qtr M Sec 13 T 22 R 32
County: Lea Latitude 32:23:07.44N Longitude 103:37:59.77W NAD: 1927 ☒ 1983 ☐ Surface Owner Federal ☒ State ☐ Private ☐ Indian ☐

Pit

Type: Drilling ☒ Production ☐ Disposal ☐

Workover ☐ Emergency ☐

Lined ☒ Unlined ☐

Liner type: Synthetic ☒ Thickness 12 mil Clay ☐ Volume 16000 bbl

Below-grade tank

Volume: _____ bbl Type of fluid: _____

Construction material: _____

Double-walled, with leak detection? Yes ☐ If not, explain why not. _____

Depth to ground water (vertical distance from bottom of pit to seasonal high water elevation of ground water.)

Less than 50 feet	(20 points)
50 feet or more, but less than 100 feet	(10 points)
100 feet or more	(0 points)

Wellhead protection area: (Less than 200 feet from a private domestic water source, or less than 1000 feet from all other water sources.)

Yes	(20 points)
No	(0 points)

Distance to surface water: (horizontal distance to all wetlands, playas, irrigation canals, ditches, and perennial and ephemeral watercourses.)

Less than 200 feet	(20 points)
200 feet or more, but less than 1000 feet	(10 points)
1000 feet or more	(0 points)

Ranking Score (Total Points)

0

If this is a pit closure: (1) attach a diagram of the facility showing the pit's relationship to other equipment and tanks. (2) Indicate disposal location:

onsite ☐ offsite ☐ If offsite, name of facility _____ (3) Attach a general description of remedial action taken including remediation start date and end date. (4) Groundwater encountered: No ☐ Yes ☐ If yes, show depth below ground surface _____ ft. and attach sample results. (5) Attach soil sample results and a diagram of sample locations and excavations.

I hereby certify that the information above is true and complete to the best of my knowledge and belief. I further certify that the above-described pit or below-grade tank has been/will be constructed or closed according to NMOCD guidelines ☒ a general permit ☐, or an (attached) alternative OCD-approved plan ☐.

Date: 12/16/04

Printed Name/Title Cathy Wright, Sr Eng Tech

Signature

Your certification and NMOCD approval of this application/closure does not relieve the operator of liability should the contents of the pit or tank contaminate ground water or otherwise endanger public health or the environment. Nor does it relieve the operator of its responsibility for compliance with any other federal, state, or local laws and/or regulations.

Approval:

Date:

Printed Name/Title

DEC 16 2004

Signature

PETROLEUM ENGINEER

Ground-water levels for New Mexico

Search Results -- 1 sites found

Search Criteria

site_no list = • 322314103384301

Save file of selected sites to local disk for future upload

USGS 322314103384301 22S.32E.14.32322

Available data for this site

Ground-water: Levels



Lea County, New Mexico
Hydrologic Unit Code
Latitude 32°23'14", Longitude 103°38'43" NAD27
Gage datum 3,717.00 feet above sea level NGVD29
The depth of the well is 435 feet below land surface.
This well is completed in SANTA ROSA SANDSTONE (231SNRS)

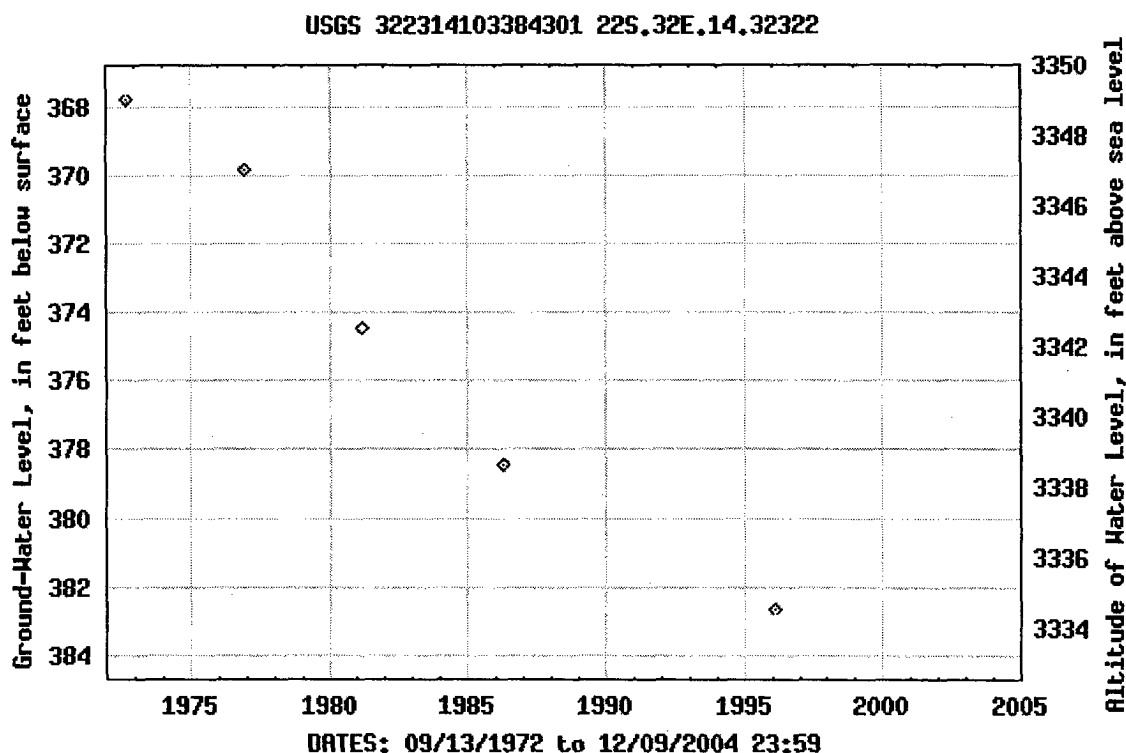
Output formats

[Table of data](#)

[Tab-separated data](#)

[Graph of data](#)

[Reselect period](#)



Breaks in the plot represent a gap of at least one calendar year between two consecutive points.

[Download a presentation-quality graph](#)

Questions about data [New Mexico NWISWeb Data Inquiries](#)

Feedback on this website [New Mexico NWISWeb Maintainer](#)

Ground water for New Mexico: Water Levels

<http://waterdata.usgs.gov/nm/nwis/gwlevels?>

[Top](#)
[Explanation of terms](#)

Retrieved on 2004-12-09 10:15:14 EST

Department of the Interior, U.S. Geological Survey

USGS Water Resources of New Mexico

[Privacy Statement](#) || [Disclaimer](#) || [Accessibility](#) || [FOIA](#)

2.02 1.48 nadww01



Water Resources

Data Category:

Site Information

Geographic Area:

New Mexico

go



This server(nwis.waterdata.usgs.gov) is currently experiencing network and database connectivity problems which prevent Real-Time data from being updated. We are actively working on resolving this issue.

All real-time data continues to be available at <http://waterdata.usgs.gov/nwis/rt>.

Site Map for New Mexico

USGS 322314103384301 22S.32E.14.32322

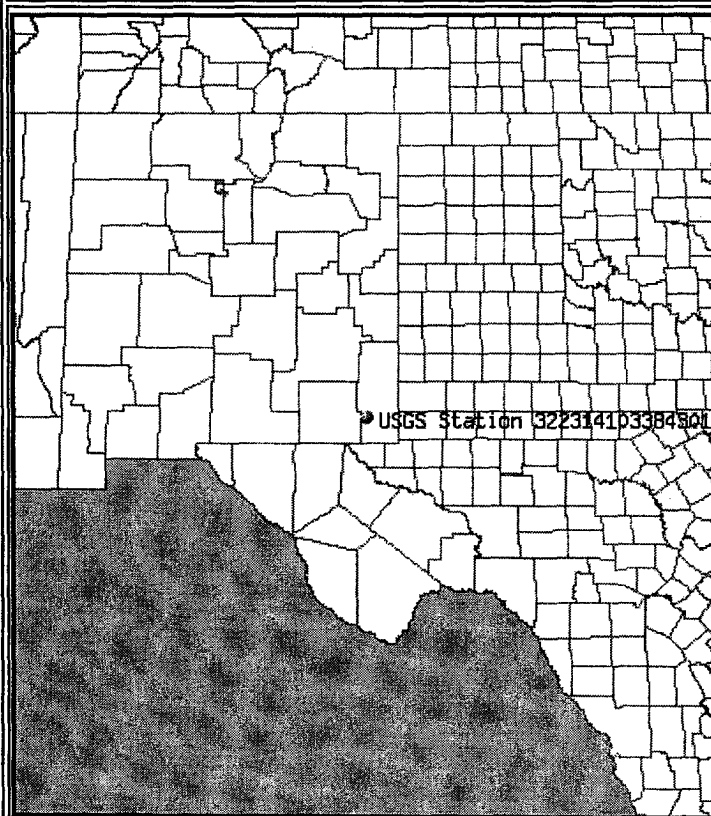
Available data for this site

site map

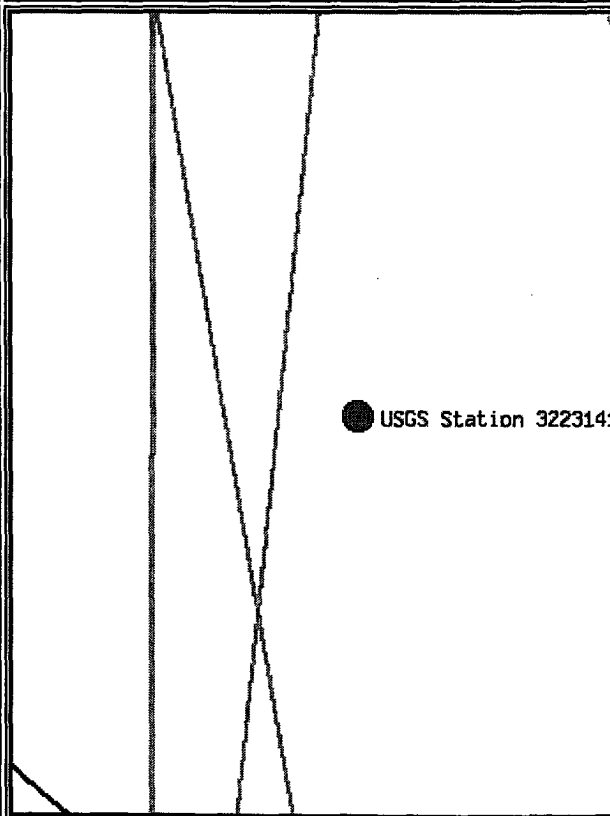
GO

Lea County, New Mexico
Hydrologic Unit Code
Latitude 32°23'14", Longitude 103°38'43" NAD27
Gage datum 3,717.00 feet above sea level NGVD29

Location of the site in New Mexico.



Site map.



Great Circle Calculator.

By Ed Williams

You need Javascript enabled if you want this page to do anything useful! For Netscape, it's under Options/Network Preferences/Languages.

Compute true course and distance between points.

Enter lat/lon of points, select distance units and earth model and click "compute". Lat/lons may be entered in DD.DD, DD:MM.MM or DD:MM:SS.SS formats.

Note that if either point is very close to a pole, the course may be inaccurate, because of its extreme sensitivity to position and inevitable rounding error.

Input Data

Lat1		Lon1	
32:23:14	N	103:38:43	W
Lat2		Lon2	
32:23:07.44	N	103:37:59.77	W

Output

Course 1-2	Course 2-1	Distance
100.183959	280.190391	0.618175898

Distance Units: Earth model:

Compute lat/lon given radial and distance from a known point

Enter lat/lon of initial point, true course and distance. Select distance units and earth model and click "compute". Lat/lons may be entered in DD.DD, DD:MM.MM or DD:MM:SS.SS formats.

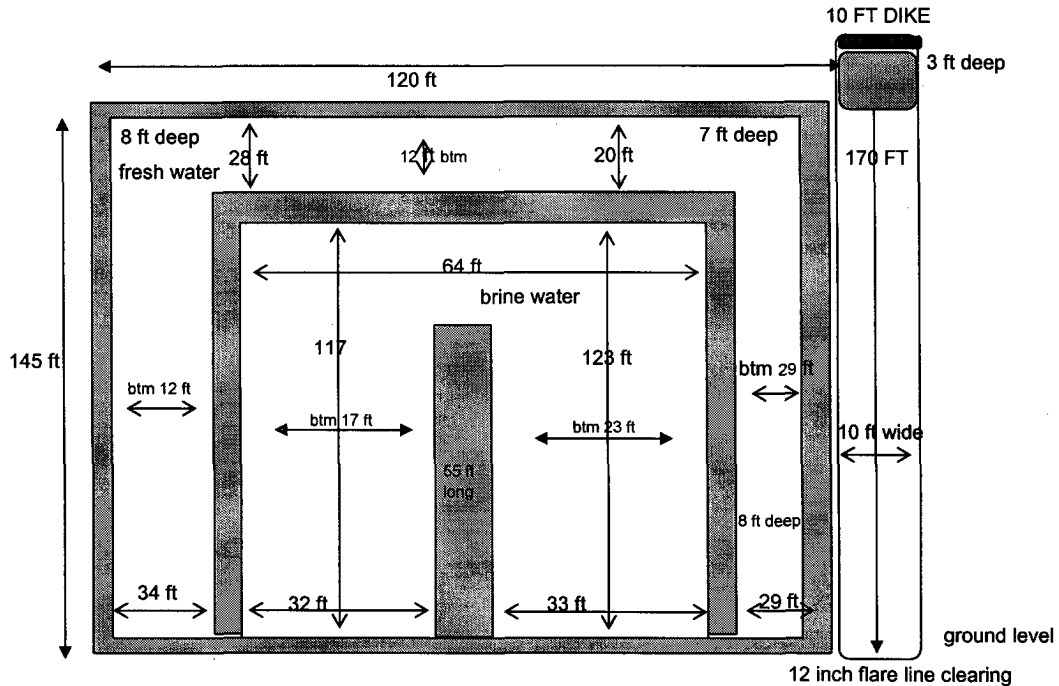
Note that the starting point cannot be a pole.

Input data

Lat1		Lon1	
0:00.00	N	0:00.00	W
Course 1-2		Distance 1-2	

**POGO Producing Company
WBR Federal #8
Approximate Pit Dimensions**

M/13/22S/32E, Lea County, New Mexico
API # 30 025 35819



PIT NOTES:

Pit will be lined with 12 mil Black plastic w/ UV protection.
Pit walls are 6 ft to 8 ft wide.
Pit is 8 ft deep below ground level plus 2 ft walls
Pit walls are 2 ft above ground level.
Caliches mined from pit used to make Well Pad.
Fresh Water volume to ground level = \pm 7950 bbls
Brine Water volume to ground level = \pm 7730 bbls
12 inch Flare line laid on gradual descending graded ROW away from rig to avoid fluid trapping
Fresh water well = (Nad 27) 32° 23' 14" N & 103° 38' 43" W "Published data"
This well produces from a depth greater than 100 ft.

Pit equals approx 16000 bbls