

Form 3160-3  
(July 1989)  
(formerly 9-331C)

UNITED STATES  
DEPARTMENT OF THE INTERIOR  
BUREAU OF LAND MANAGEMENT

N.M. OIL CONS. COMMISSION  
P.O. BOX 1890  
HOBBS, NM 88240

CONTACT RECEIVED  
NOTIFICATION  
OF COPIES REQUIRED  
(Other instructions on  
reverse side)

BLM Roswell District  
Modified Form No.  
NM080-3160-2

30-025-32088

APPLICATION FOR PERMIT TO DRILL, DEEPEN, OR PLUG BACK

1a. TYPE OF WORK DRILL <input checked="" type="checkbox"/> DEEPEN <input type="checkbox"/> PLUG BACK <input type="checkbox"/>		5. LEASE DESIGNATION AND SERIAL NO. LC-067968	
b. TYPE OF WELL OIL WELL <input checked="" type="checkbox"/> GAS WELL <input type="checkbox"/> OTHER <input type="checkbox"/>		6. IF INDIAN, ALLOTTEE OR TRIBE NAME	
2. NAME OF OPERATOR TEXACO EXPLORATION AND PRODUCTION INC.		7. UNIT AGREEMENT NAME WEST DOLLARHIDE DRINKARD Unit	
3a. ADDRESS OF OPERATOR P. O. Box 3109, Midland, Texas 79702		8. FARM OR LEASE NAME	
4. LOCATION OF WELL (Report location clearly and in accordance with any State requirements.) At surface 1125' FSL, 2450' FEL, UNIT LETTER O, SW/SE At proposed prod. zone SAME		9. WELL NO. 137	
14. DISTANCE IN MILES AND DIRECTION FROM NEAREST TOWN OR POST OFFICE* 7 MILES NORTHEAST OF JAL, NM.		10. FIELD AND POOL, OR WILDCAT DOLLARHIDE TUBB DRINKARD	
15. DISTANCE FROM PROPOSED* LOCATION TO NEAREST PROPERTY OR LEASE LINE, FT. (Also to nearest drg. unit line, if any) 1147'		11. SEC., T., R., M., OR BLK. AND SURVEY OR AREA SEC. 19, T-24-S, R-38-E	
16. NO. OF ACRES IN LEASE 3533.52		12. COUNTY OR PARISH LEA	
17. NO. OF ACRES ASSIGNED TO THIS WELL 40		13. STATE NM	
18. DISTANCE FROM PROPOSED LOCATION* TO NEAREST WELL, DRILLING, COMPLETED, OR APPLIED FOR, ON THIS LEASE, FT. 706'		20. ROTARY OR CABLE TOOLS ROTARY	
21. ELEVATIONS (Show Whether DF, RT, GR, ETC.) GR-3166'		22. APPROX. DATE WORK WILL START* 07-5-93	

PROPOSED CASING AND CEMENTING PROGRAM						
HOLE SIZE	CASING SIZE	WEIGHT/FOOT	GRADE	THREAD TYPE	SETTING DEPTH	QUANTITY OF CEMENT
20	16	65#	WC-40	DE	40'	REDI-MIX
14 3/4	11 3/4	42#	WC-40	ST&C	1260'	700 SX
* 11	8 5/8	32#	WC-50 & S-80	LT&C	4200'	1350 SX
7 7/8	5 1/2	17# & 15.5#	WC-50 & L-80	LT&C	7670'	900 SX

\* INTERMEDIATE CASING WILL NOT BE SET IF NO WATER FLOW IS ENCOUNTERED AND PRODUCTION CEMENT WILL BE ADJUSTED.

CEMENT PROGRAM: CONDUCTOR - REDIMIX

SURFACE CSG - 500 SX CLASS C w/ 4% GEL, 2% Cacl2 (13.5ppg, 1.74cf/s, 9.1gw/s). F/B 200 SX CLASS C w/ 2% Cacl2 (14.8ppg, 1.32cf/s, 6.3gw/s).

INTERMEDIATE CSG - 950 SX 35/65 POZ CLASS H w/ 6% GEL, 5% SALT, 1/4# FLOCELE (12.8ppg, 1.94cf/s, 10.4gw/s). F/B 400 SX CLASS H w/ 2% Cacl2 (15.6ppg, 1.19cf/s, 5.2gw/s).

PRODUCTION CSG - 400 SX 35/65 POZ CLASS H w/ 6% GEL, 5% SALT, 1/4# FLOCELE (12.8ppg, 1.94cf/s, 10.4gw/s). (SACKS WILL BE INCREASED TO 2340 IF INTERMEDIATE CSG IS NOT SET.) F/B 500 SACKS CLASS H (15.6ppg, 1.18cf/s, 5.2gw/s).

THERE ARE NO OTHER OPERATORS IN THE 1/4 1/4 SECTION.

UNORTHODOX LOCATION - EXCEPTION HAS BEEN REQUESTED. (COPY ATTACHED).

IN ABOVE SPACE DESCRIBE PROPOSED PROGRAM: If proposal is to deepen or plug back, give data on present productive zone and proposed new productive zone. If proposal is to drill or deepen directionally, give pertinent data on subsurface locations and measured and true vertical depths. Give blowout preventer program, if any.

24.

SIGNED C.P. Basham / cwh TITLE DRILLING OPERATIONS MANAGER DATE 06-07-93

(This space for Federal or State office use)

PERMIT NO. Ren Dunton APPROVAL DATE JUL 1 - 1993

APPROVED BY AREA MANAGER TITLE DATE

CONDITIONS OF APPROVAL, IF ANY:

\*See Instructions On Reverse Side

18 U.S.C. SECTION 1001, makes it a crime for any person knowingly and willfully to make to any department or agency of the United States any false, fictitious or fraudulent statements or representations as to any matter within its jurisdiction.

Submit to Appropriate  
District Office  
State Lease - 4 copies  
Fee Lease - 3 copies

State of New Mexico  
Energy, Minerals and Natural Resources Department

Form C-102  
Revised 1-1-89

**OIL CONSERVATION DIVISION**  
P.O. Box 2088  
Santa Fe, New Mexico 87504-2088

**DISTRICT I**  
P.O. Box 1980, Hobbs, NM 88240

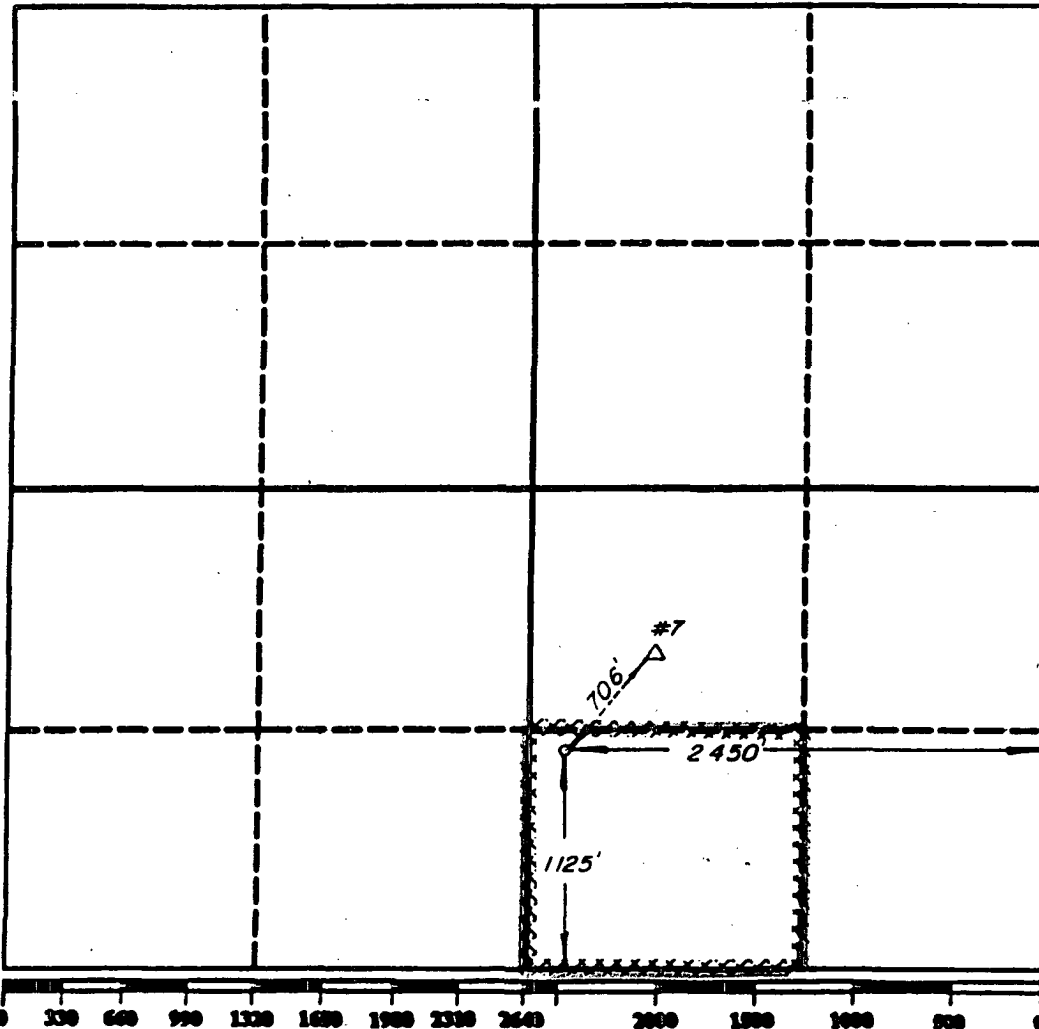
**DISTRICT II**  
P.O. Drawer DD, Artesia, NM 88210

**DISTRICT III**  
1000 Elm Street S.E., Albuquerque, NM 87102

**WELL LOCATION AND ACREAGE DEDICATION PLAT**  
All Distances must be from the outer boundaries of the section.

Operator <b>TEXACO EXPLORATION &amp; PRODUCTION INC.</b>			Lease <b>WEST DOLLARHIDE DRINKARD UNIT</b>		Well No. <b>137</b>
Unit Letter <b>0</b>	Section <b>19</b>	Township <b>24 SOUTH</b>	Range <b>38 EAST</b>	County <b>LEA</b>	
Actual Footage Location of Well: <b>1125</b> feet from the <b>SOUTH</b> line and <b>2450</b> feet from the <b>EAST</b> line					
Ground level Elev. <b>3166'</b>	Producing Formation (ABO & DRINKARD) <b>TUBB DRINKARD</b>		Foot <b>DOLLARHIDE TUBB-DRINKARD</b>		Dedicated Acreage <b>40</b> Acres

- Outline the acreage dedicated to the subject well by colored pencil or ink on the plat below.
- If more than one lease is dedicated to the well, outline each and identify the ownership thereof (both as to working interest and royalty).
- If more than one lease of different ownership is dedicated to the well, have the interest of all owners been consolidated by commutation, unitization, forced-pooling, etc.?  
☐ Yes ☐ No If answer is "yes" type of consolidation: \_\_\_\_\_  
If answer is "no" list the owners and tract descriptions which have actually been consolidated. (Use reverse side of this form if necessary.)  
No allowable will be assigned to the well until all interests have been consolidated (by commutation, unitization, forced-pooling, or otherwise) or until a non-standard unit, eliminating such interest, has been approved by the Division.



**OPERATOR CERTIFICATION**

I hereby certify that the information contained herein is true and complete to the best of my knowledge and belief.

Signature <i>R. D. Mariott</i>
Printed Name <b>R. D. MARIOTT</b>
Position <b>DIVISION SURVEYOR</b>
Company <b>TEXACO EXPLORATION &amp; PRODUCTION INC.</b>
Date <b>May 19, 1993</b>

**SURVEYOR CERTIFICATION**

I hereby certify that the well location shown on this plat was plotted from field notes of actual surveys made by me or under my supervision, and that the same is true and correct to the best of my knowledge and belief.

Date Surveyed <b>May 19, 1993</b>
Signature & Seal of Professional Surveyor <i>Keith B. Deason</i>
Certificate No. <b>4882</b>

NSL-3289

## DRILLING PROGRAM

WEST DOLLARHIDE DRINKARD UNIT No. 137

### **SURFACE DESCRIPTION:**

The land surface in the area of the well site is practically level. Drainage is to the southeast. The top soil is sand. Vegetation consists mainly of shinnery oak, weeds, and range grasses.

**FORMATION TOPS:** Estimated KB Elevation: 3176'

<u>Formation</u>	<u>Depth</u>	<u>Lithology</u>	<u>Fluid Content</u>
Rustler	1260'	Anhy	----
Yates	2750'	Anhy, Dolo	----
Queen	3730'	Sandstone	Oil/Gas/Wtr
Glorieta	5290'	Sandstone, Dolo	----
Tubb	6210'	Sandstone, Dolo	Oil/Gas/Wtr
Drinkard	6650'	Limestone, Dolo	Oil/Gas/Wtr
Abo	6800'	Limestone, Dolo	Oil/Gas/Wtr

The base of the salt section is at 2600'. No abnormal pressures or temperatures are anticipated to be encountered in this well. H<sub>2</sub>S is present in the Queen and Drinkard. H<sub>2</sub>S RADIUS OF EXPOSURE: 100ppm = 24', 500ppm = 11', based on 1,000ppm H<sub>2</sub>S and 100 MCF (see attached H<sub>2</sub>S Drilling Operations Plan. H<sub>2</sub>S equipment to be operational prior to drilling out Surface Casing Shoe.)

### **PRESSURE CONTROL EQUIPMENT:**

A 3000 psi Dual Ram type preventer with rotating head will be used. (See Exhibit C). It will be installed after surface casing is set. BOP will be tested each time it is installed on a casing string and at least every 29 days, and operated at least once each 24-hour period during drilling.

### **CASING AND CEMENT PROGRAM:**

The casing and cementing programs are detailed on Form 3160-3. All casing will be new. Intermediate casing will not be set if no water flow is encountered and production cement will be adjusted.

#### **Centralizer Program:**

Surface Casing - Centralize the bottom 3 joints and every 4th to surface.

Intermediate Casing - Centralize the bottom 3 jts and every other jt from 4200' to 3600'

Production Casing - Centralize every other joint on bottom 1500'.

West Dollarhide Drinkard Unit No. 137

**MUD PROGRAM:**

<u>Depth</u>	<u>Type</u>	<u>Weight</u>	<u>Viscosity</u>
0'-1260'	Fresh Water	8.4	28
1260'-4200'	Brine	10.0	29
4200'-7670'	Brine	10.0	29

**LOGGING, TESTING:**

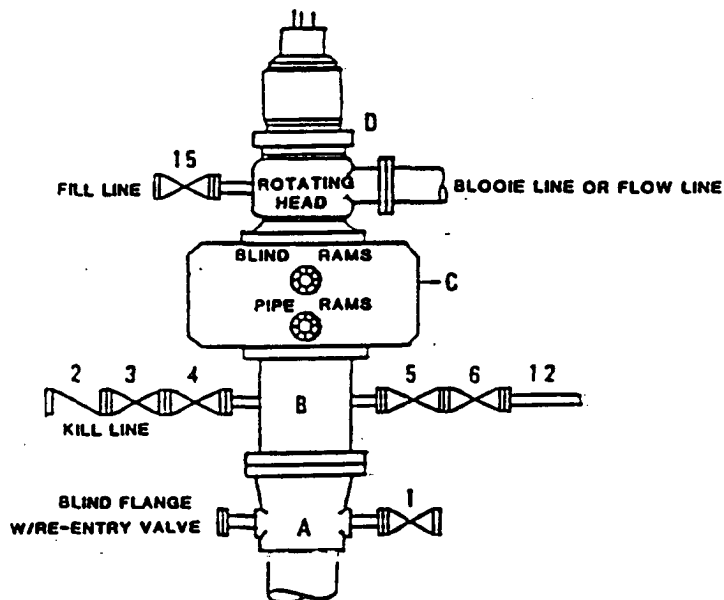
GR-CNL-LDT, GR-DLL-MSFL, and GR-BHC-Sonic surveys will be run.

No Mud Logging Unit will be used.

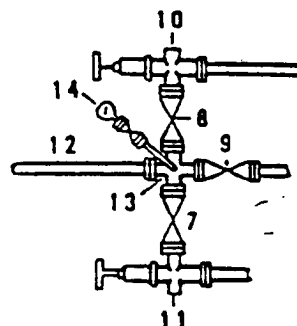
No drill stem tests will be conducted.

Cores will be taken from 6650'-6800' (150') and 6850'-7030' (180').

**DRILLING CONTROL  
CONDITION II-B 3000 WP  
FOR AIR DRILLING OR  
WHERE NITROGEN OR AIR BLOWS ARE EXPECTED**



H<sub>2</sub>S TRIM REQUIRED  
YES ☒ NO ☐



**DRILLING CONTROL**

**MATERIAL LIST - CONDITION II - B**

- |                   |   |
|-------------------|---|
| A                 | Texaco Wellhead   |
| B                 | 3000# W.P. drilling spool with a 2" minimum flanged outlet for kill line and 3" minimum flanged outlet for choke line.  |
| C                 | 3000# W.P. Dual ram type preventer, hydraulic operated with 1" steel, 3000# W.P. control lines (where sub-structure height is adequate, 2 - 3000# W.P. single ram type preventers may be utilized). |
| D                 | Rotating Head with fill up outlet and extended Blooie Line.   |
| 1, 3, 4,<br>7, 8, | 2" minimum 3000# W.P. flanged full opening steel gate valve, or Halliburton Lo Torc Plug valve.   |
| 2                 | 2" minimum 3000# W.P. back pressure valve.  |
| 5, 6, 9           | 3" minimum 3000# W.P. flanged full opening steel gate valve, or Halliburton Lo Torc Plug valve.   |
| 12                | 3" minimum schedule 80, Grade "B", seamless line pipe.  |
| 13                | 2" minimum x 3" minimum 3000# W.P. flanged cross.   |
| 10, 11            | 2" minimum 3000# W.P. adjustable choke bodies.  |
| 14                | Cameron Mud Gauge or equivalent ( location optional in choke line).   |
| 15                | 2" minimum 3000# W.P. flanged or threaded full opening steel gate valve, or Halliburton Lo Torc Plug valve.   |



TEXACO, INC.  
MIDLAND DIVISION  
MIDLAND, TEXAS



SCALE	DATE	EST. NO.	ORG. NO.
DRAWN BY			
CHECKED BY			
APPROVED BY			

EXHIBIT C