

DISTRICT I
P.O. Box 1980, Hobbs, NM 88240

DISTRICT II
P.O. Drawer DD, Artesia, NM 88210

DISTRICT III
1000 Rio Brazos Rd., Aztec, NM 87410

OIL CONSERVATION DIVISION

P.O. Box 2088
Santa Fe, New Mexico 87504-2088

WELL API NO.

30-025-12228

5. Indicate Type of Lease

STATE ☒ FEE ☐

6. State Oil & Gas Lease No.

B-1732

7. Lease Name or Unit Agreement Name

WEST DOLLARHIDE DRINKARD UNIT

8. Well No.

38

9. Pool name or Wildcat

DOLLARHIDE TUBB/DRINKARD

SUNDRY NOTICES AND REPORTS ON WELLS

(DO NOT USE THIS FORM FOR PROPOSALS TO DRILL OR TO DEEPEN OR PLUG BACK TO A
DIFFERENT RESERVOIR. USE "APPLICATION FOR PERMIT"
(FORM C-101) FOR SUCH PROPOSALS.)

1. Type of Well:

OIL
WELL ☒

GAS
WELL ☐

OTHER

2. Name of Operator

Texaco Exploration and Production Inc.

3. Address of Operator

P. O. Box 730 Hobbs, NM 88240

4. Well Location

Unit Letter M : 660 Feet From The SOUTH Line and 660 Feet From The WEST Line
County

Section 28

Township 24-S

Range 38-E

NMPM

LEA

10. Elevation (Show whether DF, RKB, RT, GR, etc.)

3210' GL, KB=14'

11.

Check Appropriate Box to Indicate Nature of Notice, Report, or Other Data

NOTICE OF INTENTION TO:

PERFORM REMEDIAL WORK ☐

PLUG AND ABANDON ☒

TEMPORARILY ABANDON ☐

CHANGE PLANS ☐

PULL OR ALTER CASING ☐

OTHER: ☐

SUBSEQUENT REPORT OF:

REMEDIAL WORK ☐ ALTERING CASING ☐

COMMENCE DRILLING OPNS. ☐ PLUG AND ABANDONMENT ☐

CASING TEST AND CEMENT JOB ☐

OTHER: ☐

12. Describe Proposed or Completed Operations (Clearly state all pertinent details, and give pertinent dates, including estimated date of starting any proposed work) SEE RULE 1103.

- 1) Inform NMOCD 24 hours prior to commencement of plugging.
- 2) TIH with bit and collars. Drill out CIBP @ 6600' (PBSD is 6578').
- 3) Clean hole to TD. POH: Run casing inspection log from TD to about 5500'.
- 4) GIH with 5" retainer and set at 6350'. Circulate casing with 10# mud.
- 5) Squeeze liner perms with 100 sx class "C" cement. Spot 50' cement on top.
- 6) Locate holes and/or water flows above Drinkard with log/packer. If necessary, set CIBP @ 4000' (base of Queen). Pump 25 sx from 4000'-3700'.
- 7) Pump 25 sx from 2800'-2500' across base of salt section.
Pump 25 sx from 1300'-1000' across top of salt section.
Pump 30 sx from 350' to the surface.
- 8) Refill casing annulus from surface with 1" tubing if necessary.
- 9) Cut off wellhead and install marker. Clean location and restore surface.

I hereby certify that the information above is true and complete to the best of my knowledge and belief.

SIGNATURE

TITLE

Production Engineer

DATE

12-28-93

TYPE OR PRINT NAME

Robert McNaughton

TELEPHONE NO. 397-0428

(This space for State Use)

ORIGINAL SIGNED BY JERRY SEXTON

APPROVED BY

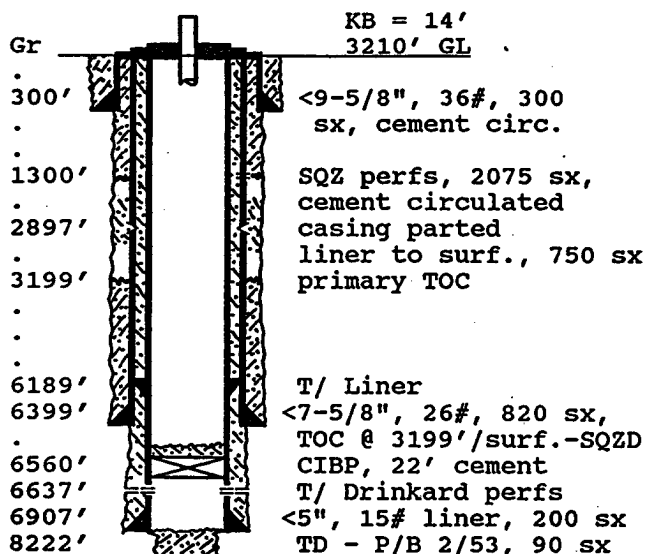
DISTRICT I SUPERVISOR

TITLE

DATE

DEC 30 1993

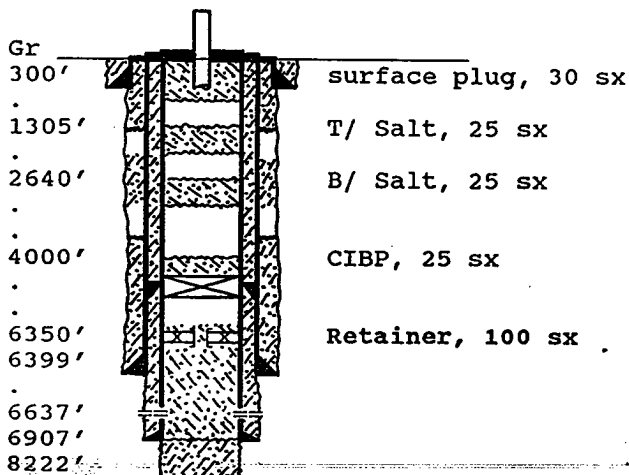
CONDITIONS OF APPROVAL, IF ANY:

OPERATOR: Texaco Exploration & Production Inc WELL: West Dollarhide Drinkard Unit #38FOOTAGE LOCATION: 660 FSL, 660 FWL Sec./Twn/Rng: Unit M, Sec 28, T-24-S, R-38-EFormer Gulf Oil Co. - W.A. Ramsey NCT-D #1Lea County, New MexicoSCHEMATIC

Tops:
Salt 1305'-2640'
Queen 3780'
Tubb 6334'
Drinkard 6538'
Abo 6820'

TABULAR DATA

Surface Casing: Set at: 300'
Size 9-5/8", 36# Cemented with 300 sx.
TOC surface ' determined by circulated
Hole Size 12-1/4" Comp. Date 10-30-52
Production casing: Set at: 6399'
Size 7-5/8", 26# Cemented with 2895 sx.
TOC surface ' determined by circulated
Hole Size 8-3/4", Annulus Sqzd w/ 2075 sx
Production liner: Set at: 6907'
Size 5", 15# Cemented with 200 + 750sx.
TOC surface ' determined by squeezed
Hole Size Tie-back liner run to surf., 8/86
Producing Interval:
6637' to 6781' through: Perforations
** SOZD perfs from 6582-6586'

Recommended Plug and AbandonmentPO-113
(12/93)OPERATOR: Texaco Exploration & Production Inc. WELL: West Dollarhide Drinkard Unit #38FOOTAGE LOCATION: 660 FSL, 660 FWL Sec./Twn/Rng: Unit M, Sec. 28, T-24-S, R-38-ELast production: 2/87.Lea County, New MexicoSCHEMATICTABULAR DATA

Surface Plug:
Size 350'-surface Cemented with 30 sx.
1300'-1000' 25
2800'-2500' 25
class "C" cement, 1.32 ft³/sx
Intermediate Plugs:
Size CIBP Cemented with 25 sx.
(4000'-3700')
Producing Zone Plugs:
Size Retainer Cemented with 100 sx.

RECEIVED

CD HOEBS
OFFICE