

District I  
1625 N. French Dr., Hobbs, NM 88240  
District II  
1301 W. Grand Avenue, Artesia, NM 88210  
District III  
1000 Rio Brazos Road, Aztec, NM 87410  
District IV  
1220 S. St. Francis Dr., Santa Fe, NM 87505

State of New Mexico  
Energy Minerals and Natural Resources

Oil Conservation Division  
1220 South St. Francis Dr.  
Santa Fe, NM 87505

Form C-101  
March 4, 2004

Submit to appropriate District Office  
State Lease - 6 Copies  
Fee Lease - 5 Copies

☐ AMENDED REPORT

**APPLICATION FOR PERMIT TO DRILL, RE-ENTER, DEEPEN, PLUGBACK, OR ADD A ZONE**

<sup>1</sup> Operator Name and Address Yates Petroleum Corporation 105 South Fourth Street Artesia, NM 88210		<sup>2</sup> OGRID Number 025575 API Number <b>30-025-37037</b>
<sup>3</sup> Property Code 12519	<sup>5</sup> Property Name Lotus ALT State	<sup>6</sup> Well No. 006

**7 Surface Location**

UL or lot no.	Section	Township	Range	Lot Idn	Feet from the	North/South line	Feet from the	East/West line	County
F	32	22S	32E		1650	North	1650	West	Lea

**8 Proposed Bottom Hole Location If Different From Surface**

UL or lot no.	Section	Township	Range	Lot Idn	Feet from the	North/South line	Feet from the	East/West line	County
<sup>9</sup> Proposed Pool 1 Livingston Ridge; Delaware, SE 39380						<sup>10</sup> Proposed Pool 2			

**Drilling Pit Location and Other Information**

UL or lot no.	Section	Township	Range	Lot Idn	Feet from the	North/South line	Feet from the	East/West line	County
F	32	22S	32E		1650	North	1650	West	Lea
Depth to ground water 250' +				Distance from nearest fresh water well 1 mile +			Distance from nearest surface water 1 mile +		
<sup>11</sup> Work Type Code N		<sup>12</sup> Well Type Code G		<sup>13</sup> Cable/Rotary Rotary		<sup>14</sup> Lease Type Code S		<sup>15</sup> Ground Level Elevation 3536'	
<sup>16</sup> Multiple No		<sup>17</sup> Proposed Depth 8600'		<sup>18</sup> Formation Delaware		<sup>19</sup> Contractor		<sup>20</sup> Spud Date ASAP	

**21 Proposed Casing and Cement Program**

Hole Size	Casing Size	Casing weight/foot	Setting Depth	Sacks of Cement	Estimated TOC
17.5"	13.375	48	850	450	0
11"	8.635	32	4500	1400	0
7.875"	5.5	17	8600	950	0

22 Describe the proposed program. If this application is to DEEPEN or PLUG BACK, give the data on the present productive zone and proposed new productive zone. Describe the blowout prevention program, if any. Use additional sheets if necessary.

Yates Petroleum Corporation proposes to drill and test the Delaware and intermediate formations. Approximately 850' of surface casing will be set and cement circulated. Approx. 4500' of intermediate casing will be set/cement circulated. If commercial, production casing will be run and cemented, will perforate and stimulate as needed for production.

**Mud Program: 0-850' FW/Native Mud; 850'-4500' Brine; 4500'-6800' Cut Brine; 6800'-TD cut Brine/Starch.**

**BOPE Program: A 3000# BOPE will be installed.**

**Permit Expires 1 Year From Approval**

<sup>23</sup> I hereby certify that the information given above is true and complete to the best of my knowledge and belief. I further certify that the drilling pit will be constructed according to NMOCD guidelines ☐, a general permit ☒, or an (attached) alternative OCD-approved plan ☐.

Signature:

*Debbie L. Caffall*

Printed name: Debbie L. Caffall

Title: Regulatory Technician

E-mail Address: debbiec@ypcn.com

Date: January 5, 2005

Phone: (505) 748-4347

**Oil Conservation Division**

Approved by:

*Paul J. Hardy*  
Title: PETROLEUM ENGINEER

Approval Date:

Expiration Date:

Conditions of Approval:

Attached **JAN 12 2005**

Previously Approved

C144 attached

Artesia, NM 88210

DISTRICT III

Rio Brazos Rd., Aztec, NM 87410

DISTRICT IV

2040 South Pacheco, Santa Fe, NM 87505

## OIL CONSERVATION DIVISION

P.O. Box 2088

Santa Fe, New Mexico 87504-2088

☐ AMENDED REPORT

## WELL LOCATION AND ACREAGE DEDICATION PLAT

API Number <b>30-025-37037</b>		Pool Code 39380	Pool Name SE Livingston Ridge Delaware	
Property Code 12519	Property Name LOTUS "ALT" STATE			Well Number 6
OGRID No. 025575	Operator Name YATES PETROLEUM CORPORATION			Elevation 3536

## Surface Location

UL or lot No.	Section	Township	Range	Lot Idn	Feet from the	North/South line	Feet from the	East/West line	County
F	32	22S	32E		1650	NORTH	1650	WEST	LEA

## Bottom Hole Location If Different From Surface

UL or lot No.	Section	Township	Range	Lot Idn	Feet from the	North/South line	Feet from the	East/West line	County

Dedicated Acres	Joint or Infill	Consolidation Code	Order No.
40			

NO ALLOWABLE WILL BE ASSIGNED TO THIS COMPLETION UNTIL ALL INTERESTS HAVE BEEN CONSOLIDATED  
OR A NON-STANDARD UNIT HAS BEEN APPROVED BY THE DIVISION

## OPERATOR CERTIFICATION

I hereby certify the the information  
contained herein is true and complete to the  
best of my knowledge and belief.

Signature

Cy Cowan

Printed Name

Regulatory Agent

Title

January 28, 2003

Date

## SURVEYOR CERTIFICATION

I hereby certify that the well location shown  
on this plat was plotted from field notes of  
actual surveys made by me or under my  
supervision and that the same is true and  
correct to the best of my belief.

1/23/2003

Date Surveyed

Signature & Seal of  
Professional Surveyor

Certificate No. Herschel L. Jones RLS 3640

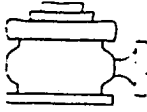
GENERAL SURVEYING COMPANY

1650'

1650'

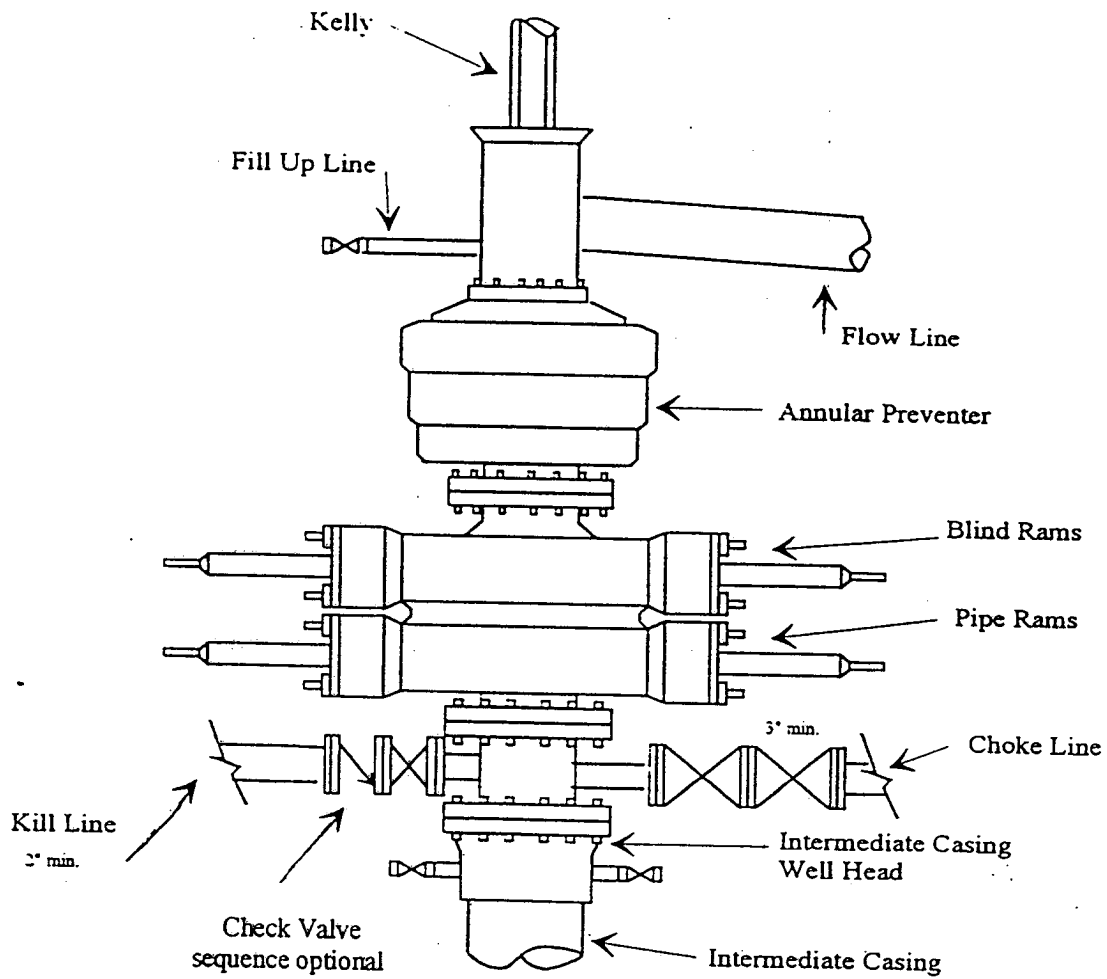
V-2443

N.32°21'02.8"  
W.103°41'59.9"

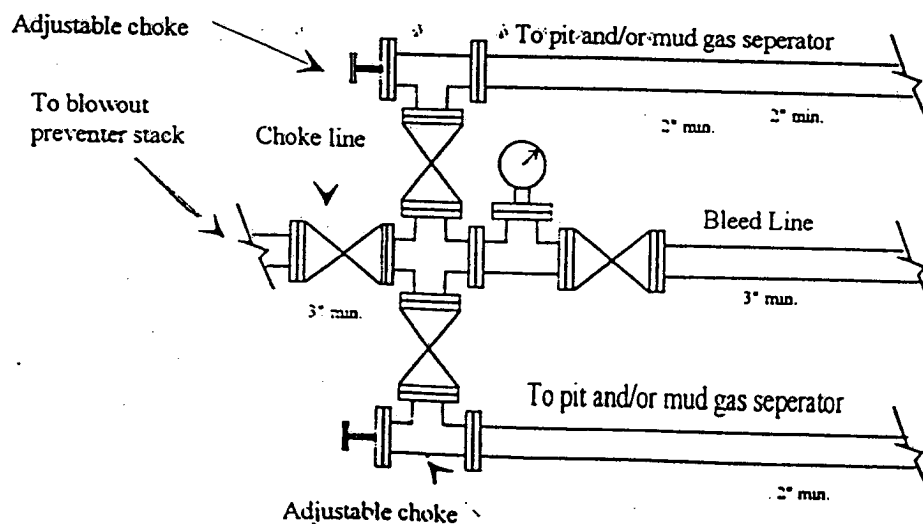


**Yates Petroleum Corporation**  
Typical 3,000 psi Pressure System  
Schematic  
Annular with Double Ram Preventer Stack

BOP-3



Typical 3,000 psi choke manifold assembly with at least these minimum features



District I  
1625 N. French Dr., Hobbs, NM 88240  
District II  
1301 W. Grand Avenue, Artesia, NM 88210  
District III  
1000 Rio Brazos Road, Aztec, NM 87410  
District IV  
1220 S. St. Francis Dr., Santa Fe, NM 87505

State of New Mexico  
Energy Minerals and Natural Resources

Oil Conservation Division  
1220 South St. Francis Dr.  
Santa Fe, NM 87505

Form C-144  
March 12, 2004

For drilling and production facilities, submit to appropriate NMOCD District Office.  
For downstream facilities, submit to Santa Fe office

**Pit or Below-Grade Tank Registration or Closure**

Is pit or below-grade tank covered by a "general plan"? Yes xx No ☐

Type of action: Registration of a pit or below-grade tank ☒ Closure of a pit or below-grade tank ☐

Operator: Yates Petroleum Corporation Telephone: (505) 748-4347 e-mail address: debbiec@ypcnm.com  
Address: 105 South Fouth Street, Artesia, New Mexico  
Facility or well name: Lotus ALT State #6 API #: 30-025-37037 U/L or Qtr/Qtr F Sec 32 T 22S R 32E  
County: Lea Latitude N32.3508 Longitude W103.7000 NAD: 1927 ☐ 1983 ☒ Surface Owner - Federal ☐ State ☒ Private ☐ Indian ☐

**Pit**

Type: Drilling ☒ Production ☐ Disposal ☐  
Workover ☐ Emergency ☐  
Lined ☒ Unlined ☐  
Liner type: Synthetic ☒ Thickness 12 mil  
Clay ☐ Volume 24,000 bbl

**Below-grade tank**

Volume: \_\_\_\_\_ bbl Type of fluid: \_\_\_\_\_  
Construction material: \_\_\_\_\_  
Double-walled, with leak detection? Yes ☐ If not, explain why not.  
\_\_\_\_\_

Depth to ground water (vertical distance from bottom of pit to seasonal high water elevation of ground water.)

Less than 50 feet	(20 points)
50 feet or more, but less than 100 feet	(10 points)
<b>100 feet or more</b>	<b>( 0 points)</b>

Wellhead protection area: (Less than 200 feet from a private domestic water source, or less than 1000 feet from all other water sources.)

Yes	(20 points)
<b>No</b>	<b>( 0 points)</b>

Distance to surface water: (horizontal distance to all wetlands, playas, irrigation canals, ditches, and perennial and ephemeral watercourses.)

Less than 200 feet	(20 points)
200 feet or more, but less than 1000 feet	(10 points)
<b>1000 feet or more</b>	<b>( 0 points)</b>

<b>Ranking Score (Total Points)</b>	<b>0 Points</b>
-------------------------------------	-----------------

**If this is a pit closure:** (1) attach a diagram of the facility showing the pit's relationship to other equipment and tanks. (2) Indicate disposal location: onsite ☐ offsite ☐ If offsite, name of facility \_\_\_\_\_. (3) Attach a general description of remedial action taken including remediation start date and end date. (4) Groundwater encountered: No ☐ Yes ☐ If yes, show depth below ground surface \_\_\_\_\_ ft. and attach sample results. (5) Attach soil sample results and a diagram of sample locations and excavations.

I hereby certify that the information above is true and complete to the best of my knowledge and belief. I further certify that the above-described pit or below-grade tank has been/will be constructed or closed according to NMOCD guidelines ☐, a general permit ☒, or an (attached) alternative OCD-approved plan ☐.

Date: January 5, 2005 Printed Name/Title Debbie L. Caffall / Regulatory Technician Signature Debbie L. Caffall

Your certification and NMOCD approval of this application/closure does not relieve the operator of liability should the contents of the pit or tank contaminate ground water or otherwise endanger public health or the environment. Nor does it relieve the operator of its responsibility for compliance with any other federal, state, or local laws and/or regulations.

Approval:  
Date: JAN 12 2005

Printed Name/Title \_\_\_\_\_ Signature Paul B. Raetz  
PETROLEUM ENGINEER