

## DISTRICT I

P.O. Box 1980, Hobbs, NM 88241-1980

## State of New Mexico

Energy, Minerals and Natural Resources Department

Form C-1C

Revised February 10, 1991

Submit to Appropriate District Office

State Lease - 4 Copies

Fee Lease - 3 Copies

## DISTRICT II

P.O. Drawer DD, Artesia, NM 88211-0719

## OIL CONSERVATION DIVISION

P.O. Box 2088

Santa Fe, New Mexico 87504-2088

## DISTRICT III

1000 Rio Brazos Rd., Aztec, NM 87410

## DISTRICT IV

P.O. Box 2088, Santa Fe, N.M. 87504-2088

## WELL LOCATION AND ACREAGE DEDICATION PLAT

☐ AMENDED REPORT

API Number <u>30-025-36736</u>	Pool Code <u>96601</u>	Pool Name <u>HARE, SAN ANDRES, EAST</u>
Property Code <u>62700</u>	Property Name <u>STATE 10</u>	Well Number <u>3</u>
OGRID No. <u>013300</u>	Operator Name <u>LEWIS B. BURLESON INC.</u>	Elevation <u>3459'</u>

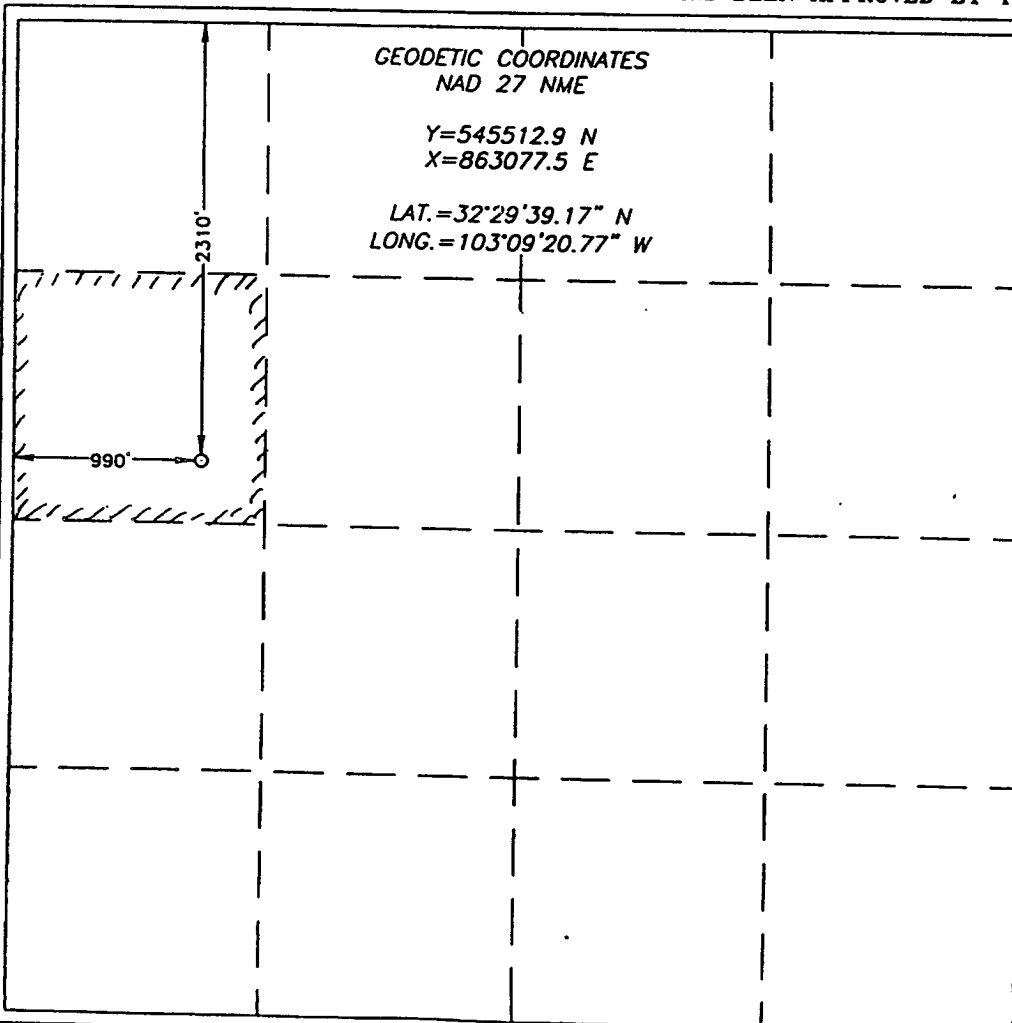
## Surface Location

UL or lot No.	Section	Township	Range	Lot Idn	Feet from the	North/South line	Feet from the	East/West line	County
<u>E</u>	<u>10</u>	<u>21-S</u>	<u>37-E</u>		<u>2310'</u>	<u>NORTH</u>	<u>990'</u>	<u>WEST</u>	<u>LEA</u>

## Bottom Hole Location If Different From Surface

UL or lot No.	Section	Township	Range	Lot Idn	Feet from the	North/South line	Feet from the	East/West line	County
Dedicated Acres	Joint or Infill	Consolidation Code	Order No.						

NO ALLOWABLE WILL BE ASSIGNED TO THIS COMPLETION UNTIL ALL INTERESTS HAVE BEEN CONSOLIDATED  
OR A NON-STANDARD UNIT HAS BEEN APPROVED BY THE DIVISION



## OPERATOR CERTIFICATION

I hereby certify that the information contained herein is true and complete to the best of my knowledge and belief.

[Signature]  
Signature

Steven L. Burleson  
Printed Name

Vice-President  
Title

6/16/2004  
Date

Date

## SURVEYOR CERTIFICATION

I hereby certify that the well location shown on this plat was plotted from field notes of actual surveys made by me or under my supervision, and that the same is true and correct to the best of my belief.

JUNE 4, 2004

Date Surveyed JR

Signature & Seal of Professional Surveyor

[Signature]  
Professional Surveyor  
04.11.0608

Certificate No. CARY KIDSON

12641