

JUN 24 2004

DISTRICT I

1425 N. FRENCH DR., HOBBES, NM 86240

State of New Mexico

Energy, Minerals and Natural Resources Department

DISTRICT II

1301 W. GRAND AVENUE, ARTESIA, NM 86210

DISTRICT III

1000 Rio Brazos Rd., Aztec, NM 87410

DISTRICT IV

1220 S. ST. FRANCIS DR., SANTA FE, NM 87505

OIL CONSERVATION DIVISION

1220 SOUTH ST. FRANCIS DR.
Santa Fe, New Mexico 87505

Form C-102

Revised JUNE 10, 2003

Submit to Appropriate District Office

State Lease - 4 Copies

Fee Lease - 3 Copies

WELL LOCATION AND ACREAGE DEDICATION PLAT

☐ AMENDED REPORT

API Number 30-025-36865	Pool Code 63680	Pool Name Watkins; Yates-7RYS-QN-GB
Property Code 33346	Property Name SOUTHPAW 30 FEDERAL	Well Number 2
OGRID No. 215758	Operator Name PECOS PRODUCTION COMPANY	Elevation 3687'

Surface Location

UL or lot No.	Section	Township	Range	Lot Idn	Feet from the	North/South line	Feet from the	East/West line	County
N	30	18-S	32-E		960'	SOUTH	2100'	WEST	LEA

Bottom Hole Location If Different From Surface

UL or lot No.	Section	Township	Range	Lot Idn	Feet from the	North/South line	Feet from the	East/West line	County
Dedicated Acres 40	Joint or Infill	Consolidation Code	Order No.						

NO ALLOWABLE WILL BE ASSIGNED TO THIS COMPLETION UNTIL ALL INTERESTS HAVE BEEN CONSOLIDATED
OR A NON-STANDARD UNIT HAS BEEN APPROVED BY THE DIVISION

<p>LOT 1</p> <p>41.07 AC LOT 2</p> <p>41.09 AC LOT 3</p> <p>41.11 AC</p> <p>2100'</p> <p>3682.7</p> <p>3689.6</p> <p>600'</p> <p>3678.8</p> <p>3683.8</p> <p>980'</p> <p>No. 2</p> <p>GEODETIC COORDINATES NAD 27 NME Y=623805.7 N X=661872.6 E LAT.=32°42'49.80" N LONG.=103°48'25.34" W</p>	<p>OPERATOR CERTIFICATION</p> <p>I hereby certify the the information contained herein is true and complete to the best of my knowledge and belief.</p> <p><i>Dora Lara</i> Signature</p> <p>Dora Lara Printed Name</p> <p>Engr Asst Title</p> <p>7-7-04 Date</p> <p>SURVEYOR CERTIFICATION</p> <p>I hereby certify that the well location shown on this plat was plotted from field notes of actual surveys made by me or under my supervision, and that the same is true and correct to the best of my belief.</p> <p>JUNE 21, 2004</p> <p>Date Surveyed</p> <p><i>G. E. FIBSON</i> Signature</p> <p>Professional Surveyor</p> <p>NEW MEXICO 04.11.0760</p> <p>Certificate No. CARY-Engr 12841</p>
---	--

ATTACHMENT I

DISTRICT I
1625 N. FRENCH DR., HOBBBS, NM 86240

DISTRICT II
1301 W. GRAND AVENUE, ARTESIA, NM 86210

DISTRICT III
1000 Rio Brazos Rd., Aztec, NM 87410

DISTRICT IV
1220 S. ST. FRANCIS DR., SANTA FE, NM 87505

State of New Mexico

Energy, Minerals and Natural Resources Department

OIL CONSERVATION DIVISION
1220 SOUTH ST. FRANCIS DR.
Santa Fe, New Mexico 87505

Form C-102
Revised JUNE 10, 2003
Submit to Appropriate District Office
State Lease - 4 Copies
Fee Lease - 3 Copies

WELL LOCATION AND ACREAGE DEDICATION PLAT

☐ AMENDED REPORT

API Number 30-025-36865	Pool Code 65550	Pool Name Young; San Andres
Property Code 33346	Property Name SOUTHPAW 30 FEDERAL	Well Number 2
OGED No. 215758	Operator Name PECOS PRODUCTION COMPANY	Elevation 3687'

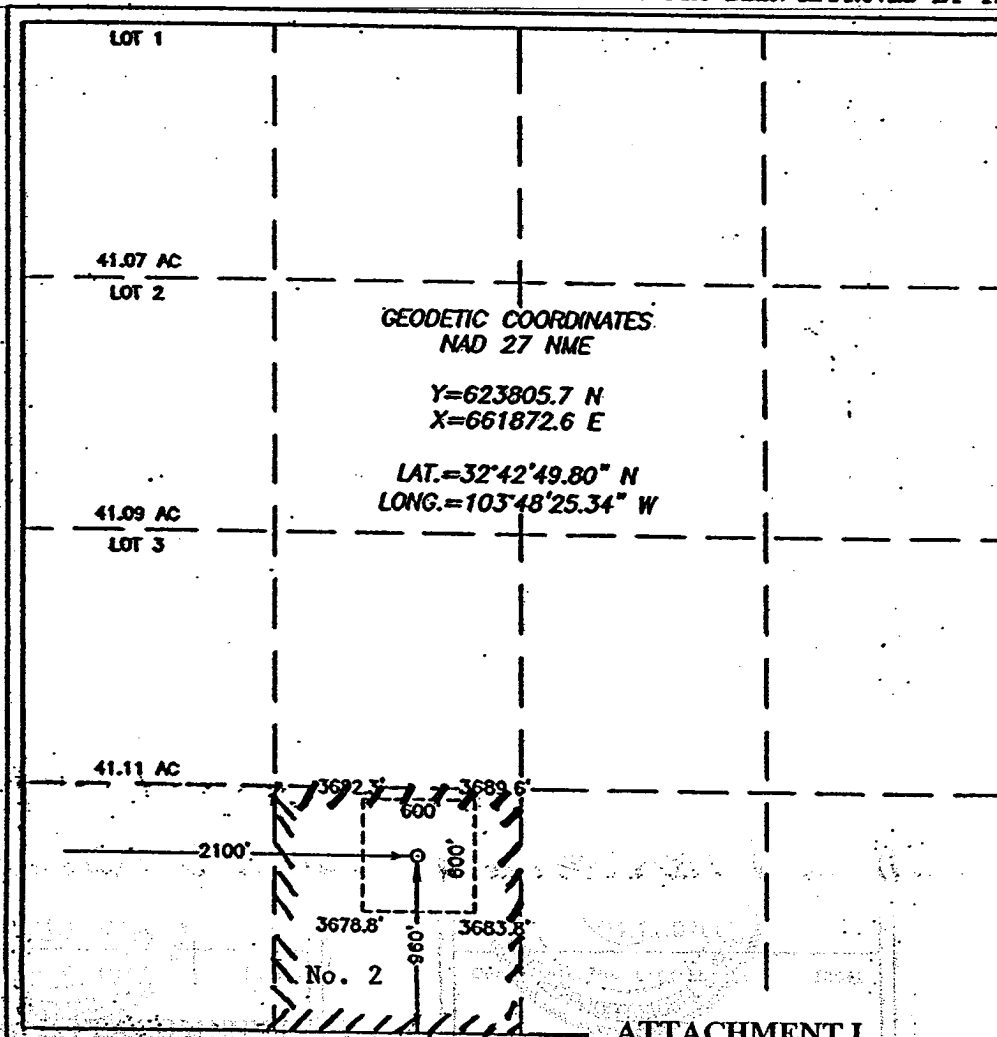
Surface Location

UL or lot No.	Section	Township	Range	Lot Ida	Feet from the	North/South line	Feet from the	East/West line	County
N	30	18-S	32-E		960'	SOUTH	2100'	WEST	LEA

Bottom Hole Location If Different From Surface

UL or lot No.	Section	Township	Range	Lot Ida	Feet from the	North/South line	Feet from the	East/West line	County
Dedicated Acres 40	Joint or Infill	Consolidation Code	Order No.						

NO ALLOWABLE WILL BE ASSIGNED TO THIS COMPLETION UNTIL ALL INTERESTS HAVE BEEN CONSOLIDATED
OR A NON-STANDARD UNIT HAS BEEN APPROVED BY THE DIVISION



ATTACHMENT I

OPERATOR CERTIFICATION

I hereby certify the the information
contained herein is true and complete to the
best of my knowledge and belief.

Dora Lara
Signature

Dora Lara
Printed Name

Engr Asst
Title

7-7-04
Date

SURVEYOR CERTIFICATION

I hereby certify that the well location shown
on this plat was plotted from field notes of
actual surveys made by me or under my
supervision, and that the same is true and
correct to the best of my belief.

JUNE 21, 2004

Date Surveyed
Signature
Professional Surveyor

CARL ELLISON
NEW MEXICO
04.11.0760
Certificate No. CARL ELLISON 12841