

District I
1625 N. French Dr., Hobbs, NM 88240
District II
1301 W. Grand Avenue, Artesia, NM 88210
District III
1000 Rio Brazos Road, Aztec, NM 87410
District IV
1220 S. St. Francis Dr., Santa Fe, NM 87505

State of New Mexico
Energy Minerals and Natural Resources

Form C-101
May 27, 2004

Oil Conservation Division
1220 South St. Francis Dr.
Santa Fe, NM 87505

Submit to appropriate District Office

☐ AMENDED REPORT

APPLICATION FOR PERMIT TO DRILL, RE-ENTER, DEEPEN, PLUGBACK, OR ADD A ZONE

¹ Operator Name and Address POGO PRODUCING COMPANY P.O. BOX 10340 MIDLAND, TEXAS 79702-7340		² OGRID Number 17891
³ Property Code 25919	³ Property Name PLUMA "32" STATE	³ Well No. 2
⁴ Proposed Pool 1 ANDERSON RANCH WOLFCAMP, NORTH (1920)		⁴ Proposed Pool 2

⁷ Surface Location									
UL or lot no.	Section	Township	Range	Lot Idn	Feet from the	North/South line	Feet from the	East/West line	County
C	32	15S	32E		660'	NORTH	1980'	WEST	LEA

⁸ Proposed Bottom Hole Location If Different From Surface									
UL or lot no.	Section	Township	Range	Lot Idn	Feet from the	North/South line	Feet from the	East/West line	County

Additional Well Information				
¹¹ Work Type Code N	¹² Well Type Code O	¹³ Cable/Rotary ROTARY	¹⁴ Lease Type Code S	¹⁵ Ground Level Elevation 4329'
¹⁶ Multiple NO	¹⁷ Proposed Depth 11,000'	¹⁸ Formation WOLFCAMP	¹⁹ Contractor UNKNOWN	²⁰ Spud Date WHEN APPROVED
Depth to Groundwater 190'		Distance from nearest fresh water well 3000'±		
Pit: Liner: Synthetic <input checked="" type="checkbox"/> 12 mils thick Clay <input type="checkbox"/>		Distance from nearest surface water Playa Approximately 400' NE		
Closed-Loop System <input type="checkbox"/>		Drilling Method: Fresh Water <input checked="" type="checkbox"/> Brine <input checked="" type="checkbox"/> Diesel/Oil-based <input type="checkbox"/> Gas/Air <input type="checkbox"/>		

²¹ Proposed Casing and Cement Program					
Hole Size	Casing Size	Casing weight/foot	Setting Depth	Sacks of Cement	Estimated TOC
25"	20"	Conductor	40'	Redi-mix	Surface
17 1/2"	13 3/8"	48#	450'	600 Sx.	Surface
11"	8 5/8"	32#	4200'	1200 Sx.	Surface
7 7/8"	5 1/2"	17 & 15.5#	11,000'	1250 Sx.	Surface

²² Describe the proposed program. If this application is to DEEPEN or PLUG BACK, give the data on the present productive zone and proposed new productive zone. Describe the blowout prevention program, if any. Use additional sheets if necessary.

SEE ATTACHED SHEET

Permit Expires 1 Year From Approval
Date Unless Drilling Underway

²³ I hereby certify that the information given above is true and complete to the best of my knowledge and belief. I further certify that the drilling pit will be constructed according to NMOCD guidelines <input checked="" type="checkbox"/> a general permit <input type="checkbox"/> or an (attached) alternative OCD-approved plan <input type="checkbox"/> .		OIL CONSERVATION DIVISION	
Printed name: Joe T. Janica		Approved by:	
Title: Agent		Title: PETROLEUM ENGINEER	
E-mail Address: 02/22/05		Approval Date: FEB 28 2005	
Date: 02/22/05		Conditions of Approval Attached <input type="checkbox"/>	
Phone: 391-8503			

POGO PRODUCING COMPANY
PLUMA "32" STATE # 2
UNIT "C" SECTION 32
T15S-R32E LEA CO. NM

1. Drill 25" hole to 40'. Set 40' of 20" conductor pipe and cement to surface with Redi-mix.
2. Drill 17½" hole to 450'. Run and set 450' of 13 3/8" 48# H-40 ST&C casing. Cement with 400 Sx. of 65/35/6 Class "C" POZ/GEL, tail in with 200 Sx. of Class "C" cement + ¼# Flocele/Sx, + 2% CaCl, circulate cement to surface.
3. Drill 11" hole to 4200'. Run and set 4200' of 8 5/8" 32# J-55 ST&C casing. Cement with 1000 Sx. of 65/35/6 Class "C" POZ/GEL, + 5% Salt, tail in with 200 Sx. of Class "C" cement + 2% CaCl, circulate cement to surface.
4. Drill 7 7/8" hole to 11,000'. Run and set 11,000' of 5½" 17# & 15.5# J-55 LT&C casing. Cement in 2 stages with DV Tool at 7000'±. Cement 1st stage with 650 Sx. of Class "H" Premium Plus cement + additives, cement 2nd stage with 600 Sx. of Class "C" cement + 8# of Gilsonite /SX. circulate cement to surface.

DISTRICT I
1625 N. FRENCH DR., BOBBS, NM 88240

State of New Mexico

Energy, Minerals and Natural Resources Department

DISTRICT II
1301 W. GRAND AVENUE, ARTESIA, NM 88210

DISTRICT III
1000 Rio Brazos Rd., Aztec, NM 87410

OIL CONSERVATION DIVISION
1220 SOUTH ST. FRANCIS DR.
Santa Fe, New Mexico 87505

Form C-102
Revised JUNE 10, 2003
Submit to Appropriate District Office
State Lease - 4 Copies
Fee Lease - 3 Copies

DISTRICT IV
1220 S. ST. FRANCIS DR., SANTA FE, NM 87505

WELL LOCATION AND ACREAGE DEDICATION PLAT

☐ AMENDED REPORT

API Number 30-025-37098	Pool Code 1920	Pool Name ANDERSON RANCH WOLFCAMP, NORTH
Property Code 25919	Property Name PLUMA 32 STATE	Well Number 2
OGRID No. 17891	Operator Name POGO PRODUCING COMPANY	Elevation 4329'

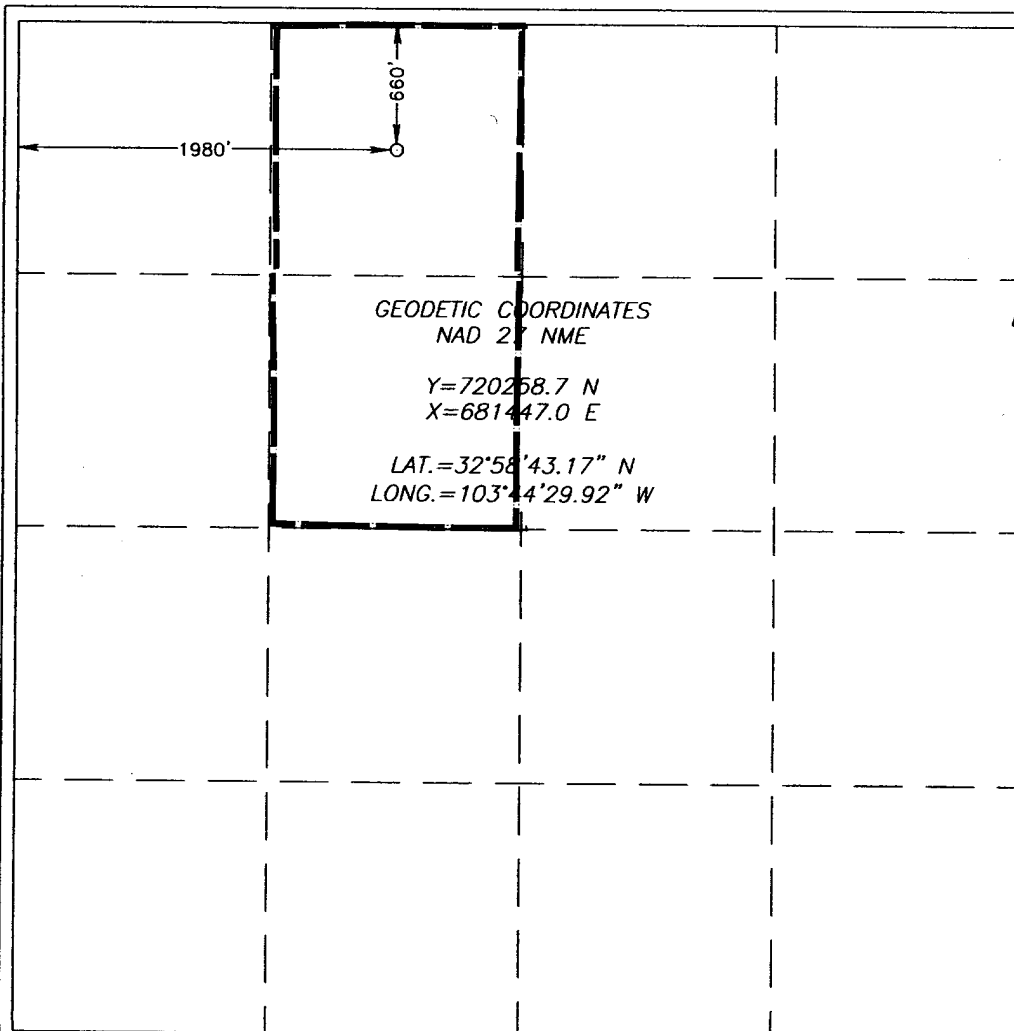
Surface Location

UL or lot No. C	Section 32	Township 15-S	Range 32-E	Lot Idn	Feet from the 660	North/South line NORTH	Feet from the 1980	East/West line WEST	County LEA
---------------------------	----------------------	-------------------------	----------------------	---------	-----------------------------	----------------------------------	------------------------------	-------------------------------	----------------------

Bottom Hole Location If Different From Surface

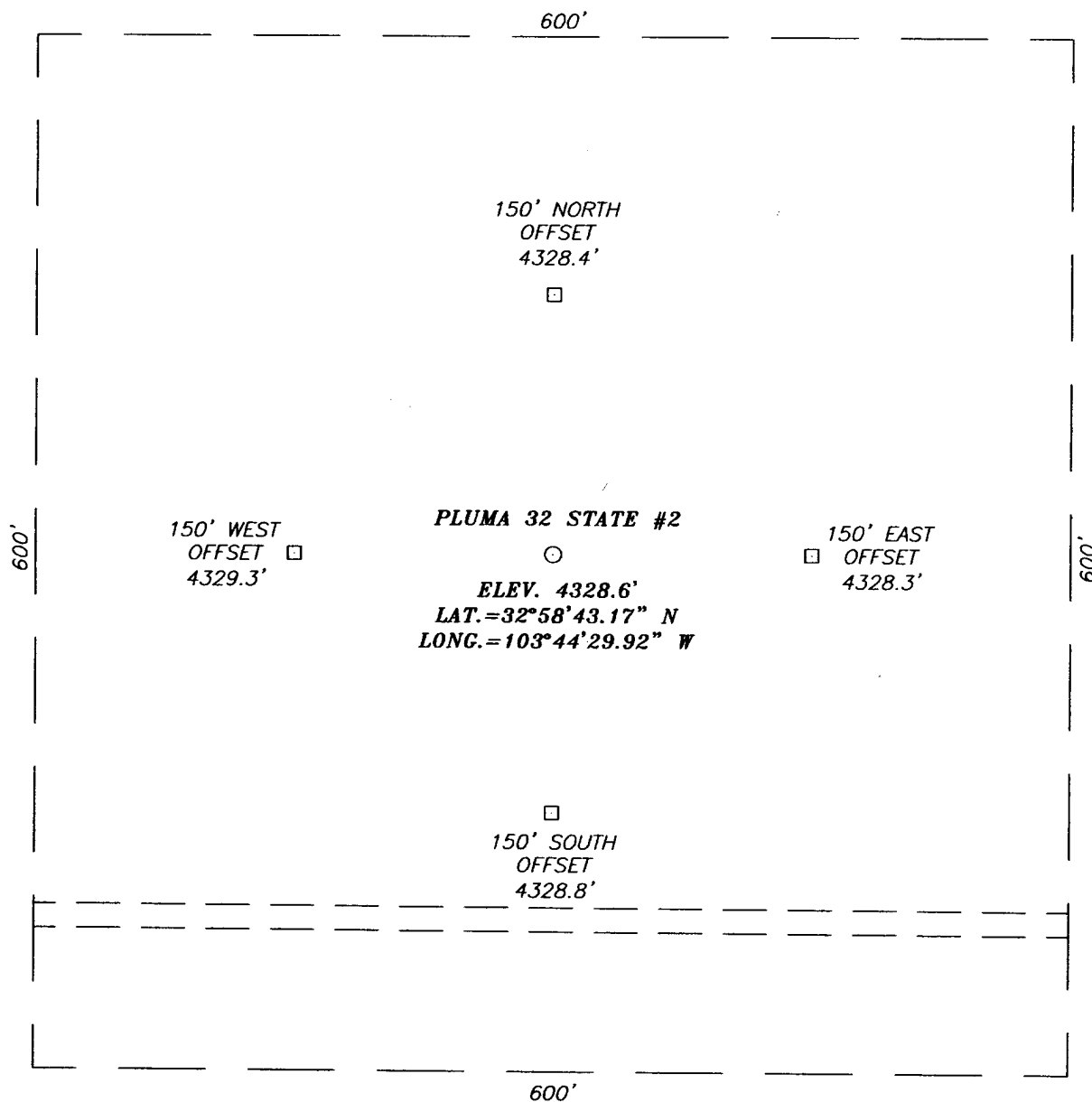
UL or lot No.	Section	Township	Range	Lot Idn	Feet from the	North/South line	Feet from the	East/West line	County
Dedicated Acres 80	Joint or Infill	Consolidation Code	Order No.						

NO ALLOWABLE WILL BE ASSIGNED TO THIS COMPLETION UNTIL ALL INTERESTS HAVE BEEN CONSOLIDATED
OR A NON-STANDARD UNIT HAS BEEN APPROVED BY THE DIVISION



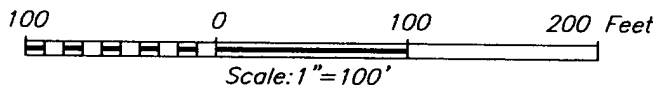
OPERATOR CERTIFICATION	
I hereby certify the the information contained herein is true and complete to the best of my knowledge and belief.	
<i>Joe T. Janica</i>	
Signature	
Joe T. Janica	
Printed Name	
Agent	
Title	
02/22/05	
Date	
SURVEYOR CERTIFICATION	
I hereby certify that the well location shown on this plat was plotted from field notes of actual surveys made by me or under my supervision, and that the same is true and correct to the best of my belief.	
FEBRUARY 15, 2005	
Date Surveyed	LA
Signature & Seal of Professional Surveyor	
<i>Barry J. Edson</i>	
12641	
05.11.0258	
Certification No.	12641

SECTION 32, TOWNSHIP 15 SOUTH, RANGE 32 EAST, N.M.P.M.,
 LEA COUNTY, NEW MEXICO



DIRECTIONS TO LOCATION


FROM THE INTERSECTION OF U.S. HWY. #82 & MENDEL ROAD GO NORTH ON MENDEL ROAD APPROX. 4.5 MILES TO PATTERSON ROAD. TURN RIGHT ON PATTERSON ROAD. AND GO EAST APPROX. 0.8 MILES. TURN LEFT AND GO APPROX. 0.4 MILES NORTH. ROAD TURNS RIGHT. GO EAST APPROX. 0.4 MILES. ROAD TURNS LEFT, GO NORTH APPROX. 2.4 MILES TO A TRAIL ROAD. TURN LEFT AND GO WEST APPROX. 0.65 MILES TO THIS LOCATION.



POGO PRODUCING COMPANY

PLUMA 32 STATE #2 WELL
 LOCATED 660 FEET FROM THE NORTH LINE
 AND 1980 FEET FROM THE WEST LINE OF SECTION 32,
 TOWNSHIP 15 SOUTH, RANGE 32 EAST, N.M.P.M.,
 LEA COUNTY, NEW MEXICO.

Survey Date: 2/15/05	Sheet 1 of 1 Sheets
W.O. Number: 05.11.0258	Dr By: LA
Date: 2/19/05	Rev 1: N/A
Disk: CD#4	05110258
	Scale: 1"=100'



PROVIDING SURVEYING SERVICES
 SINCE 1946
JOHN WEST SURVEYING COMPANY
 412 N. DAL PASO
 HOBBS, N.M. 88240
 (505) 393-3117

VICINITY MAP



SCALE: 1" = 2 MILES

SEC. 32 TWP. 15-S RGE. 32-E

SURVEY N.M.P.M.

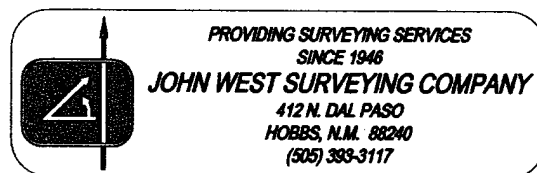
COUNTY LEA

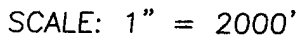
DESCRIPTION 660' FNL & 1980' FWL

ELEVATION 4329'

OPERATOR POGO PRODUCING COMPANY

LEASE PLUMA 32 STATE





SEC. 32 TWP. 15-S RGE. 32-E

SURVEY_____ N.M.P.M.

COUNTY _____ LEA _____

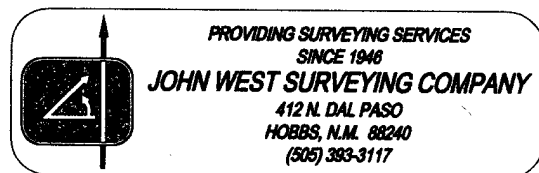
DESCRIPTION 660' FNL & 1980' FWL

ELEVATION 4329'

OPERATOR POGO PRODUCING COMPANY

LEASE_____ PLUMA 32 STATE

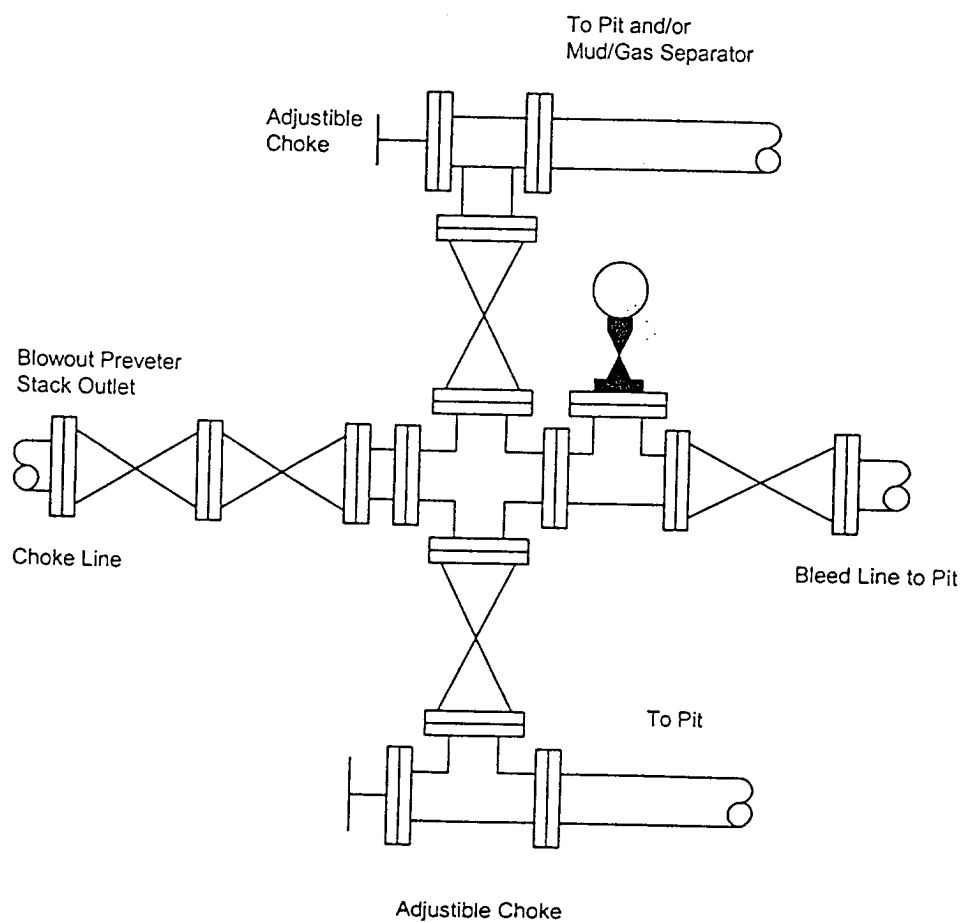
U.S.G.S. TOPOGRAPHIC MAP
BUCKEYE NW, N.M.



BLOWOUT PREVENTER SYSTEM

3000 PSI

Choke Manifold Assembly for 5M WP System



Fill Line

