

OPER. OGRID NO. 17891PROPERTY NO. 9316POOL CODE 51683EFF. DATE 7/30/97API NO. 3D-025-33223MISSION  
INSTRUCTIONS ON  
PAGE 88240  
7 JP  
7 RM  
NFORM APPROVED  
OMB NO. 1004-0136  
Expires: February 28, 1995DEPARTMENT  
BUREAU

APPLICATION FOR

1a. TYPE OF WORK

DRILL ☒DEEPEN ☐

b. TYPE OF WELL

OIL  
WELL ☒GAS  
WELL ☐

OTHER

SINGLE  
ZONE ☒MULTIPLE  
ZONE ☐

2. NAME OF OPERATOR

POGO PRODUCING COMPANY

(RICHARD WRIGHT)

3. ADDRESS AND TELEPHONE NO.

P.O. 10340 MIDLAND, TEXAS 79702 Phone 915-682-6822

4. LOCATION OF WELL (Report location clearly and in accordance with any State requirements.)

At surface  
2180' FNL & 750' FEL SEC 25 T22S-R32E LEA CO. NM

At proposed prod. zone

same

Unit H

14. DISTANCE IN MILES AND DIRECTION FROM NEAREST TOWN OR POST OFFICE

Approximately 30 miles East of Carlsbad, N.M.

15. DISTANCE FROM PROPOSED

LOCATION TO NEAREST  
PROPERTY OR LEASE LINE, FT.  
(Also to nearest drlg. unit line, if any)

750'

16. NO. OF ACRES IN LEASE

1280

18. DISTANCE FROM PROPOSED LOCATION

TO NEAREST WELL, DRILLING, COMPLETED,  
OR APPLIED FOR, ON THIS LEASE, FT.

850'

19. PROPOSED DEPTH

9200'

17. NO. OF ACRES ASSIGNED  
TO THIS WELL

40

20. ROTARY OR CABLE TOOLS

ROTARY

21. ELEVATIONS (Show whether DF, RT, GR, etc.)

3740' GR.

22. APPROX. DATE WORK WILL START

As soon as approved

23.

## PROPOSED CASING AND CEMENTING PROGRAM

SIZE OF HOLE	GRADE, SIZE OF CASING	WEIGHT PER FOOT	SETTING DEPTH	QUANTITY OF CEMENT
25"	20" Conductor	NA	40'	Cement to surface w/Redi-Mix
14-3/4"	H-40 10-3/8"	32.75 10-3/4"	800'	600 sx Circulate to surface
9-7/8"	J-55 7-5/8"	26.4	4600'	1300 sx " " "
6-3/4"	J-55 N-80 4 1/2"	11.6	9200'	950 sx Est. Top cement 3600'

1. Drill 25" hole to 40'. Set 40' of 20" conductor and cement to surface w/Redi-mix.
2. Drill 14-3/4" hole to 800'. Run & set 800' of 10-3/4" H-40 32.75# ST&C casing. Cement with 600 sx. Class "C" Halco Light, tail in with 200 sx Class "C" + 2% CaCl. Circulate cement to surface.
3. Drill 9-7/8" hole to 4600'. Run & set 4600' of 7-5/8" J-55 & N-80 26.4# ST&C casing. Cement with 1100 sx class "C" Halco Light + 10% salt, tail in with 200 sx Class "C" premium cement + 1% CaCl. Circulate cement to surface.
4. Drill 6-3/4" hole to 9200'. Run & set 9200' of 4 1/2" J-55 & N-80 11.6# LT&C casing. Cement with 700 sx Class "H" Halco light, tail in with 250 sx of Class "H" premium cement + additives. Estimated top of cement 3600'.

IN ABOVE SPACE DESCRIBE PROPOSED PROGRAM: If proposal is to deepen, give data on present productive zone and proposed new productive zone. If proposal is to drill or deepen directionally, give pertinent data on subsurface locations and measured and true vertical depths. Give blowout preventer program, if any.

24.

SIGNED

James G. Pettengill

TITLE

Agent

DATE

05/10/97

(This space for Federal or State office use)

PERMIT NO.

APPROVAL DATE

Application approval does not warrant or certify that the applicant holds legal or equitable title to those rights in the subject lease which would entitle the applicant to conduct operations thereon.  
CONDITIONS OF APPROVAL, IF ANY:

APPROVED BY

(ORIG. SGD.) JAMES G. PETTENGILL

TITLE

ADM. MINERALS

DATE

7/28/97

\*See Instructions On Reverse Side

DISTRICT I  
P.O. Box 1980, Hobbs, NM 88241-1980

State of New Mexico  
Energy, Minerals and Natural Resources Department

Form C-102  
Revised February 10, 1994  
Submit to Appropriate District Office  
State Lease - 4 Copies  
Fee Lease - 3 Copies

DISTRICT II  
P.O. Drawer DD, Artesia, NM 88211-0719

DISTRICT III  
1000 Rio Brazos Rd., Aztec, NM 87410

DISTRICT IV  
P.O. BOX 2088, SANTA FE, N.M. 87504-2088

OIL CONSERVATION DIVISION  
P.O. Box 2088

Santa Fe, New Mexico 87504-2088

☐ AMENDED REPORT

WELL LOCATION AND ACREAGE DEDICATION PLAT

API Number <b>30-025-</b>	Pool Code <b>51683</b>	Pool Name <b>Red Tank Bone Spring</b>
Property Code <b>009316</b>	Property Name <b>COVINGTON "A" FEDERAL</b>	Well Number <b>12</b>
OGRID No. <b>17891</b>	Operator Name <b>POGO PRODUCING COMPANY</b>	Elevation <b>3740</b>

Surface Location

UL or lot No.	Section	Township	Range	Lot Idn	Feet from the	North/South line	Feet from the	East/West line	County
H	25	22 S	32 E		2180	NORTH	750	EAST	LEA

Bottom Hole Location If Different From Surface

UL or lot No.	Section	Township	Range	Lot Idn	Feet from the	North/South line	Feet from the	East/West line	County
Dedicated Acres <b>40</b>	Joint or Infill	Consolidation Code	Order No.						

NO ALLOWABLE WILL BE ASSIGNED TO THIS COMPLETION UNTIL ALL INTERESTS HAVE BEEN CONSOLIDATED  
OR A NON-STANDARD UNIT HAS BEEN APPROVED BY THE DIVISION

	<p><b>OPERATOR CERTIFICATION</b></p> <p>I hereby certify the the information contained herein is true and complete to the best of my knowledge and belief.</p> <p><i>Joe T Janica</i> Signature <b>Joe T. Janica</b> Printed Name <b>Agent</b> Title <b>05/10/97</b> Date</p> <p><b>SURVEYOR CERTIFICATION</b></p> <p>I hereby certify that the well location shown on this plat was plotted from field notes of actual surveys made by me or under my supervision, and that the same is true and correct to the best of my belief.</p> <p><b>MAY 8, 1997</b> Date Surveyed DMCC Signature of Seal of Professional Surveyor <i>Ronald L. Edson</i> Professional Surveyor Certificate No. <b>JOHN W. EDSON 676</b> <b>RONALD L. EDSON 3239</b> <b>12641</b></p>
--	----------------------------------------------------------------------------------------------------------------------------------------------------------------------------------------------------------------------------------------------------------------------------------------------------------------------------------------------------------------------------------------------------------------------------------------------------------------------------------------------------------------------------------------------------------------------------------------------------------------------------------------------------------------------------------------------------------------------------------------------------------------------------------------------------------------------------

APPLICATION TO DRILL  
 POGO PRODUCING COMPANY  
 COVINGTON "A" FEDERAL # 12  
 UNIT "H" SECTION 25  
 T22S-R32E LEA CO. NM

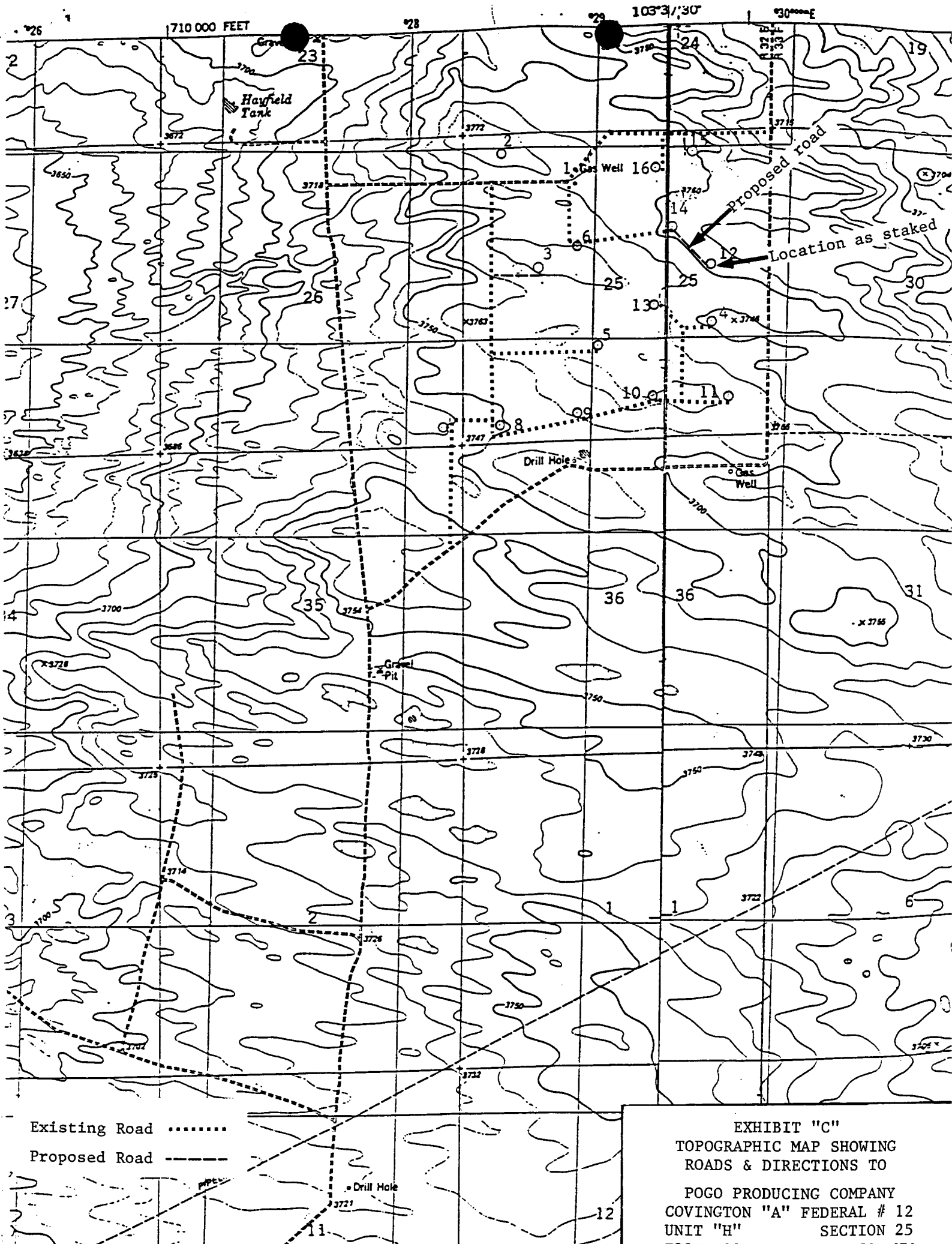
In response to questions asked under Section II B of Bulletin NTL-6 the following information is provided for your consideration:

1. Location: 2180' FNL & 750' FEL SEC. 25 T22S-R32E Lea Co. NM
2. Elevation above sea level: 3740' GR.
3. Geologic name of surface formation: Quaternary Aeolian Deposits.
4. Drilling tools and associated equipment: Conventional rotary drilling rig using fluid as a circulating medium for solids removal.
5. Proposed drilling depth: 9200'
6. Estimated tops of geological markers:

Rustler Anhydrite	850'	Brushy Canyon	7400'
Delaware Lime	4800'	Bone Spring	8800'
Cherry Canyon	6100'		
7. Possible mineral bearing formations:

Delaware	Oil
Bone Spring	Oil
8. Casing program:

HOLE SIZE	INTERVAL	OD CSG	WEIGHT	THREAD	COLLAR	GRADE	COND.
25"	0-40'	20"	.31 Wall	NA	NA	NA	New
14 3/4"	0-800	10 3/4"	32.7	8-R	ST&C	H-40	New
9 7/8"	0-4600'	7 5/8"	26.4	8-R	ST&C	J-55 & N-80	New
6 3/4"	0-9200'	4 1/2"	11.6	8-R	LT&C	J-55 & N-80	New



Existing Road .....  
Proposed Road - - - - -

EXHIBIT "C"  
TOPOGRAPHIC MAP SHOWING  
ROADS & DIRECTIONS TO  
POGO PRODUCING COMPANY  
COVINGTON "A" FEDERAL # 12  
UNIT "H" SECTION 25

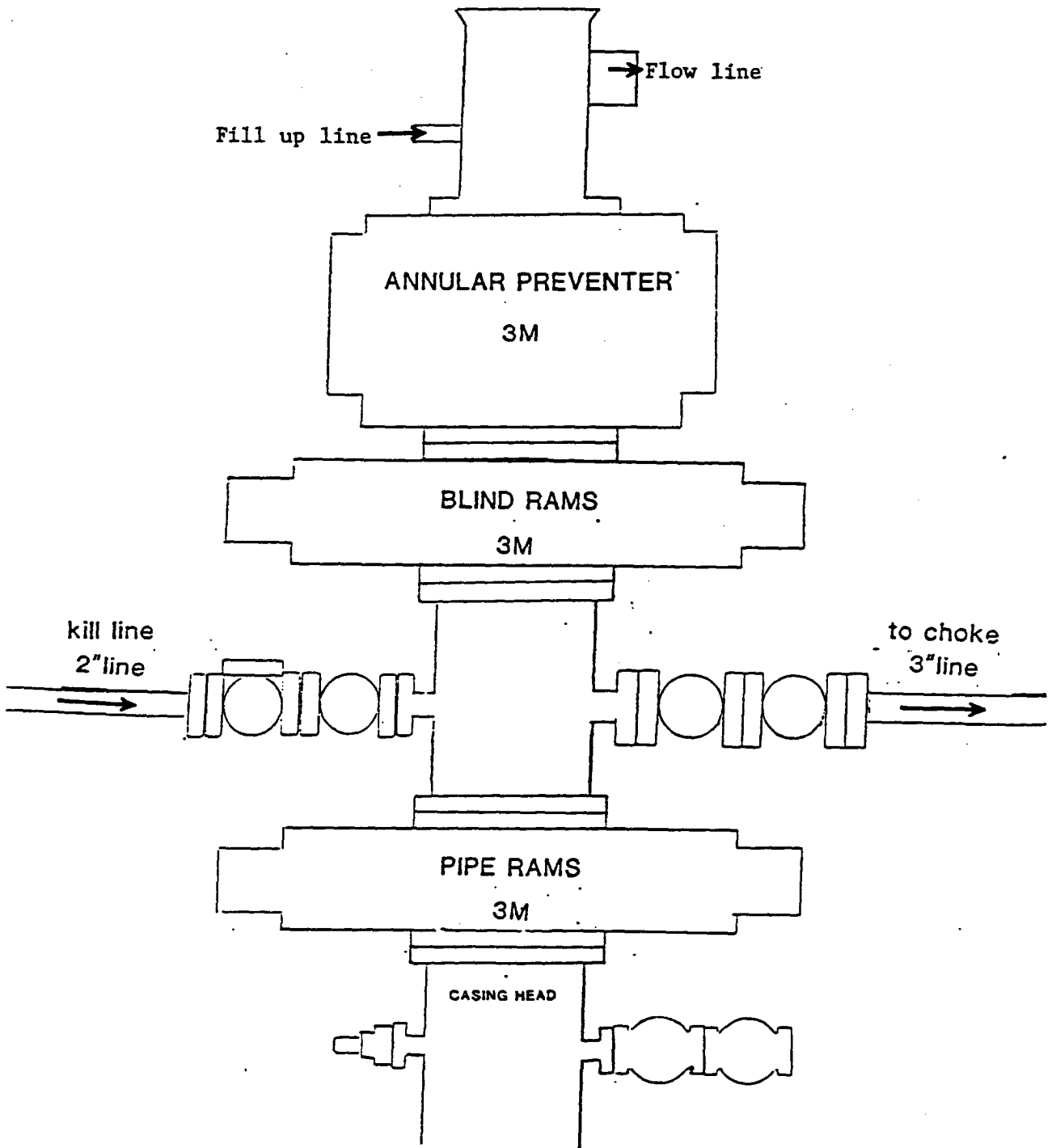


EXHIBIT "E"  
 B.O.P. SKETCH TO BE USED ON  
 POGO PRODUCING COMPANY  
 COVINGTON "A" FEDERAL # 12  
 UNIT "H" SECTION 25  
 T22S-R32E LEA CO. NM

