

DISTRICT I
1625 N.Fruech Dr., Hobbs, NM 88240

DISTRICT II
1301 W. Grand Avenue, Atesia, NM 88210

DISTRICT III
1000 Rio Brazos Road, Aztec, NM 87410

DISTRICT IV
2040 South Pacheco, Santa Fe, NM 87505

STATE OF NEW MEXICO
Energy, Minerals and Natural Resources Department

Form C-101
May 27, 2004

Submit to Appropriate District Office

OIL CONSERVATION DIVISION
1220 South St. Francis Dr.
Santa Fe, NM 87505

AMENDED REPORT

APPLICATION FOR PERMIT TO DRILL, RE-ENTER, DEEPEN, PLUGBACK, OR ADD A ZONE

1 Operator Name and Address PALADIN ENERGY CORP. 10290 Monroe Drive, Suite 301 Dallas, Texas 75229		2 OGRID Number 164070
4 Property Code 22557	5 Property Name South Vacuum Unit	3 API Number 30-025-37122
9 Proposed Pool 1 Vacuum Mckee, South 97368		6 Well No. 274
10 Proposed Pool 2		

7 Surface Location

UL or lot No. P	Section 27	Township 18-S	Range 35-E	Lot. Ind.	Feet from the 960	North/South Line South	Feet from the 693	East/West Line East	County Lea
--------------------	---------------	------------------	---------------	-----------	----------------------	---------------------------	----------------------	------------------------	---------------

8 Proposed Bottom Hole Location If Different From Surface

UL or lot No.	Section	Township	Range	Lot. Ind.	Feet from the	North/South Line	Feet from the	East/West Line	County Lea
---------------	---------	----------	-------	-----------	---------------	------------------	---------------	----------------	---------------

Additional Well Information

11 Work Type Code N	12 Well Type Code G	13 Cable/Rotary Rotary	14 Lease Type Code S	15 Ground Level Elevation 3886'
16 Multiple No	17 Proposed depth 15,000	18 Formation Granite Wash	19 Contractor	20 Spud Date 4/20/2005
Depth to Groundwater: approx 68'		Distance from nearest fresh water well 1/2 mile plus		Distance from nearest surface water: Playa - 1500 feet
Pit: Liner: Synthetic <input checked="" type="checkbox"/> Closed-Loop System <input type="checkbox"/>	12 mils thick Clay <input type="checkbox"/>	Pit Volume: 14,366 bbls	Drilling Method: Fresh Water <input type="checkbox"/> Brine <input checked="" type="checkbox"/> Disel/Oil-Based <input type="checkbox"/> Gas/Air <input type="checkbox"/>	

21 Proposed Casing and Cement Program

Hole Size	Casing Size	Casing weight/foot	Setting Depth	Sacks Cement	Estimated TOC
17-1/2"	13-3/8"	48#	420'	450	Sur
12-1/4"	9-5/8"	40#	3,800'	1300	
8-3/4"	7"	26# & 29#	12,600	700	7500'
6-1/4"	5"	18#	15,000	250	12,000'

22 Describe the proposed program. If this application is to DEEPEN or PLUG BACK give the data on the present productive zone and proposed new productive zone. Describe the blowout prevention program, if any. Use additional sheets if necessary.

Drill 17-1/2" hole and set 13-3/8" conductor, drill out to 3800' (+,-) and set 9-5/8" surface casing - cement to surface.
Drill 8-3/4" hole to 12,600' (+,-), set 7" casing and cement with TOC at approx. 7500'.
Drill 6-1/4" hole from 12,600' to 15,000' (+,-), run open hole logs & cores, set 5" casing liner from 12,300' to 15,000', cement liner.
Perforate Mckee Sand, perform proppant fracture treatment job w/ approximately 180,000 gallons water, acid & additives and 170,000 pounds of proppant. Complete and test well.

Permit Expires 1 Year From Approval Date Unless Drilling Underway

BOP - 11" Hydraulic Dual Ram (10M), Blind & Pipe

47 I hereby certify that the rules of the Oil Conservation Division have been complied with and that the information given above is true and complete to the best of my knowledge and belief. I further certify that the drill pit will be constructed according NMOCD guideline X, a general permit , or an (attached) alternative

OCD-approved plan

Printed name: David Plaisance

Title: V.P. Exploration & Production

E-mail Address:

Date: 3/4/2005

Phone: 214-654-0132

OIL CONSERVATION DIVISION

Approved by:

Title:

Approval Date:

Conditions of Approval
Attached ☐

PETROLEUM ENGINEER

Expiration Date:

MAR 09 2005

DISTRICT I
1626 N. FRENCH DR., HOBBS, NM 88240

DISTRICT II
1301 W. GRAND AVENUE, ARTESIA, NM 88210

DISTRICT III
1000 Rio Brazos Rd., Aztec, NM 87410

DISTRICT IV
1220 S. ST. FRANCIS DR., SANTA FE, NM 87505

State of New Mexico
Energy, Minerals and Natural Resources Department

OIL CONSERVATION DIVISION
1220 SOUTH ST. FRANCIS DR.
Santa Fe, New Mexico 87505

Form C-102
Revised JUNE 10, 2003
Submit to Appropriate District Office
State Lease - 4 Copies
Fee Lease - 3 Copies

WELL LOCATION AND ACREAGE DEDICATION PLAT

☐ AMENDED REPORT

API Number 30-025-37122	Pool Code 97368	Pool Name Vacuum Mckee, South
Property Code 22557	Property Name SOUTH VACUUM UNIT	Well Number 274
OGRID No. 164070	Operator Name PALADIN ENERGY CORPORATION	Elevation 3886'

Surface Location

UL or lot No. P	Section 27	Township 18-S	Range 35-E	Lot Idn	Feet from the 960	North/South line SOUTH	Feet from the 693	East/West line EAST	County LEA
---------------------------	----------------------	-------------------------	----------------------	---------	-----------------------------	----------------------------------	-----------------------------	-------------------------------	----------------------

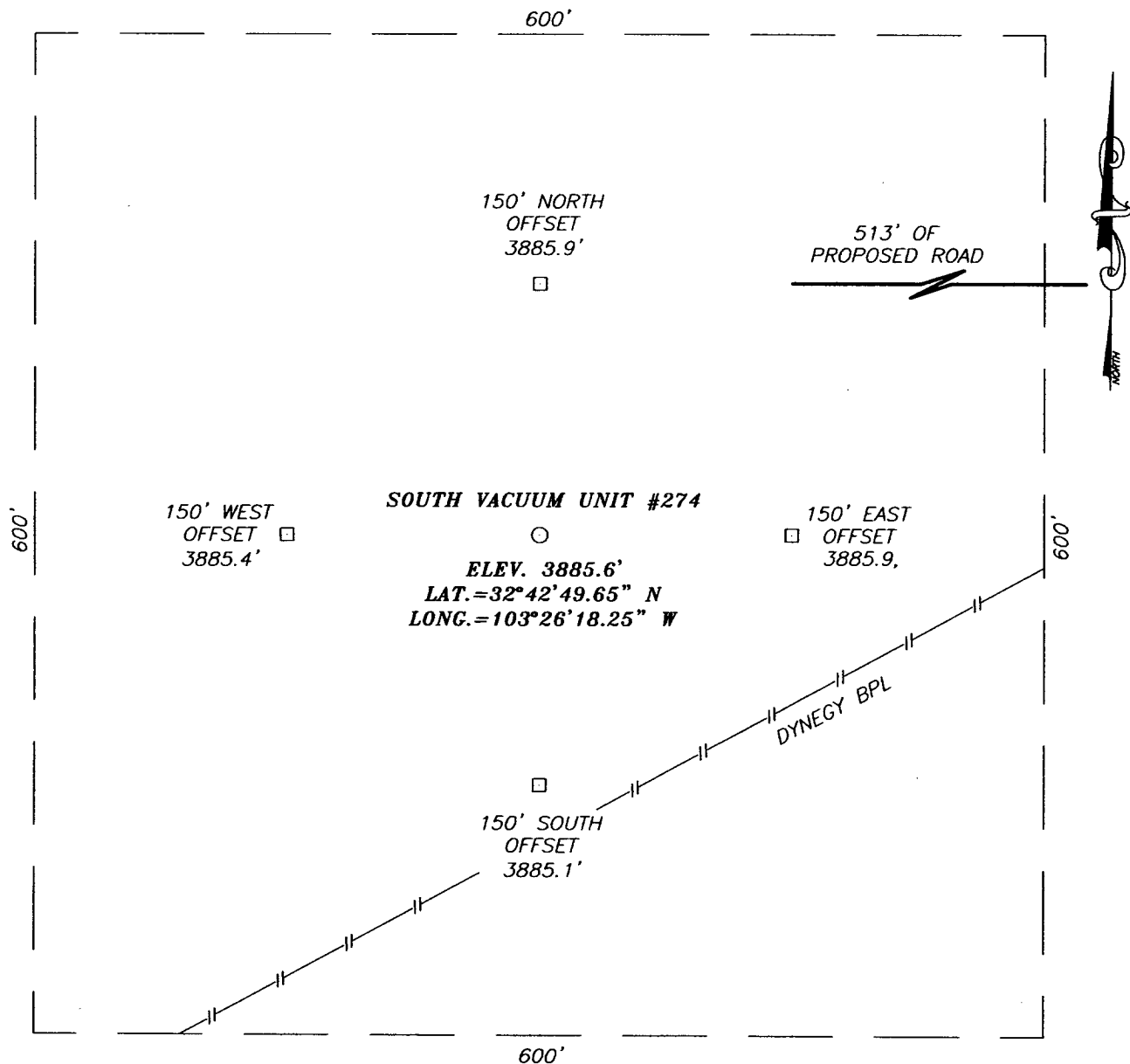
Bottom Hole Location If Different From Surface

UL or lot No.	Section	Township	Range	Lot Idn	Feet from the	North/South line	Feet from the	East/West line	County
Dedicated Acres 320	Joint or Infill	Consolidation Code	Order No.						

NO ALLOWABLE WILL BE ASSIGNED TO THIS COMPLETION UNTIL ALL INTERESTS HAVE BEEN CONSOLIDATED
OR A NON-STANDARD UNIT HAS BEEN APPROVED BY THE DIVISION

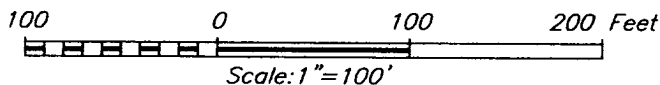
<p>GEODETIC COORDINATES NAD 27 NME Y=624549.9 N X=775257.8 E LAT.=32°42'49.65" N LONG.=103°26'18.25" W</p> <p>693' 960'</p>	<p>OPERATOR CERTIFICATION</p> <p>I hereby certify the the information contained herein is true and complete to the best of my knowledge and belief.</p> <p><i>David Plaisance</i> Signature DAVID PLAISANCE Printed Name V.P. EIP Title 2/24/05 Date</p> <p>SURVEYOR CERTIFICATION</p> <p>I hereby certify that the well location shown on this plat was plotted from field notes of actual surveys made by me or under my supervision, and that the same is true and correct to the best of my belief.</p> <p>FEBRUARY 19, 2005</p> <p>Date Surveyed Signature & Seal of Professional Surveyor <i>GARY EIDSON</i> 05.11.0292 Certificate No. GARY EIDSON 12641</p>
---	---

SECTION 27, TOWNSHIP 18 SOUTH, RANGE 35 EAST, N.M.P.M.,
 LEA COUNTY, NEW MEXICO



DIRECTIONS TO LOCATION

FROM THE INTERSECTION OF ST. HWY. #529 AND ST. HWY. #238. GO APPROX. 1.1 MILES NW ON ST. HWY. #238 TO CALICHE ROAD. TURN RIGHT AND GO 0.5 MILES NORTH TO PROPOSED ROAD SURVEY ON LEFT. THIS LOCATION IS APPROX. 513' WEST.



PALADIN ENERGY CORPORATION

SOUTH VACUUM UNIT #274 WELL
 LOCATED 960 FEET FROM THE SOUTH LINE
 AND 693 FEET FROM THE EAST LINE OF SECTION 27,
 TOWNSHIP 18 SOUTH, RANGE 35 EAST, N.M.P.M.,
 LEA COUNTY, NEW MEXICO.

Survey Date: 02/19/05	Sheet 1 of 1 Sheets
W.O. Number: 05.11.0292	Dr By: D. LOVE
Date: 02/21/05	Rev 1: N/A
Disk: CD#4	05110292
Scale: 1"=100'	

PROVIDING SURVEYING SERVICES
 SINCE 1946
JOHN WEST SURVEYING COMPANY
 412 N. DAL PASO
 HOBBS, N.M. 88240
 (505) 393-3117