

District I  
1625 N. French Dr., Hobbs, NM 88240  
District II  
1301 W. Grand Avenue, Artesia, NM 88210  
District III  
1000 Rio Brazos Road, Aztec, NM 87410  
District IV  
1220 S. St. Francis Dr., Santa Fe, NM 87505

State of New Mexico  
Energy Minerals and Natural Resources

Form C-101  
May 27, 2004

Oil Conservation Division  
1220 South St. Francis Dr.  
Santa Fe, NM 87505

Submit to appropriate District Office

☐ AMENDED REPORT

APPLICATION FOR PERMIT TO DRILL, RE-ENTER, DEEPEN, PLUGBACK, OR ADD A ZONE

<sup>1</sup> Operator Name and Address POGO PRODUCING COMPANY P.O. BOX 10340 MIDLAND, TEXAS 79702-7340		<sup>2</sup> OGRID Number 17891 ✓
<sup>3</sup> API Number 30 - 025-37134		
<sup>4</sup> Property Code 23819 ✓	<sup>5</sup> Property Name PLUMA "29" STATE	<sup>6</sup> Well No. 4
<sup>7</sup> Proposed Pool 1 FEATHER - WOLFCAMP (24210)		<sup>8</sup> Proposed Pool 2

<sup>7</sup> Surface Location

UL or lot no. J	Section 29	Township 15S	Range 32E	Lot Idn	Feet from the 1800'	North/South line SOUTH	Feet from the 1650'	East/West line EAST	County LEA
--------------------	---------------	-----------------	--------------	---------	------------------------	---------------------------	------------------------	------------------------	---------------

<sup>8</sup> Proposed Bottom Hole Location If Different From Surface

UL or lot no.	Section	Township	Range	Lot Idn	Feet from the	North/South line	Feet from the	East/West line	County
---------------	---------	----------	-------	---------	---------------	------------------	---------------	----------------	--------

Additional Well Information

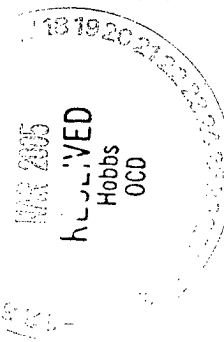
<sup>11</sup> Work Type Code N	<sup>12</sup> Well Type Code O ✓	<sup>13</sup> Cable/Rotary ROTARY	<sup>14</sup> Lease Type Code S ✓	<sup>15</sup> Ground Level Elevation 4323 GR ✓
<sup>16</sup> Multiple NO	<sup>17</sup> Proposed Depth 11,000'	<sup>18</sup> Formation WOLFCAMP	<sup>19</sup> Contractor UNKNOWN	<sup>20</sup> Spud Date WHEN APPROVED
Depth to Groundwater 210'		Distance from nearest fresh water well 1500'		Distance from nearest surface water PLAYA 2500'
Pit: Liner: Synthetic <input checked="" type="checkbox"/> 12 mils thick Clay <input type="checkbox"/> Pit Volume: 18M bbls Drilling Method: Fresh Water <input type="checkbox"/> Brine <input checked="" type="checkbox"/> Diesel/Oil-based <input type="checkbox"/> Gas/Air <input type="checkbox"/>				
Closed-Loop System <input type="checkbox"/>				

<sup>21</sup> Proposed Casing and Cement Program

Hole Size	Casing Size	Casing weight/foot	Setting Depth	Sacks of Cement	Estimated TOC
25"	20"	Conductor	40'	Redi-mix	Surface
17 1/2"	13 3/8"	48#	450'	800 Sx.	Surface
11"	8 5/8"	32#	4200'	1200 Sx.	Surface
7 7/8"	5 1/2"	17#	11,000'	1250 Sx.	Surface 2 stage

<sup>22</sup> Describe the proposed program. If this application is to DEEPEN or PLUG BACK, give the data on the present productive zone and proposed new productive zone. Describe the blowout prevention program, if any. Use additional sheets if necessary.

SEE ATTACHMENT



<sup>23</sup> I hereby certify that the information given above is true and complete to the best of my knowledge and belief. I further certify that the drilling pit will be constructed according to NMOC guidelines <input checked="" type="checkbox"/> a general permit <input type="checkbox"/> or an (attached) alternative OCD-approved plan <input type="checkbox"/> .		OIL CONSERVATION DIVISION	
Printed name: Joe T. Janica		Approved by: <i>[Signature]</i>	
Title: Agent		Title: PETROLEUM ENGINEER	
E-mail Address:		Approval Date: Expiration Date:	
Date: 03/11/05	Phone: 505-391-8503	Conditions of Approval Attached <input checked="" type="checkbox"/>	

POGO PRODUCING COMPANY  
PLUMA "29" STATE # 4  
1800' FSL & 1650' FEL  
SECTION 29 T15S-R32E  
LEA CO. NEW MEXICO

1. Drill 25" hole to 40'. Set 40' of 20" conductor pipe and cement to surface with Redi-mix.
2. Drill 17½" hole to 450'. Run and set 450' of 13 3/8" 48# H-40 ST&C casing. Cement with 600 Sx. of 65/35/6 POZ/Gel Class "C" cement, tail in with 200 Sx. of Class "C" cement + 2% CaCl, circulate cement to surface.
3. Drill 11" hole to 4200'. Run and set 4200' of 8 5/8" 32# J-55 ST&C casing. Cement with 1000 Sx. of 65/35/6 POZ/Gel + 5% NaCl, tail in with 200 Sx. of Class "C" cement + 2% CaCl, circulate cement to surface.
4. Drill 7 7/8" hole to 11,000'. Run and set 11,000' of 5½" 17# L-80 LT&C casing. Cement in two stages with DV Tool at 7000'±. Cement 1st stage with 650 Sx. of Class "H" cement + additives, cement 2nd stage with 600 Sx. of Class "C" cement + 8# of Gilsonite /Sx., circulate cement to surface.

DISTRICT I  
1625 N. FRENCH DR., BOBBS, NM 88240

DISTRICT II  
1301 W. GRAND AVENUE, ARTESIA, NM 88210

DISTRICT III  
1000 Rio Brazos Rd., Aztec, NM 87410

DISTRICT IV  
1220 S. ST. FRANCIS DR., SANTA FE, NM 87505

State of New Mexico  
Energy, Minerals and Natural Resources Department

OIL CONSERVATION DIVISION  
1220 SOUTH ST. FRANCIS DR.  
Santa Fe, New Mexico 87505

Form C-102  
Revised JUNE 10, 2003  
Submit to Appropriate District Office  
State Lease - 4 Copies  
Fee Lease - 3 Copies

WELL LOCATION AND ACREAGE DEDICATION PLAT

☐ AMENDED REPORT

API Number <b>30-025-37134</b>	Pool Code 24210 ✓	Pool Name FEATHER-WOLFCAMP ✓
Property Code <del>23891</del> <b>23819</b>	Property Name <b>PLUMA 29 STATE</b>	Well Number 4 ✓
OGRID No. 17891	Operator Name <b>POGO PRODUCING COMPANY</b>	Elevation 4323'

Surface Location

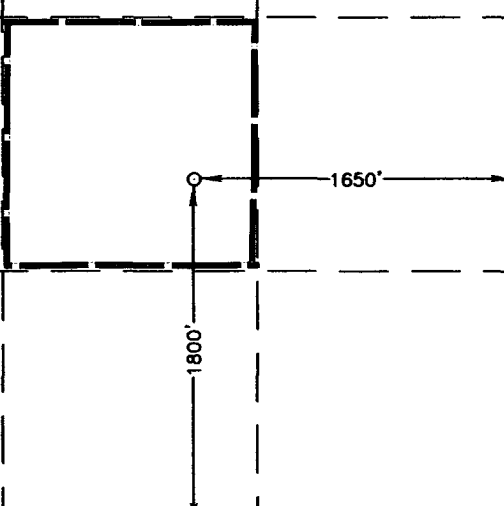
UL or lot No.	Section	Township	Range	Lot Idn	Feet from the	North/South line	Feet from the	East/West line	County
J	29	15-S	32-E		1800	SOUTH	1650	EAST	LEA

Bottom Hole Location If Different From Surface

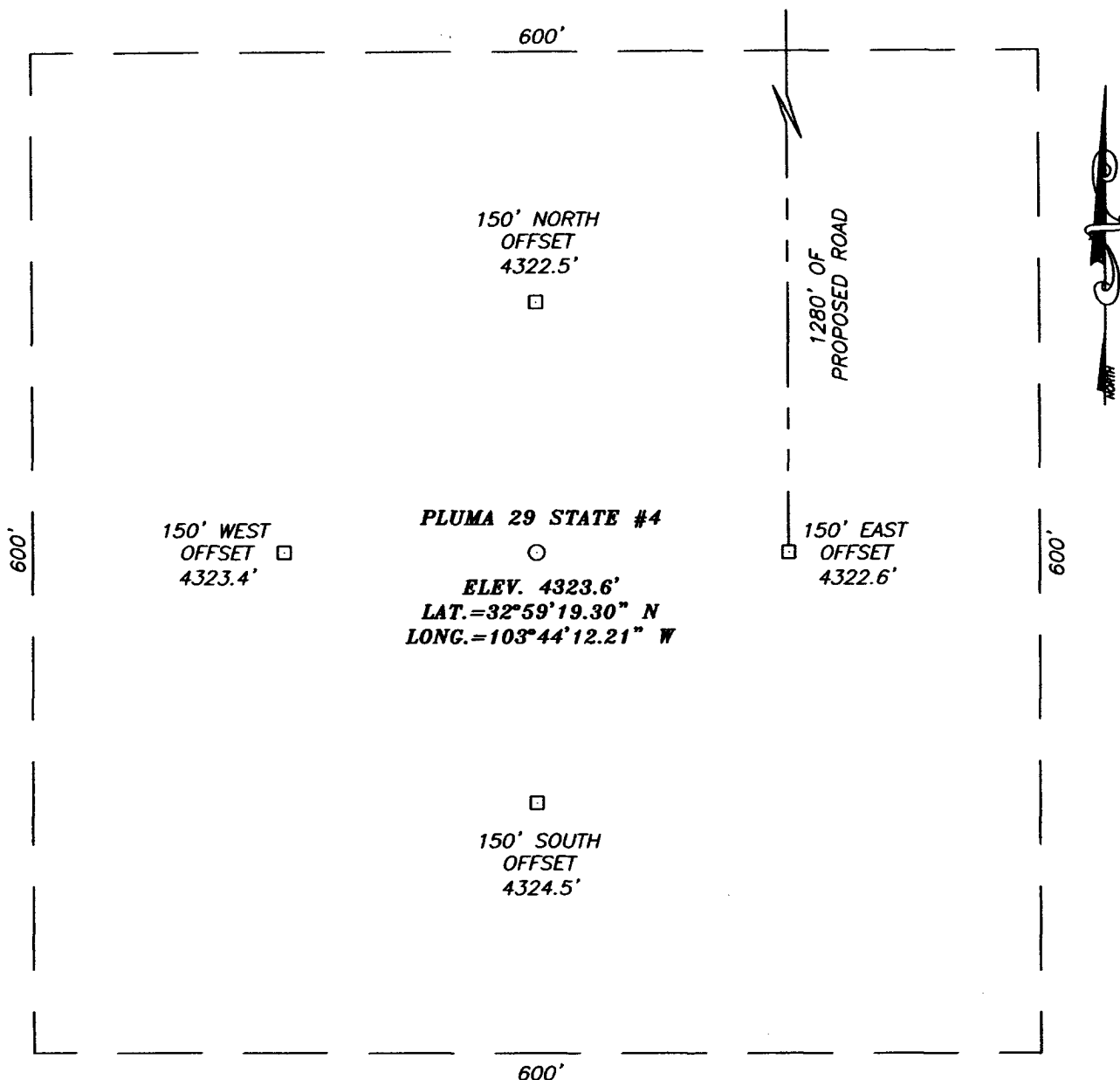
UL or lot No.	Section	Township	Range	Lot Idn	Feet from the	North/South line	Feet from the	East/West line	County

Dedicated Acres 40	Joint or Infill	Consolidation Code	Order No.
-----------------------	-----------------	--------------------	-----------

NO ALLOWABLE WILL BE ASSIGNED TO THIS COMPLETION UNTIL ALL INTERESTS HAVE BEEN CONSOLIDATED  
OR A NON-STANDARD UNIT HAS BEEN APPROVED BY THE DIVISION

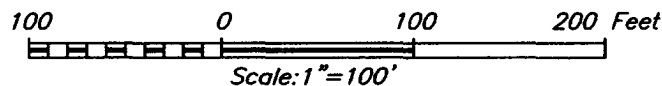
<p>GEODETIC COORDINATES NAD 27 NME</p> <p>Y=723918.6 N X=682935.2 E</p> <p>LAT.=32°59'19.30" N LONG.=103°44'12.21" W</p> 	<p><b>OPERATOR CERTIFICATION</b></p> <p>I hereby certify the the information contained herein is true and complete to the best of my knowledge and belief.</p> <p><i>Joe T. Janica</i> Signature Joe T. Janica Printed Name Agent Title 03/11/05 Date</p> <p><b>SURVEYOR CERTIFICATION</b></p> <p>I hereby certify that the well location shown on this plat was plotted from field notes of actual surveys made by me or under my supervision and that the same is true and correct to the best of my belief.</p> <p>MARCH 2, 2005</p> <p>Date Surveyed Signature of Surveyor Professional Surveyor GARY EDISON 3/11/05 036410349 Certificate No. GARY EDISON 12641</p>
---	--

SECTION 29, TOWNSHIP 15 SOUTH, RANGE 32 EAST, N.M.P.M.,  
LEA COUNTY, NEW MEXICO



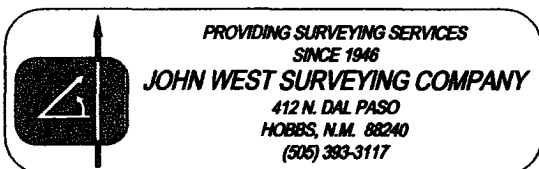
DIRECTIONS TO LOCATION

FROM THE INTERSECTION OF U.S. HWY. #82 AND  
CO. RD. L-121 (MENDEL RD.). GO NORTH ON CO.  
RD. L-121 APPROX. 4.7 MILES. TURN RIGHT  
(EAST) ONTO CO. RD. L-118 (PATTERSON RD.)  
AND GO EAST ON CO. RD. L-118 APPROX. 0.85  
MILES. CONTINUE ON ROAD LEFT (NE) ANOTHER  
APPROX. 0.25 MILES. CONTINUE ON ROAD RIGHT  
(EAST) AND GO APPROX. 0.4 MILES. TURN LEFT  
(NORTH) ON LEASE ROAD AND GO APPROX. 2.9  
MILES. TURN LEFT AND GO APPROX. 0.3 MILES TO  
A PROPOSED ROAD SURVEY ON THE LEFT.  
FOLLOW PROPOSED ROAD SURVEY SOUTH APPROX.  
0.2 MILES TO THIS LOCATION.



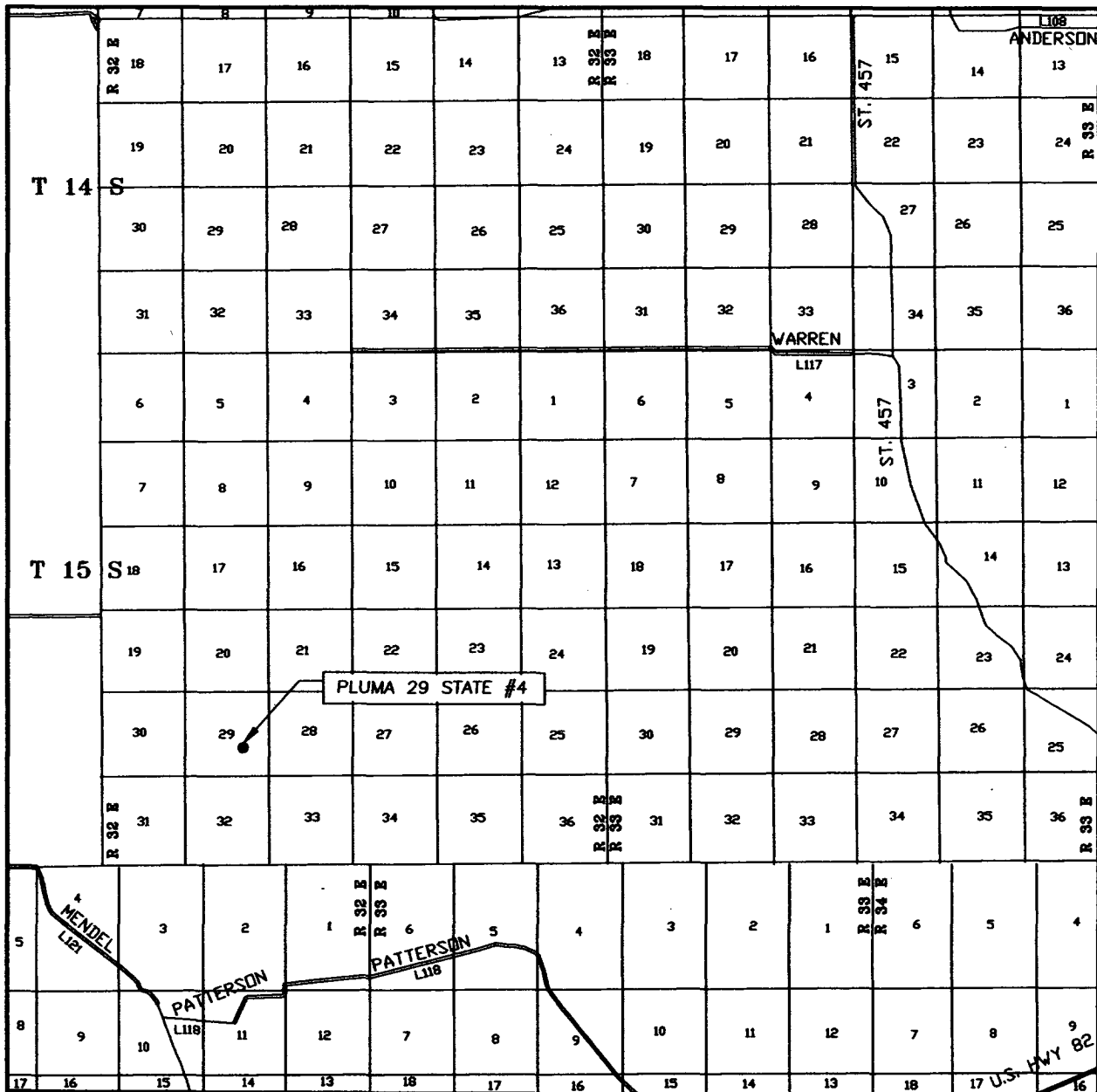
POGO PRODUCING COMPANY

PLUMA 29 STATE #4 WELL  
LOCATED 1800 FEET FROM THE SOUTH LINE  
AND 1650 FEET FROM THE EAST LINE OF SECTION 29,  
TOWNSHIP 15 SOUTH, RANGE 32 EAST, N.M.P.M.,  
LEA COUNTY, NEW MEXICO.



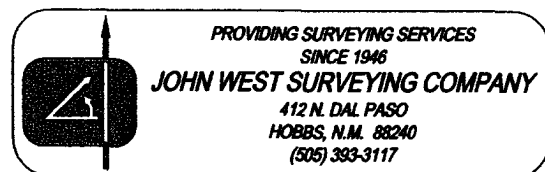
Survey Date: 03/02/05		Sheet 1 of 1 Sheets	
W.O. Number: 05.11.0349		Dr By: D. LOVE	Rev 1:N/A
Date: 03/09/05	Disk: CD#4	05110349	Scale: 1"=100'

# VICINITY MAP



SCALE: 1" = 2 MILES

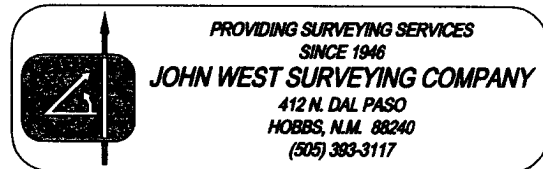
SEC. 29 TWP. 15-S RGE. 32-E  
 SURVEY N.M.P.M.  
 COUNTY LEA  
 DESCRIPTION 1800' FSL & 1650' FEL  
 ELEVATION 4323'  
 OPERATOR POGO PRODUCING COMPANY  
 LEASE PLUMA 29 STATE





CONTOUR INTERVAL:  
BUCKEYE NW, N.M. - 5'

U.S.G.S. TOPOGRAPHIC MAP  
BUCKEYE NW, N.M.



# BLOWOUT PREVENTER SYSTEM

3000 PSI

## Choke Manifold Assembly for 5M WP System

