

Submit 3 Copies To Appropriate District Office
District I
1625 N. French Dr., Hobbs, NM 88240
District II
1301 W. Grand Ave., Artesia, NM 88210
District III
1000 Rio Brazos Rd., Aztec, NM 87410
District IV
1220 S. St. Francis Dr., Santa Fe, NM 87505

State of New Mexico
Energy, Minerals and Natural Resources

Form C-103
May 27, 2004

OIL CONSERVATION DIVISION
1220 South St. Francis Dr.
Santa Fe, NM 87505

WELL API NO.	30-025-09659
5. Indicate Type of Lease STATE <input type="checkbox"/> FEE <input checked="" type="checkbox"/>	
6. State Oil & Gas Lease No.	141560
7. Lease Name or Unit Agreement Name	Cooper Jal Unit
8. Well Number	238 w
9. OGRID Number	193003
10. Pool name or Wildcat	JALMAT: Tansill, Yates & 7-Rivers

11. Elevation (Show whether DR, RKB, RT, GR, etc.)
3,303' KB

Pit or Below-grade Tank Application ☐ or Closure ☐

Pit type DIRT Depth to Groundwater 130 feet Distance from nearest fresh water well >1000 feet Distance from nearest surface water >1000 feet

Pit Liner Thickness: 12 mil Below-Grade Tank: Volume 200 bbls; Construction Material Synthetic

SUNDRY NOTICES AND REPORTS ON WELLS
(DO NOT USE THIS FORM FOR PROPOSALS TO DRILL OR TO DEEPEN OR PLUG BACK TO A DIFFERENT RESERVOIR. USE "APPLICATION FOR PERMIT" (FORM C-101) FOR SUCH PROPOSALS.)

1. Type of Well: Oil Well ☐ Gas Well ☐ Other ☒ Injector

2. Name of Operator

SDG Resources L. P.

3. Address of Operator

P. O. Box 1390
Montrose, CO 81401

4. Well Location

Unit Letter E : 1980 feet from the NORTH line and 330 feet from the WEST line
Section 25 Township 24S Range 36E NMPM LEA County

11. Elevation (Show whether DR, RKB, RT, GR, etc.)
3,303' KB

12. Check Appropriate Box to Indicate Nature of Notice, Report or Other Data

NOTICE OF INTENTION TO:

PERFORM REMEDIAL WORK ☐ PLUG AND ABANDON ☐
TEMPORARILY ABANDON ☐ CHANGE PLANS ☐
PULL OR ALTER CASING ☐ MULTIPLE COMPL ☐
OTHER: ☐

SUBSEQUENT REPORT OF:

REMEDIAL WORK ☐ ALTERING CASING ☐
COMMENCE DRILLING OPNS. ☐ P AND A ☐
CASING/CEMENT JOB ☐
OTHER: Ran & cemented 4 1/2" liner f/3012' to Surface. ☒

13. Describe proposed or completed operations. (Clearly state all pertinent details, and give pertinent dates, including estimated date of starting any proposed work). SEE RULE 1103. For Multiple Completions: Attach wellbore diagram of proposed completion or recompletion.

Objective: Ran and cemented 4 1/2" liner from 3,012' to surface with 175 sacks Star Lite "C" cement and Class "C".

02-28-05 - 03-08-05

- MIRU Pulling Unit.
- POOH with 2 3/8" IPC tubing and 5 1/2" x 2 3/8" Baker Model AD-1 tension packer.
- Ran GR-CCL from 3,038'-2,460'. Set 5 1/2" CIBP at 3,025'.
- Ran 4 1/2" liner (47 jts 11.5# J-55 & 43 jts 12.6# L80) from 3,012' to surface.
- Cemented liner with 150 sacks Star Lite "C" and 25 sacks Class "C" cement. Circulated with 39 barrels to surface.
- RIH with 3 7/8" bit & 6 - 3 1/2" drill collars. Drilled out Float Collar, Float Shoe. Pushed CIBP to 3,589'.
- POOH with 2 7/8" work string and laid down 3 7/8" bit & 6 - 3 1/2" drill collars.
- RIH with 4 1/2" x 2 3/8" Baker Model AD-1 Tension packer on 2 3/8" cement lined tubing to 2,972'.
- Circulated annulus w/ packer fluid. Set packer and test annulus to 380 psig for 30 minutes. Pulled pressure chart for NMOCD.
- Placed well on injection at 200 bwpd.
- Maximum permitted injection pressure is 600 psig.

I hereby certify that the information above is true and complete to the best of my knowledge and belief. I further certify that any pit or below-grade tank has been/will be constructed or closed according to NMOCD guidelines ☐, a general permit ☐ or an (attached) alternative OCD-approved plan ☐.

SIGNATURE Domingo Carrizosa TITLE Senior Petroleum Engineer DATE 3/9/05

Type or print name

E-mail address: Domingo@sdgresources.com Telephone No. 432-580-8500

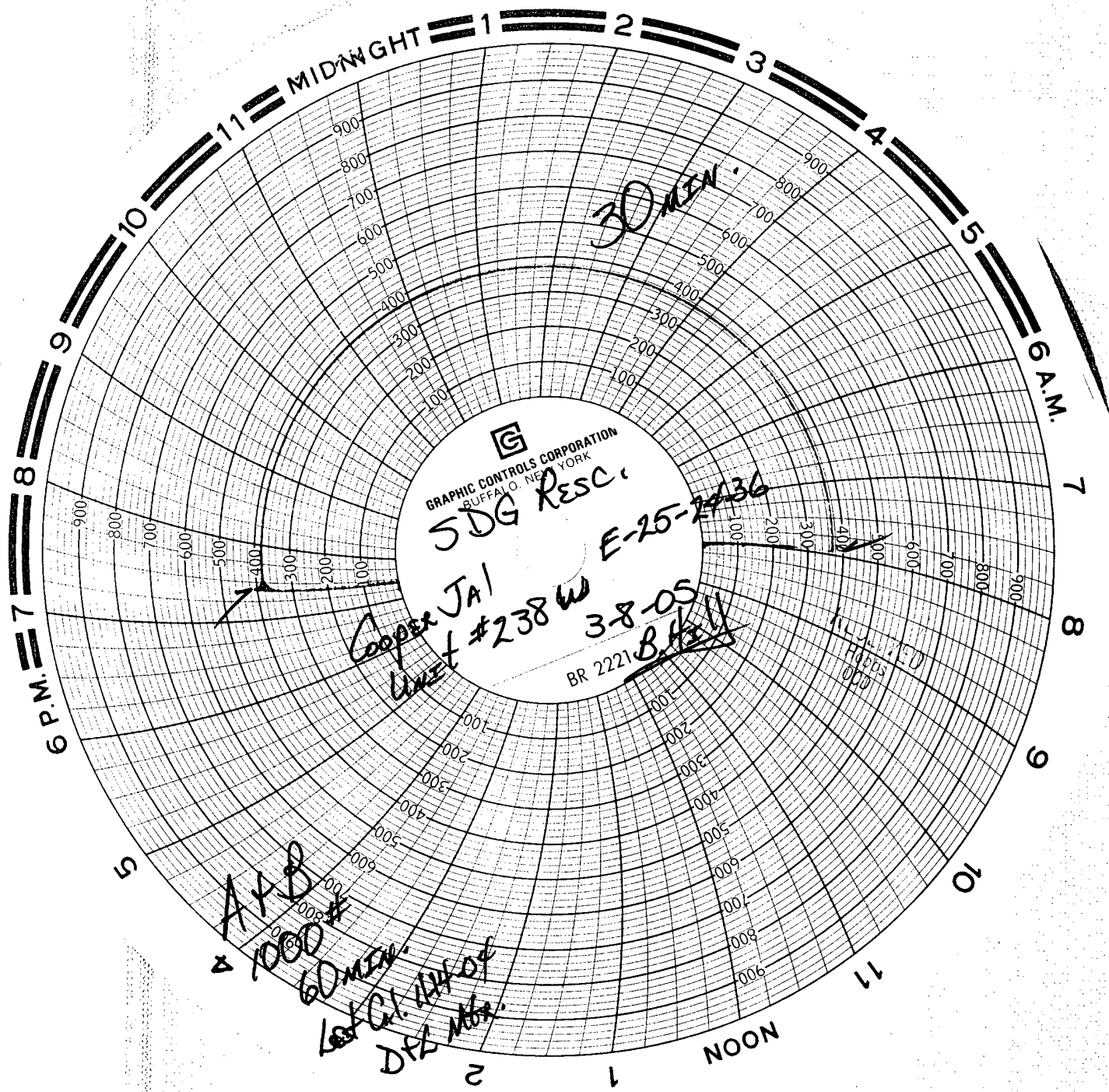
For State Use Only

APPROVED BY: Harry W. Wink TITLE OC FIELD REPRESENTATIVE II/STAFF MANAGER DATE MAR 14 2005

Conditions of Approval (if any):

WELLBORE SCHEMATIC AND HISTORY			
CURRENT COMPLETION SCHEMATIC		Cooper Jal Unit	
<div style="display: flex; justify-content: space-between;"> <div style="width: 45%;"> <p>Surface Csg</p> <p>Hole Size: 11 in</p> <p>Csg. Size: 8 5/8 in</p> <p>Set @: 289 ft</p> <p>Sxs Cmt: 150</p> <p>Circ: Yes</p> <p>TOC @: surf</p> <p>TOC by: circ</p> </div> <div style="width: 45%; text-align: right;"> <p>repaired bad csg 520 - 560' w/ 325 sx to Surf</p> </div> </div>		<p>LEASE NAME: Cooper Jal Unit</p> <p>STATUS: Active Water Injector</p> <p>WELL NO. (Formerly No. 142 238 W)</p> <p>API# 30-025-09659</p> <p>LOCATION: 1980 FNL & 330 FWL, Sec 25, T - 24S, R - 36E, Lee County, New Mexico</p> <p>SPUD DATE: 07/23/54 TD 3589 KB 3,312' DF 3,311'</p> <p>INT. COMP. DATE: 08/11/54 PBTD 3589 GL 3,303'</p>	
		<p>ELECTRIC LOGS:</p> <p>GR-N from 100 - 3588' (8-9-54 Schlumberger)</p> <p>GR-N (8-9-56 Schlumberger)</p> <p>GR-BHC-Acoustilog from 2050 - 3564' (8-31-71 Dresser Atlas)</p> <p>HYDROCARBON BEARING ZONE DEPTH TOPS:</p> <p>Yates @ 3000'</p> <p>Seven Rivers @ 3206'</p> <p>Queen @ 3575'</p>	
		<p>GEOLOGICAL DATA</p> <p>CORES, DST'S. or MUD LOGS:</p>	
		<p>CASING PROFILE</p> <p>SURF. 8 5/8" - set@ 289' Cmt'd w/150 sxs - circ cmt to surf.</p> <p>PROD. 5 1/2" - 15.5# J-55 set@ 3541' Cmt'd w/200 sxs - TOC @ 2291' Calc @ 80%. DV tool @ 1191' - pmp 100 sxs - TOC@ 560'</p> <p>LINER 4 1/2" - 47 jts 11.5# J-55 & 43 jts 12.6# L80, set @ 3012', cemented with 150 Star Lite C, tailed w/ 25 sxs Class C, circulated to sur</p>	
		<p>CURRENT PERFORATION DATA</p> <p>CSG. PERFS: 3032 - 50', 3078 - 89', 3109 - 20', 3132 - 42', 3156 - 64', 3176 - 80', 3224 - 28', & 3240 - 46' w/ 1 spf (82 holes)</p> <p>OPEN HOLE : 3541 - 89'</p> <p>3512 - 26' isolated w/CIBP@ 3350'</p>	
<p>TUBING DETAIL 3/8/2005 ROD DETAIL</p> <p>Length (ft) Detail</p> <p>0.00 KB</p> <p>2969.00 96 jts - 2 3/8" 4.7#, CL, J-55, 8rd EUE tbg.</p> <p>3.00 1- 5 1/2" x 2 3/8" Baker Model AD-1 packer Teflon coated</p> <p>2972.00 btm</p>			
<p>WELL HISTORY SUMMARY</p>			
<p>11-Aug-54 Initial completion interval: 3541 - 89' (Seven Rivers OH). Frac'd w/5,000 gals Dowell Petrofrac w/ 7,400#s sand. Well flowed 60% load of oil and died.</p> <p>07-Sep-54 Perf'd interval 3512 - 26' (Seven Rivers) and Frac'd w/4,000 gals Dowell Petrofrac w/5,000#s sand. Placed well on rod pump. Well produced 20 bwpd on pmp after 80% load oil returned.</p> <p>08-Nov-54 Removed tbg & rods from well. Shut-in well with 2" valve on national tbg head.</p> <p>12-Oct-71 Ran GR - N and Acoustilog. Set CIBP@ 3350' and dmp 2 sxs cmt on top of CIBP. Perforated (Jalmat) w/ 1 spf: 3032'-50', 3078'-89', 3109'-20', 3132'-42', 3156'-64', 3176'-80', 3224'-28', & 3240'-46'. Acidz'd perfs w/2200 gals 15% acid in 3 stages. Ran pkr on 2 3/8" CL tbg. Set pkr @ 2965'. Shut-in well pending water injection facilities.</p> <p>23-Feb-89 C/O fill from 3390 - 3310'. Acidized perfs (3032 - 3246') w/ 3,000 gals 15% NEFE HCL dropping 90 RCN ballsealers. AIR=3.2 bpm @ 1,000 psi. ISIP=750 psi. Ran pkr on 2 3/8" CL tbg. Set pkr @ 2976'. Initiated injection @ 200 bwpd, TP=550 psi.</p> <p>17-May-93 C/O fill (iron sulfide, paraffin & calcium carbonate scale) from 3165 - 3335' (170'). Acidz'd perfs (3032 - 3246') w/ 5000 gals 15% NEFE HCL, 1100 gals mutal solvent, and 110 gals Checker Sol (Micellar solvent) dropping 1100#s rocksalt in three block stages. Identified csg leak @ 520 - 560'. Pmp 325 sxs cmt down 5 1/2" and circ back to surface up 5 1/2" x 8 5/8" annulus. SIP=500 psi. WOC. D/O cmt from surface to 594'. Tst csg to 300 psi. OK. Ran pkr on 2 3/8" CL tbg. Set pkr @ 2972'. Tst pkr & csg. OK. Initiated injection @ 91 bwpd, TP=700 psi.</p> <p>4-Feb-02 Tagged fill using slick lineunit (1 1/4" x 5' sinker bar). Tagged fill at 3,048' (541' of fill).</p> <p>20-Jan-05 POOH w/ 2 3/8" IPC tbg and AD-1 Pkr. RIH with 4 3/4" and tagged at 3,045'. Drilled out CIBP at 3,350', pushed CIBP remains to 3,589'. Washed Perfs 3,032'-3,499' and open hole 3,541' to 3,589' with 199 bbls surfactant water w/ 2% KCl. Acid the Perfs and Open hole with 4,200 gals 15% NEFE HCl via Perf-Clean Tool. RIH with Injection string & packer. Found casing leak between 520' to 560'. Circulate with 60 barrels of 10# Super Vis Packer Fluid. Pressure test annulus to 500 psig, lost 60 psig in 1 minute. Packer at 2,972'.</p> <p>28-Feb-05 POOH w/ 2 3/8" IPC tbg and AD-1 Pkr. Ran GR-CCL f/ 3038' to 2460'. Set CIBP at 3025', dumped 9' cement on top. RIH with 65 - 4 1/2" liner f/ 3012' to surface. Cemented with 150 sacks Star Lite C, tailed w/ 25 sacks Class C, circulated cement to surface. RIH with 3 7/8" bit, drilled out Float Collar, Float Shoe. Pushed CIBP down to 3589'. Hydrotest 2 3/8" cement lined tubing to 2,969'. Set 4 1/2" Baker Model AD-1 (Teflon coated) at 2,972'. MIT annulus to 380 psig for 30 minutes - held.</p>			
<p>Production Csg.</p> <p>Hole Size: 7 7/8 in</p> <p>Csg. Size: 5 1/2 in</p> <p>Set @: 3541 ft</p> <p>Sxs Cmt: 300</p> <p>Circ: No</p> <p>TOC @: unknown</p> <p>TOC by:</p>		<p>OH Interval</p> <p>3541 - 89'</p> <p>Queen Top @ 3575'</p> <p>Remains of CIBP at 3589'</p>	
<p>PBTD: 3589 ft</p> <p>TD: 3589 ft</p> <p>OH ID: 4 3/4 in</p>			
<p>PREPARED BY: Larry S. Adams</p>		<p>UPDATED: 09-Mar-05</p>	

MAR 14 2005



GRAPHIC CONTROLS CORPORATION
BUFFALO, NEW YORK

SDG RESC.

30 MIN.

E-25-2436

COOPER JAI
UNIT #238 W

3-8-05

BR 2221 B. HILL

A+B
1000#

60 MIN.

Let C.I. ADV OF
DPL MGR.

ILLUSTRATED
FILES
000