

DISTRICT I
P.O. Box 1060, Hobbs, NM 88241-1060

DISTRICT II
P.O. Drawer DD, Artesia, NM 88211-0719

DISTRICT III
1000 Rio Brazos Rd., Aztec, NM 87410

DISTRICT IV
P.O. BOX 2088, SANTA FE, N.M. 87504-2088

State of New Mexico
Energy, Minerals and Natural Resources Department

OIL CONSERVATION DIVISION
P.O. Box 2088
Santa Fe, New Mexico 87504-2088

Form C-102
Revised February 10, 1994
Submit to Appropriate District Office
State Lease - 4 Copies
Fee Lease - 3 Copies

WELL LOCATION AND ACREAGE DEDICATION PLAT

☐ AMENDED REPORT

API Number 30-025-36389	Pool Code 86800	Pool Name Vacuum; Atoka-Morrow, North (Gas)
Property Code 29209	Property Name EUREKA 36 STATE	Well Number 2
GRID No. 162683	Operator Name GRUY PETROLEUM MANAGEMENT CO.	Elevation 4037'

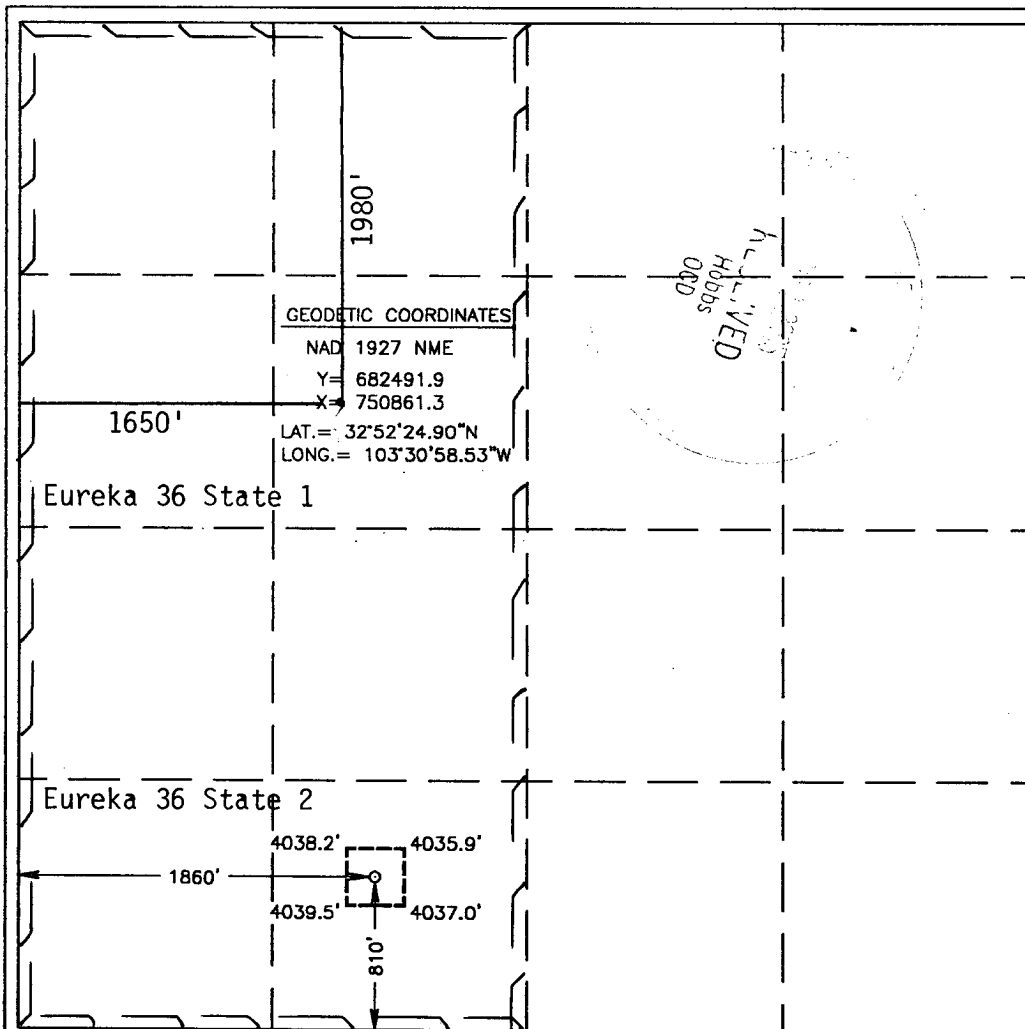
Surface Location

UL or lot No. N	Section 36	Township 16-S	Range 34-E	Lot Idn	Feet from the 810'	North/South line SOUTH	Feet from the 1860'	East/West line WEST	County LEA
--------------------	---------------	------------------	---------------	---------	-----------------------	---------------------------	------------------------	------------------------	---------------

Bottom Hole Location If Different From Surface

UL or lot No.	Section	Township	Range	Lot Idn	Feet from the	North/South line	Feet from the	East/West line	County
Dedicated Acres 320	Joint or Infill N	Consolidation Code	Order No.						

NO ALLOWABLE WILL BE ASSIGNED TO THIS COMPLETION UNTIL ALL INTERESTS HAVE BEEN CONSOLIDATED
OR A NON-STANDARD UNIT HAS BEEN APPROVED BY THE DIVISION



OPERATOR CERTIFICATION

I hereby certify the the information
contained herein is true and complete to the
best of my knowledge and belief.

Zeno Farris

Signature

Zeno Farris

Printed Name

Mgr Operations Admin

Title

March 7, 2005

Date

SURVEYOR CERTIFICATION

I hereby certify that the well location shown
on this plat was plotted from field notes of
actual surveys made by me or under my
supervision, and that the same is true and
correct to the best of my belief.

MARCH 27, 2003

Date Surveyed

AWB

Signature & Seal of
Professional Surveyor

Ronald J. Eidson 3/28/03
03.11.0359

Certificate No. RONALD J. EIDSON 3239
CARY EIDSON 12641