

Submit 3 Copies To Appropriate District Office  
District I  
1625 N. French Dr., Hobbs, NM 88240  
District II  
1301 W. Grand Ave., Artesia, NM 88210  
District III  
1000 Rio Brazos Rd., Aztec, NM 87410  
District IV  
1220 S. St. Francis Dr., Santa Fe, NM 87505

State of New Mexico  
Energy, Minerals and Natural Resources

Form C-103  
June 19, 2008

HOBBS OCO

JUN 23 2011

RECEIVED

RECEIVED

RECEIVED

RECEIVED

RECEIVED

RECEIVED

RECEIVED

RECEIVED

RECEIVED

RECEIVED

RECEIVED

RECEIVED

RECEIVED

RECEIVED

RECEIVED

RECEIVED

RECEIVED

RECEIVED

RECEIVED

RECEIVED

RECEIVED

RECEIVED

RECEIVED

RECEIVED

RECEIVED

RECEIVED

RECEIVED

RECEIVED

RECEIVED

RECEIVED

RECEIVED

RECEIVED

RECEIVED

RECEIVED

RECEIVED

RECEIVED

RECEIVED

RECEIVED

RECEIVED

RECEIVED

RECEIVED

RECEIVED

RECEIVED

RECEIVED

RECEIVED

RECEIVED

RECEIVED

RECEIVED

RECEIVED

RECEIVED

SOIL CONSERVATION DIVISION  
1220 South St. Francis Dr.  
Santa Fe, NM 87505

WELL API NO. 30-025-09559
5. Indicate Type of Lease STATE <input type="checkbox"/> FEE <input checked="" type="checkbox"/>
6. State Oil & Gas Lease No. 306443
7. Lease Name or Unit Agreement Name Cooper Jal Unit
8. Well Number 114
9. OGRID Number 263848
10. Pool name or Wildcat Jalmat; T-Y-7R: Langlie Mattix; 7R-Q-G
11. Elevation (Show whether DR, RKB, RT, GR, etc.) 3320' GL

12. Check Appropriate Box to Indicate Nature of Notice, Report or Other Data

NOTICE OF INTENTION TO:

PERFORM REMEDIAL WORK ☐ PLUG AND ABANDON ☐  
TEMPORARILY ABANDON ☐ CHANGE PLANS ☐  
PULL OR ALTER CASING ☐ MULTIPLE COMPL ☐  
DOWNHOLE COMMINGLE ☐

SUBSEQUENT REPORT OF:

REMEDIAL WORK ☐ ALTERING CASING ☐  
COMMENCE DRILLING OPNS. ☐ P AND A ☐  
CASING/CEMENT JOB ☐

OTHER: ☐

OTHER: Re-entered Well for Purpose of Injection ☒

13. Describe proposed or completed operations. (Clearly state all pertinent details, and give pertinent dates, including estimated date of starting any proposed work). SEE RULE 1103. For Multiple Completions: Attach wellbore diagram of proposed completion or recompletion.

- 1.) MIRU Pulling Unit, Reverse Unit and Above Ground Steel Pit. 3/1/11
- 2.) Picked up 4 3/4" Bit and 3 1/2" drill collars and started drilling out cement to 33'. POOH w/ Bit.
- 3.) RIH w/ cone buster mill & continued drilling out cement to 3130'; POOH w/ mill.
- 4.) RIH w/ 4 3/4" Bit, RU Swivel & continued drilling to 3540'; POOH w/ Bit.
- 5.) Perforated Jalmat: 2978-2998, 3001-3013, 3021-3040, 3042-3044, 3052-3060, 3063-3072, 3080-3093, 3104-3112, 3114-3130, 3138-3140, 3146-3150, 3174-3183, 3185-3194, 3242-3252, 3306-3310, 3323-3330, 3392-3397, 2 JSPF, 318 holes.
- 6.) RIH w/ Arrow Set 1X Pkr & set @ 2945'; Pumped 15,338 gallons acid, dropping 200 ball sealers.
- 7.) POOH, laying down work string; RIH w/ new on/off tool; circulated packer fluid.
- 8.) Ran preliminary MIT, held (Top Perf- 2978'). RDMO Pulling Unit, cleaned location, cleaned and disposed of pit fluids.
- 9.) Ran MIT for OCD, held. Well is still shut in, will put on injection w/ NMOCD's Approval. 3/15/11
- 10.) C-108 approved 6/13/11. WFX-888

Spud Date:

3/2/11

Rig Release Date:

3/15/11

I hereby certify that the information above is true and complete to the best of my knowledge and belief.

SIGNATURE

*Melanie Reyes*

TITLE

Engineer Assistant

DATE

6/16/11

Type or print name

Melanie Reyes

E-mail address: melanie.reyes@resacaexploitation.com PHONE: (432)580-8500

For State Use Only

APPROVED BY:

*Mary Brown*

TITLE

Compliance Officer

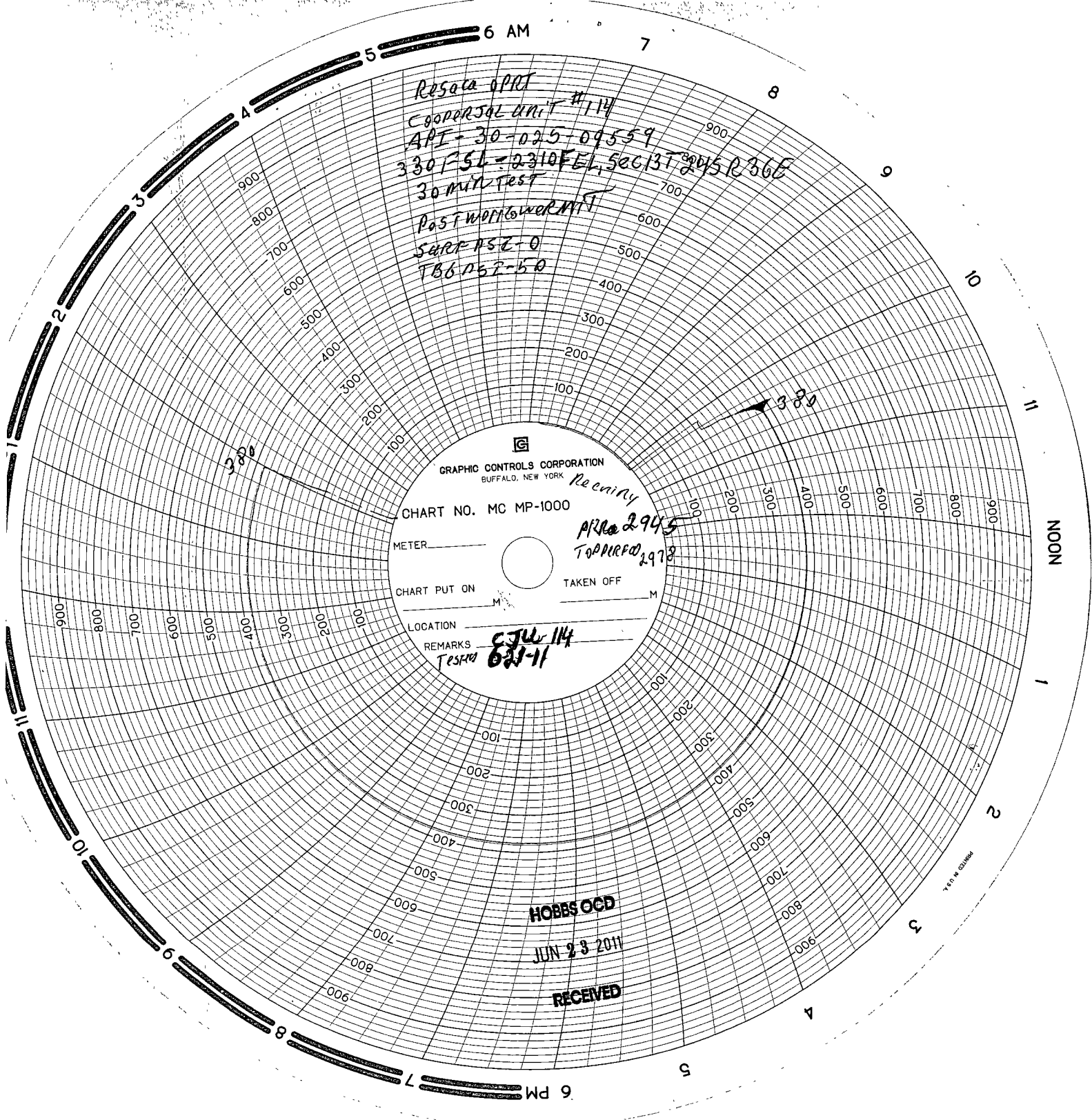
DATE

6/23/2011

Conditions of Approval (if any)

CURRENT COMPLETION SCHEMATIC						LEASE NAME <b>Cooper Jal Unit</b>		WELL NO <b>114</b>	
						STATUS P&A'd (3-22-01) Water Injector		API# <b>30-025-09559</b>	
LOCATION 330 FSL & 2310 FEL, Sec 13, T - 24S, R - 36E, Lee County, New Mexico									
SPUD DATE TD 3550 KB 3,327' DF									
INT COMP DATE 09/21/54 PBTD 3540 GL 3,320'									
<b>ELECTRIC LOGS</b> GR-N from 3200 - 3526' (9-20-54 The Western Co ) GR-N from 2900 - 3493' (12-16-64 Welox)						<b>GEOLOGICAL DATA</b> <b>CORES, DST'S or MUD LOGS</b>			
<b>HYDROCARBON BEARING ZONE DEPTH TOPS</b> Yates @ 2976' 7-Rivers @ 3345' Queen @ 3461'									
<b>CASING PROFILE</b> SURF 8 5/8" - 20#, J-55 set@ 280' Cmt'd w/250 sxs - circ cmt to surf PROD. 5 1/2" - 15.5#, J-55 set@ 3438' Cmt'd w/200 sxs - TOC @ 2385' f/ surf by calc DV tool @ 1241' - pmp 100 sxs LINER None TOC@ 715 by calc									
<b>CURRENT PERFORATION DATA</b> CSG PERFES. 3423 - 29' w/ 2 spf (14 holes) Perfd Yates f/ 2978'-2998', 3001'-3013' 3021'-3040', 3042'-3044', 3052'-3060', 3063'-3072', 3080'-3083', 3104'-3112', 3080'-3083', 3104'-3112', 3114'-3130', 3138'-3140', 3146'-3150', 3174'-3183', 3185'-3194' 3242'-3252', 3306'-3310' and 3323'-3330', 2 JHPF, Perfd 7-Rivers f/ 3392'-3397', 2 JHPF.						<b>OPEN HOLE</b> 3438 - 3550'			
<b>TUBING DETAIL</b> 2 3/8 X 5 1/2 arrowset 1 X PKR 1 7/8 F profile nipple on off tool 89 jts 2 3/8 IPC 8rd TBG 2', 8', 10', 2 3/8 8rd IPC TBG subs PKR @ 2945						<b>ROD DETAIL</b>			
<b>WELL HISTORY SUMMARY</b> 21-Sep-54 Initial completion interval 3438 -3550' ( <b>7 RVRS/Qn OH</b> ) IP =90 bopd, 0 bwpgd, & 101 Mcfgpd (flw'd - no stimulation) 16-Dec-64 Perfd 7-Rivers f/ 3423 - 29 w/ 2 spf (14 holes). Frac OH w/ 10,000 gals lse oil, 10,000#'s 20/40 & 10,000#'s 10/20 sand, at AIR= 31 6 bpm & 1400 psi Plug back to 3440' w/ sand & Frac perfs 3423-29' w/ 5,000 gals lse oil, 7,500#'s 20/40 sand and 2500#'s 1020 sand @ 24 bpm & 1700 psi 29-Jul-71 Converted to Injector C/O from 3482 - 3540' RIH with pkr on 2 3/8" CL tbg Set pkr @ 3375' Initiated injection 9-Nov-79 Made TD check with 1" sinker bar. Measured TD at 3516' (34' of fill). 12-Jan-91 C/O fill using bailer from 3521 - 3535' Ran 5 1/2" pkr on 2 3/8" cmt lined tbg Set pkr @ 3371' Return to injection 21-Mar-00 TOO H & LD pkr & 2 3/8" CL tbg Set CIBP w/ WL @3400' Spot 75 sxs cmt on CIBP WOC Tag TOC @ 2697' S Spot 25 sxs cmt from 1300 - 1100' WOC. Tag TOC @ 1090' Perfd 6 shots@350' Pmp 120 sxs cmt down 5 1/2" and circ to surf through 5 1/2 x 8 5/8" annulus Installed Dry hole marker & cleaned location <b>NMOCD notified - well P&amp;A'd 3-22-2001</b> 2-Mar-11 Pick up 4 3/4 bit and 3 1/2 D C , tag CMT @ 10', dnll out CMT to 32', <b>DRLG from 32' to 3540'</b> took 8 days, circulate clean, POOH laying down D.C.'s and 4 3/4 bit Perfd Yates f/ 2978'-2998', 3001'-13' 3021'-40', 3042'-44', 3052'-60', 3080'-83', 3104'-12', 3114'-30', 3138'-40', 3146'-50', 3174'-83', 3185'-94' 3242'-52', 3306'-10', 3323'-30', & 3392'-97', 2 JHPF, Perfd 7-Rivers f/ 3342'-3330', 2 JHPF POOH laying down D C 's and 4 3/4 bit, set pkr at 3420', load and test CSG, held Injection rate of 6 BPM @ 2200 psig, establish 30 BBLS acid, drop 50 sacks block, had 12 sacks block on formation, well pressured up to 5000 psig, could no longer pump into formation. Release PKR, POOH with PKR, perforate <b>Set PKR at 2945'</b> , load and test CSG, held, establish injection rate of 6 BPM at 1200 PSI, pump 15,338 gallons acid dropping ballsealers @ 6 BPM @ AVG PSI of 1100 psig, displace to bottom PERF, ISIP @ 400 psig, POOH laying down workstrng, RIH w/ new on and off tool, circulate PKR fluid, run MIT test, held, job complete									
TOC @ 2385' By Calc									
Y @ 2976'									
2978'-2998'									
3001'-3013'									
3021'-3040'									
3042'-3044'									
3052'-3060'									
3063'-3072'									
3080'-3083'									
3104'-3112'									
3080'-3083'									
3104'-3112'									
3114'-3130'									
3138'-3140'									
3146'-3150'									
3174'-3183'									
3185'-3194'									
3242'-3252'									
3306'-3310'									
3323'-3330'									
Production Csg. Hole Size 7 7/8 in Csg Size 5 1/2 in Set @ 3438 ft Sxs Cmt 300 Circ No TOC @ 715 f/ surf, TOC by calc						7-R @ 3345' 3392'-3397' 3423-3429'			
OH Interval 3438 - 3550'									
Q @ 3461'									
PBTD 3540 ft TD 3550 ft									
OH IC 4 3/4 in									
PREPARED BY: Larry S Adams						UPDATED 17-Jun-11			

17-Jun-11



Resaca OPRT  
Cooper's unit #114  
API-30-025-09559  
330-51-2310 FEL SEC 13T 245 R 366  
30 min test  
Past work lower MT  
SURF PSZ-0  
TBB 152-50

GRAPHIC CONTROLS CORPORATION  
BUFFALO, NEW YORK  
CHART NO. MC MP-1000  
METER \_\_\_\_\_  
CHART PUT ON \_\_\_\_\_ M  
TAKEN OFF \_\_\_\_\_ M  
LOCATION \_\_\_\_\_  
REMARKS  
CJU 114  
TESTED 6-23-11

HOBBS OGD  
JUN 23 2011  
RECEIVED