

State of New Mexico
Energy, Minerals and Natural Resources

Form C-103

June 19, 2008

OIL CONSERVATION DIVISION

1220 South St. Francis Dr.

Santa Fe, NM 87505

WELL API NO. 30-025-09642
5. Indicate Type of Lease STATE <input type="checkbox"/> FEE <input checked="" type="checkbox"/>
6. State Oil & Gas Lease No. 306443
7. Lease Name or Unit Agreement Name Cooper Jal Unit
8. Well Number 148
9. OGRID Number 263848
10. Pool name or Wildcat Jalmat; T-Y-7R/ Langlie Mattix; 7R-Q-G

SUNDRY NOTICES AND REPORTS ON WELLS
(DO NOT USE THIS FORM FOR PROPOSALS TO DRILL OR TO DEEPEN OR PLUG BACK TO A DIFFERENT RESERVOIR. USE "APPLICATION FOR PERMIT" (FORM C-101) FOR SUCH PROPOSALS)

1. Type of Well: Oil Well ☐ Gas Well ☐ Other ☒ Injector2. Name of Operator
Resaca Operating Company3. Address of Operator
2509 Maurice Road, Odessa, TX 79763

4. Well Location
Unit Letter J : 2310 feet from the South line and 2310 feet from the East line
Section 24 Township 24S Range 36E NMPM Lea County

11. Elevation (Show whether DR, RKB, RT, GR, etc.)
3318' GL

12. Check Appropriate Box to Indicate Nature of Notice, Report or Other Data

NOTICE OF INTENTION TO:

PERFORM REMEDIAL WORK ☐ PLUG AND ABANDON ☐
TEMPORARILY ABANDON ☐ CHANGE PLANS ☐
PULL OR ALTER CASING ☐ MULTIPLE COMPL ☐
DOWNHOLE COMMINGLE ☐

SUBSEQUENT REPORT OF:

REMEDIAL WORK ☐ ALTERING CASING ☐
COMMENCE DRILLING OPNS. ☐ P AND A ☐
CASING/CEMENT JOB ☐

OTHER: ☐OTHER: Re-Entered Well for Purpose of Injection ☒

13. Describe proposed or completed operations. (Clearly state all pertinent details, and give pertinent dates, including estimated date of starting any proposed work). SEE RULE 1103. For Multiple Completions: Attach wellbore diagram of proposed completion or recompletion.

- 1.) MIRU Pulling Unit, Reverse Unit and Above Ground Steel Pit. 3/16/11
- 2.) Drilled out cement plugs and CIBP's to 3700'; circulated well clean.
- 3.) RU Wireline Co. & perforate Yates f/ 3236'-3242' and 7Rivers f/ 3380'-3381', 3431'-3434', 3439'-3442'.
- 4.) RIH w/ 5 1/2" Composite Plug @ 2960'; RU Testers & RIH w/ 3 1/2" Shoe, 3 1/2" jt., 3 1/2" float collar, 92- 3 1/2" jts.
- 5.) Tested tubing, test good; Set end of shoe @ 2958'; Pumped 185 sx cement, installed 3 1/2" wiper plug, flush w/ 25 bbls, circ'd 2.5 bbls to pit.
- 6.) RIH w/ 2 3/4" Bit on 2 3/8" tbg, tagged float collar @ 2930'; PU Swivel, drilled up float collar, and shoe.
- 7.) POOH w/ Bit, RIH w/ Mill, tagged plug @ 2958'; PU Swivel & drilled out plug.
- 8.) RIH w/ 3 1/2" Arrow Set 1-X Packer & set Packer @ 2928' (Top Perf- 3018'); pressure test to 360 psi, test good.
- 9.) Acidized Perfs 3018'-3442' & OH 3465'-3700' w/ 20,000 gallons 15% (90/10 acid/xylene) & 18,000#'s salt.
- 10.) POOH & laid down work string; RU Testers, RIH w/ 2 3/8" IPC tbg, tested tbg, test good.
- 11.) Circulated 45 bbls Packer fluid, latched to 3 1/2" Packer & tested annulus to 400 psi, test good.
- 12.) RDMO Pulling Unit, clean location, clean and dispose of pit fluids. Well shut in, will put on injection w/ NMOCD's Approval. 4/5/11
- 13.) C-108 Approved 6/13/11. WFX-888

Spud Date:

3/16/11

Rig Release Date:

4/5/11

I hereby certify that the information above is true and complete to the best of my knowledge and belief.

SIGNATURE

TITLE

Engineer Assistant

DATE

6/16/11

Type or print name

Melanie Reyes

E-mail address:

melanie.reyes@resacaexploitation.com

PHONE: (432)580-8500

For State Use Only

APPROVED BY:

TITLE

Compliance Officer

DATE

6/23/2011

Conditions of Approval (if any):

WELLBORE SCHEMATIC AND HISTORY

CURRENT COMPLETION SCHEMATIC

LEASE NAME

Cooper Jal Unit

WELL NO

148

STATUS

P&A'd

(3-21-01)

Oil

API#

30-025-09642

LOCATION

2310 FSL & 2310 FEL, Sec 24, T - 24S, R - 36E, Lee County, New Mexico

SPUD DATE

03/06/54

TD

3700

KB

3,328'

DF

INT COMP DATE

03/28/54

PBD

3700

GL

3,318'

ELECTRIC LOGS

GEOLOGICAL DATA

CORES, DST'S or MUD LOGS

GR-N from 50 - 3553' (3-28-54 Schlumberger)

Cored 3005 - 3230' Avg Por = 21 1%
Avg Perm = 37 md, Avg Sw = 38 9%

HYDROCARBON BEARING ZONE DEPTH TOPS

Yates @ 3018'

7-Rivers @ 3244'

Queen @ 3615'

CASING PROFILE

SURF 8 5/8" - 28#, J-55 set @ 279' Cmt'd w/135 sxs - circ cmt to surf

PROD 5 1/2" - 14#, J-55 set @ 3465' Cmt'd w/300 sxs - TOC @ 1885' from surf DV tool @ 1209' - pmp 150 sxs - TOC unknown

LINER None

CURRENT PERFORATION DATA

CSG PERFS

OPEN HOLE

3465 - 3700'

09-Aug-46 Open Hole (7-Rivers) f/ 3465 - 3550'

25-Aug-59 Perf'd (Yates) w/ 2 spf 3222-30', 3235-39', & 7-Rivers 3296 - 3306' (44 holes total)

18-Jul-91 CMT SQZ'D Yates 3222-30', 3235-39', & 7-Rivers 3296 - 3306' w/2 spf (44 holes total)

14-Oct-93 Perf'd Yates w/ 2 spf (.56" dia hole -120 deg phasing) 3018'-3042', 3045' -54', 3059'-3066', 3070'-89', 3100'-14',
3127'-42' & 3146'-74', (232 holes total)

01-Apr-11 Perf'd 7-Rivers f/ 3439'-3442', 3431'-343', 3380'-3383', 3360'-3365', 3290'-3307' & 3248'

01-Apr-11 Perf'd Yates f/ 3236'-3242', 3220'-3233', 3192'-3195', & 3182'-3190'

TUBING DETAIL

ROD DETAIL

92 3-1/2" J-55 9 2# Super Max

3-1/2" 1 6 Float Collar

1 3-1/2" J-55 9 2# Super Max

3-1/2" 1.8 Shoe @ 2958'

WELL HISTORY SUMMARY

09-Aug-46 Initial completion interval. 3465 - 3550' (7 RVRS/QUEEN OH). Frac'd w/ 4,000 gals lse oil & 6,000#s sand
IP= 227 bopd, 0 bwpgd, & 194 Mcfgpd (flowing)

15-Oct-56 Refrac'd OH w/ 19,000 gals lse oil & 33,000#s sand

25-Aug-59 Set CIBP @ 3375' & dmp'd 5 sxs cmt on top. Perf'd (Yates) intervals w/ 2 spf 3222-30', 3235-39', & 3296 - 3306' (44 holes total). Frac'd perfs w/15,000 gals lse oil & 23,300#s sand

14-Jun-71 CONVERTED TO LANGLEY MATTIX INJECTOR Drd out CIBP @ 3375' & C/O to TS @ 3540' Ran pkr on 2 3/8" CL tbg set pkr @ 3391' Initiated injection. Note- Yates perfs are not sqz'd & above pkr.

01-Oct-79 SI Well Discovered 350 psi annulus pressure Bled off pressure in 3 days

26-Nov-79 Set BP @ 3350' & cmt sqz'd perf 3222 - 3306' w/ 200 sxs @ 1000 psi. D/O & tst sqz to 1000 psi OK D/O CIBP and C/O open hole from 3465 - 3550' RIH with pkr on 2 3/8" CL tbg Set pkr @ 3391' and placed well on injection

14-Oct-84 Aczd'd OH w/1,000 gals

11-Mar-86 C/O & side-jet wash OH Aczd OH w/2,000 gals Found csg leaks @ 170' & old sqz'd perfs 3222'-3306'. Perf'd 2 holes @ 260' & sqz'd w/ 250 sxs - circ cmt to surface Sqz'd cmt into old perfs 3222 - 3306' w/ 250 sxs. D/O and tst csg (0-3400') to 600 psig. Lost 20 psig in 30 minutes. Returned well to injection

25-Feb-88 Tst csg to 400 psi. Good tst Aczd OH w/ 3000 gals. Did not C/O. Ran new flourline tbg. Returned well to injection

10-Mar-88 Step rate tst indicates frac pressure (surface) is 1020 psi

18-Jul-91 Failed MIT. Shut-in well. (Sqz'd perfs 3222 - 3306' leaking)

14-Oct-93 Set CIBP @ 3354' & dmp 35' cmt on top Perf w/ 2 spf (.56" dia hole -120 deg phasing) 3018'-3042', 3045' -54', 3059'-3066', 3070'-89', 3100'-14', 3127'-42', & 3146'-74' (232 holes total). Frac w/45,360 gals gel wtr carrying 184,140#s 12/20 Brady sand & 40,900#s 12/20 resin coated sand AIR=34 bpm, PM=3800 - 2100 psi ISIP=1600 psi C/O sand f/ 3085'-3316'. Ran tubing pump and rods. After WO: 26 bopd, 286 bwpgd, & 33 Mcfgpd.

16-Mar-01 Set CIBP @ 2975 on WL. Circ well w/gelled brine Spot 35 sxs cmt from 2975 - 2700'. WOC Tag TOC @ 2680'.

Perf 6 holes @ 1400'. Sqz 50 sxs cmt into perfs to 850 psi WOC Tag TOC @ 1145'. Perf 6 holes @ 400'. Sqz 150 sxs cmt into perfs to 750 psig. WOC Tag TOC @ 145' Spot cmt plug from 30' to surface Cut off wellhead and cap 5 1/2" casing Installed Dry hole marker & cleaned location NMOCD notified - well P&A'd 3-21-2001.

16-Mar-11 Ran in w/4 3/4" bit 3 drill collars tagged cmt @ 92', picked up swivel drilled from 175' to 452', circ'd well clean, test casing to 450#, ran in w/ bit tagged @ 1109, picked up swivel drilled from 1150' to 3700' in 8 days circulated well clean Perf'd 7-Rivers f/ 3439'-3442', 3431'-343', 3380'-3383', 3360'-3365', 3290'-3307' & 3248', Perf'd Yates f/ 3236'-3242', 3220'-3233', 3192'-3195' & 3182'-3190' ran w/ 5 1/2" composite plug & set @ 2960', ran in w/ 3 1/2" Shoe, 11-3 1/2" jt, 3 1/2" Float Collar, 92 3 1/2" Jts, test tbg to 7000 psi, test good, nipple down BOP landed tbg, set end of shoe @ 2,958'. Pumped 110 bbls broke circulation, pumped 30 BBLs lime water, 5 BBLs fresh, 185 sxs cmt install 3 1/2" wiper plug, flush w/ 25 bbls, circulated 2 5 BBLs cmt to pit, ran in w/2-3/4" bit on 2 3/8" tbg, tagged float collar @ 2930', drilled up float collar, shoe, tagged composite plug made 8" stop making hole, pulled 14 jts. Pulled out w/bit, ran in w/mill, tagged plug 2958', drilled up plug, ran in w/10 jts, circ'd well clean, pulled out w/tbg, ran in w/3-1/2" arrow set 1X 2-3/8" work string test to 5000 PSI, set @ 2928, press to 360 psi, test good. Acidized perf 3018-3442', released from Pkr w/on & off tool, pulled and laid work string, ran in w/ 2 3/8" IPC tbg test to 6,000 psig, test good. Circulated 45 BBL packer fluid, latch to 3-1/2" Pkr test to 400 PSI test good

Surface Csg

Hole Size 12 1/4 in
Csg Size 8 5/8 in
Set @ 279 ft
Sxs Cmt 135
Circ Yes
TOC @ surf
TOC by circPerf'd 6 holes
@ 400'

TOC @ unknown

DV Tool @ 1209'

Perf'd 6 holes
@ 1400'TOC @ 1885'
By CalcHole Size 4 7/8 in
Csg Size 3 1/2 in
Set @ 2958' ft
Sxs Cmt 185
Circ Yes

CIBP @ 2976'

PRK @ 2928'

Yates @ 3018'

3018'-3042'

3045'-3054'

3059'-3066'

3070'-3089'

3100'-3114'

3127'-3142'

3146'-3174'

3182'-3190'

3192'-3195'

3220'-3233'

3236'-3242'

7-Rivers @ 3244'

3248'-3252'

3290'-3307'

3360'-3365'

3380'-3380'

3431'-3434'

3439'-3442'

Queen @ 3615'

OH Interval

3465 - 3700'

Production Csg

Hole Size 7 7/8 in
Csg Size 5 1/2 in
Set @ 3465 ft
Sxs Cmt 450
Circ No
TOC @ unknown
TOC byPBD 3700 ft
TD 3700 ft

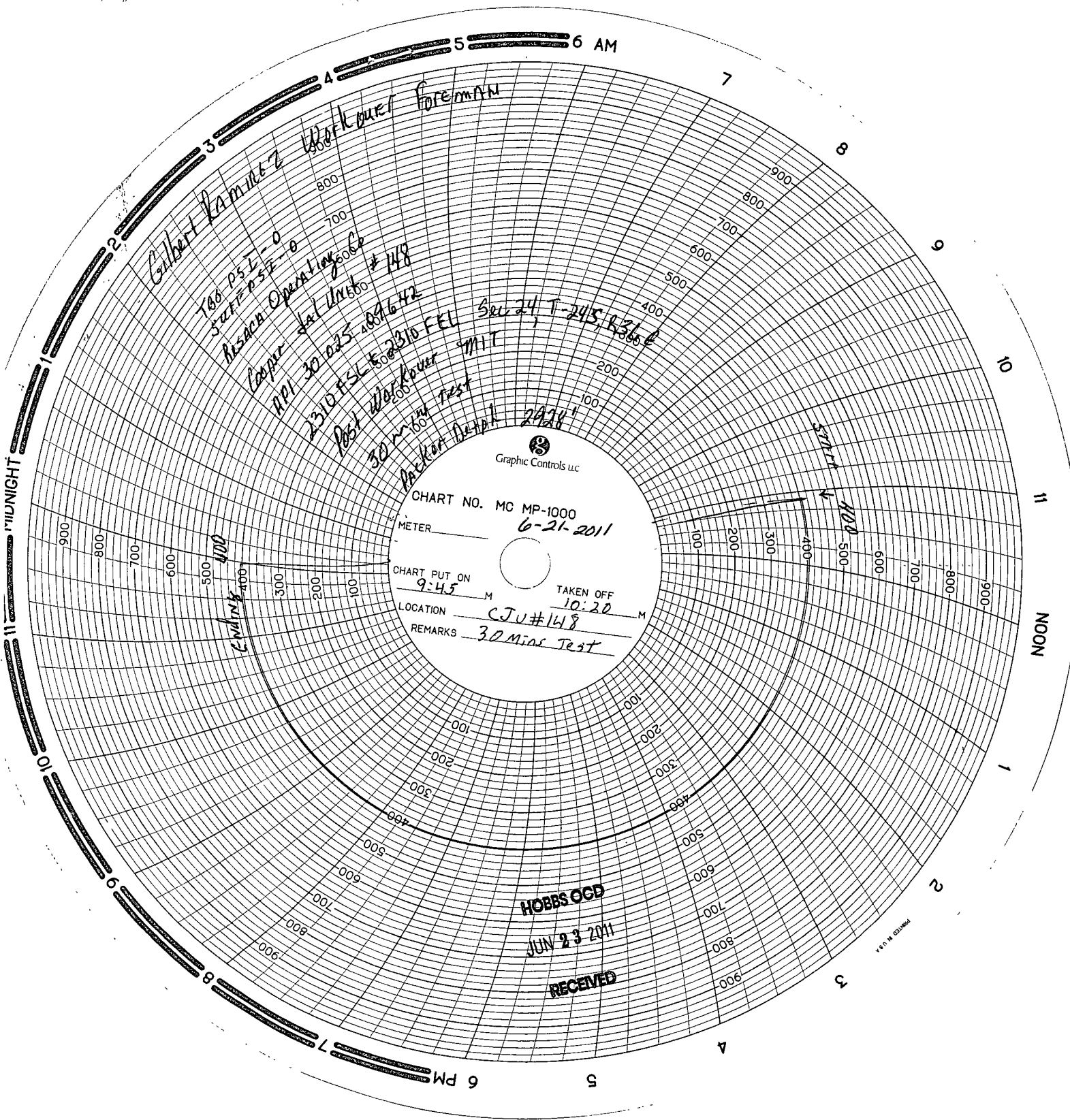
OH ID 4 3/4 in

PREPARED BY

Larry S. Adams

UPDATED:

17-Jun-11



MIDNIGHT

NOON

HOBBS OCD

JUN 23 2011

RECEIVED