

Submit 3 Copies To Appropriate District
Office
District I
1625 N. French Dr., Hobbs, NM 88240
District II
1301 W. Grand Ave., Artesia, NM 88210
District III
1000 Rio Brazos Rd., Aztec, NM 87410
District IV
1220 S St Francis Dr., Santa Fe, NM
87505

State of New Mexico
Energy, Minerals and Natural Resources

Form C-103

June 19, 2008

OIL CONSERVATION DIVISION

1220 South St. Francis Dr.
Santa Fe, NM 87505

WELL API NO. 30-025-09649
5. Indicate Type of Lease STATE <input type="checkbox"/> FEE <input checked="" type="checkbox"/>
6. State Oil & Gas Lease No. 306443
7. Lease Name or Unit Agreement Name Cooper Jal Unit
8. Well Number 230
9. OGRID Number 263848
10. Pool name or Wildcat Jalmat; Tansill-Yates-7Rivers

SUNDRY NOTICES AND REPORTS ON WELLS (DO NOT USE THIS FORM FOR PROPOSALS TO DRILL OR TO DEEPEN OR PLUG BACK TO A DIFFERENT RESERVOIR USE "APPLICATION FOR PERMIT" (FORM C-101) FOR SUCH PROPOSALS.)	
1. Type of Well: Oil Well <input type="checkbox"/> Gas Well <input type="checkbox"/> Other <input checked="" type="checkbox"/> Injector	
2. Name of Operator Resaca Operating Company	
3. Address of Operator 2509 Maurice Road, Odessa, TX 79763	
4. Well Location Unit Letter <u>F</u> : <u>1650</u> feet from the <u>North</u> line and <u>2310</u> feet from the <u>West</u> line Section <u>25</u> Township <u>24S</u> Range <u>36E</u> NMPM Lea County	
11. Elevation (Show whether DR, RKB, RT, GR, etc.) 3302' GL	

12. Check Appropriate Box to Indicate Nature of Notice, Report or Other Data

NOTICE OF INTENTION TO:

PERFORM REMEDIAL WORK ☐ PLUG AND ABANDON ☐
TEMPORARILY ABANDON ☐ CHANGE PLANS ☐
PULL OR ALTER CASING ☐ MULTIPLE COMPL ☐
DOWNHOLE COMMINGLE ☐

SUBSEQUENT REPORT OF:

REMEDIAL WORK ☐ ALTERING CASING ☐
COMMENCE DRILLING OPNS. ☐ P AND A ☐
CASING/CEMENT JOB ☐

OTHER: ☐

OTHER: Re-Entered Well for Purpose of Injection ☒

13. Describe proposed or completed operations. (Clearly state all pertinent details, and give pertinent dates, including estimated date of starting any proposed work). SEE RULE 1103. For Multiple Completions: Attach wellbore diagram of proposed completion or recompletion.

- 1.) MIRU Pulling Unit and Above Ground Steel Pit. 3/15/11
- 2.) RU Swivel & drill out cement to top of CIBP @ 2900'; circulated well clean.
- 3.) RIH w/ 3 1/4" Bit, RU Swivel & drilled on CIBP, circulated clean; RIH w/ 4 3/4" Concave Mill & milled 1' off of liner top.
- 4.) POOH, RIH w/ 3 1/4" Mill & cleaned out to 3213', circulated clean.
- 5.) RIH w/ composite plug, set plug @ 2925'; RIH w/ 3 1/2" 9.2# Super Max Liner, set @ 2887'.
- 6.) Pumped 200 sx Class C cmt w/ Friction Reducer, circ'd cement to surface.
- 7.) RIH w/ 2 3/4" Bit, drilled float collar, shoe, and cement to 2907';
- 8.) RIH w/ 2 3/4" Mill, drilled out composite plug & cleaned out to TD @ 3226'.
- 9.) Perf'd Yates 3000'-14', 3016'-45', 3060'-77', 3081'-104', 3110'-17', 3120'-37', 3140'-46', 3148'-56', 3174'-84', 3184'-95'.
- 10.) Stimulated Perfs 2976'-3195' w/ 15,000 gals 15% Acid (90/10 Acid/Xylene) dropping 10,000#s salt.
- 11.) RIH w/ injection string and new on/off tool; Ran Preliminary MIT Test, held (Set Pkr @ 2884'; Top Perf- 2976'). 4/4/11
- 12.) RDMO PU, cleaned location, cleaned & disposed of pit fluids. Well shut in, will put on injection w/ NMOCD's Approval 4/5/11.
- 13.) C-108 Approved 6/13/11. WFX-888

Spud Date:

3/15/11

Rig Release Date:

4/5/11

I hereby certify that the information above is true and complete to the best of my knowledge and belief.

SIGNATURE

Melanie Reyes

TITLE

Engineer Assistant

DATE

6/16/11

Type or print name

Melanie Reyes

E-mail address:

melanie.reyes@resacaexploitation.com

PHONE: (432)580-8500

For State Use Only

APPROVED BY:

Melanie Brown

TITLE

Compliance Officer

DATE

6/23/2011

Conditions of Approval (if any):

WELLBORE SCHEMATIC AND HISTORY

CURRENT COMPLETION SCHEMATIC

LEASE NAME

Cooper Jal Unit

WELL NO 230 WIW

STATUS

P&A'd (3-8-01)

Oil

API# 30-025-09649

LOCATION

1650 FNL & 2310 FWL, Sec 25, T - 24S, R - 36E, Lee County, New Mexico

SPUD DATE

TD

3226

KB

3,307'

DF

INT COMP DATE

02/06/51

PBDT

3226

GL

3,302'

ELECTRIC LOGS

GEOLOGICAL DATA

CORES, DSTS or MUD LOGS

GR-N (11-8-79 WELEX)

HYDROCARBON BEARING ZONE DEPTH TOPS

Yates @ 2998'

7-Rivers @ 3215'

Queen @ 3585'

CASING PROFILE

SURF. 10 3/4" - 42#, J-55 set @ 275' Cmt'd w/100 sxs - circ cmt to surf

PROD 5 1/2" - 15#, J-55 set @ 2946' Cmt'd w/400 sxs - TOC @ 1950' from surface by calculation

LINER 4" - 10 46#, J-55, FJ csg set from 3226 - 2900'. Cmt'd w/620 sxs - circ cmt out TOL

CURRENT PERFORATION DATA

CSG PERFS

OPEN HOLE : 2946 - 3226

original OH isolated w/4" liner

5-Nov-79 Perf'd Yates f/ 2976', 2982', 2986', 2991', 3002', 3004', 3027', 3033', 3041', 3043', 3045', 3069', 3071', 3089', 3092'

3097', 3110', 3128', 3132', 3142' 3180', 3184', 3191', 3195' w/ 1 spf (24 holes total)

01-Apr-11 Perf'd Yates: f/3000'-14', 3016'-45', 3060'-77', 3081'-3104', 3110'-31', 3120'-37', 3140'-46', 3148'-56', 3174'-84', & 3184'-3195', 142 feet, 284 holes

TUBING DETAIL

4/4/2011

ROD DETAIL

2864	92	2 3/8" supermax IPC Tbg with turn down collar
10	2	2 3/8" supermax IPC Tbg Subs with turn down collar
3	1	3 1/2" Arrowset PKR
2877		

TOC @ 1950'
By Calc

WELL HISTORY SUMMARY

06-Feb-51 Initial completion interval: (Yates OH) 2946 - 3186'; trt (3030 - 3183') w/ 250 qts nitro IP = 60 bopd, 0 bwopd, and 56 Mcfgpd (pumping).

06-Jul-79 C/O fill from 3031 - 3183'. Deepened to 3226'.

05-Nov-79 C/O f/3102'-3226' Installed 4" liner. Perf'd (Yates) 2976'- 3195' w/ 1 spf (24 holes). Acid'd perms w/4,500 gals 15% HCl and 25 BSs in 3 stages AIR=2 6 bpm @ 1800 psi Frac'd w/51,000 gals gel wtr carrying 36,000#s 20/40 sand & 18,000#s 12/20 sd in 3 stages AIR=20 bpm @ 3200# After WO: 24 bopd, 52 bwopd, & GOR=740

07-Dec-93 Replaced 1 bad jt and 2 bad collars in 2 3/8" tbg string Ran new pmp and rods Returned to production

22-Jun-99 Set CIBP @ 2900'. Dmp 35' cmt on top of CIBP. PBDT @ 2865'. Circ pkr Fluid Tst csg Would not tst Well TA'd.

08-Mar-01 Tag PBDT @ 2875'. Circ well w/ gelled brine mud Spot 25 sxs cmt from 2600'-2400'. WOC. Tag TOC @ 2300'. Perf'd 6 holes @ 1300'. Sqz'd 50 sxs cmt into perms @ 1300 ft @ 1 1/2 bpm & 1300# SIP=1050 psi WOC Tag TOC @ 1050' Tst csg to 1700 psi OK Perf'd 6 holes @ 400'. Pressured to 1700#. No pmp in rate. Perf'd 6 holes @ 325' Pressured to 1700 psi No pmp in rate Spotted 50 sxs cmt from 450' to surf Removed wellhead. Cap casing Installed Cap casing Installed Dry hole marker & cleaned location NMOCD notified - well P&A'd 3-8-2001.

15-Mar-11 Re-Enter Well Drilled cement from surface to 465', test casing - okay Drilled cement plug from 1050' to 1360' Test casing to 500' lost 100# in 30 minutes Drilled cement plug from 2,300' to 2,610' and 2,890' to CIBP Drilled CIBP with 3 1/4" bit Left 3 cones in h RIH with 4 3/4" concave mill, milled 1 foot off of iner RIH with 3 1/4" mill to 3,213', left 3 cones in hole RIH with composite plug an at 2,925' RIH with 3 1/2" 9.20# supermax lnr at 2,887' Pumped 20 bbls lime water followed 200 sxs Class C cement, circ'd to su RIH with 2 3/4", drilled float collar, shoe and cement to 2,907' Drilled out composite plug, to 3,226'. Perf'd Yates from 3,000'-3,01'-3016'-3045', 3060'-3077', 3081'-3104', 3110'-3117', 3120'-3137', 3140'-3146', 3148'-3156', 3174'-3184', & 3184'-3195', 142 feet, 284 holes Acidized with 15,000 gallons 15% HCl 90%/10% acid/Xylene at 6 bpm Divert with 10,000# rock salt Pavg= 2450# ISIP= 760# RI injection string MIT well Pulled pressure chart for OCD

Surface Csg

Hole Size 13 in
Csg Size 10 3/4 in
Set @ 275 ft
Sxs Cmt 100
Circ Yes
TOC @ surf
TOC by circ

Perf'd 6 holes
@ 325'
Perf'd 6 holes
@ 400'

Production Liner

Hole Size 4 3/4 in
Csg Size 5 1/2 in
Top Surface ft
Btm 3226 ft
Sxs Cmt 620
Circ Yes

Production Liner

Hole Size 4 3/4 in
Csg Size 4 in
Top 2900 ft
Btm 3226 ft
Sxs Cmt 620
Circ Yes

Production Csg

Hole Size 9 7/8 in
Csg Size 5 1/2 in
Set @ 2946 ft
Sxs Cmt 400
Circ No
TOC @ 1950 f/ surf
TOC by calc

PKR @ 2884'
BTM Lnr @ 2887'

Yates @ 2998'
2976', 82', 86', 91'

3002', 04', 27',

3033', 41', 43',

3045', 69', 71',

3089', 92', 97',

3110', 28', 32',

3142', 81', 84',

3191', 3195'

7-R @ 3215'

Original

OH Interval

2946 - 3226

PBDT 3226 ft

TD 3226 ft

OH ID 4.75 in

Queen @ 3585'

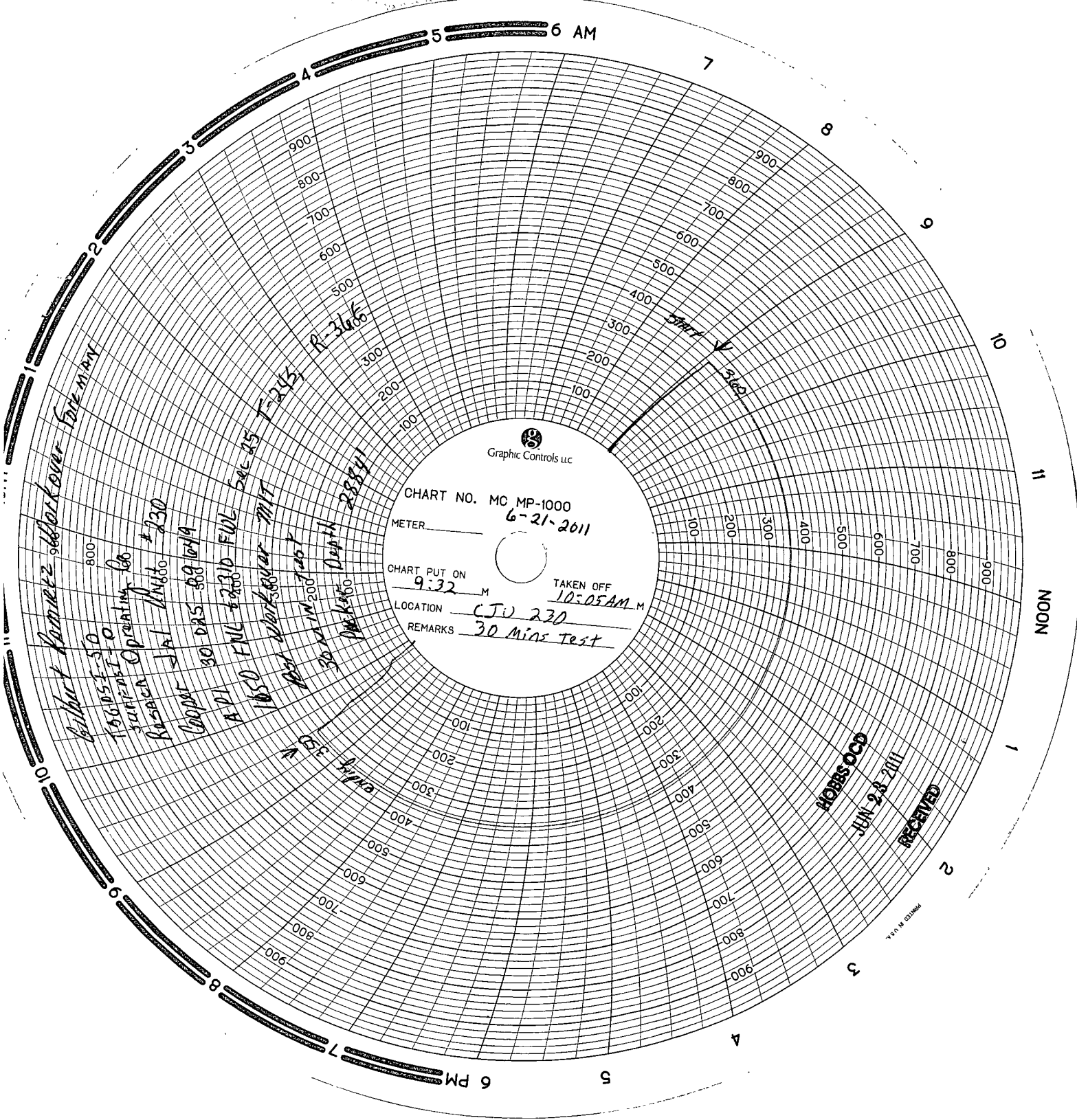
PREPARED BY

Larry S Adams

Domingo Carrizales

UPDATED

13-Jun-11



Graphic Controls LLC

CHART NO. MC MP-1000
6-21-2011

METER _____

CHART PUT ON
9:32 M

TAKEN OFF
10:05 AM M

LOCATION CTU 230
REMARKS 30 Mins Test

Calicut Kometz Workover Fireman

156051-30

156051-0

156051-0

156051-0

156051-0

156051-0

156051-0

156051-0

156051-0

156051-0

156051-0

156051-0

156051-0

156051-0

156051-0

156051-0

156051-0

156051-0

156051-0

156051-0

156051-0

156051-0

HOBBS OGD

JUN 28 2011

RECEIVED