

DISTRICT I
1625 N. FRENCH DR., HOBBS, NM 88240

DISTRICT II
1301 W. GRAND AVENUE, ARTESIA, NM 88210

DISTRICT III
1000 RIO BRAZOS RD., AZTEC, NM 87410

DISTRICT IV
11885 S. ST. FRANCIS DR., SANTA FE, NM 87505

State of New Mexico
Energy, Minerals and Natural Resources Department

HOBBS OCD

Form C-102

Revised October 12, 2005

Submit to Appropriate District Office

State Lease - 4 Copies

Fee Lease - 3 Copies

OIL CONSERVATION DIVISION

11885 SOUTH ST. FRANCIS DR.
Santa Fe, New Mexico 87505

RECEIVED

WELL LOCATION AND ACREAGE DEDICATION PLAT

☐ AMENDED REPORT

API Number 30-025-40080	Pool Code 72480	Pool Name BLUEBRY OIL + GAS (PRO GAS)
Property Code 306605	Property Name LOU WORTHAN	Well Number 30
OGRID No. 873	Operator Name APACHE CORPORATION	Elevation 3367'

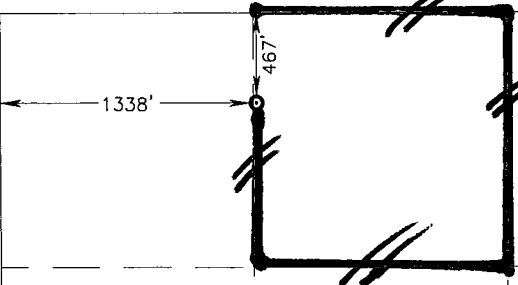
Surface Location

UL or lot No. C	Section 11	Township 22-S	Range 37-E	Lot Idn	Feet from the 467	North/South line NORTH	Feet from the 1338	East/West line WEST	County LEA
---------------------------	----------------------	-------------------------	----------------------	---------	-----------------------------	----------------------------------	------------------------------	-------------------------------	----------------------

Bottom Hole Location If Different From Surface

UL or lot No.	Section	Township	Range	Lot Idn	Feet from the	North/South line	Feet from the	East/West line	County
Dedicated Acres 40	Joint or Infill	Consolidation Code	Order No. SD-2011-001; NSL-6341						

NO ALLOWABLE WILL BE ASSIGNED TO THIS COMPLETION UNTIL ALL INTERESTS HAVE BEEN CONSOLIDATED
OR A NON-STANDARD UNIT HAS BEEN APPROVED BY THE DIVISION

	OPERATOR CERTIFICATION <p>I hereby certify that the information herein is true and complete to the best of my knowledge and belief, and that this organization either owns a working interest or unleased mineral interest in the land including the proposed bottom hole location or has a right to drill this well at this location pursuant to a contract with an owner of such mineral or working interest, or to a voluntary pooling agreement or a compulsory pooling order heretofore entered by the division.</p> <p><i>Reesa Holland</i> 6/22/11 Signature Date REESEA HOLLAND Printed Name</p>
GEODETIC COORDINATES NAD 27 NME SURFACE LOCATION Y=515755.7 N X=869006.2 E LAT.=32.412252° N LONG.=103.137627° W LAT.=32°24'44" N LONG.=103°07'15" W	SURVEYOR CERTIFICATION <p>I hereby certify that the well location shown on this plat was plotted from field notes of actual surveys made by me or under my supervision, and that the same is true and correct to the best of my belief.</p> <p>DECEMBER 21, 2010</p> <p>Date Surveyed Signature & Seal of Professional Surveyor <i>Ronald J. Eidson</i> 12/21/2010 10.11.1839 Certificate No. GARY C. EIDSON 12641 RONALD J. EIDSON 3239</p>

DISTRICT I
1625 N FRENCH DR., HOBBS, NM 88240

DISTRICT II
1301 W. GRAND AVENUE, ARTESIA, NM 88210

DISTRICT III
1000 RIO BRAZOS RD., AZTEC, NM 87410

DISTRICT IV
11885 S. ST. FRANCIS DR., SANTA FE, NM 87505

State of New Mexico
Energy, Minerals and Natural Resources Department

OIL CONSERVATION DIVISION
11885 SOUTH ST. FRANCIS DR.
Santa Fe, New Mexico 87505

HOBBS OGD

JUN 24 2011

RECEIVED

Form C-102

Revised October 12, 2005

Submit to Appropriate District Office

State Lease - 4 Copies

Fee Lease - 3 Copies

WELL LOCATION AND ACREAGE DEDICATION PLAT

☐ AMENDED REPORT

API Number 30-025-40080	Pool Code 60240	Pool Name TUBB OIL + GAS (OIL)
Property Code 306605	Property Name LOU WORTHAN	Well Number 30
OGRID No. 873	Operator Name APACHE CORPORATION	Elevation 3367'

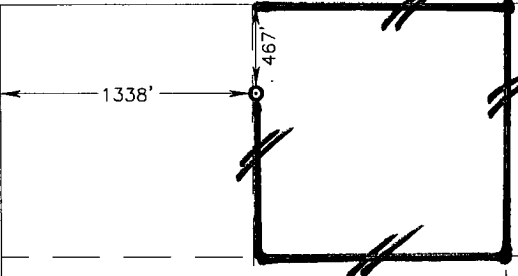
Surface Location

UL or lot No. C	Section 11	Township 22-S	Range 37-E	Lot Idn	Feet from the 467	North/South line NORTH	Feet from the 1338	East/West line WEST	County LEA
--------------------	---------------	------------------	---------------	---------	----------------------	---------------------------	-----------------------	------------------------	---------------

Bottom Hole Location If Different From Surface

UL or lot No.	Section	Township	Range	Lot Idn	Feet from the	North/South line	Feet from the	East/West line	County
Dedicated Acres 40		Joint or Infill	Consolidation Code		Order No. SD-2011-001; NSL-6341				

NO ALLOWABLE WILL BE ASSIGNED TO THIS COMPLETION UNTIL ALL INTERESTS HAVE BEEN CONSOLIDATED
OR A NON-STANDARD UNIT HAS BEEN APPROVED BY THE DIVISION


GEODETIC COORDINATES NAD 27 NME SURFACE LOCATION Y=515755.7 N X=869006.2 E LAT.=32.412252' N LONG.=103 137627' W LAT.=32°24'44" N LONG.=103°07'15" W

OPERATOR CERTIFICATION

I hereby certify that the information herein is true and complete to the best of my knowledge and belief, and that this organization either owns a working interest or unleased mineral interest in the land including the proposed bottom hole location or has a right to drill this well at this location pursuant to a contract with an owner of such mineral or working interest, or to a voluntary pooling agreement or a compulsory pooling order heretofore entered by the division.

Reesa Holland 6/22/11
Signature Date
REESA HOLLAND
Printed Name

SURVEYOR CERTIFICATION

I hereby certify that the well location shown on this plat was plotted from field notes of actual surveys made by me or under my supervision, and that the same is true and correct to the best of my belief.

DECEMBER 21, 2010

Date Surveyed DSS

Signature & Seal of
Professional Surveyor
RONALD G. EIDSON
Certificate No. GARY G. EIDSON 12641
RONALD G. EIDSON 3239

DISTRICT I
1625 N. FRENCH DR., HOBBS, NM 88240

DISTRICT II
1301 W. GRAND AVENUE, ARTESIA, NM 88210

DISTRICT III
1000 RIO BRAZOS RD., AZTEC, NM 87410

DISTRICT IV
11885 S. ST. FRANCIS DR., SANTA FE, NM 87505

State of New Mexico
Energy, Minerals and Natural Resources Department

OIL CONSERVATION DIVISION
11885 SOUTH ST. FRANCIS DR.
Santa Fe, New Mexico 87505

HOBBS OCD

Form C-102

Revised October 12, 2005

Submit to Appropriate District Office

State Lease - 4 Copies

Fee Lease - 3 Copies

JUN 24 2011

WELL LOCATION AND ACREAGE DEDICATION PLAT

RECEIVED

☐ AMENDED REPORT

API Number 30-025-40080	Pool Code 19190	Pool Name DRINKARD
Property Code 306605	Property Name LOU WORTHAN	Well Number 30
OGRID No. 873	Operator Name APACHE CORPORATION	Elevation 3367'

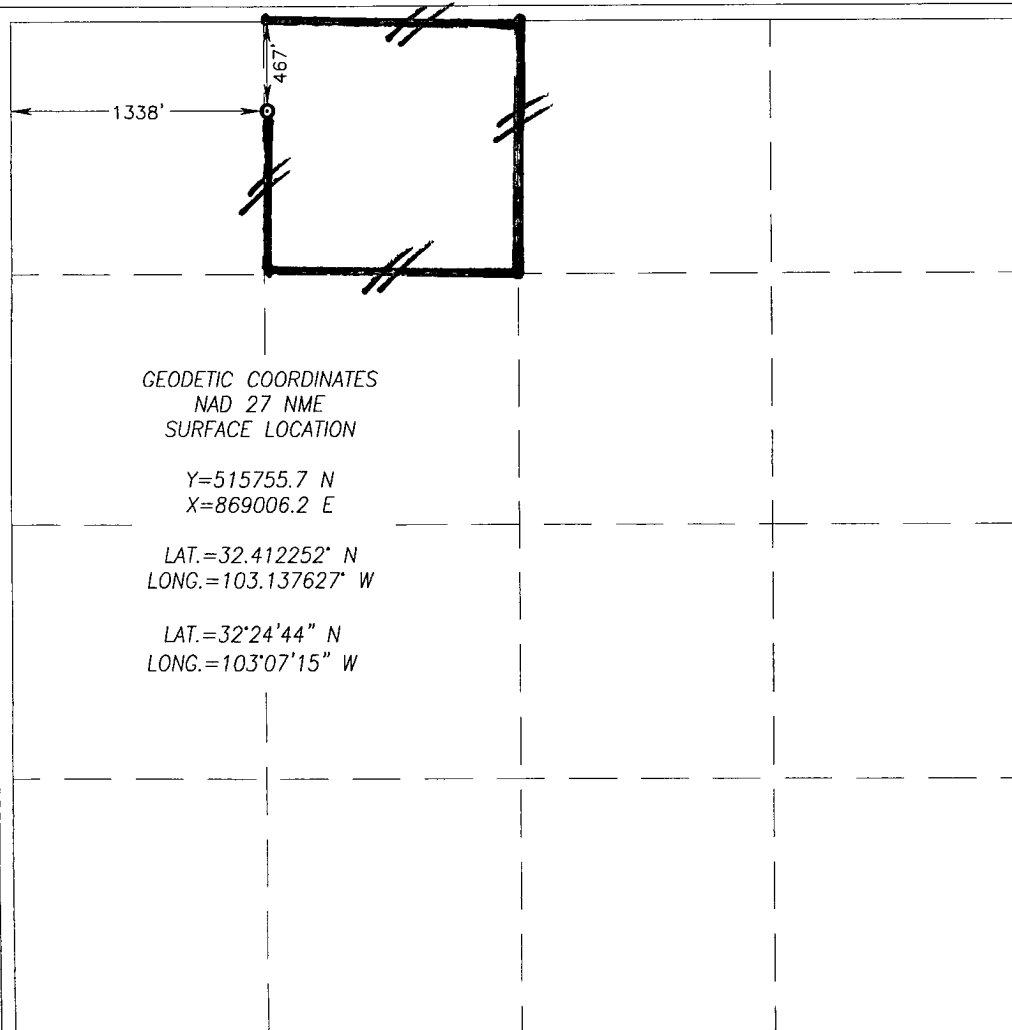
Surface Location

UL or lot No. C	Section 11	Township 22-S	Range 37-E	Lot Idn	Feet from the 467	North/South line NORTH	Feet from the 1338	East/West line WEST	County LEA
---------------------------	----------------------	-------------------------	----------------------	---------	-----------------------------	----------------------------------	------------------------------	-------------------------------	----------------------

Bottom Hole Location If Different From Surface

UL or lot No.	Section	Township	Range	Lot Idn	Feet from the	North/South line	Feet from the	East/West line	County
Dedicated Acres 40	Joint or Infill	Consolidation Code	Order No. SD-2011-001; NSL-6341						

NO ALLOWABLE WILL BE ASSIGNED TO THIS COMPLETION UNTIL ALL INTERESTS HAVE BEEN CONSOLIDATED
OR A NON-STANDARD UNIT HAS BEEN APPROVED BY THE DIVISION



OPERATOR CERTIFICATION

I hereby certify that the information herein is true and complete to the best of my knowledge and belief, and that this organization either owns a working interest or unleased mineral interest in the land including the proposed bottom hole location or has a right to drill this well at this location pursuant to a contract with an owner of such mineral or working interest, or to a voluntary pooling agreement or a compulsory pooling order heretofore entered by the division.

Reesa Holland 6/22/11
Signature Date
REESA HOLLAND
Printed Name

SURVEYOR CERTIFICATION

I hereby certify that the well location shown on this plat was plotted from field notes of actual surveys made by me or under my supervision, and that the same is true and correct to the best of my belief.

DECEMBER 21, 2010

Date Surveyed	DSS
Signature & Seal of Professional Surveyor	
Certificate No. GARY G. EIDSON 12641	RONALD J. EIDSON 3239

DISTRICT I
1625 N FRENCH DR., HOBBS, NM 88240

State of New Mexico
Energy, Minerals and Natural Resources Department

HOBBS OCD

Form C-102

DISTRICT II
1301 W. GRAND AVENUE, ARTESIA, NM 88210

OIL CONSERVATION DIVISION

JUN 24 2011

Revised October 12, 2005
Submit to Appropriate District Office
State Lease - 4 Copies
Fee Lease - 3 Copies

DISTRICT III
1000 RIO BRAZOS RD., AZTEC, NM 87410

11885 SOUTH ST. FRANCIS DR.
Santa Fe, New Mexico 87505

RECEIVED

DISTRICT IV
11885 S. ST. FRANCIS DR., SANTA FE, NM 87505

WELL LOCATION AND ACREAGE DEDICATION PLAT

☐ AMENDED REPORT

API Number 30-025-40080	Pool Code 62700	Pool Name WANTZ; ABO
Property Code 306605	Property Name LOU WORTHAN	Well Number 30
OGRID No. 873	Operator Name APACHE CORPORATION	Elevation 3367'

Surface Location

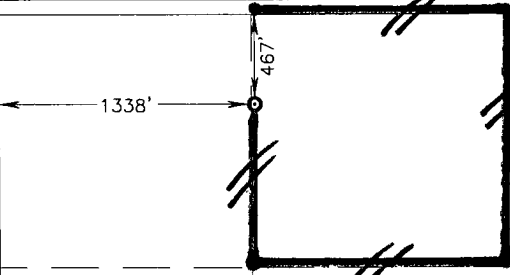
UL or lot No. C	Section 11	Township 22-S	Range 37-E	Lot Idn	Feet from the 467	North/South line NORTH	Feet from the 1338	East/West line WEST	County LEA
--------------------	---------------	------------------	---------------	---------	----------------------	---------------------------	-----------------------	------------------------	---------------

Bottom Hole Location If Different From Surface

UL or lot No.	Section	Township	Range	Lot Idn	Feet from the	North/South line	Feet from the	East/West line	County
---------------	---------	----------	-------	---------	---------------	------------------	---------------	----------------	--------

Dedicated Acres 40	Joint or Infill	Consolidation Code	Order No. SD-2011-001; NSL-6341
-----------------------	-----------------	--------------------	------------------------------------

NO ALLOWABLE WILL BE ASSIGNED TO THIS COMPLETION UNTIL ALL INTERESTS HAVE BEEN CONSOLIDATED
OR A NON-STANDARD UNIT HAS BEEN APPROVED BY THE DIVISION

	
GEODETIC COORDINATES NAD 27 NME SURFACE LOCATION Y=515755.7 N X=869006.2 E LAT.=32.412252' N LONG.=103 137627' W LAT.=32°24'44" N LONG.=103°07'15" W	

OPERATOR CERTIFICATION

I hereby certify that the information herein is true and complete to the best of my knowledge and belief, and that this organization either owns a working interest or unleased mineral interest in the land including the proposed bottom hole location or has a right to drill this well at this location pursuant to a contract with an owner of such mineral or working interest, or to a voluntary pooling agreement or a compulsory pooling order heretofore entered by the division.

Reesa Holland 6/22/11
Signature Date
REESEA HOLLAND
Printed Name

SURVEYOR CERTIFICATION

I hereby certify that the well location shown on this plat was plotted from field notes of actual surveys made by me or under my supervision, and that the same is true and correct to the best of my belief.

DECEMBER 21, 2010

Date Surveyed	DSS
Signature & Seal of Professional Surveyor	
Certificate No. GARY G. EIDSON 12641 RONALD P. EIDSON 3239	