

JUN-29-2011

HOBBS OCD

Form C-102

DISTRICT I

1625 N. French Dr., Hobbs, NM 88240

JUN 24 2011

State of New Mexico
Energy, Minerals and Natural Resources Department

Revised July 16, 2010

DISTRICT II

1301 W. Grand Avenue, Artesia, NM 88210

Submit one copy to appropriate
District Office

DISTRICT III

1000 Rio Brazos Rd., Aztec, NM 87410

OIL CONSERVATION DIVISION
RECEIVED1220 South St. Francis Dr.
Santa Fe, New Mexico 87505

DISTRICT IV

1220 S. St. Francis Dr., Santa Fe, NM 87505

WELL LOCATION AND ACREAGE DEDICATION PLAT

☐ AMENDED REPORT

API Number 30-025-4015	Pool Code 49210	Pool Name Paddock
Property Code 22880	Property Name TURNER	Well Number 31
OGRID No. 873	Operator Name APACHE CORPORATION	Elevation 3402'

Surface Location

UL or lot No.	Section	Township	Range	Lot Idn	Feet from the	North/South line	Feet from the	East/West line	County
1	22	21 S	37 E		1580	SOUTH	540	EAST	LEA

Bottom Hole Location If Different From Surface

UL or lot No.	Section	Township	Range	Lot Idn	Feet from the	North/South line	Feet from the	East/West line	County

Dedicated Acres 40	Joint or Infill	Consolidation Code	Order No.
------------------------------	-----------------	--------------------	-----------

NO ALLOWABLE WILL BE ASSIGNED TO THIS COMPLETION UNTIL ALL INTERESTS HAVE BEEN CONSOLIDATED
OR A NON-STANDARD UNIT HAS BEEN APPROVED BY THE DIVISION

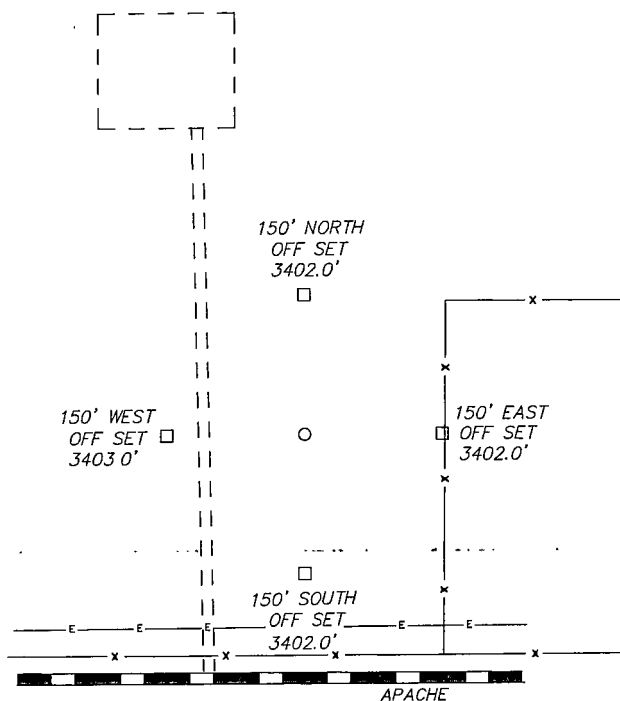
	<p>OPERATOR CERTIFICATION</p> <p>I hereby certify that the information contained herein is true and complete to the best of my knowledge and belief, and that this organization either owns a working interest or unleased mineral interest in the land including the proposed bottom hole location or has a right to drill this well at this location pursuant to a contract with an owner of such a mineral or working interest, or to a voluntary pooling agreement or a compulsory pooling order heretofore entered by the division.</p> <p><i>Sorina L. Flores</i> 4/21/11 Signature Date</p> <p>Sorina L. Flores Printed Name</p> <p>Sorina-Flores@apachecorp.com Email Address</p>
	<p>SURFACE LOCATION</p> <p>Lat - N 32°27'41.40" Long - W 103°08'38.68" NMSPCE- N 533663.193 E 908145.263 (NAD-83)</p> <p>Lat - N 32°27'40.92" Long - W 103°08'36.99" NMSPCE- N 533603.660 E 866960.898 (NAD-27)</p>
	<p>SURVEYOR CERTIFICATION</p> <p>I hereby certify that the well location shown on this plat was plotted from field notes of actual surveys made by me or under my supervision, and that the same is true and correct to the best of my belief.</p> <p>GARY L. JONES Date Surveyed Signature & Seal of Professional Surveyor W.S. Professional Land Surveyor</p>
	<p>Certificate No. Gary L. Jones 7977</p> <p>BASIN SURVEYS 24774</p>

SECTION 22, TOWNSHIP 21 SOUTH, RANGE 37 EAST, N.M.P.M.,
LEA COUNTY, NEW MEXICO.

HOBBS OCD

JUN 24 2011

RECEIVED



APACHE CORPORATION
TURNER #31
ELEV. - 3402'

Lat - N 32°27'41.40"
Long - W 103°08'38.68"
NMSPCE- N 533663.193
E 908145.263
(NAD-83)

Lat - N 32°27'40.92"
Long - W 103°08'36.99"
NMSPCE- N 533603.660
E 866960.898
(NAD-27)



200 0 200 400 FEET
SCALE: 1" = 200'

Directions to Location:

FROM THE JUNCTION OF HWY 207 AND APACHE, GO
EAST ON APACHE FOR 0.8 MILES TO LEASE ROAD,
ON LEASE ROAD GO NORTH 0.1 MILES TO PROPOSED
LOCATION.

BASIN SURVEYS P.O. BOX 1786-HOBBS, NEW MEXICO

W.O. Number: 24774 Drawn By: J. SMALL

Date: 06-16-2011 Disk: JMS 24774

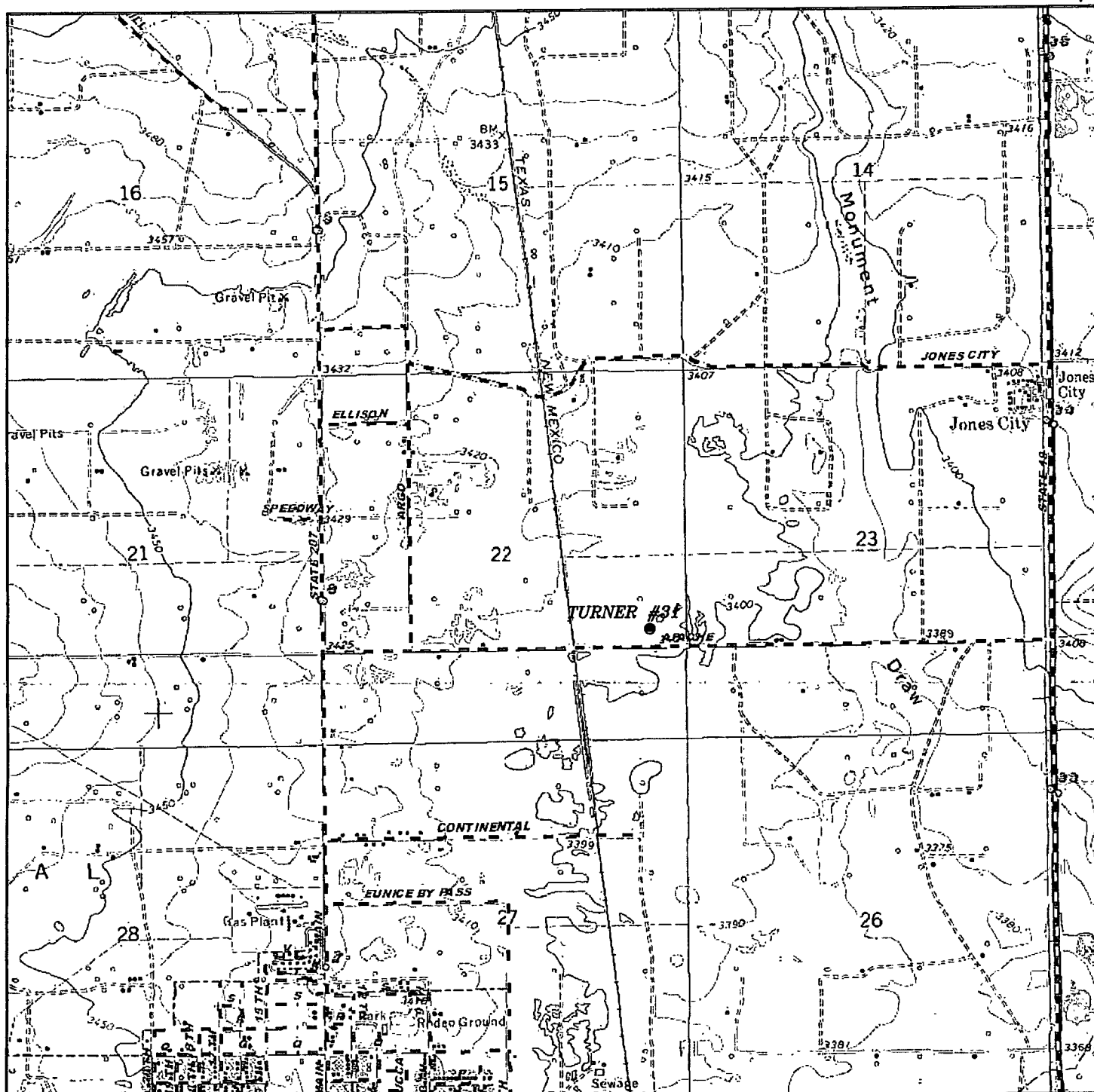
APACHE CORPORATION

REF: TURNER #31 / WELL PAD TOPO

THE TURNER #31 LOCATED 1580'

FROM THE SOUTH LINE AND 540' FROM THE EAST LINE OF
SECTION 22, TOWNSHIP 21 SOUTH, RANGE 37 EAST,
N.M.P.M., LEA COUNTY, NEW MEXICO.

Survey Date: 06-13-2011 Sheet 1 of 1 Sheets



TURNER #31
 Located 1580' FSL and 540' FEL
 Section 22, Township 21 South, Range 37 East,
 N.M.P.M., Lea County, New Mexico.

basin
surveys
 focused on excellence
 in the oilfield

P.O. Box 1786
 1120 N. West County Rd.
 Hobbs, New Mexico 88241
 (575) 393-7316 - Office
 (575) 392-2206 - Fax
 basinsurveys.com

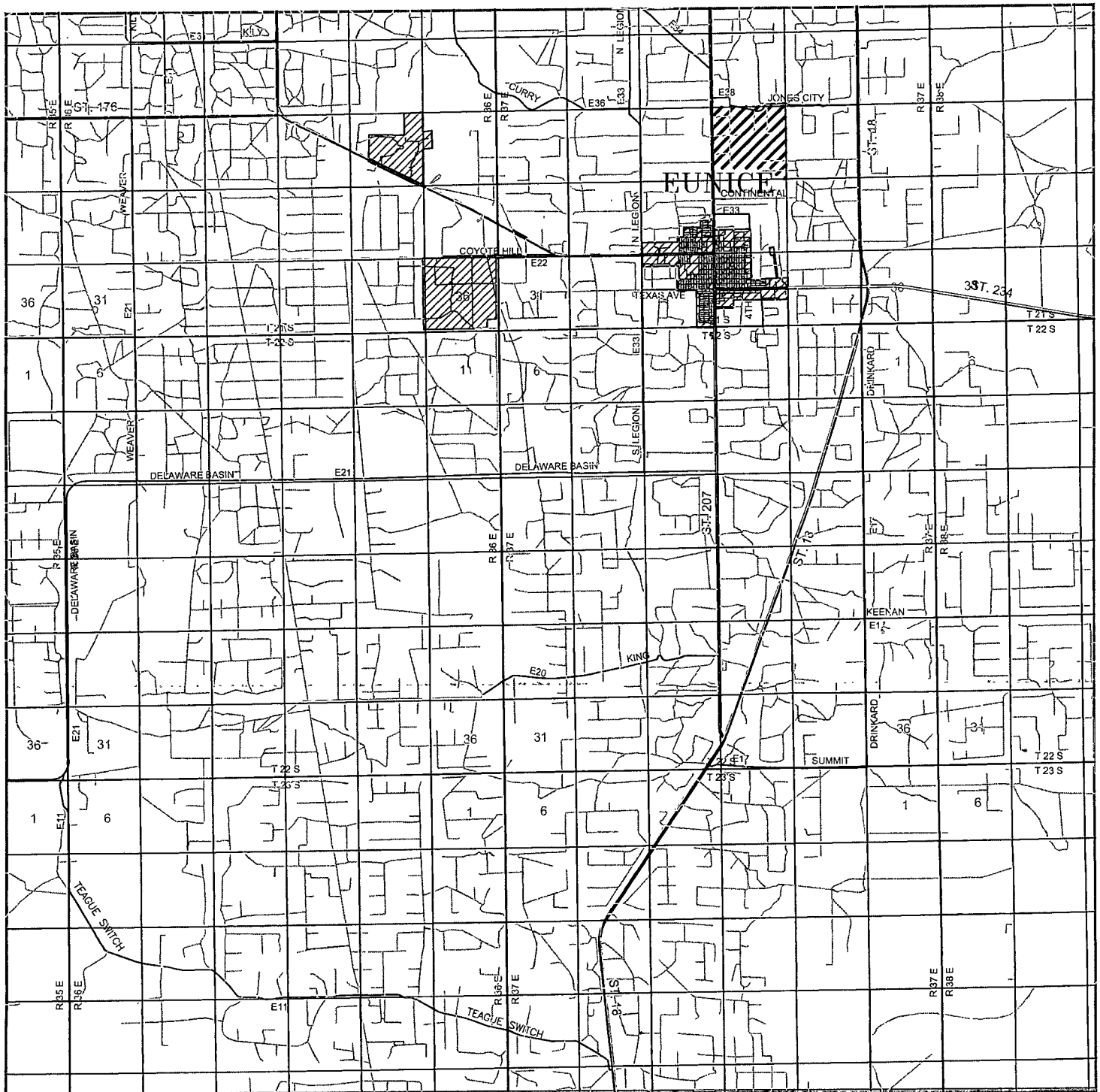
W.O. Number: JMS 24774

Survey Date: 06-13-2011

Scale: 1" = 2000'

Date: 06-16-2011

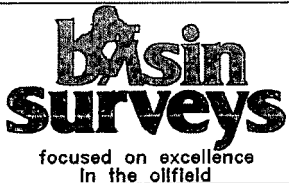
APACHE
CORPORATION



TURNER #31

Located 1580' FSL and 540' FEL

Section 22, Township 21 South, Range 37 East,
N.M.P.M., Lea County, New Mexico.



P.O. Box 1786
1120 N. West County Rd.
Hobbs, New Mexico 88241
(575) 393-7316 - Office
(575) 392-2206 - Fax
basinsurveys.com

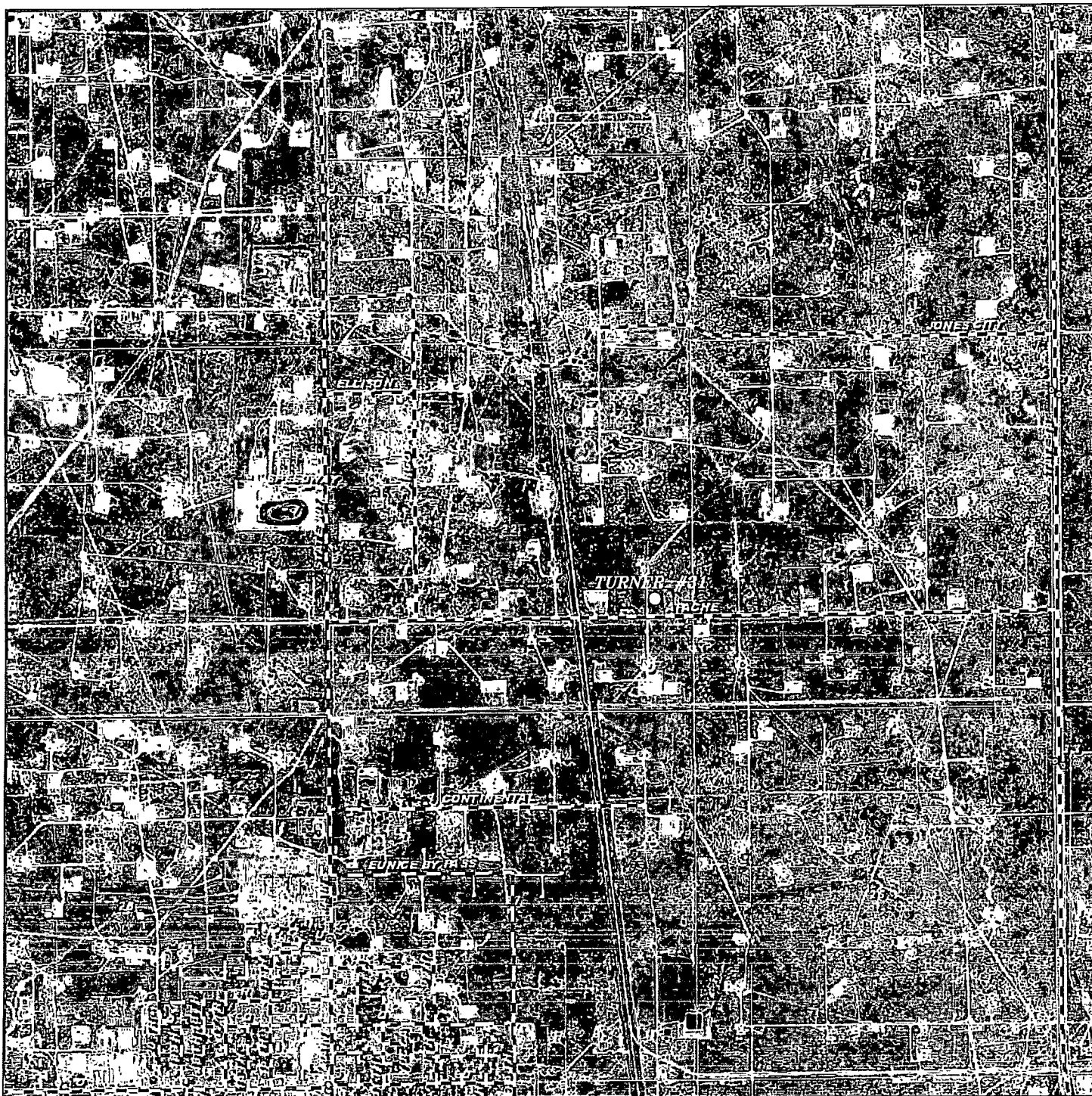
W.O. Number: JMS 24774

Survey Date: 06-13-2011

Scale: 1" = 2 Miles

Date: 06-16-2011

APACHE
CORPORATION



TURNER #31

Located 1580' FSL and 540' FEL

Section 22, Township 21 South, Range 37 East,
N.M.P.M., Lea County, New Mexico.

basin
surveys
focused on excellence
in the oilfield

P.O. Box 1786
1120 N. West County Rd.
Hobbs, New Mexico 88241
(575) 393-7316 - Office
(575) 392-2206 - Fax
basinsurveys.com

W.O. Number: JMS 24774

Scale: 1" = 2000'

YELLOW TINT - USA LAND
BLUE TINT - STATE LAND
NATURAL COLOR - FEE LAND



APACHE
CORPORATION